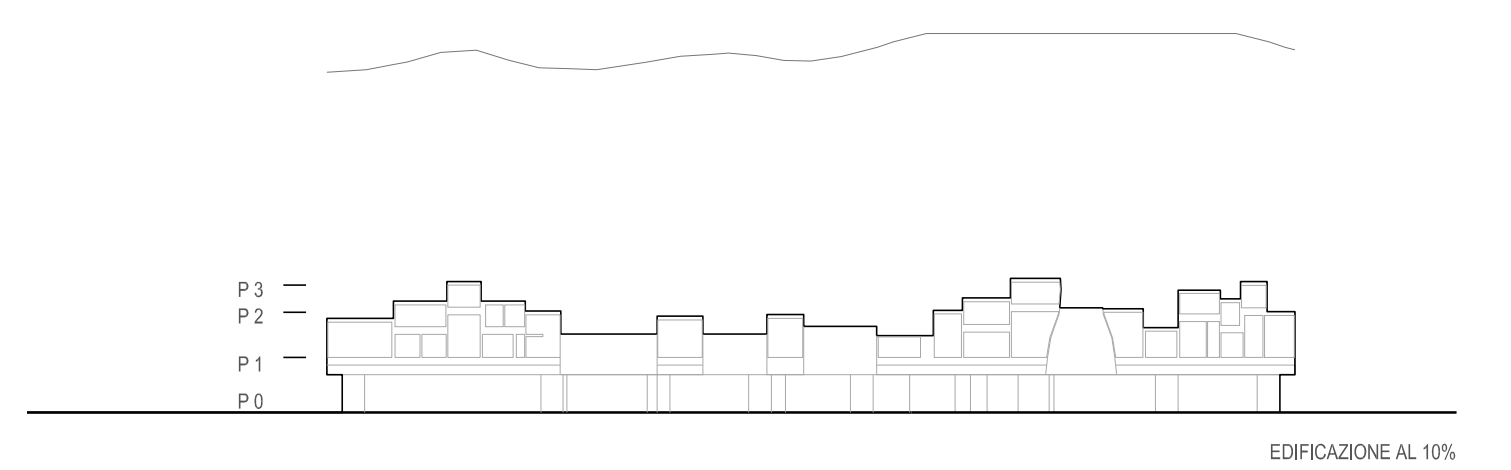
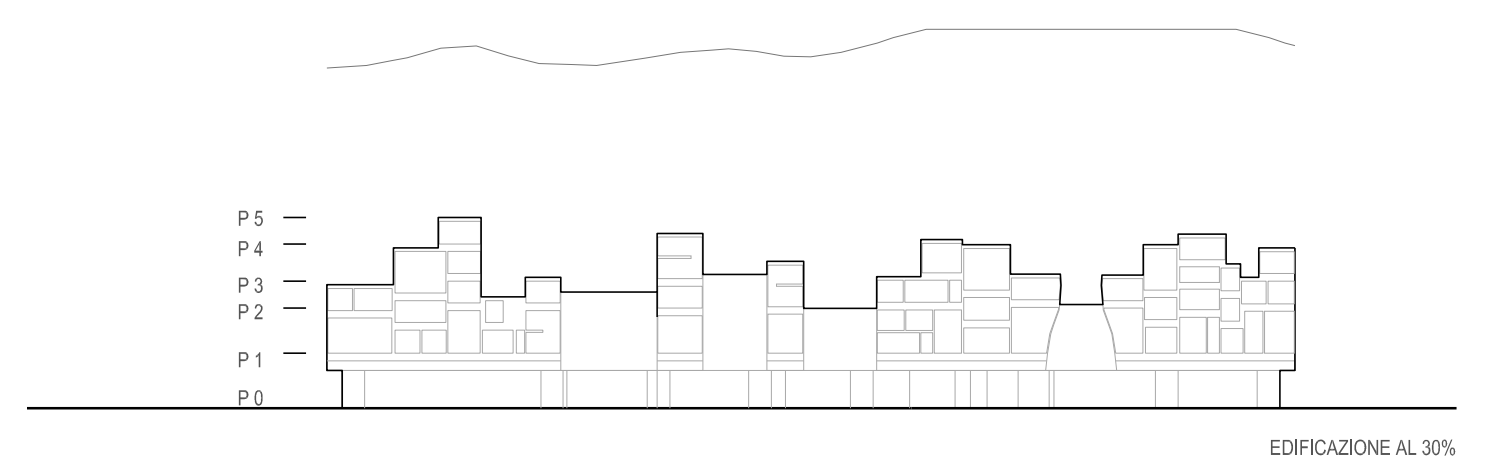
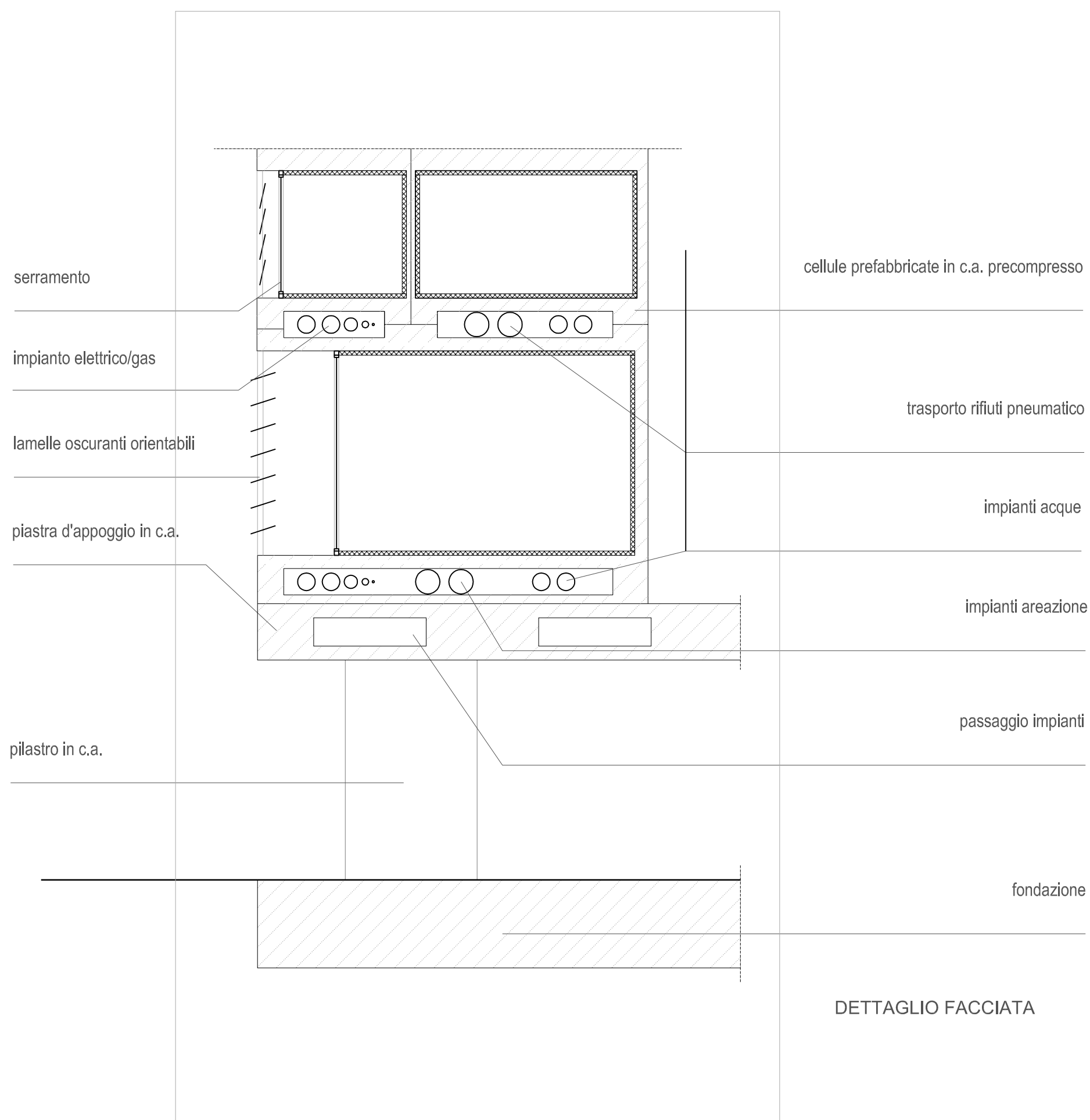
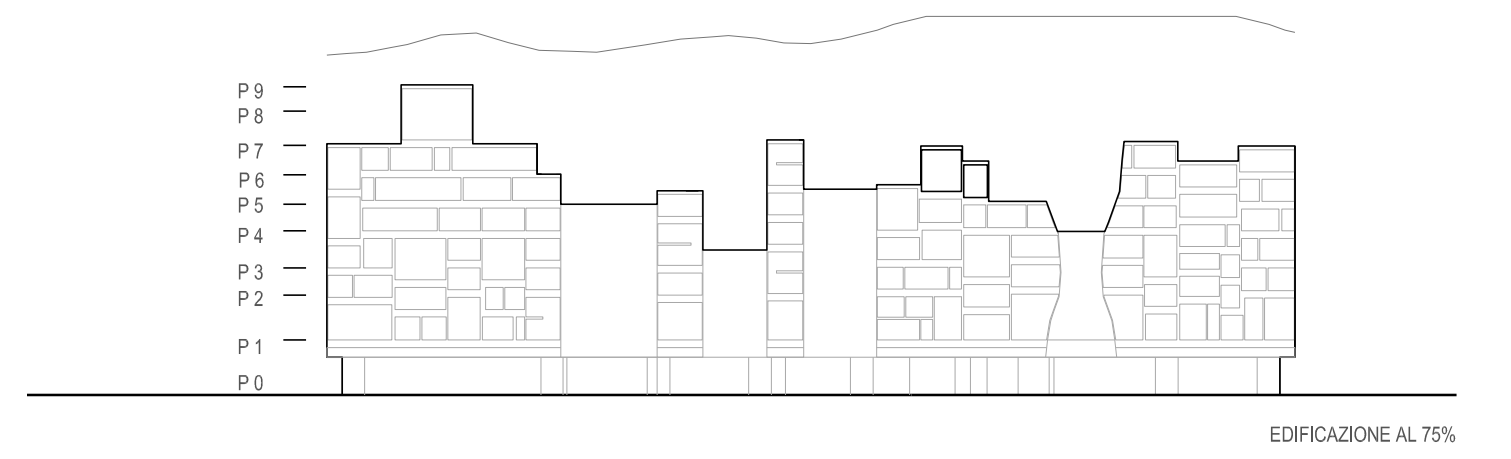
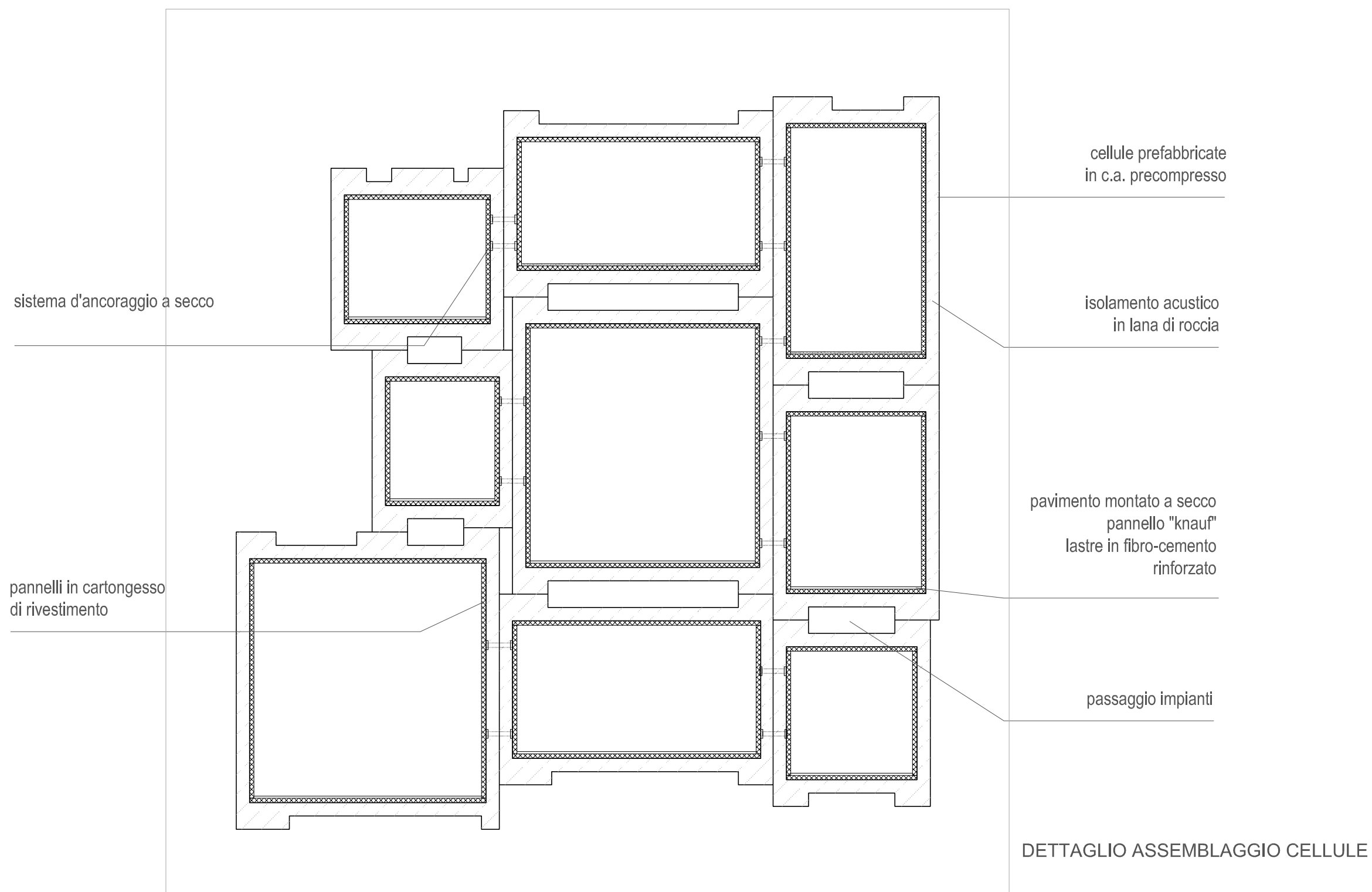



ASSEMBLAGGIO CELLULE ABITATIVE




 Politecnico di Milano
 Facoltà di Architettura
 A.A. 2009/2010
 Titolo
 "Alta densità"
 tavola n° 20
 composizione cellule
 Relatore
 Prof. Gennaro Postiglione
 scala 1:300
 scala 1:100

0 3mt 6mt 12mt 18mt
 0 1mt 2mt 4mt 6mt