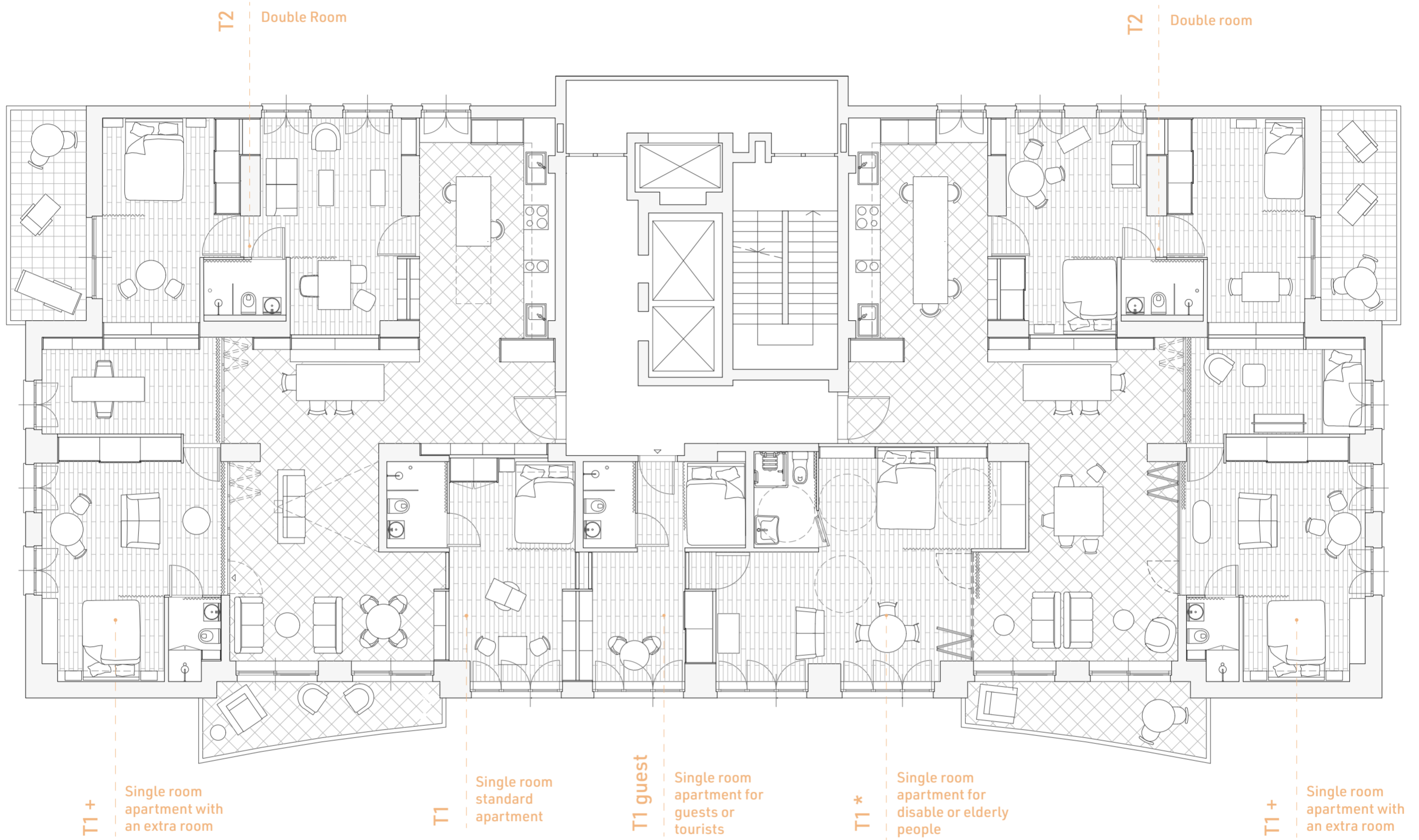
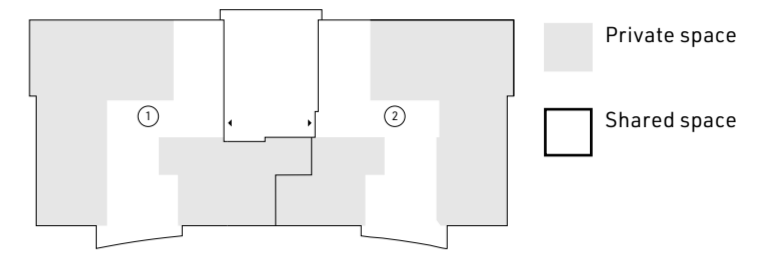


CO-LIVING: A strategy for the future city housing

Project



Plan 1: 100



CLUSTER 1

Tot: 187.1 m²
Private: 120.2 m²
Shared: 66.9 m²
N° of units: 4
Person per cluster: 6/7
Mq per person: 23.4

UNIT T2
DOUBLE ROOM
APARTMENT

42.4 m²



UNIT T1
SINGLE ROOM
APARTMENT

20.2 m²



UNIT T1 PLUS
SINGLE ROOM APARTMENT
WITH EXTRA ROOM

38.8 m²



UNIT T1 GUEST
SINGLE ROOM
APARTMENT

18.8 m²



CLUSTER 2

Tot: 183.4 m²
Private: 117.7 m²
Shared: 65.7 m²
N° of units: 3
Person per cluster: 7/8
Mq per person: 22.9

UNIT T2
DOUBLE ROOM

42.4 m²



UNIT T1 PLUS
SINGLE ROOM APARTMENT
WITH EXTRA ROOM

38.8 m²



UNIT T1*
SINGLE ROOM APARTMENT FOR
DISABLE

36.5 m²

