



School of Architecture urban planing construction
engineering

Implementing metropolitan paradigms in the future metropolitan
centrality to increase social interactions and prevent environmental
risks of Ahvaz, Iran

Supervisor: Antonella Maria Eugenia Contin

Co-Supervisor: Narges Golkar

Author: Shadi Aein

Student number: 10552917

Academic year: 2018-2019

Her essence is enlightenment,
She is the luminance of my way,
As Shams Tabrizi was for Molawi, Iranian poet
philosopher.

_ Present to Antonella Maria Eugenia Contin

Table of Contents

Chapter A -Introduction of Ahvaz

A-1-Location

Geopolitic and international relations

A-2- Geography

Geography of Khouzestan province

Mesopotamia water system

Karun river

A-3- History

Historical maps

Reading history

Ancient era

Exploration of oil

indutrialization

war

post war

Chapter B - Environmental issues

Sand Storms

Floods

Air pollution

Table of Contents

Chapter C- Strategy and proposal

c-1-Methodology

Geopolitic and international relations

c-2- Strategy

Regional scale

Metropolitan scale

Urban scale

C-3

Masterplan Metropolitan scale

Masterplan Urban scale

Chapter D- Architectural project

Megablock of station buildings

Station building

Chapter A- introduction of Ahvaz

Table of Contents

Chapter C- Strategy and proposal

c-1-Methodology

Geopolitic and international relations

c-2- Strategy

Regional scale

Metropolitan scale

Urban scale

C-3

Masterplan Metropolitan scale

Masterplan Urban scale

Chapter D- Architectural project

Megablock of station buildings

Station building

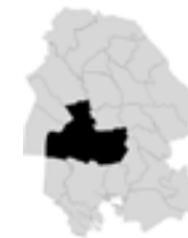


Table of Contents

Chapter C- Strategy and proposal

c-1-Methodology

Geopolitic and international relations

c-2- Strategy

Regional scale

Metropolitan scale

Urban scale

C-3

Masterplan Metropolitan scale

Masterplan Urban scale

Chapter D- Architectural project

Megablock of station buildings

Station building



Table of Contents

Chapter C- Strategy and proposal

c-1-Methodology

Geopolitic and international relations

c-2- Strategy

Regional scale

Metropolitan scale

Urban scale

C-3

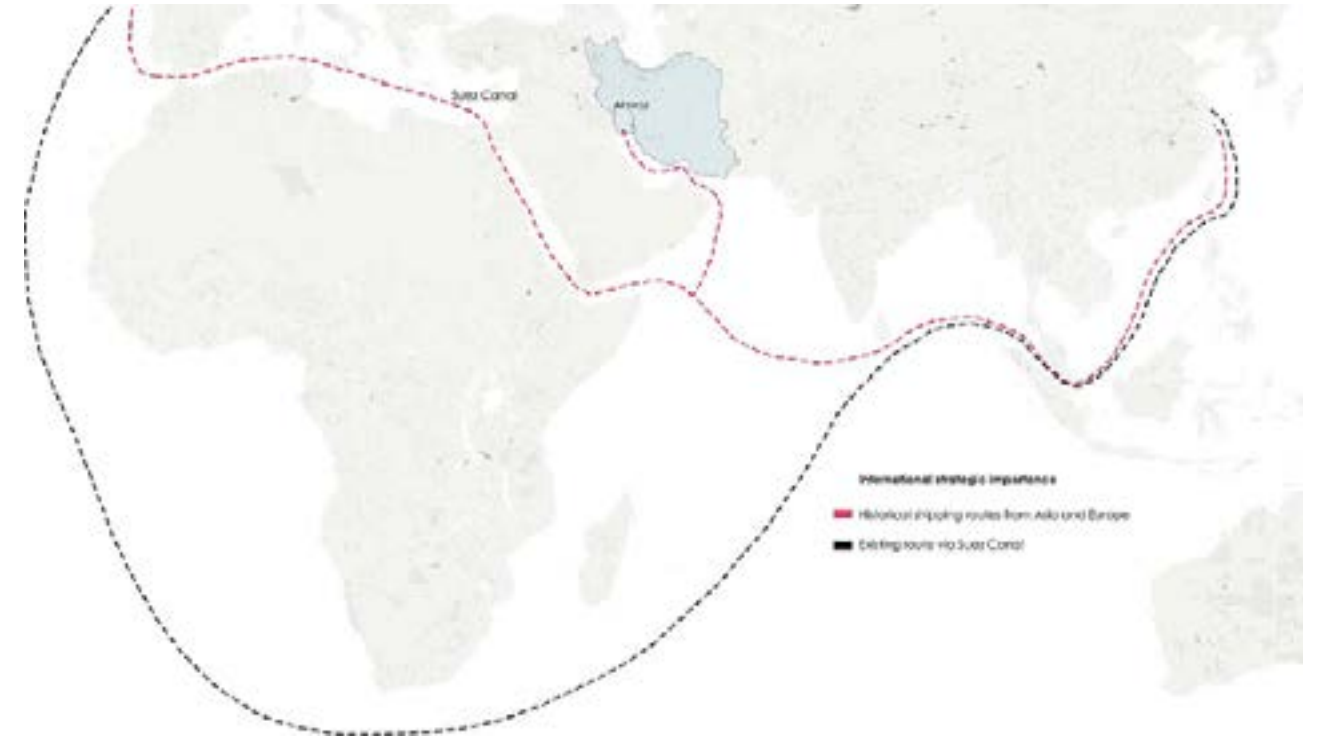
Masterplan Metropolitan scale

Masterplan Urban scale

Chapter D- Architectural project

Megablock of station buildings

Station building

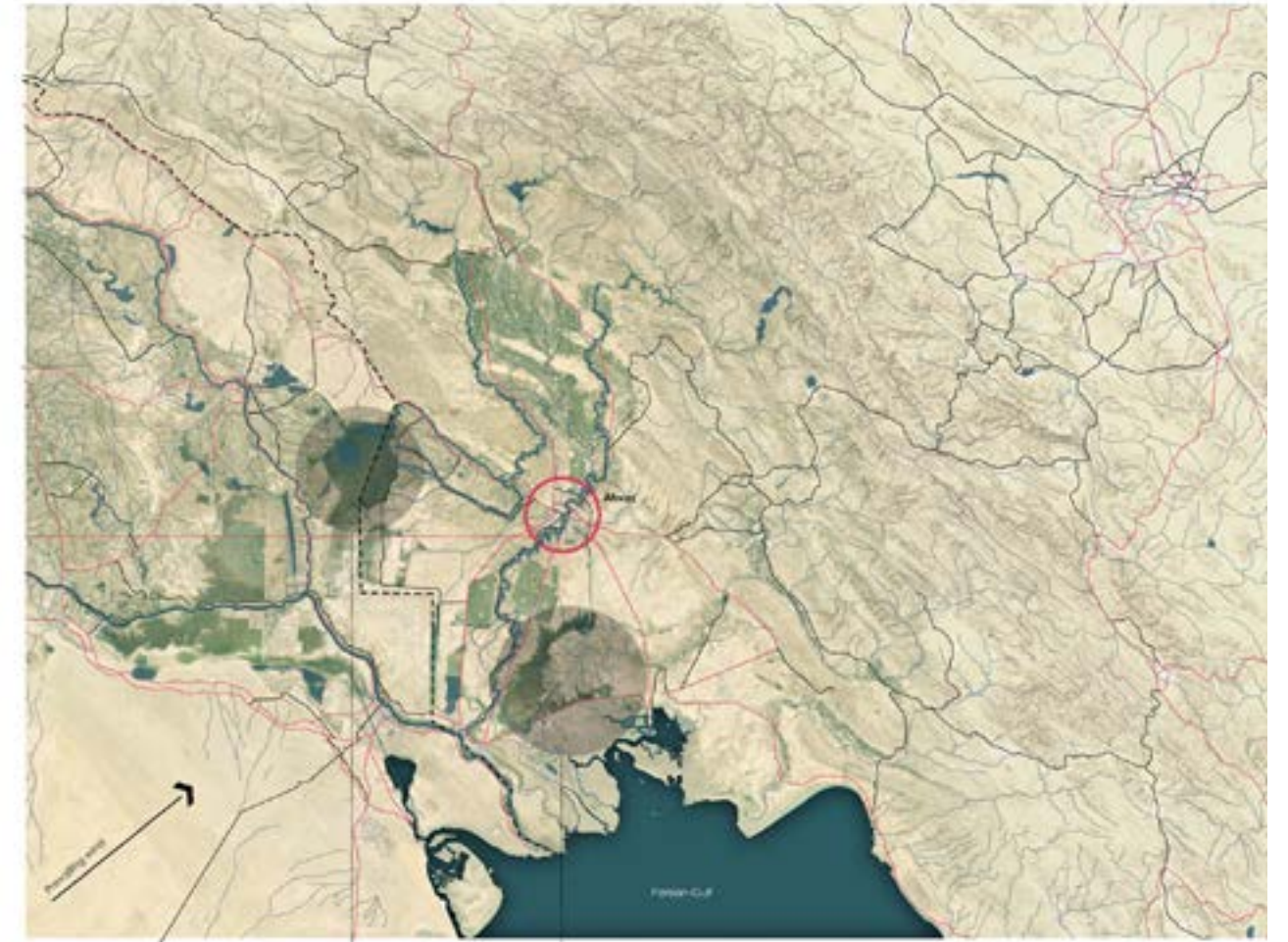


Geography of Location

Ahvaz is located in the plains of Khuzestan province in the lowest parts of Zagros chain mountains. Seasonal and permanent rivers follow from mountain to Khuzestan province and join Persian Gulf. Several branches of these rivers feed two lagoons in the south parts of the city. Topography of Ahvaz is almost without high parts.



Geography of Ahvaz



Ahvaz



Haw al Hawizah lagoon



Shadegan Lagoon

Hydrology of Karun river

The area draining to the Shatt al Arab includes the Euphrates Basin, the Tigris Basin, and two major sub-basins: the Karkheh and the Karun. The Shatt al Arab River is born from the confluence of Euphrates and Tigris Rivers near the Iraqi town of Qurnah and is shared between Iran and Iraq.

The area draining to the Shatt al Arab covers about 1,451,900 km². Excluding the Euphrates and Tigris Basins (upstream of Qurnah), but including the Karkheh and Karun sub-basins.

The Karkheh and Karun Rivers both originate in the Zagros Mountains in Iran and discharge into the Shatt al Arab. Unlike the Karkheh Basin, the Karun Basin lies entirely in Iran.

Annual flow contributes to the Shatt al Arab



Mesopotamia water system



Mesopotamia rivers

Hydrology of Karun river

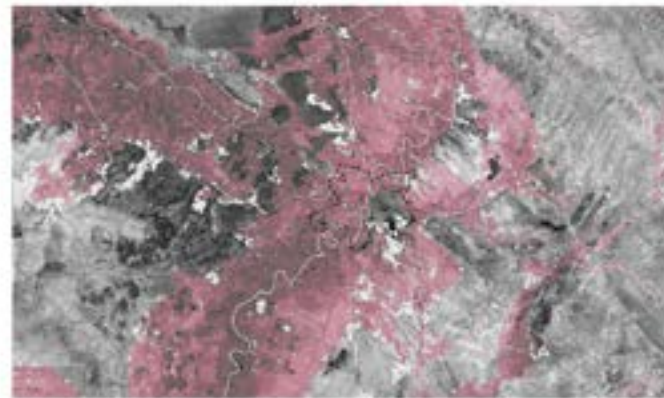
The area draining to the Shatt al Arab includes the Euphrates Basin, the Tigris Basin, and two major sub-basins: the Karkheh and the Karun. The Shatt al Arab River is born from the confluence of Euphrates and Tigris Rivers near the Iraqi town of Qurnah and is shared between Iran and Iraq.

The area draining to the Shatt al Arab covers about 1,451,900 km², excluding the Euphrates and Tigris Basins (upstream of Qurnah), but including the Karkheh and Karun sub-basins.

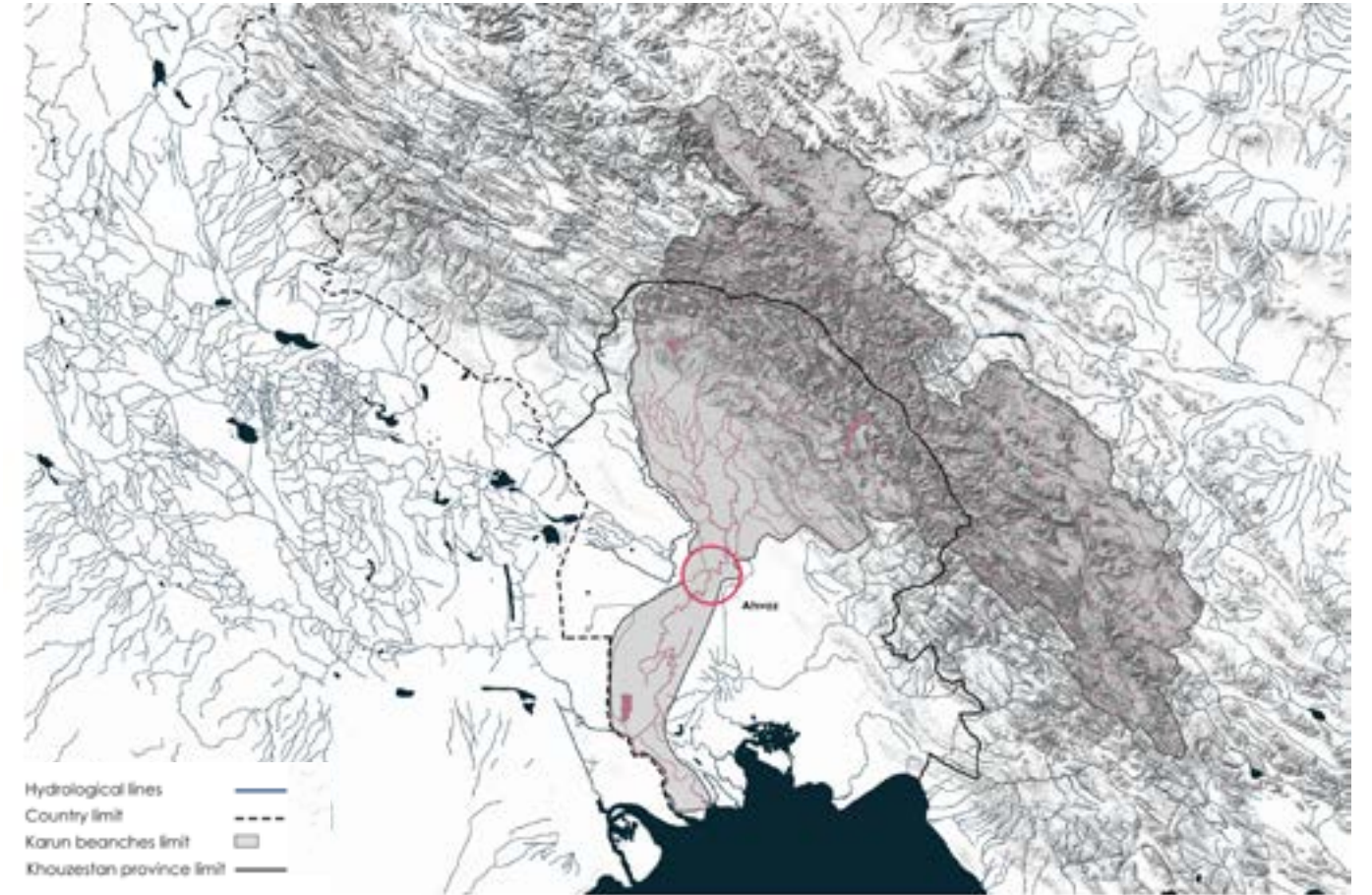
The Karkheh and Karun Rivers both originate in the Zagros Mountains in Iran and discharge into the Shatt Arab. Unlike the Karkheh Basin, the Karun Basin lies entirely in Iran.



Flood risk of Mesopotamia rivers High hazard



Flood risk of Karun High hazard Moderate hazard

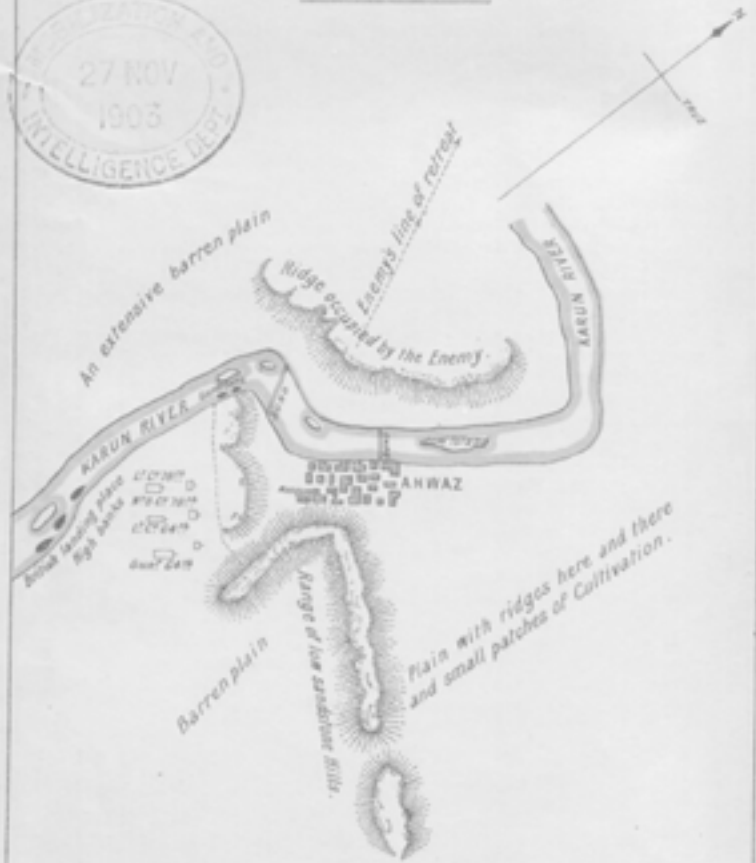


Branches of Karun

To face page 89.

PLATE 5.

Sketch of the Ground in the Neighbourhood of
AHWAZ ON THE KARUN.
 showing the position occupied by the
PERSIAN ARMY
 and the advance of the **BRITISH DETACHMENT** upon
 the Town, March 1857.



Scale, 1 inch = 4 Furlongs.
 4 3 2 1 0 1 2 3 4 Furlongs or 1/2 Mile.

Reproduced from "Outram's Persian Campaign 1857."

N.I.D. N° 694.





