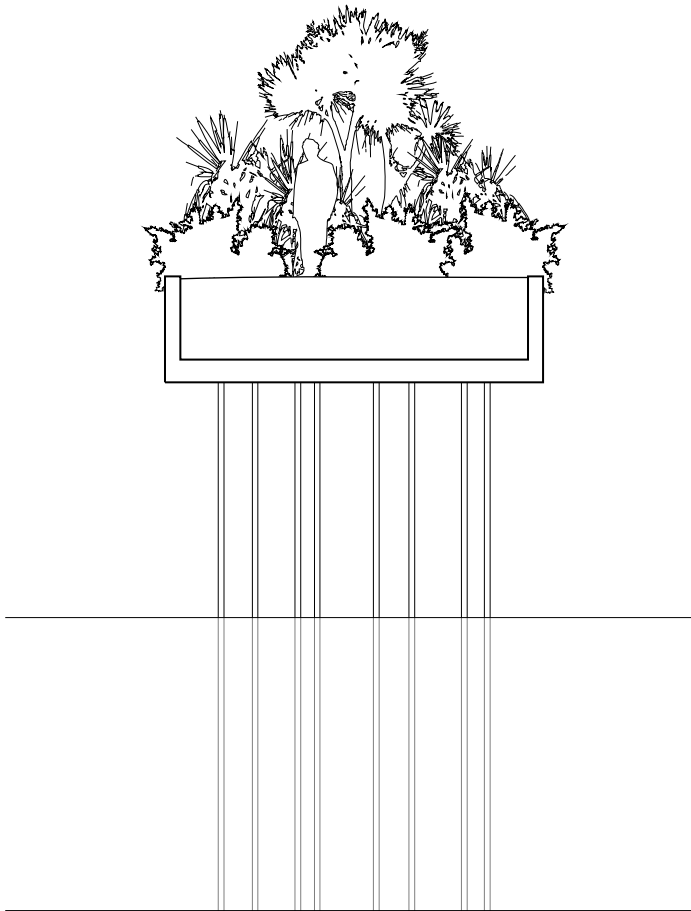
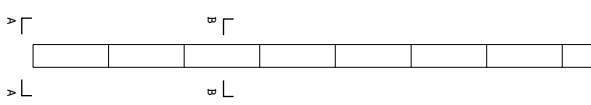




VIEW AA 1:100



SECTION BB 1:100







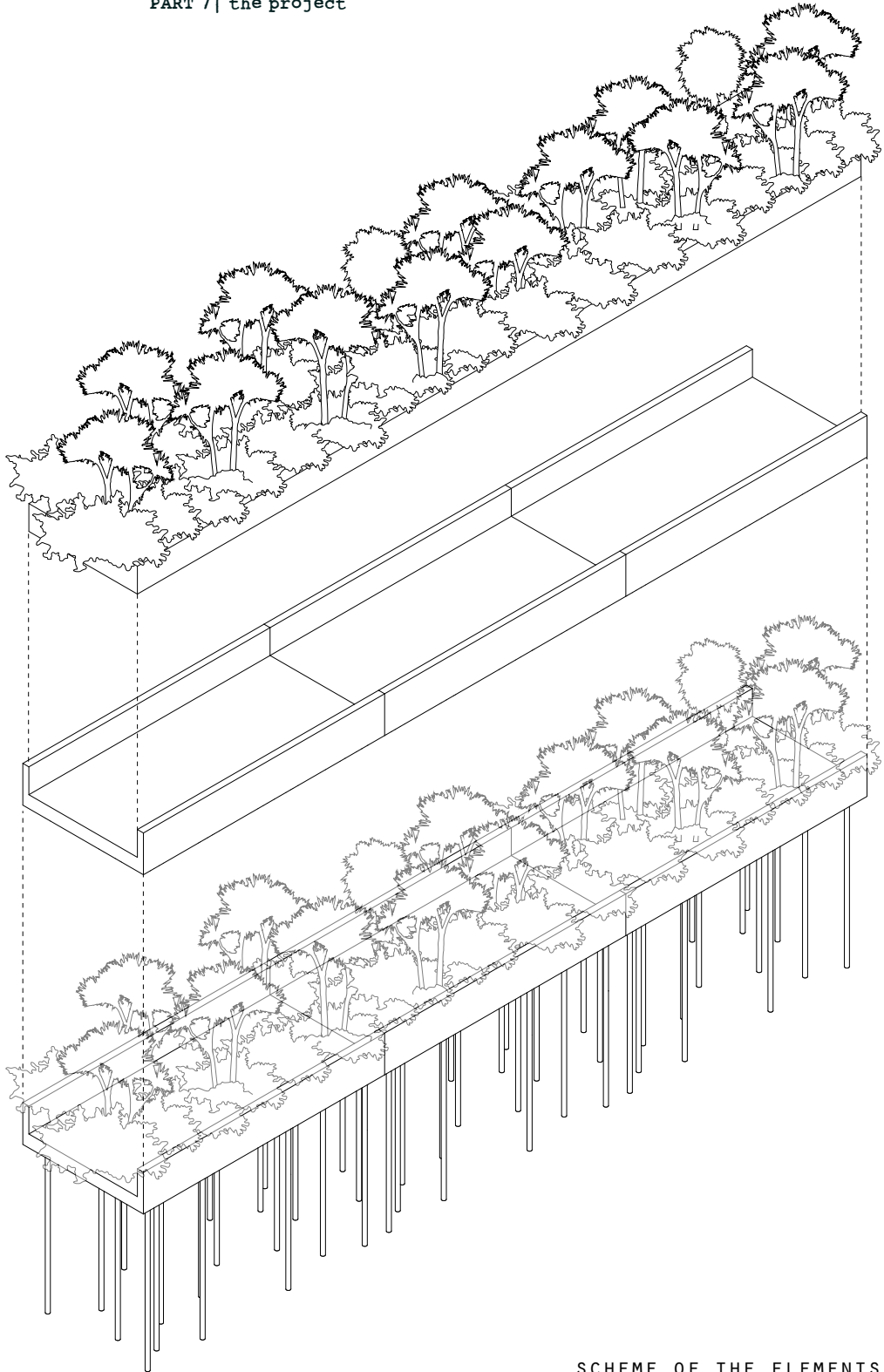






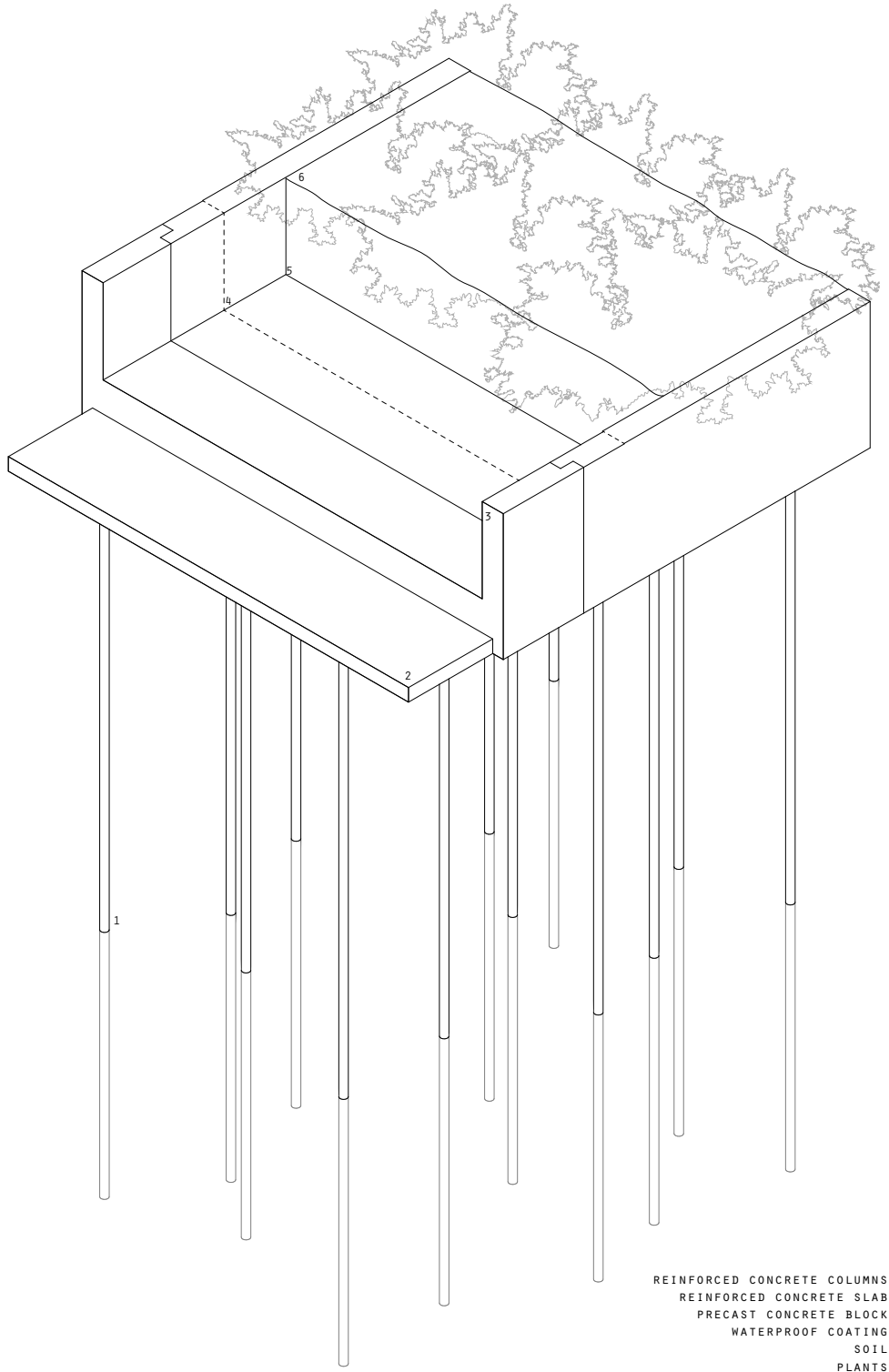






SCHEME OF THE ELEMENTS

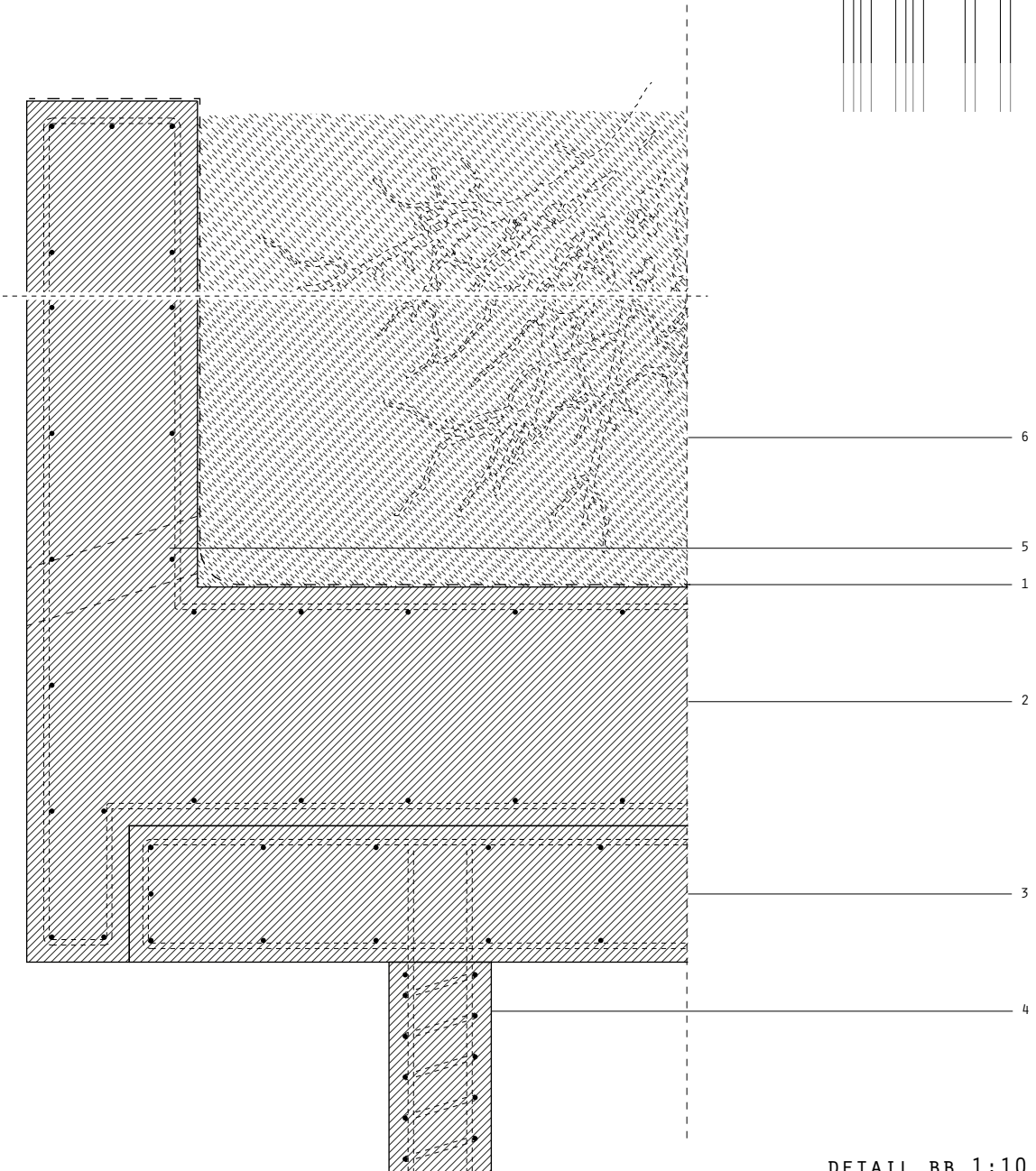
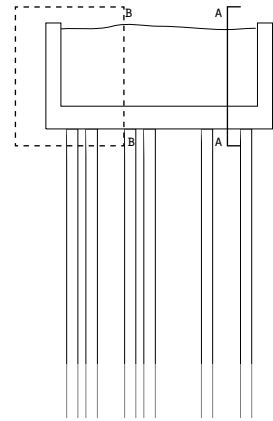




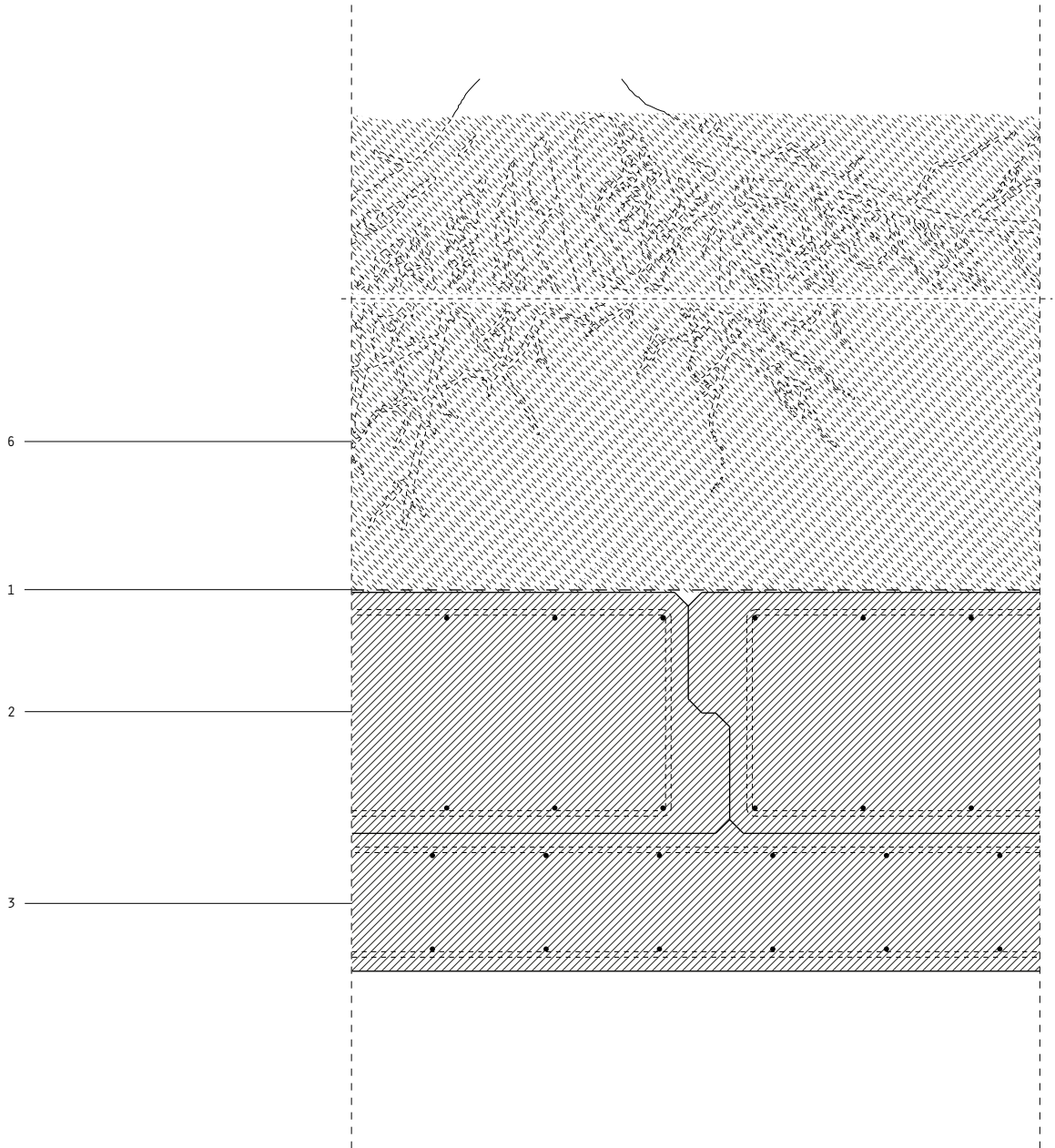
DETAIL

- REINFORCED CONCRETE COLUMNS .1
- REINFORCED CONCRETE SLAB .2
- PRECAST CONCRETE BLOCK .3
- WATERPROOF COATING .4
- SOIL .5
- PLANTS .6

1. BITUMINOUS WATERPROOFING, 3MM
2. PRECAST CONCRETE
3. REINFORCED CONCRETE SLAB, 200MM
4. REINFORCED CONCRETE (COLUMN)
5. DRAINAGE
6. SOIL



DETAIL BB 1:10



DETAIL AA 1:10

IGNORED PRESENCE



NEGLECTION AND ISOLATION OF THE SLAVIC COMMUNITY



TOTAL REMOVAL

# fossalon ex concentration camp

(metaproject)

## TOTAL REMOVAL

Fossalon is situated in the proximity of the city of Grado that, at the beginning of the XX<sup>th</sup> century, was part of the lagoon.

The territory was reclaimed and transformed in a vast agricultural land for the sustenance of the nearby population.

Several groups of people coming from different places went to inhabit the district and to work the land; at the beginning there were families coming from the Veneto region to work for the reclaim, later the exiled population from Istria came to inhabit the southern part of the district and to cultivate the land.

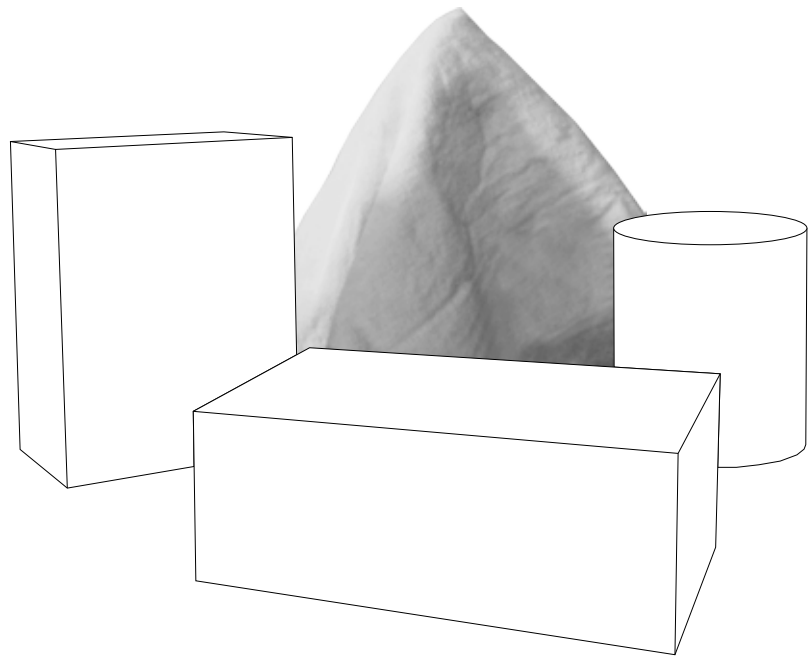
From 1941 to 1943 one of the farms was used as internment camp for a group of Slovenian oppositors who worked in the agricultural fields. While the Slavic community inhabited the land the rest of the people almost ignored them.

The specific theme handled at the site is 'the ignored presence of the forced-labour camp of Slavic people at the reclaimed territory of Fossalon'.

The agricultural complex is placed on the street flanked by the Isonzato river. Along the street there are other buildings with the same characteristics, the only thing that is different is the past as concentration camp of one of them.

Given that its past was ignored in the past and it is still ignored in the present, the aim of the project is to hide it completely to the outside with a dense vegetation. Only when the people are in front of the building they can see it.





## IGNORED PRESENCE || TOTAL REMOVAL

HOW TO GIVE THE 'IMPRESSION' OF THE THEME

CONCEPT

HIDING TO THE OUTSIDE

assume an object placed among other  
objects  
assume an entity that covers it  
the object is still present but you  
cannot define it because you do not see  
its characters  
you may say that there is no object  
under the entity and only the entity  
exists

---



EX CONCENTRATION CAMP

FOSSALON

CITY OF GRADO



ISONZO RIVER

ISONZATO RIVER

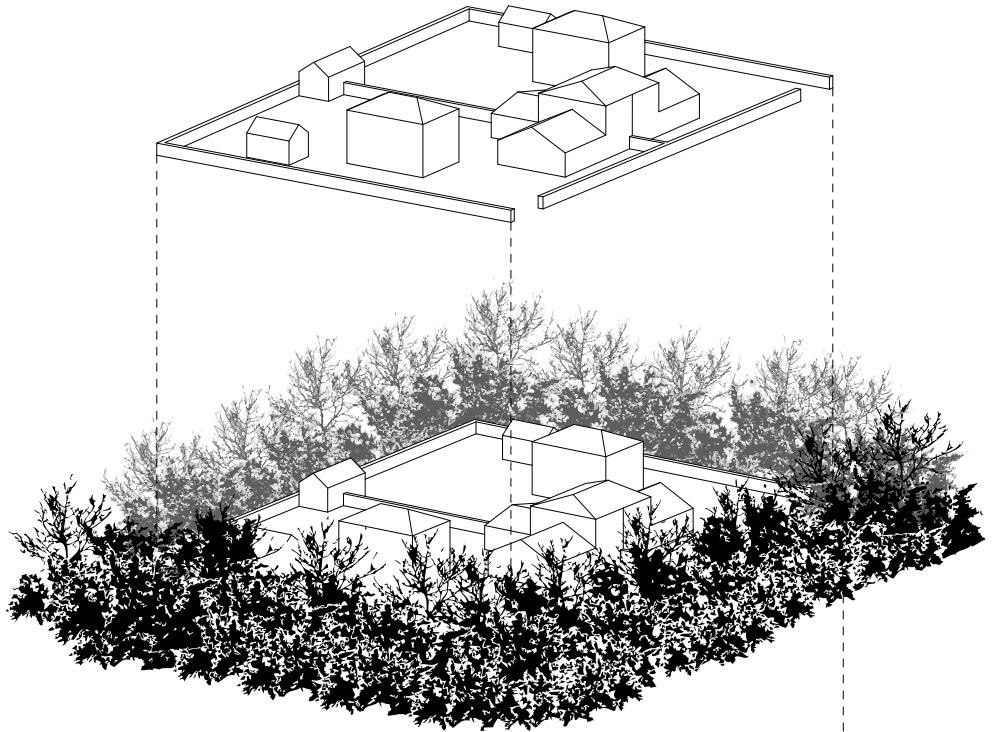




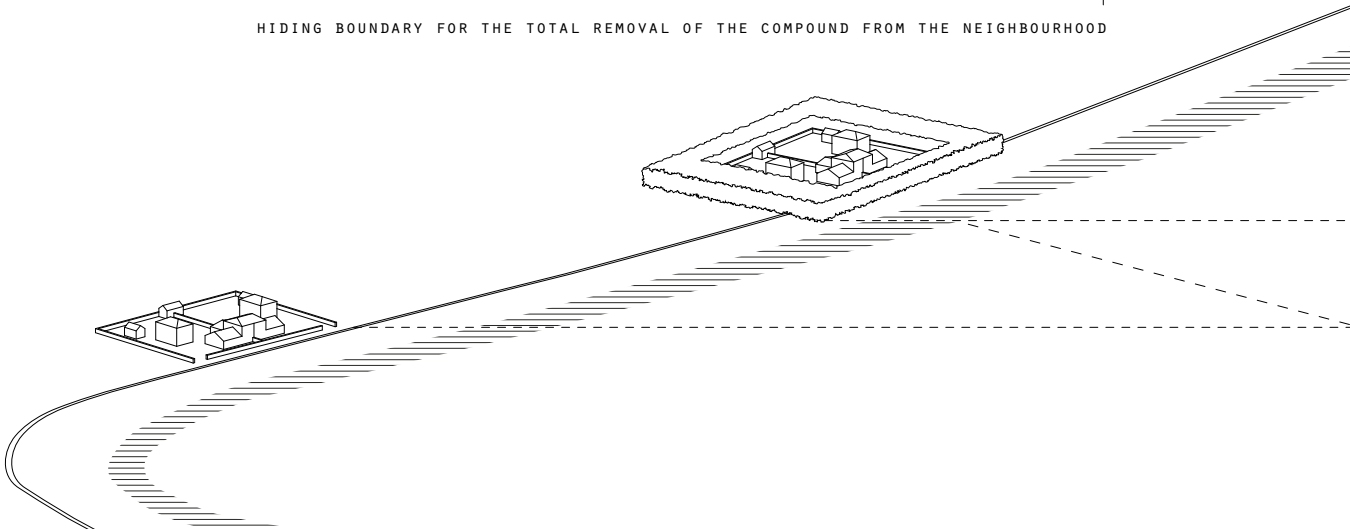


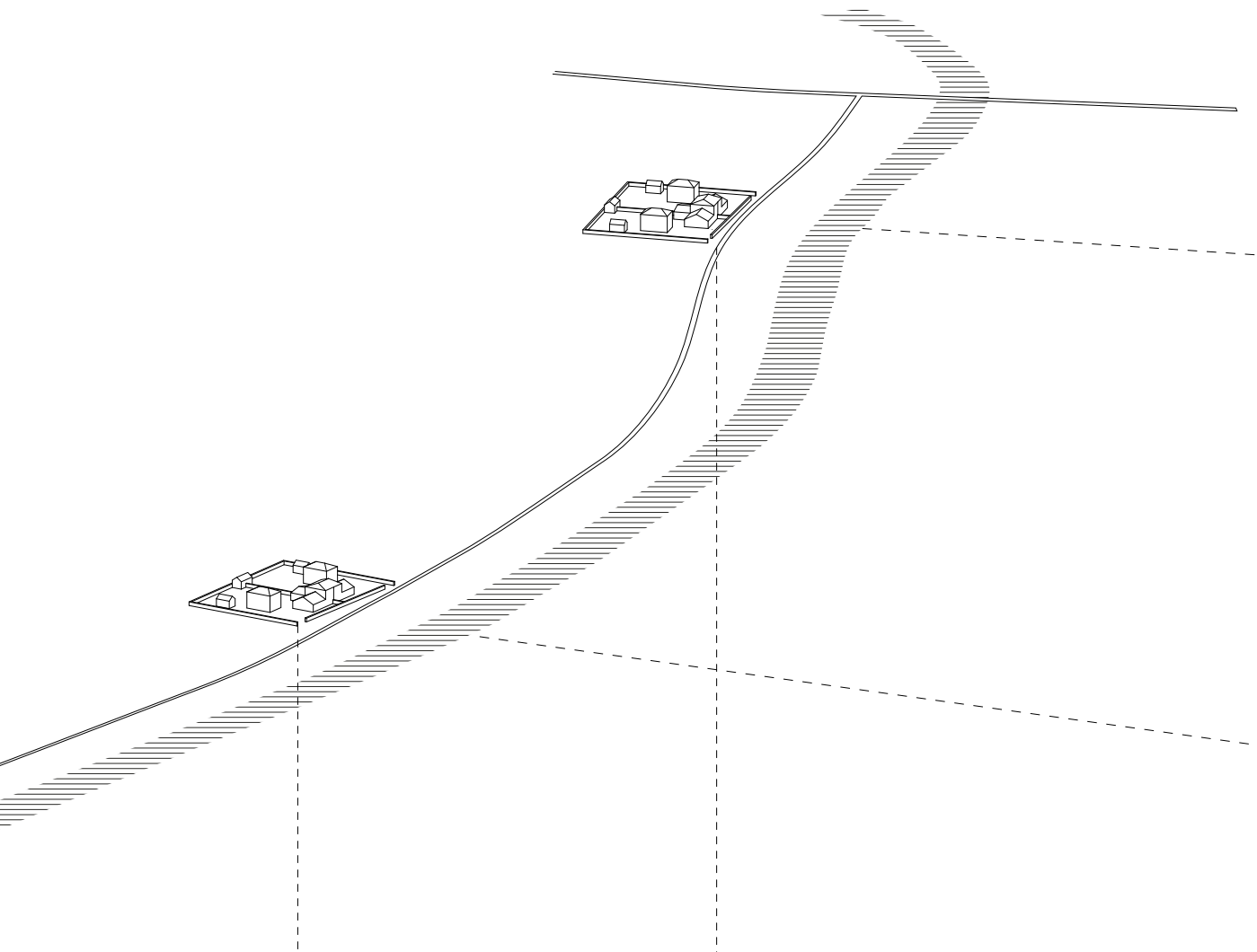






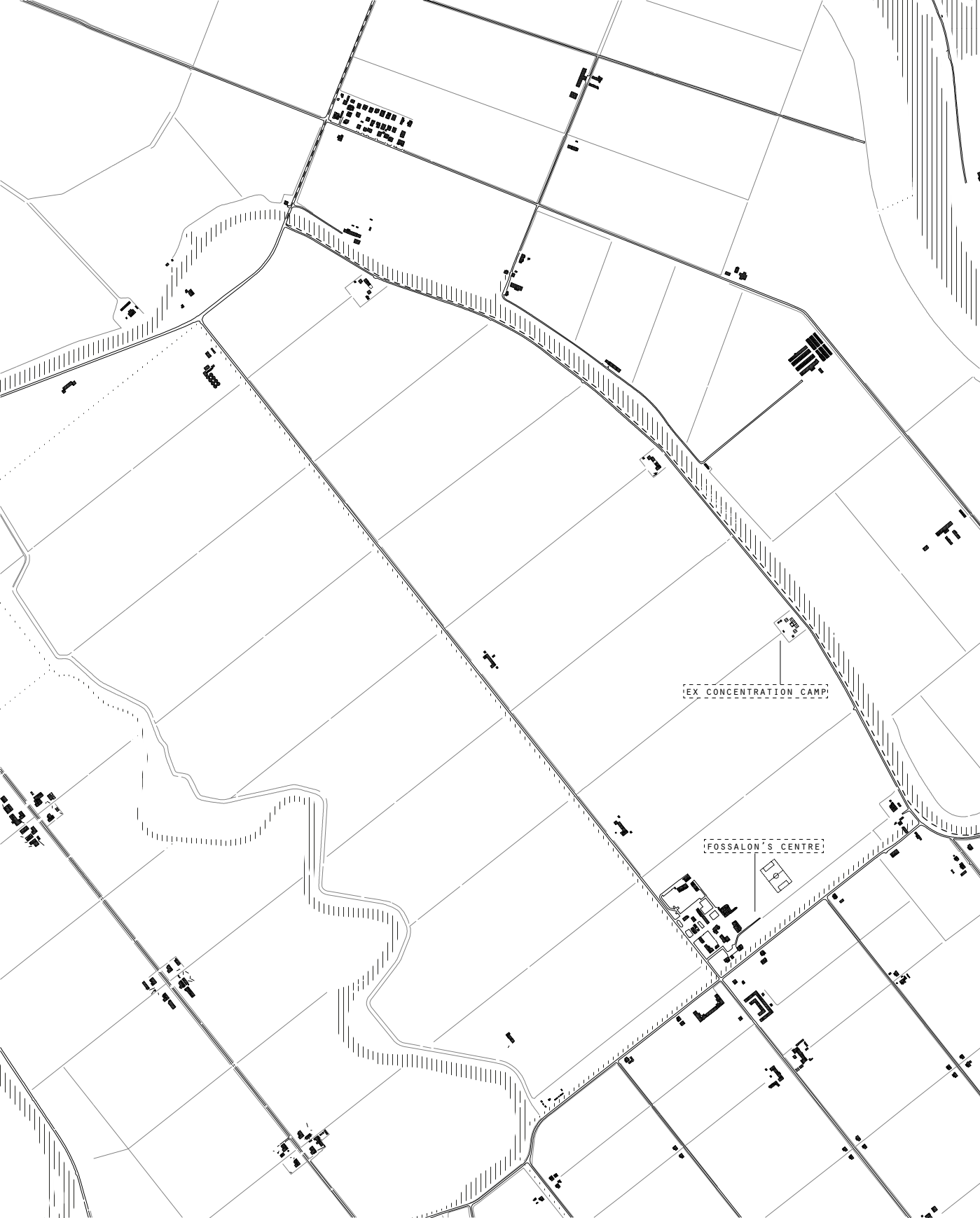
HIDING BOUNDARY FOR THE TOTAL REMOVAL OF THE COMPOUND FROM THE NEIGHBOURHOOD





THE AGRICULTURAL COMPOUNDS ALONG THE STREET ARE VERY SIMILAR TO EACH OTHER THE ONLY DIFFERENCE IS THAT ONE OF THEM WAS TEMPORARILY USED AS CONCENTRATION CAMP





EX CONCENTRATION CAMP

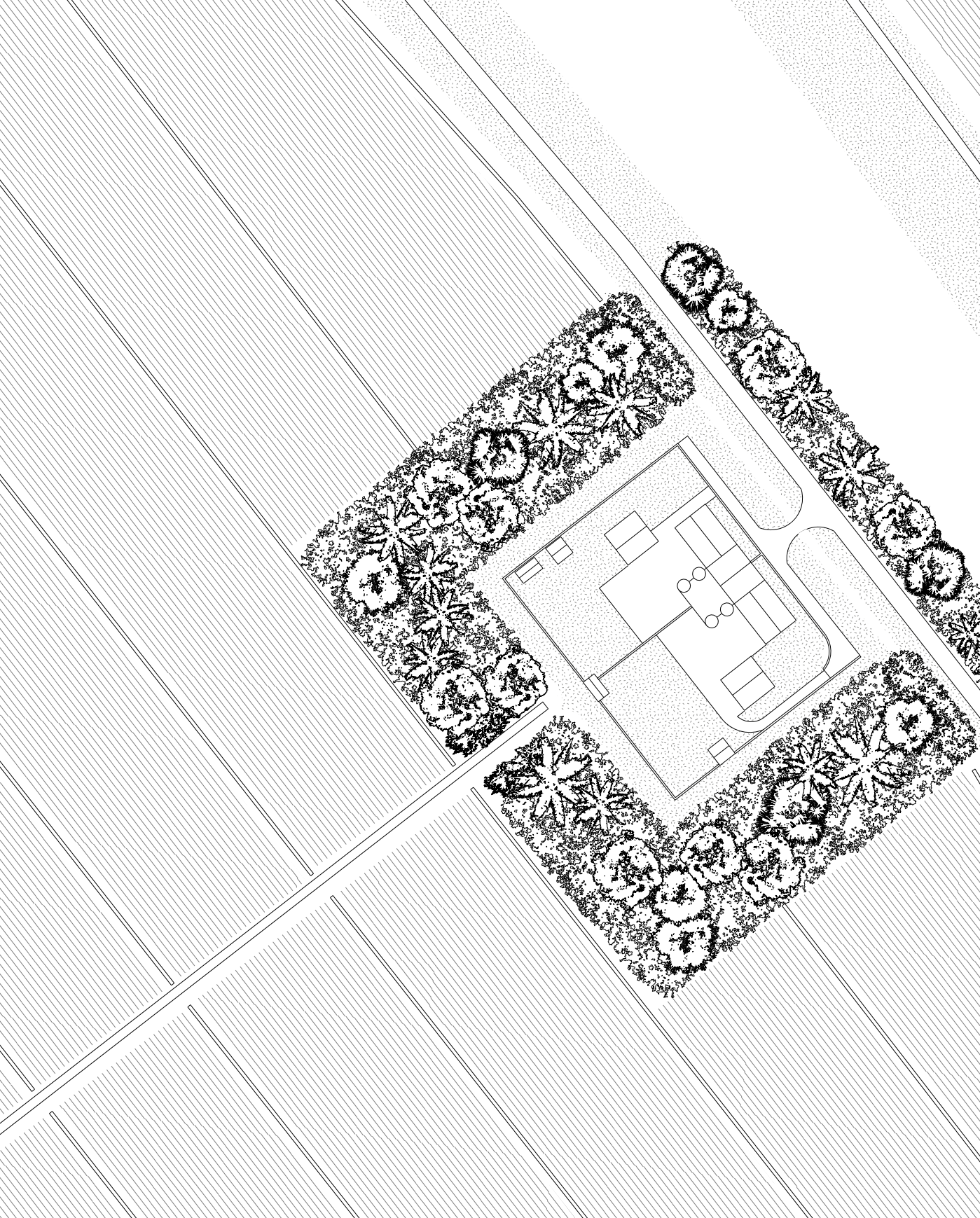
FOSSALON'S CENTRE

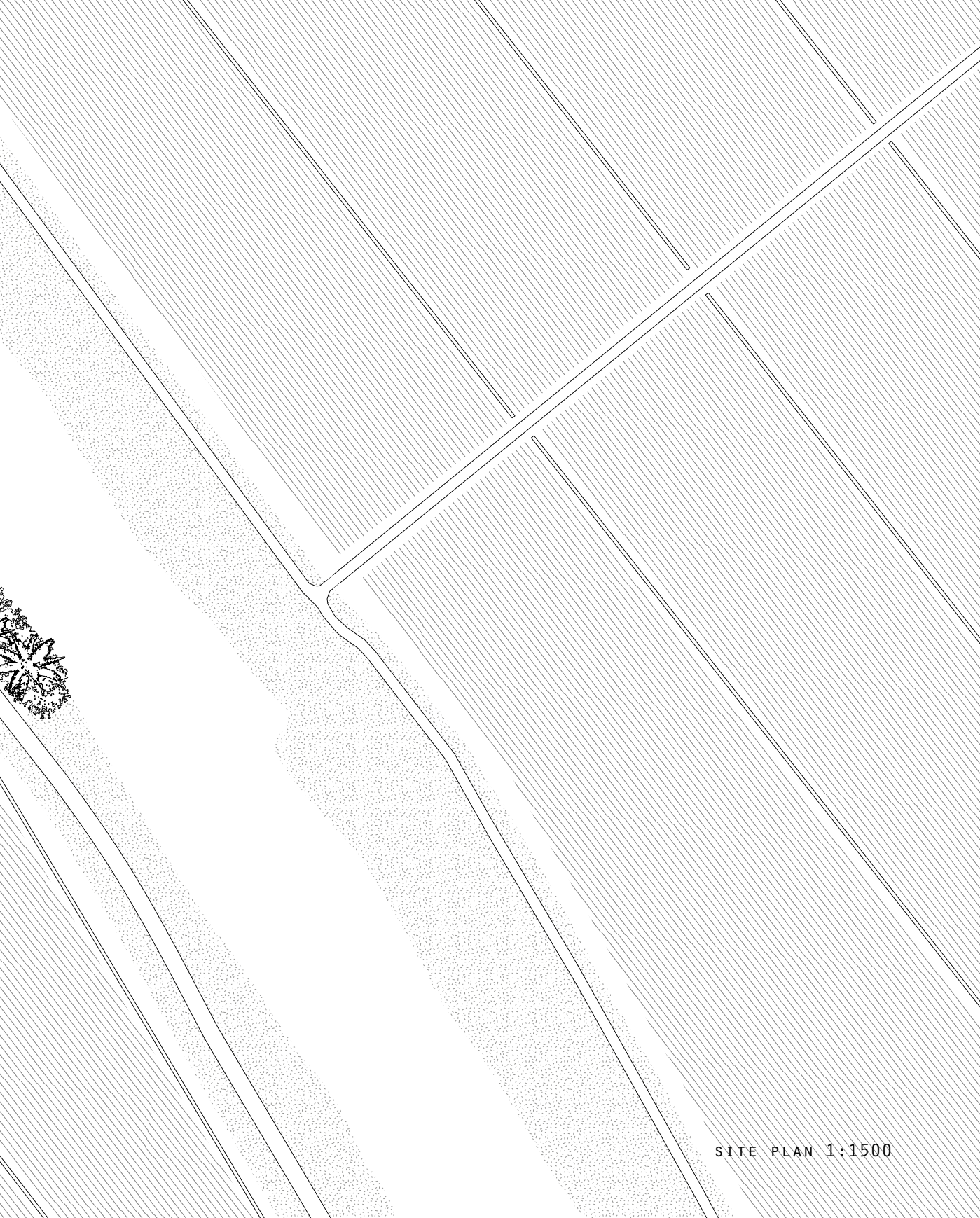


CONA ISLAND

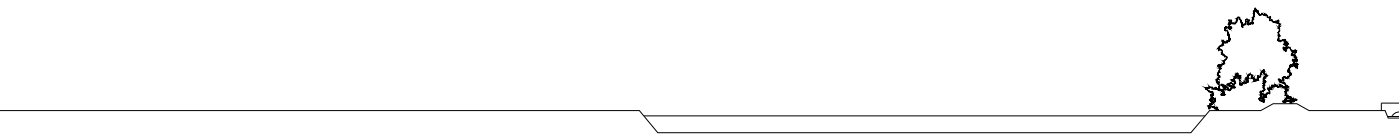
FISHER'S VILLAGE

THE ITINERARY 1:20000

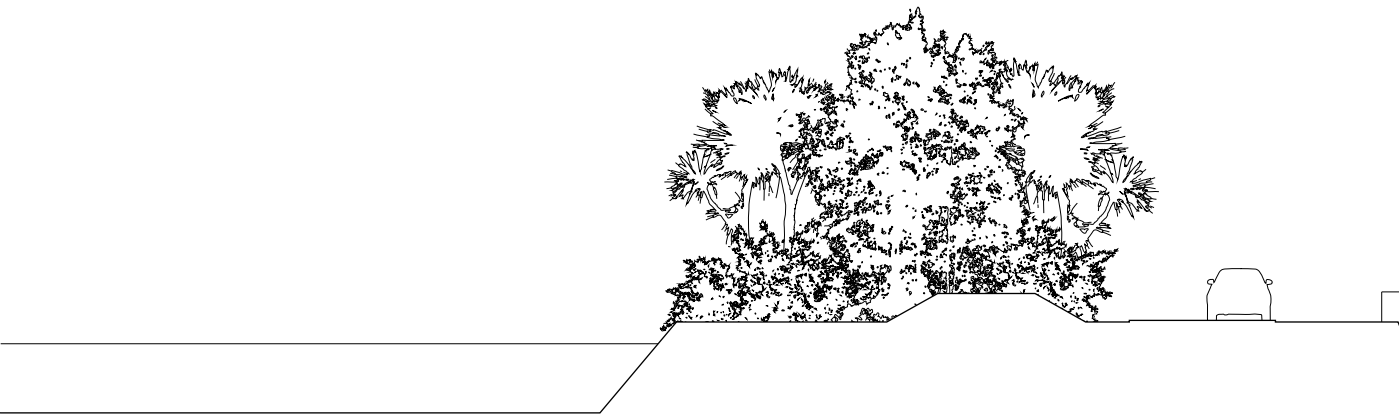


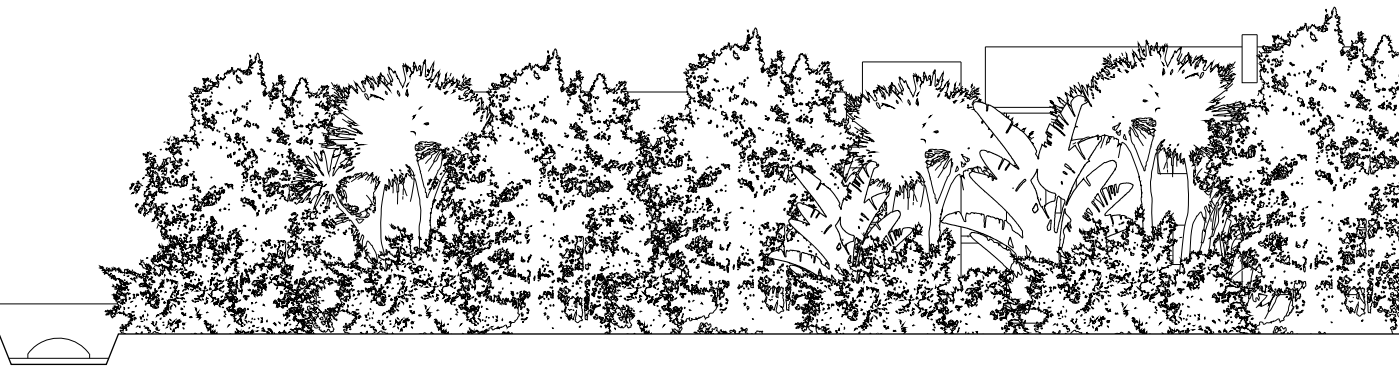
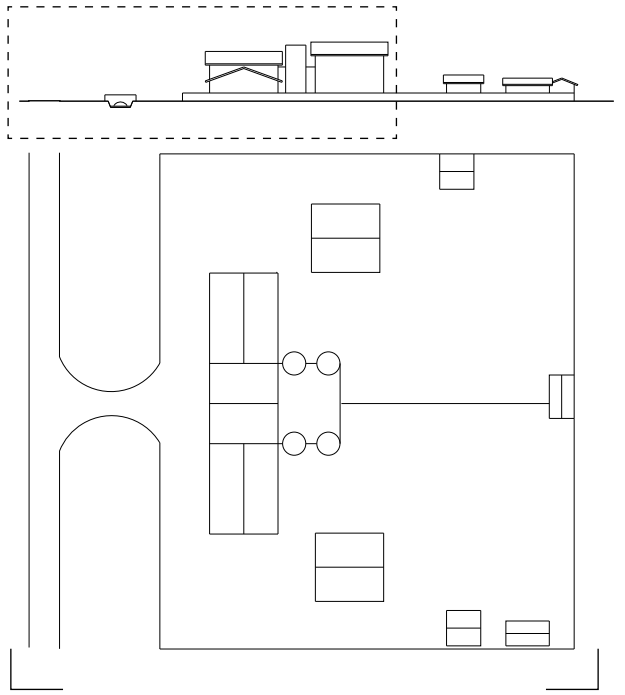


SITE PLAN 1:1500

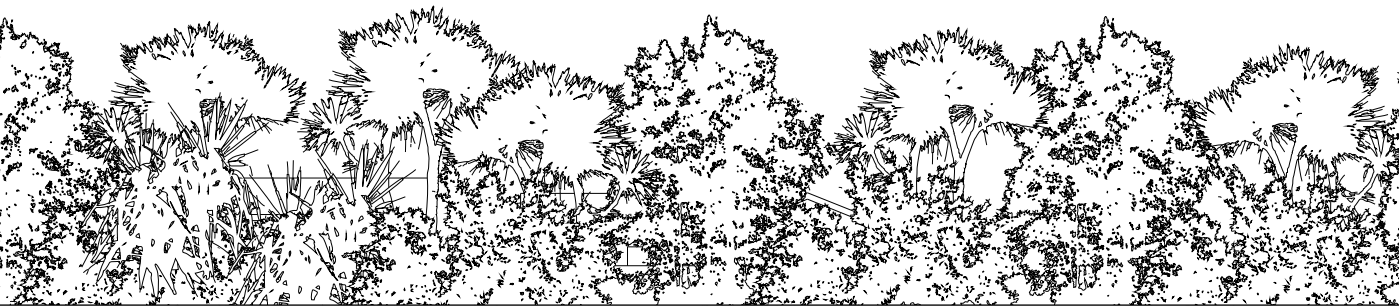


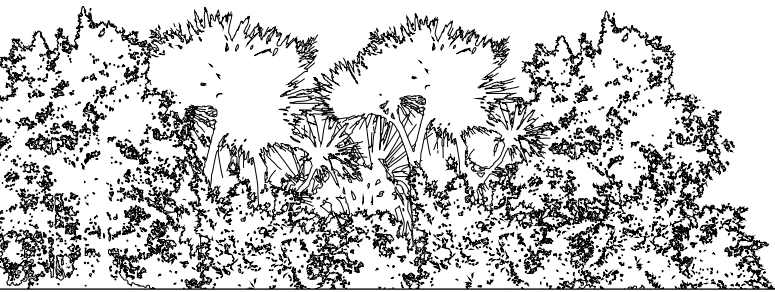
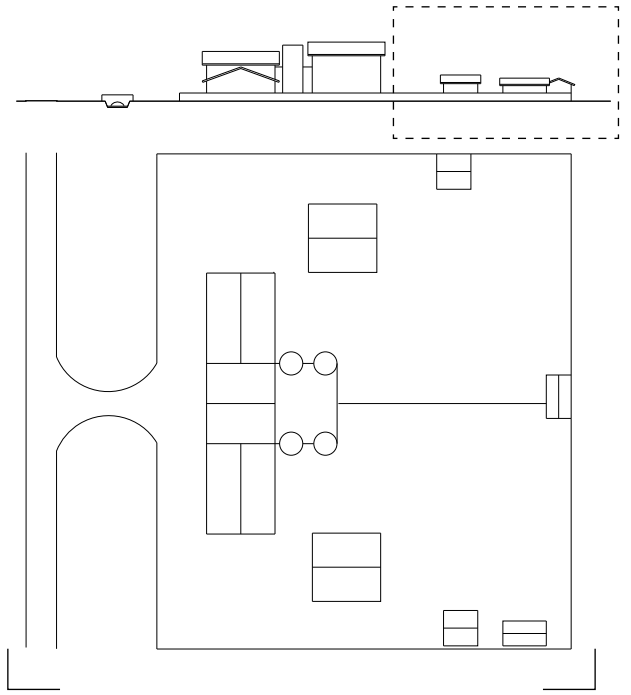


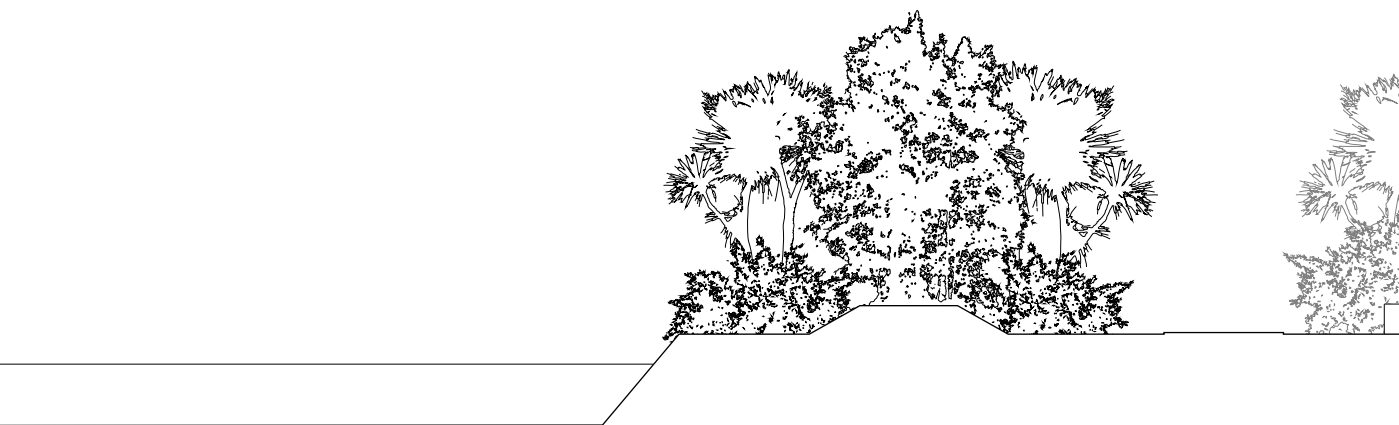


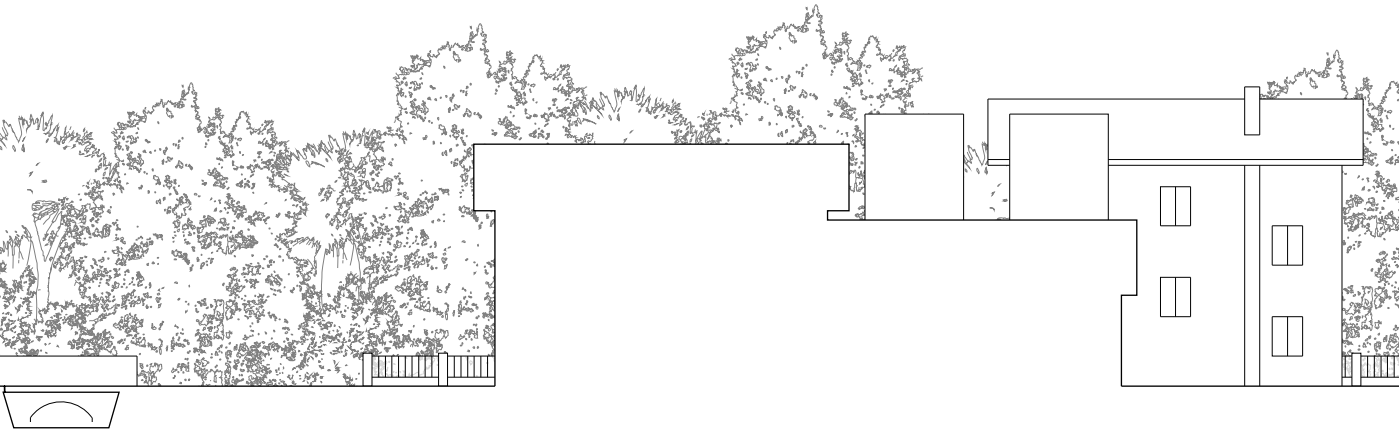
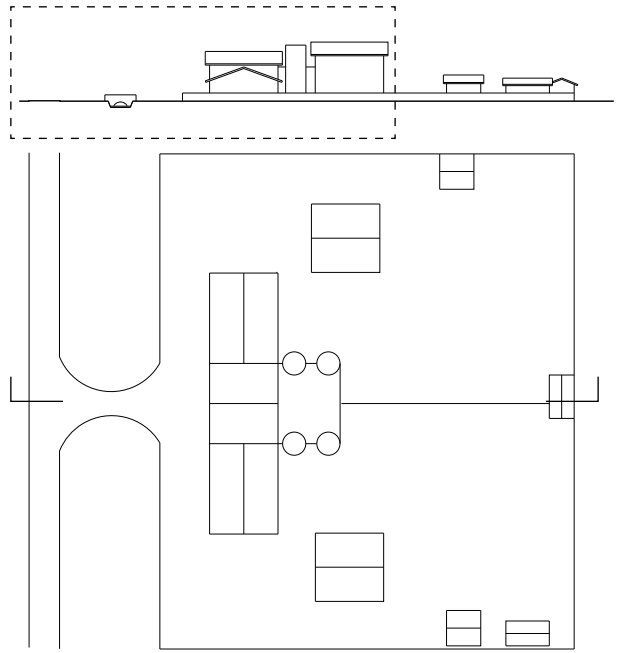


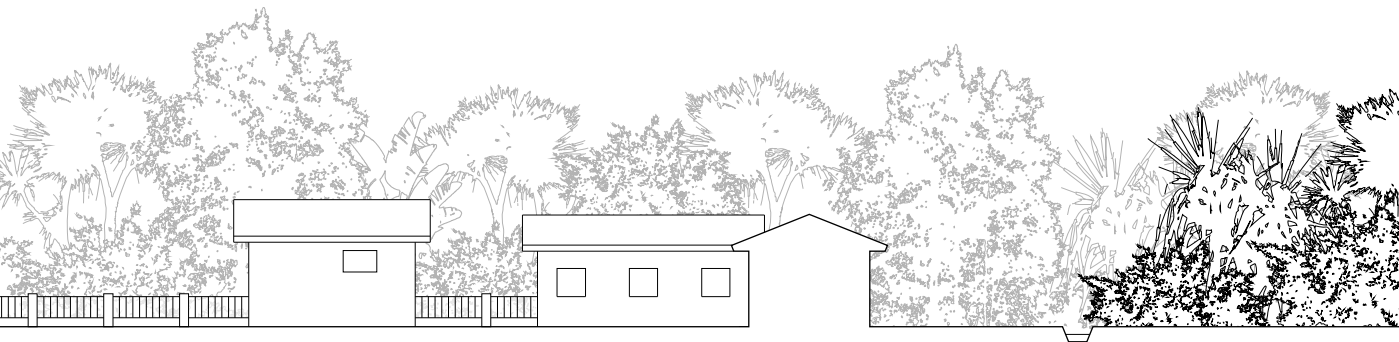


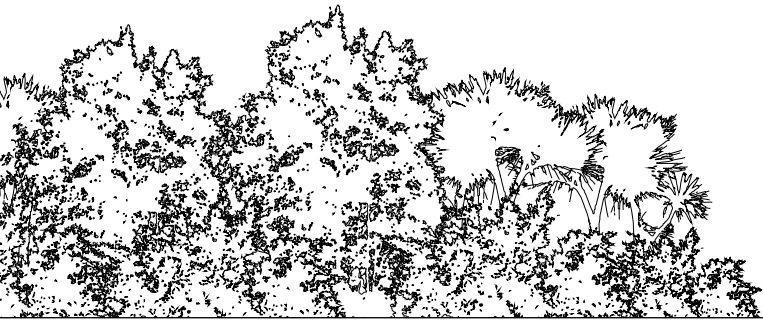
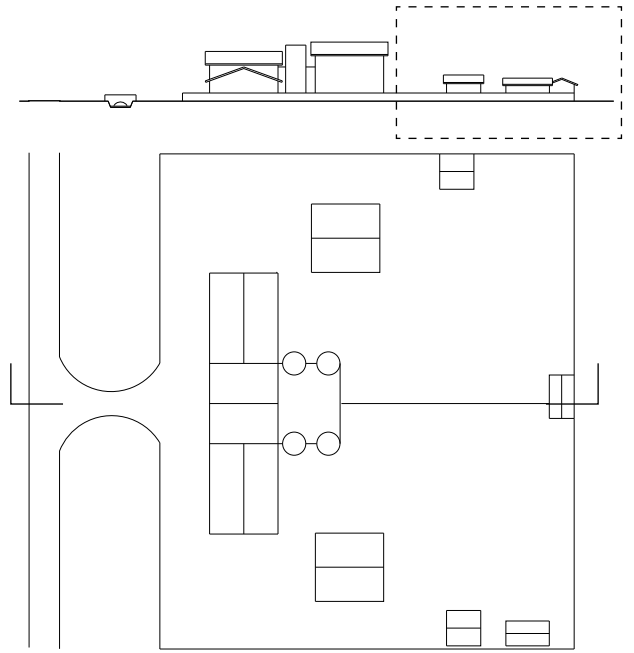


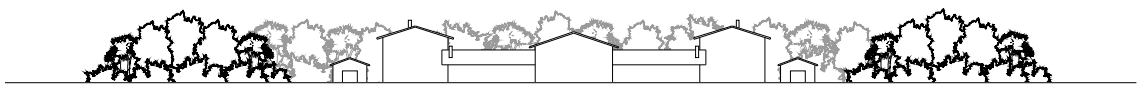




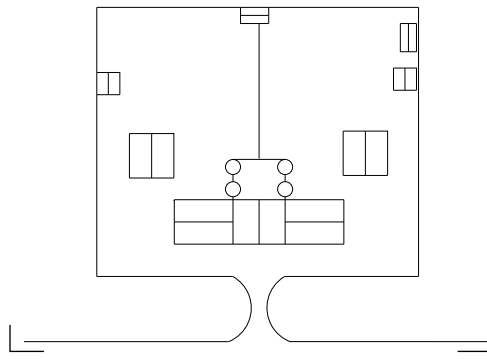








SECTION 1:1500





















## conclusions

The 1985 the Schengen agreement signed for the dissolution of the borders between Eastern and Western Europe. In less than 50 years we have experienced a shift from an impenetrable iron curtain to a more free 'air curtain' as anyone can move from one Country to the other. Furthermore, the entrance of Slovenia and Hungary in the European Union in 2007 has brought down many ideological and political bias that were pretty strong during the previous decades.

Nonetheless, tensions, reciprocal resentments and incomprehensions are still present when dealing with the topic of foibe and Fascist concentration camps.

The dialogue between Italy, Slovenia and Croatia began later than other European countries such as Germany, and even inside the single Countries the topics were not spoken loud.

As the topics are (unfortunately) strictly considered political issues, a open dialogue often involve controversy.

The research done at the beginning of the thesis were not easy to fulfill. The sources were sometimes contradictory and it was difficult to obtain specific information from the municipalities.

For this reason, the hope of this project is to stimulate a positive debate, (without ideological/political implications) with the simple re-activation of the sites. Europe, as a Community, needs to heal the wounds of the past if it wants to protract to the future its ideology.



WorkYourfingers®

april 2014