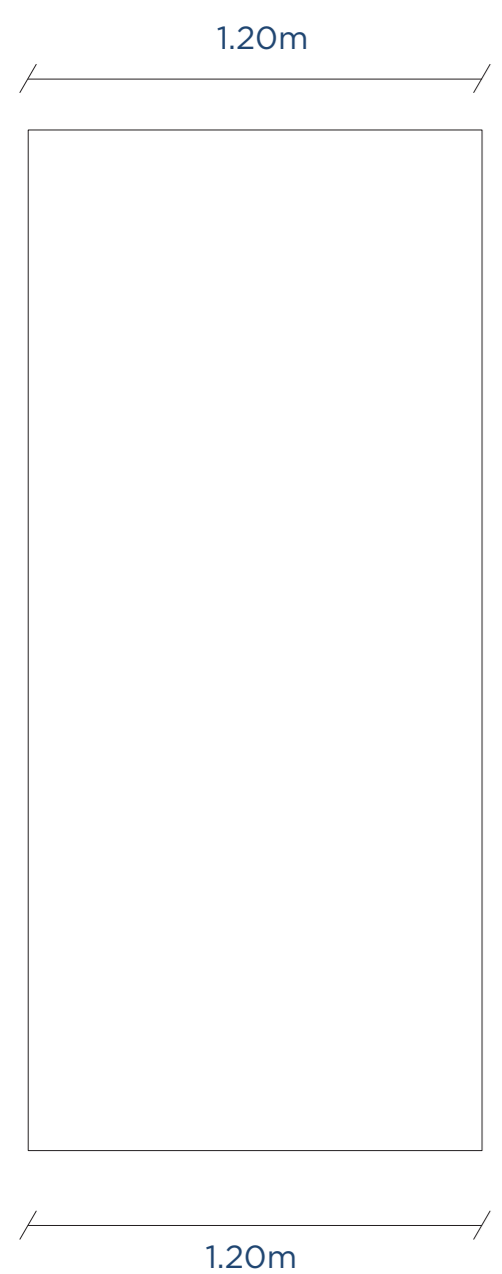


ABACO MODULI

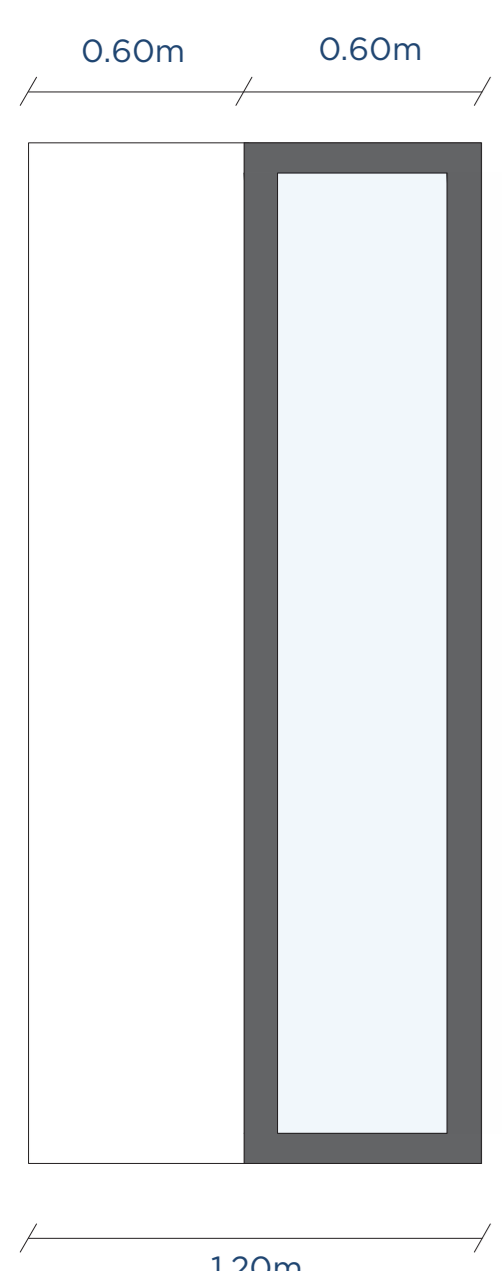
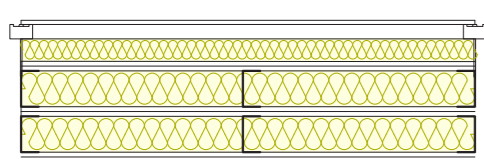
scala 1:20



T1

Embodied Carbon
GWP: 220,15 kgCO₂e

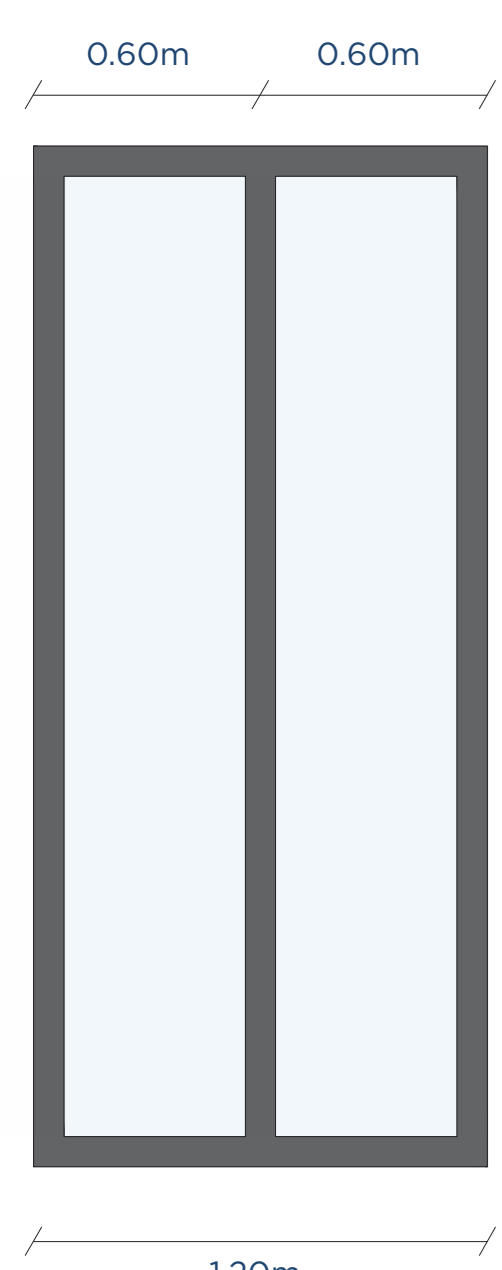
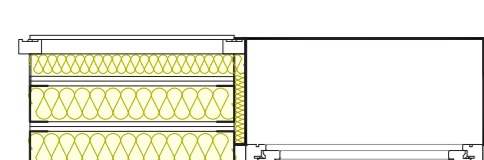
Embodied Energy
PERT: 1034,13 MJ
PERNT: 4164,21 MJ



T2

Embodied Carbon
GWP: 303,96 kgCO₂e

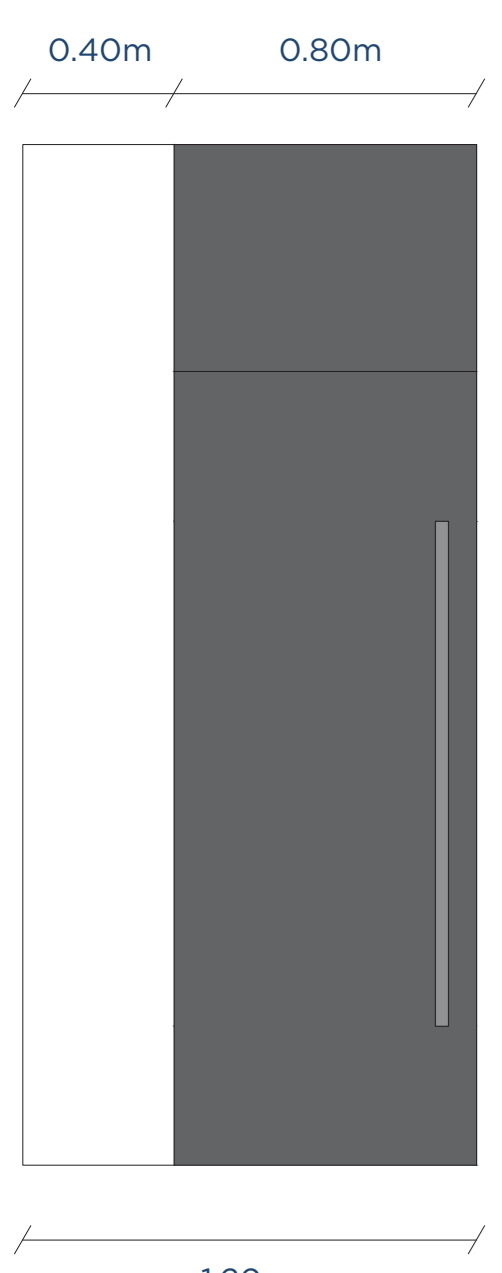
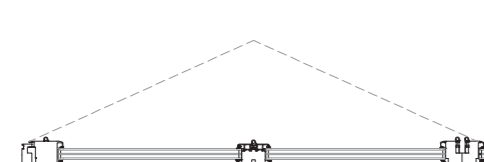
Embodied Energy
PERT: 774,30 MJ
PERNT: 4810,02 MJ



T3

Embodied Carbon
GWP: 387,78 kgCO₂e

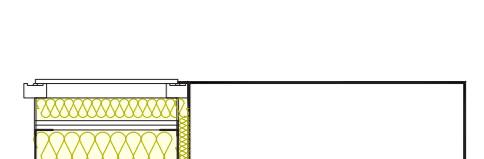
Embodied Energy
PERT: 514,48 MJ
PERNT: 5455,84 MJ



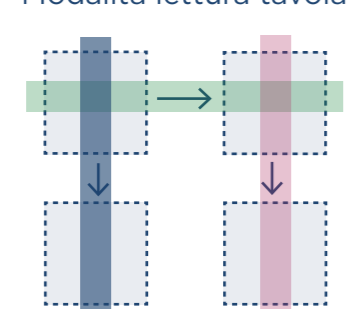
T4

Embodied Carbon
GWP: 549,25 kgCO₂e

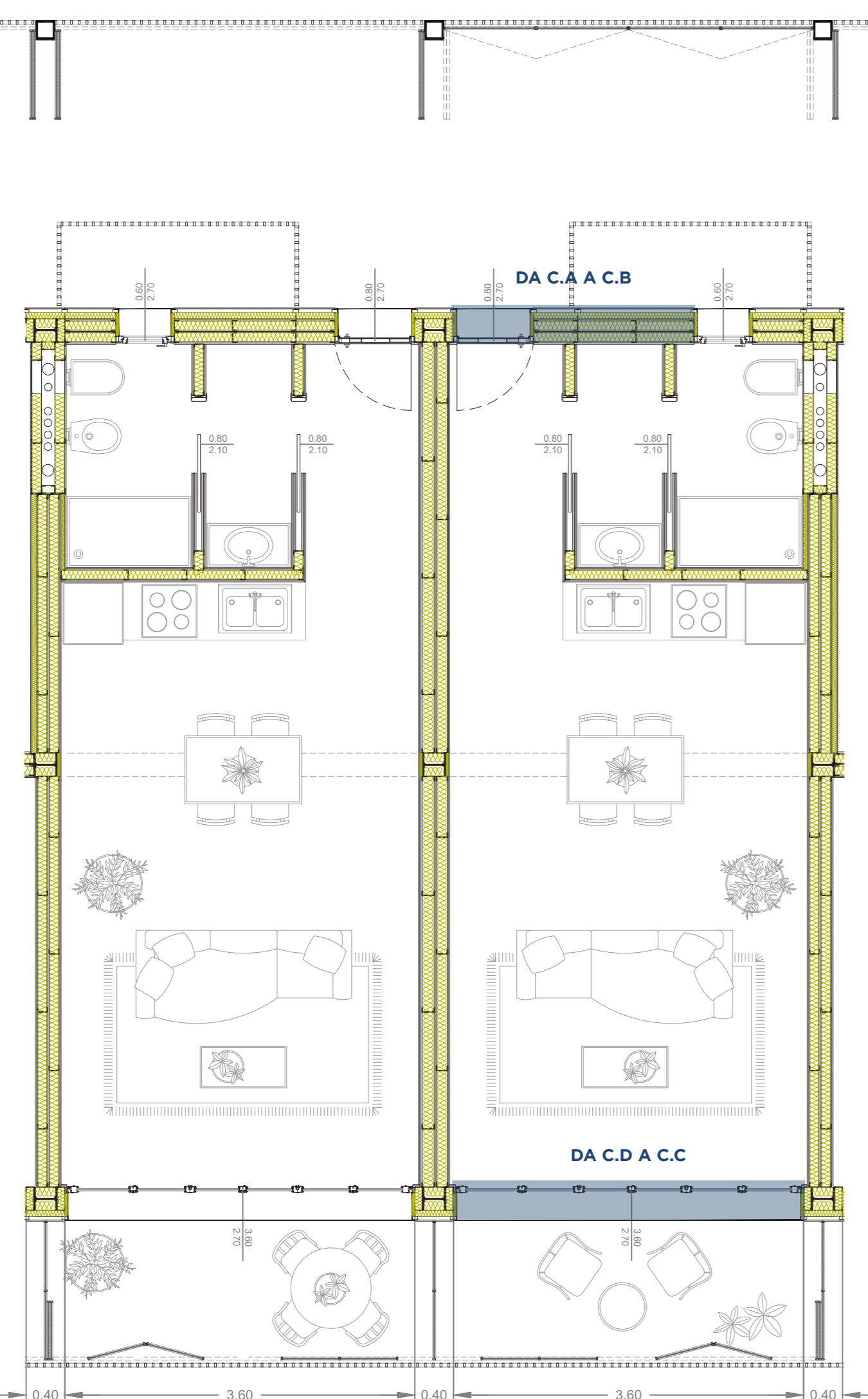
Embodied Energy
PERT: 1221,54 MJ
PERNT: 9615,82 MJ



Modalità lettura tavola



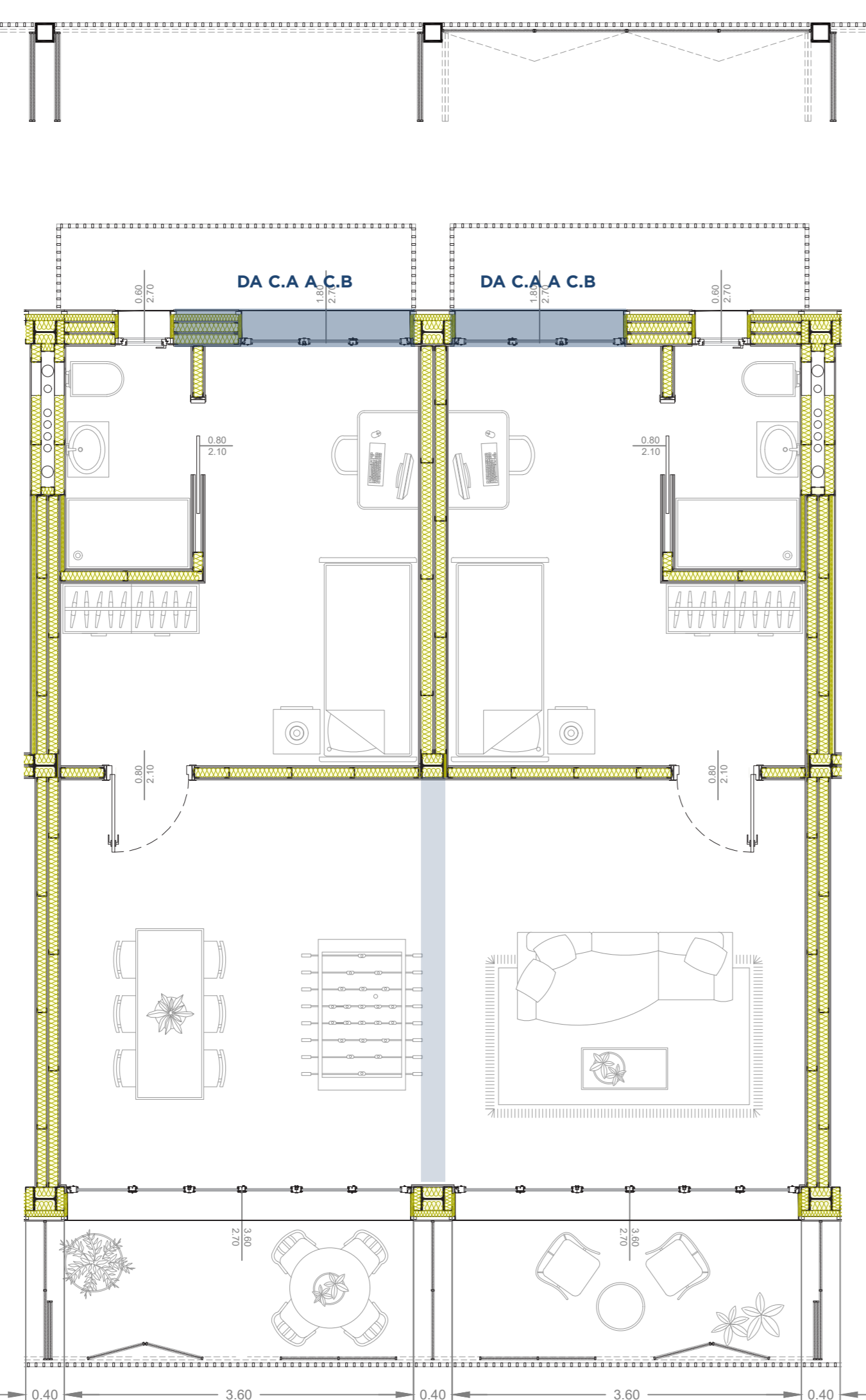
TIPOLOGIA T2 + T2
scala 1:50



2° GRADO DELLA FLESSIBILITA'

Variazione destinazione d'uso

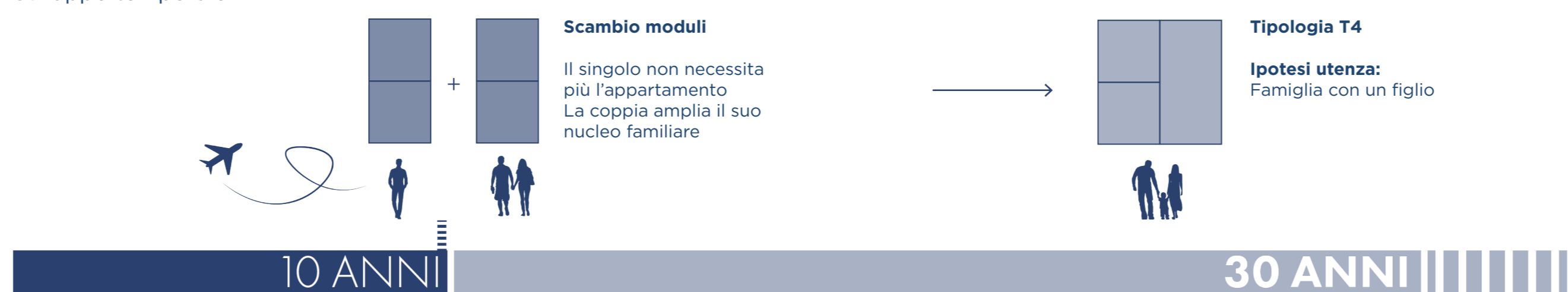
TIPOLOGIA T1 + T1
scala 1:50



1° GRADO DELLA FLESSIBILITA'

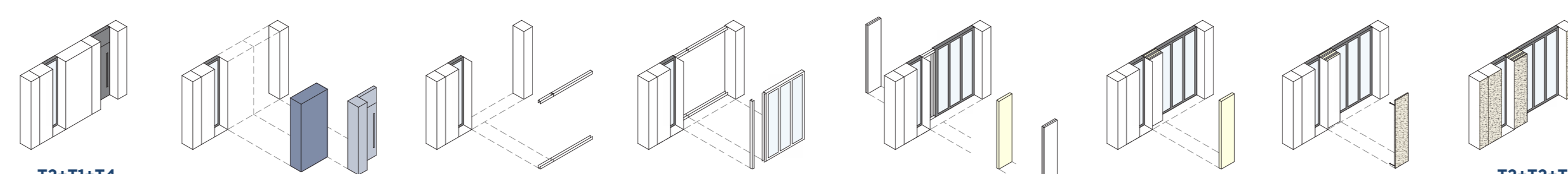
Scambio modulare

Sviluppo temporale



Tipologie T2
Ipotesi utenza:
Singolo (studente/lavoratore)
Coppia

Fasi di sostituzione e assemblaggio da C.A a C.B



SOSTITUZIONE PARZIALE

COMPOSIZIONE A → COMPOSIZIONE B

Embodied Carbon
GWP: 1073,36 kgCO₂e
Embodied Energy
PERT: 3029,97 MJ
PERNT: 18590,05 MJ

Embodied Carbon
GWP: 691,74 kgCO₂e
Embodied Energy
PERT: 10265,86 MJ

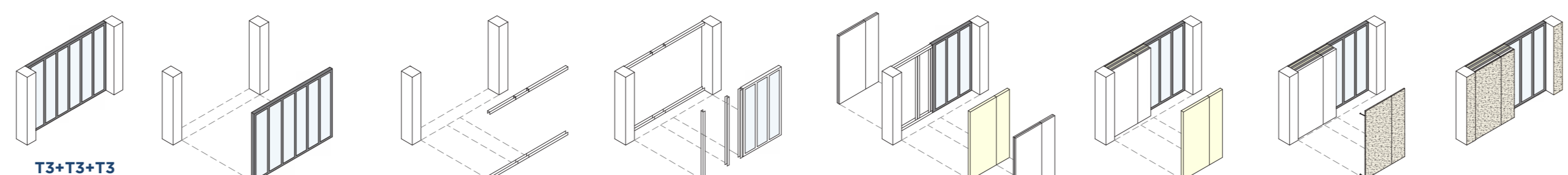
SOSTITUZIONE TOTALE

COMPOSIZIONE A INTERO → COMPOSIZIONE B INTERO

Embodied Carbon
GWP: 1073,36 kgCO₂e
Embodied Energy
PERT: 3029,97 MJ
PERNT: 18590,05 MJ

Embodied Carbon
GWP: 995,71 kgCO₂e
Embodied Energy
PERT: 2063,08 MJ
PERNT: 15075,88 MJ

Fasi di sostituzione e assemblaggio da C.D a C.C



SOSTITUZIONE TOTALE

COMPOSIZIONE D → COMPOSIZIONE C

Embodied Carbon
GWP: 1163,34 kgCO₂e
Embodied Energy
PERT: 1543,44 MJ
PERNT: 16367,52 MJ

Embodied Carbon
GWP: 911,89 kgCO₂e
Embodied Energy
PERT: 2322,91 MJ
PERNT: 14430,07 MJ

3° GRADO DELLA FLESSIBILITA'

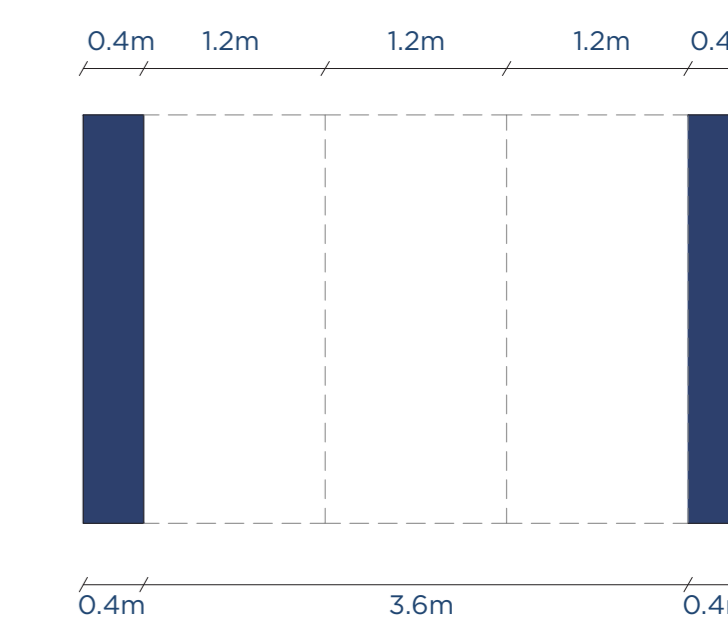
Configurazioni spaziali nel tempo

TIPOLOGIA T4
scala 1:50

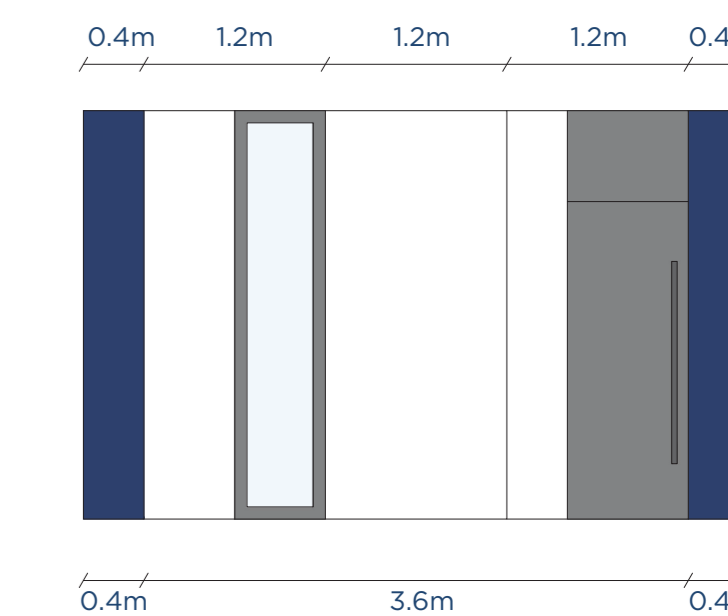


COMPOSIZIONI MODULI

scala 1:50



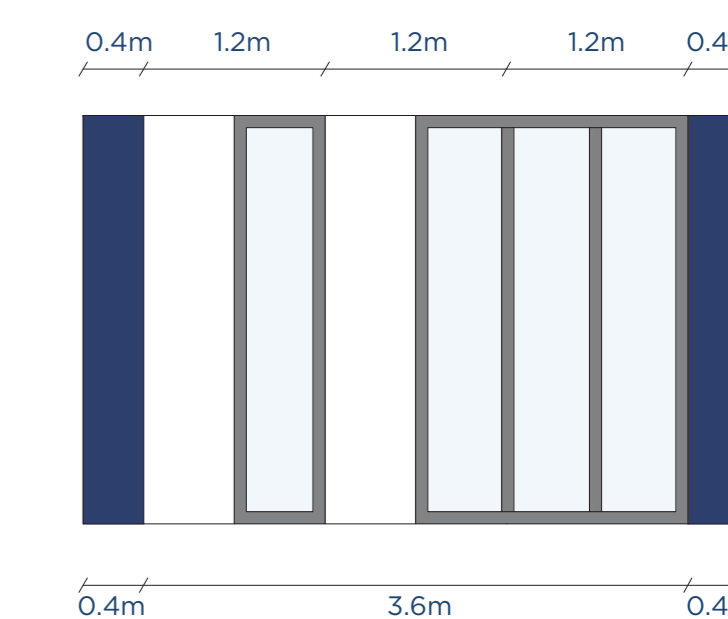
BASE:
Sistema strutturale a pilastri fisso



COMPOSIZIONE A:
Combinazione T2+T1+T4

Embodied Carbon
GWP: 1073,362 kgCO₂e

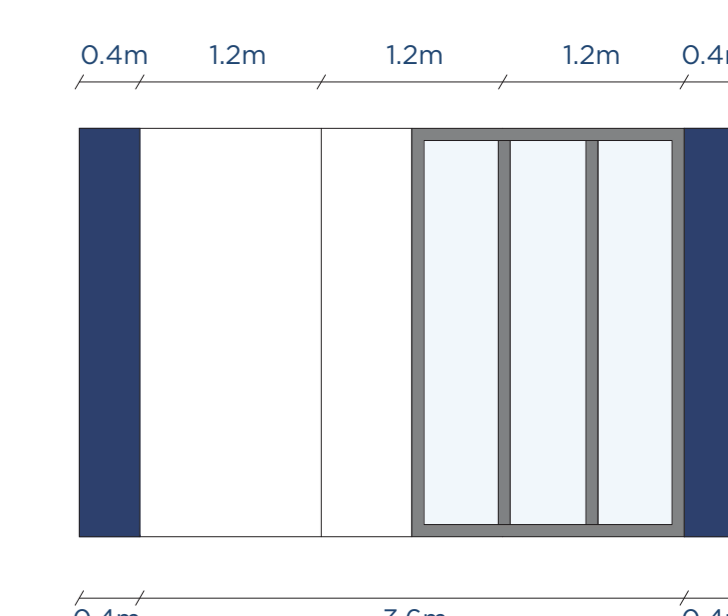
Embodied Energy
PERT: 3029,97 MJ
PERNT: 18590,05 MJ



COMPOSIZIONE B:
Combinazione T2+T2+T3

Embodied Carbon
GWP: 995,7 kgCO₂e

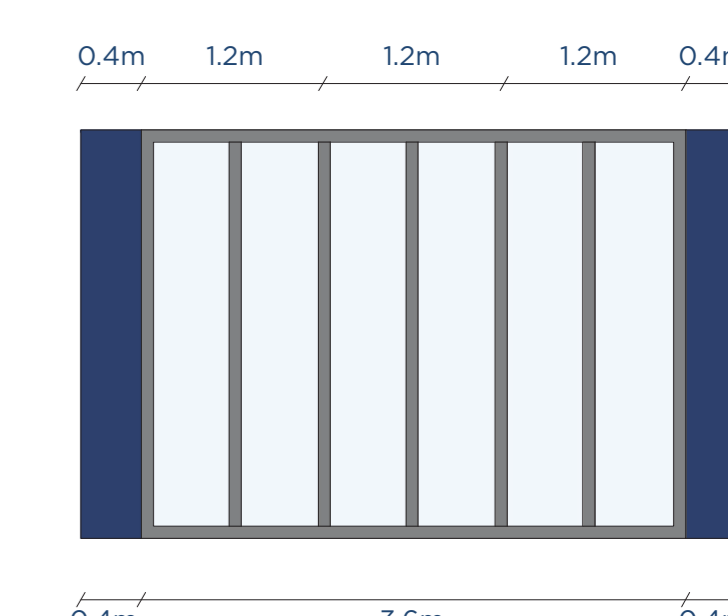
Embodied Energy
PERT: 2063,08 MJ
PERNT: 15075,88 MJ



COMPOSIZIONE C:
Combinazione T1+T2+T3

Embodied Carbon
GWP: 911,89 kgCO₂e

Embodied Energy
PERT: 2322,91 MJ
PERNT: 14430,07 MJ



COMPOSIZIONE D:
Combinazione T3+T3+T3

Embodied Carbon
GWP: 1163,34 kgCO₂e

Embodied Energy
PERT: 1543,44 MJ
PERNT: 16367,52 MJ