

5

CURRENT STATE
| SECTIONS
1:100

photographic survey

the Tower from outside



EAST



NORTH



WEST



SOUTH

the Tower from inside



Archive: main entrance the number 11 on Via Ardigò will be the entrance to the Tower path



Archive: hall it will be the first step, the starting of the Tower path



Archive: stairwell entrance this stairs will be used to reach the first level of the Tower



Archive: lower ground level entrance it is the first accessible space of the Tower, not easily accessible due to a double stairs



Lower: ground level inside it is the first accessible space of the Tower, not easily connected to the others



Lower: ground level ceiling as the others, also the ceiling of the ground level is a masonry vault



Archive: roof connection to the Tower, recognizable / association due to the weak connection between Tower and Archive



Archive: lower 1st level entrance the stairs obtained in the masonry of the Tower to reach its 1st level



Archive: Lower 1st level window it's the only light and air source of this space, on the North facade



Archive: Lower 1st level space vaulted space of the 1st level, with the steel ladder on the South side



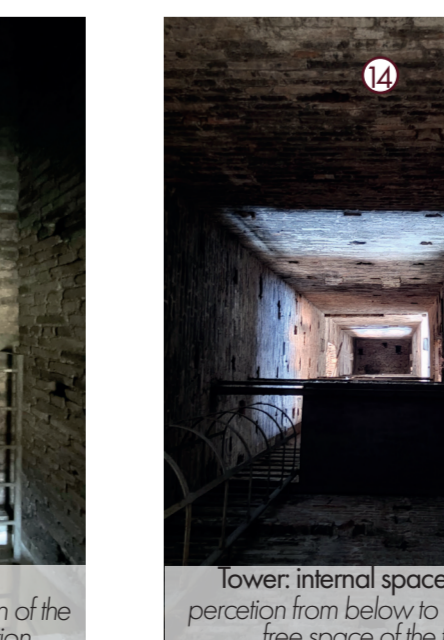
Archive: Lower 1st level ladder "main" ladder that currently connects the 1st level to the second one



Lower: 1st level slab section alternating layers of wood masonry and steel for a 50cm thickness



Lower: 2nd level inside perception from below to above of the double ladder organization



Lower: internal space | above perception from below to above of the free space of the tower



Lower: internal hole an example of the Tower holes seen from the inside



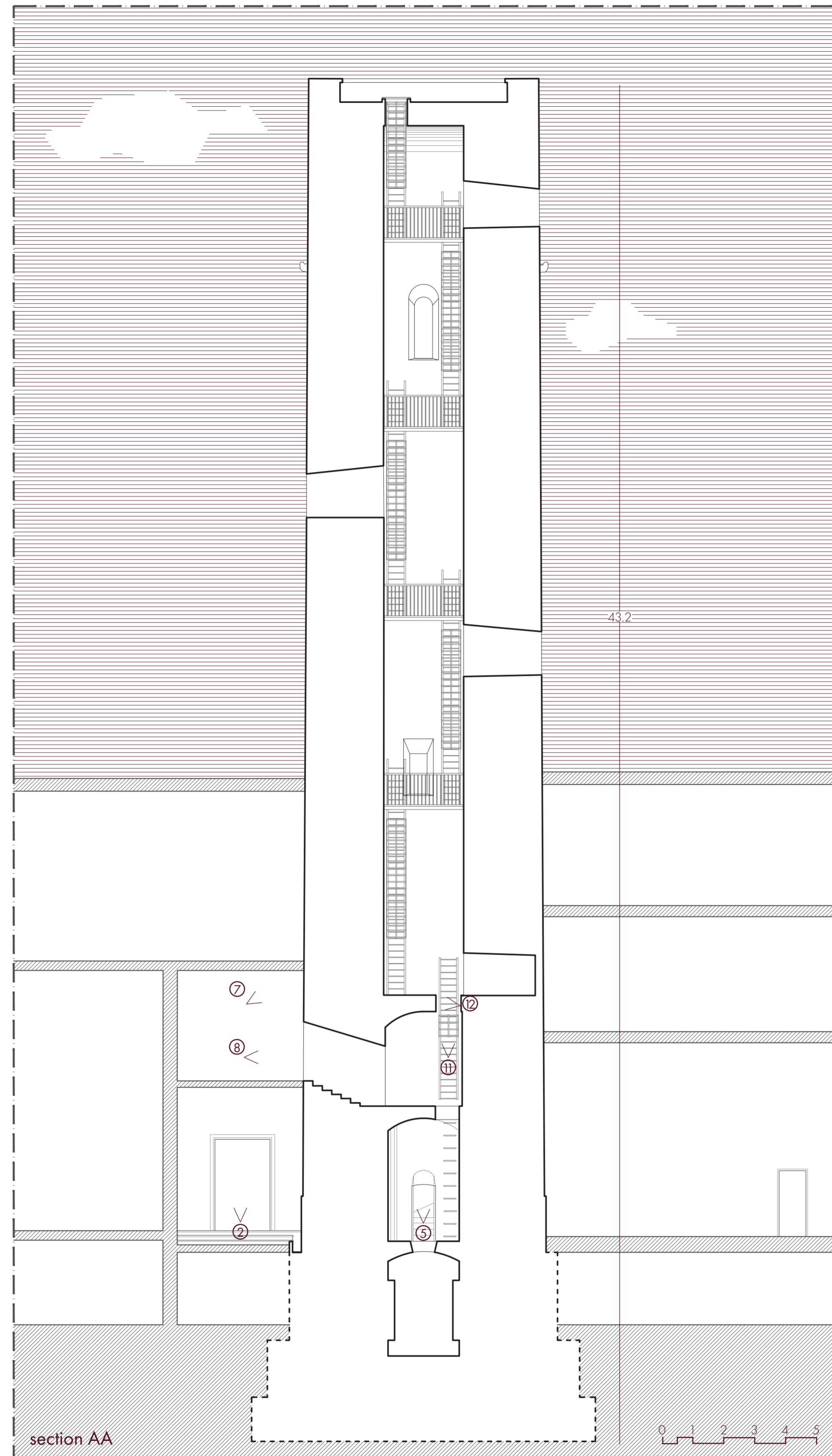
Lower: internal space | below perception from below to above of the free space of the tower



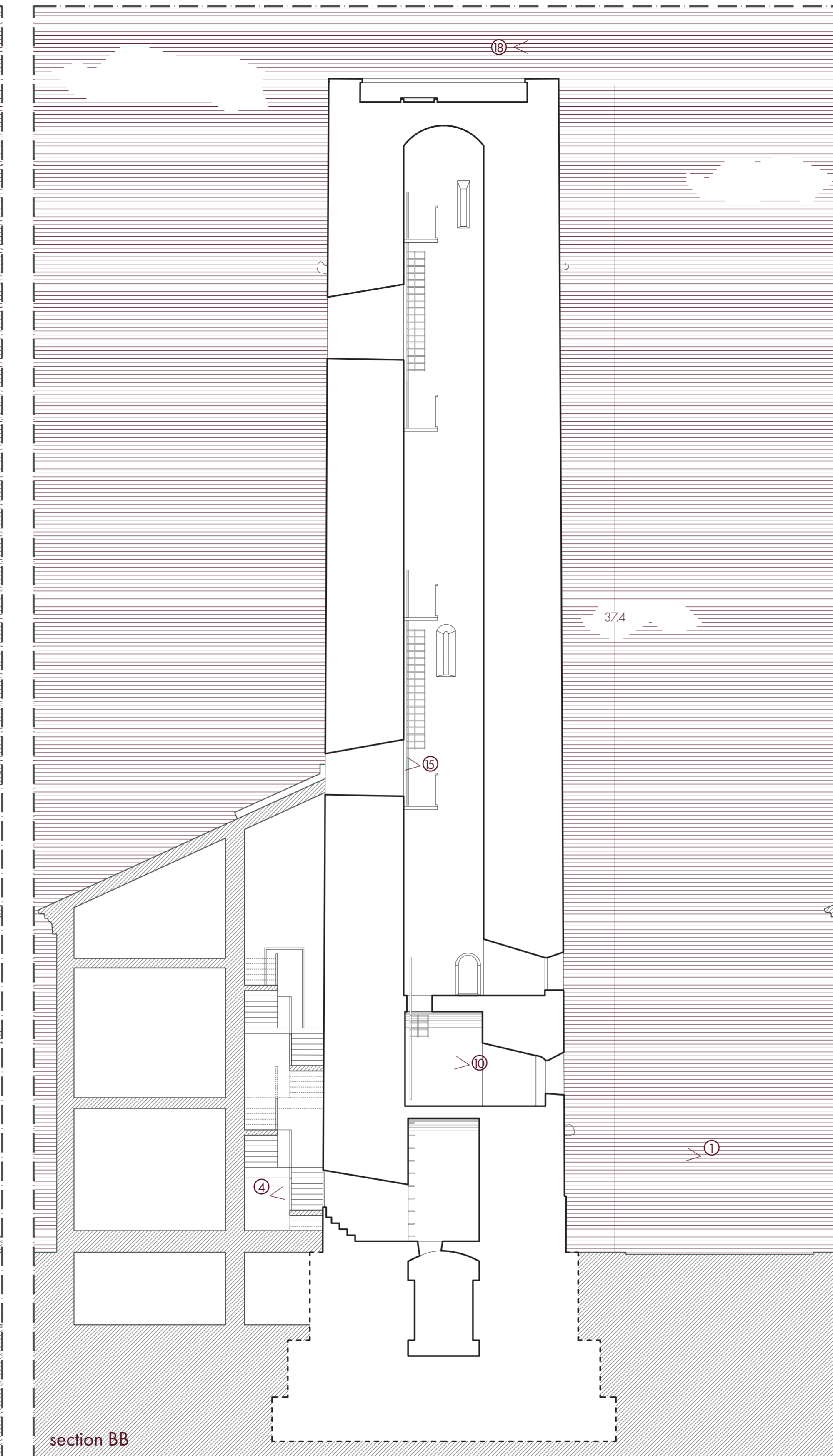
Lower: terrace orthographic of the terrace, that shows the trap door currently present



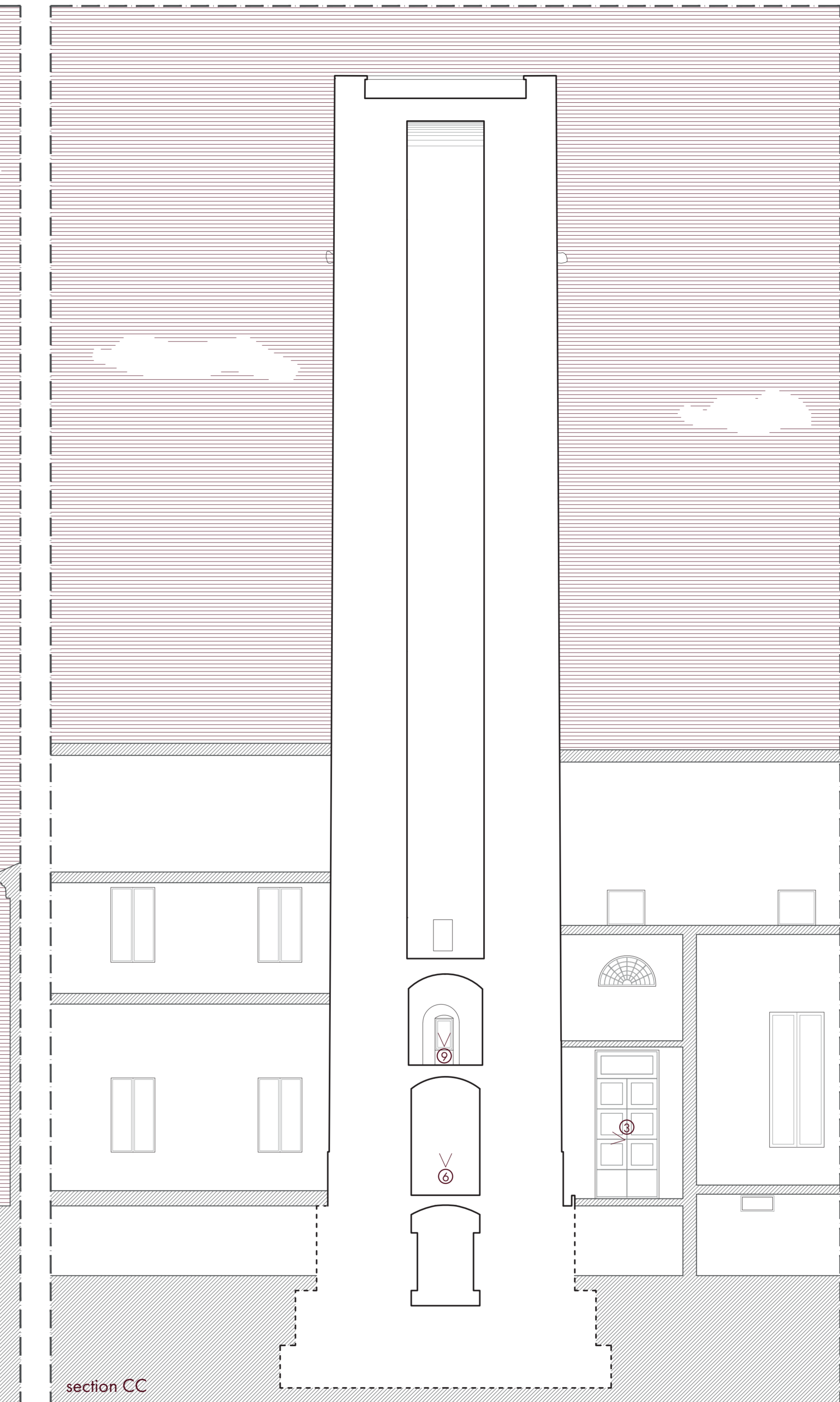
Lower: panoramic view example of the panoramic view that will be visible from the panoramic terrace



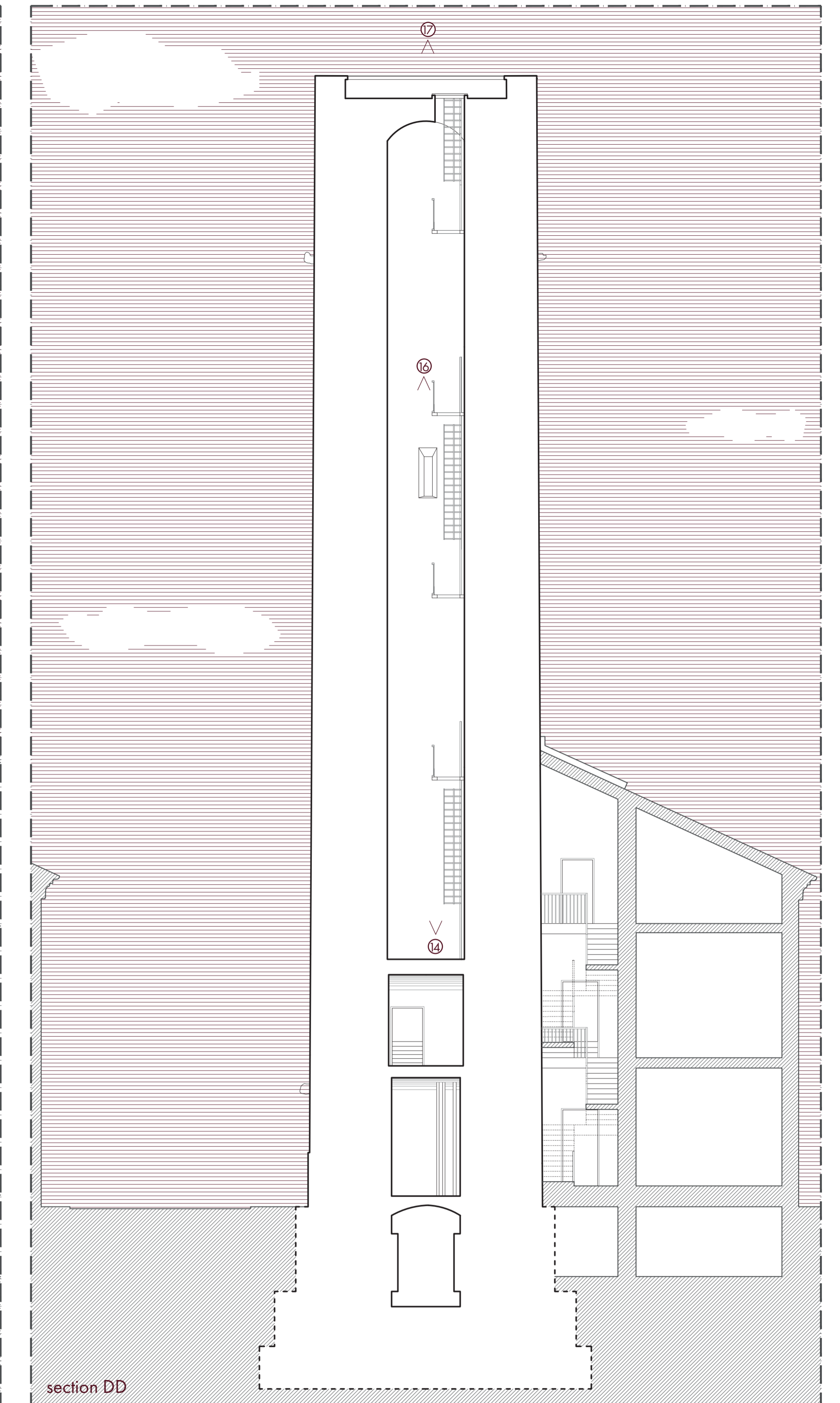
section AA



section BB



section CC



section DD