

# A DETACHED WALL

## CRITICAL DEVICE COVERING THE RETAINING WALLS

WHEN DARKNESS BECOMES A FLOW

*A wall that becomes a handrail.*

Looking towards the street, one can see all the grandeur of the wall that divides past and present.

*Darkness is the absence of everything. Presence and movement cannot be distinguished. Darkness is uncertainty of everything.*

If you get closer, however, you notice that it inexplicably does not touch the ground, it is as if suspended.

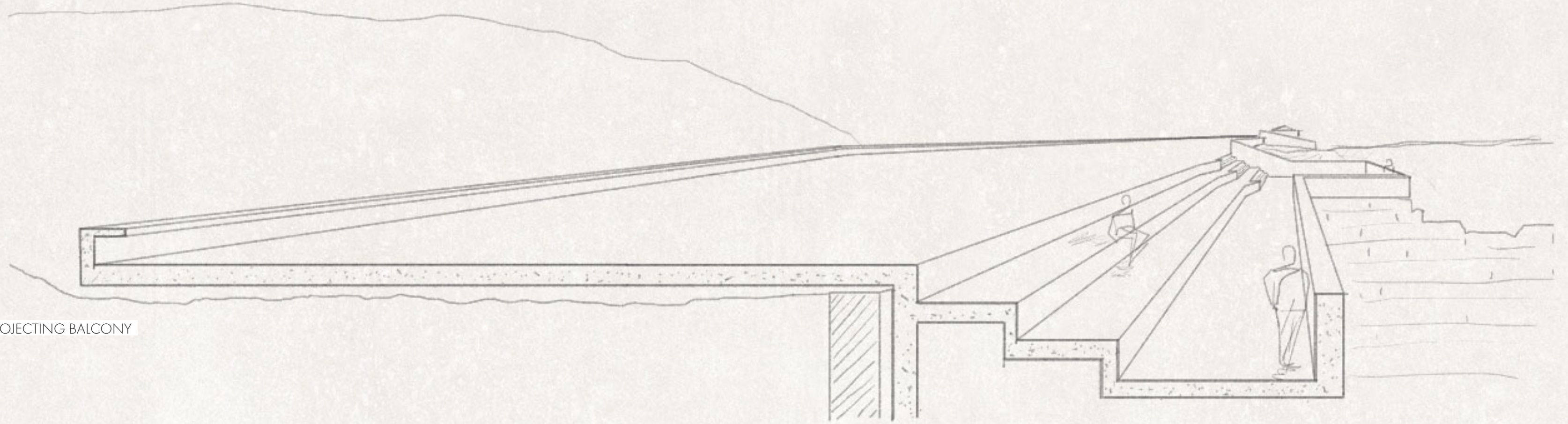
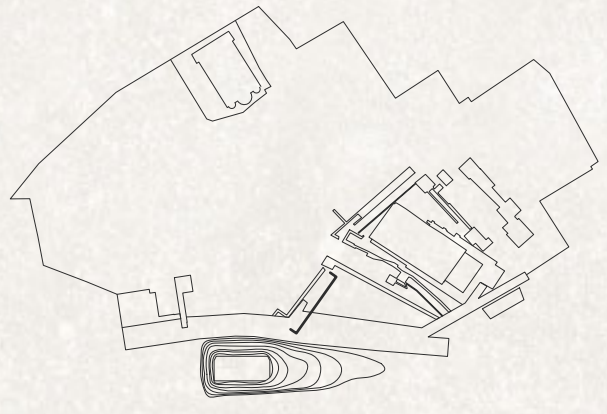
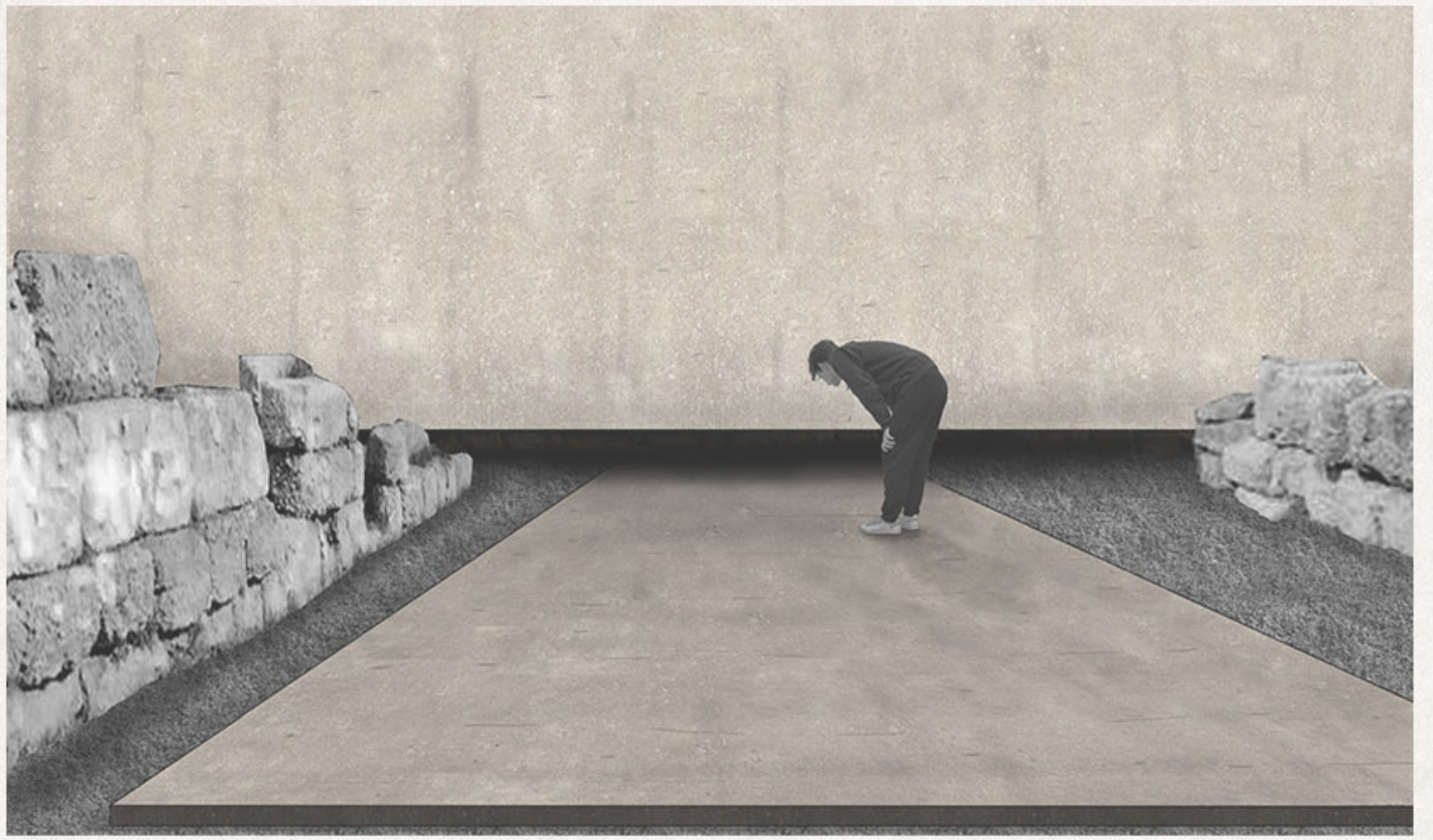
*The road, however, cannot be stopped. It is against its nature.*

And the walkway continues under it, as if to indicate that the archaeological park and the remains do not end with a wall.

*The flow will always try to overcome every impediment. But what if the impediment is the present itself? How can it still lead there towards its only destination? There is a wall that is pierced by an invisible force.*

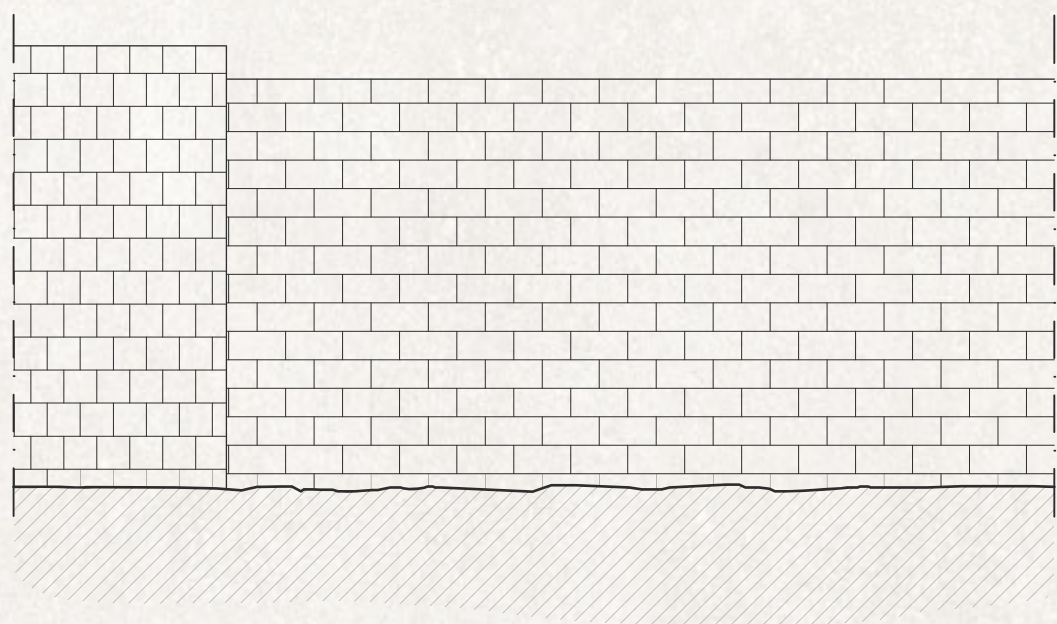
That shadowy space imposes questions and allows the continuous flow of history.

*Before the eyes there is only darkness and a path that remains imagination.*

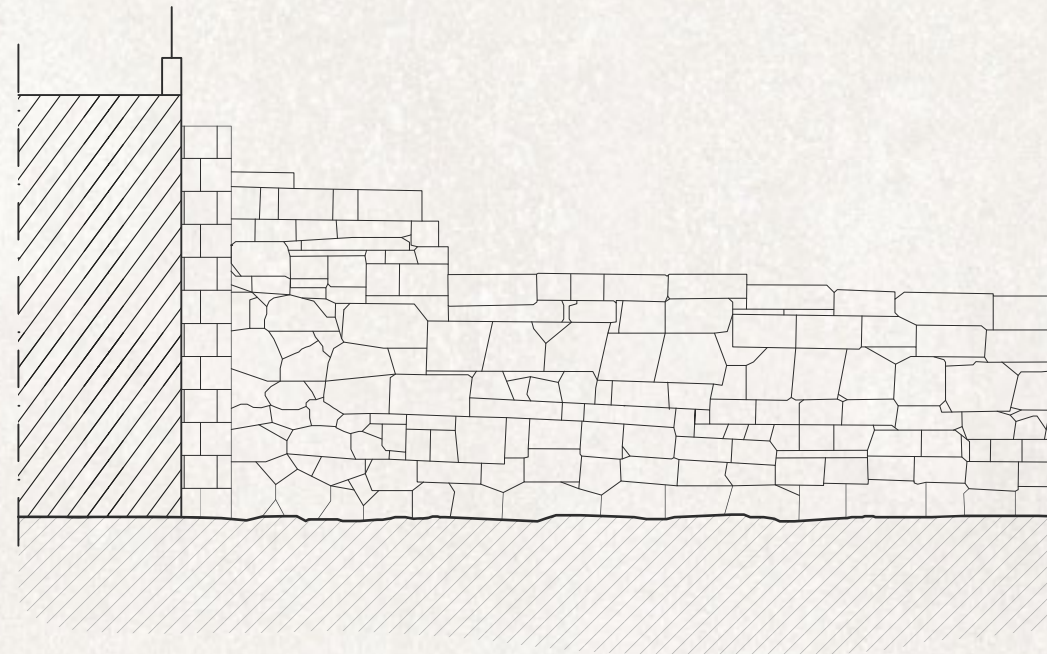


STUDY DRAWING OF THE STEPPED ELEMENT AND THE PROJECTING BALCONY

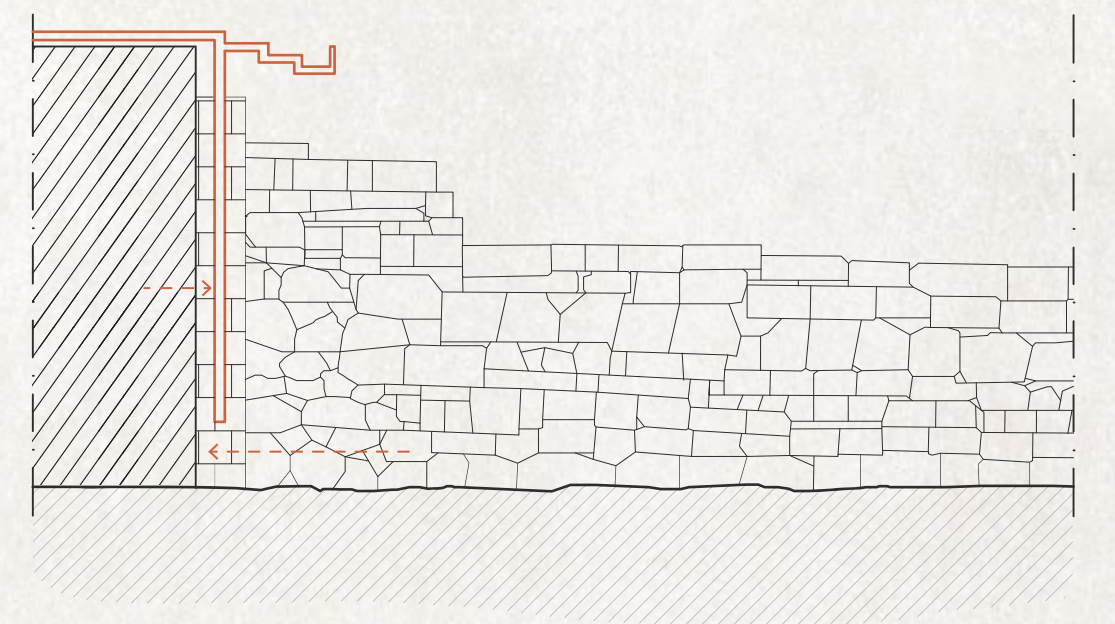
PROJECT CHRONOLOGY DIAGRAMS



PHASE 0  
\_presence of high walls and archaeological remains in ancient times



PHASE 1  
\_retaining walls resulting from the first phase of excavations in the 19th century. These walls appear as historical stone forgeries that, although visibly modern, were built with similar material to the remains



PHASE 2  
\_the project remains respectful of both the remains and the 19th century intervention, while declaring its modernity and letting the textures of the past flow within it

SECTION 1:100

