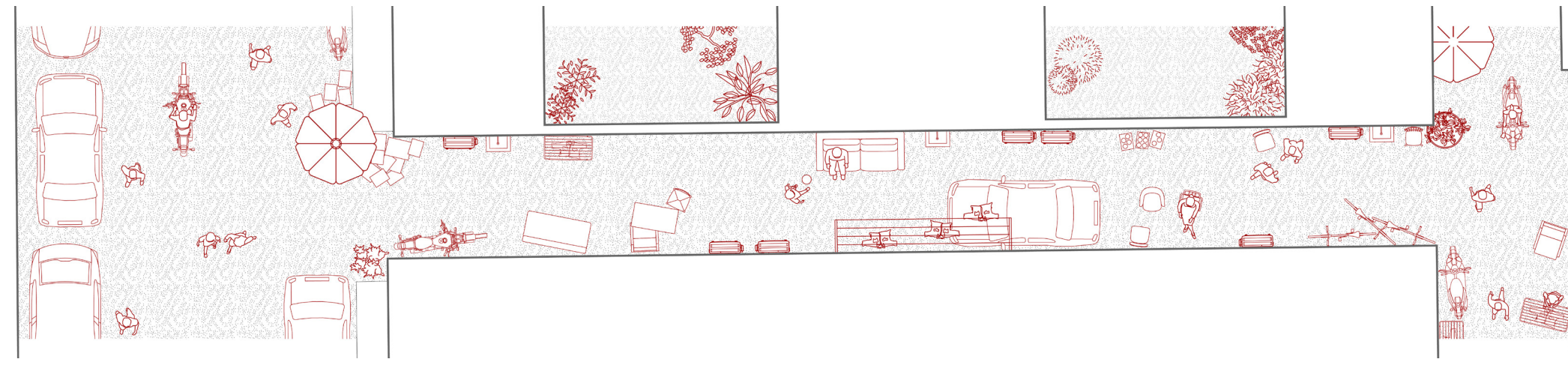


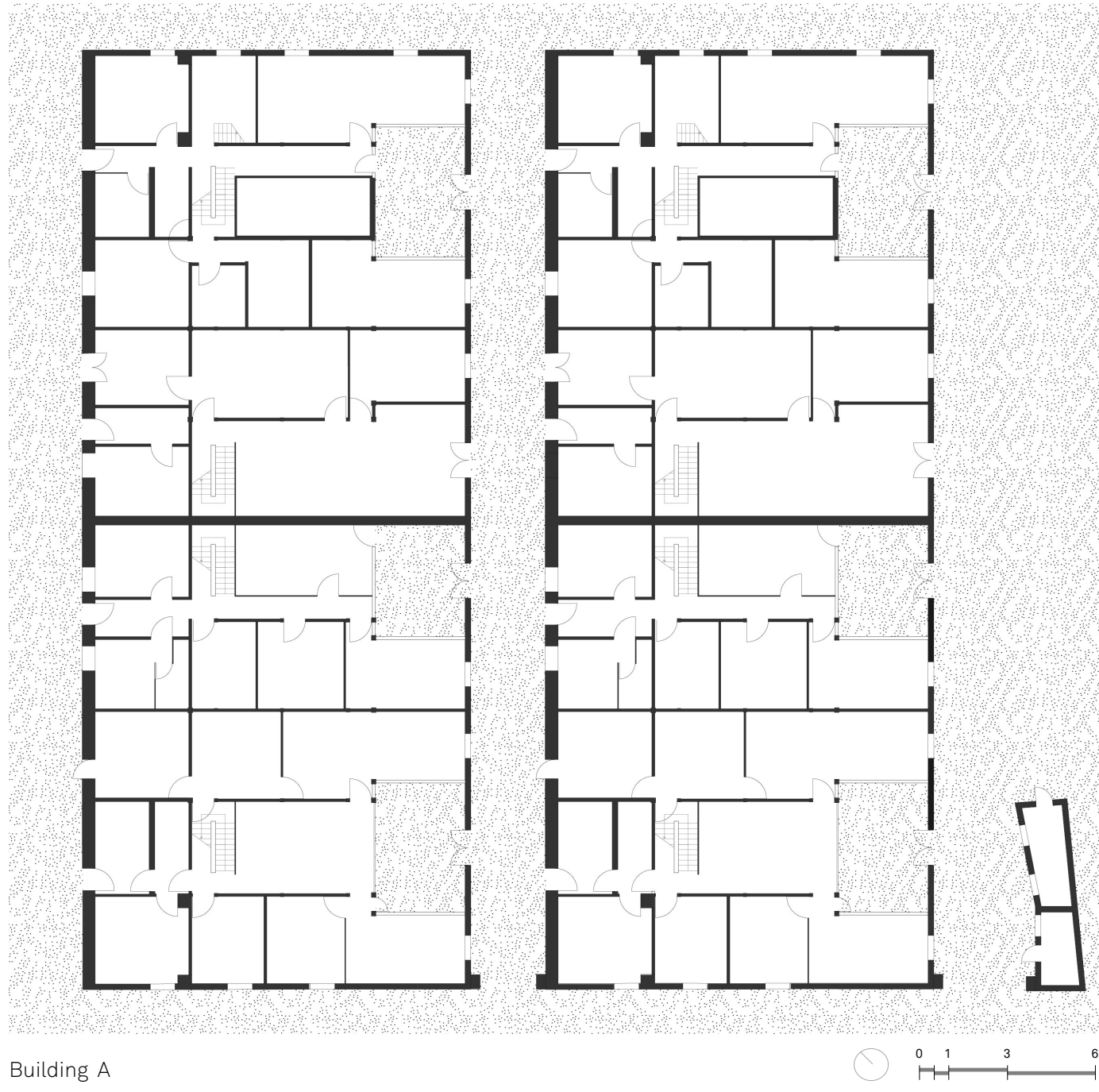
1. THE LIFE IN THE ALLEYWAY



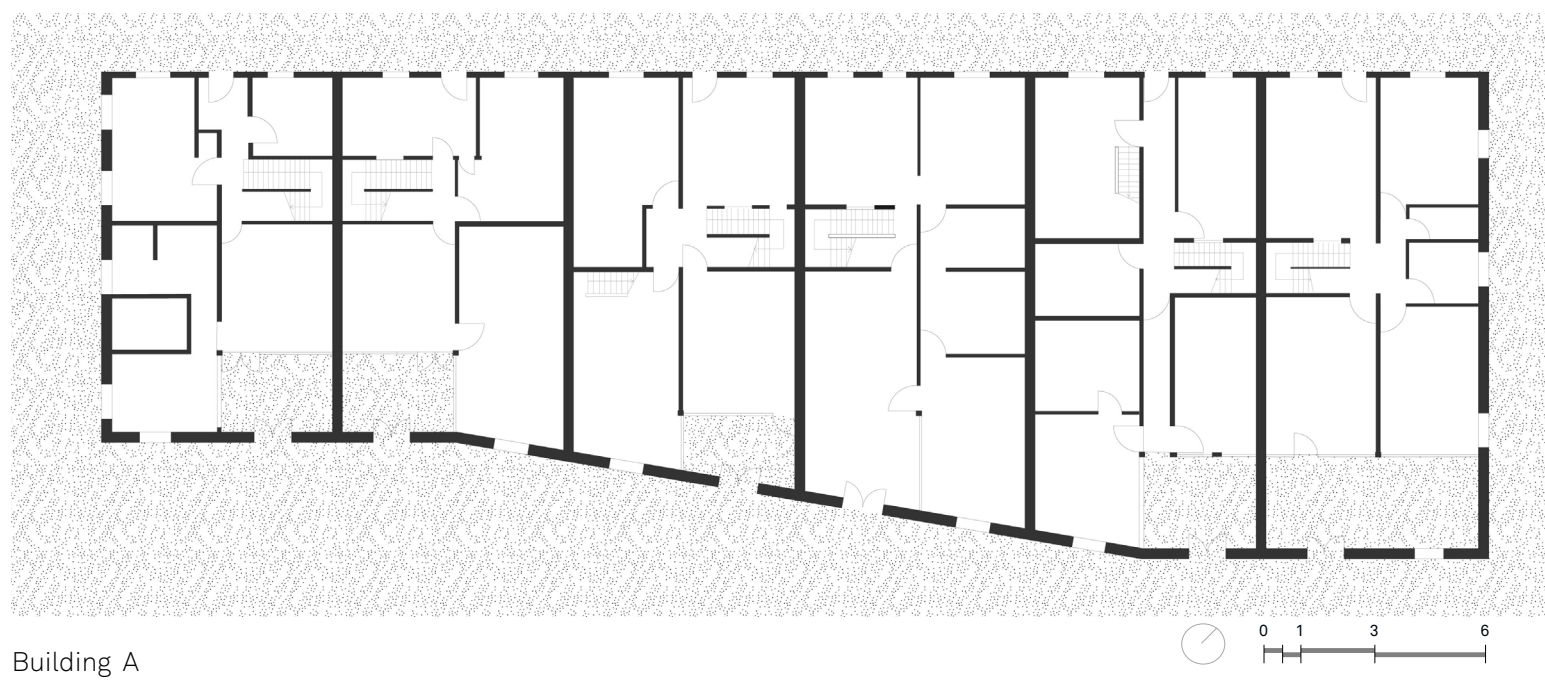
One of the main features of the Lilong is the life within its alleyways. They represent these neighborhoods' culture. Due to the lack of interior spaces, people base their everyday life in the alleys, as they are used as shared spaces. In fact, it is still possible to see people chatting outside the door, playing, dancing, or doing the laundry.



2. TYPOLOGY REFERENCE CASES



Building A



Building A



4. ARCHITECTURE AND LIFESTYLE INTERPRETATION

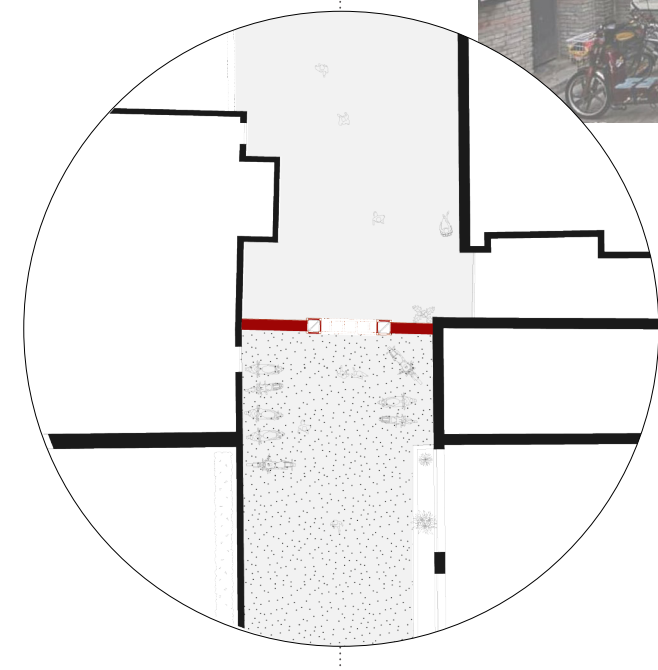


The urban context in which Zhangyuan Lilong is located is very different on its four sides. The plan and the sections show the contradictory urban scales that mainly characterize the northern and eastern side, and the southern and western one.

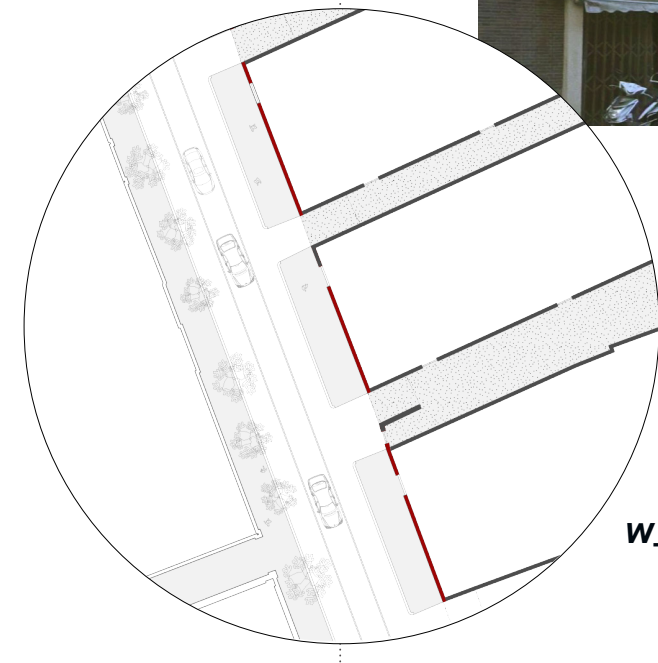
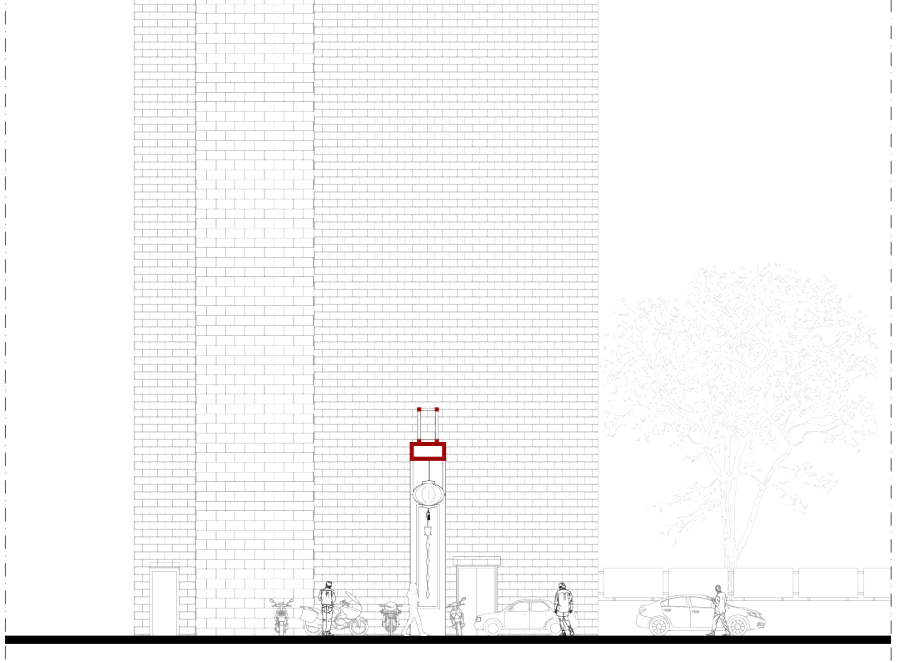
The first one, coloured in light blue corresponds to a mainly neighborhood-scaled reality, characterized by small streets with pedestrian pavements on the sides and small retailers. Instead, the second one shows its out-of-scale dimensioned reality, with wide crowded roads, tall skyscrapers, huge shopping malls.

neighborhood scale reality contemporary scale

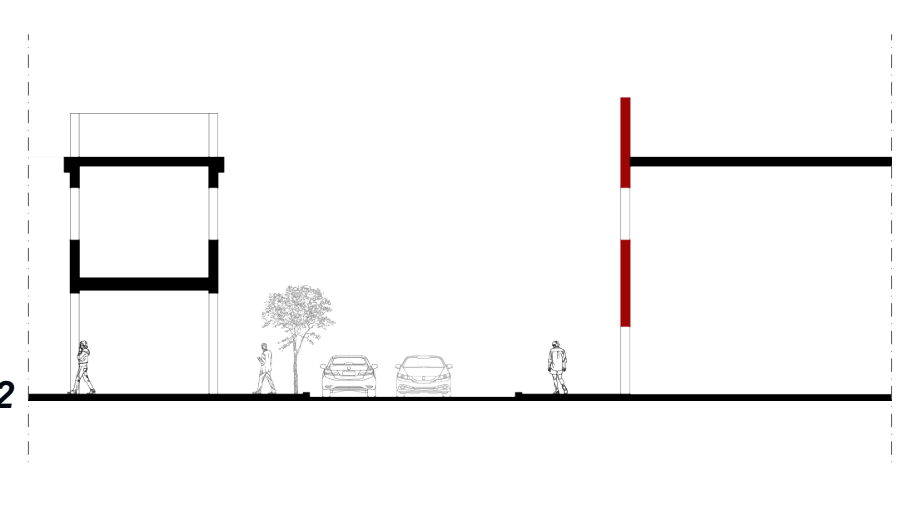
3. THE DIFFERENT APPEARANCES OF THE WALL



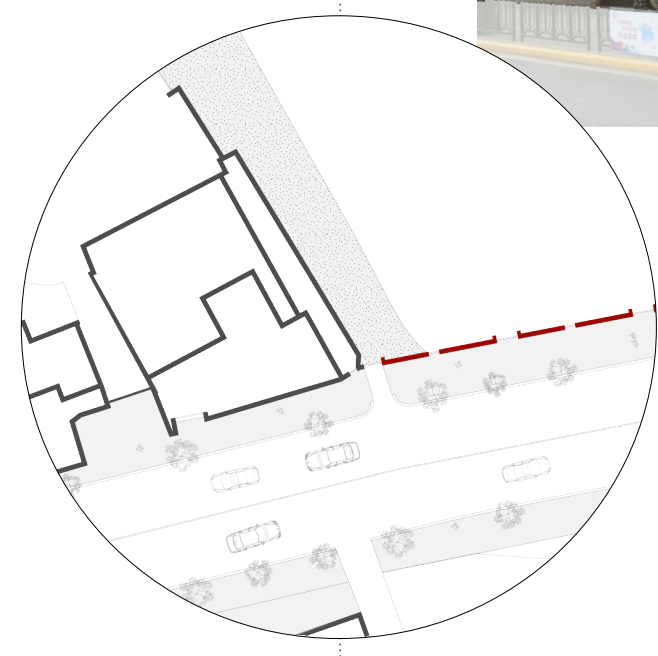
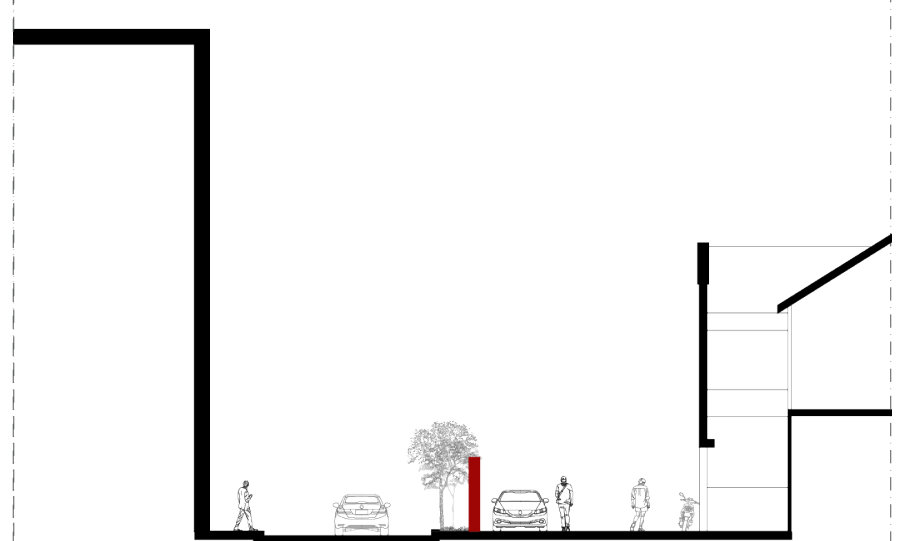
w_1



w_2



w_3



w_4



The wall is one of the identity elements of Zhangyuan, but it comes in different shapes. The first zoom shows the gate entrance to the Lilong; the second one shows the Shikumen's facades along the outer public retail belt; the third zoom exhibits the part of the wall that separates the Lilong from the skyscrapers on its edge; instead, in the last example the wall consists of a fake reproduction of the original Shikumen facades that are now demolished.