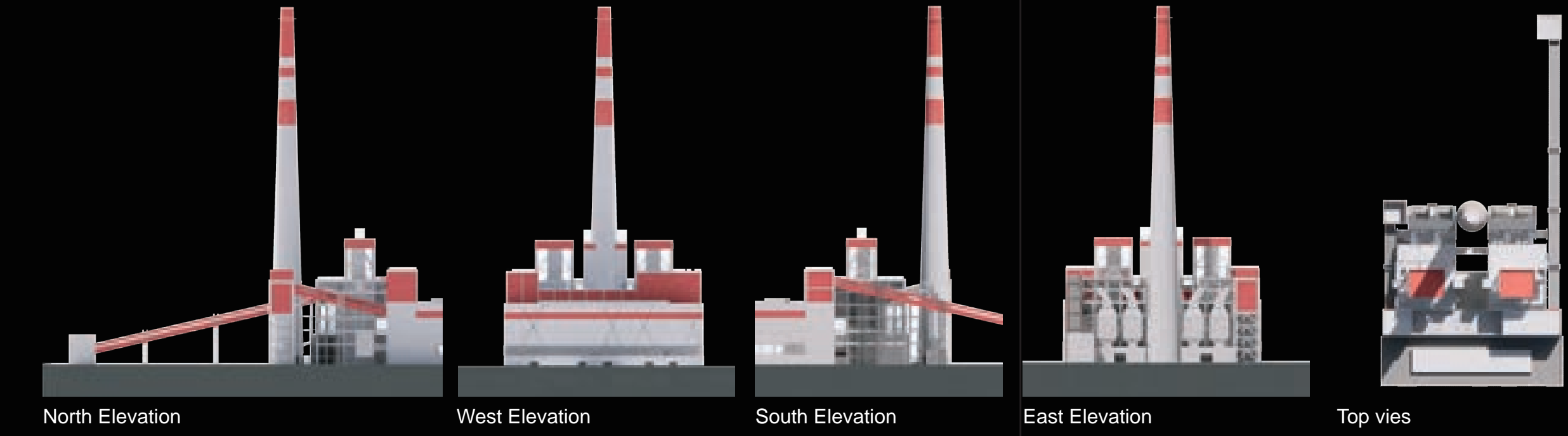


3. Analysis of Movie_Battleship Potemkin

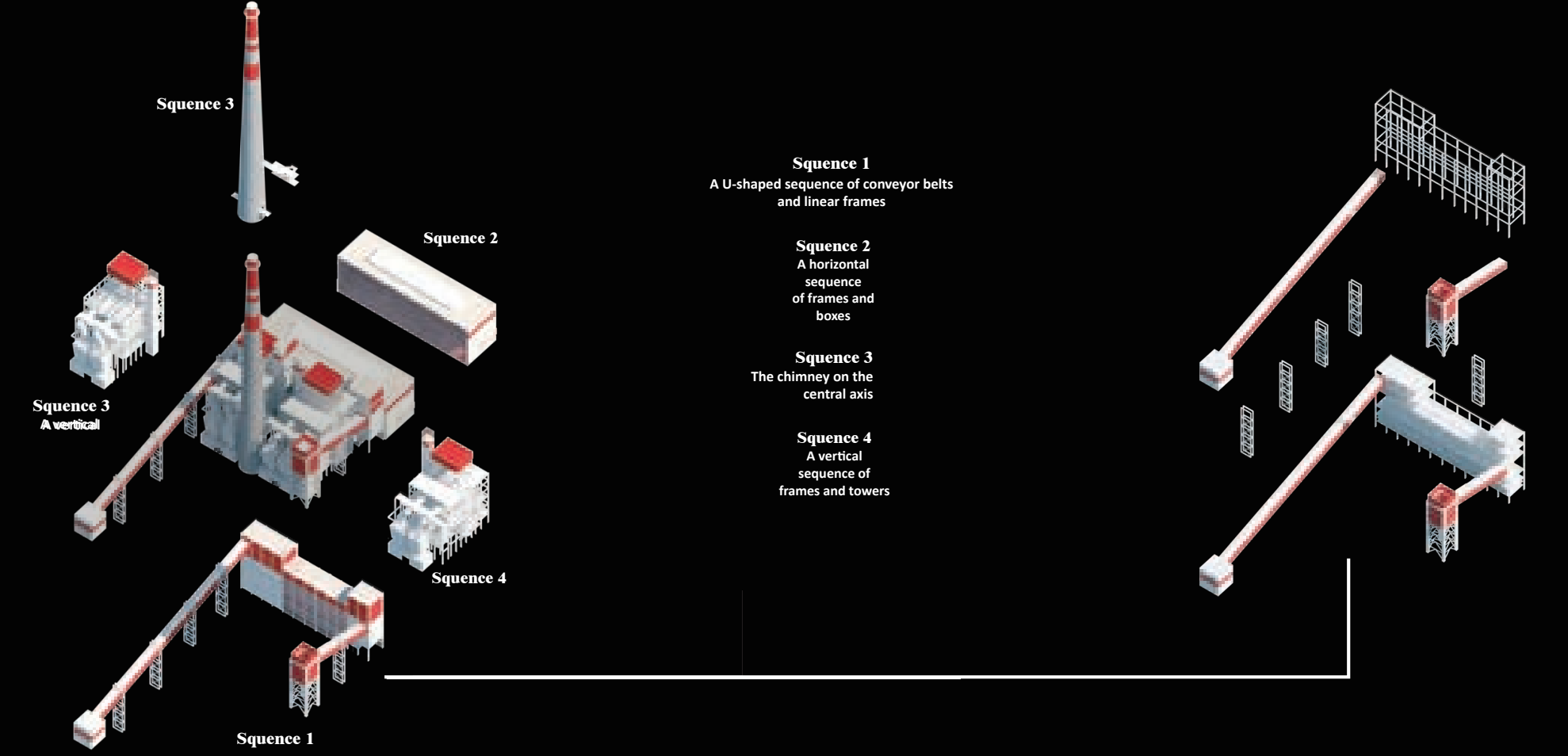
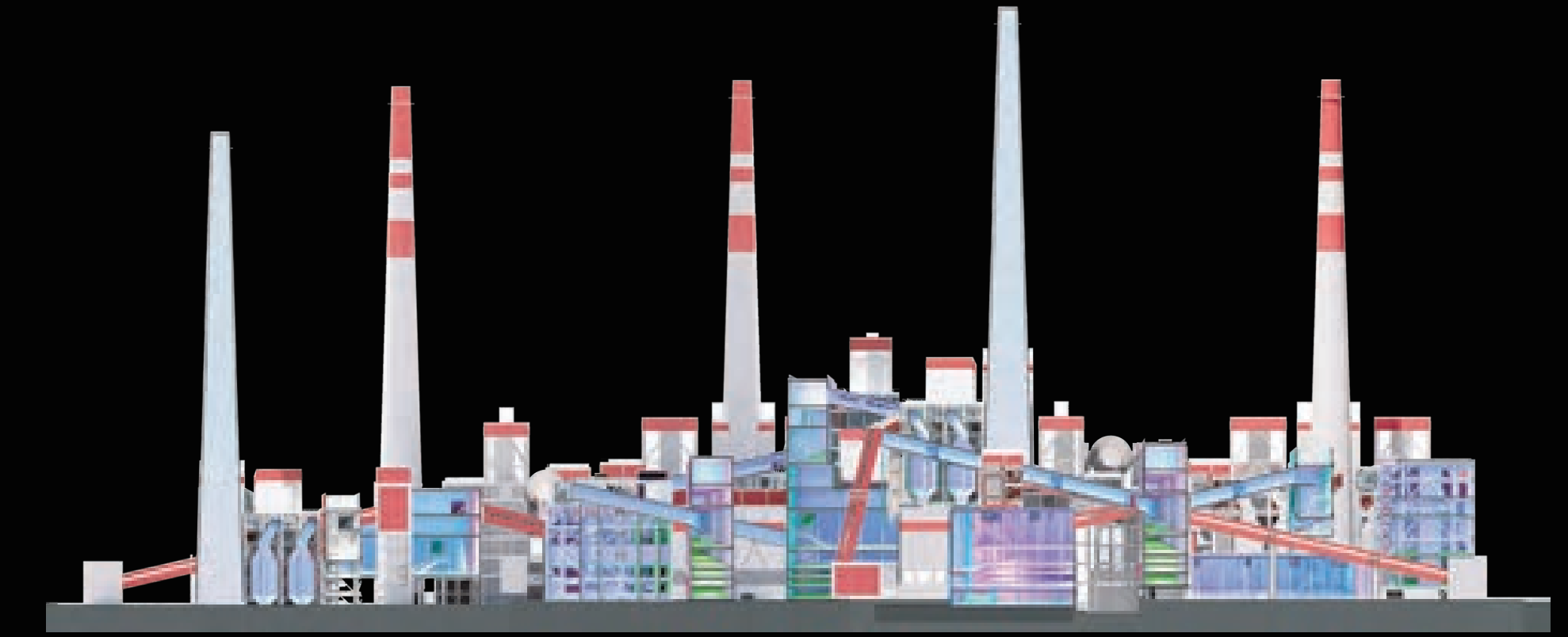
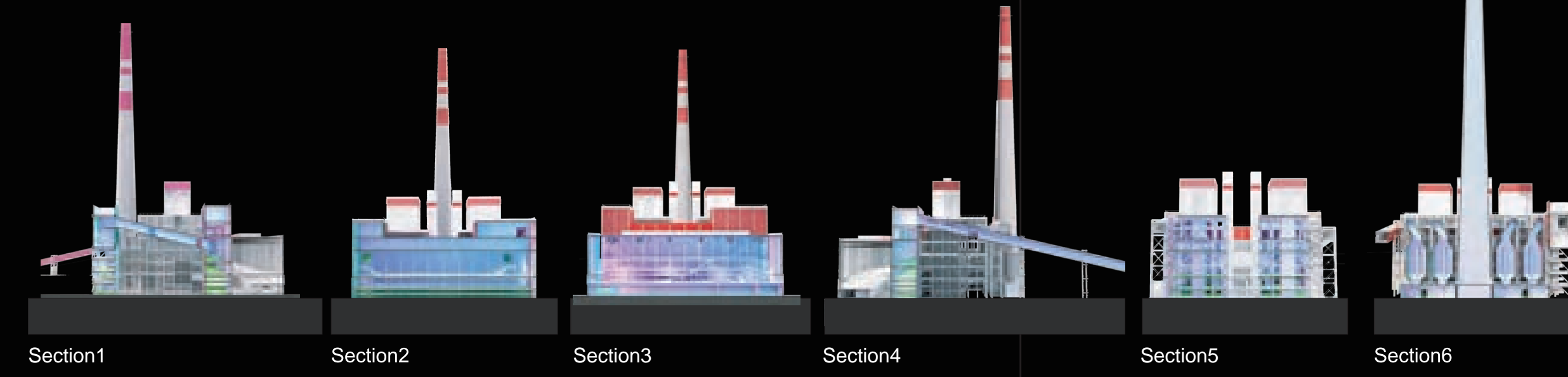


EISENSTEIN
Battleship Potemkin
 Close-ups
 shots alternate
 with Long-range
 perspective shot

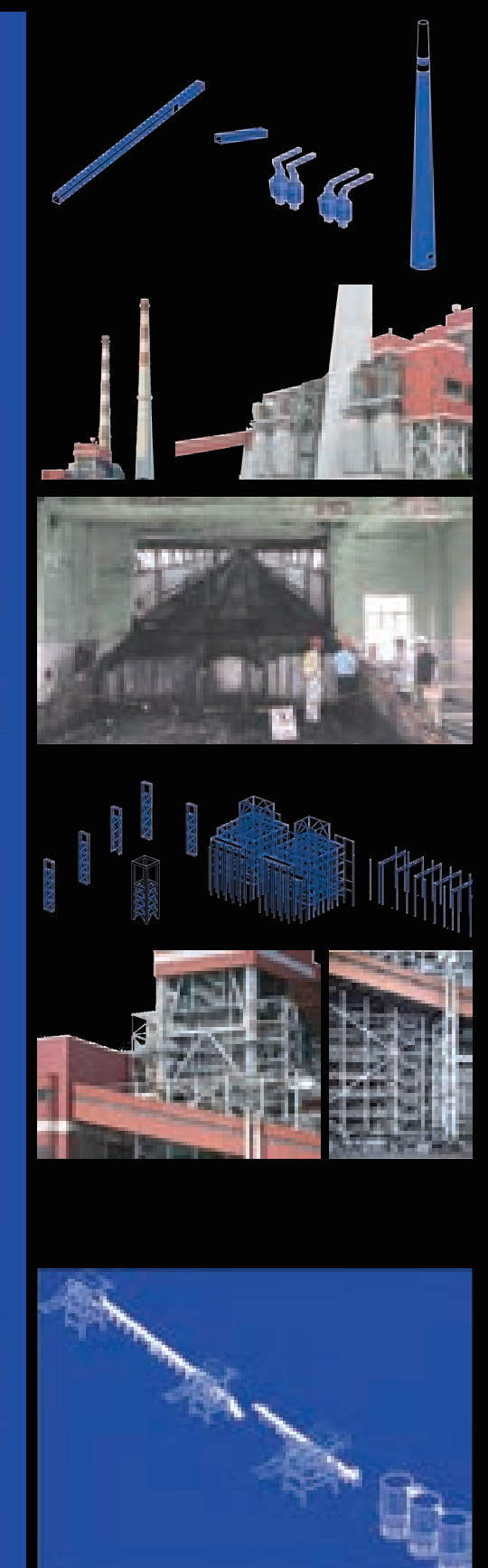
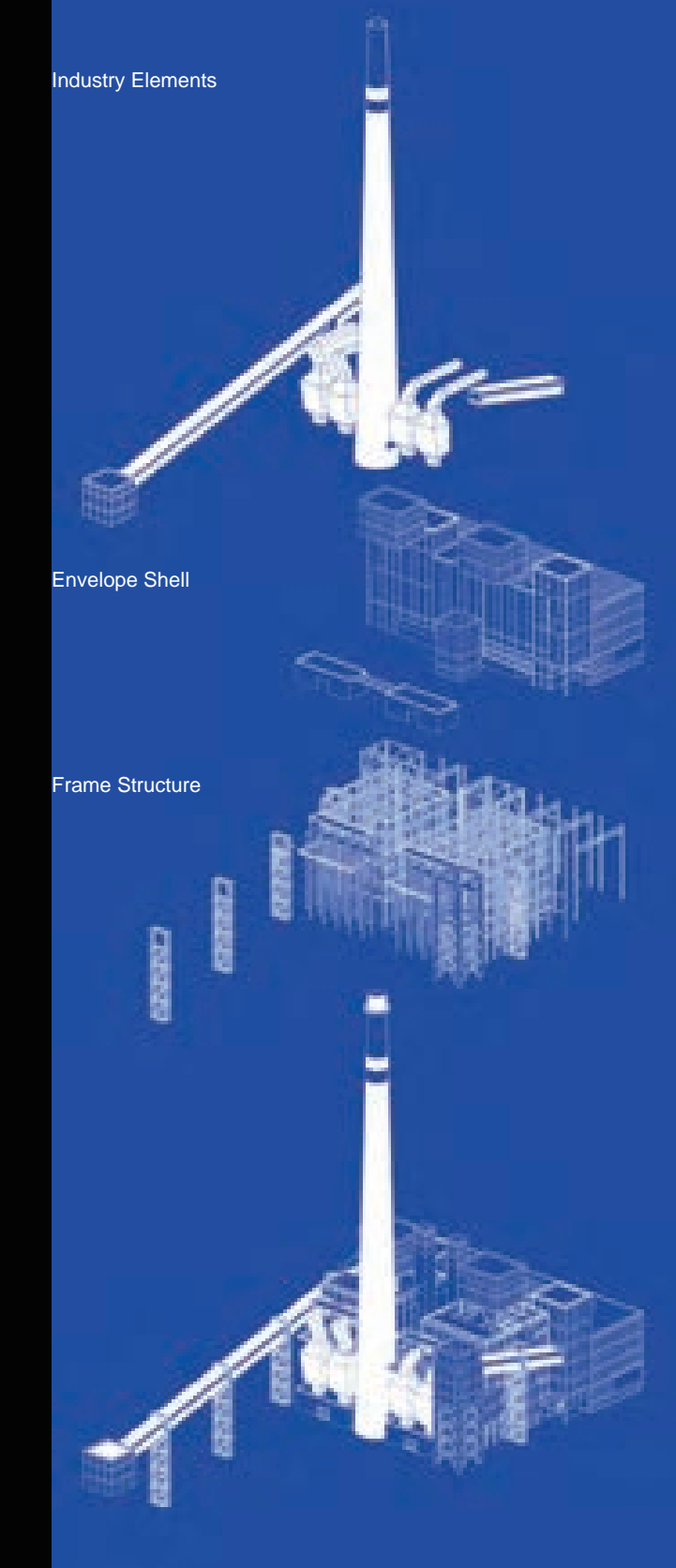
PART TWO: FINAL THESIS
 From Theory to Practice 5.2

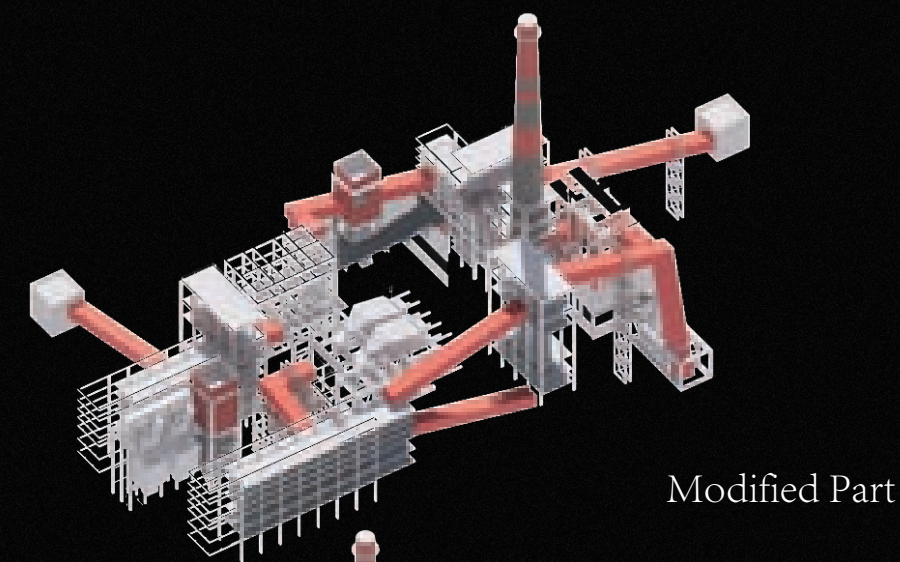
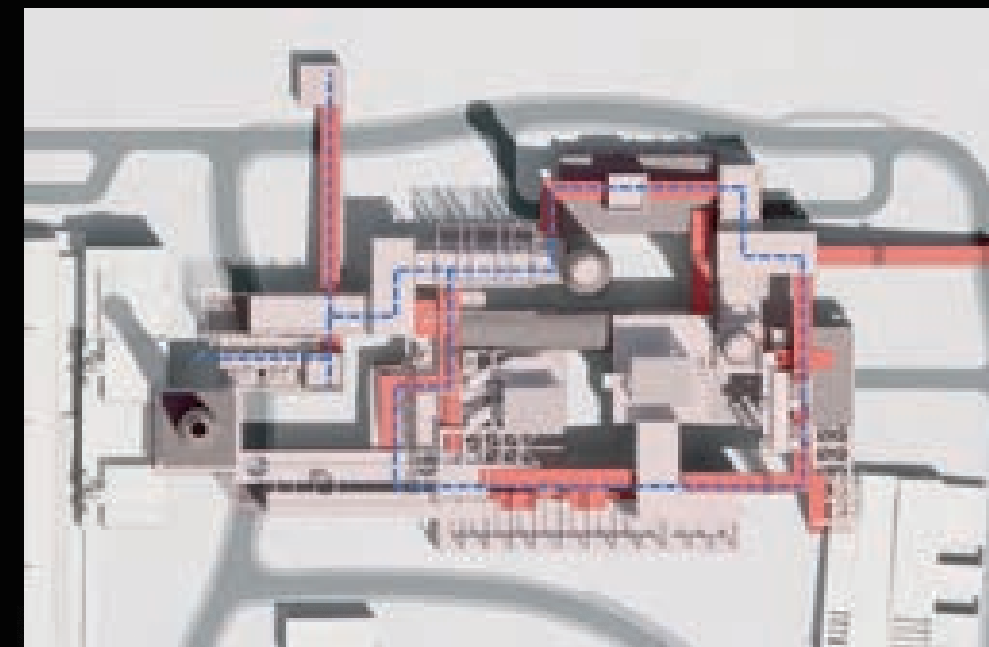


PART TWO: FINAL THESIS
 From Theory to Practice 5.2



ARCHITECTURE ELEMENTS



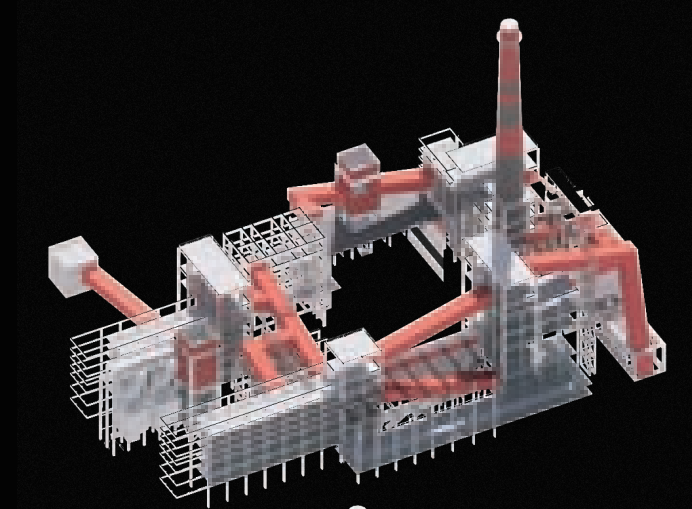


Modified Part



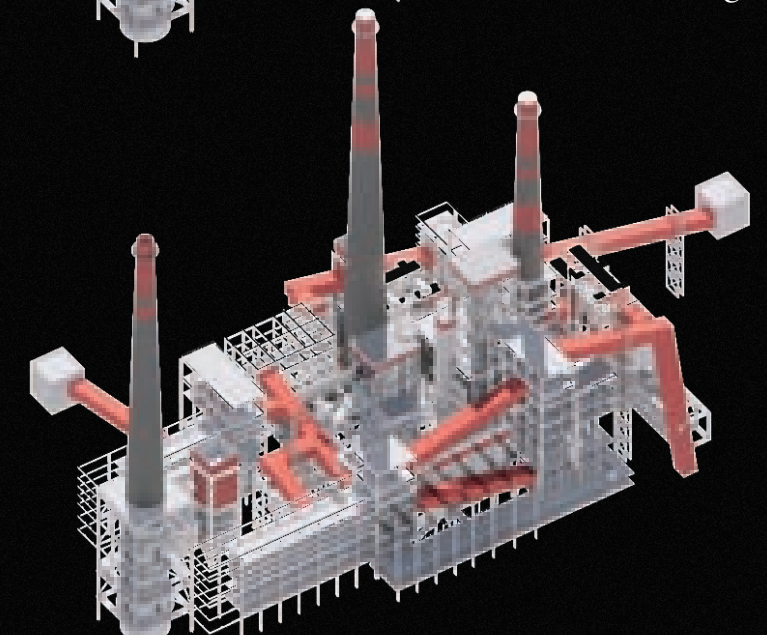
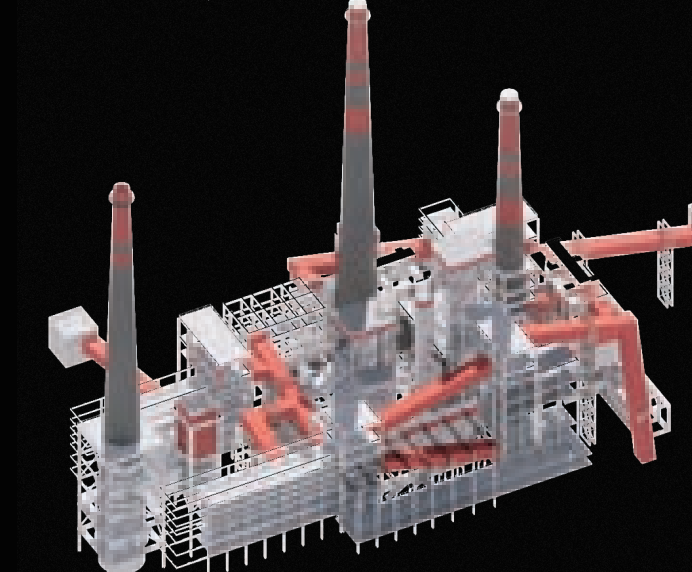
- EXHIBITION UNITS
- PROJECTION/SHOWING
- FILIM EDITING OFFICE
- PRODUCER ROLLER(REOCRDING)
- MOVIE EDITING WORKSHOP
- RECORDED PEOPLE----PRODUCER
- LIVING FACILITY&V
- ERTICAL LANDSCALE
- SOME ONE TO BE RECORDED
- open thearter. vertical agriculture, resturant

LACK OF FUNCTION ANALYSIS CIRCULATION ANALYSIS



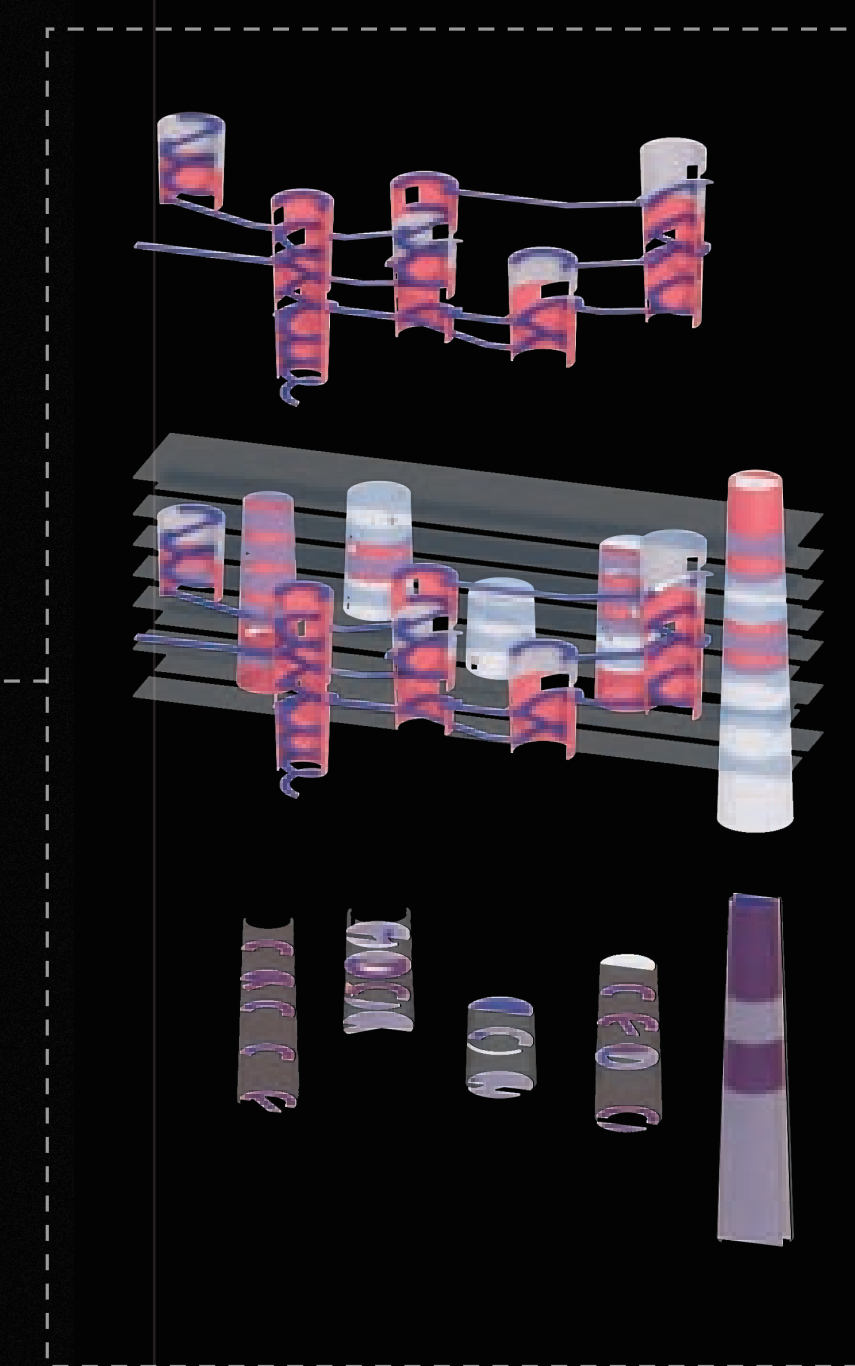
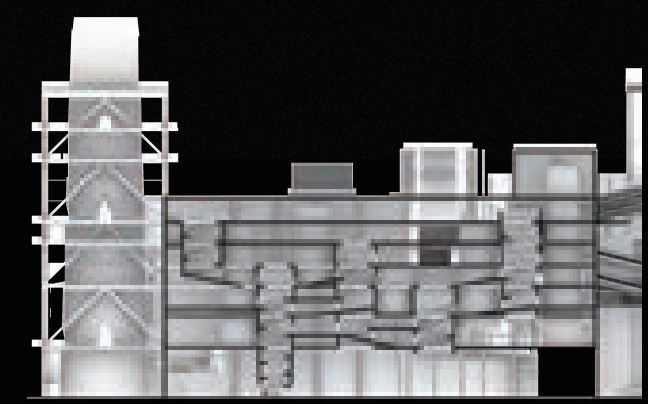
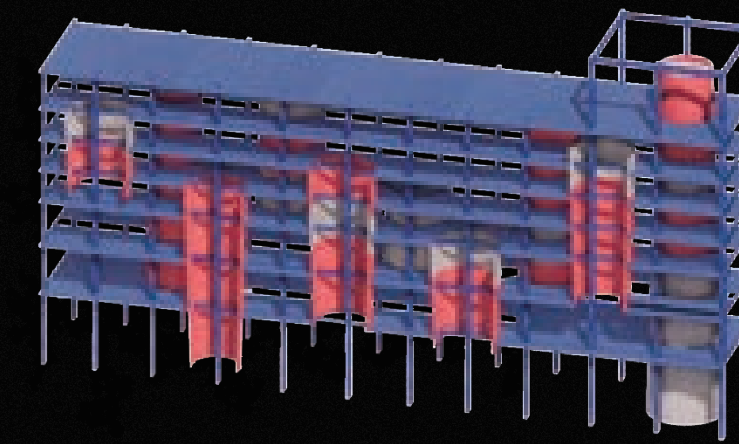
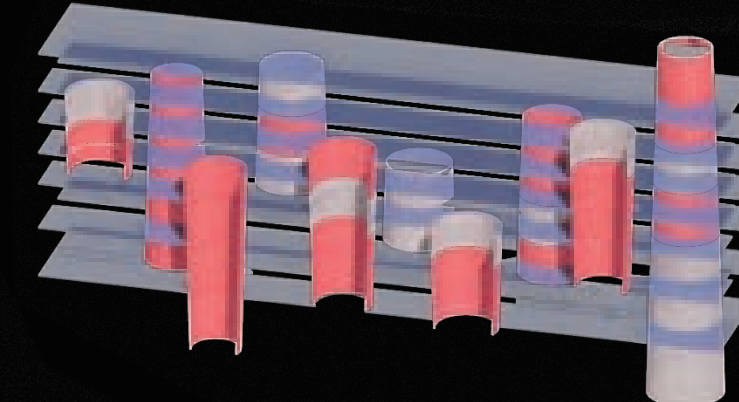
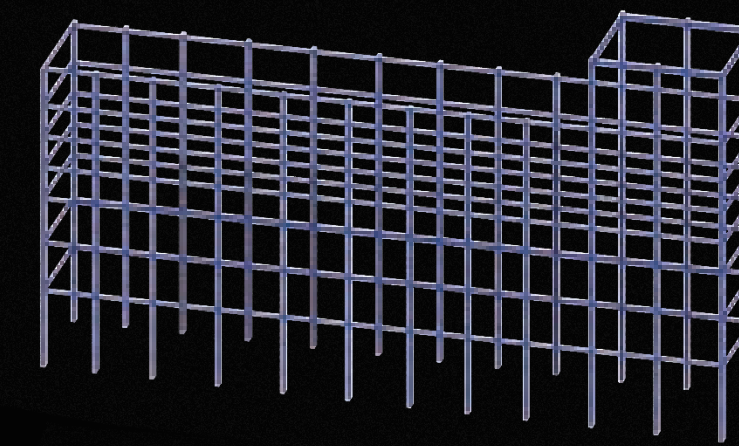
Original Part

Section part
cut along line to get the
imagination section





EISENSTEIN
Battleship Potemkin
 Close-ups
 shots alternate
 with Long-range
 perspective shot



Description
 两条线路
 流线连接方式
 中间是gap

