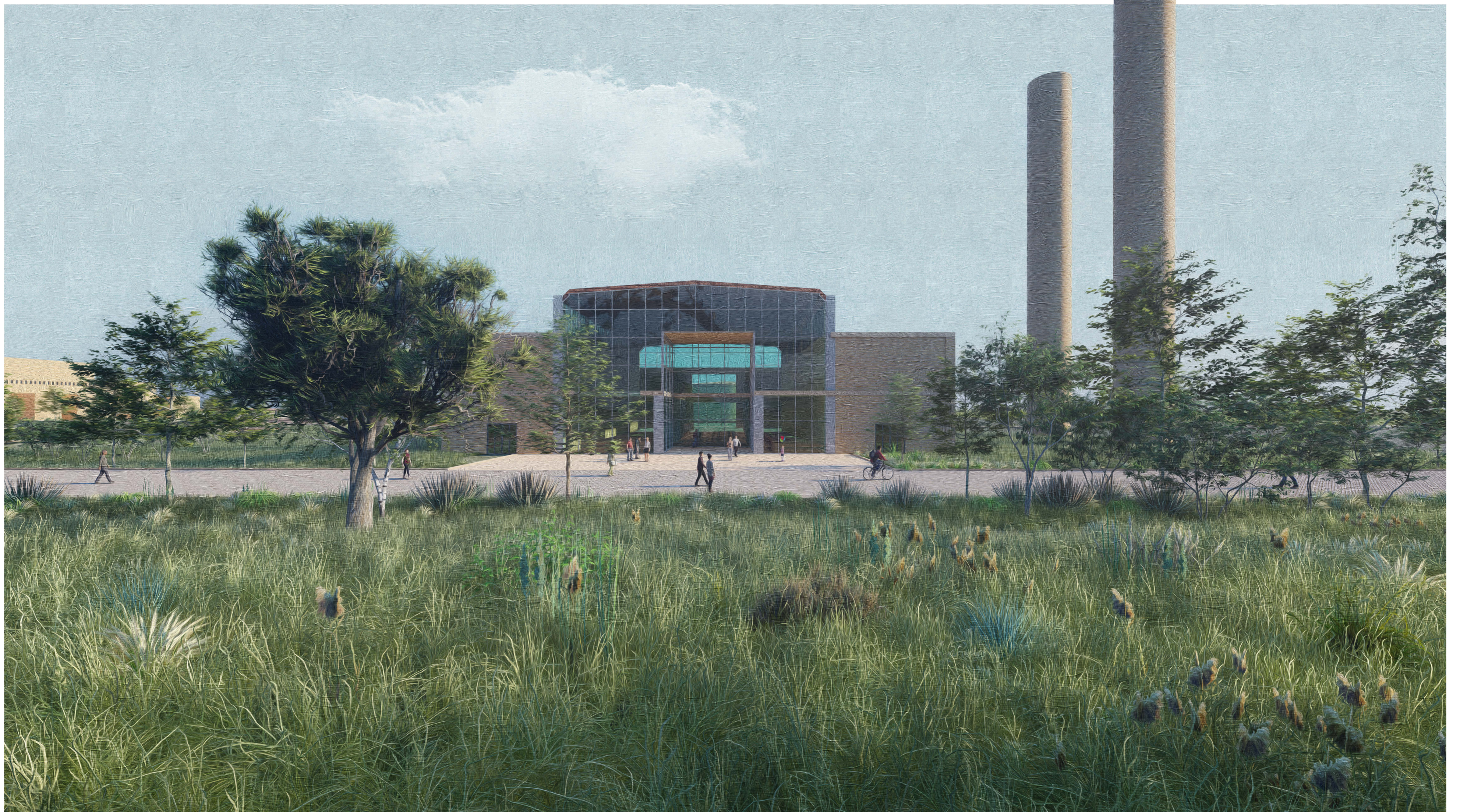
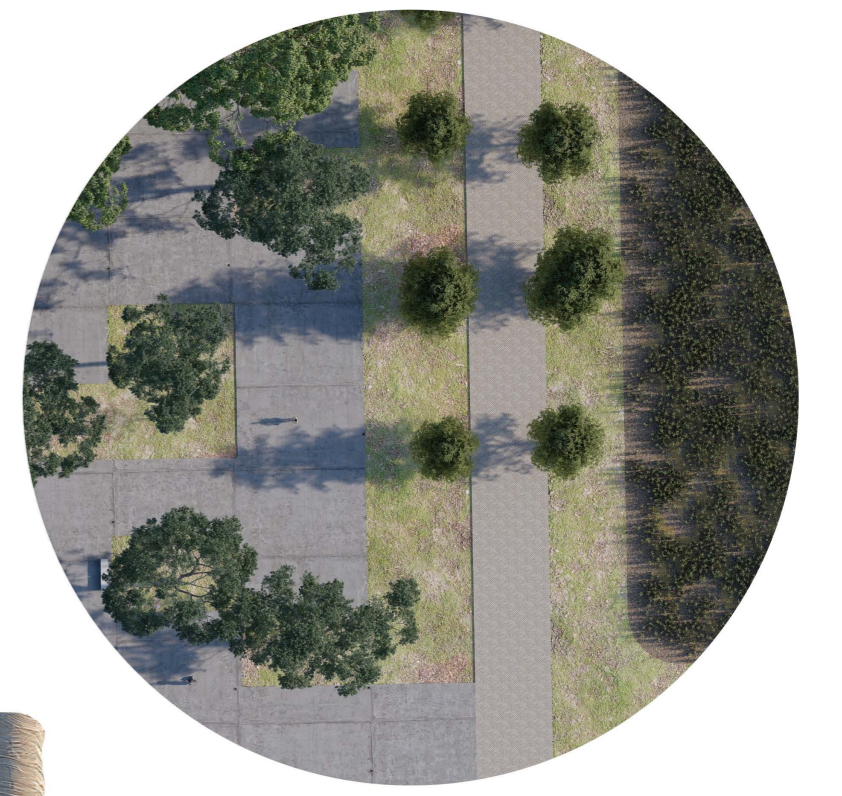


Mauro Staccioli, Tortoli, 1996

LAND ART AND SENSE OF PLACE

In Tortoli an important **museum of modern art** has been created which has the particularity that the **works are placed in open spaces**. One of the artists that creates land arts is **Mauro Staccioli**, his idea is to meet people where they live which leads him to create sculptures for urban places. His sculptures are "marks", **traces of a landscape**; he wants to **affect the people** who are usually found in a place and prompt them to **experience that place in a different way**.



Politecnico di Milano

School of Architecture, Urban Design and Construction Engineering
Msc. Sustainable Architecture and Landscape Design

WEAVING THE LANDSCAPE

A SYSTEMIC DESIGN APPROACH TOWARDS INTEGRATIVE RECLAMATION OF ARBATAX FORMER PAPER MILL

Author: Alan Minouei
Supervisor: Matteo Moti