

# UNDERSTANDING THE CITY

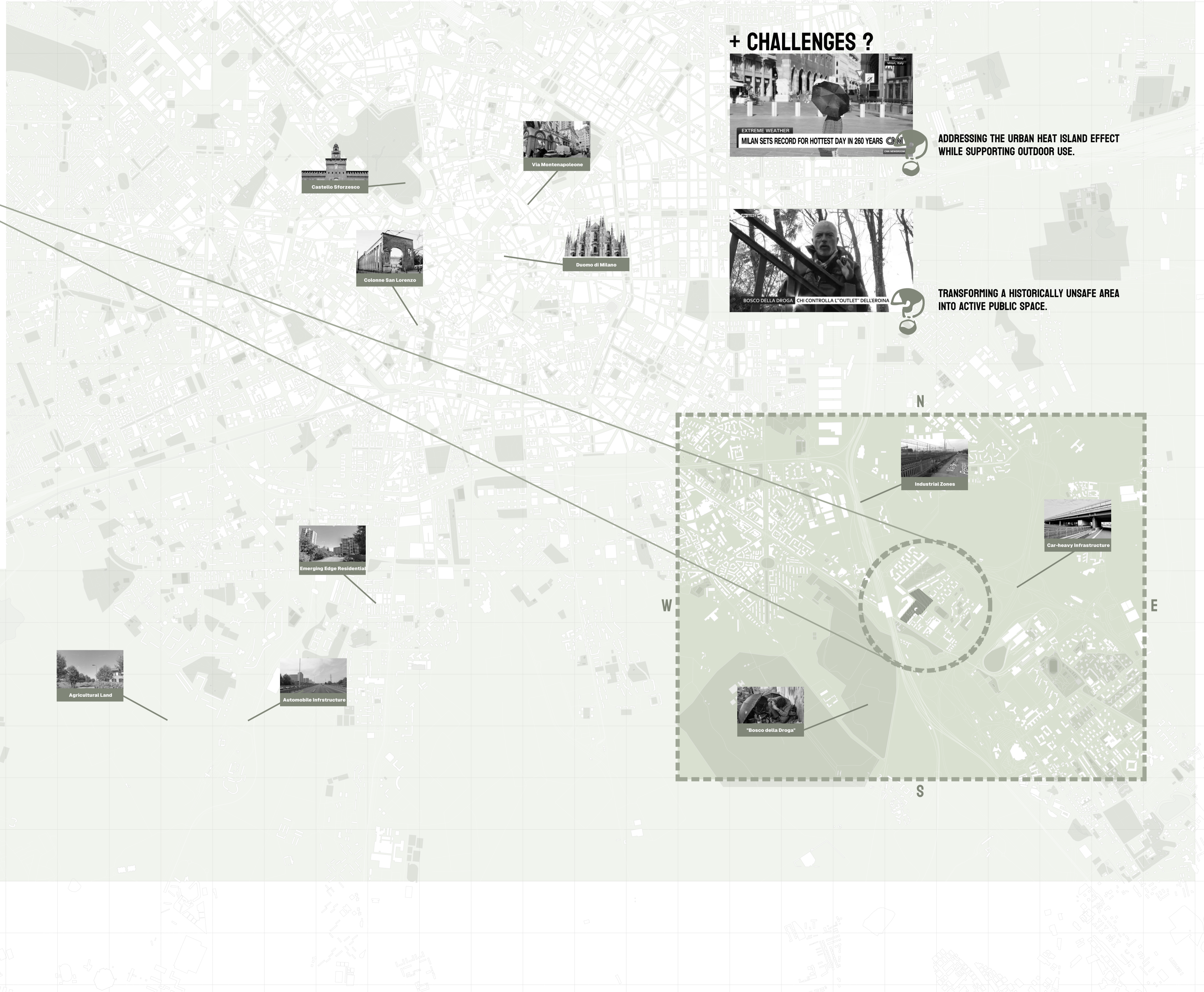


**DISCONNECTED GREEN SPACES**    **PERIPHERAL EDGE GROWTH**    **UNSAFE URBAN EDGES**

Milan's contemporary growth is shaped by disconnected green spaces, unsafe urban edges, and peripheral development across residual land. While these processes increase density and accommodate demand, they often fail to establish continuous public landscapes capable of mitigating environmental stress. The absence of connected green infrastructure intensifies the urban heat island effect and limits access to shaded, breathable public space, contributing to fragmented and insecure environments with reduced opportunities for collective life.

Rogoredo exemplifies these conditions at the urban periphery, where major infrastructure, former industrial land, and recent development coexist without spatial or social continuity. Despite its strategic location within Milan, Rogoredo remains characterised by fragmented open space, limited public amenities, and a perception of insecurity that restricts everyday use and collective presence.

Within this context, the project positions itself as a landscape-led response to the spatial and social fragility of Rogoredo. Rather than introducing a new object or isolated programme, the intervention operates by reconnecting land, cooling the urban environment, and re-establishing conditions for safe and continuous public use. Through the creation of a rewilded green framework, the project addresses the urban heat island effect while transforming a historically unsafe area into an active and accessible public landscape. By prioritising open space, visibility, and everyday occupation, the proposal seeks to shift Rogoredo's perception from marginal territory to shared ground, supporting long-term ecological repair and collective life within the broader structure of Milan.



## + CHALLENGES ?



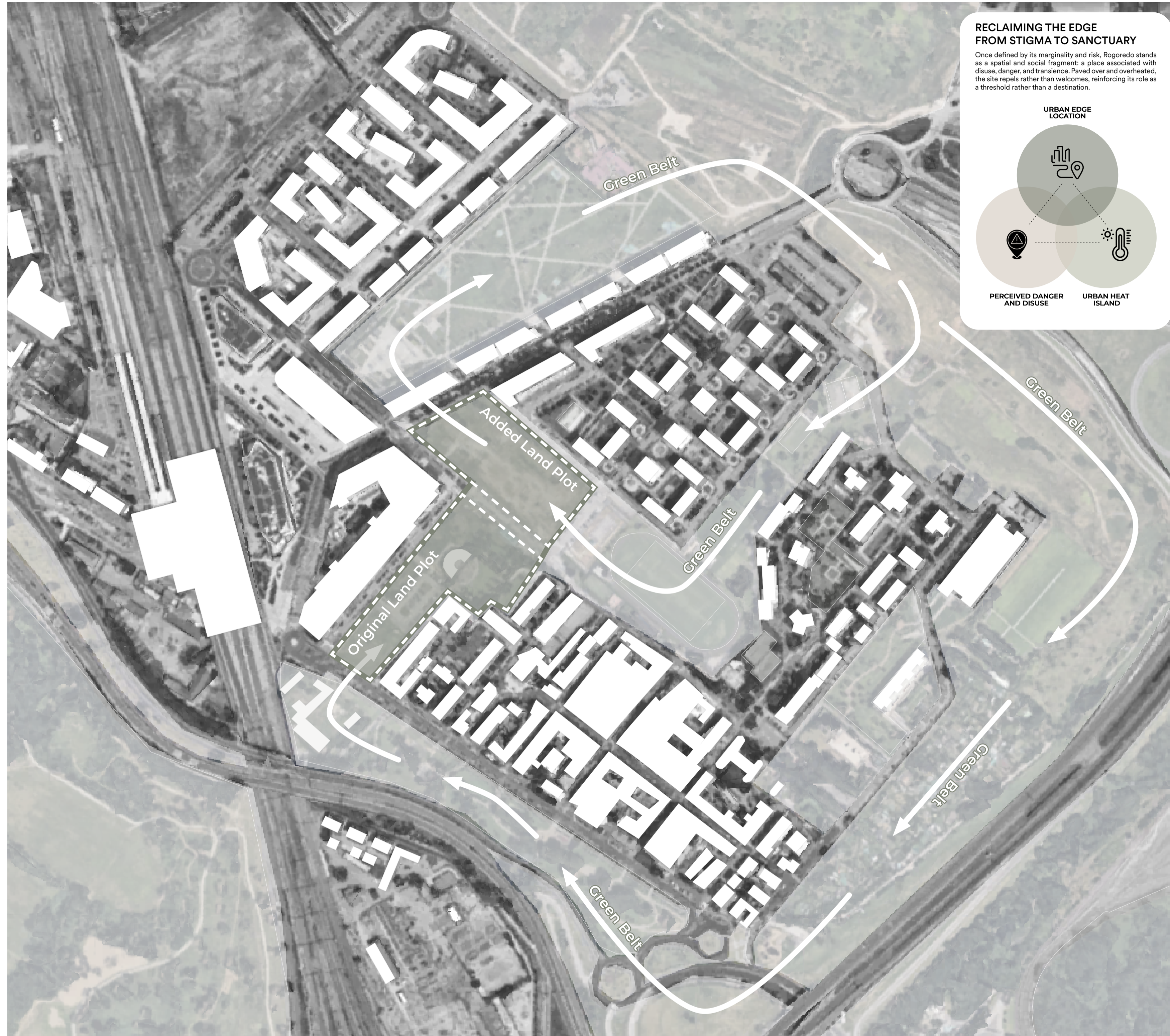
**EXTREME WEATHER**  
MILAN SETS RECORD FOR HOTTEST DAY IN 260 YEARS

**ADDRESSING THE URBAN HEAT ISLAND EFFECT WHILE SUPPORTING OUTDOOR USE.**



**BOSCO DELLA DROGA** CHI CONTROLLA L'OUTLET DELL'ERONA

**TRANSFORMING A HISTORICALLY UNSAFE AREA INTO ACTIVE PUBLIC SPACE.**

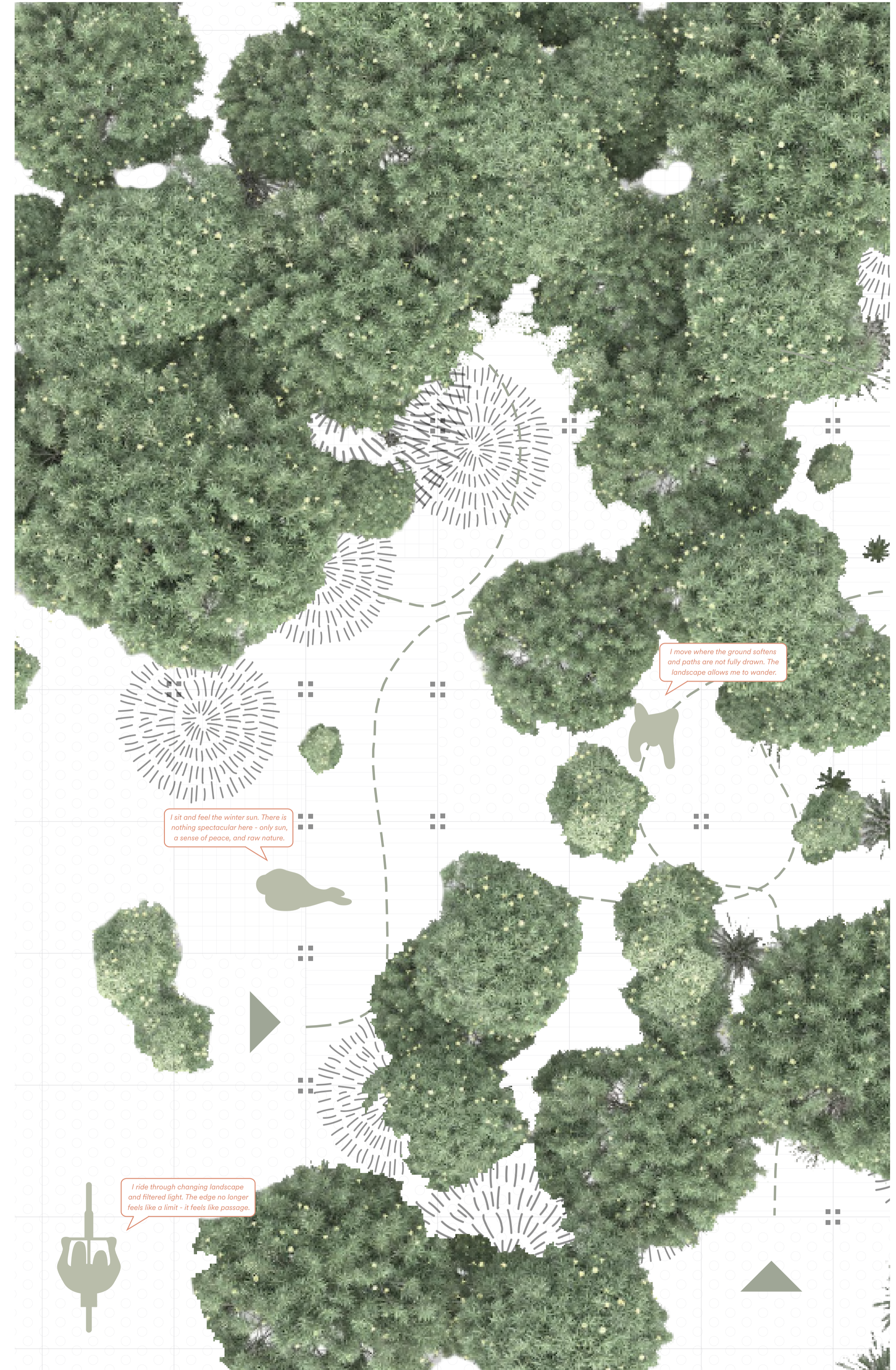


**RECLAIMING THE EDGE FROM STIGMA TO SANCTUARY**  
 Once defined by its marginality and risk, Rogoredo stands as a spatial and social fragment: a place associated with disuse, danger, and transience. Paved over and overheated, the site repels rather than welcomes, reinforcing its role as a threshold rather than a destination.

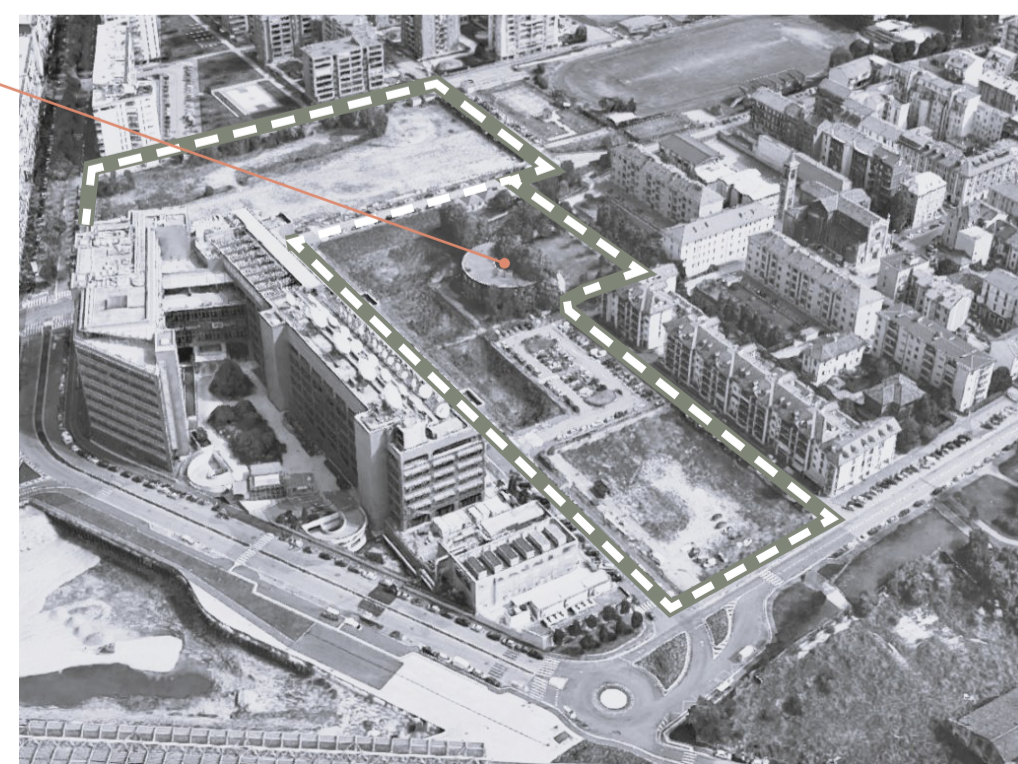
URBAN EDGE LOCATION

PERCEIVED DANGER AND DISUSE

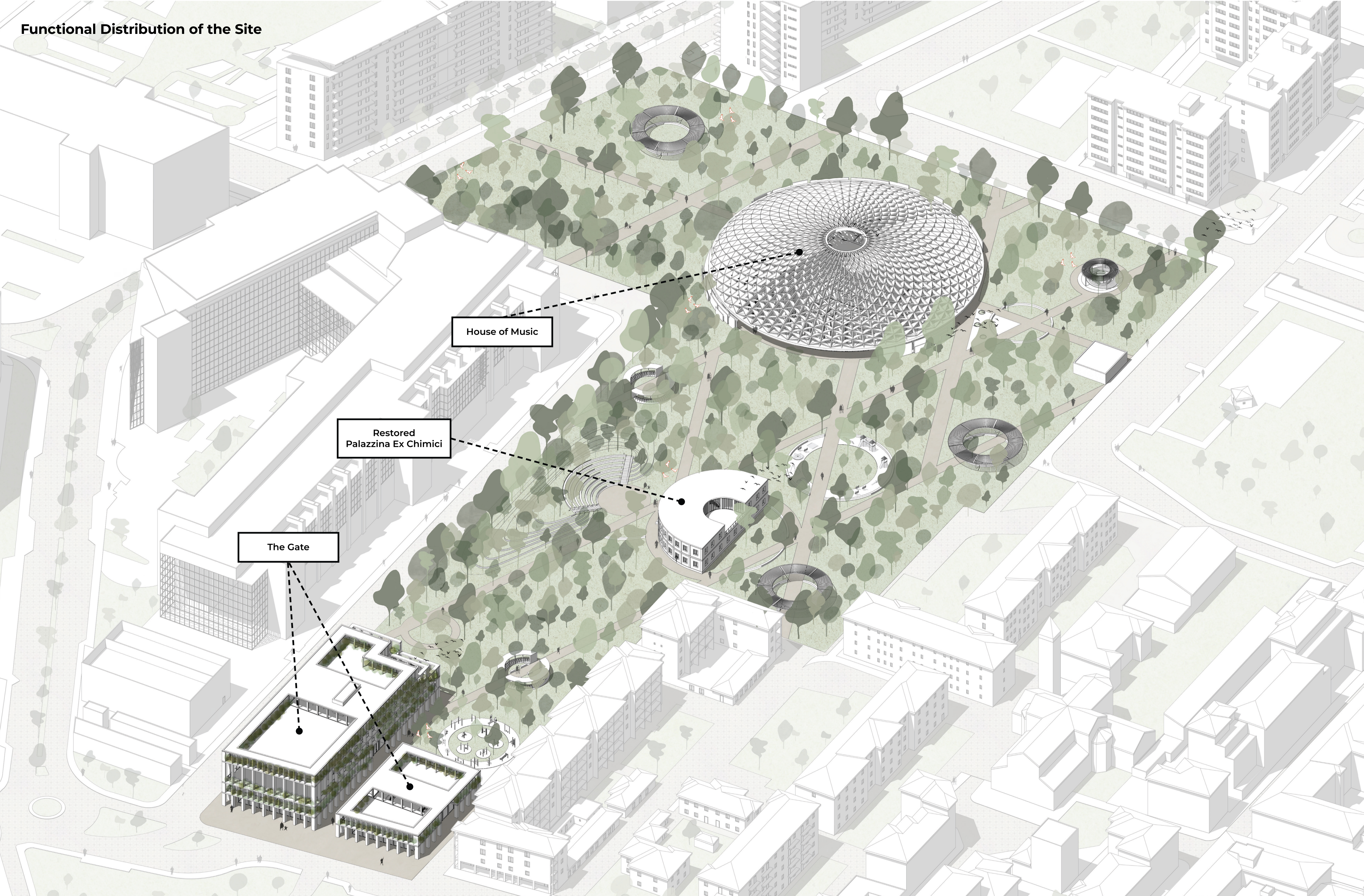
URBAN HEAT ISLAND

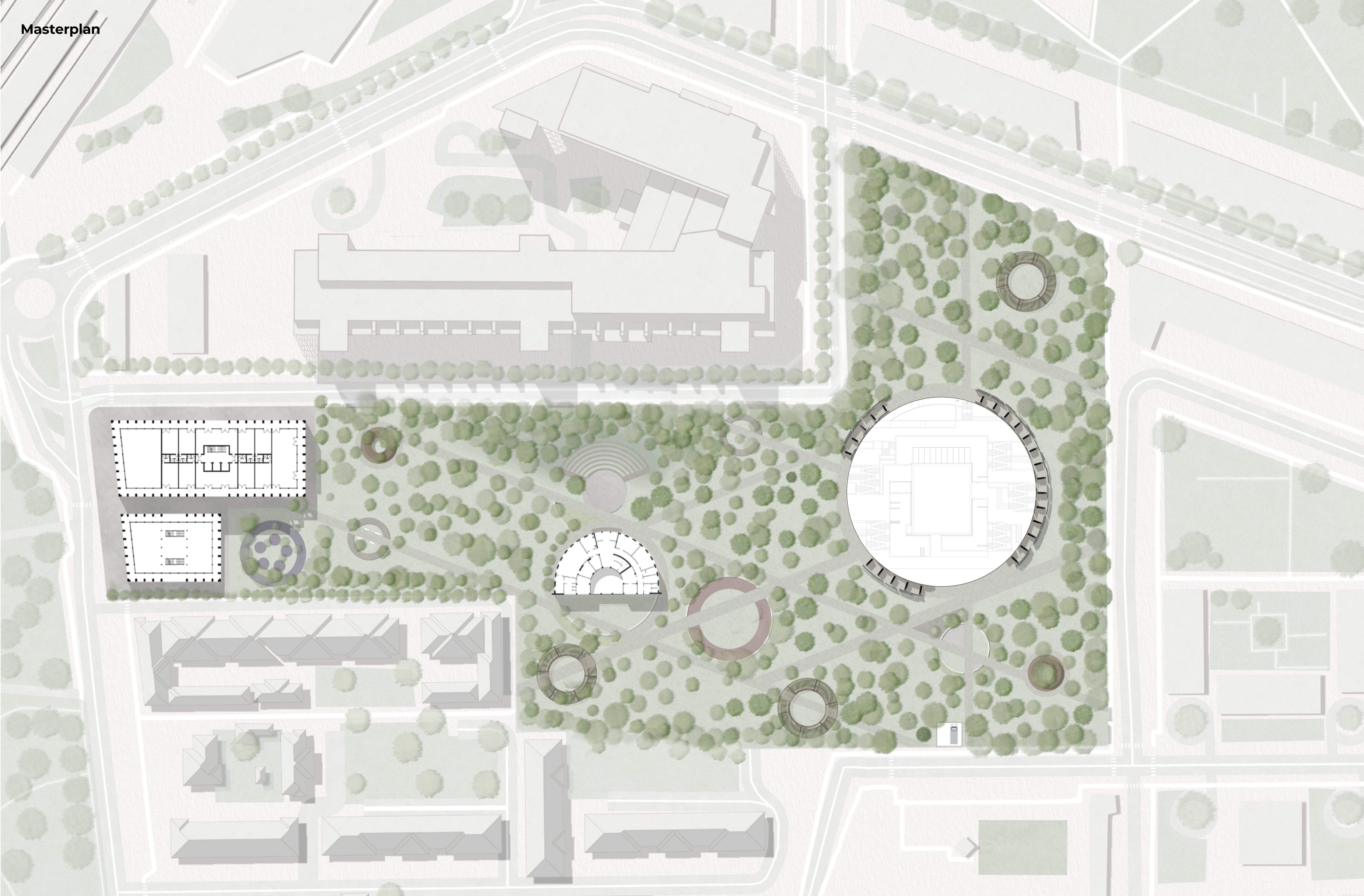


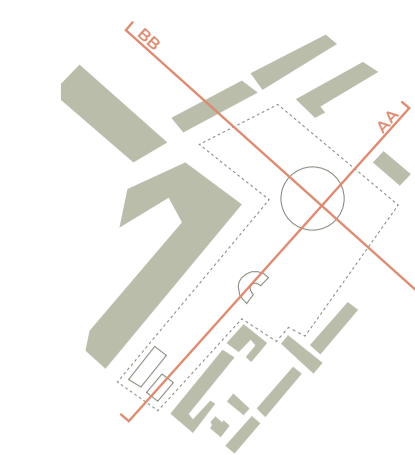
Palazzina Ex Chimici



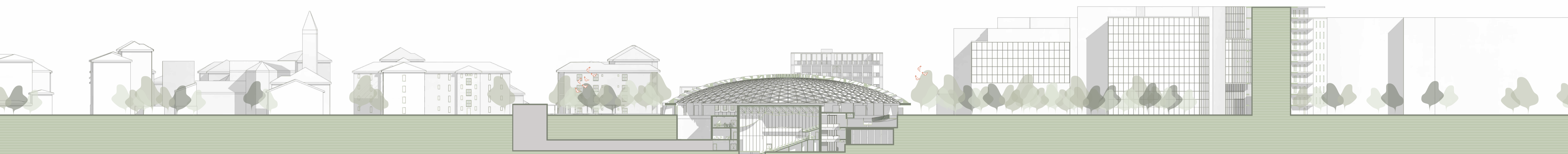
# Functional Distribution of the Site







Section AA



Section BB