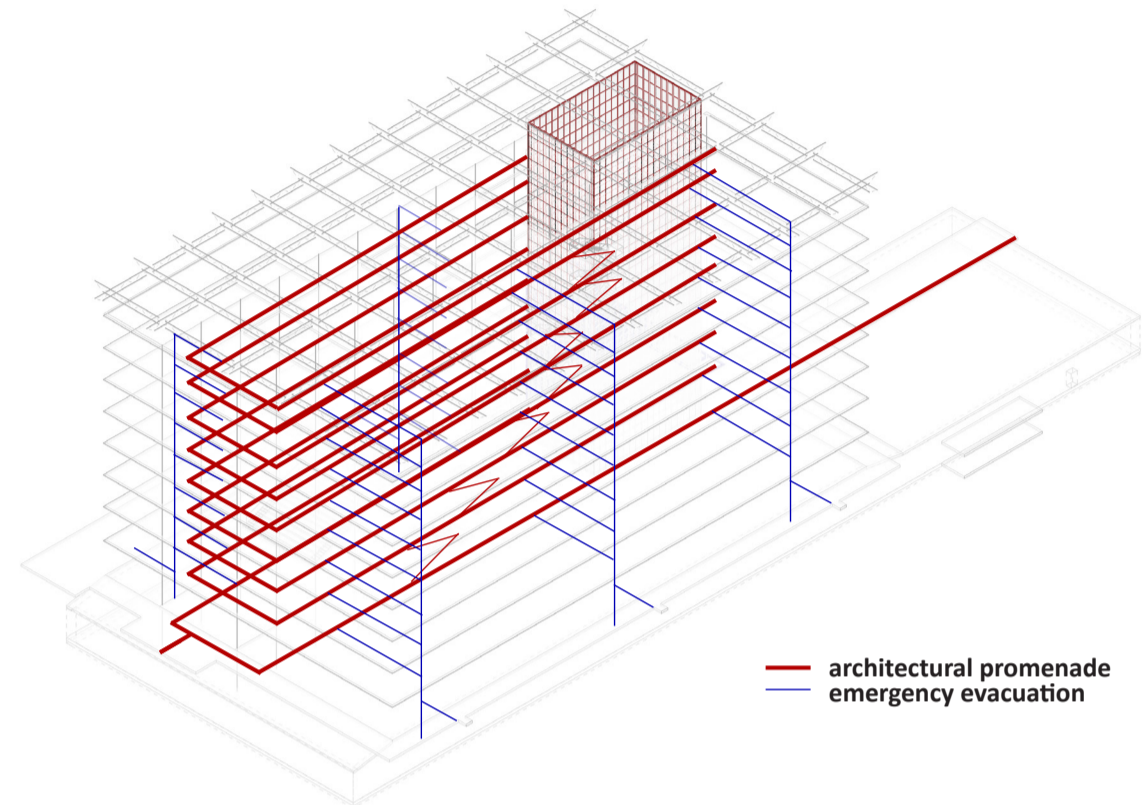
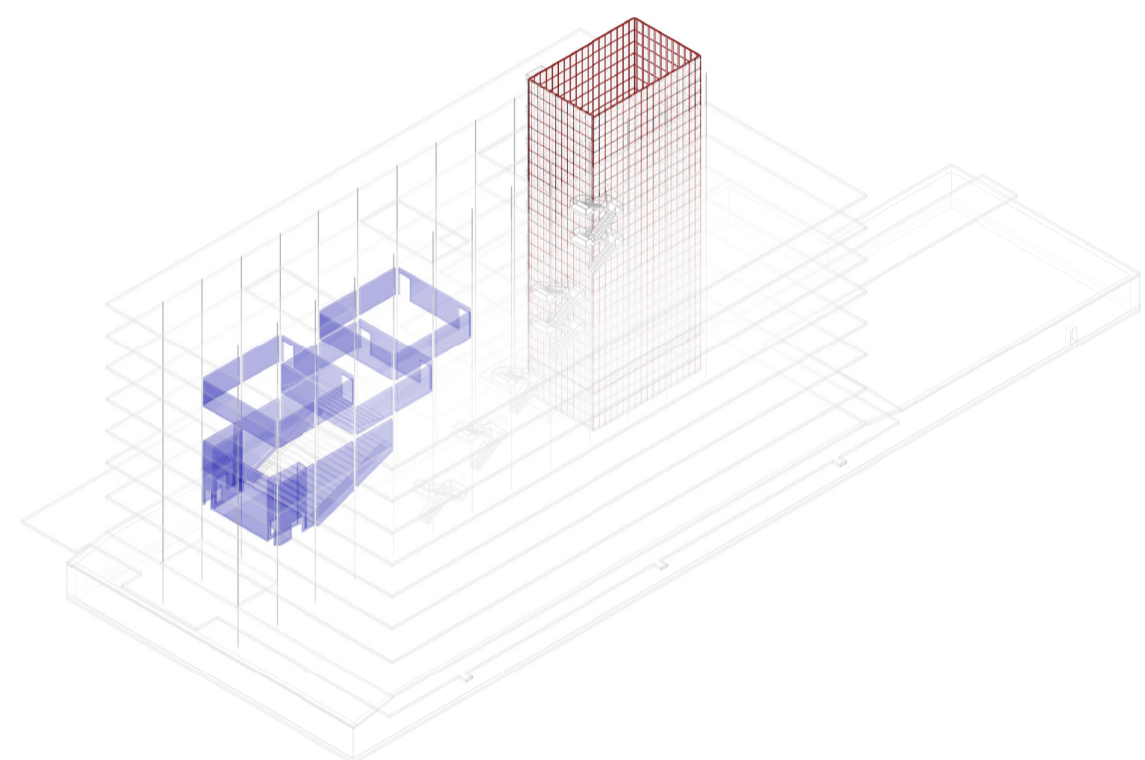


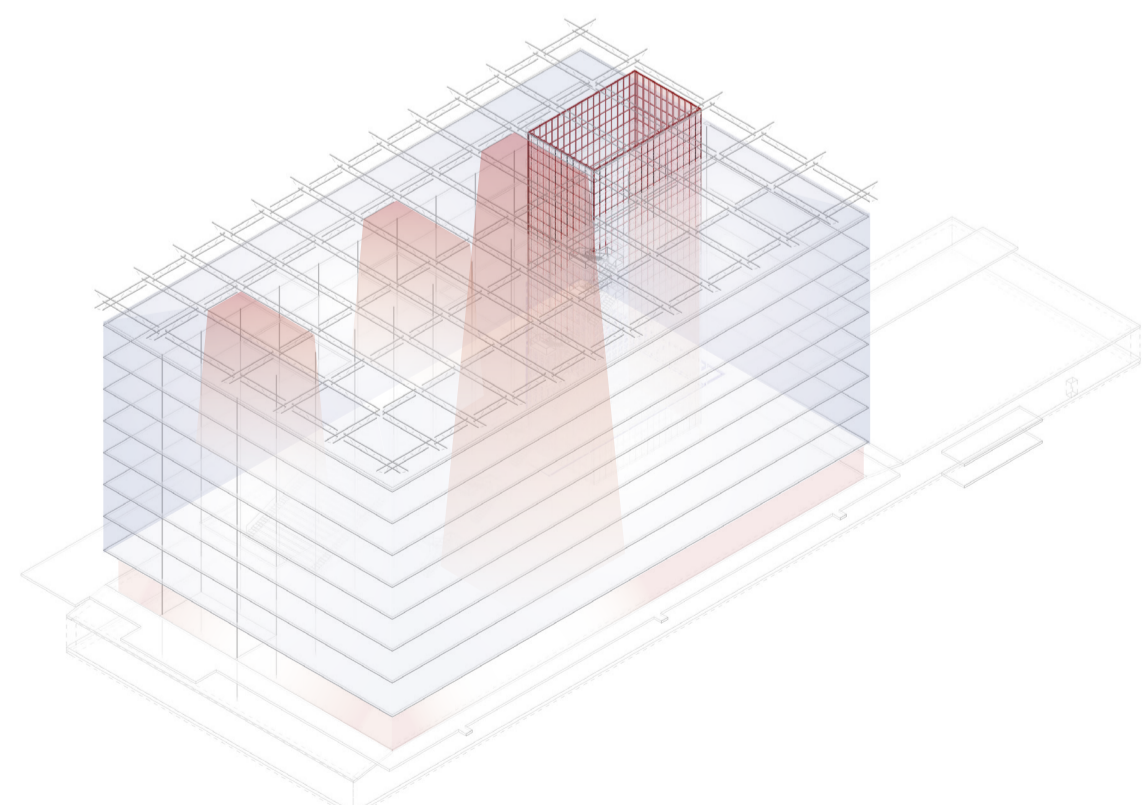
**SPATIAL ORGANIZATION DIAGRAM**  
King Cross columns define the atrium space as well as the orthogonal spatial organization, while their rhythmic repetition and shape aid with wayfinding.



**CIRCULATION**  
Flow of people

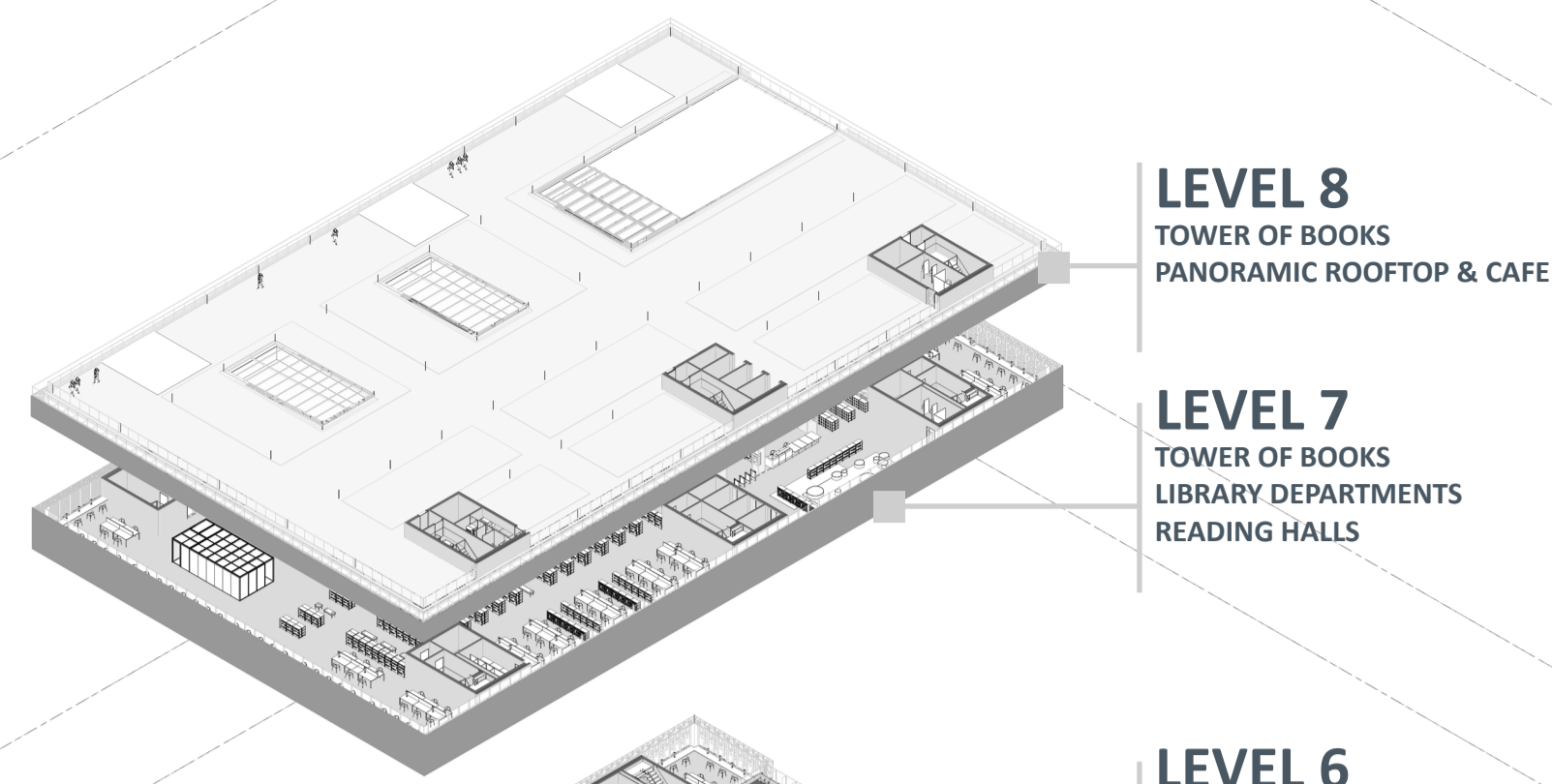


**HIERARCHY**  
Large gathering spaces are placed opposite the Tower of Books to counter-balance its presence.

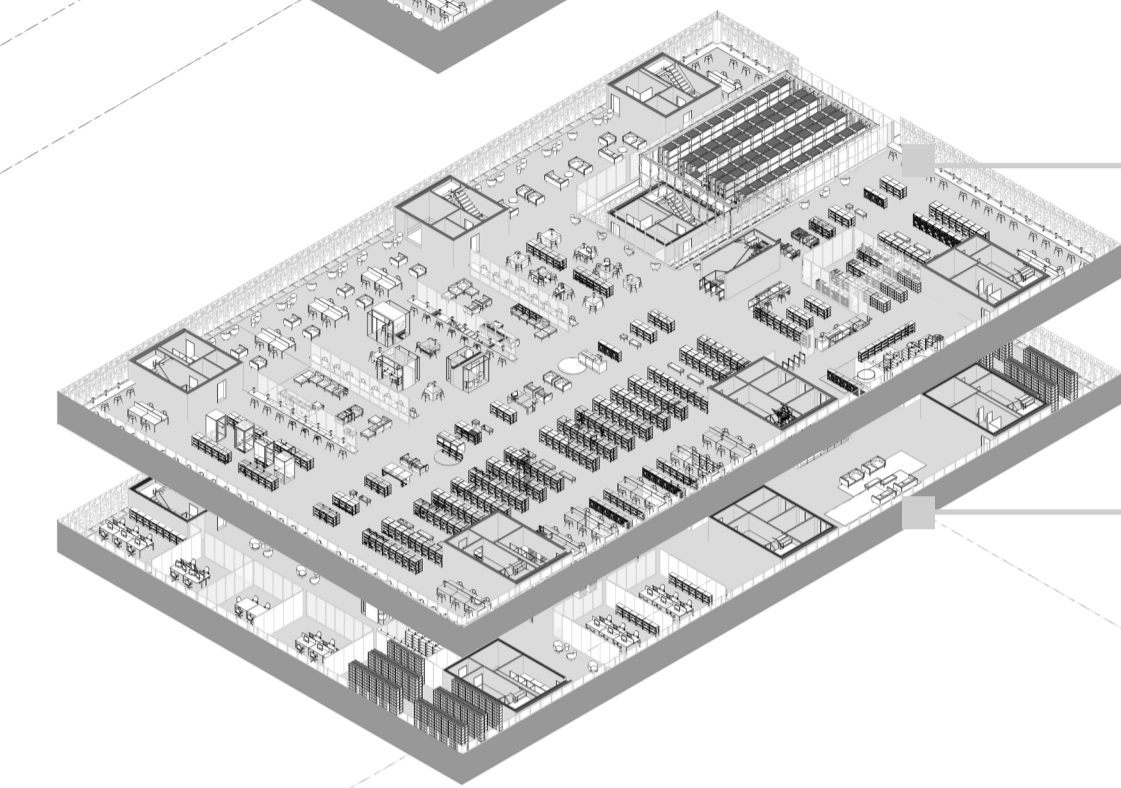


**DAYLIGHT**  
Most of the reading spaces are concentrated on the north side. Skylights are found above some reading spaces as well as the atrium.

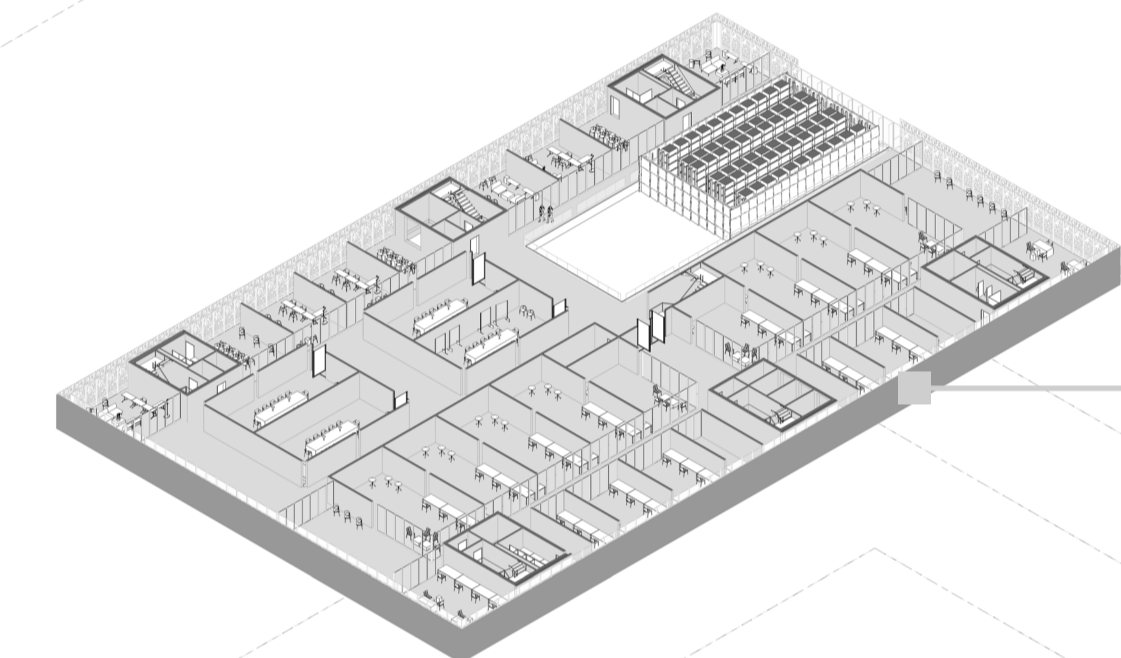
**SPATIAL ORGANIZATION**



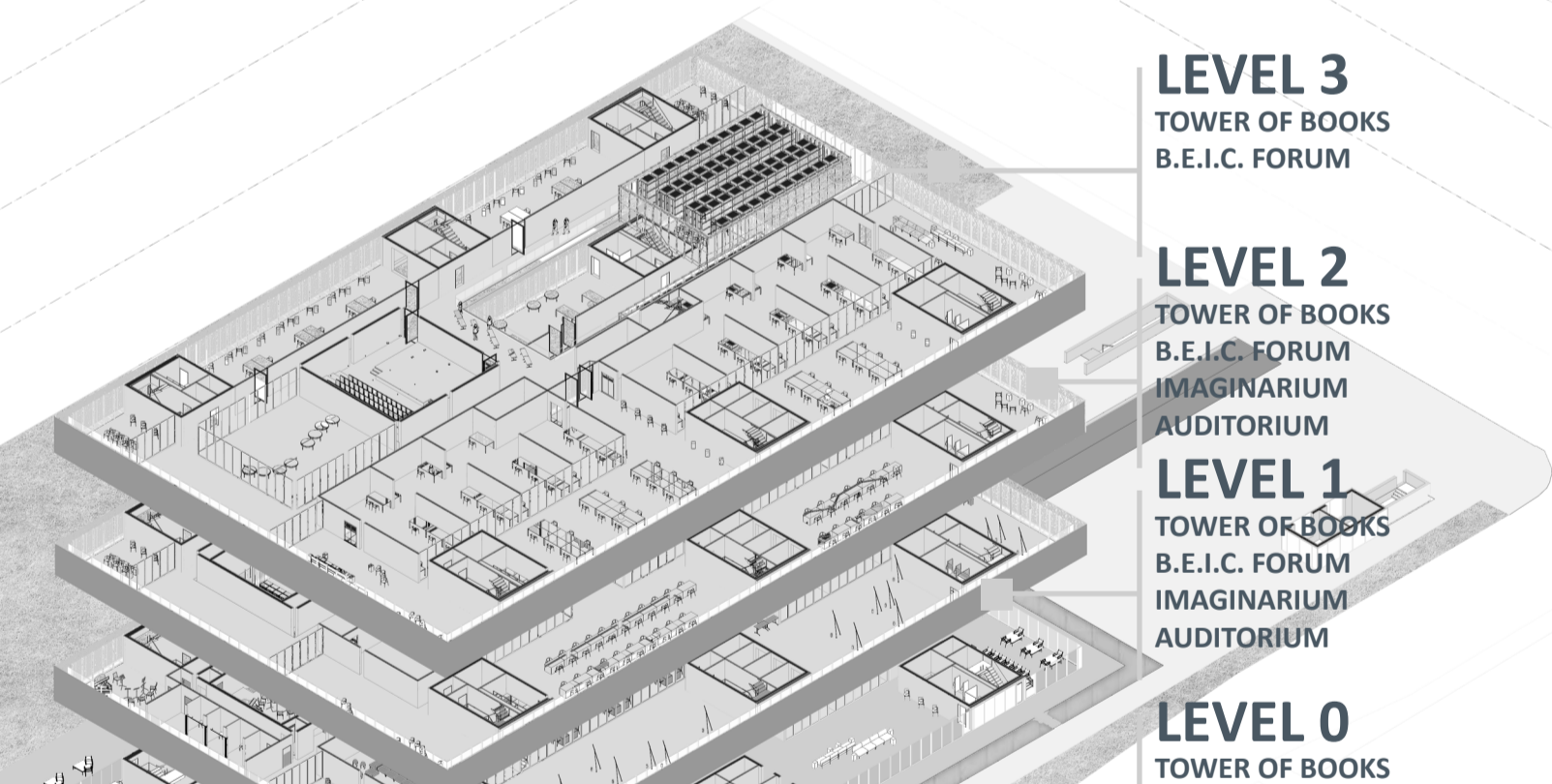
**LEVEL 8**  
TOWER OF BOOKS  
PANORAMIC ROOFTOP & CAFE



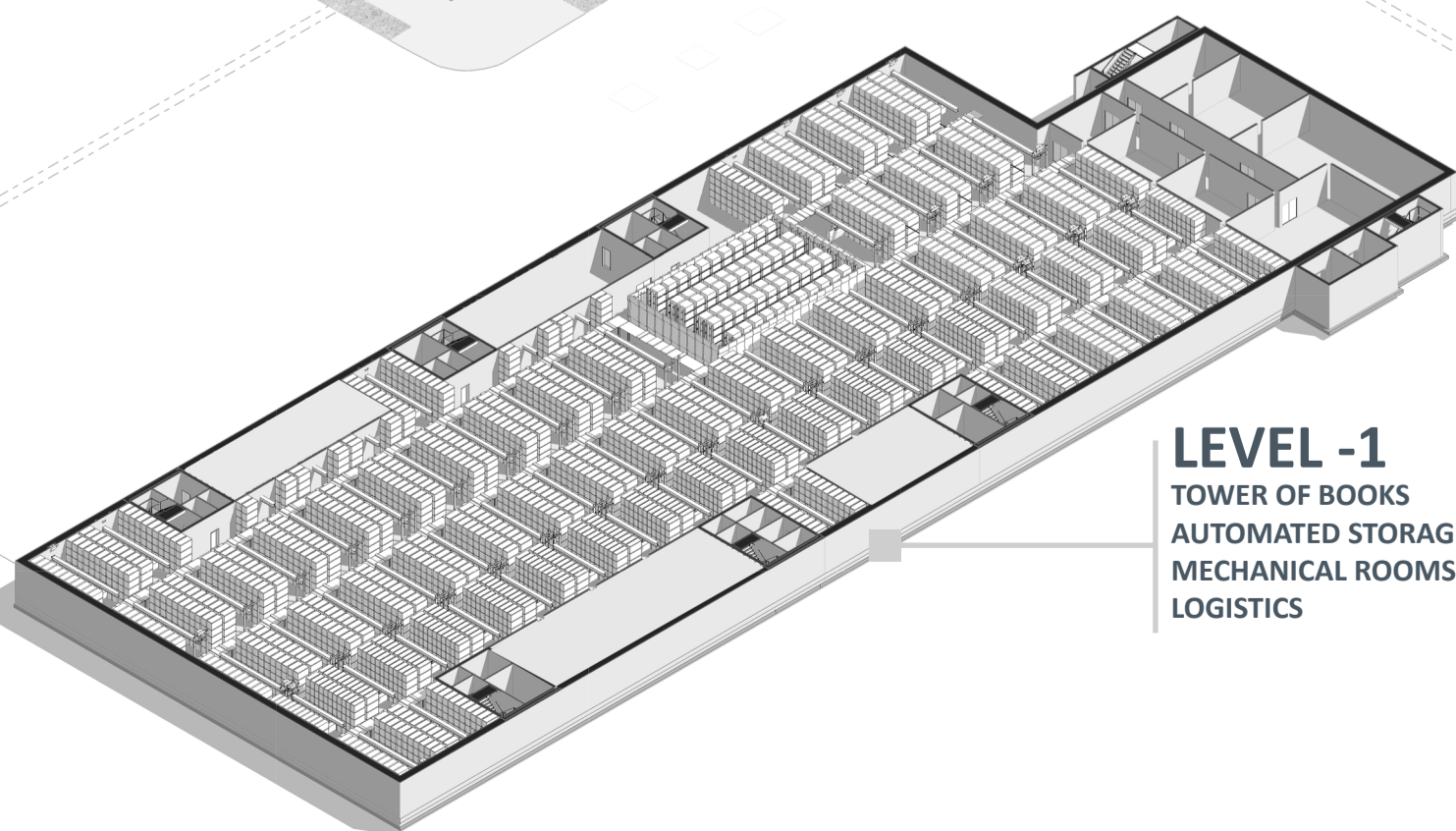
**LEVEL 7**  
TOWER OF BOOKS  
LIBRARY DEPARTMENTS  
READING HALLS



**LEVEL 6**  
TOWER OF BOOKS  
LIBRARY DEPARTMENTS  
READING HALLS



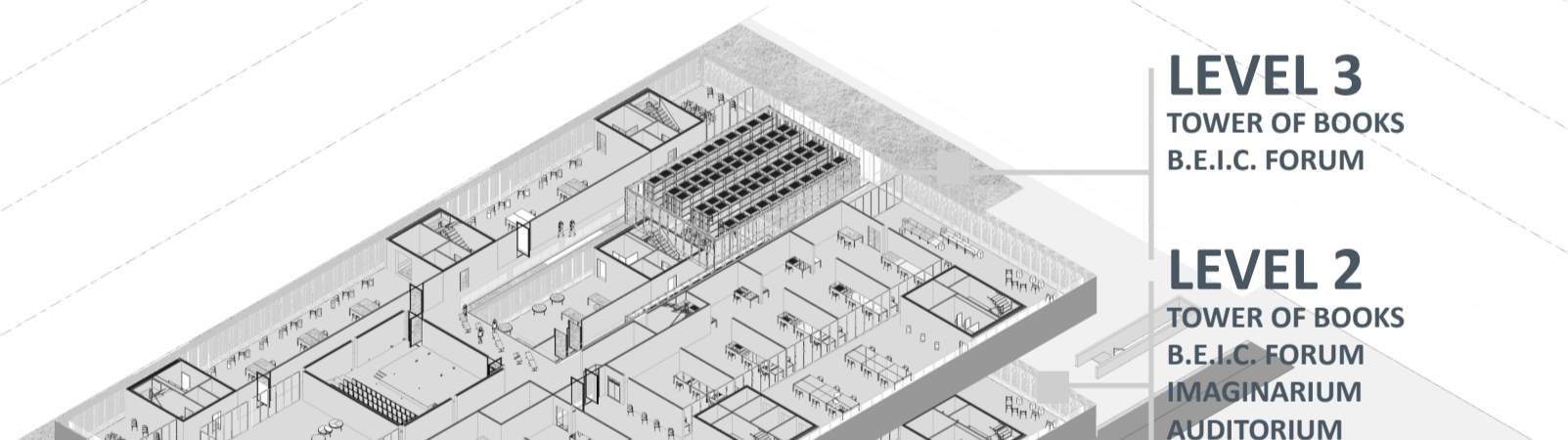
**LEVEL 5**  
TOWER OF BOOKS  
DIGITAL DEPARTMENTS



**LEVEL 4**  
TOWER OF BOOKS  
INTERNAL SERVICES



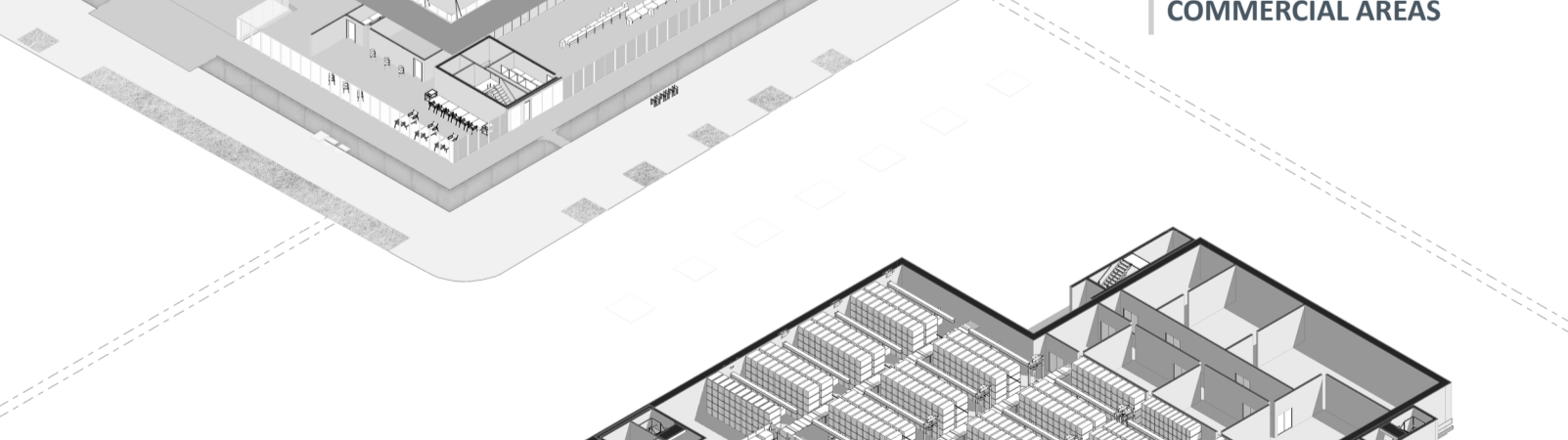
**LEVEL 3**  
TOWER OF BOOKS  
B.E.I.C. FORUM



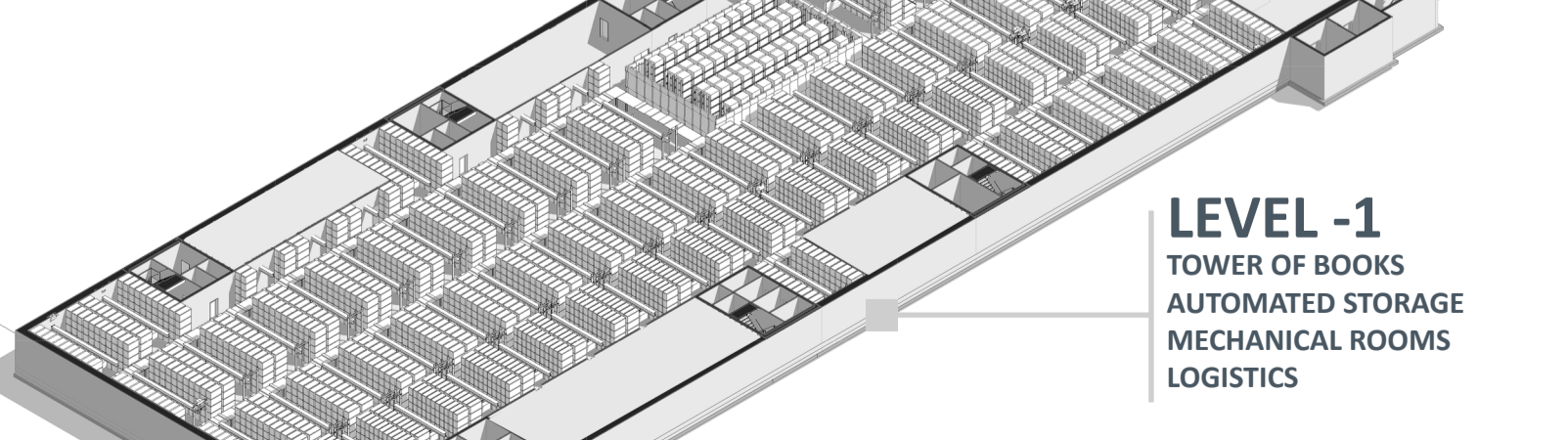
**LEVEL 2**  
TOWER OF BOOKS  
B.E.I.C. FORUM  
IMAGINARIUM  
AUDITORIUM



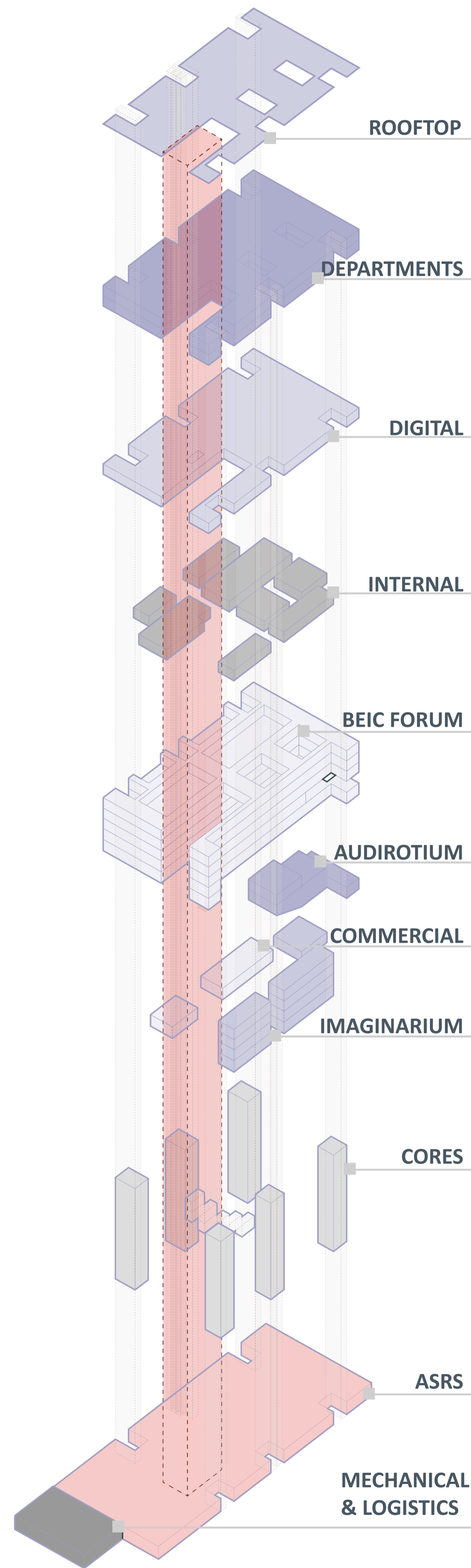
**LEVEL 1**  
TOWER OF BOOKS  
B.E.I.C. FORUM  
IMAGINARIUM  
AUDITORIUM



**LEVEL 0**  
TOWER OF BOOKS  
ATRIUM  
IMAGINARIUM  
COMMERCIAL AREAS



**LEVEL -1**  
TOWER OF BOOKS  
AUTOMATED STORAGE  
MECHANICAL ROOMS  
LOGISTICS



PROGRAM	
B.E.I.C REQUIREMENTS	PROJECT PARAMETERS
FUNCTION: PANORAMIC ROOFTOP	
AS PART OF DEPARTMENTS: Panoramic Room/Terrace	LEVELS: 8 AUXILIARY SPACES: Rooftop Bar Roof Garden TOTAL AREA: 2693 m <sup>2</sup>
FUNCTION: LIBRARY DEPARTMENTS	
TOTAL AREA: 7700 m <sup>2</sup>	LEVELS: 6,7 SEATS: 600 TOTAL AREA: 4986 m <sup>2</sup>
FUNCTION: DIGITAL DEPARTMENTS	
TOTAL AREA: 1350 m <sup>2</sup>	LEVELS: 5 SEATS: 185 TOTAL AREA: 2540 m <sup>2</sup>
FUNCTION: INTERNAL SERVICES	
TOTAL AREA: 4600 m <sup>2</sup>	LEVELS: 4 SEATS: 225 TOTAL AREA: 1449 m <sup>2</sup>
FUNCTION: AUDITORIUM	
SEATS: 300 AUXILIARY SPACES: Backstage Control Room Dressing Rooms Rehearsal Rooms Storage Foyer Translation Booths Cloakroom	LEVELS: 1,2 SEATS: 170 AUXILIARY SPACES: Backstage Control Room Dressing Rooms Rehearsal Rooms Storage Foyer Translation Booths Cloakroom
TOTAL AREA: 1300 m <sup>2</sup>	TOTAL AREA: 676 m <sup>2</sup>
FUNCTION: IMAGINARIUM	
AUXILIARY SPACES: Reception Green Area Laboratories Drama Space	LEVELS: 0,1,2,3 AUXILIARY SPACES: Reception Green Area Laboratories Drama Space (85 seats)
TOTAL AREA: 1800 m <sup>2</sup>	SEATS: 185+85 TOTAL AREA: 1317 m <sup>2</sup>
FUNCTION: COMMERCIAL AREA	
TOTAL AREA: 1350 m <sup>2</sup>	LEVELS: 0 STORES: 6 TOTAL AREA: 336 m <sup>2</sup>
FUNCTION: B.E.I.C. FORUM	
AUXILIARY SPACES: Entrance (1600 m <sup>2</sup> ) Commercial (1350 m <sup>2</sup> ) Seating (2385 seats) Exhibition (150 l.m.) Pop-up stores Security Book-Drop Cloakroom	LEVELS: 0,1,2,3,4 AUXILIARY SPACES: Atrium/Gallery (469 m <sup>2</sup> ) Promenade (3570 m <sup>2</sup> ) Reception, Info and Flexible Areas (2076 m <sup>2</sup> ) Break Areas (1314 m <sup>2</sup> ) Laboratories and Multi-Media (2386 m <sup>2</sup> ) Pop-up stores Security Book-Drop Cloakroom
TOTAL AREA: 4300 m <sup>2</sup>	TOTAL AREA: 9346 m <sup>2</sup>
FUNCTION: AUTOMATED STORAGE	
CAPACITY: 2,500,000 volumes minimum estimated 30 units per box of 60x40x30cm	LEVELS: All levels BIBLIOS COLLECTION: 3564 boxes CONSUMABLES: 3982 m <sup>2</sup> (6710 boxes) CAPACITY: 2,362,020 volumes in boxes + open shelves
FUNCTION: SERVICES	
RESTROOMS SANITARY USE SHAFTS STORAGE VERTICAL CIRCULATION	LEVELS: All RESTROOMS: 498 m <sup>2</sup> SANITARY USE: 119 m <sup>2</sup> SHAFTS: 365 m <sup>2</sup> STORAGE: 200 m <sup>2</sup> VERTICAL CIRCULATION: 1596 m <sup>2</sup>
FUNCTION: LOGISTICS (INCOMING & OUTGOING VOLUMES)	
	LEVELS: -1 TOTAL AREA: 521 m <sup>2</sup>
FUNCTION: MECHANICAL ROOMS	
	LEVELS: Level -1 TOTAL AREA: 568 m <sup>2</sup>
SUMMARY	
TOTAL GFA: 30000 m <sup>2</sup>	TOTAL GFA: 33406 m <sup>2</sup> TOTAL SERVICE SPACES: 6916 m <sup>2</sup> TOTAL SERVED SPACES: 26490 m <sup>2</sup> RATIO: 26%