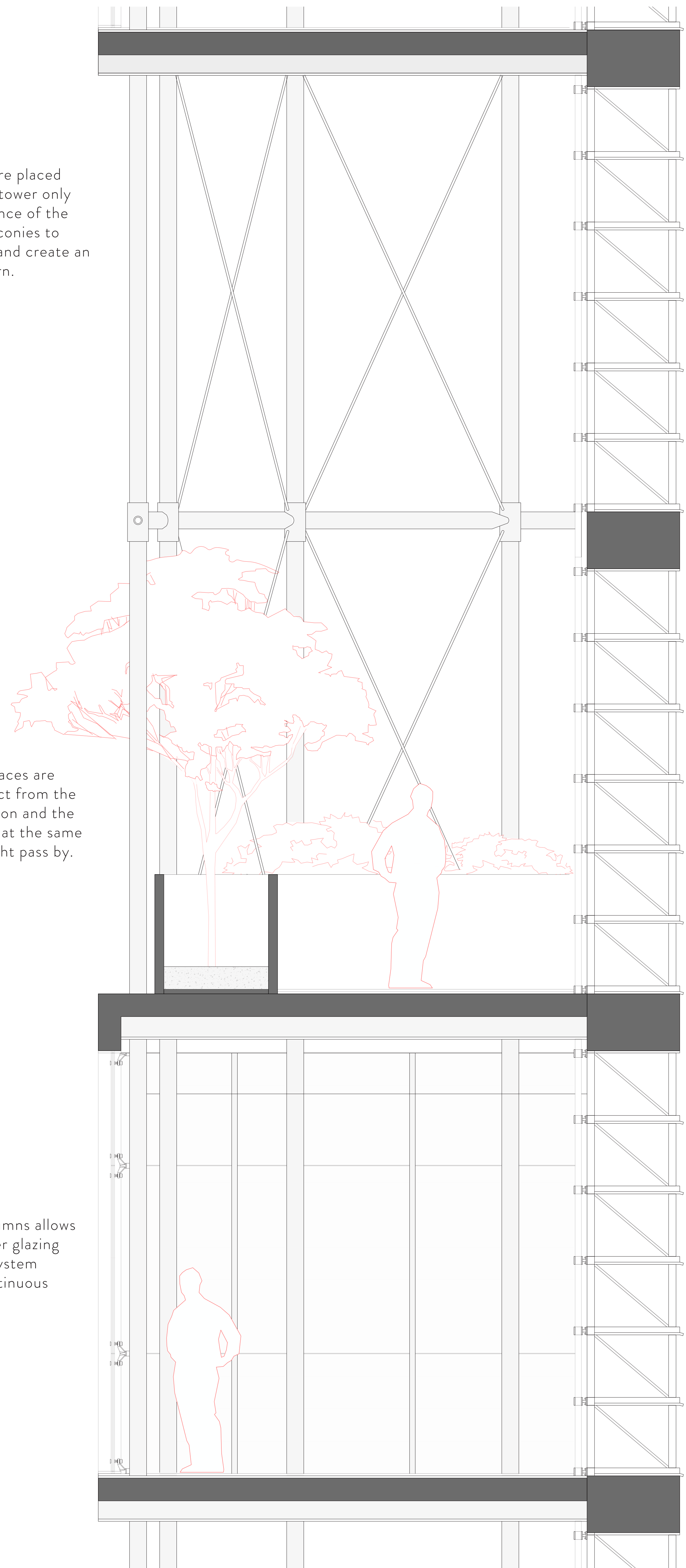


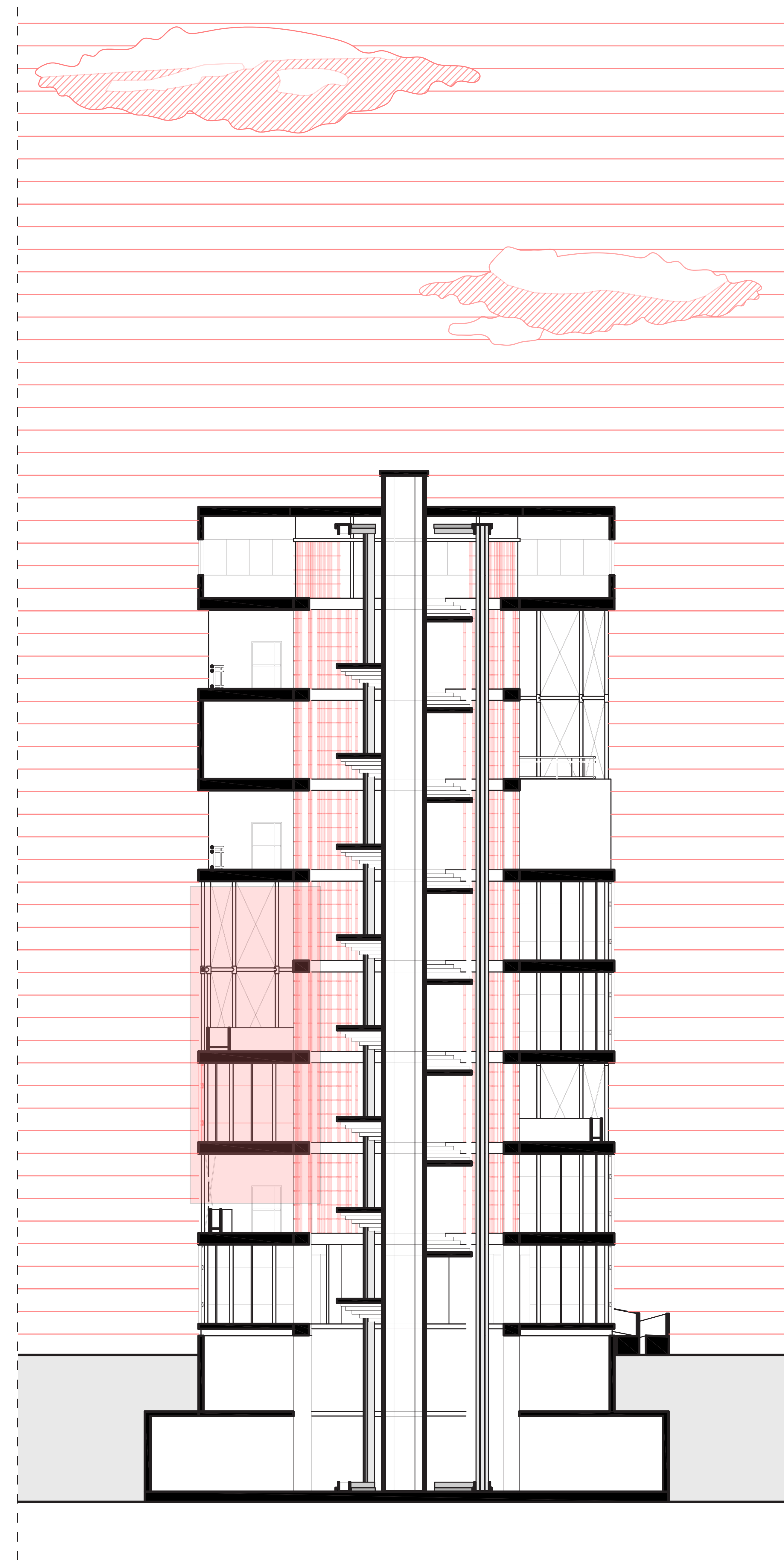
The bracings are placed all around the tower only in correspondance of the jutting out balconies to both subtain and create an external pattern.

The green terraces are made to protect from the acoustic pollution and the irradiation but at the same time let the light pass by.

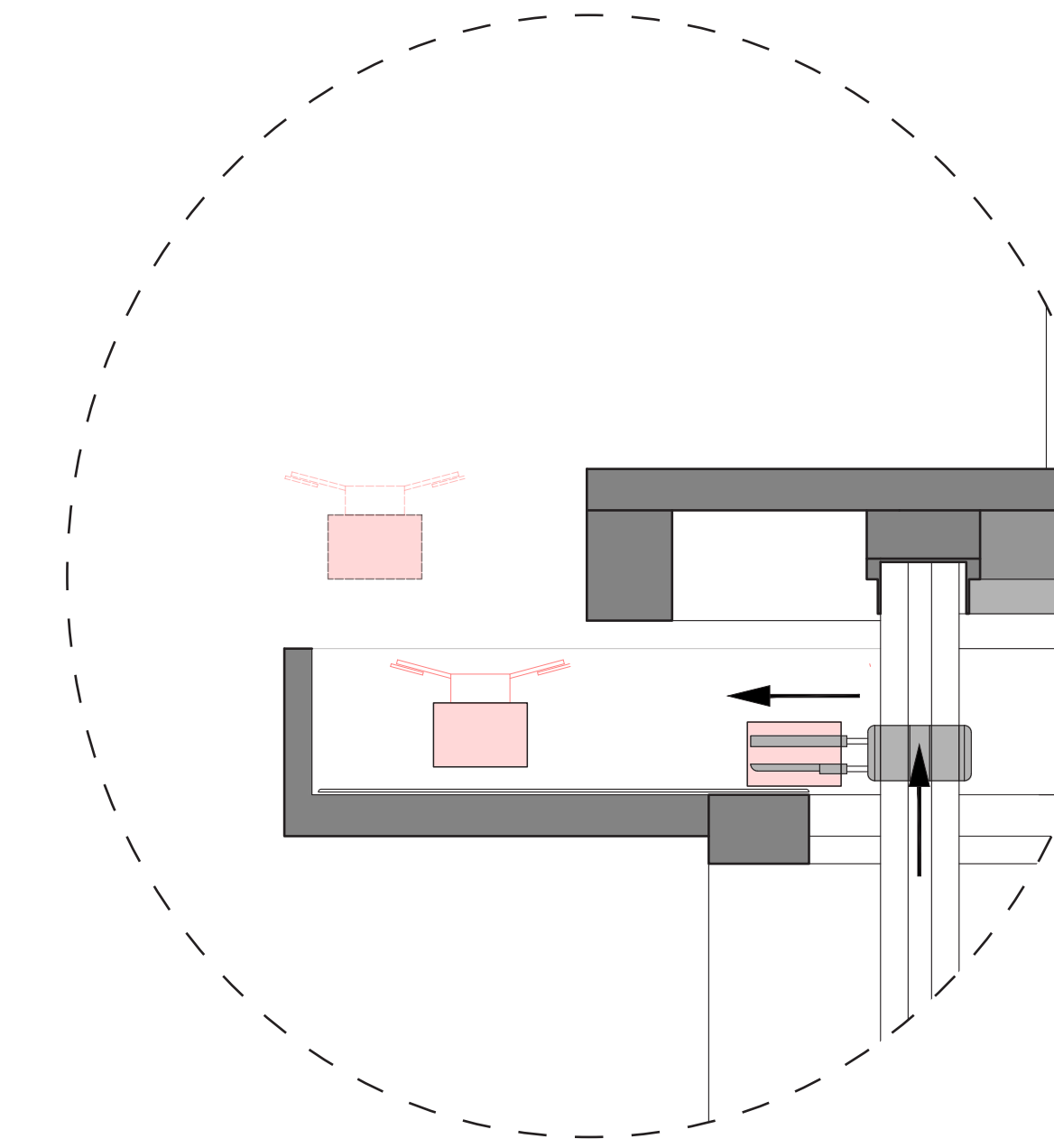
The inside columns allows to have a spider glazing curtain walls system creating a continuous facade.



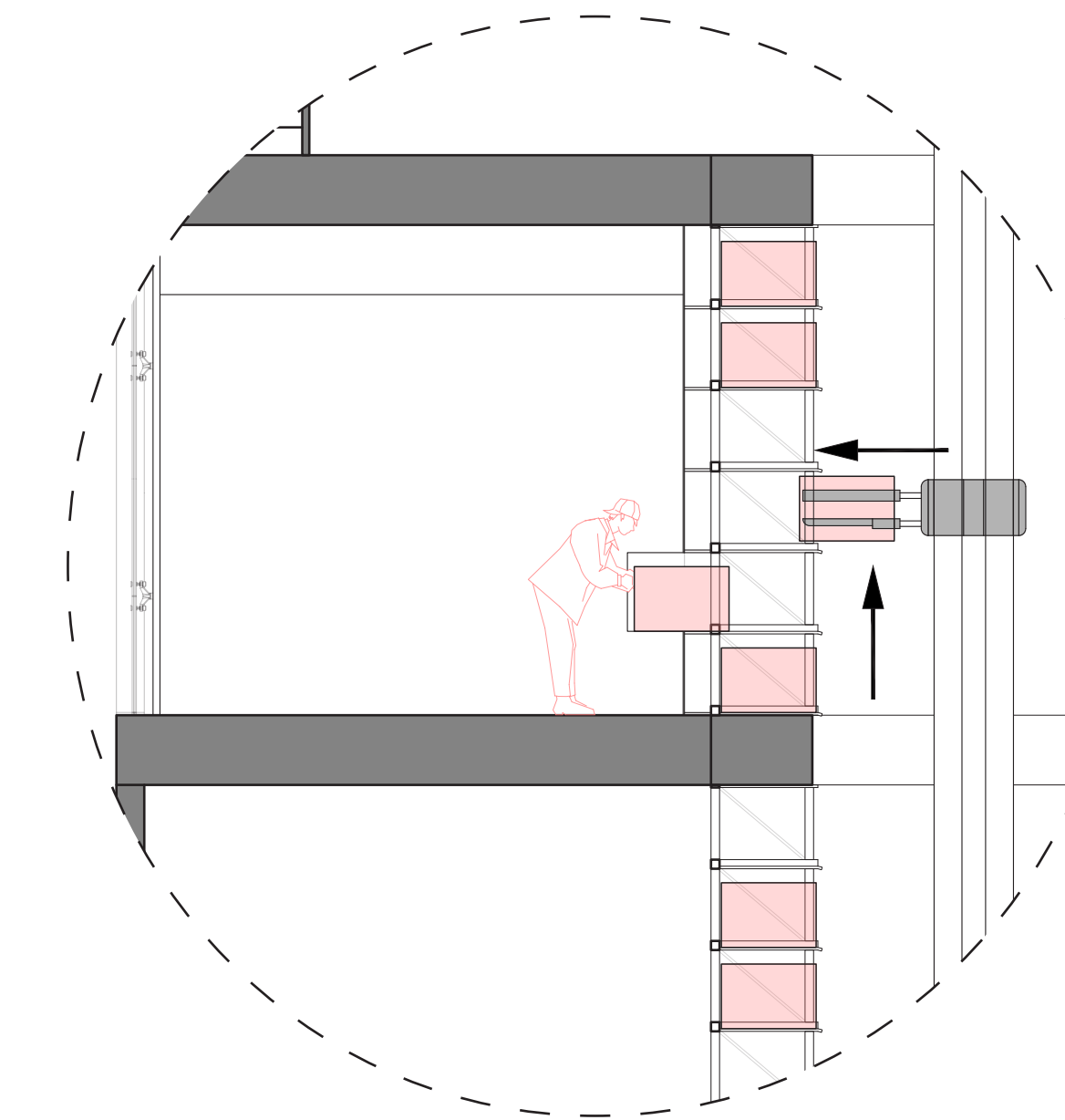
1:20 DETAIL SECTION



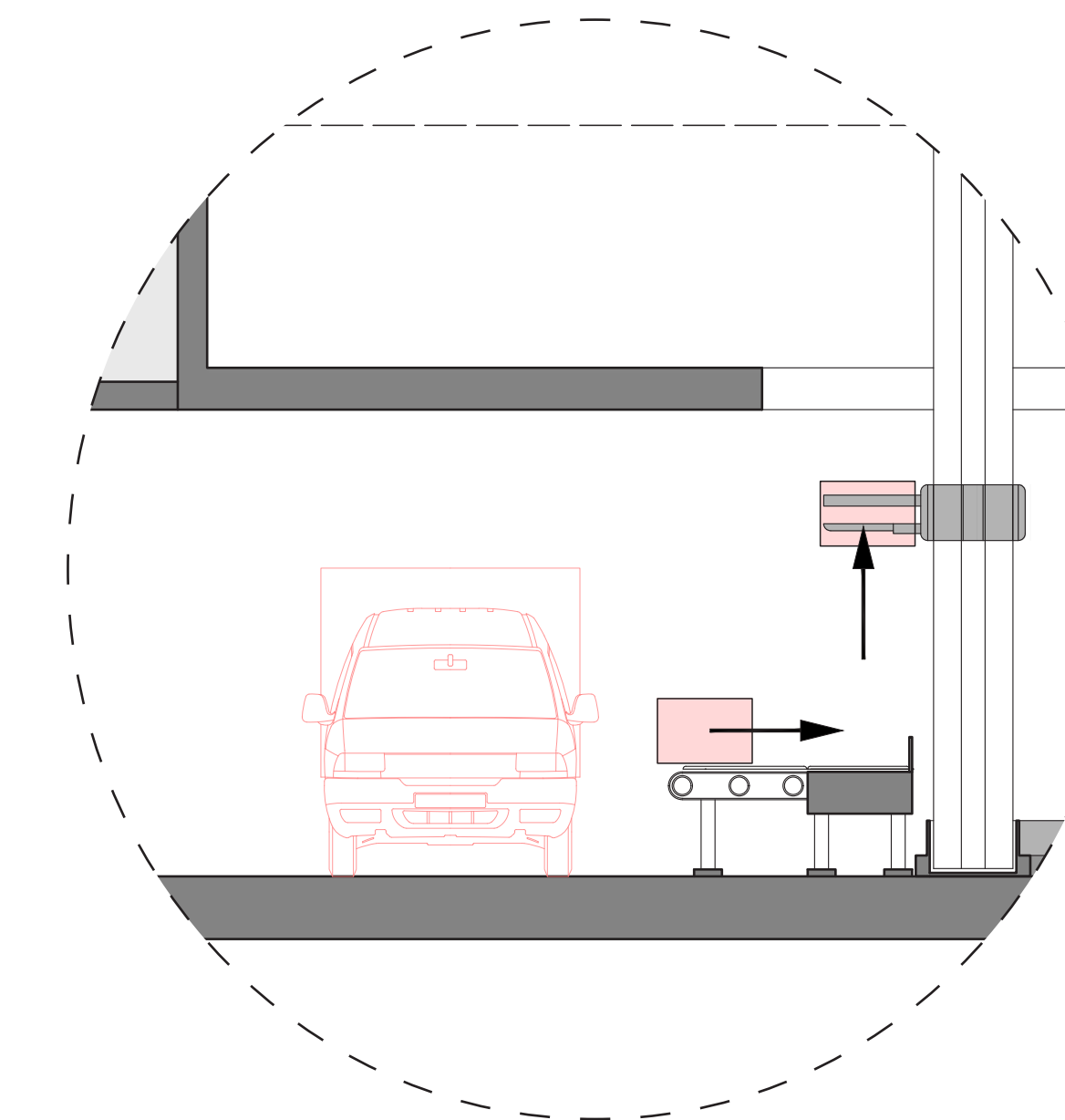
1:100 NORTH SECTION



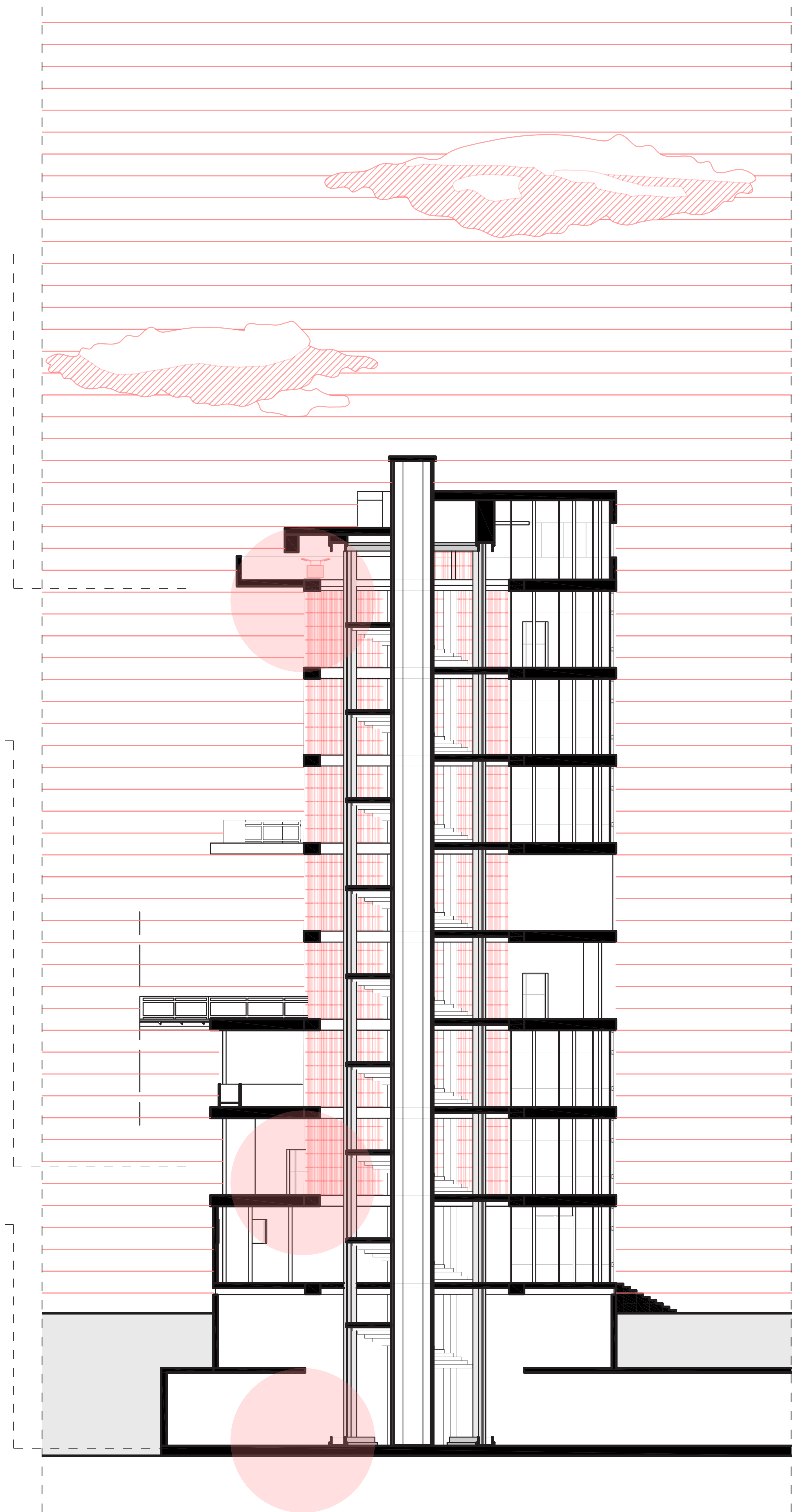
The boxes can be stored inside the tower and wait to be retired by a costumer or sended away trough the drones that can reach all the close areas.



The mechanical risers run all up and down trough the tower and rotate 290° to reach all the cells in the tower. And the costumer can order and retire a box directly from the locker at the 2nd Floor.



As first step the supplies arrives in the tower in the underground level through the electric vans and there are unloaded in the conveyor belt that bring them to the automatic mechanical risers.



1:100 WEST SECTION