

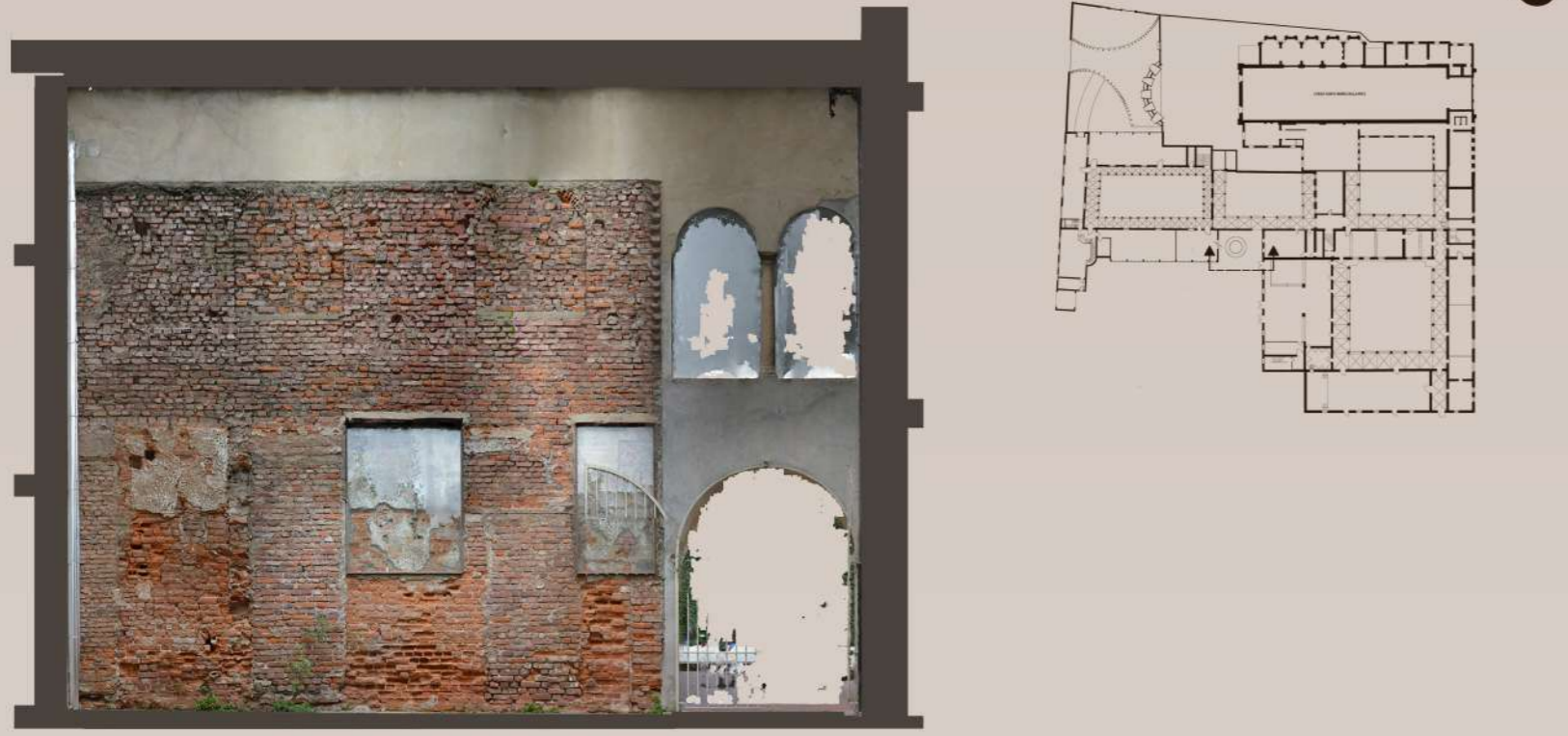
CAFETERIA

In the continuity of improving Società Umanitaria, a cafeteria as a gathering space, available for all users, is created.

An analysis of this wall was made for its preservation and the rising damp has been detected as the main problem. To overcome this decay for the future, an air drain is created to let the water from the soil to evaporate. This intervention will prevent efflorescence and salts aggregation to happen on the bricks.

The cafeteria is open on the Chiostro Dei Glicini and on an original bricks wall with three frescoes remains, two of which are covered with a protective glass frame. These two entrances are enhancing the connection between two different architecture styles and two different programs.

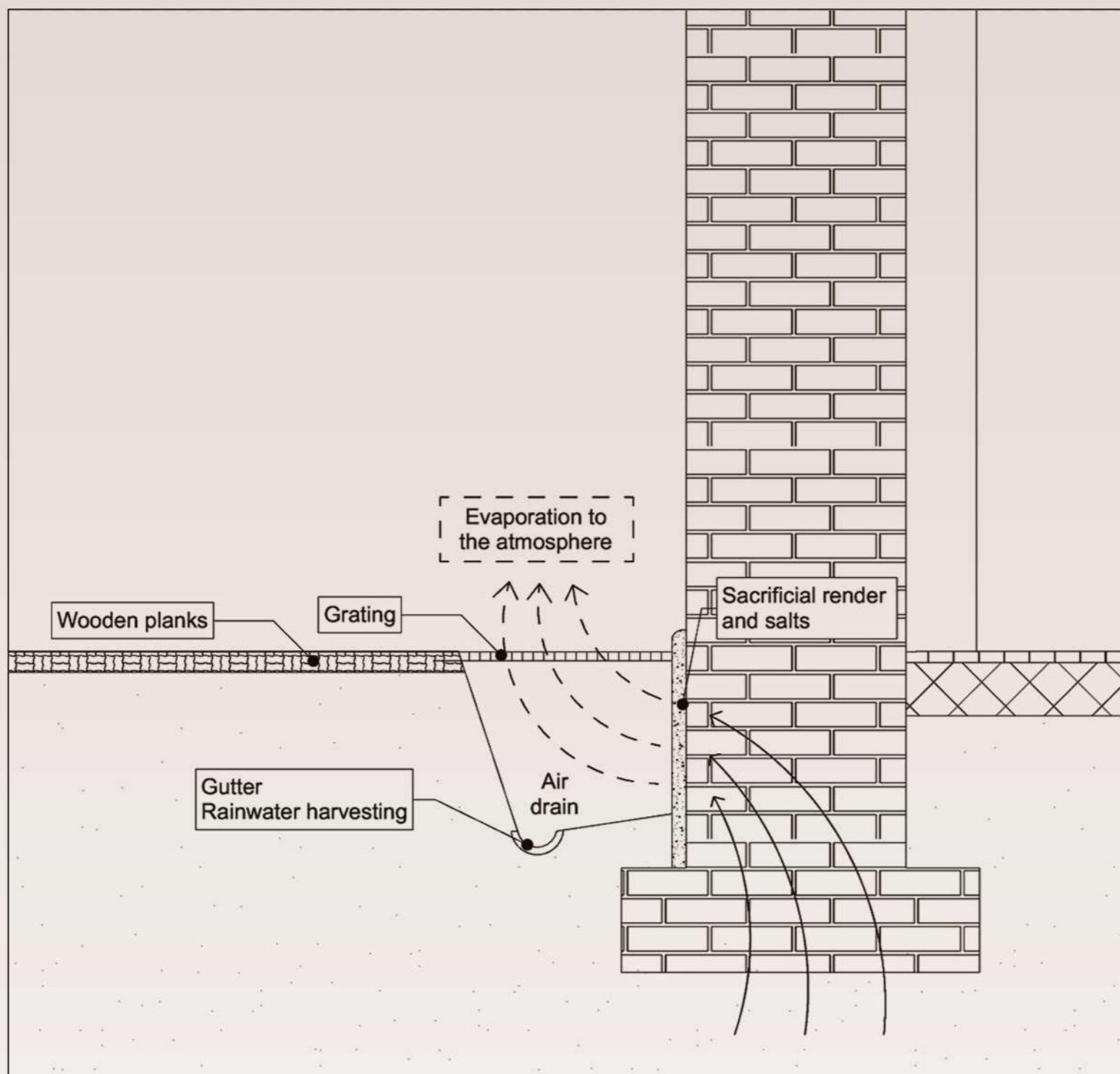
In front of the brick wall, the original structure visibility is increased by the creation of a seating around the existing tree. It is placed for cafeteria clients and Società Umanitaria visitors to discover and observe the 14th Century wall.



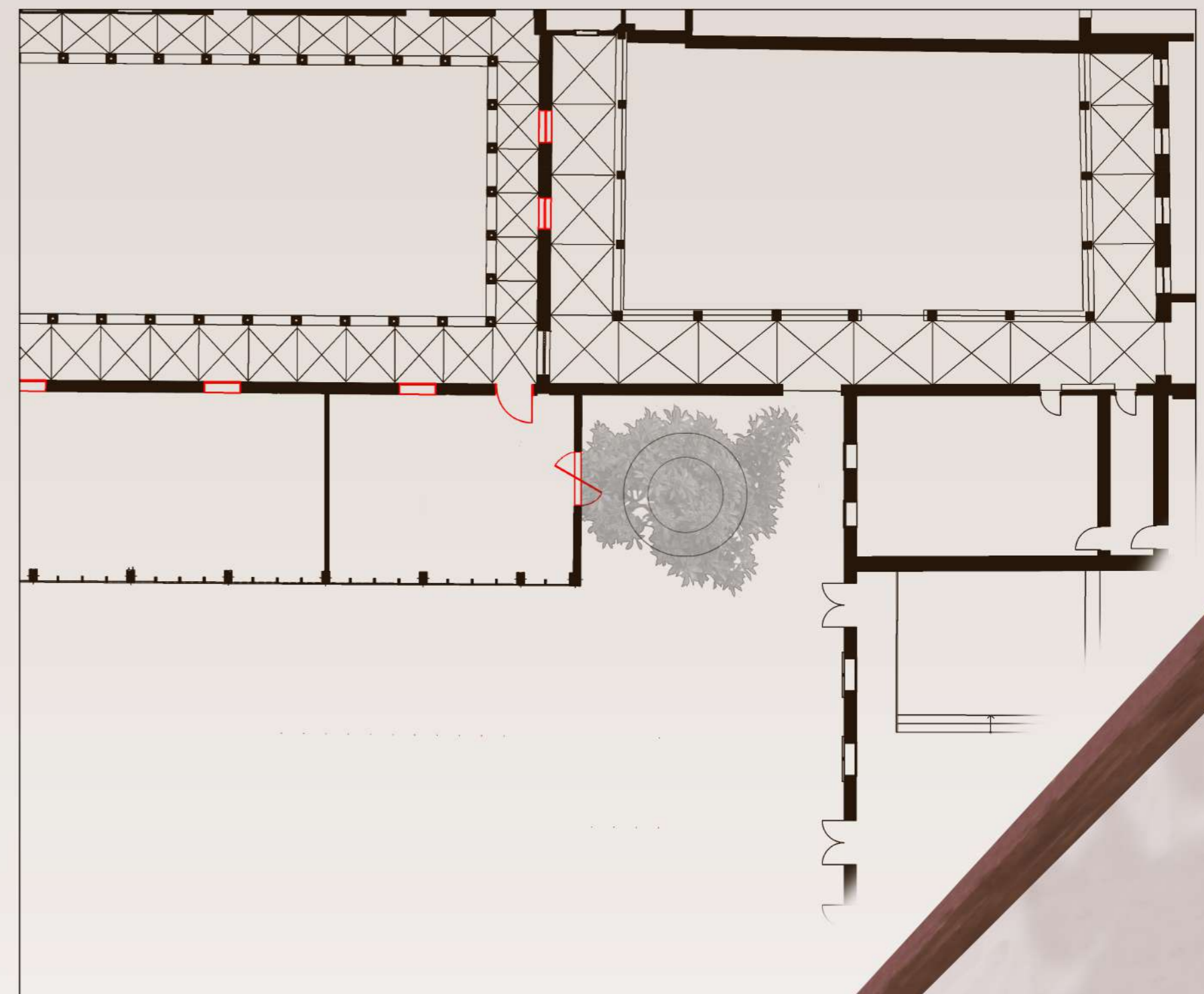
ORTHOPHOTO made by GR05
1/100



MATERIAL AND DECAY MAPPING made by GR05
1/100



INTERVENTION
1/10



INTERVENTION
1/200

