

VENTILLATED FACADE SYSTEM

DOUBLE ROOF SYSTEM

BIPV GLASS MODULES

NATURAL LIGHTING IN THE BUILDING

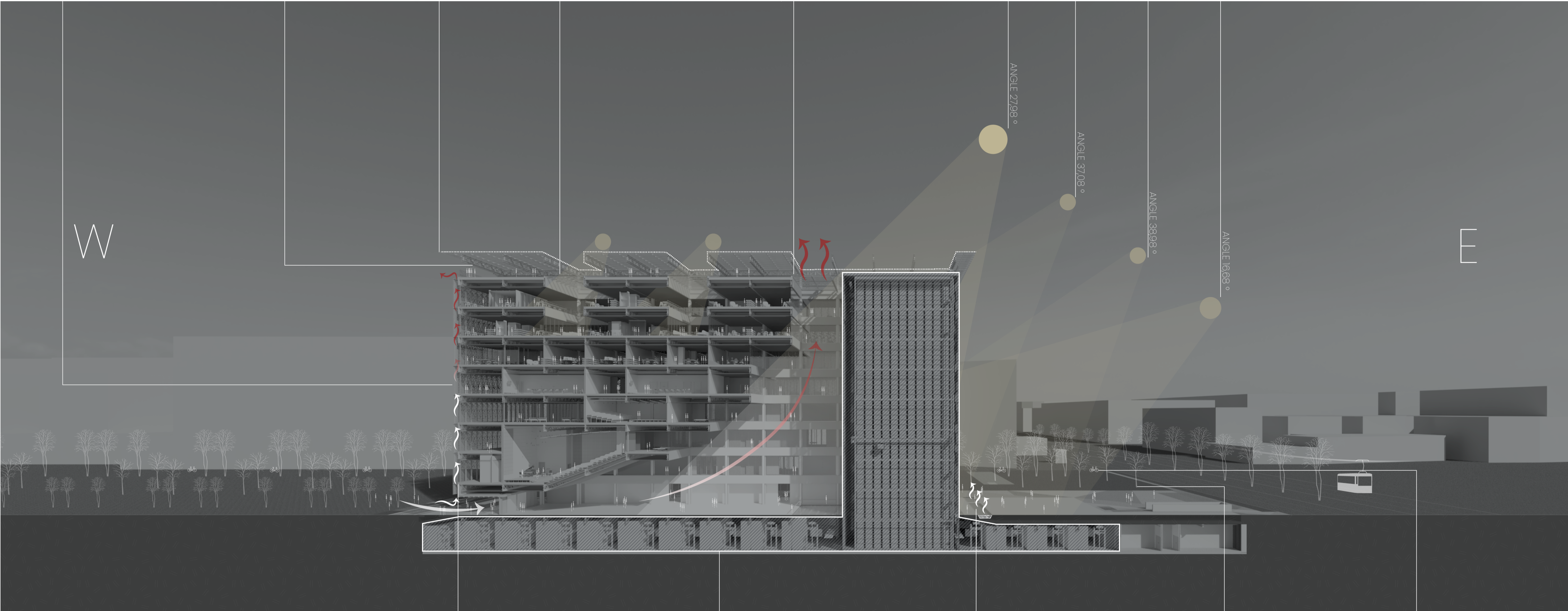
OPENABLE MODULES TO RECREATE CHIMNEY EFFECT

SUMMER SOLSTICE

SPRING EQUINOX

AUTUMN EQUINOX

WINTER SOLSTICE



UNDERGROUND RAINWATER TANK

FACADE ALUMINUM MESH "SKIN" AS AN EXTERIOR SUNSHADERS

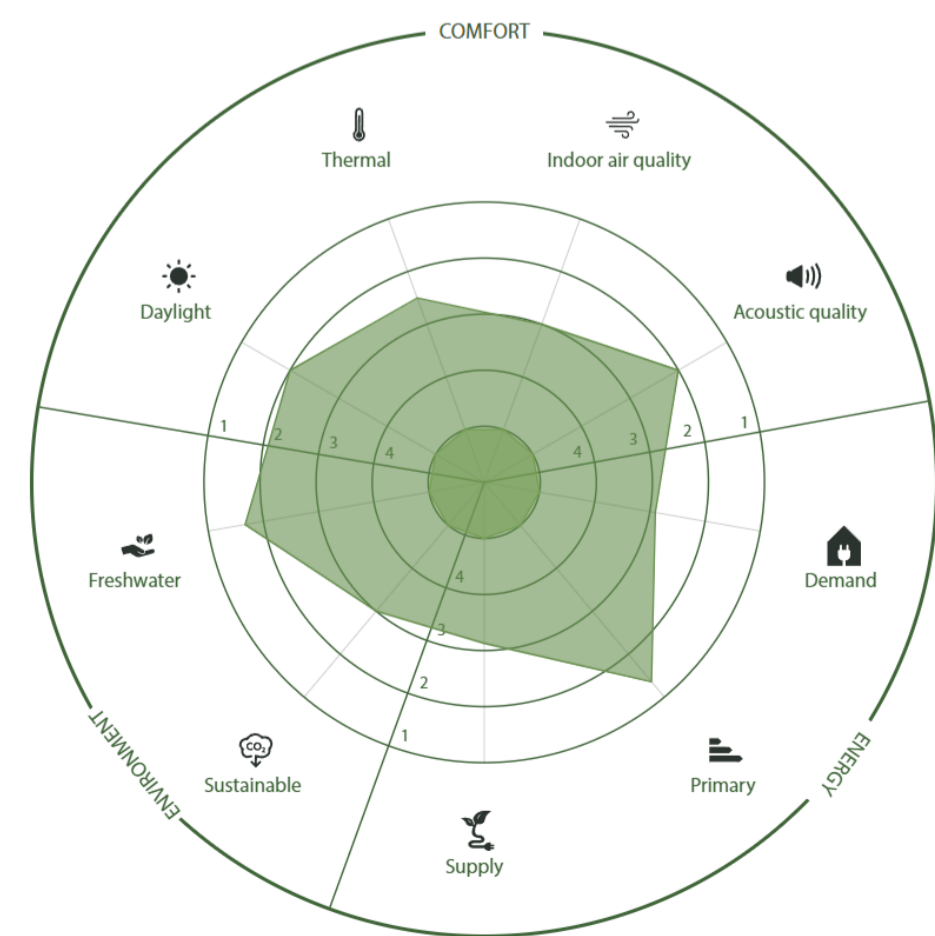
AIRTIGHT CLIMATE-CONTROLLED AUTOMATED BOOK STORAGE

POOL ALONG THE BUILDING PROVIDES COOL AIR

GREENERY REDUCE TRAFFIC NOISE

ENCOURAGING TO USE PUBLIC TRANSPORT

SUSTAINABILITY STRATEGIES

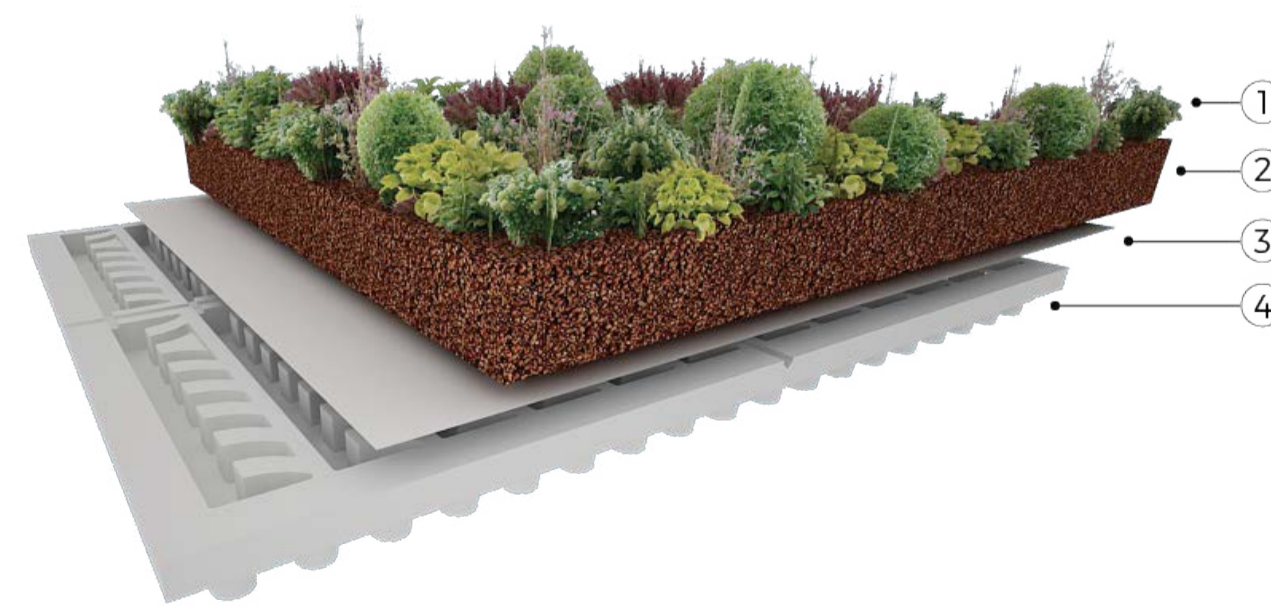


Scores

Mean active score	3.2
Daylight score	3
Thermal environment score	3.5
Indoor air quality score	3
Acoustic quality score	3
Energy demand score	3.8
Primary energy score	1.6
Energy supply score	3.5
Sustainable construction score	3.4
Freshwater score	4

ACTIVEHOUSE RADAR Level range: 1 (highest) to 4 (lowest). It is recommended to achieve the lowest level in each criteria.

SYSTEM CHOSEN: DAKU ITALIA EXTENSIVE PLUS

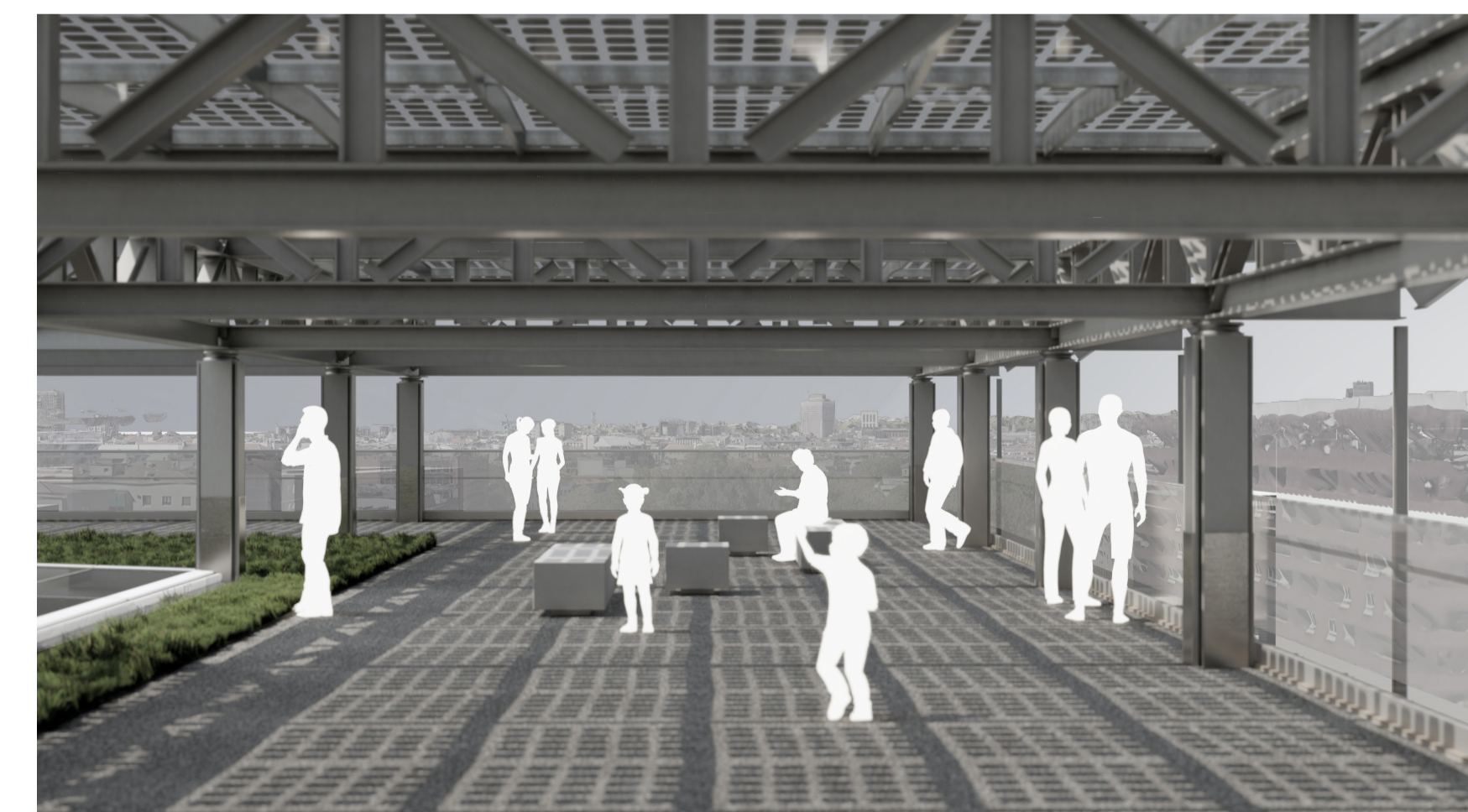


SYSTEM COMPONENTS

1. DAKU SEDUM (Mixture of Sedum and perennial grasses)
2. DAKU ROOF SOIL 2 (substrate, 10 cm thick)
3. DAKU STABILFILTER SFE (Filter)
4. DAKU FSD 20 (component for drainage and water storage)

ROOFTOP GREEN AREAS Extensive garden reducing thermal dispersion during the winter and the roof surface's temperature during the summer.

RENDERING - Panoramic Rooftop (Level 8)



23

Drawing 23
SUSTAINABILITY
Scale: n/a

TOWER OF BOOKS:
The New European Library of Information and Culture

Authors: Sude Rencber, Altynay Yermukhanova, Nikola Krsmanovic
Supervisor: Maria Grazia Folli
Academic Year: 2022-2023