

**A**

**CRYSTALLINE SILICON PV GLASS**

PRODUCER: **ONYX SOLAR**  
 LOCATION: **SPAIN**  
 COMPLIANCE: **ISO 9001:2005 (Quality Management) and the ISO 14001:2015 (Environmental Management)**

**B**

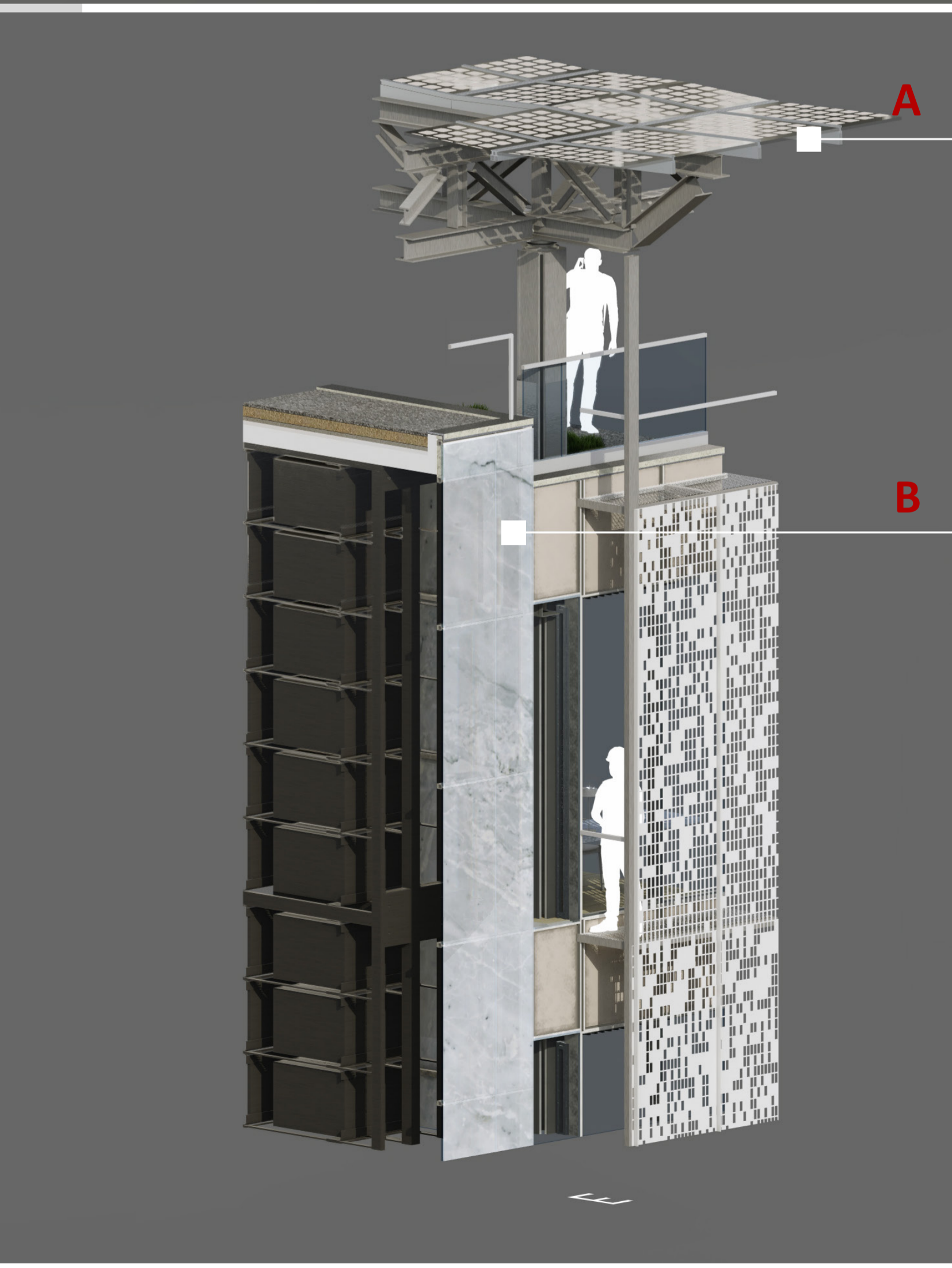
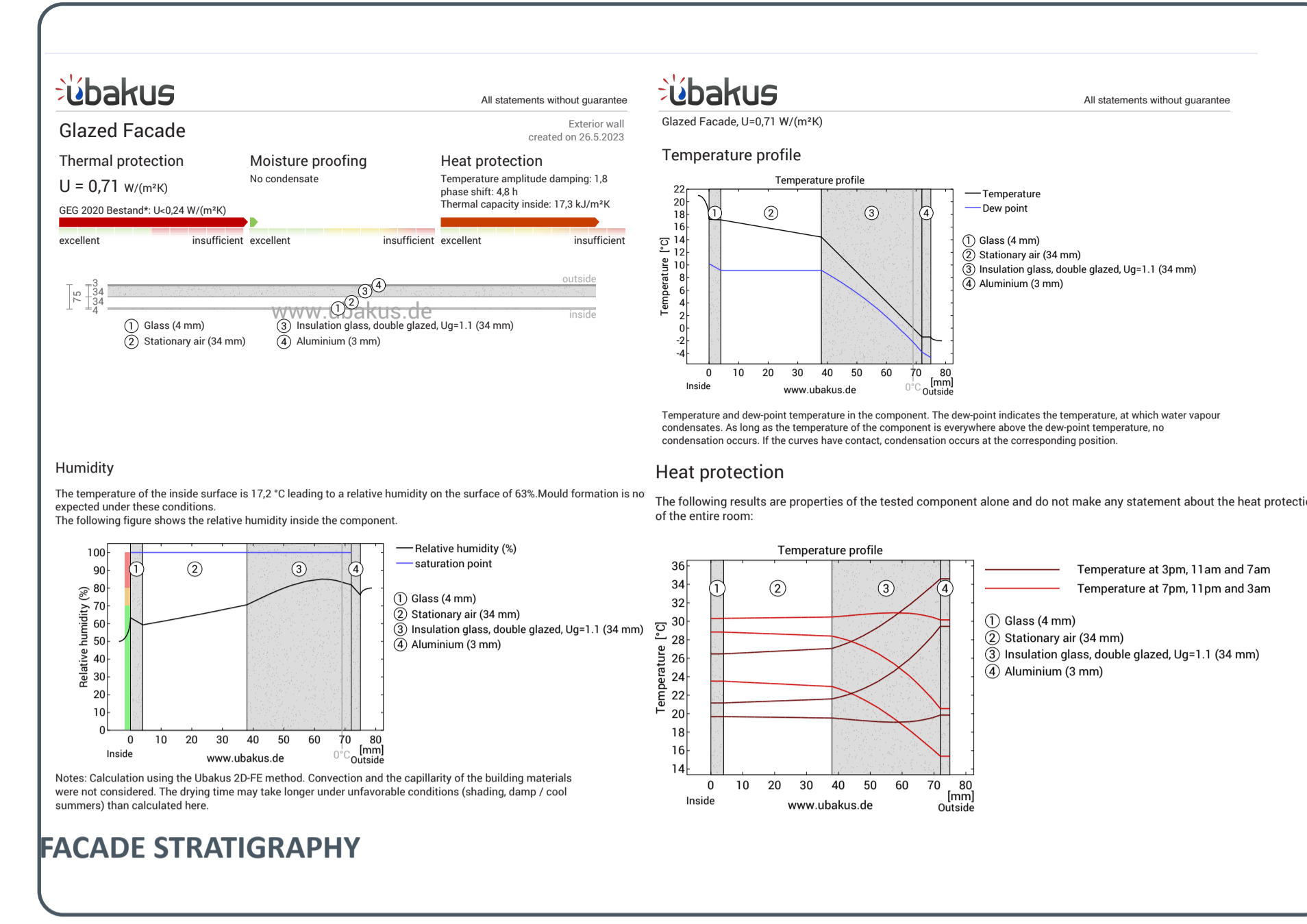
**BACKLIT MARBLE PANELS GLUED ON GLASS**

PRODUCER: **SACERDOTE MARMI**  
 LOCATION: **ITALY**  
 THICKNESS: **43mm total assembly**

**C**

**PERFORATED ALUMINIUM PANELS**

PRODUCER: **ITALMESH**  
 LOCATION: **ITALY**  
 COMPLIANCE: **ISO 9001**  
 THICKNESS: **3mm aluminium panel**



**D**

**FACADE SYSTEM FWS 50 SG.SI**

PRODUCER: **SCHÜCO**  
 LOCATION: **GERMANY**  
 COMPLIANCE: **ISO 9001 and ISO 14001**  
 THICKNESS: **50mm face width**  
 COMPATIBILITY: **Schüco AWS 114 window system**

**E**

**ESSENTIALS XXL 832 CARAMEL OAK LAMINATE FLOOR TILES**

PRODUCER: **TARKETT**  
 LOCATION: **GERMANY**  
 EPD NO: **S-P-01354**  
 THICKNESS: **8mm**  
 SIZE: **240x2033mm**

**F**

**ICÔNE BLEU NOIR PORCELAIN STONEWARE TILES**

PRODUCER: **ITALGRANITI**  
 LOCATION: **ITALY**  
 COMPLIANCE: **UNI EN 14411 ISO 13006 APP. G standards**  
 THICKNESS: **9mm**  
 SIZE: **1200x1200mm**

