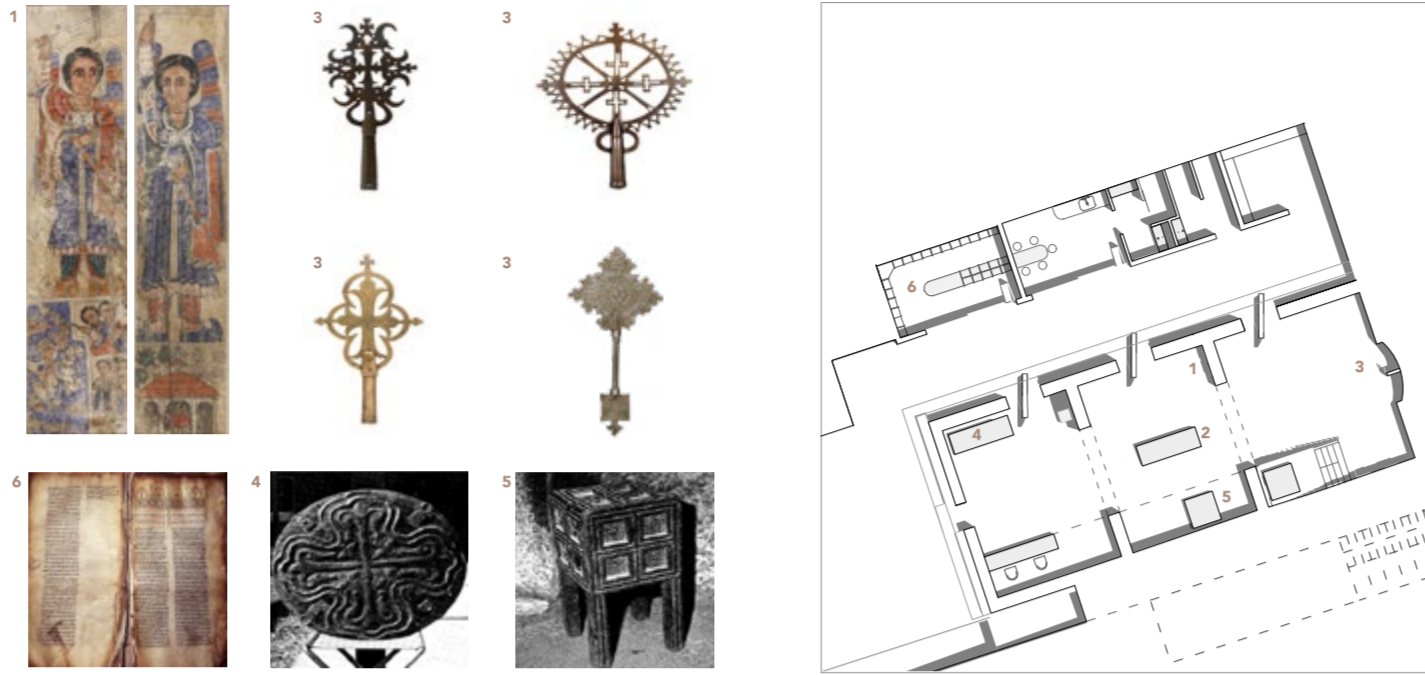


WELCOME EXHIBITION_ B1

The welcome building offers those unfamiliar with the site with additional information. It serves as a ticket office and a shelter for the removable antiquities which are often used for celebratory purposes during festivals. More recently important artefacts in Lalibela have been at risk of theft because of inadequate 'safe keeping' strategies. Offset from the core of the building is a service wing where additional storage and cloakrooms can be found.

HOUSING MOVABLE ANTIQUITIES



EXHIBITION OF WORK

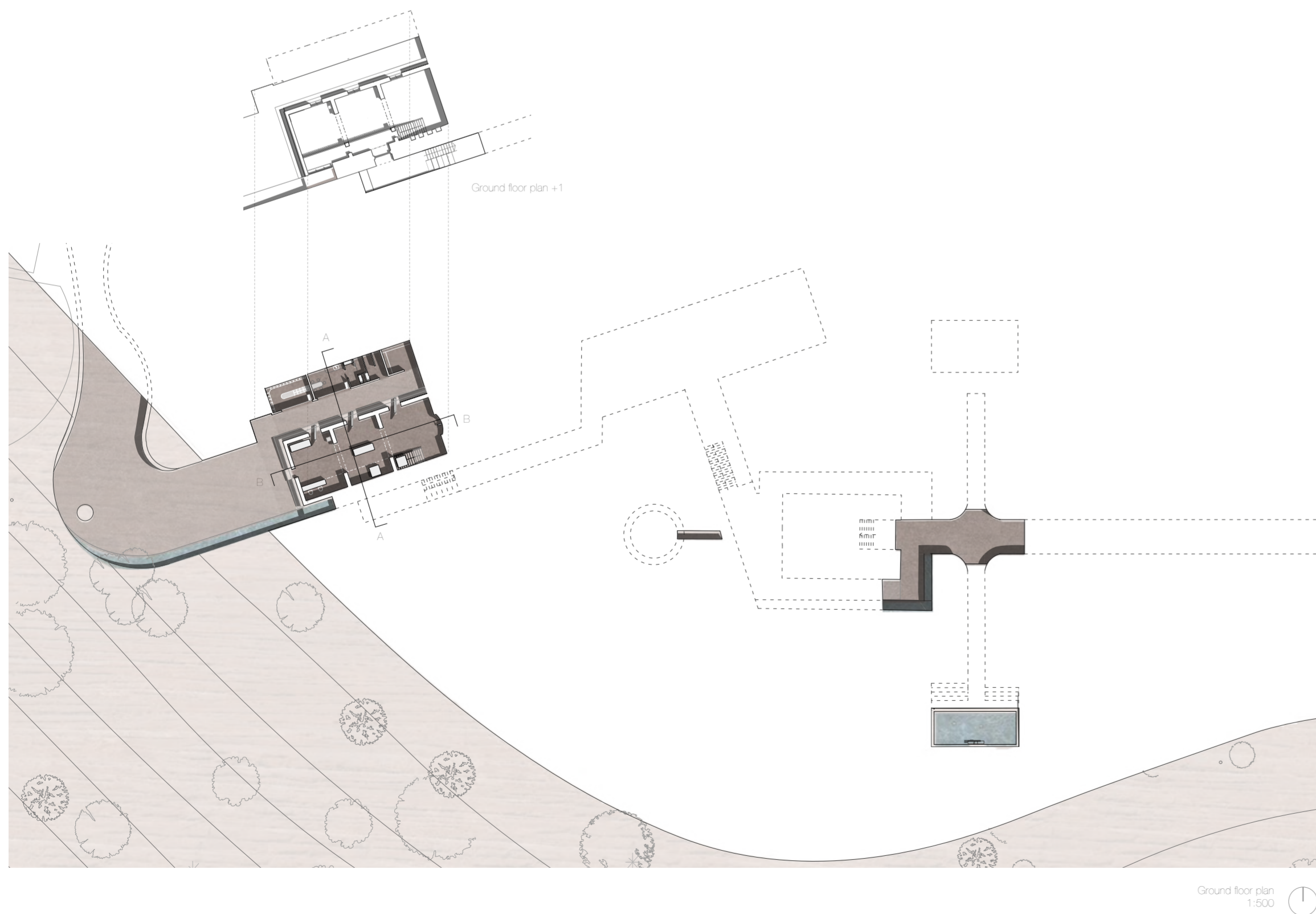
- | | | |
|---------------------------|-------------------------|----------------------|
| Processional hand crosses | scrolls and manuscripts | Turbans |
| Bells | Crowns of Kings | Paintings |
| Chandeliers | Silver and wooden cross | Artworks |
| Robes | | Ceremonial umbrellas |



B1 Perspective elevation



Interior perspective short section A-A
1:100



Ground floor plan
1:500



Long perspective section B-B
1:100