

# ANTHROPOLOGICAL LANDSCAPE



Buildings



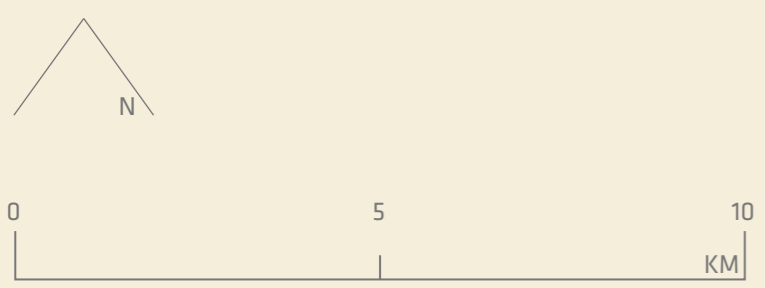
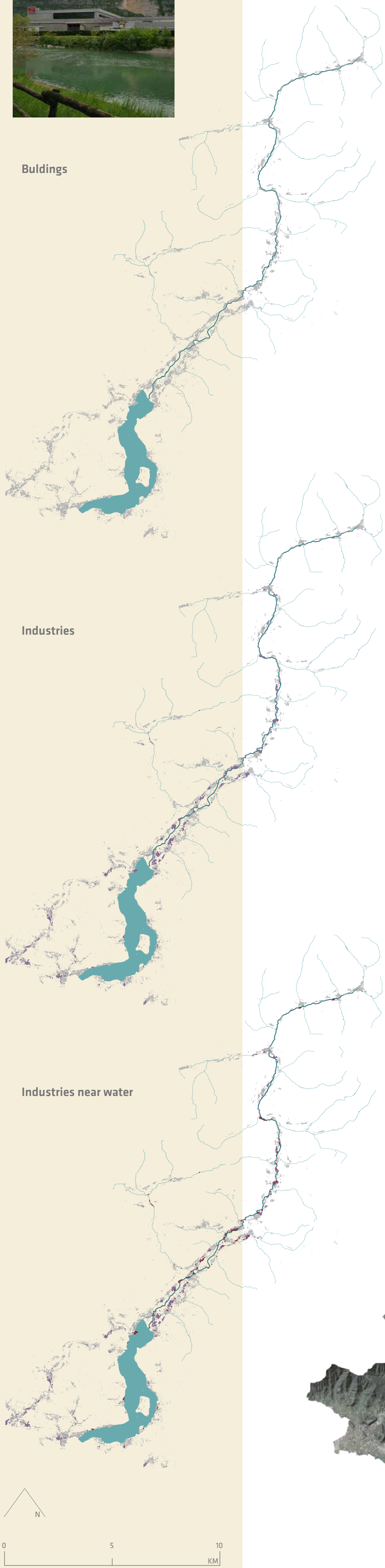
## BUILT

As you can see from the maps, the anthropized landscape develops mainly along the valley bottom and in the areas adjacent to the water streams (1). These urban agglomerations are divided into small villages that extend from Lake Iseo to the Passo del Tonale, at the foot of the Presena glacier. Over time, these small towns have developed industrial areas that have gradually expanded, reaching the River Oglio and its tributaries or, building immediately close to the water, as in the case of steelworks, very present in this area (2). Because of the use of water in steel processing, spills can occur, causing damage to the entire ecosystem. This problem will concern not only the Val Camonica, but all the land that the river Oglio will touch, until it flows into the Po (3).



## CONNECTIONS

As for the connections that from the main neighboring cities of Brescia, Bergamo and Milan you can notice large infrastructures that allow a considerable connection on both wheel and rail. Arriving on Lake Iseo these connections reduce considerably in size due to morphological and environmental issues, given that the countries remain well connected and each of them where the railway passes we find the respective stop. With regard to trafficking Brescia-Edolo in 2023 will come activated hydrogen trains which will help to diminish air pollution.



TAV. 3

FINAL EXAMINATION - SUSTAINABLE ARCHITECTURE AND LANDSCAPE DESIGN  
SUPERVISOR: PESSOA PEREIRA ALVES HENRIQUE  
STUDENT: CONTESSI NICOLA MAT. 926214

ACADEMIC YEAR 2020-2021