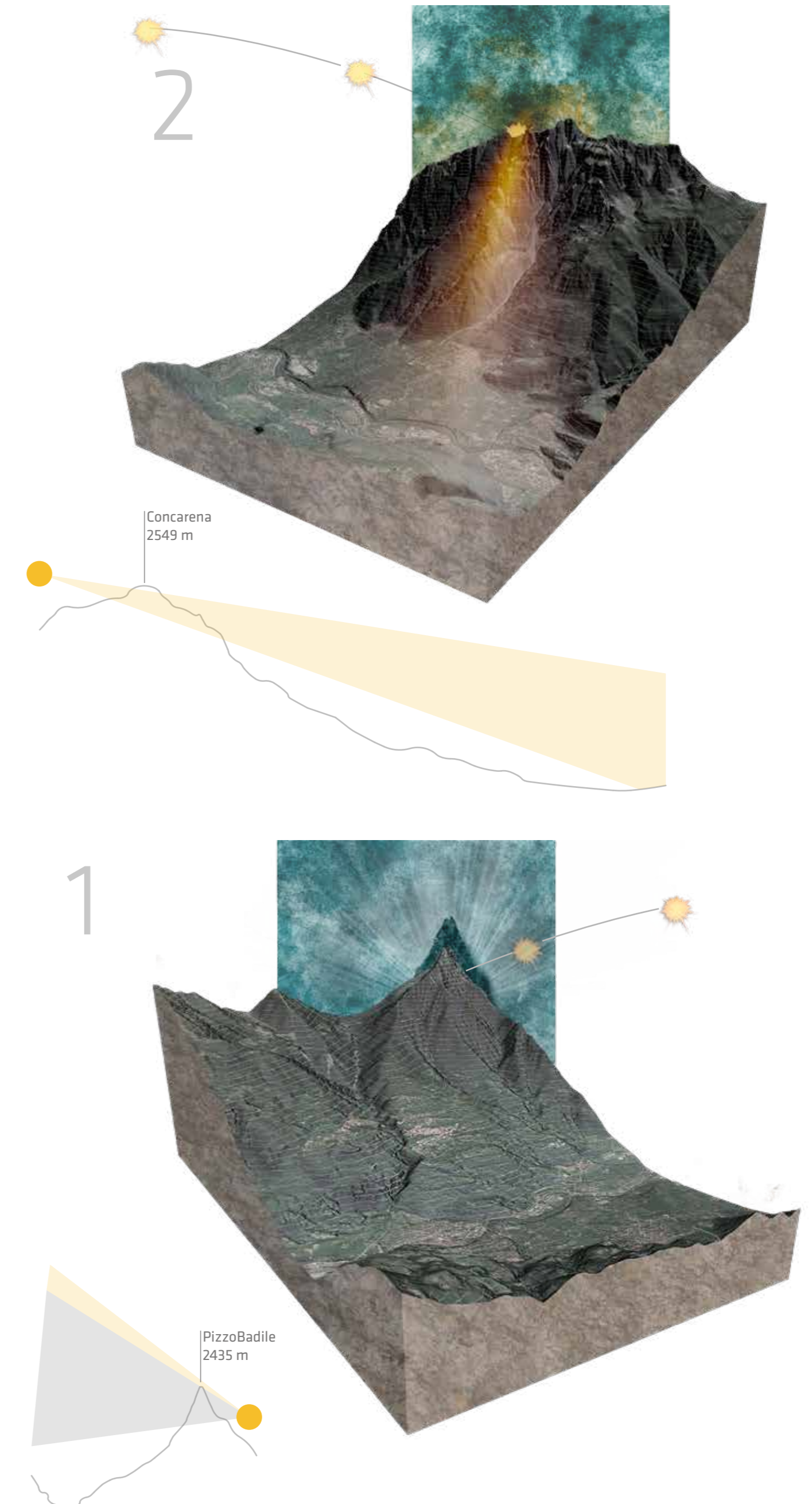
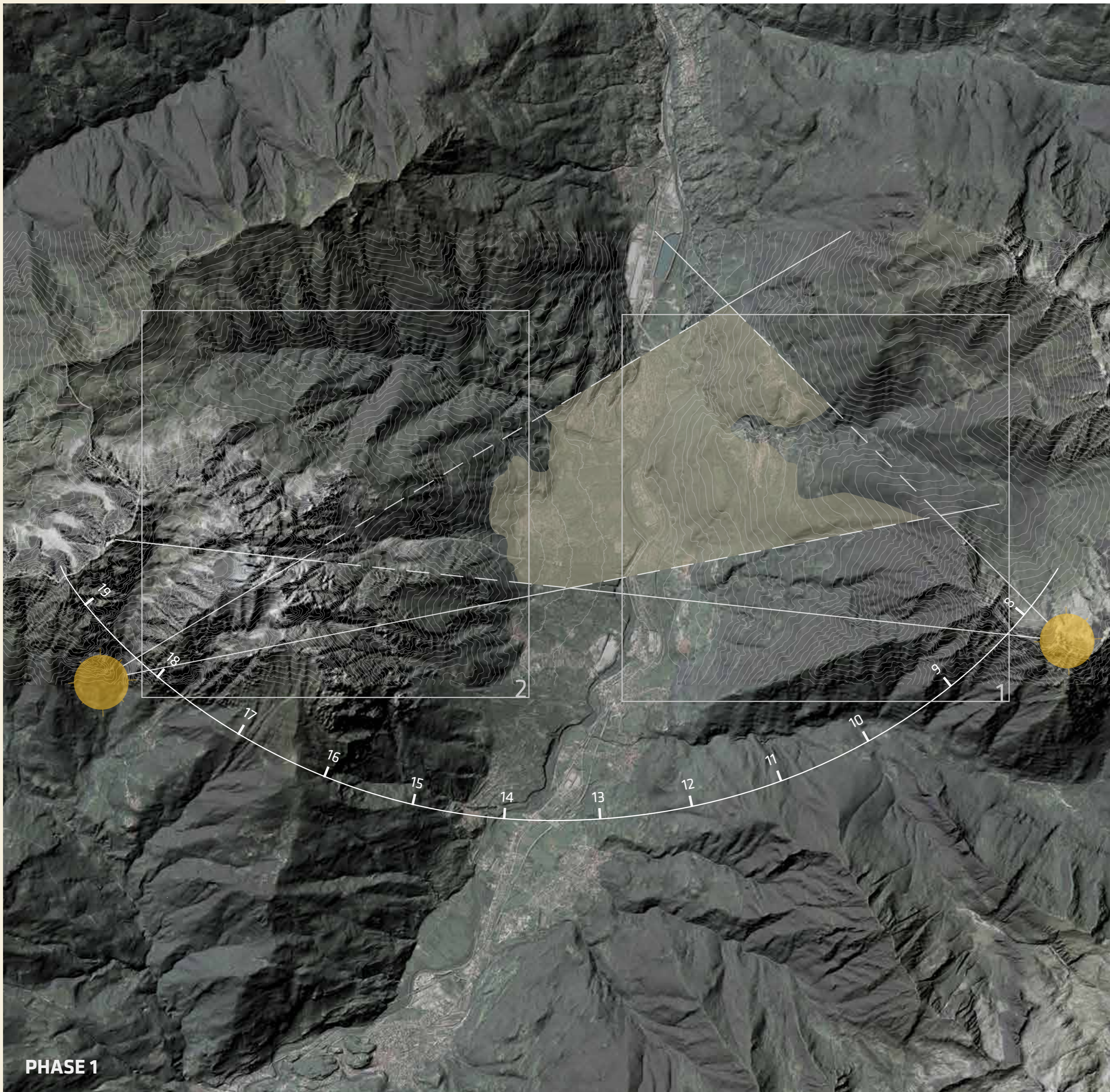


# AREA DETECTION



Nearest transtation



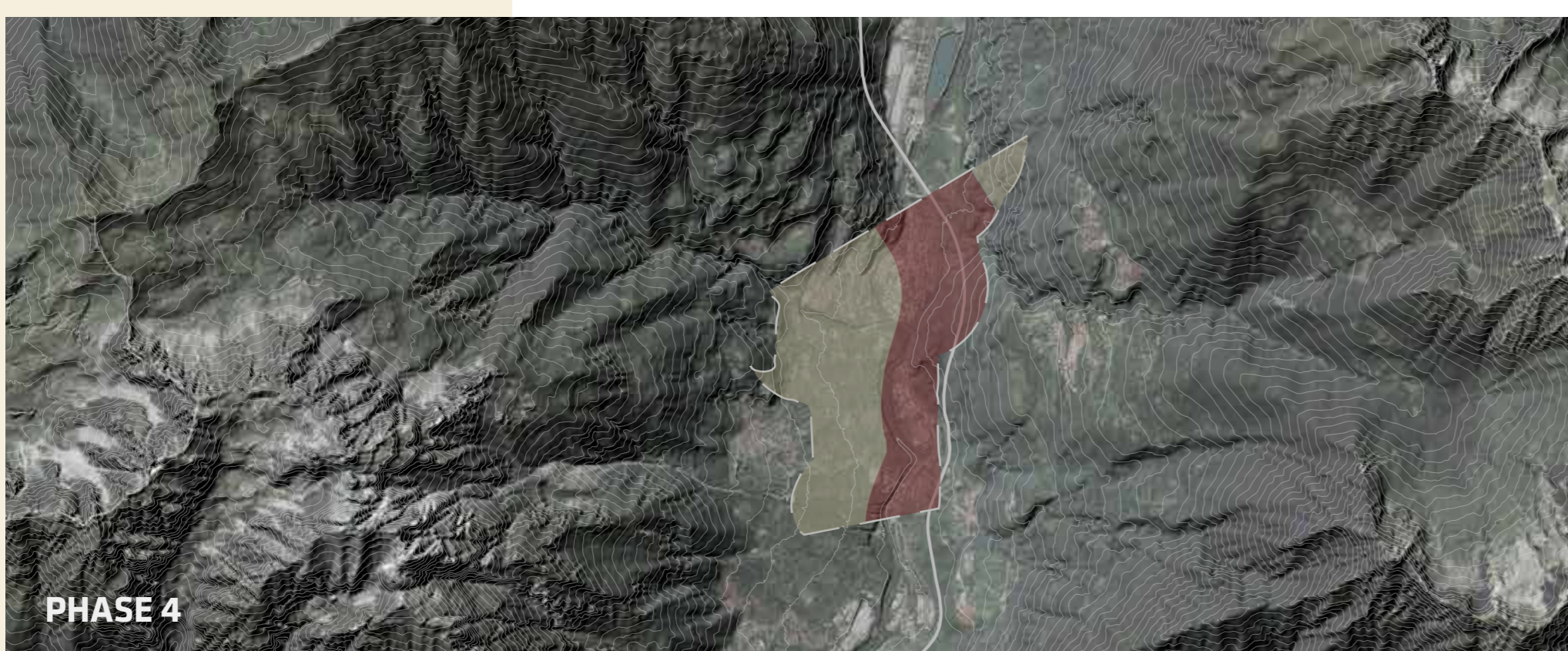
Train station in Capo di Ponte



Proximity to the cyclepath



Cycle path



Distance from the main road



SS 42

## HOW THE AREA IS DETECTED

Analyzing the area of the Val Camonica has decided the area adjacent to the village of Capo di Ponte to intervene in the project, creating a place where cyclists can stop and refresh. This area was chosen based on the presence of two mountains considered sacred by the ancient Camuni, the Pizzo Badile to the east and the Concarena to the west that, during the equinoxes create spectacular plays of light and shadow.

The identification work is divided into four phases:

**PHASE 1** - After having identified with the two optical cones the area affected by the light games during the equinoxes, some areas have been subtracted which, because of the course of the ground would not allow full sight;

**PHASE 2** - During this phase it has been identified the nearest railway station and tracing a radius of 4.5 kilometers it has gone to define an area that will allow rapid access for travelers who decide to arrive in Val Camonica using the train;

**PHASE 3** - With regard to the cycle path, a buffer area of 500 meters has been designed in which the project can be inserted, thus keeping it close to the passage;

**PHASE 4** - In the last phase we started from the identification of State Road 42, the main connection of the place, and also in this case a 'buffer area of 500 meters has been drawn which, however, will be removed from the selection to minimize the visual and noise pollution that cars and trucks would create during the passage.

