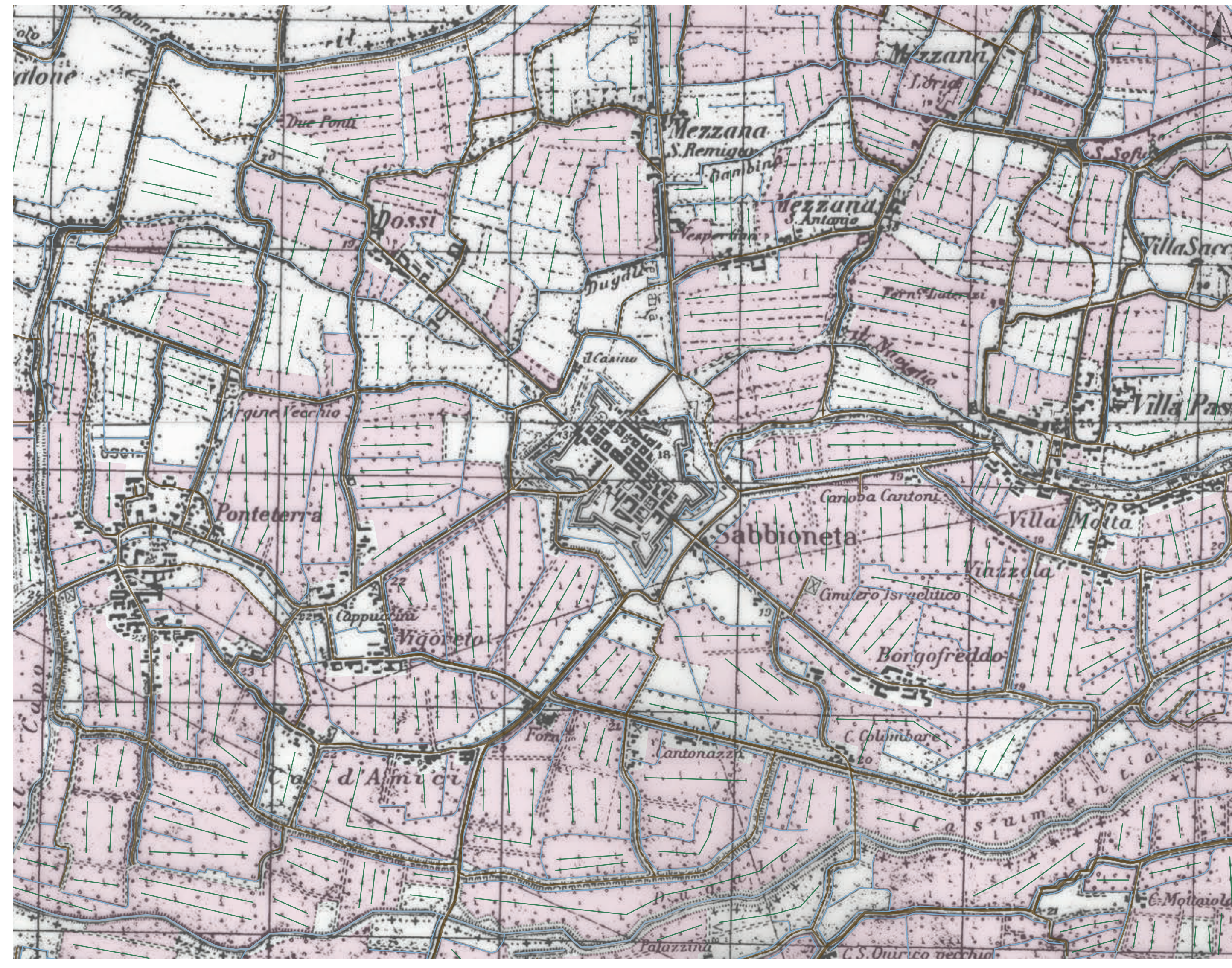







0 200 400 600 800 1000 1200 1400 1600 1800 2000 2200 2400 2600 2800 3000 mt



0 200 400 600 800 1000 1200 1400 1600 1800 2000 2200 2400 2600 2800 3000 mt

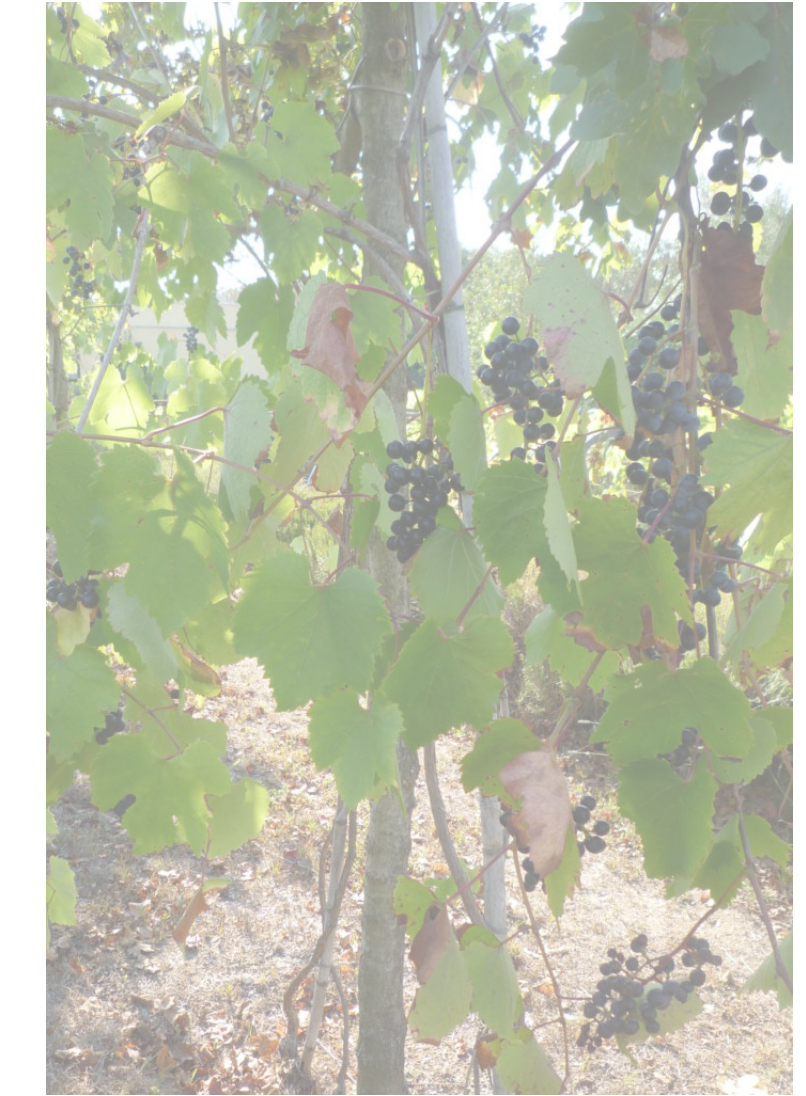
## PERMANENCY CHART

IGM 1885 and 1935

-  tree rows
-  vineyards
-  canals
-  waters
-  roads

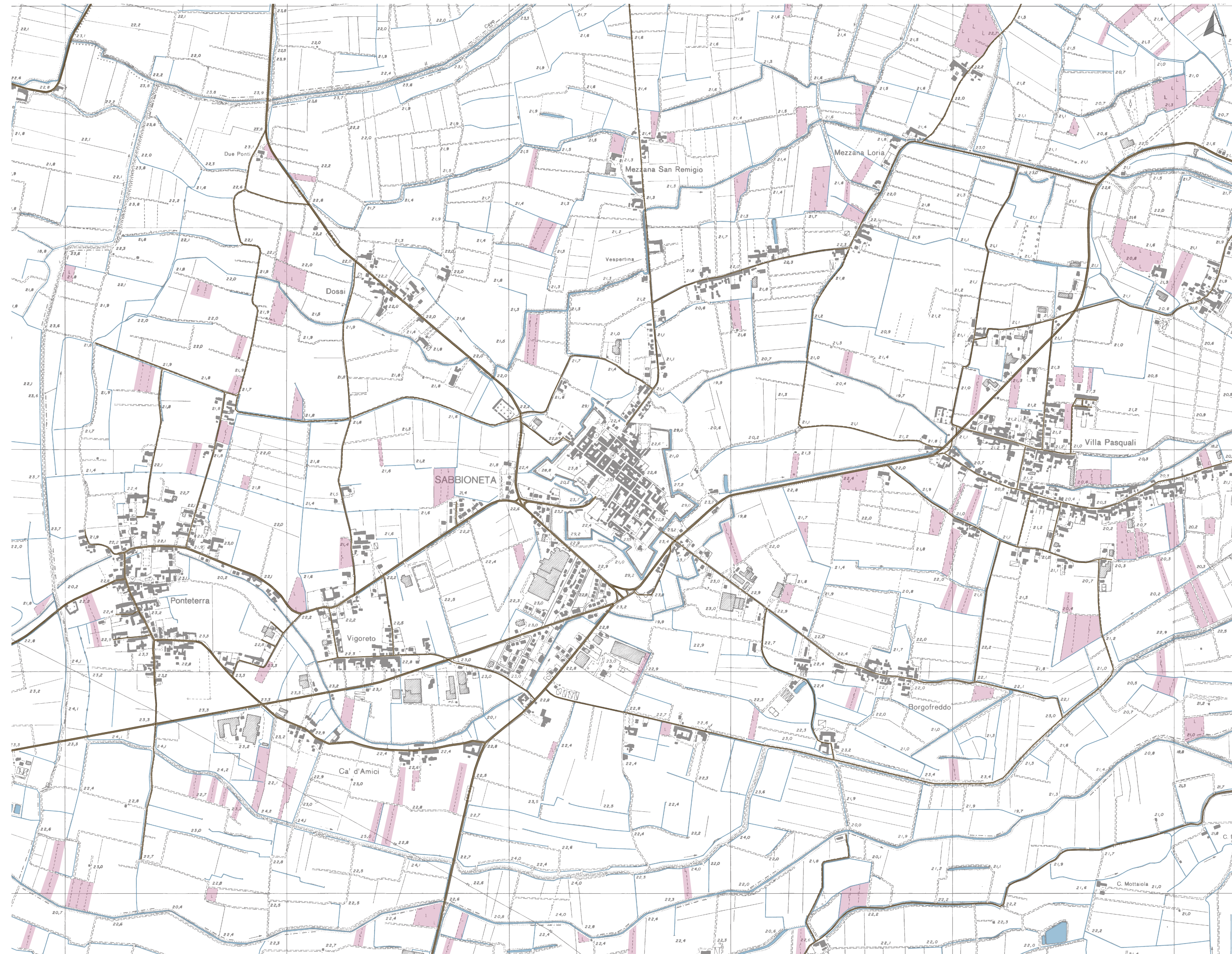


Traditional technique for the cultivation of the vineyard, also known as *vite maritata*: here the living supports upon which the vineyard grows is organized in tree rows

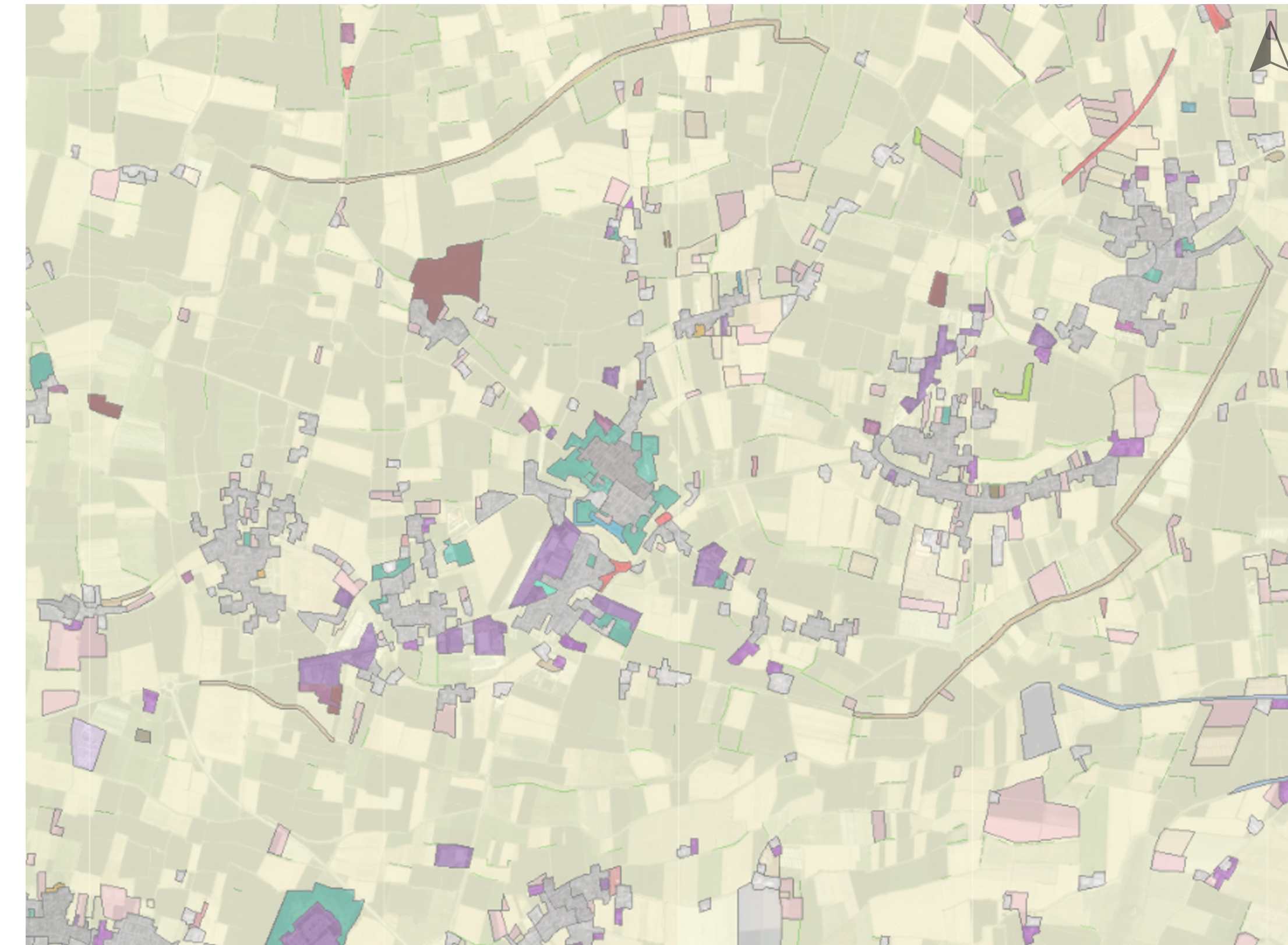


Example of the *vite maritata* technique: the vineyard grows upon living plants, such as the maple tree, the poplar or the mulberry

The landscape around Sabbioneta used to be of a very complex nature: it was characterized by a rich system of canals, useful for the irrigation of the lands. Lot of the arable land was used as vineyard, involving the traditional cultivation technique known as *vite maritata al sostegno vivo*, vineyard "married" to a living support. This living support was often a fruit tree, such as the mulberry, as to combine the production of wine with the production of silk.







0 200 400 600 800 1000 mt




Source: Geoportal Regione Lombardia. Uso e copertura del suolo 1999 (DUSAF 1.1)

0 200 400 600 800 1000 1200 1400 1600 1800 2000 2200 2400 2600 2800 3000 mt

CTR 1994

-  vineyards
-  canals
-  waters
-  roads

Land use and cover - DUSAF 1.1 (1999)

-  tree rows
-  vineyards
-  vegetable gardens
-  private vegetable gardens
-  poplar groves
-  parks and gardens
-  arable land
-  residential areas
-  industrial settlements

Nowadays, the Mantuan landscape and the rural landscape around Sabbioneta has drastically changed: since the fifties, the introduction of **modern cultivation techniques**, which guarantee a **faster productivity**, has taken control over the traditional one. Also the diffusion of **agricultural machines** has caused the simplification of the landscape in its structure: many tree rows have been cut down, as they were an obstacle to the machine work in the fields. There are much less vineyards, as the cultivation of vegetable and fruits now is done in a forced way, using glasshouses.



Modern technique for the cultivation of the grapefruit: the plant grows upon "doss" (supporti *celestegno morto*) made in wood or steel



The contemporary Mantuan landscape: a territory that has suffered lots of impoverishment on the landscape and esthetical point of view: the vineyards and the tree rows have disappeared because of the diffusion of agricultural machines



POLITECNICO DI MILANO  
Polo Territoriale di Mantova  
MoS in Architectural Design and History  
The rural landscape around Sabbioneta (MN), UNESCO heritage. Management and enhancement proposals.

Final project - Silvia Onori, 017.452  
Relatrice Prof.ssa Cazzani Alberta  
A.Y. 2020-2021

TAV\_08 Permanency chart