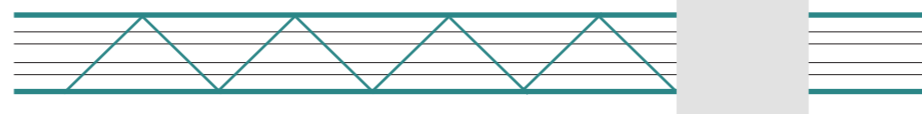




SALUT PARIS

CREEK GARDEN



Reviving abandoned railway

Reclaiming the urban voids

AUTHORS:
WEI LAN (913307)
LI YUJIAO (882576)
ZHOU YANYAN (904671)
CO-SUPERVISOR:
STEFANO STABILINI

2019-2020
ARCHITECTURE AND URBAN DESIGN
SUSTAINABLE ARCHITECTURE AND LANDSCAPE DESIGN

CHAPTER

CHAPTER 1
URBAN ANALYSIS

CHAPTER 2
STRATEGY

CHAPTER 3
MASTER PLAN

CHAPTER 4
ARCHITECTURE

CHAPTER 5
REDERINGS

ABSTRACT

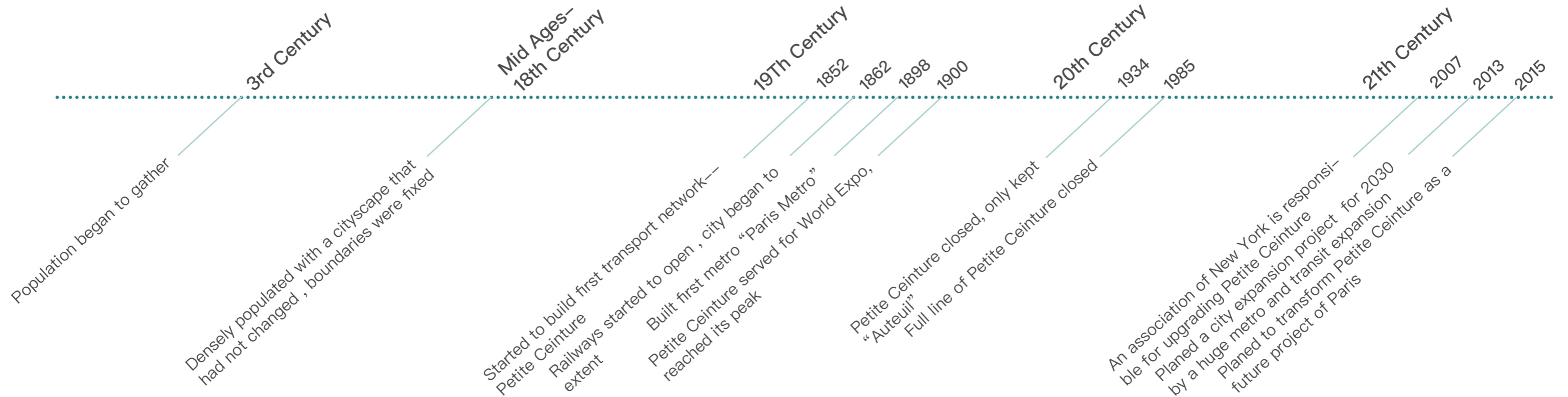
Established along one of the neglected platforms of the Petite Ceinture former Ornano station, the project will be one of a kind of project that not only reused the abandoned space of Petite Ceinture but also converted the patch into a community space for society development driven activities. It will include activities like urban agriculture, health workshop, pop-up stores, interactive kitchens and so on to develop circular economy and sustainable ecosystem.



CHAPTER 1
URBAN ANALYSIS



TIMELINE OF CITY DEVELOPMENT



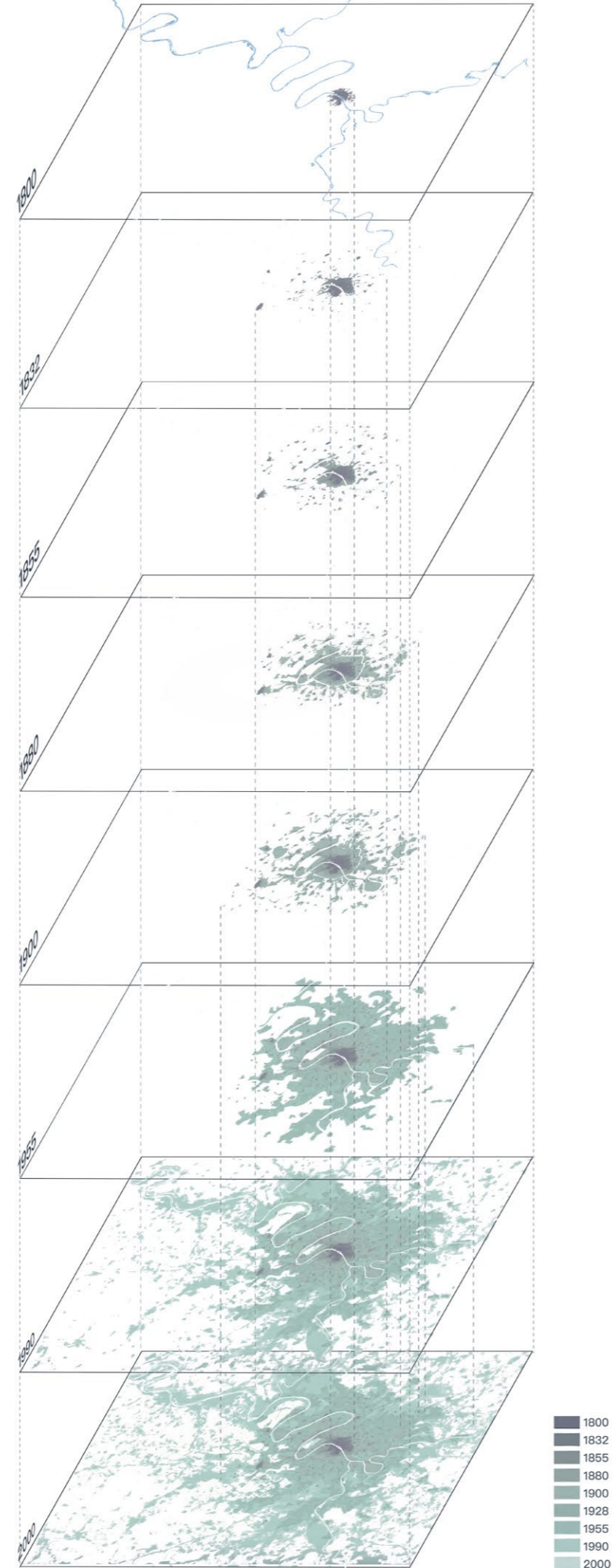
URBAN EXPANSION = TRANSPORTATION NETWORK EXPANSION

URBAN ANALYSIS

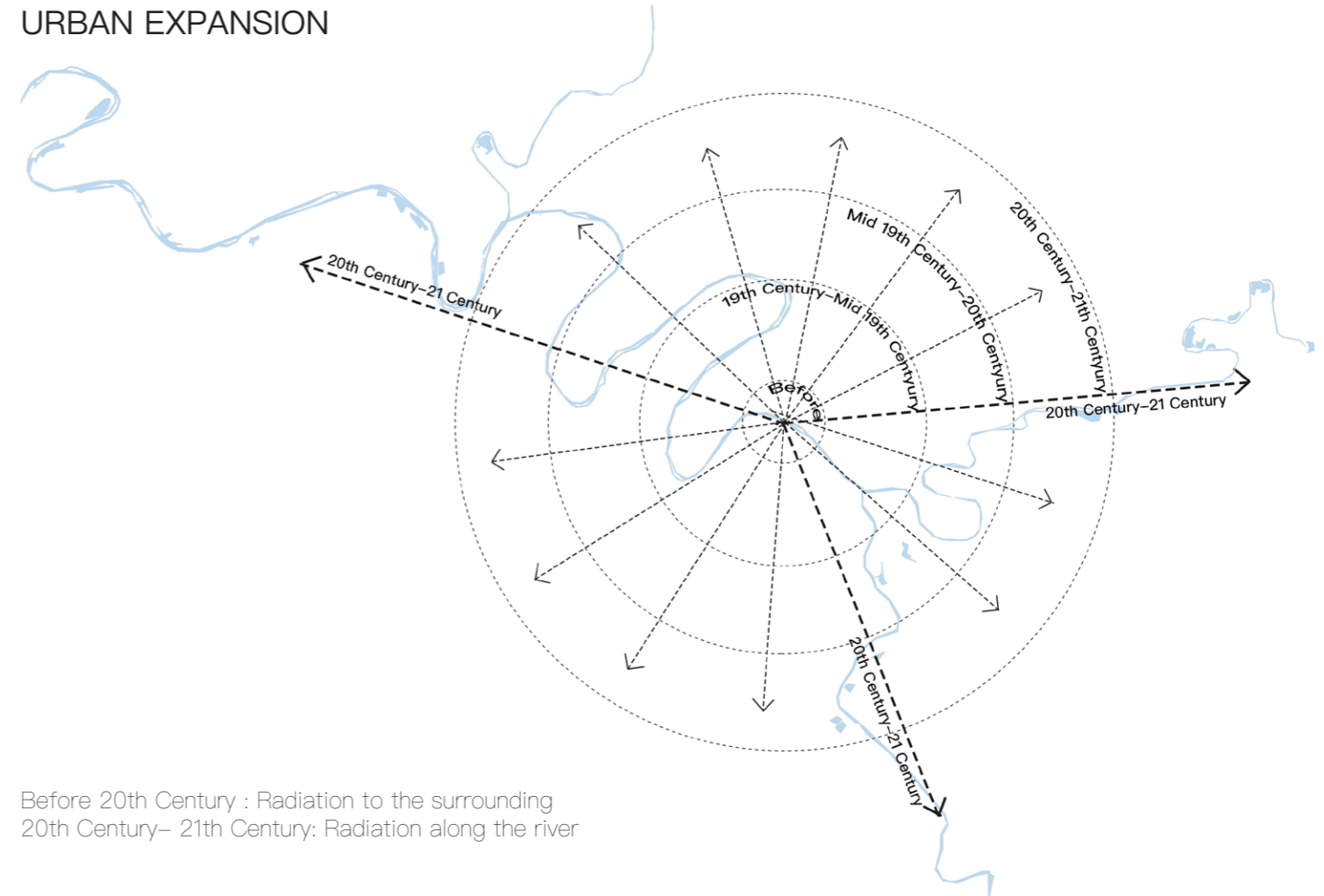
Paris—the oldest city featured in the visualizations. Distant pockets began to pop up beyond the old city as early as the 1830s, and the city center itself grew following Haussmann's renovations in the 1850s and 1860s. By the 1870s, a steady stream of growth began. The city's suburbs took off again after World War II, with a suburban boom in the 1950s and 1960s and a rapid expansion of the exurbs by the 1980s and 1990s.

Although the form of the city is constantly evolving, it always exhibits a circular distribution and radial development

URBAN EVOLUTION



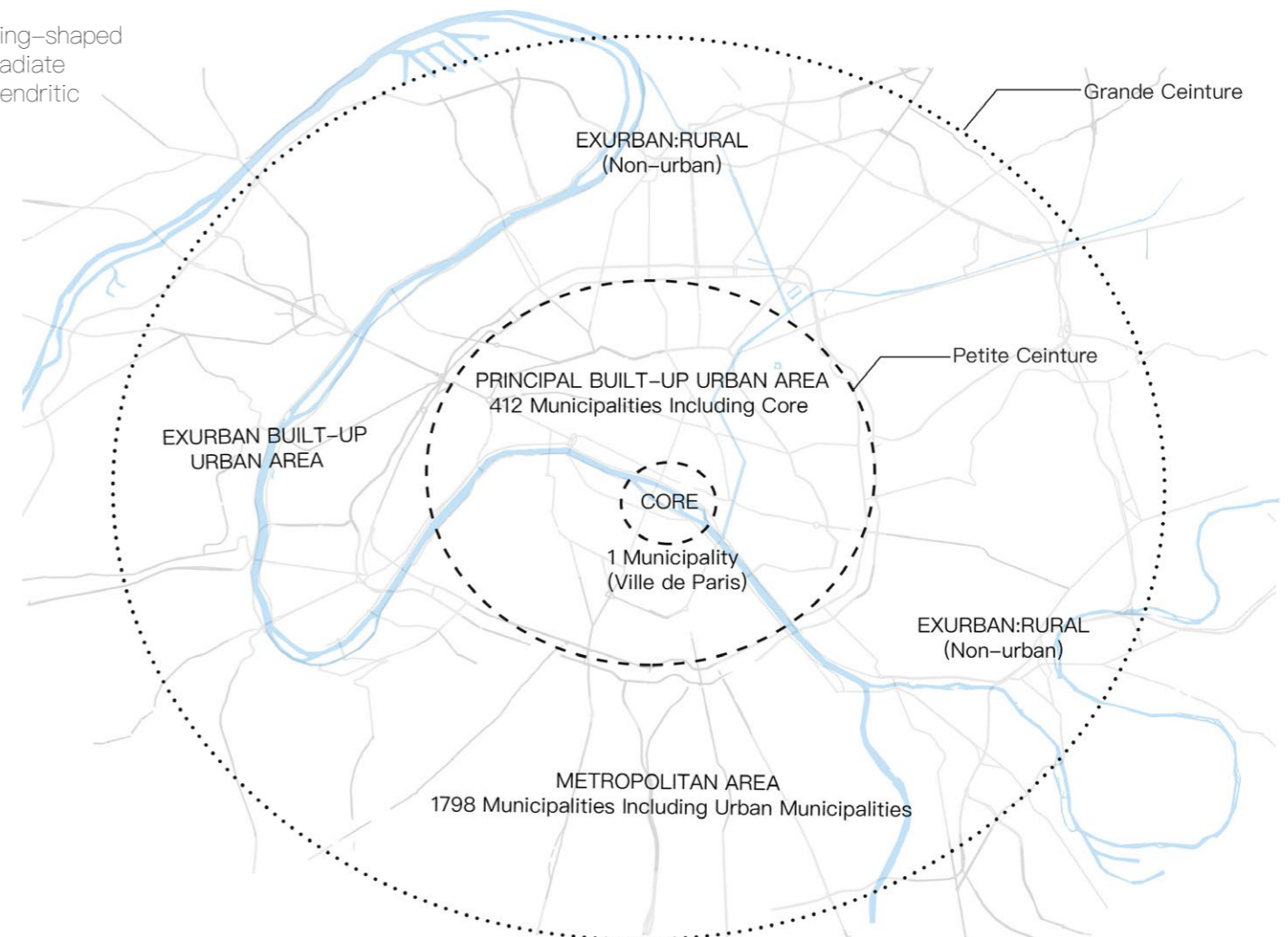
URBAN EXPANSION



Before 20th Century : Radiation to the surrounding
20th Century- 21st Century: Radiation along the river

URBAN FORM & DIMENSION

Ring-shaped
Radiate
Dendritic



TRANSPORTATION NETWORK ANALYSIS

DEVELOPING

1852-1854



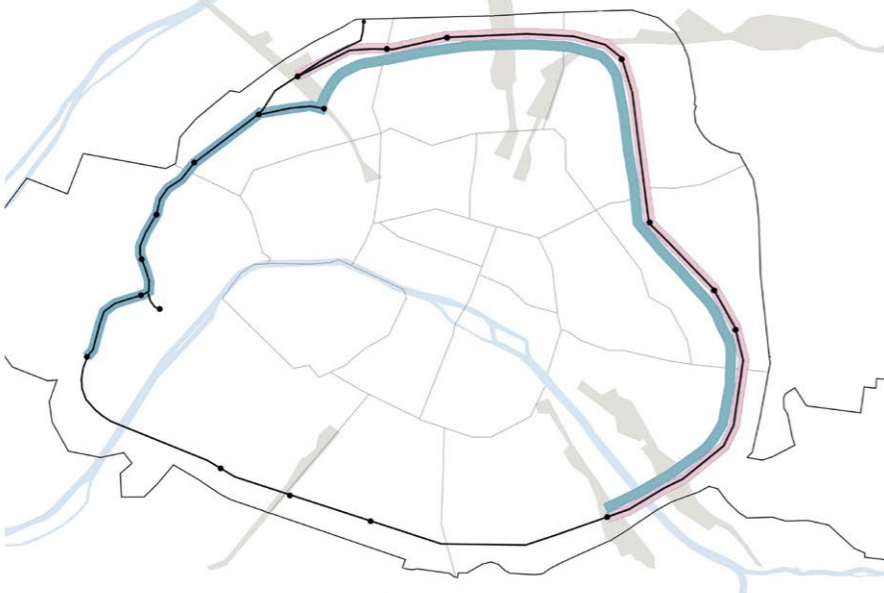
1854-1862



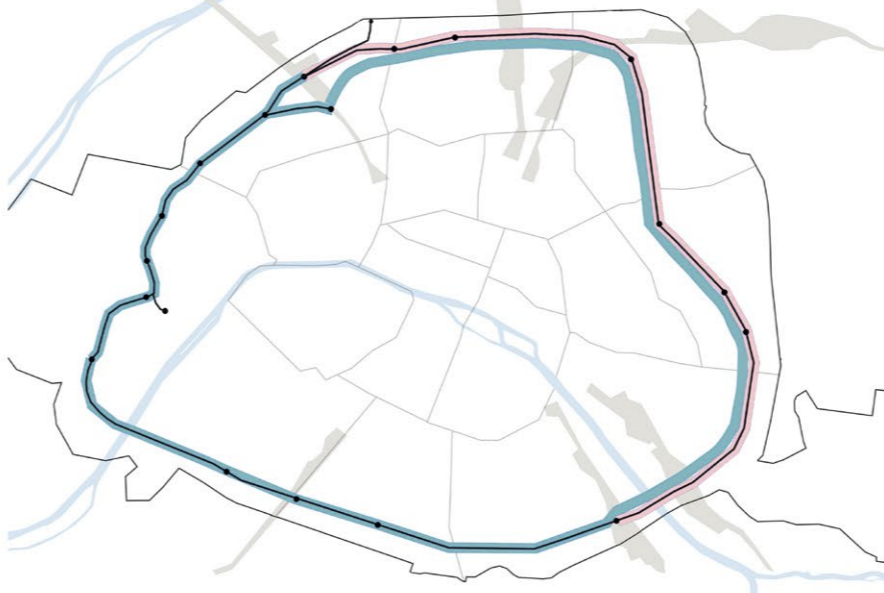
The railway network, known as Petite Ceinture, initially made for transporting goods, functioned for over 70 years, making a tremendous impact on the development of industry during this course.

DEVELOPING

1862-1869



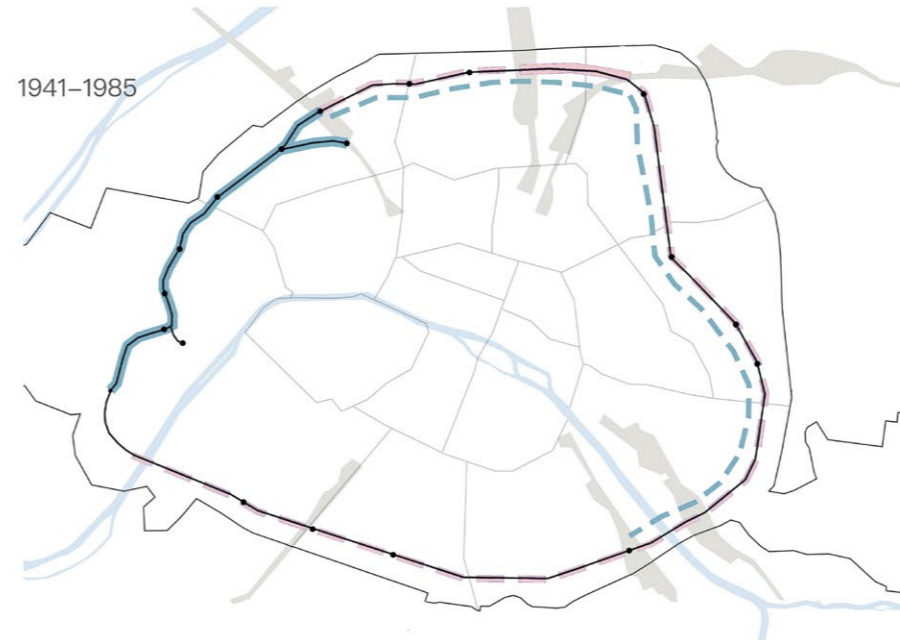
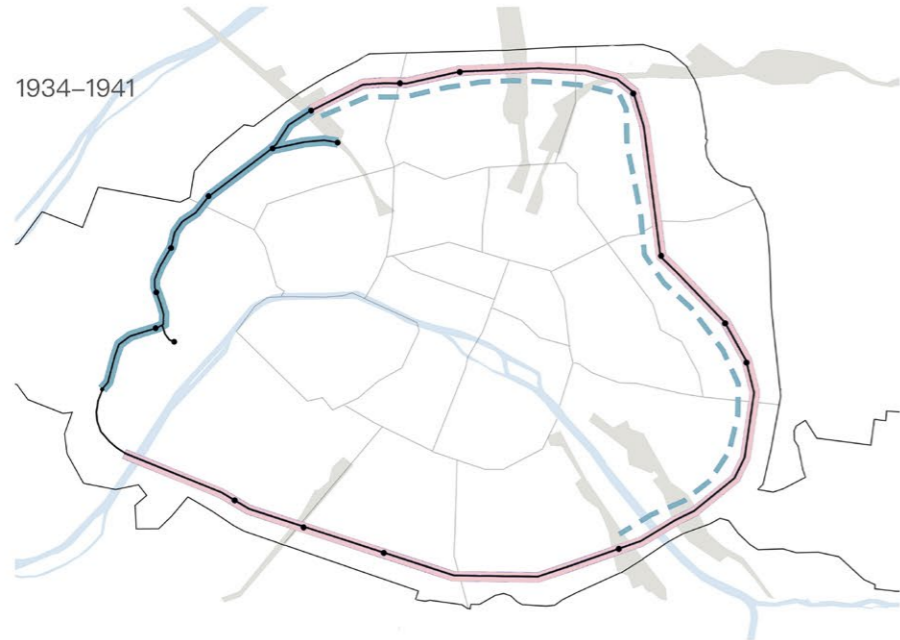
1869-1934



- Regular cargo freight
- Intermittent cargo freight
- Regular passenger transport
- Intermittent passenger transport

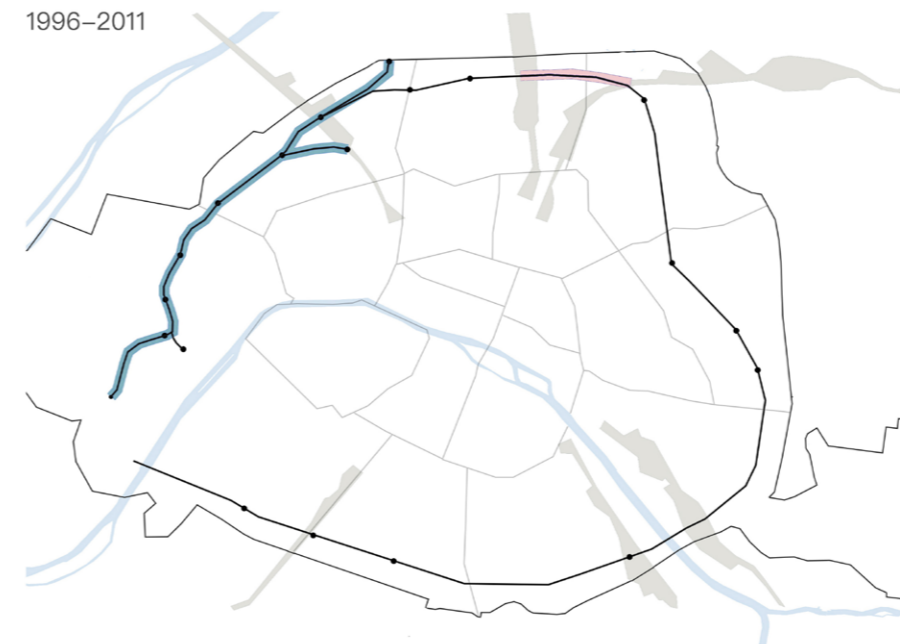
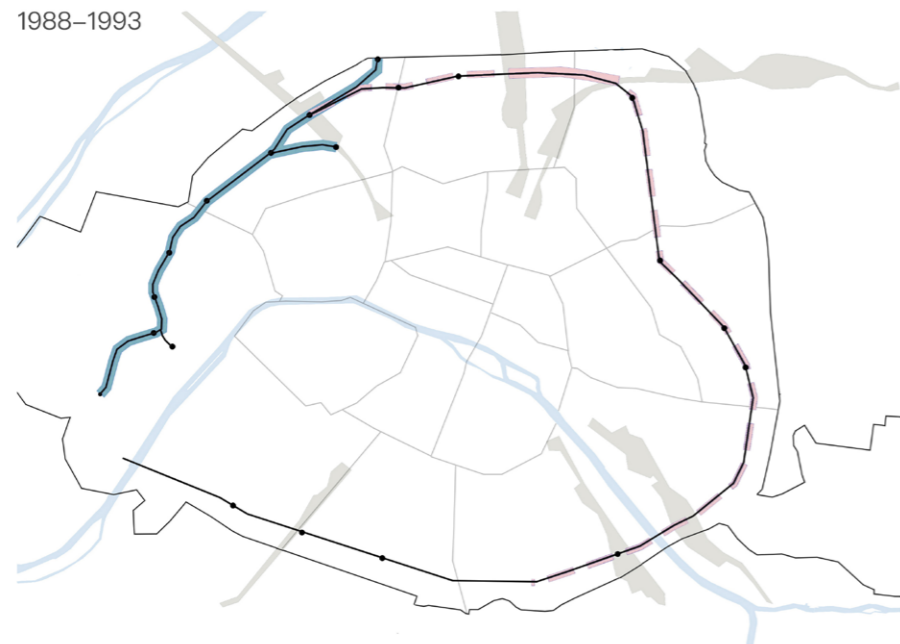
TRANSPORTATION NETWORK ANALYSIS

DECLINING



However, during the overlap of a better transportation network, the existing railway line Petite Ceinture encircling the city became defunct as people opted for a faster option, and by the year 1934 it was officially shut. It turned the railway line space and stations into urban voids, hence, they became an eyesore, until the people and the government started intervening to repurpose them.

DECLINING



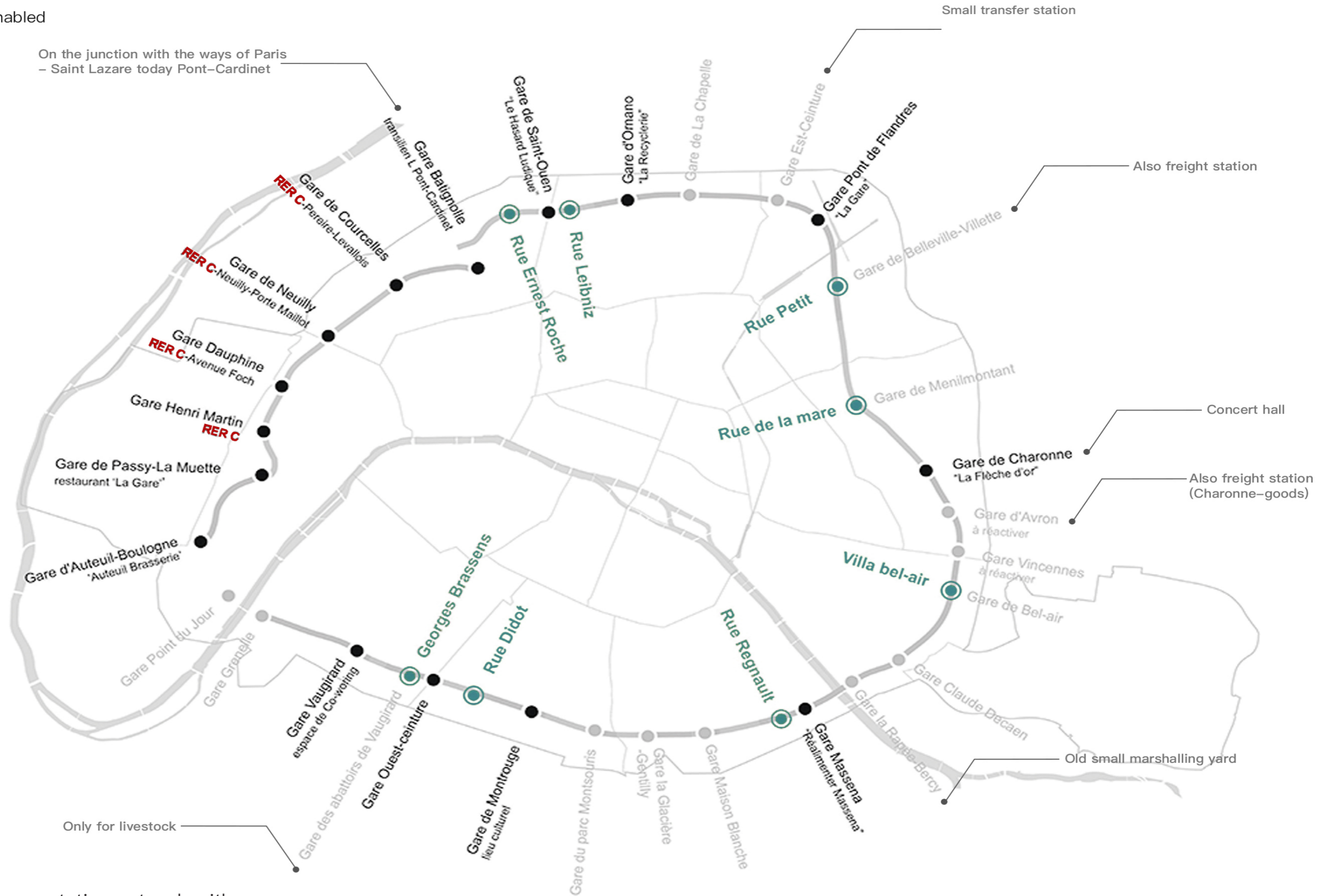
— Regular cargo freight
- - Intermittent cargo freight

— Regular passenger transport
- - Intermittent passenger transport

RAILWAY ANALYSIS

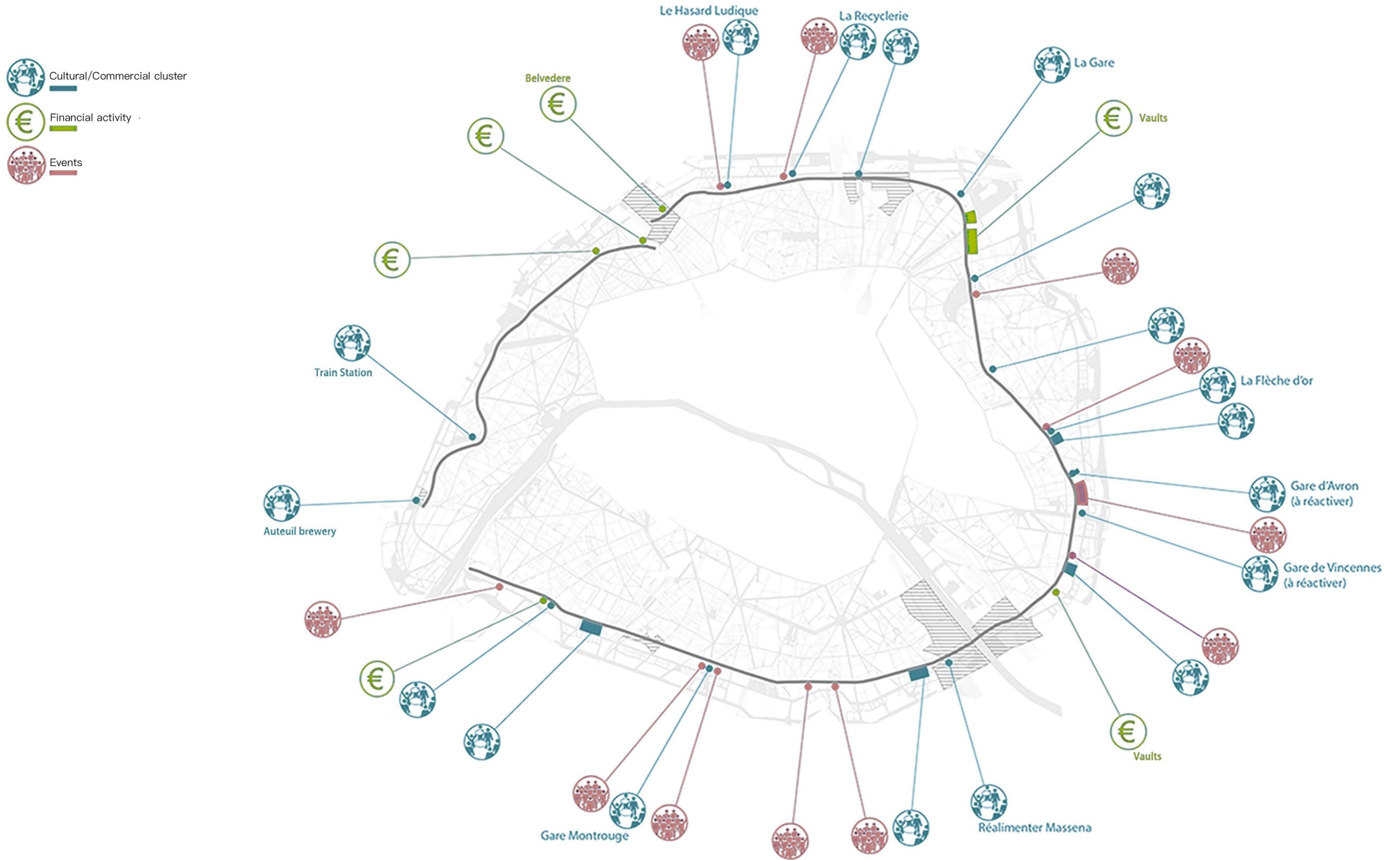
Stations

- Existing stations
- Stations to be created
- Stations waiting to be re-enabled



The railway has a circular transportation network with many stations of different transportation ways. They are in different developing stages.

Social activity,Economic activity



Along the railway,there are many social activities and economic activities.Some of them need to be revived.

Green Continuity, Nature & Heritage, urban Agriculture

Nature and heritage

Walk, Sports, Explore heritages

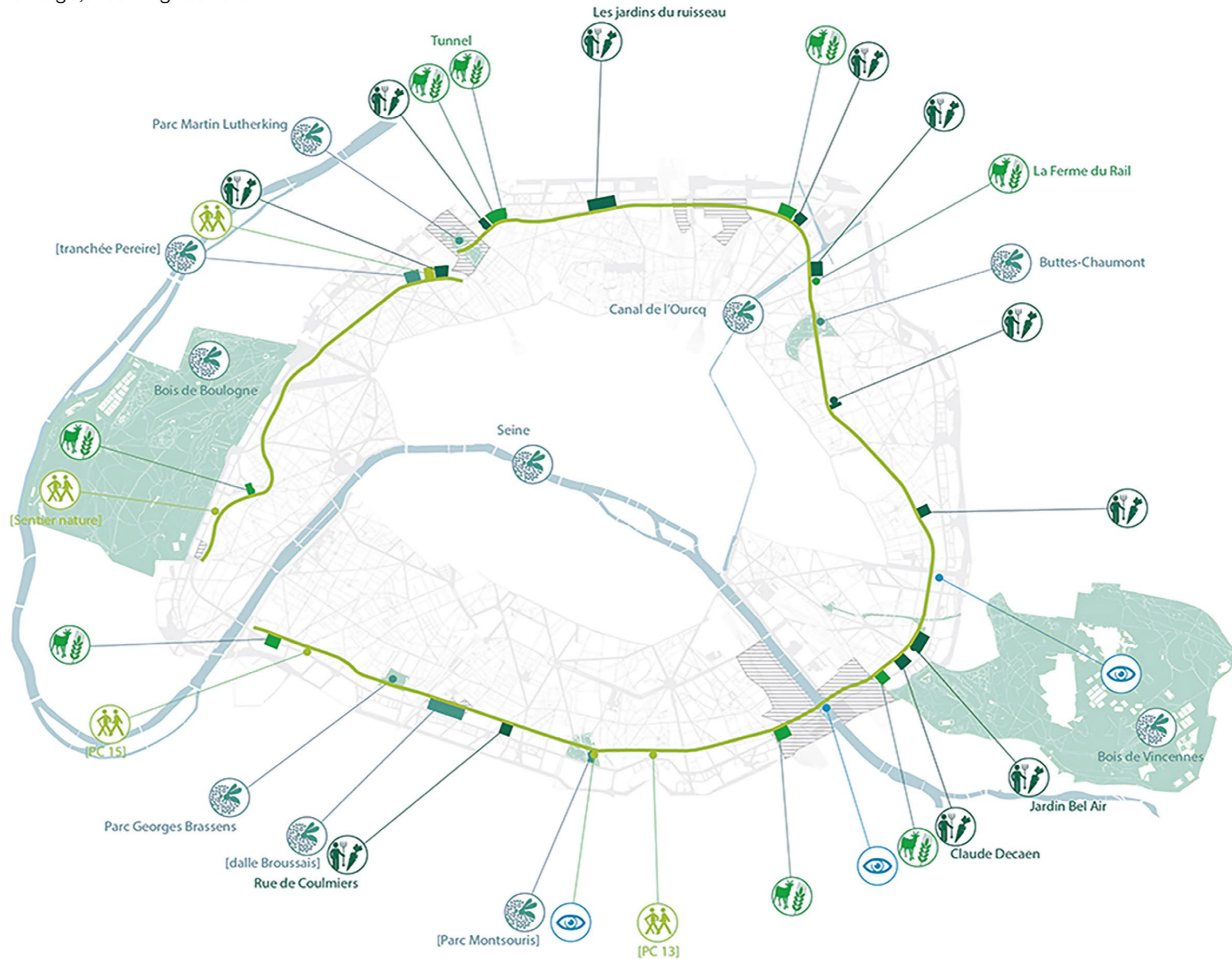
Biodiversity

Belvedere

Urban agriculture

Shared garden

Agriculture



Because of the particularity of the railway landscape, there are many natural heritages here. Later, people also developed urban agriculture along the railway after it abandoned.

Stations and comprehensive projects

Stations:

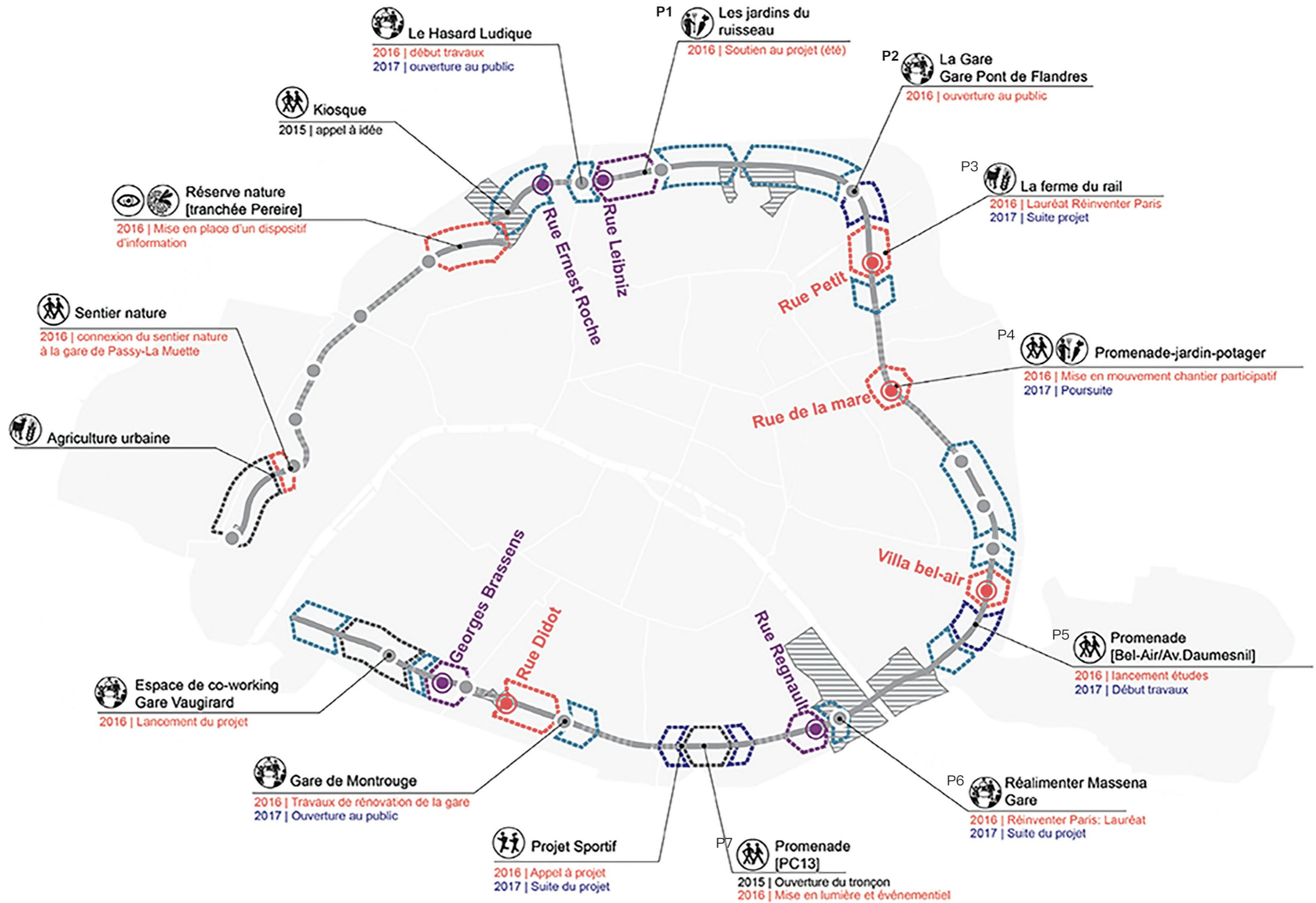
● Early 2016

● Late 2016

Project starting time

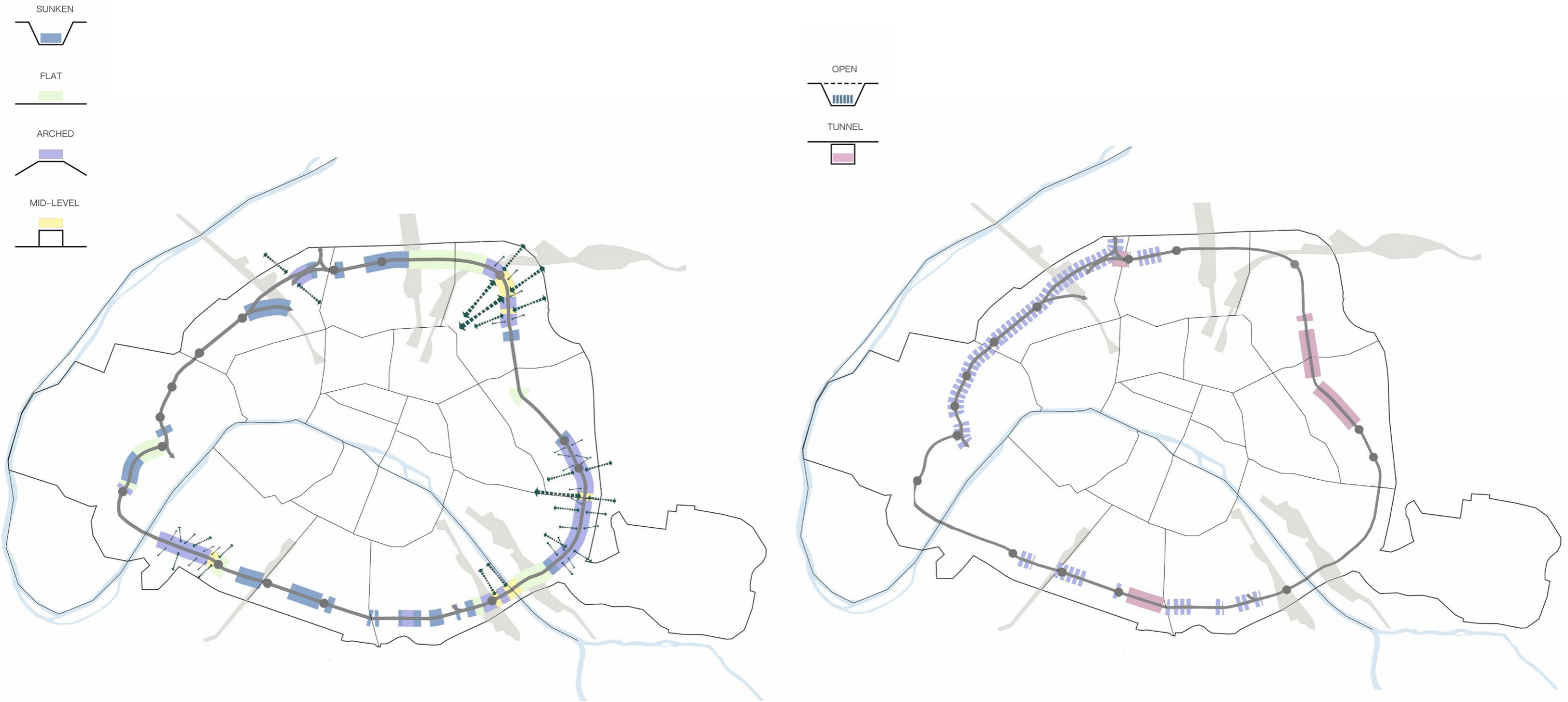


▨ Related projects



There are many comprehensive projects planned along the railway, but some of them were not realized and need to plan well and start.

Shape of railway

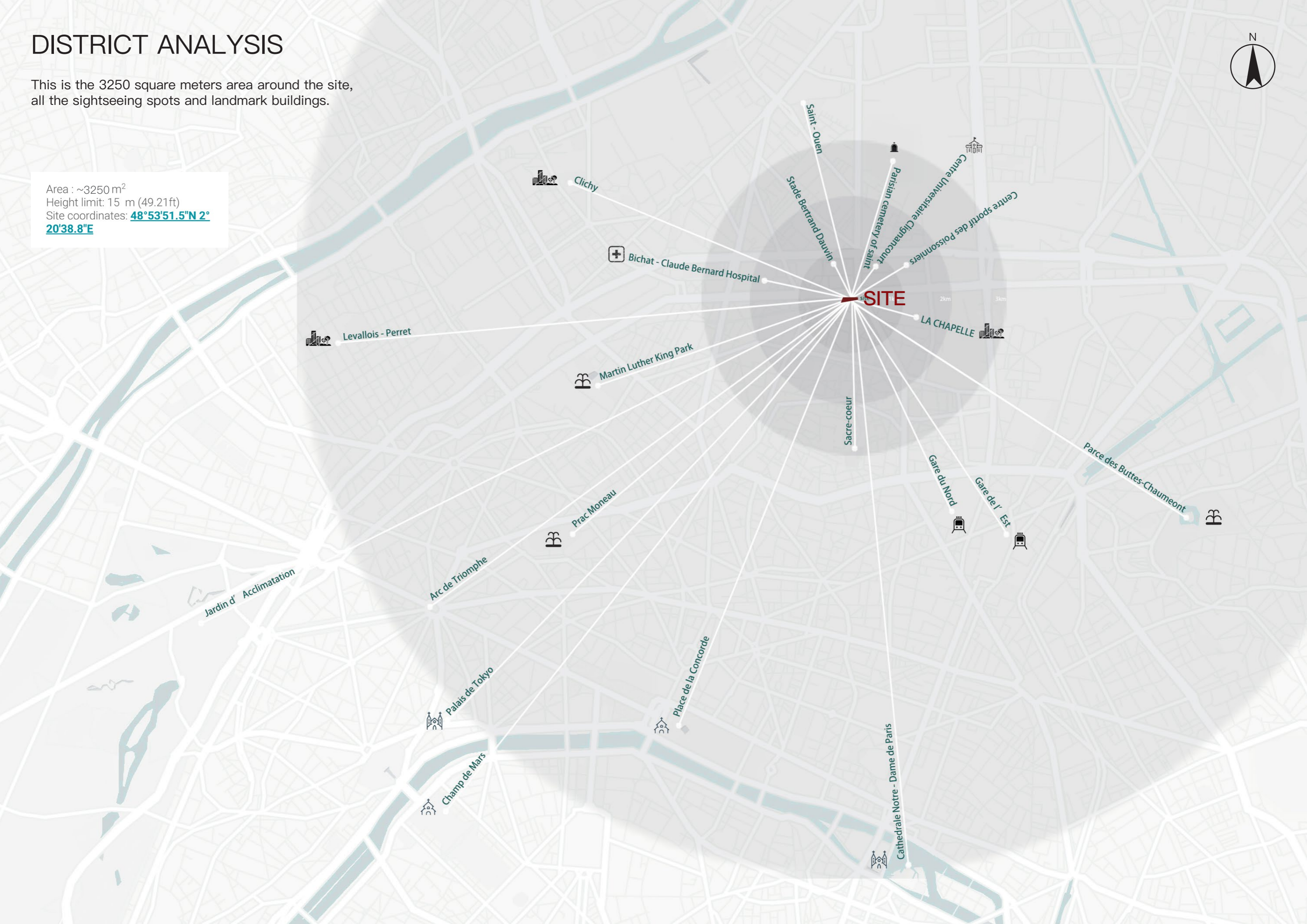


The railway has many different shapes of sections, some are sunken, some are flat, some are arched, and the others are mid-level. Some parts of the railway are open, and the other parts are tunnels.

DISTRICT ANALYSIS

This is the 3250 square meters area around the site, all the sightseeing spots and landmark buildings.

Area : ~3250 m²
Height limit: 15 m (49.21ft)
Site coordinates: [48°53'51.5"N 2°20'38.8"E](#)



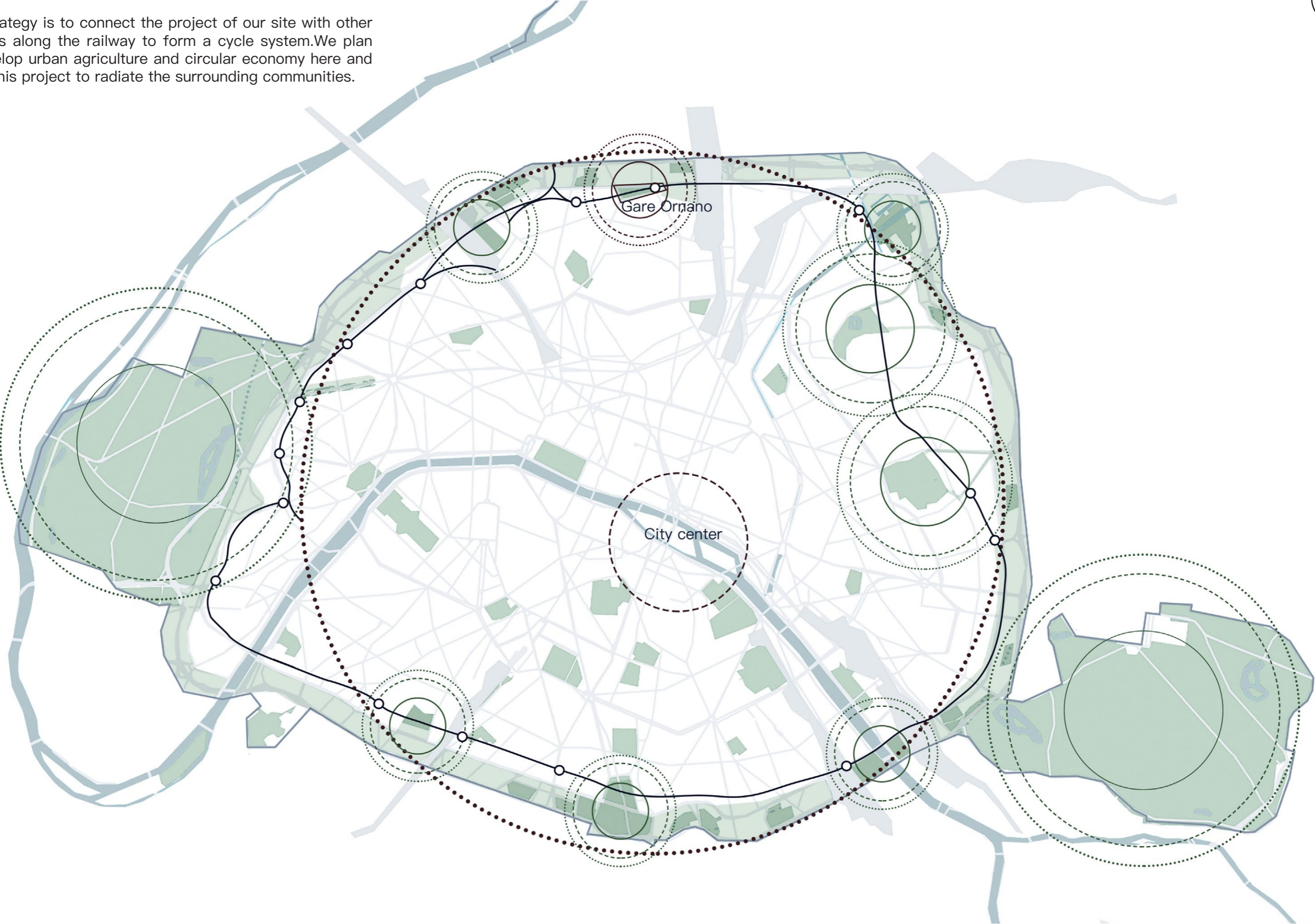


CHAPTER 2
STRATEGY

STRATEGY PLAN



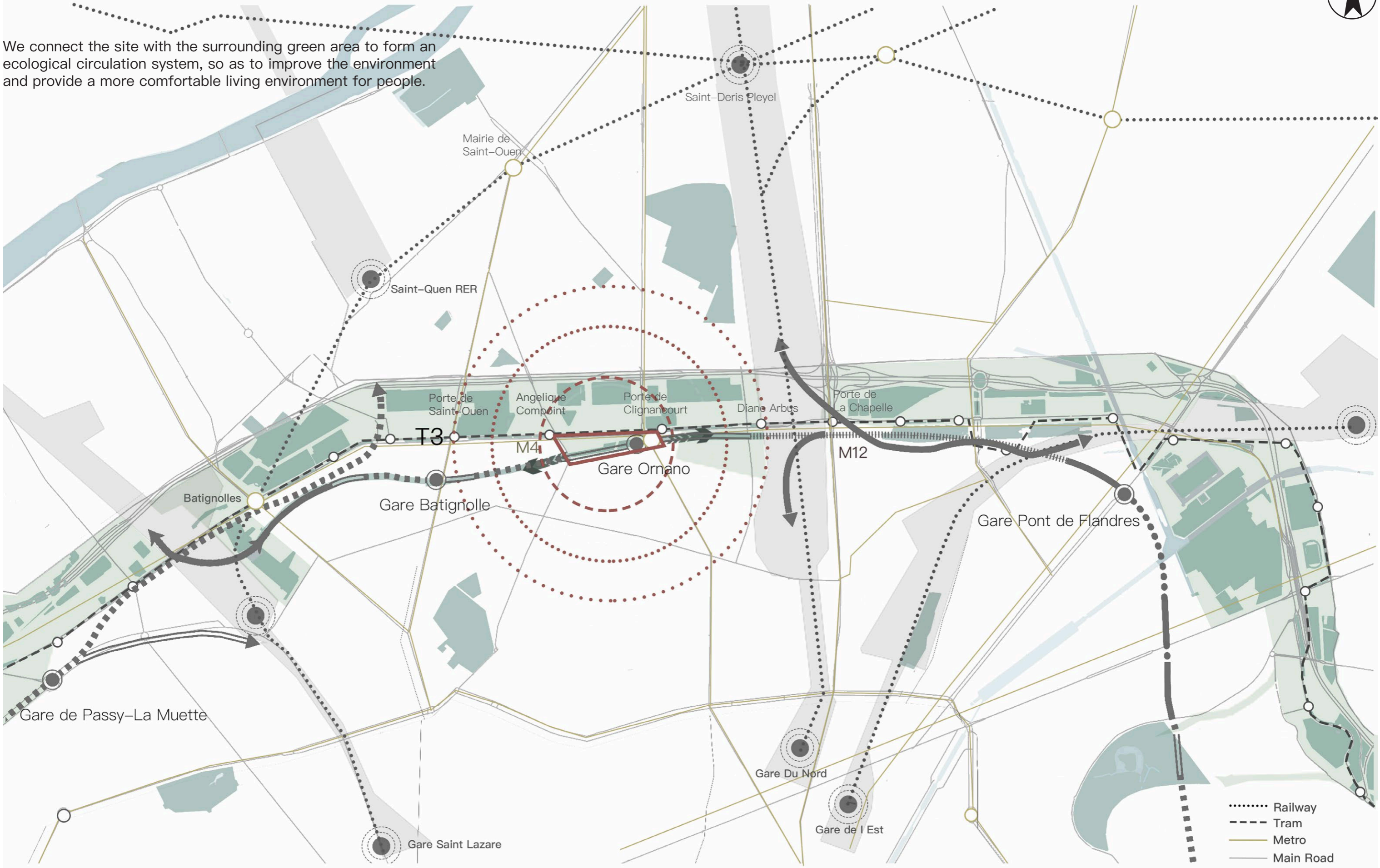
The strategy is to connect the project of our site with other projects along the railway to form a cycle system. We plan to develop urban agriculture and circular economy here and make this project to radiate the surrounding communities.



STRATEGY PLAN



We connect the site with the surrounding green area to form an ecological circulation system, so as to improve the environment and provide a more comfortable living environment for people.



- Railway
- - - - - Tram
- Metro
- Main Road

OBJECTIVES



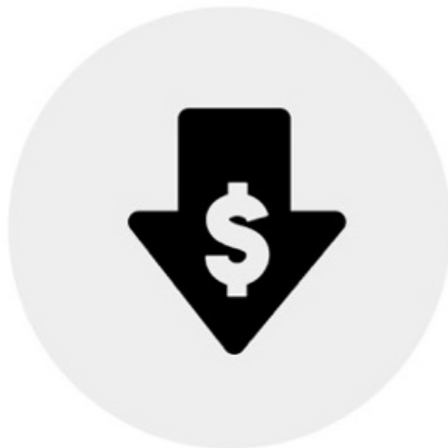
Adaptability

Alternate uses of the marketplace (urban playground, space for community activities etc)



Modular

Modular layouts for transient/permanent shops



Cost Effective

Inexpensive/ sustainable materials and design ideas

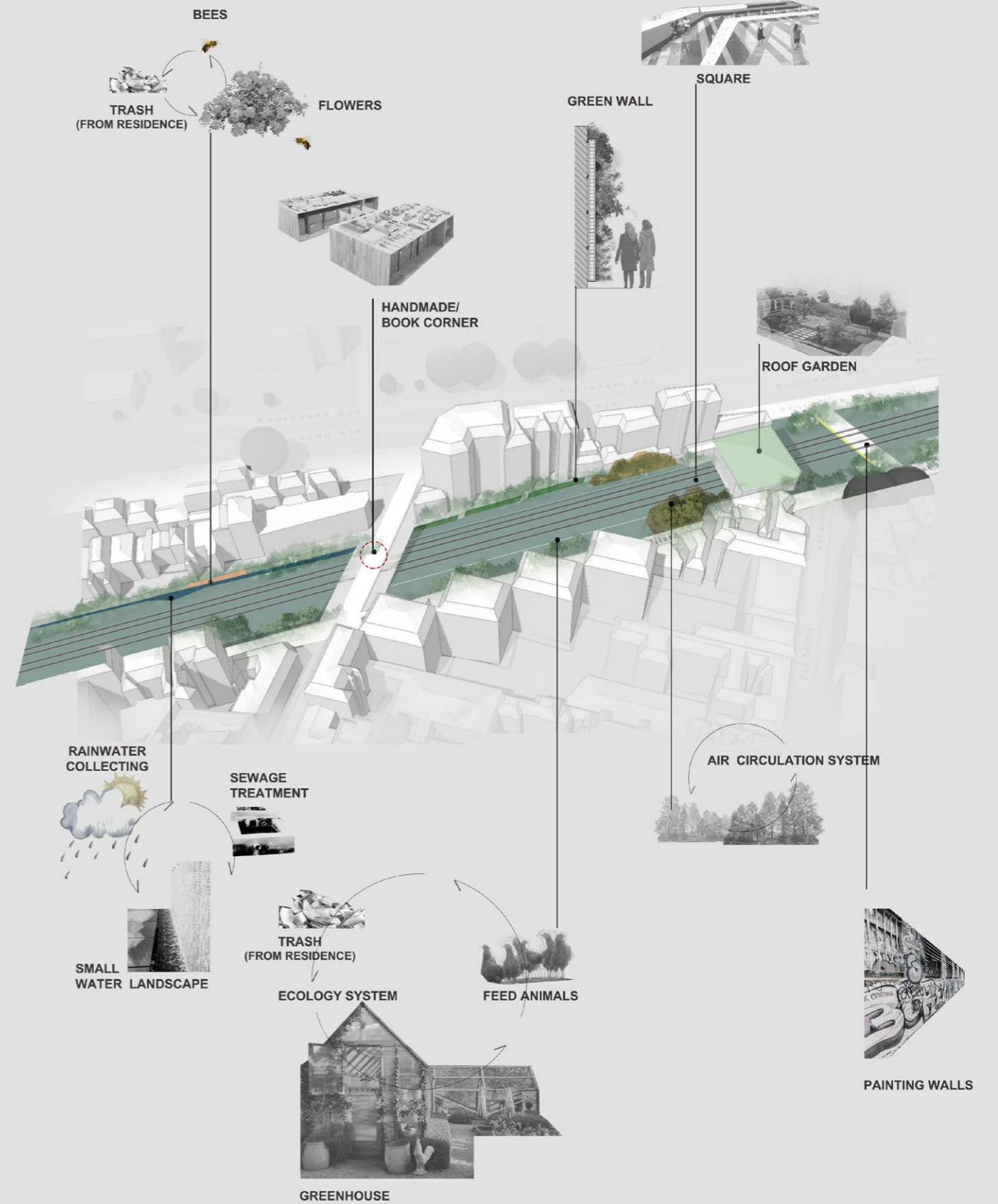


Scalable

Flexible design to accommodate the changing demands of weekend market and community participation activities

Established along one of the neglected platforms of the Petite Ceinture former Ornano station, the project will be one of a kind of project that not only reused the abandoned space of Petite Ceinture but also converted the patch into a community space for society development driven activities. It will include activities like urban agriculture, health workshop, pop-up stores, interactive kitchens and so on to develop circular economy and sustainable ecosystem.

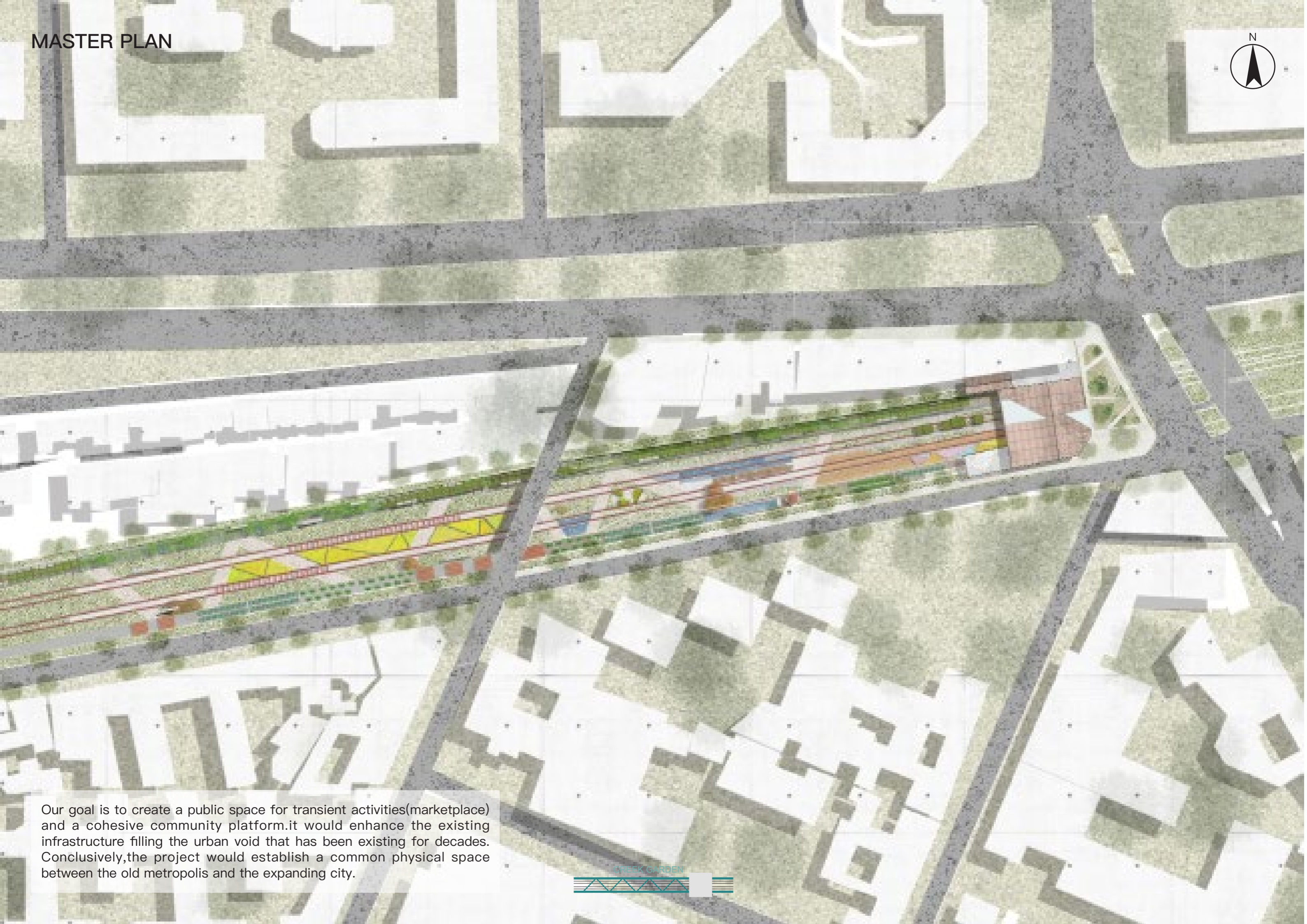
CONCEPT ANALYSIS





CHAPTER 3
MASTER PLAN

MASTER PLAN



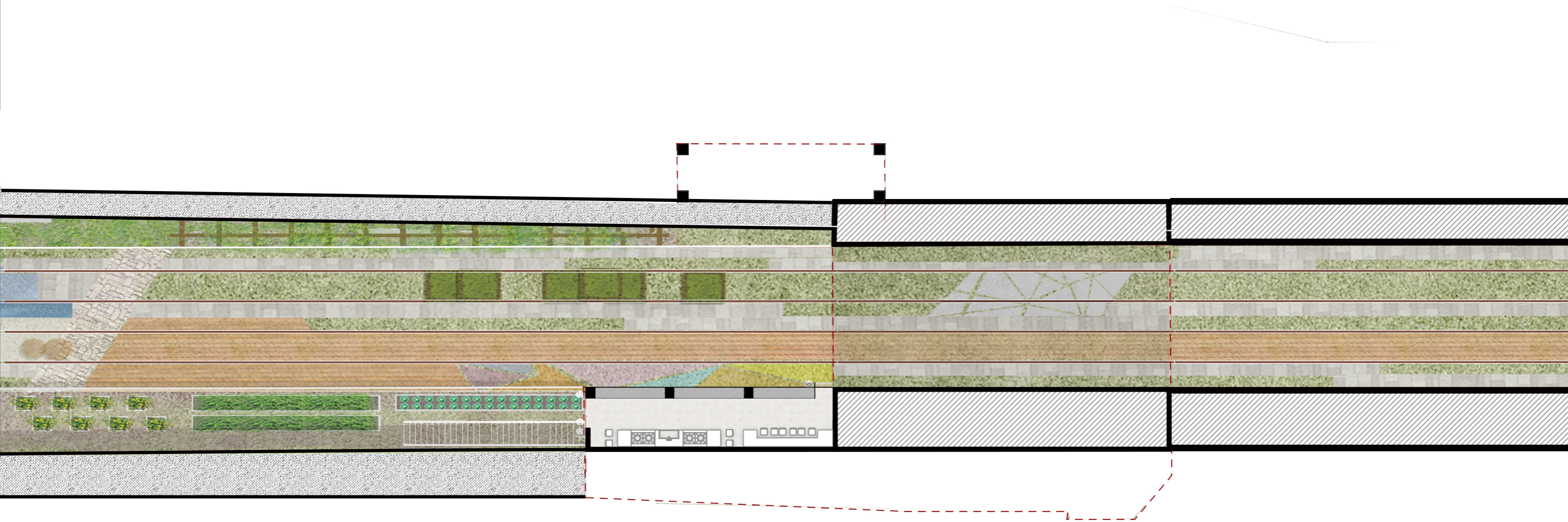
Our goal is to create a public space for transient activities (marketplace) and a cohesive community platform. It would enhance the existing infrastructure filling the urban void that has been existing for decades. Conclusively, the project would establish a common physical space between the old metropolis and the expanding city.



CHAPTER 4
ARCHITECTURE

ARCHITECTURE PLAN

BASE FLOOR PLAN 1 : 500

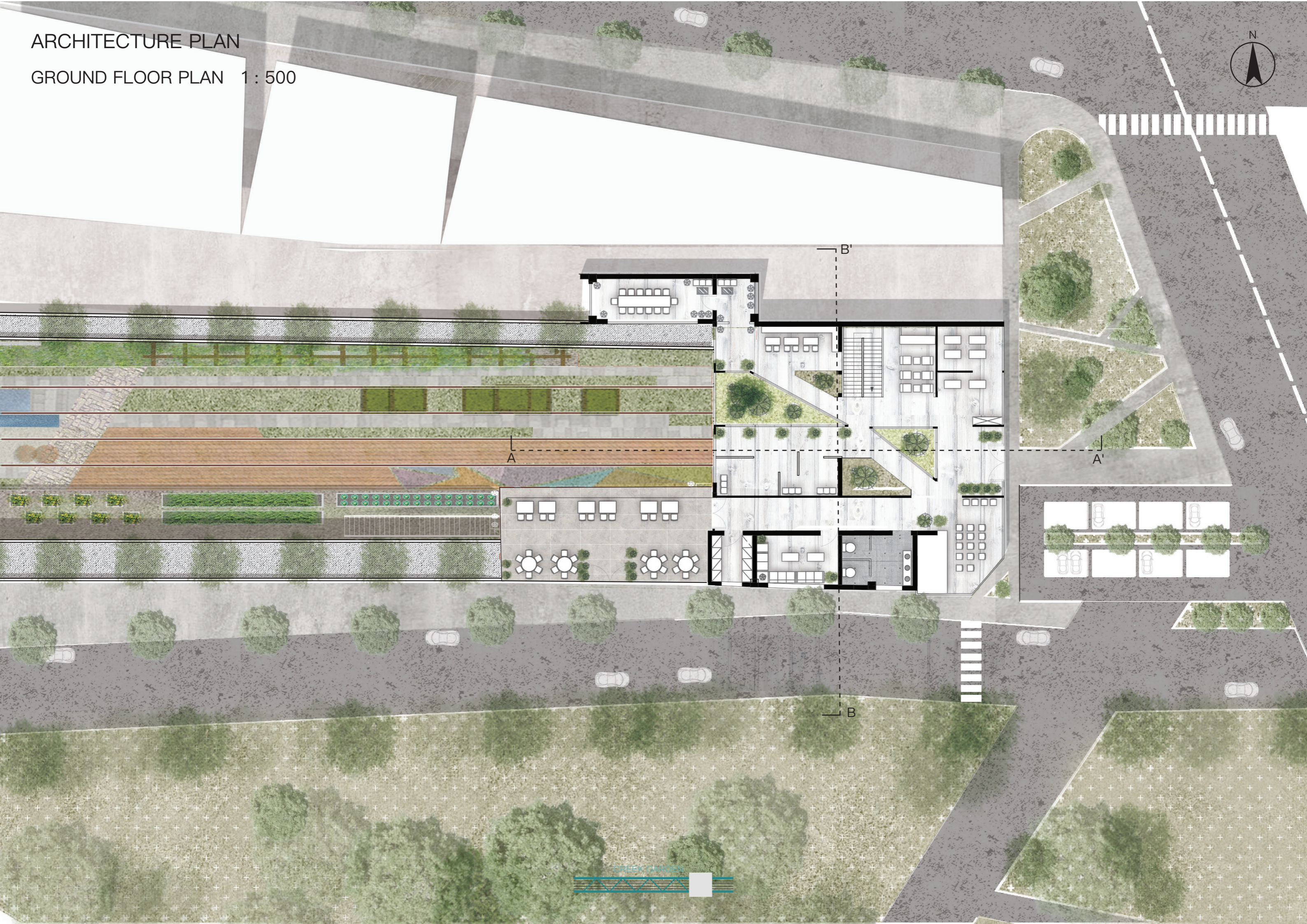


The building has two floors in total, which is composed of different functional zones. There are conference hall, open kitchen, reading room, exhibition area, multi-function room and other areas. It provides convenient service and conversation space for people. People can experience natural life and learn ecological knowledge here. Promote urban agriculture, develop circular economy and sustainable system.



ARCHITECTURE PLAN

GROUND FLOOR PLAN 1 : 500



A

B'

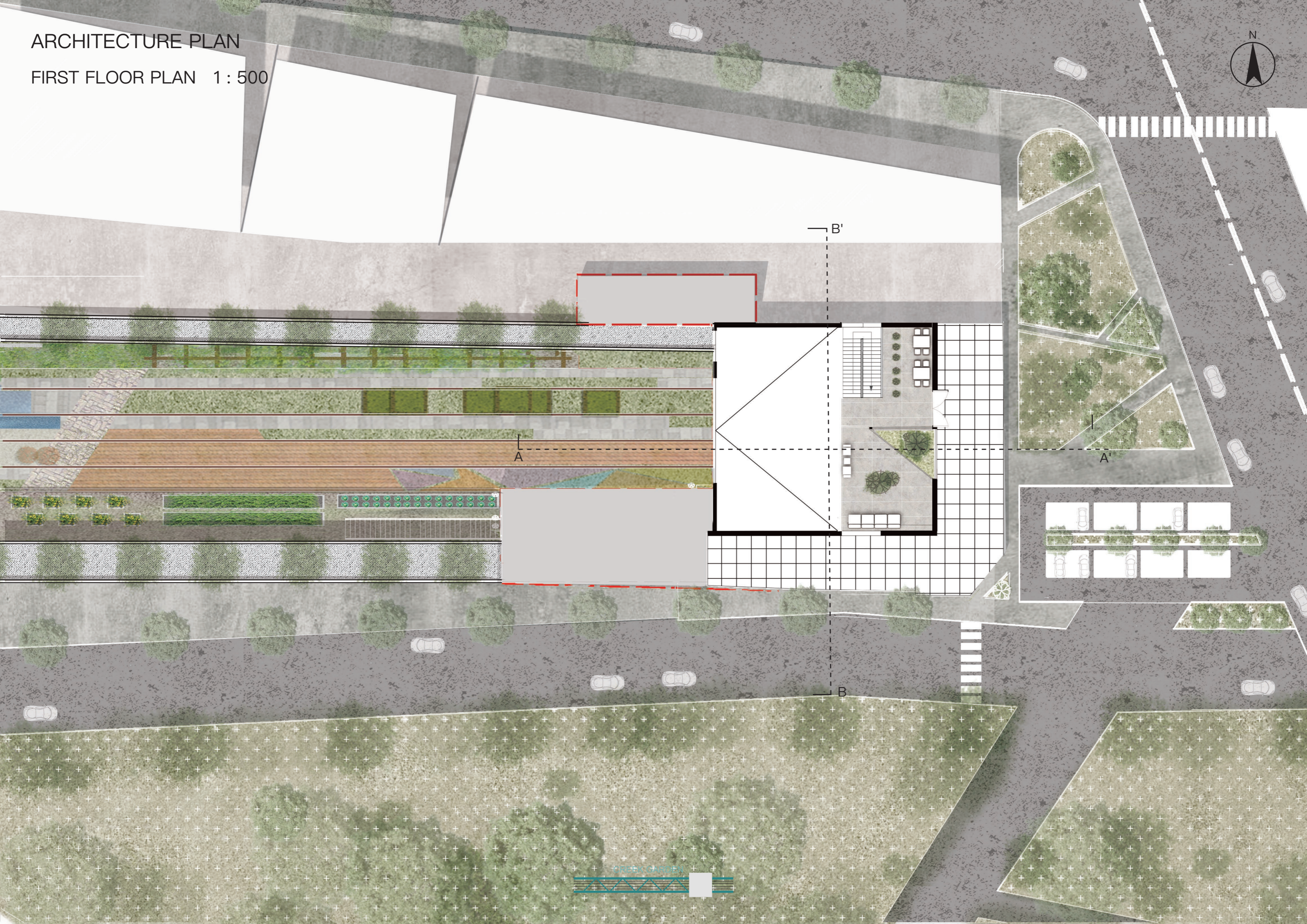
A'

B

CREEK CROSSING



ARCHITECTURE PLAN
FIRST FLOOR PLAN 1 : 500



A

B'

A'

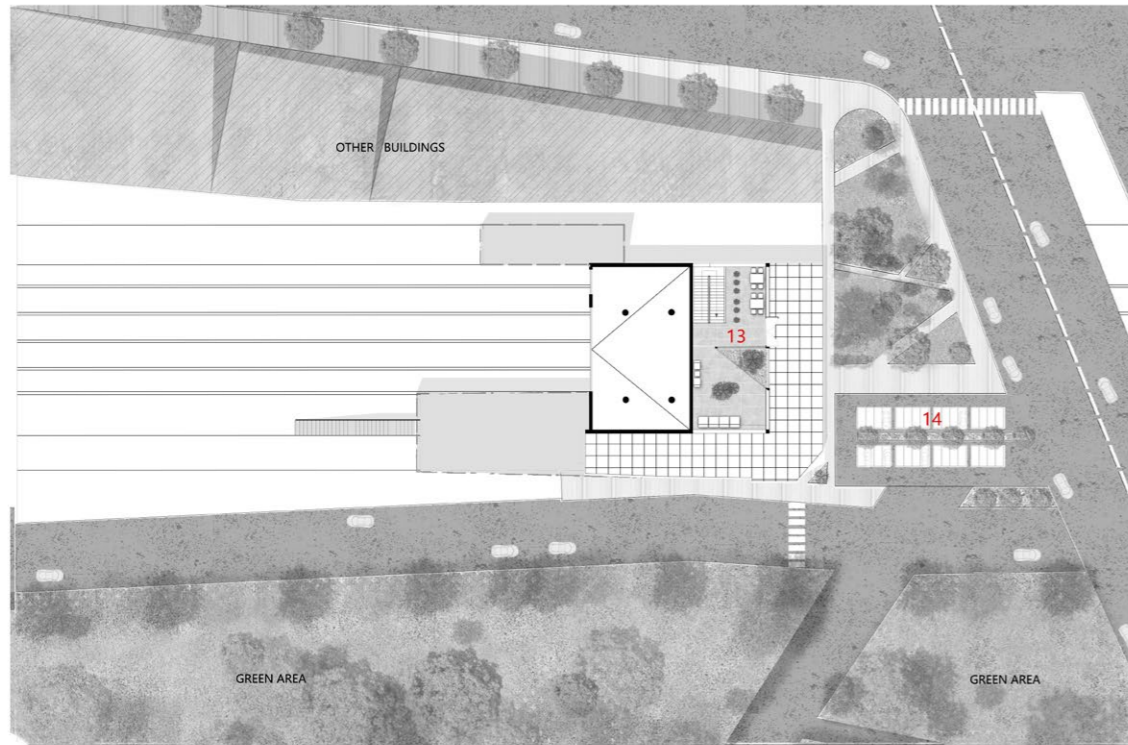
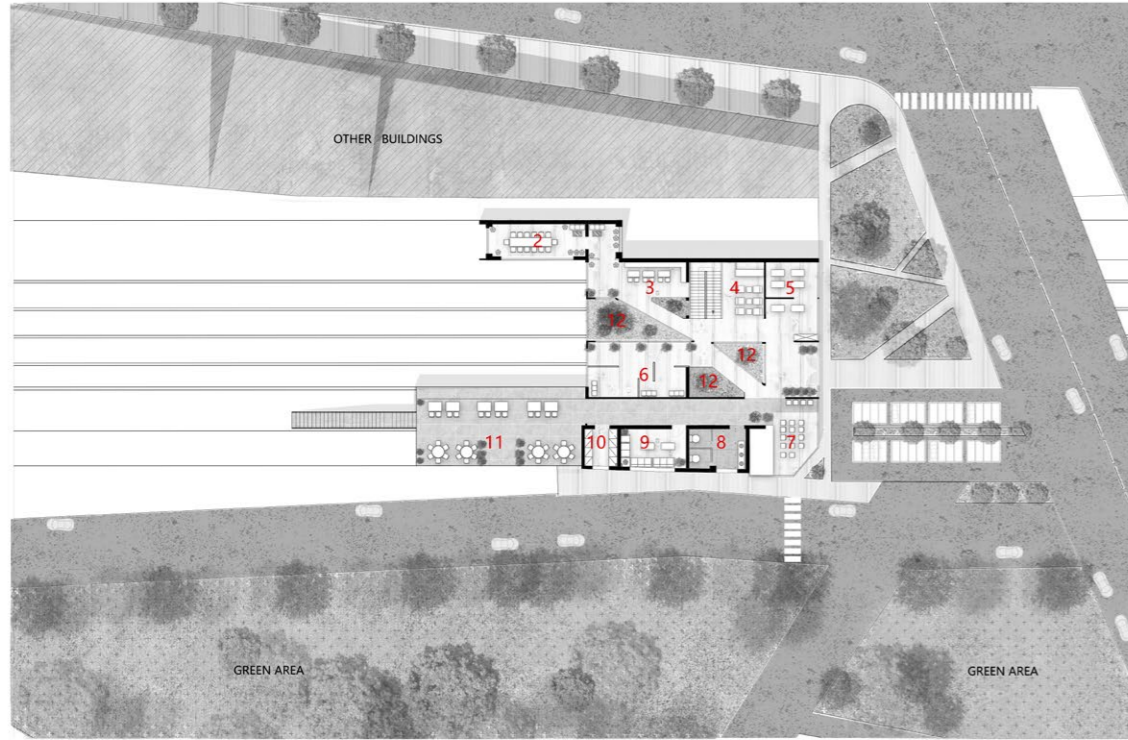
B

CREEK GARDEN



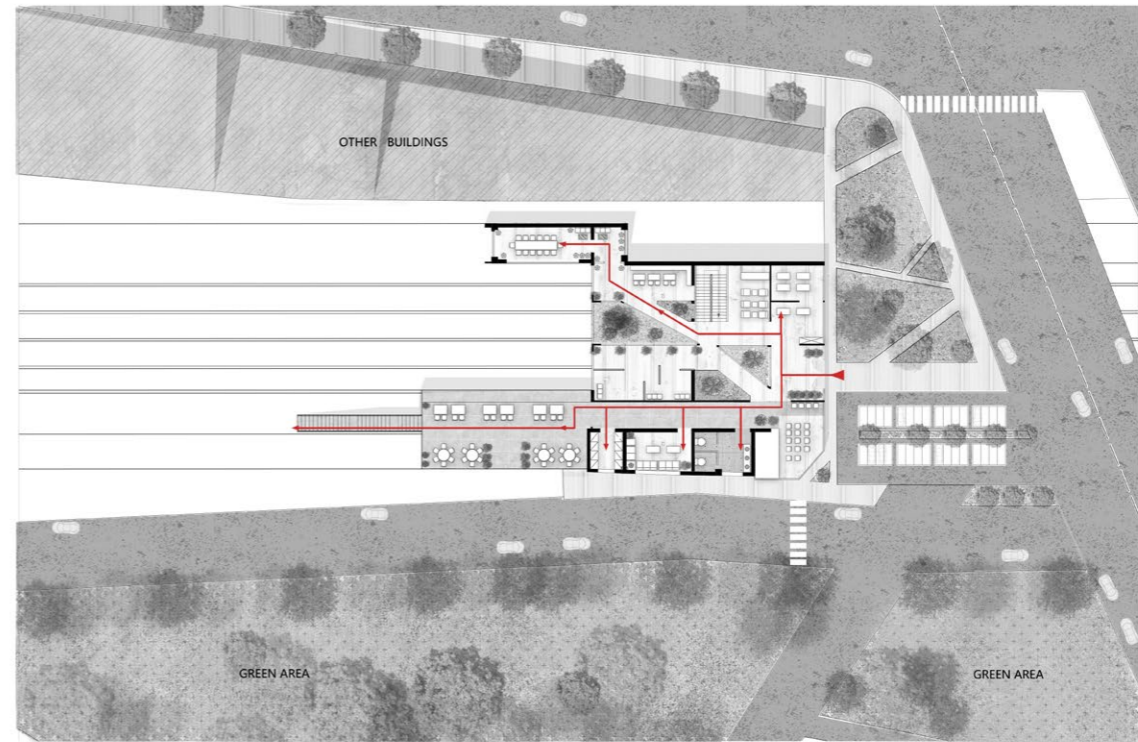
FUNCTIONAL ANALYSIS

STREAMLINE ANALYSIS



- 2. CONFERENCE ROOM
- 3. SALON
- 4. BAR
- 5. HANDMAKE ROOM
- 6. EXHIBITION AREA
- 7. PERFORMANCE ROOM
- 8. TOILET
- 9. READING ROOM
- 10. TOOLS ROOM
- 11. BBQ AREA
- 12. ATRIUM

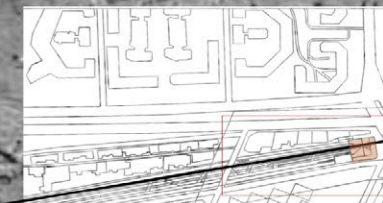
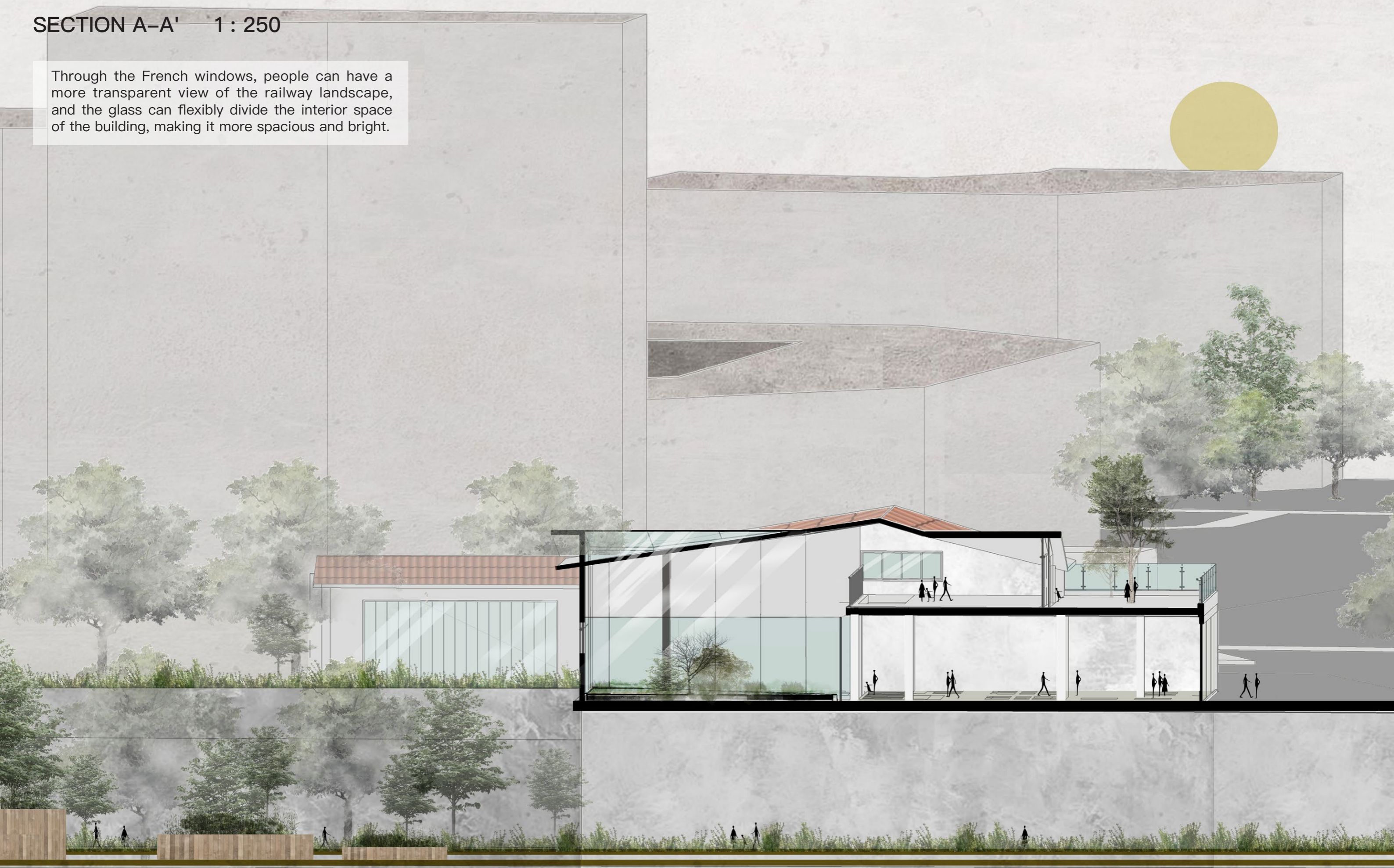
- 13. TERRACE
- 14. PARKING LOT



TRAFFIC FLOW

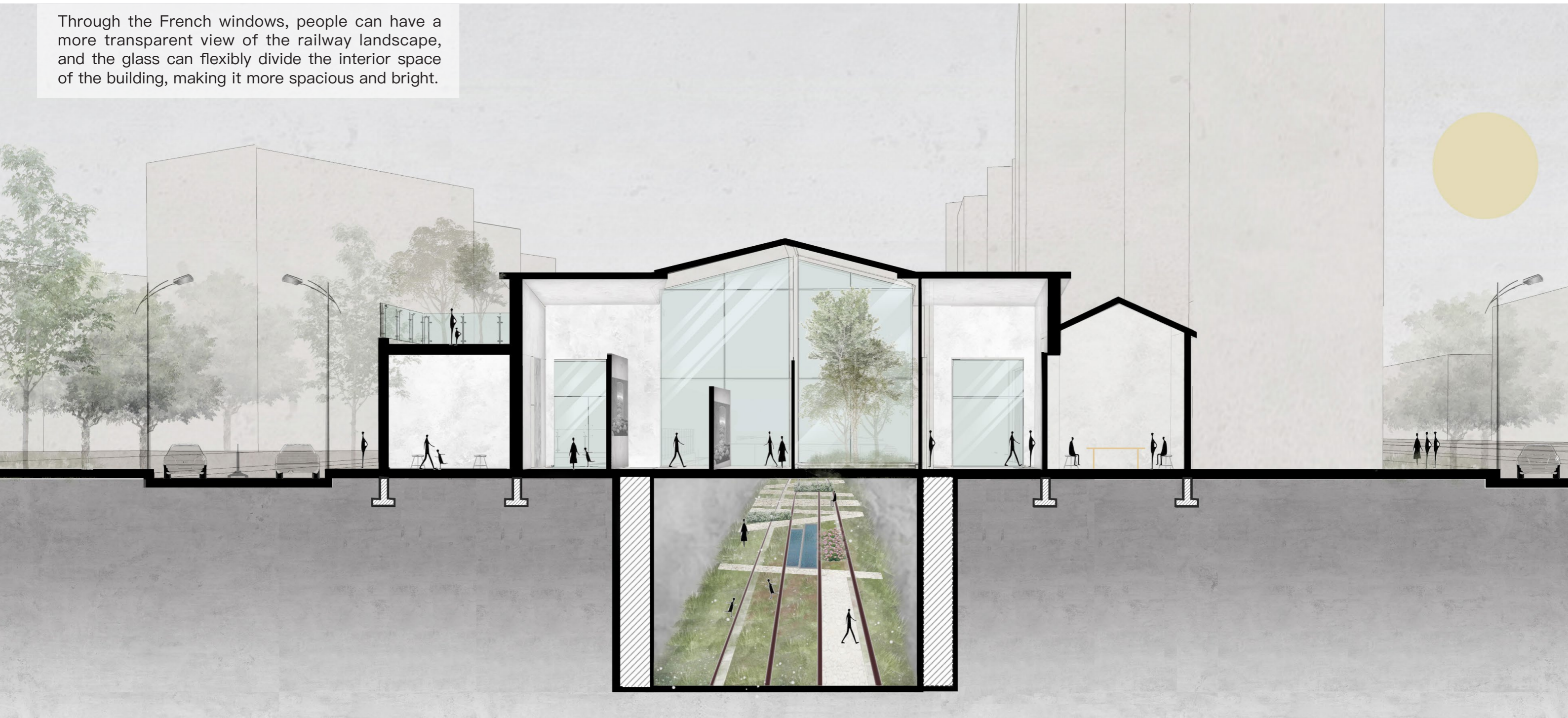
SECTION A-A' 1 : 250

Through the French windows, people can have a more transparent view of the railway landscape, and the glass can flexibly divide the interior space of the building, making it more spacious and bright.



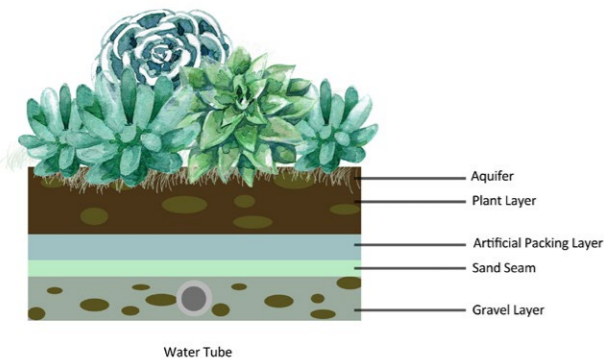
SECTION B-B' 1 : 250

Through the French windows, people can have a more transparent view of the railway landscape, and the glass can flexibly divide the interior space of the building, making it more spacious and bright.



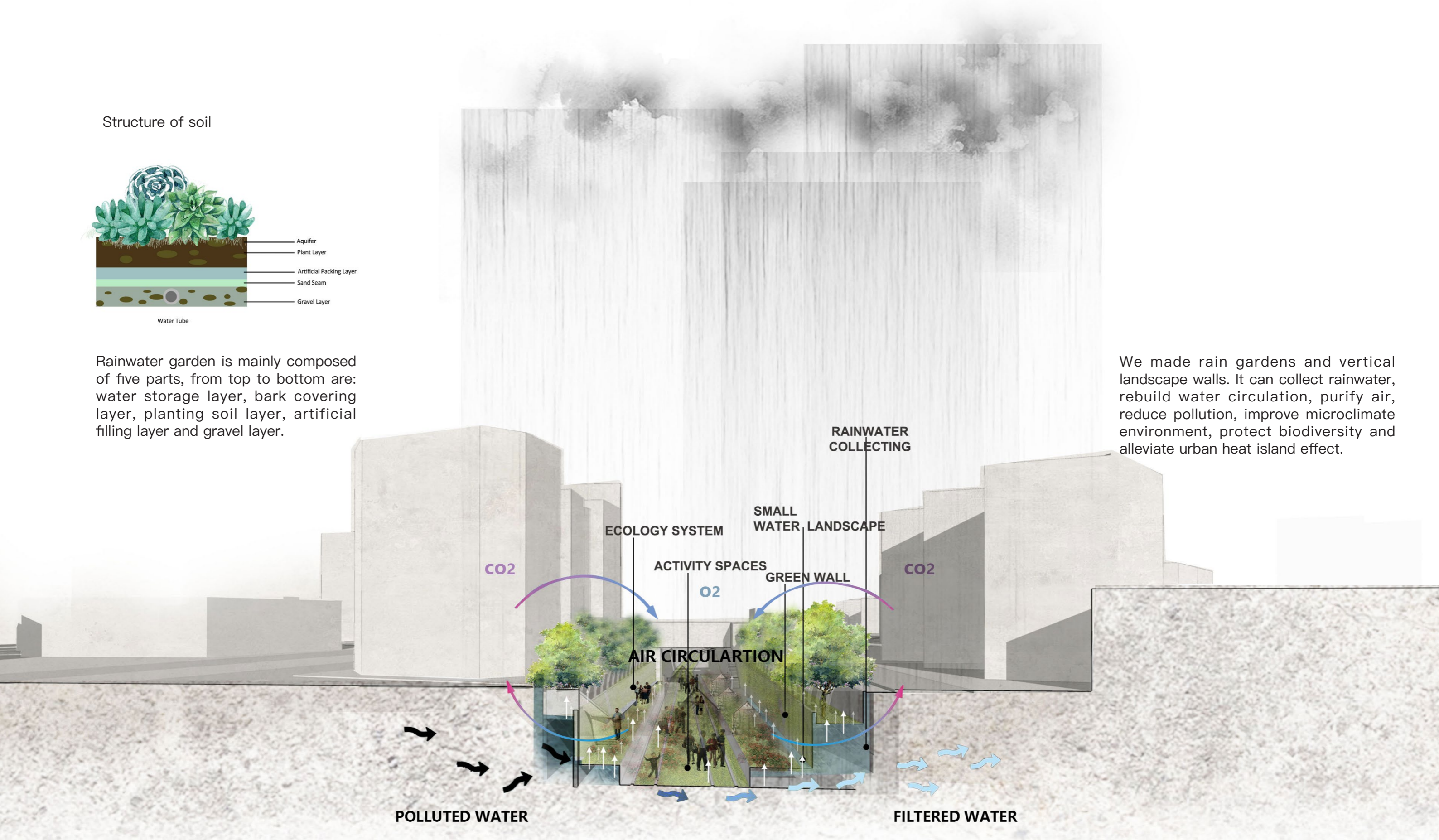
ECOSYSTEMS ANALYSIS

Structure of soil



Rainwater garden is mainly composed of five parts, from top to bottom are: water storage layer, bark covering layer, planting soil layer, artificial filling layer and gravel layer.

We made rain gardens and vertical landscape walls. It can collect rainwater, rebuild water circulation, purify air, reduce pollution, improve microclimate environment, protect biodiversity and alleviate urban heat island effect.

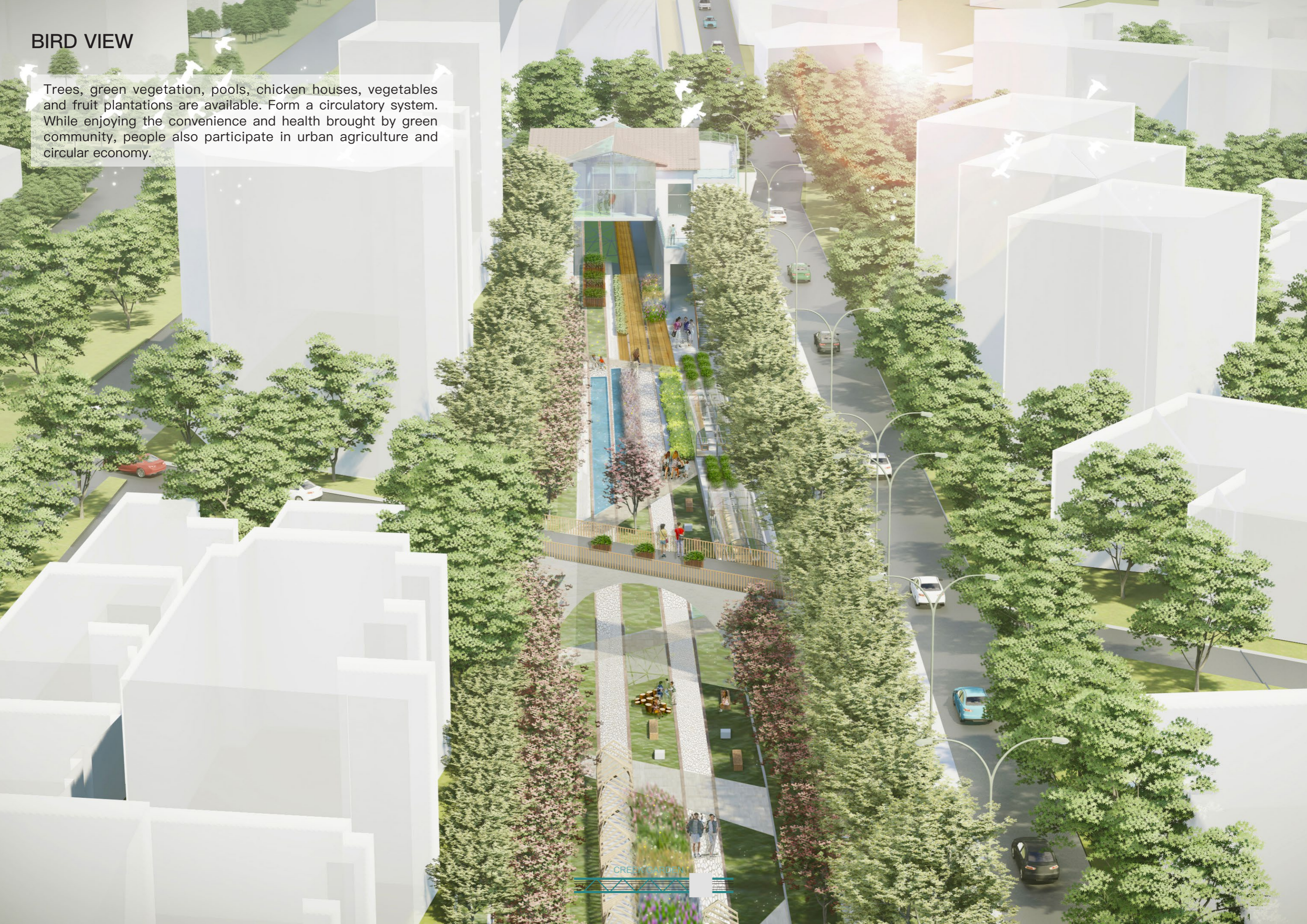




CHAPTER 5
REDERINGS

BIRD VIEW

Trees, green vegetation, pools, chicken houses, vegetables and fruit plantations are available. Form a circulatory system. While enjoying the convenience and health brought by green community, people also participate in urban agriculture and circular economy.



People can look at the whole site in the building. Children can play and feel the beauty and comfort brought by nature. And participate in planting, feel life, and care more about the community and environment.



People can look at the whole site in the building. Children can play and feel the beauty and comfort brought by nature. And participate in planting, feel life, and care more about the community and environment.



In the room, there are parent-child activities, not only can increase their own knowledge of ecological environment protection, but also can educate children to protect our living environment.



The interior of the building is designed with open space and private space to provide more activity area for people and more space for children to play. Through the spacious windows, people can look out of the window and feel the relaxation brought by nature.

