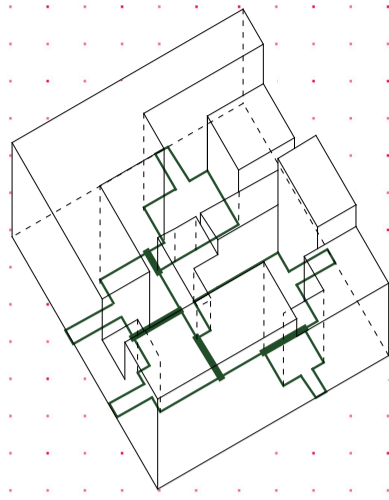
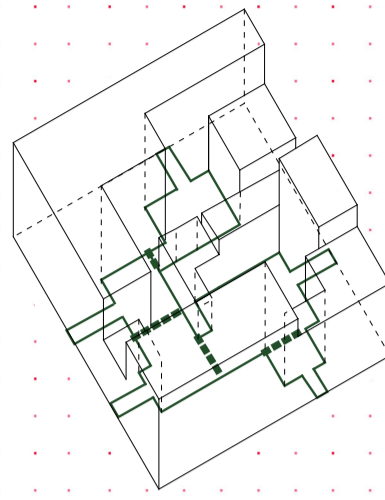


URBAN POLICY IN DOMESTIC COURTYARD



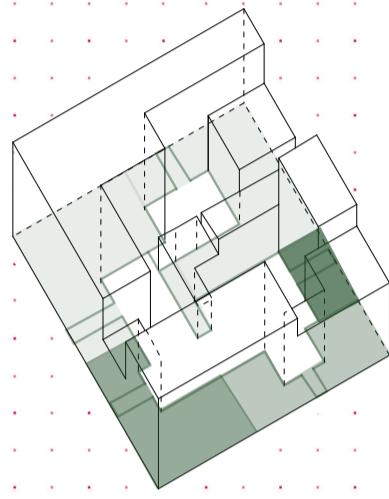
1. STATE OF ART

Domestic courtyards divided by property walls



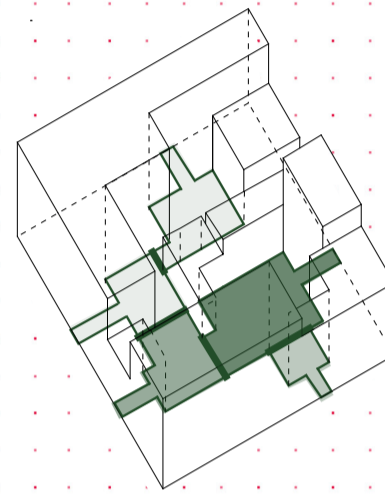
2. VISUAL CORSSING THOURH WALLS

The walls are maintained but become taxing barriers in which visual permeability is possible.



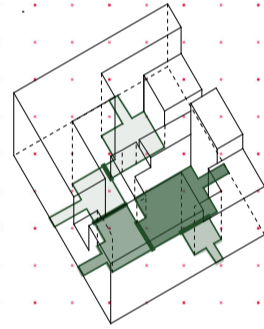
3. CONSIDER CONSIDER THE AMOUNT OF USERS

Domestic courtyards have a private character related to the amount of residents who have access to them



4. GRADIENDT-OF COLLECTIVNESS

Courtyards are redefined according to the amount of users using them



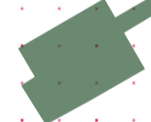
GRADIENT



COLLECTIVE

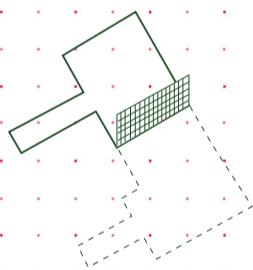


COLLECTIVE/PRIVATE

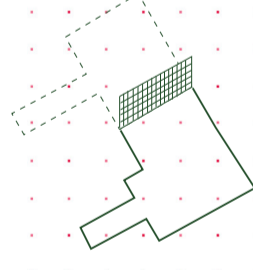


PRIVATE

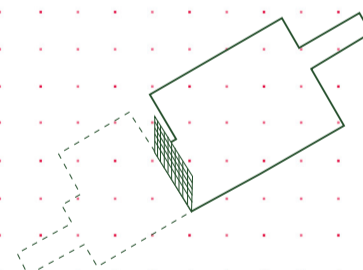
WALL



VISUALLY PERMEABLE

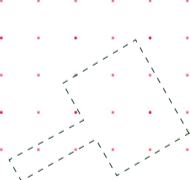


VISUALLY PERMEABLE

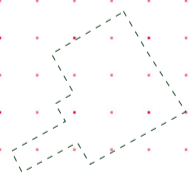


VISUALLY PERMEABLE

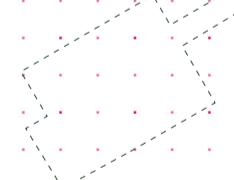
SURFACE



IMPERMEABLE SURFACE
PERMEABLE SURFACE

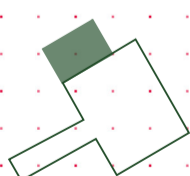


IMPERMEABLE SURFACE
PERMEABLE SURFACE

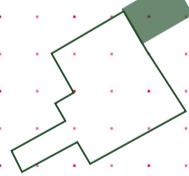


> PERMEABLE SURFACE

GROUND FLOOR



SOCIAL SERVICES (extra room, laundry, sharing kitchen)



SOCIAL SERVICES (extra room, laundry, sharing kitchen)