



Drawing 52. Greenery in Eilat, Source: Author

3.7 THE URBAN FABRIC OPEN SPACES

3.7.1 PARKS AND GARDENS

In Eilat, the creation and development of parks and gardens have played a pivotal role in blending the city's urban fabric with its natural desert surroundings. Initially, open spaces were developed close to the main axis of development along Ha'Tmarim Boulevard. The aim was to create a green desert oasis by preserving natural drainage channels and sediments within a garden pattern, coupled with extensive planting of vegetation, particularly focusing on trees along the edges. Central gardens like Fradkin Garden and Benjamin Garden were designed around existing secondary drainage channels. A grove of trees, symbolising "a tree for every child" in Eilat, was planted with an emphasis on local or climate-adapted flora. These

gardens have evolved alongside the city's urban development, incorporating new attractions such as a grand fountain, wide lawns, a stone-paved square, and a skate park. These additions transformed the local character of the gardens, altering the original drainage and sediment management system, and turning them into standard urban parks that could belong in any city.

Eilat is situated in an extreme, arid climate zone characterized by very high summer temperatures and a precipitation regime of a few extreme days per year. The existing soil conditions, especially in the plains, are not optimal for vegetation. The city's vegetation varies extremely between "natural" desert appearances and the highly designed plant



Figure 112. Fradkin Garden 1952. Source: Eilat's archive, Shmulik Tegar



Figure 113. Holland Park. Source: Ya'aov Shkulnik



Figure 115. Fradkin Garden nowadays. Source: Eilat's archive, Shmulik Tegar



Figure 114. Holland Park. Source: Ya'aov Shkulnik

life of hotel complexes. The city's outskirts and the river axis, such as the Shachmon, introduce ecological sediment display features into the city: isolated Acacia trees and clusters of desert vegetation in "pockets" created by the hope or flow of sediment soil, which provides a relatively comfortable growing environment for desert plant life.

Some open areas, especially on the city's outskirts as well as parts of Fradkin Garden and beach strip zones, have attempted to create a new desert vegetation language that combines local flora. This is an irrigated landscaping system that creates a "desert grove" composed of local trees (Tamarisks/Acacias/Date Palms) or trees from desert environments around the world, where irrigation and improved soil conditions allow it to exist as a desert oasis space.

The lush appearance of the city's urban landscaping, along with initiatives in areas like Holland Park and the development of botanical gardening systems, demonstrates that blending the harsh climate and heat with optimal cultivation conditions of water and



Figure 116. Eilat's Botanic Garden. Source: Author

soil can support a diverse and rich vegetation palette. This fusion significantly enriches the urban environment, seamlessly integrating Eilat's distinctive desert qualities with green, vibrant spaces that elevate the quality of urban life.

2.7.2 ALLEYS AND PATHWAYS

Alleys and pathways, much like the recessed floors at the building level, exist between buildings to serve the same purpose of protection from the desert climate at the urban space level. These paths interlace throughout the city, creating an internal grid that produces a characteristic feature unique to Eilat, offering a solution to the special Eilat climate. Particularly in the heart of the city, there are especially many paths, connecting between streets in a higher hierarchy to other streets and public spaces.



Figure 117. Independent Houses block. Source: Eilat's Municipality



Figure 118. Independent Houses block. Source: Eilat's Municipality

2.7.3 INTERNAL COURTYARDS AND PATHWAYS

In Eilat's early development stages, architectural planning confronted the challenges of desert building, creating distinctive construction patterns that are still observable in the city's urban landscape. These include transitional spaces designed to fit the unique requirements of a desert city, such as alleyways, pathways, and internal courtyards, all of which are present in the city's fabric, especially towards the north and at its centre.

The development of large hotel complexes along the eastern and northern shores, in tandem with the expansion of residential neighbourhoods in the south, spread the city across a wide spectrum. Separated land designations divided the city into distinct urban spaces – a hotel city, a residential city, and a business city, interconnected by a network of broad, unshaded traffic arteries. The historical axis of Ha'Tmarim Boulevard has moved away from each of these urban centres. The location of civic centres such as government offices and the city hall still maintain this area as the civic centre of the city, continuing to draw its residents. However, the distance and urban dispersion have turned this traditional axis into a space more inclined towards private transport, lacking pleasant and comfortable walking spaces, almost devoid of public transport service, and nearly without shaded public spaces worthy of staying in a desert city. The construction, especially in the central urban area, does not create a clear barrier, and the street space is undefined, consisting of many large, shadeless paved areas.

This situation poses a challenge in a desert environment, characterized by significant water use and the creation of heat islands during daytime. Nevertheless, it's crucial to acknowledge the role these spaces play in facilitating gatherings and activities in the cooler evening hours or during winter, highlighting the need to carefully consider the appropriate scale for such spaces in the urban design.



Figure 119. Inner pathways. (Source: Eilat's Municipality)



Figure 120. Lack of Shading. (Source: Eilat's Municipality)

In the established urban areas of Eilat, street trees are strategically placed, with a particular emphasis on palm trees. While palm trees symbolize the desert and contribute to the city's imagery, they do not

significantly enhance comfort or provide the much-needed shade in the paved spaces of the urban landscape. The continuity of shade in streets or transit axes is only present in smaller-scale spaces - the alleyways and pathways - where the buildings themselves cast a shadow, creating a more comfortable and narrow-scale shaded area. The facades of these buildings play a crucial role, equally important as vegetation, in creating more comfortable climatic conditions for pedestrians.

3.8 TYPOLOGICAL ATLAS (ARCHITECTURE OF EILAT)

3.8.1 EARLY BUILDING DEVELOPMENT (1950-1970).

The typical architecture in Eilat is significantly influenced by its unique geographic and climatic conditions. It blends functionality with aesthetics to accommodate the desert climate while also integrating the city's natural landscape and cultural heritage into its urban fabric. This distinct architectural style reflects adaptations to the hot and arid environment, utilising materials and designs that help to cool buildings naturally and create comfortable living spaces.

One notable architectural style present in Eilat is Brutalist row housing. Originating in the 1950s and 1970s, this style is characterised by its functional, unadorned structures made from raw concrete. In Eilat, these buildings

are organised in pairs, with open staircases linking two flats on each floor, separated by about six metres, allowing for natural ventilation and light (Policy Document LB - City of Eilat, 2021).

Another architectural typology found in Eilat is Neo-rural roofing construction. This approach involves groups of single- or two-storey buildings that form internal courtyards. These structures are reminiscent of rural settlements, using local materials and creating shaded and cool communal outdoor spaces. The roofs are often made of materials that reflect the sun's heat, contributing to the

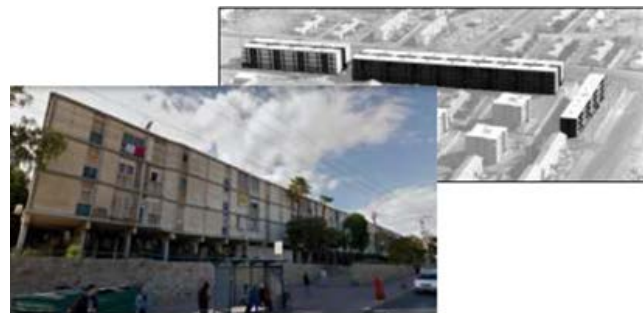


Figure 122. Brutalist raw housing. Source: Eilat's Municipality



Figure 123. Neo-rural roofing. Source: Eilat's Municipality

buildings' thermal efficiency.

The city also features groups of single-storey buildings that generate internal courtyards at fixed intervals, mirroring the Neo-rural style but on a smaller scale. These buildings utilise local construction materials and are among the first phases of construction in the city, highlighting a preference for low-rise, spread-out development that respects the natural terrain and minimises heat accumulation.

A further distinctive architectural feature in Eilat is the indented floor tower block.



Figure 124. Brutalist raw housing. Source: Eilat's Municipality



Figure 125. Indented floor tower block. Source: Eilat's Municipality

These four-storey buildings are designed with a reddish, desert-like facade and feature an indented ground floor with columns for shading purposes. This design not only provides a cooling effect but also adds a unique aesthetic that blends with the surrounding desert landscape.

The materiality and colour palette of Eilat's architecture are deeply influenced by its desert surroundings. The use of local stone, such as the famous "Eilat Stone," and construction materials that naturally blend with the desert's colours, create a harmonious visual connection between the city's built environment and its natural setting. Reddish and sandy hues dominate, echoing the tones of the desert and contributing to a unified urban aesthetic that is both practical and visually appealing.

In summary, Eilat's typical architecture is a testament to innovative and adaptive design principles that address the challenges of its desert climate while celebrating its unique geographical and cultural identity. These architectural styles not only provide functional solutions to environmental conditions but also contribute to the city's distinct character and appeal.

3.8.2 TYPICAL ARCHITECTURE IN EILAT

Given Eilat's arid climate, much of its architecture is designed to cope with the extreme heat and sunlight. Buildings often feature climate-responsive elements such as deep overhangs, shaded courtyards, and reflective materials that minimize heat absorption. The use of light-coloured exteriors to reflect sunlight is common, alongside materials that provide good thermal mass, such as stone or concrete, to help moderate indoor temperatures.

Eilat's architecture tends to harmonize with its stunning natural surroundings, including its mountainous backdrop and the Red Sea coastline. Large windows and outdoor spaces are designed to take advantage of the scenic views, while landscaping often incorporates native desert vegetation that can thrive in the local climate.

The city showcases a mix of traditional and modern architectural styles. Early buildings display simple, functional designs reflecting the practical needs of a developing port and tourist town. Over time, Eilat has embraced more contemporary architectural approaches, featuring sleek, modernist buildings with innovative designs. These include hotel and resort complexes that blend luxury with sustainability, utilizing state-of-the-art construction techniques to

achieve energy efficiency and environmental integration.

Eilat's public buildings and tourist infrastructure reflect its status as a major tourist destination. This includes everything from upscale hotels and resorts to public spaces like parks and promenades designed for leisure and recreation. Architectural designs in these areas often focus on creating inviting, comfortable spaces that encourage outdoor activity and enjoyment of the area's natural beauty.

Eilat's architecture also incorporates influences from around the world. This global influence is visible in the eclectic styles of its buildings, ranging from Mediterranean to contemporary international designs, making the city's architectural landscape rich and varied.

In summary, Eilat's architecture is characterized by its response to the desert climate, integration with the natural environment, blend of traditional and modern styles, and its role as a key destination for tourists from around the globe. This unique combination makes Eilat a vibrant and visually interesting city, where architecture plays a central role in its identity and appeal.

3.8.3 PHYSICAL CHARACTERISATION OF BUILDINGS

The city of Eilat is distinguished by unique physical planning elements that stem from its climatic features and natural landscape, as well as human-made architectural styles

and perceptions. The city’s weather plays a significant role in guiding the planning and development of internal pathways and recessed floors in buildings. Its unique topography drives the design of supporting walls for buildings and the creation of a



Figure 127. Array of land uses coastal strip report 1989, Source: Eilat’s Municipality



Figure 128. Array of land uses coastal strip report 1989, Source: Eilat’s Municipality



Figure 126. Array of land uses coastal strip report 1989, Source: Eilat’s Municipality



Figure 129. Typical facade with “Eilat Stone”, Source: Eilat’s Municipality

facade typical of Eilat Street, utilising local stone known as “Eilat Stone.” Furthermore, the city’s geographical location influences the “desert” materiality that characterises its buildings – including finishes of plaster, cladding, and “desert” colours.

3.9 FIRST ARCHITECTURE IN THE CITY

3.9.1 PITCHED ROOF HOUSING - ONE FLOOR

BUILDING FIRST HOUSES



Figure 130. , 1950. (Source: National Library of Israel)

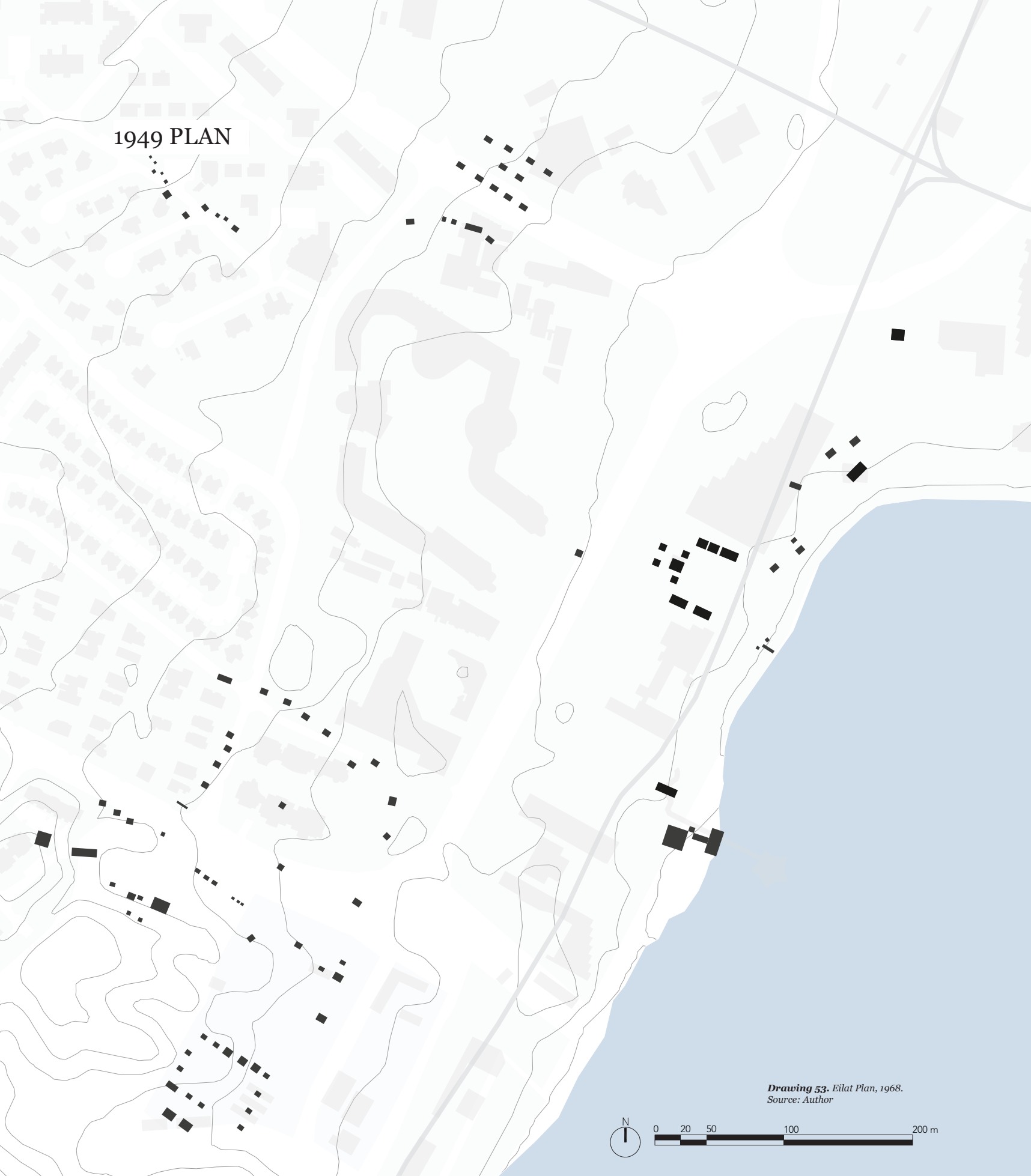
1950



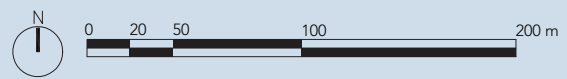
Figure 131. 1950. (Source: National Library of Israel)

Transitional Urbanism. Before the grid was paved or the city formalized, housing in Eilat was defined by transience. This cluster of barracks illustrates the “Camp” typology that preceded the “City.” The arrangement is loose and informal, dictated by the immediate need to house waves of immigrants and workers. It captures a moment of fragility where the settlement was not yet a permanent fact, but a collection of provisional shelters struggling to hold ground.

1949 PLAN



Drawing 53. Eilat Plan, 1968.
Source: Author



FIRST ARCHITECTURE - BUILDINGS FOR LIVING

PITCHED ROOF HOUSING - ONE FLOOR

1951



Figure 132. Construction of first buildings, 1951 Source: Eilat's archive

PITCHED ROOF HAMRA HOUSE IN YE'ELIM
NEIBORHOOD



Figure 133. Hamra House in at Ye'elim neighbourhood , 2010. Source: Eilat's archive

1954

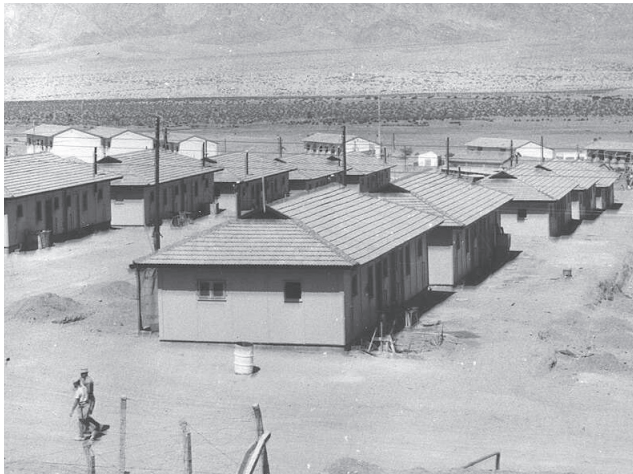


Figure 135. 2024. Source: Eilat's archive



Figure 134. 2024. Source: Eilat's archive

1956 PLAN



Drawing 54. Eilat Plan, 1956
Source: Author

FIRST ARCHITECTURE - BUILDINGS FOR LIVING

PITCHED ROOF HOUSING - ONE FLOOR

PITCH ROOF HOUSING - 1953



Figure 138. Eshel Neighbourhood, house number 145. Currently located on Yotam Road, 1953. (Source: Eilat's archive)

PITCH ROOF HOUSING WITH SHADING - 1953



Figure 136. 1952. (Source: National Library)

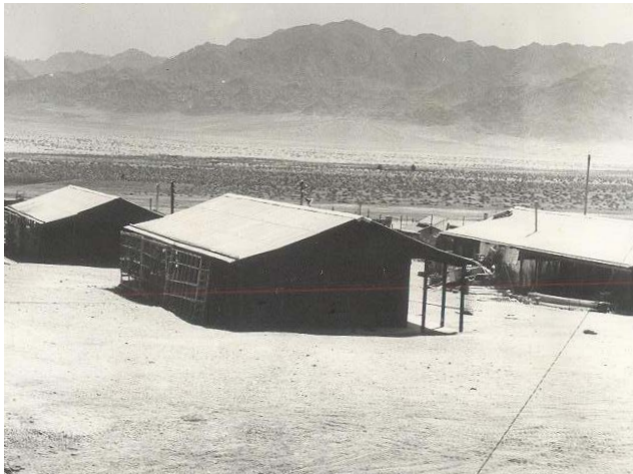
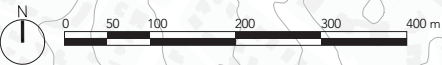


Figure 137. Settlements, early 1950s. (Source: Eilat's archive)

Unlike the flat-roofed concrete blocks that would follow, this cottage features a pitched tiled roof with significant overhangs. The exposed wooden rafters create a deep shadow zone, protecting the facade and the fenestration from direct solar gain. It is a moment of “soft” vernacular design before the “hard” brutalism of the 1960s took over.

1956 PLAN



Drawing 55. Eilat Plan, 1956
Source: Author

FIRST ARCHITECTURE - BUILDINGS FOR LIVING

PITCHED ROOF HOUSING - ONE FLOOR

1962



Figure 139. Housing construction, 1962. Source: National Library of Israel



Figure 142. 2007. Source: Eilat's archive

1957 - LIVING HOUSES



Figure 140. 1957 Source: Eilat Archive



Figure 141. Hamra House in at Ye'elim neighbourhood, 2010. Source: Eilat's archive

The shedding of the external plaster reveals the truth of the “Hamra” construction method. Beneath the whitewashed modernist aspiration lies a vernacular core of local stone and rubble masonry. This image documents a “return to the earth”, as the manufactured finish fails, the building materials re-merge with the desert landscape from which they were quarried. It is a moment of architectural autopsy, exposing the labour and materiality of the 1950s.

1968 PLAN



Drawing 56. Eilat Plan, 1968
Source: Author

FIRST ARCHITECTURE - BUILDINGS FOR LIVING

3.9.3 PITCHED ROOF BUILDINGS

1980



Figure 144. Renovation of buildings in the Dekel Neighbourhood, 1980. Source: Eilat's archive

2024



Figure 145. The Dekel Neighbourhood, 2024. Source: Eilat's archive

General View of the Settlement. A panoramic view of the developing town, showing a mix of single-story administrative barracks and a rare two-story structure (right). The wide spacing between buildings reveals the lack of a paved road network. A utility truck is parked on the unpaved clearing, while the dark, rugged ridge of the Eilat Mountains dominates the background, framing the small scale of the human intervention.

EARLY 1950S



Figure 143. Settlements, early 1950s. (Source: Eilat's archive)

1968 PLAN



Drawing 57. Eilat Plan, 1968
Source: Author

FIRST ARCHITECTURE - BUILDINGS FOR LIVING

3.9.4 FLAT ROOF BRUTALIST BUILDINGS

2018



Figure 148. . Source: National Library of Israel

1961



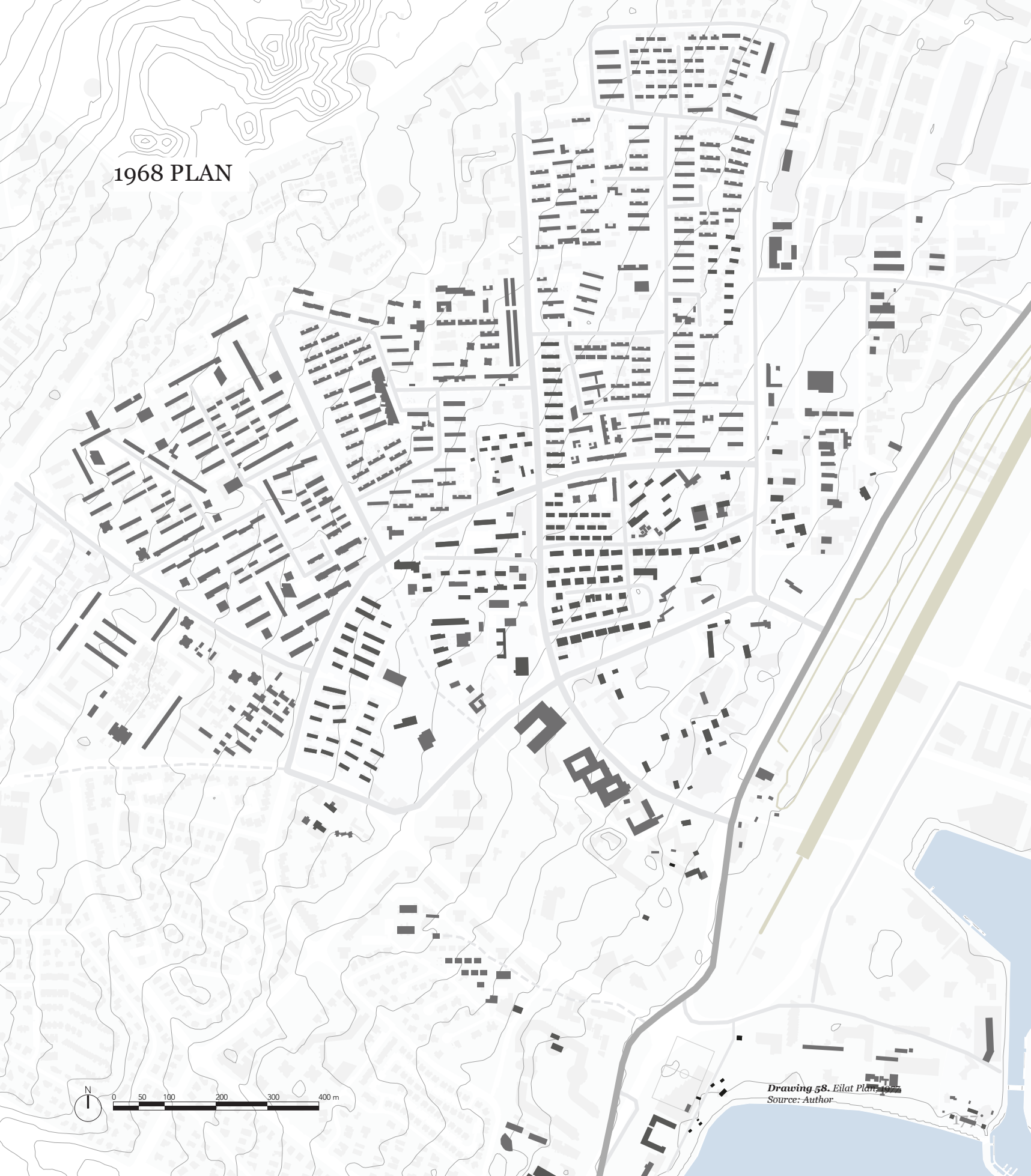
Figure 146. 1961. Source: National Library of Israel

1964



Figure 147. 1964. Source: National Library of Israel

1968 PLAN



Drawing 58. Eilat Plan
Source: Author

FIRST ARCHITECTURE - BUILDINGS FOR LIVING

FLAT ROOF BRUTALIST BUILDINGS

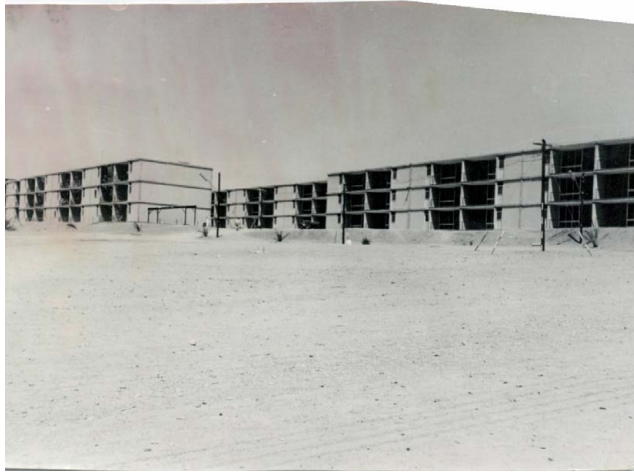


Figure 149. Construction of "tromin" buildings 1960. (Source: Eilat's archive)

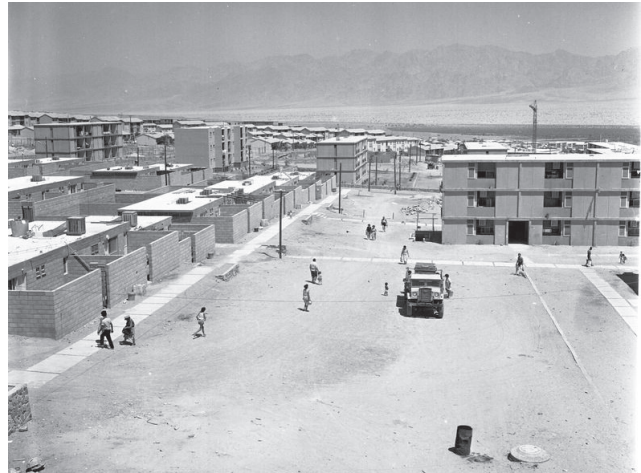
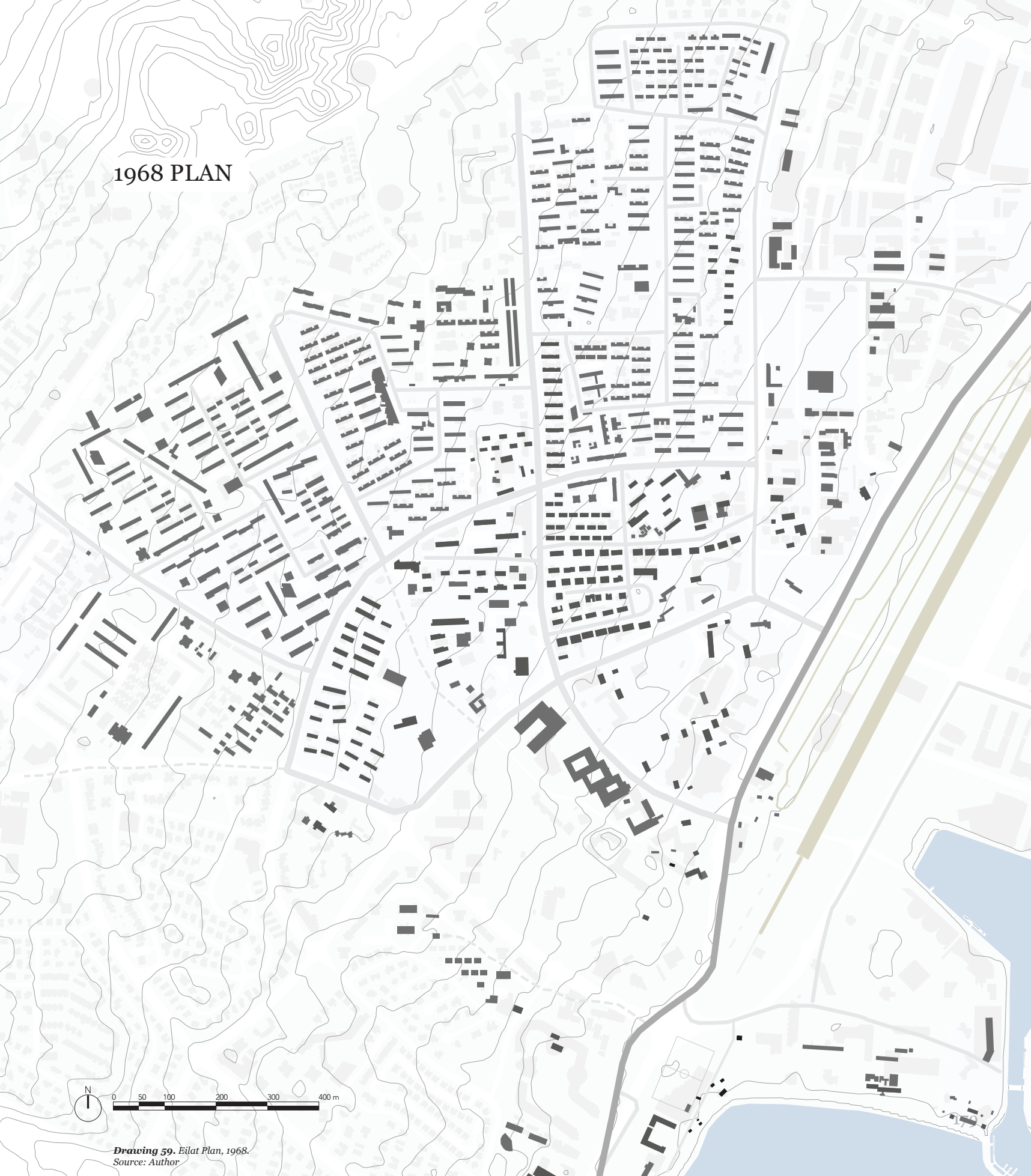


Figure 150. Figure x Housing construction, 1962. Source: National Library of Israel



Figure 151. "tromin" buildings 1970. Source: National Library of Israel

1968 PLAN



Drawing 59. Eilat Plan, 1968.
Source: Author

FIRST ARCHITECTURE - BUILDINGS FOR LIVING BUILDINGS



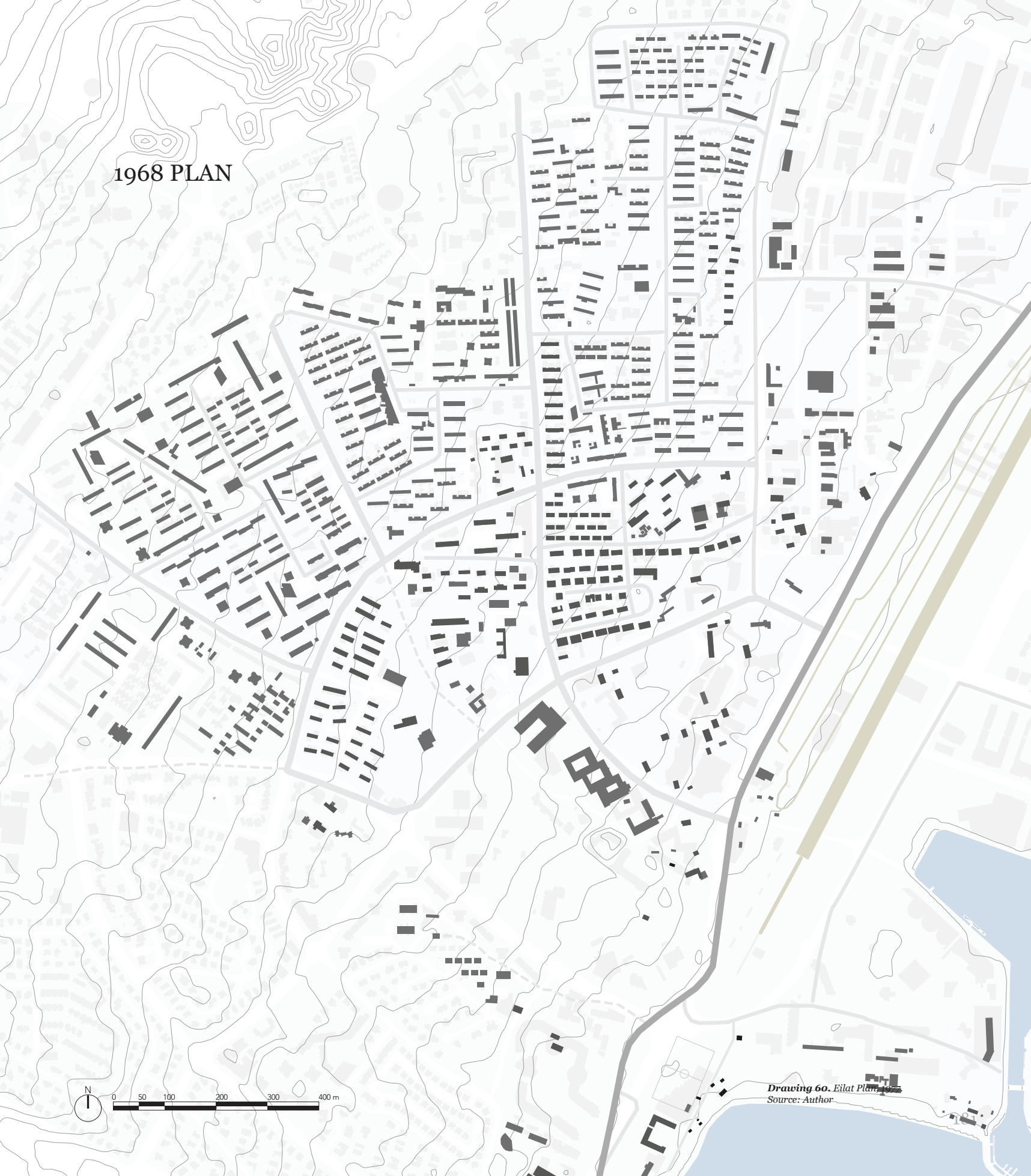
Figure 152. 1970 Source: Eilat Archive

Los Angeles Street - Habernowitz. 1970



Figure 153. Source: Eilat Archive

1968 PLAN



Drawing 60. Eilat Plan, 1968
Source: Author

FIRST ARCHITECTURE - PUBLIC BUILDINGS

3.9.4 PUBLIC BUILDINGS

BANK 1957

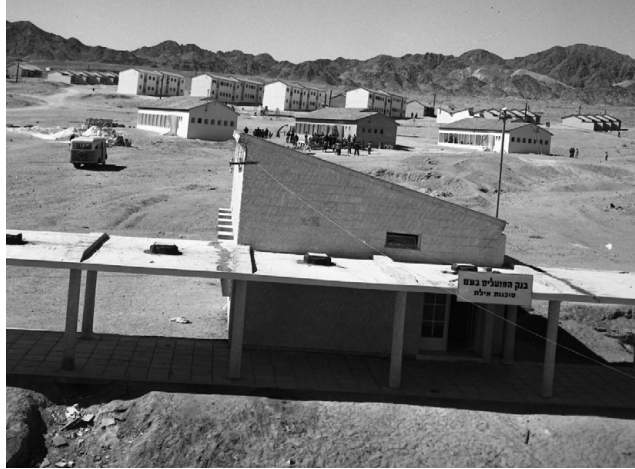


Figure 158. Bank, 1957. (Source: Eilat Archive)

BANK 1950S



Figure 157. Bank building, early 1950s. (Source: Eilat's archive)

POST OFFICE 1952



Figure 159. Post office, 1952. (Source: National Library of Israel)

MEDICAL CENTRE 1954



Figure 160. 1954 חולים קופת. (Source: Eilat Archive)

1956 PLAN



Drawing 61. Eilat Plan, 1956
Source: Author

FIRST ARCHITECTURE - PUBLIC BUILDINGS

CENTRAL BUS STATION 1964



Figure 161. Figure x Tuorist bus at the old Central Bus station, 1964. Source: Eilat's archive

1972 BUS STATION



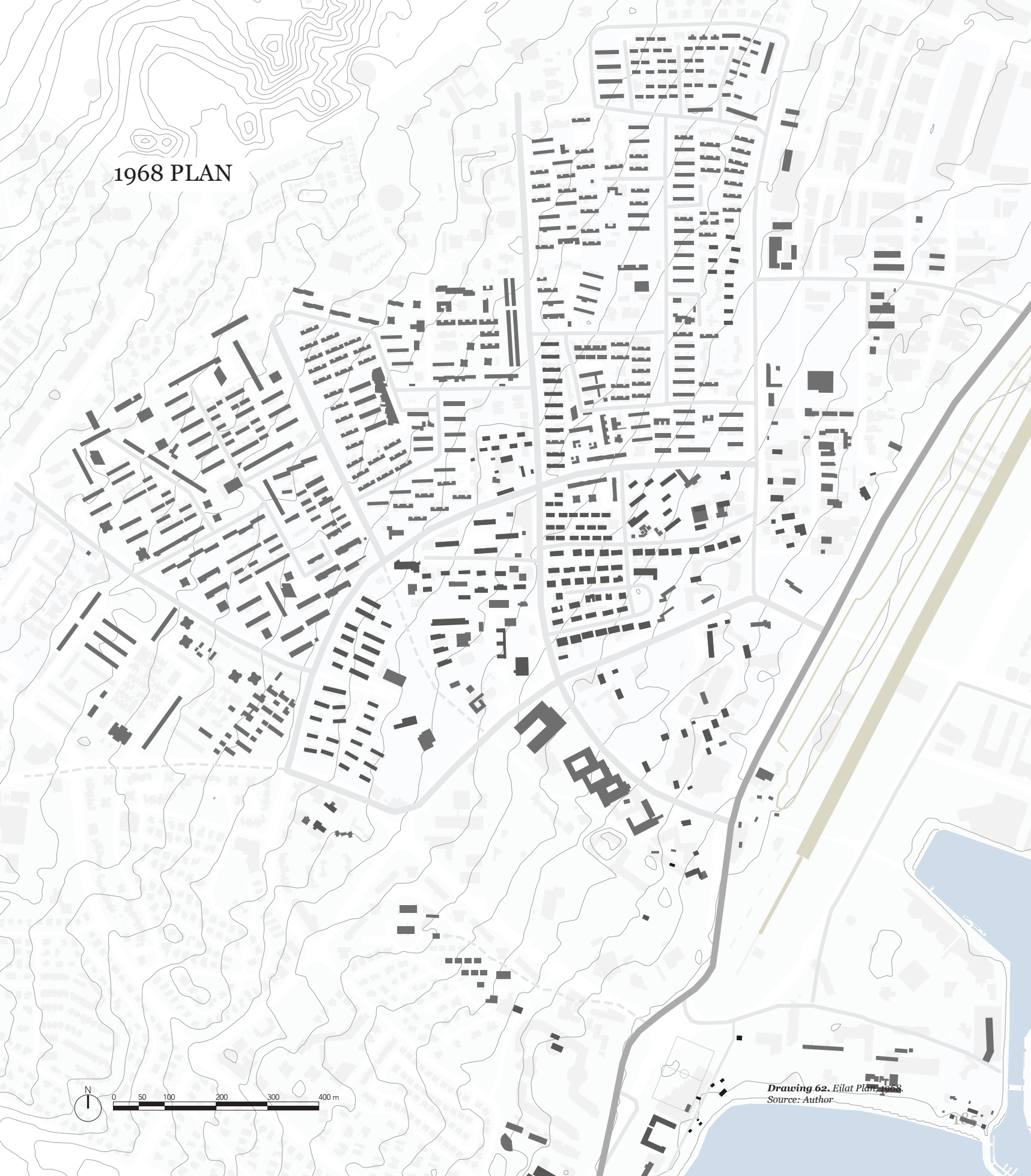
Figure 162. Figure x Thee old Central Bus station, 1972. Source: Eilat's archive

CENTRAL BUS STATION 1981



Figure 163. Central Bus station, 1981. (Source: National Library of Israel)

1968 PLAN



Drawing 62. Eilat Plan, 1968
Source: Author

FIRST ARCHITECTURE - PUBLIC BUILDINGS

3.9.5 RETAIL BUILDINGS

NEIGHBOURHOOD SHOPPING CENTRE 1963



Figure 164. Neighbourhood shopping centre, 1963. (Source: National Library of Israel)

GROCERY SHOP 1952



Figure 165. Grocery shop, 1952. (Source: National Library of Israel)

STORE 1969

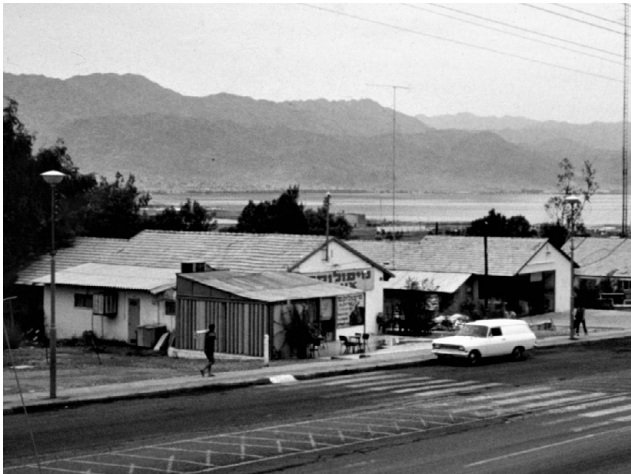


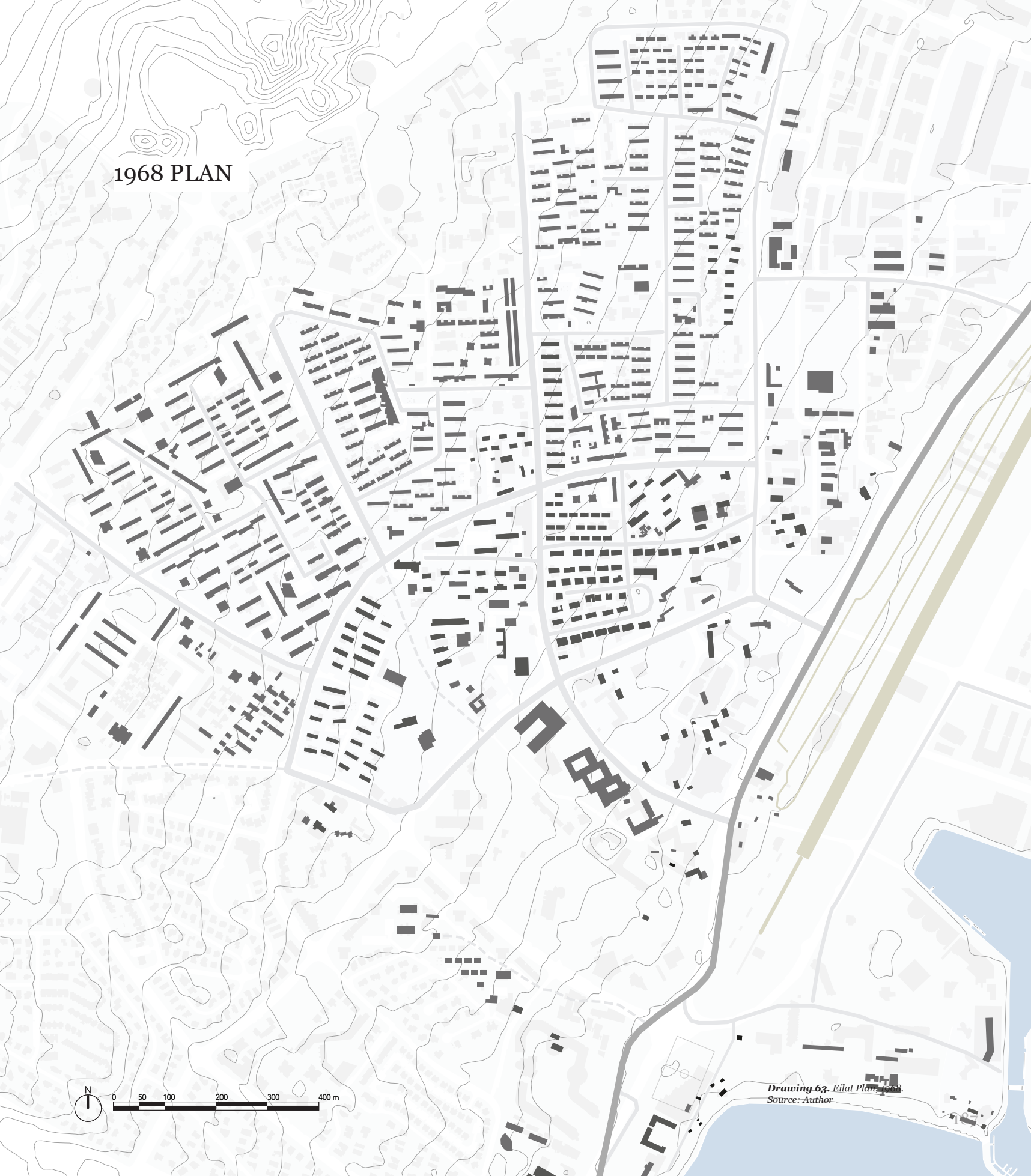
Figure 166. 1969. (Source: Eilat Archive)

STORE 1981



Figure 167. Stores, 1981. (Source: National Library of Israel)

1968 PLAN



Drawing 63. Eilat Plan, 1968
Source: Author



FIRST ARCHITECTURE - PUBLIC BUILDINGS

RETAIL BUILDINGS

BAKERY 1959



Figure 169. First bakery in the city, 1959. (Source: Eilat's archive)

BAKERY'S INTERIOR 1959



Figure 170. inside the first bakery in the city, 1959. (Source: Eilat's archive)

CONSTRUCTION SHOP 1964

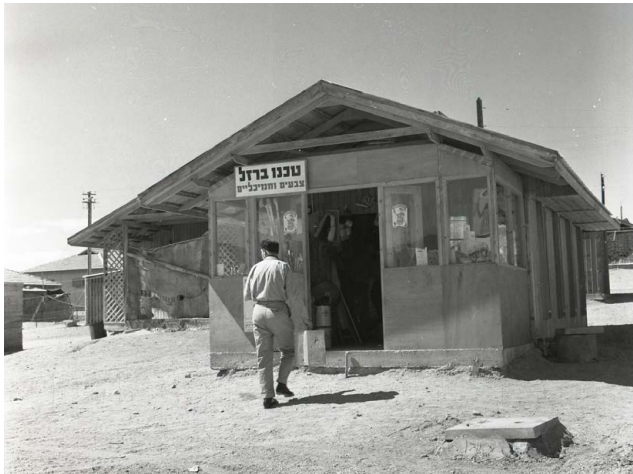


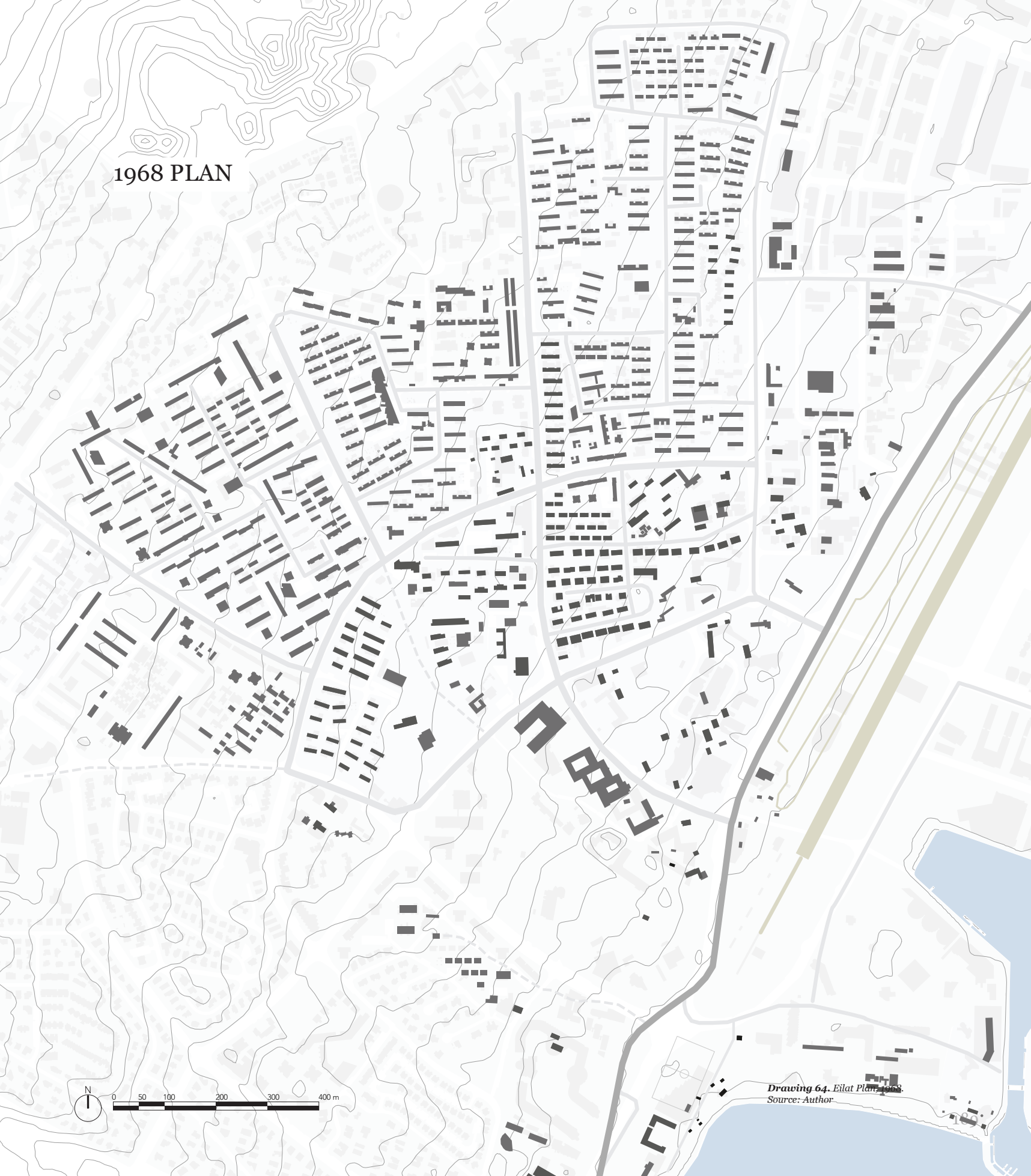
Figure 168. Tool store, 1964. (Source: National Library of Israel)

RESTAURANT - 1955



Figure 171. Restaurant in the city, 1955. (Source: Eilat's archive)

1968 PLAN



Drawing 64. Eilat Plan, 1968
Source: Author

FIRST ARCHITECTURE - PUBLIC BUILDINGS

RETAIL BUILDINGS

THE HISTADRUT BUILDING 1955



Figure 174. A 1950s Modernist building that served as the Histadrut headquarters (Source: Eilat's archive)

1955



Figure 175. The Histadrut Building 2024 (Source: Eilat's archive)

SOLEL BONE TOWER - THE FIRST HIGH TOWER

1970



Figure 172. Solel Bone Tower and Bank Ha'Poalim at Ha'Tmaim Boulevard, 1970. (Source: Eilat's archive)



Figure 173. Solel Bone Tower and Bank Ha'Poalim at Ha'Tmaim Boulevard, 2024. (Source: Author)

1968 PLAN



Drawing 65. Eilat Plan, 1968
Source: Author

FIRST ARCHITECTURE - PUBLIC BUILDINGS

RETAIL BUILDINGS

CITY LIBRARY 1983



Figure 177. Municipal Library, 1983 Source: Eilat Archive

The municipal library and the sculpture 'The Flowing One', purchased from Helena Rubinstein. 1983

COMMUNITY CENTRE



Figure 176. Community Centre, 1964. (Source: National Library of Israel)

1980



Figure 178. Figure x, 1980 Source: Eilat Archive

New parking lot and entrance to the municipal library and Rubin House (January) 1980

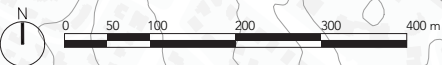
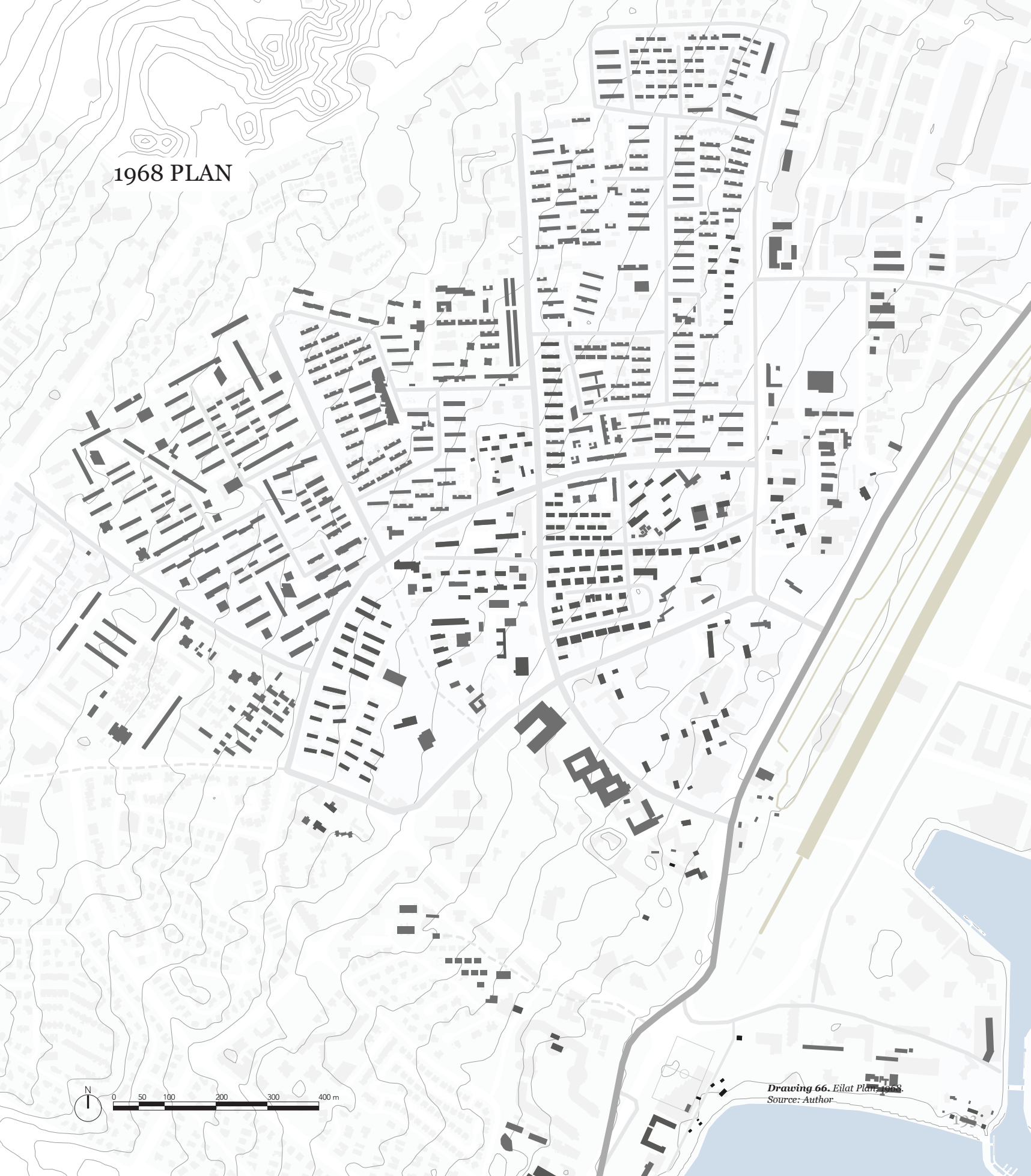
COMMUNITY CENTRE 1967



Figure 179. Community Centre, 1967 Source: Eilat Archive

Collier Community Centre, behind prefabs in the Arava neighbourhood. 1967

1968 PLAN



Drawing 66. Eilat Plan, 1968
Source: Author

FIRST ARCHITECTURE - PUBLIC BUILDINGS

RETAIL BUILDINGS

SYNAGOGUE 1959



Synagogue, 1959. (Source: Eilat's archive)

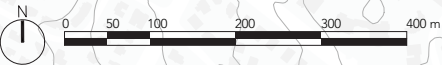
By 1959, the city began to prioritize the spiritual and social needs of its inhabitants alongside their physical housing. The synagogue stands as a distinct volume within the residential fabric, breaking the monotony of the standard housing units. Its placement on a slight elevation utilizes the topography to establish hierarchy, signalling the transition of Eilat from a transient labour camp to a structured, culturally functioning society.

SCHOOL BUILDING 1956



Figure 180. *School Building . (Source: Eilat's archive)*

1956 PLAN



Drawing 67. Eilat Plan, 1956
Source: Author

195

3.9 CITY LANDMARKS AND HERITAGE BUILDINGS

In Eilat, preservation efforts focus on various historical and culturally significant buildings, reflecting the broader national policy on architectural conservation in Israel. This policy, anchored in the Planning and Building Law, significantly impacts property owners, as buildings designated for preservation are subject to specific legal and tax considerations, potentially affecting their value and the compensation for owners (Nadlanews, 2022).

Eilat is home to diverse preserved structures, ranging from historic hotels and shopping centers to public buildings and landmarks like the Eilat Lighthouse and the Underwater Observatory Park. These preservation efforts help maintain the city's historical fabric and tourist appeal while providing educational and community involvement opportunities through national service at heritage sites (Shimur, 2024).

Moreover, in the context of private property, there's an increasing trend towards renovating older residential buildings to meet modern building standards, improving both aesthetics and safety. These renovations can significantly enhance property values, making them a worthwhile investment despite the costs (Yesodot 77, 2024).

HERITAGE BUILDINGS

3.9.1 UMM RASHRASH - THE CITY SYMBOL

Umm Rashrash, originally a police station of the mandate police, was located in five clay huts on the northern shore of the Gulf of Eilat. Throughout Israeli governance, this area evolved into what is now the city of Eilat. By the 1960s, most of the original buildings had been demolished, leaving only one remaining structure. This surviving building was declared a heritage site in 2014, prompting conservation efforts to preserve this historical site. The transition of Umm Rashrash from a simple police outpost to a part of a bustling city highlights significant aspects of the region's development and heritage preservation.

1946- UMM RASHRASH WAS UNDER THE BRITISH MANDAT



Figure 182. Umm Rashrash with British flag, 1946. (Source: Eilat's Ben Yosef Yosi)

1946



Figure 181. Aerial View of Eilat, 1946. Source: Eilat's archive

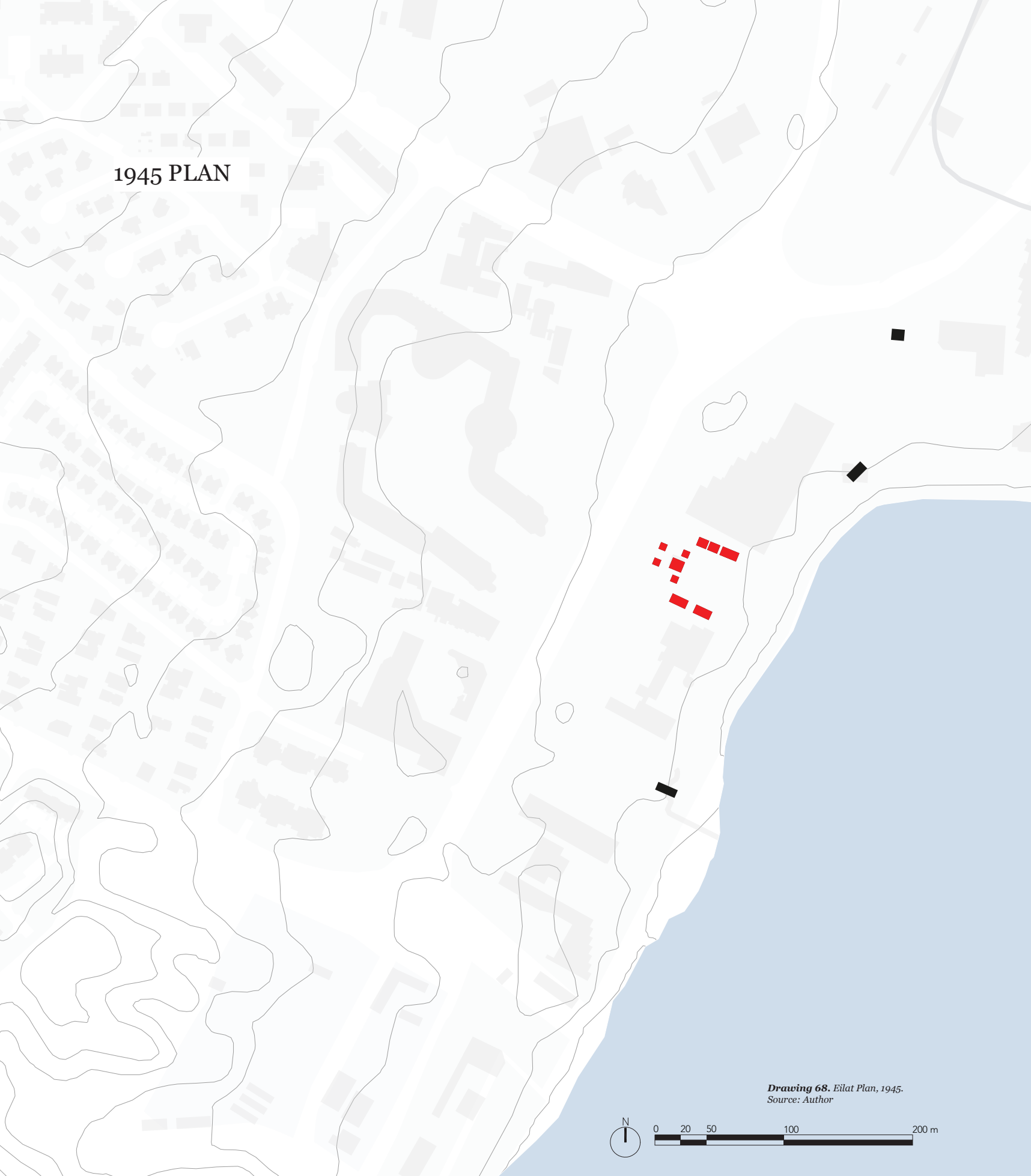
1946- The city had only the British military buildings

UMM RASHRASH BRITISH COLONIZE POLIC STATION - 1949



Figure 183. Umm Rashrash with British flag, 1949. (Source: Kofman Moshe)

1945 PLAN



Drawing 68. Eilat Plan, 1945.
Source: Author



HERITAGE BUILDINGS

1949 - UMM RASHRASH BECAME TO BE EILAT

THE INK FLAG - MARCH 10, 1949



Figure 186. Umm Rashrash, 1949. Source: Eilat's archive



Figure 187. Aerial view of Eilat, 1949. Source: Eilat's archive

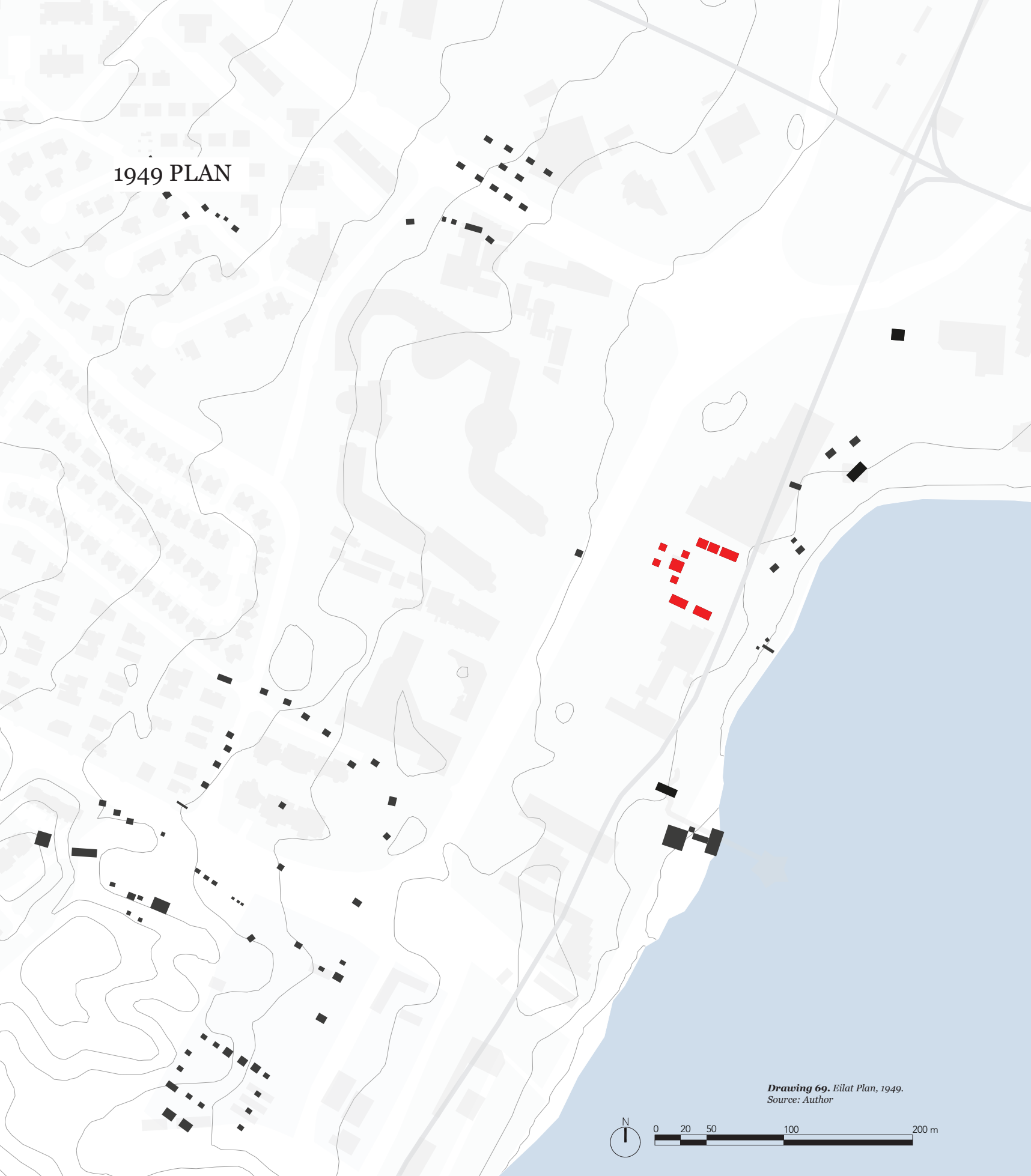


Figure 184. First Israel's prime minister at Umm Rashrash, 1940. Source: Eilat's archive

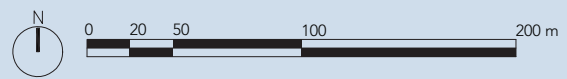


Figure 185. Umm Rashrash Buildings, 1947. Source: Eilat's archive

1949 PLAN



Drawing 69. Eilat Plan, 1949.
Source: Author



HERITAGE BUILDINGS

UMM RASHRASH

1953 -NEW FANCTION -UMM RASHRASH HUT
AS A CARPENTRY SHOP

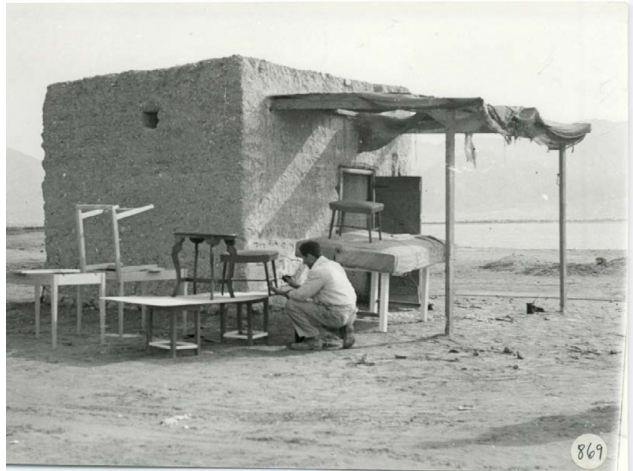


Figure 191. Umm Rashrash hut as a carpentry shop, 1953. (Source: Eilat's archive)

1965 - NEW FUNCTION - UMM RASHRASH HUT
AS A FISHERMEN'S HUY



Figure 190. Umm Rashrash, 1965. Source: Eilat's archive

1965 - Umm Rashrash hut as a Fishermen's Hut

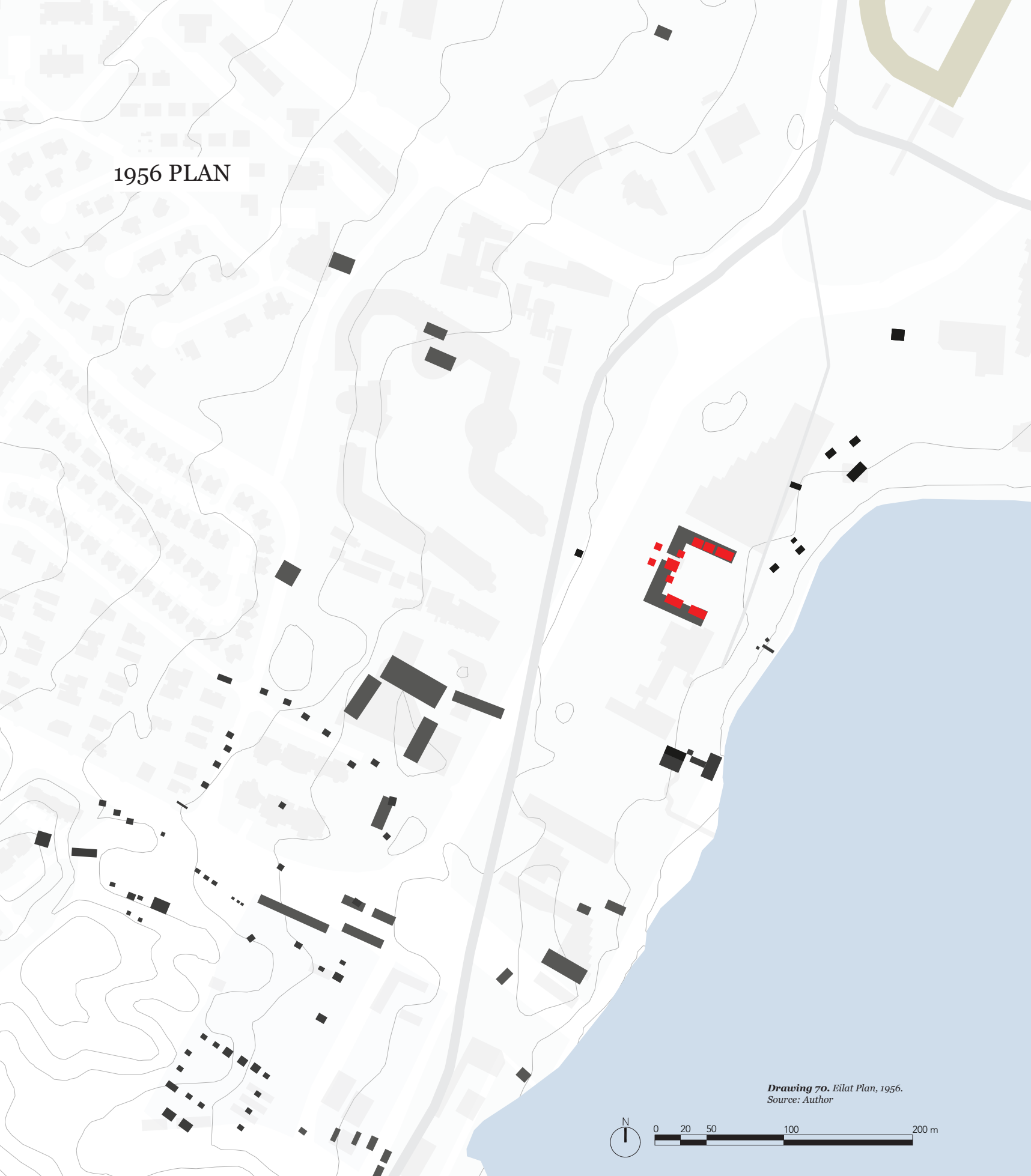
From Outpost to Workshop. This image records the moment of transition from military occupation to civilian commerce. The structure, originally part of the Umm Rashrash police station, is repurpose here as a carpentry shop in the early 1950s and as a fishermen's hut in 1965. This act of adaptive reuse signals the birth of the local economy; the furniture seen scattered on the sand is not imported, but manufactured in situ, utilizing the ruins of the previous regime as a functional shell for new production.

1963



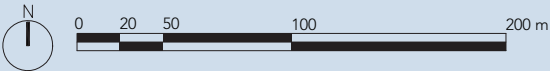
Figure 192. Umm Rashrash, 1963. (Source: National Library of Israel)

1956 PLAN



Drawing 70. Eilat Plan, 1956.

Source: Author



HERITAGE BUILDINGS

DEMELISHING SOME OF THE HUTS OF UMM RASHRASH

1969 - DEMOLISHING SOME OF THE HUTS



Figure 194. Umm Rashrash demolition on northern hut, 1969. (Source: Eilat's archive)

1969



Figure 195. Umm Rashrash, 1969. (Source: Eilat's archive)

This image captures the demolition of the northern hut in Umm Rashrash in 1969, one of the last remaining structures from the original British Mandate police station established in the early 20th century. The huts, constructed from mud bricks, symbolized the modest beginnings of what would later become the city of Eilat. Their demolition marked a pivotal transition from the area's historical military and policing significance to its development as a modern urban centre and tourist destination. This act also sparked discussions on heritage preservation versus urban development in Israel's southernmost city.

1975 - THE REMAINING HUTS

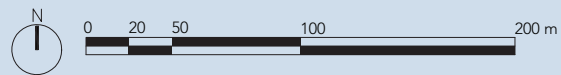


Figure 193. Umm Rashrash, 1975. (Source: Eilat's archive)

1968 PLAN



Drawing 71. Eilat Plan, 1956.
Source: Author



HERITAGE BUILDINGS

UMM RASHRASH IS A SYMBOL OF THE CITY AND A PIAZZA WAS BUILT WITH THE LAST HUT OF UMM RASHRASH

THE REMAINING HUTS



Figure x Umm Rashrash huts, 1977. Source: Eilat's archive

1977- Umm Rashrash with three huts.

1980S

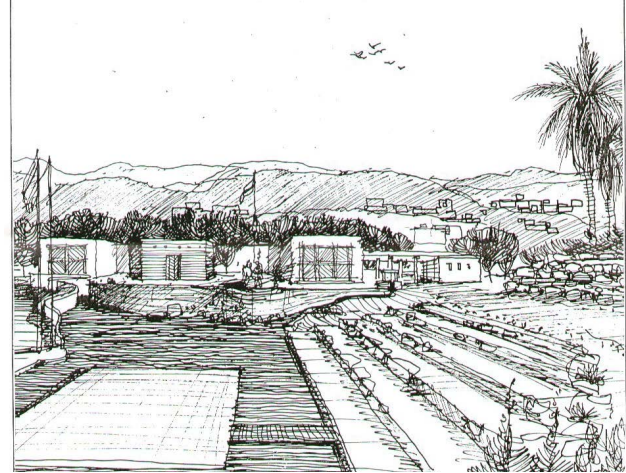


Figure x Umm Rashrash development sketch, 1984-1989. Source: Eilat's archive

1980 - UMM RASHSRASH RENOVATION PLAZA PLAN

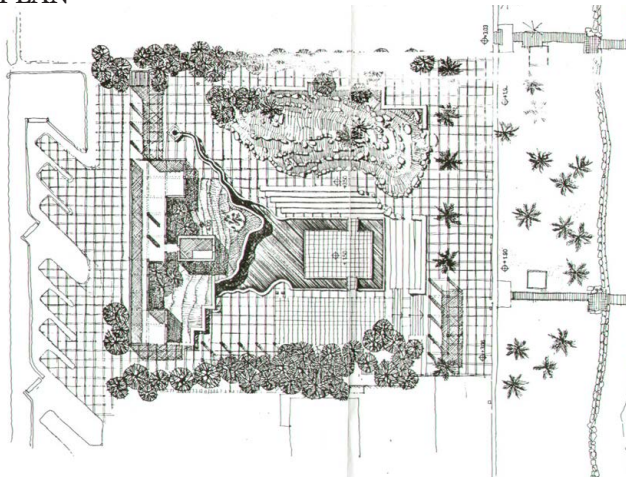


Figure x Umm Rashrash development plan, 1984- 1989. Source: Eilat's archive

1980S - UMM RASHSRASH RENOVATION PLAZA SECTION

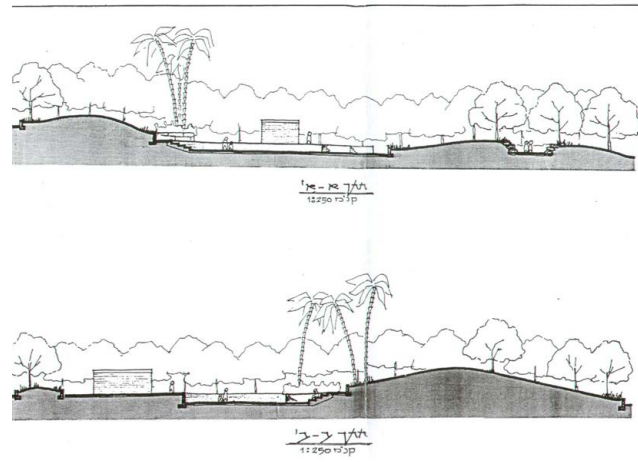
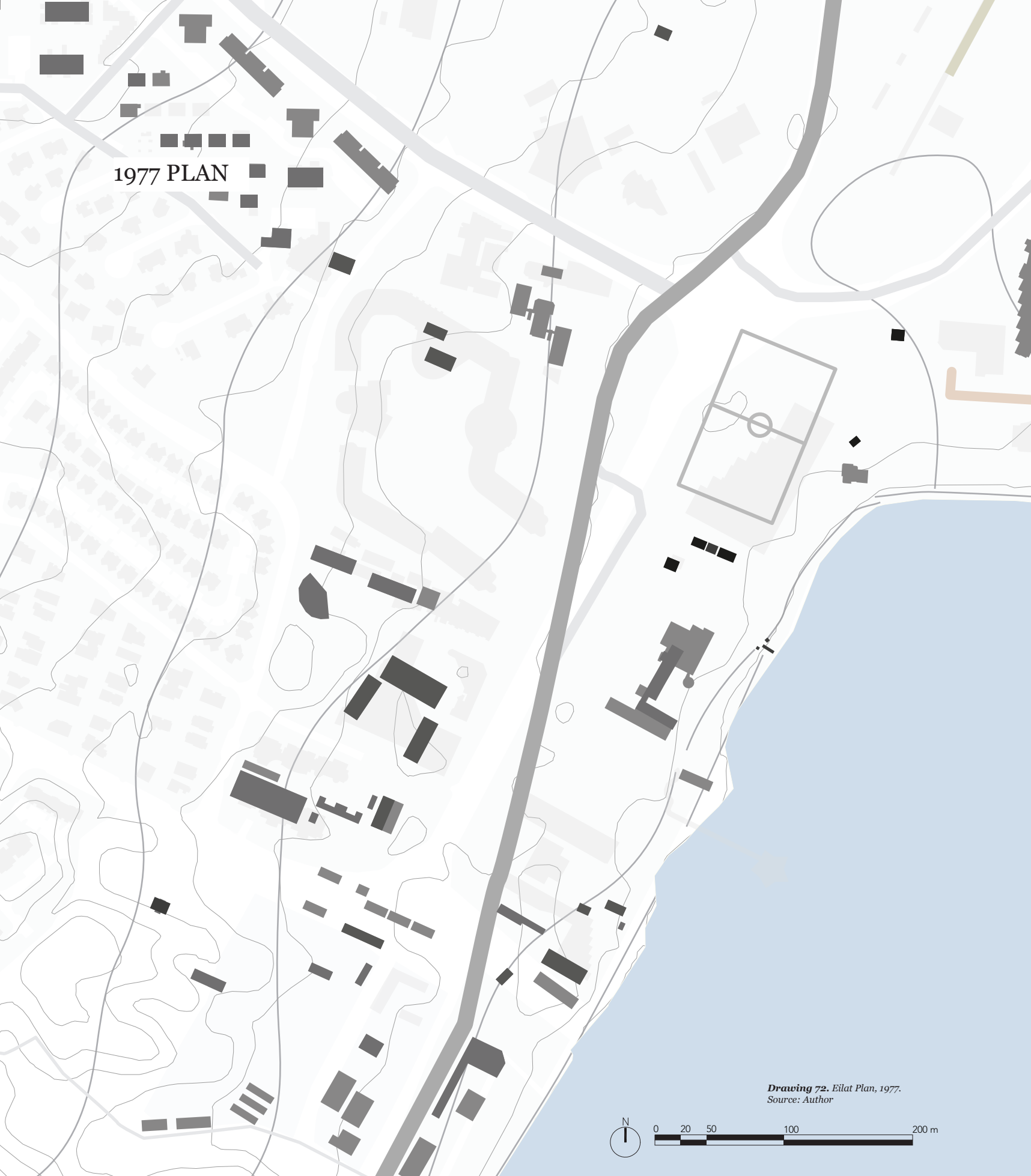
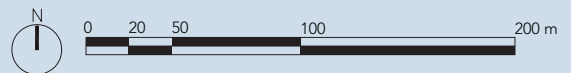


Figure x Umm Rashrash development Section plan, 1984- 1989. Source: Eilat's archive

1977 PLAN



Drawing 72. Eilat Plan, 1977.
Source: Author



HERITAGE BUILDINGS

THE LAST MEMORY - UMM RASHRASH AS HERITAGE

2021



Figure x Aerial view of Umm Rashrash, 2021. Source: Eilat's archive

2024



Figure x Umm Rashrash's last hut, 2021. Source: Eilat's Author



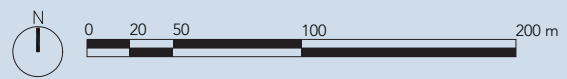
Figure x Umm Rashrash, 1949. Source: Eilat's archive

Umm Rashrash, 1949. (Source: Wikimedia)

2000 PLAN



Drawing 73. Eilat Plan, 2000.
Source: Author



HERITAGE BUILDINGS

3.9.2 WILLIAM HOUSE (BET WILLIAMS) - HOUSE IN THE MIDDLE OF THE DESERT

Williams House, established in 1939, is a historically significant site located at the entrance of the Shlomo River. Constructed during the mandate period from local granite stones, this structure was built by Major Leonard Williams, a British geologist. Major Williams was not only deeply involved in the commercial mining of rock shale and barite for the ceramic industry but also served as a British intelligence officer. His role extended to espionage activities, collecting strategic

data in the Gulf of Eilat and Aqaba for the British Admiralty, the authority overseeing the Royal Navy. In 1949, amid unfolding geopolitical shifts, Williams abruptly abandoned the site and relocated to Aqaba, marking a dramatic end to his tenure at the location. This site encapsulates a unique blend of geological significance and historical intrigue, reflecting the complex interplay of natural resources and international espionage.



Figure 197. Bet William, 1960. Source: National Library of Israel



Figure 196. Bet William, 2024. Source: Amotz Holender Tal

1945 PLAN

UMM RASHSRH

WILLIAM HOUSE

Drawing 74. Eilat Plan, 1945.
Source: Author



HERITAGE BUILDINGS

3.9.3 RECHTER CENTRE 1960 BY ZEEV RECHTER

The Rechter Centre, designed by the prominent architect Zeev Rechter, was officially opened in 1959, marking its place as the first commercial hub in Eilat. This architectural landmark is distinguished by its vaulted roofs, which are not only aesthetically significant but also functionally represent the local spirit and the arid desert climate. The design exemplifies how architecture can embody and respond to environmental

and cultural contexts. Subsequently, the northern expansion of the centre introduced additional facilities, including shops, offices, and banks, further cementing its role as a central economic node in the region. This development reflects the dynamic nature of urban architectural projects where initial constructions often set the stage for later enhancements and expansions.

RECHTER CENTRE 1960



Figure 198. Rechter Centre, 1960. Source: Eilat's archive

RECHTER CENTRE 2024

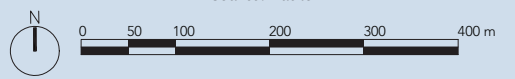


Figure 199. Rechter Centre, 2024. Source: Author

1968 PLAN



Drawing 75. Eilat Plan, 1968.
Source: Author



HERITAGE BUILDINGS

RECHTER CENTRE 1960 BY ZEEV RECHTER

INTERNATIONAL STYLE INFLUENCE



Figure 202. Rechter Centre, 1960. Source: Eilat's archive



Figure 203. Rechter Centre, 1960. Source: Eilat's archive



Figure 204. Rechter Centre, 1960. Source: Eilat's archive

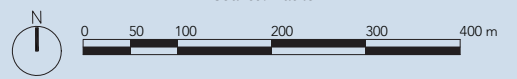


Figure 205. Rechter Centre, 1960. Source: Eilat's archive

1968 PLAN



Drawing 76. Eilat Plan, 1968.
Source: Author



HERITAGE BUILDINGS

RECHTER CENTRE 1960 BY ZEEV RECHTER

1960



Figure 206. Rechter Centre's Arial View, 1960. (Source: Eilat's archive)



Figure 207. Rechter Centre's Arial View, 1974. (Source: Eilat's archive)



Figure 208. Rechter Centre's Celebration, 1981. (Source: Eilat's archive)



Figure 209. Rechter Centre's Arial View, 1982. (Source: Eilat's archive)



1977 PLAN

Drawing 77. Eilat Plan, 1977.

Source: Author



HERITAGE BUILDINGS

RECHTER CENTRE 1960 BY ZEEV RECHTER



Figure 210. Rechter Centre's Aerial View, 2020. Source: Eilat's archive

INNER PIAZZA



Figure 212. Rechter Centre patio, 2024. Source: Author



Figure 211. Rechter Centre, 2024. Source: Author

The centre remain functioning however it is not anymore the main centre of the city.

2020 PLAN



Drawing 78. Eilat Plan, 2020.
Source: Author



0 50 100 200 300 400 m

HERITAGE BUILDINGS

3.9.4 MUSEUM OF MODERN ART

The Museum of Modern Art, inaugurated in 1958 by the founders of the Ghetto Fighters House, was conceptualized as a space “to collect the tears of the Jewish people.” This initiative sought to preserve and exhibit art produced during and about the Holocaust, thereby memorializing this pivotal historical period through artistic expression. Over the years, the museum hosted numerous exhibitions that showcased the Holocaust and modern art, reflecting the evolving interpretations and remembrances of these events.

Currently, the premises serve as a youth centre and are situated near Gan Fardak, symbolizing a transition from a site of commemoration to a hub of contemporary youth engagement. This transformation underscores a broader cultural shift towards integrating historical awareness with present-day educational and community activities.



Figure 215. Museum of Modern Art Entrance, 2024. Source: Eilat's archive

1960



Figure 214. Museum of Modern Art Entrance, 1960. Source: Eilat's archive

TITLE

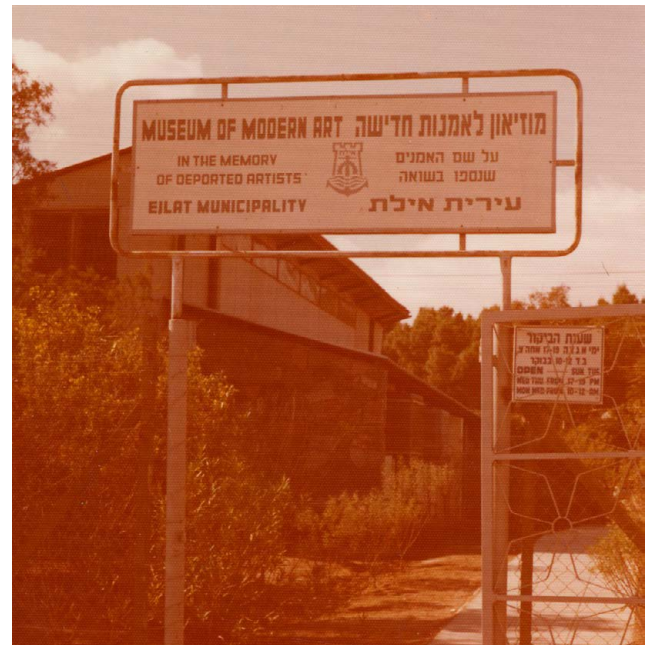
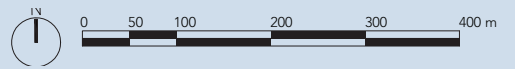


Figure 213. Museum of Modern Art Entrance. Source: Eilat's archive

1968 PLAN



Drawing 79. Eilat Plan, 1968.
Source: Author



HERITAGE BUILDINGS

3.9.5 EILAT AMPHITHEATRE

The Eilat Amphitheatre was established in 1949 by the Corps of Engineers, originally featuring approximately 200 seats. This venue quickly became a socio-cultural hub for both soldiers and local residents. By October 1950, the amphitheatre had hosted its first theatrical performance, marking the beginning of its role as a pivotal community gathering space. Over the years, it was the site of Independence Day celebrations and various public gatherings. Reflecting its growing significance in the community, the amphitheatre underwent an expansion in the 1960s, increasing its capacity to 1,000 seats. It is situated strategically behind the Club Hotel, enhancing its accessibility and prominence within the local urban landscape. This historical development of the Eilat Amphitheatre illustrates its evolution from a modest venue to a central figure in the cultural and social life of the city.

1969

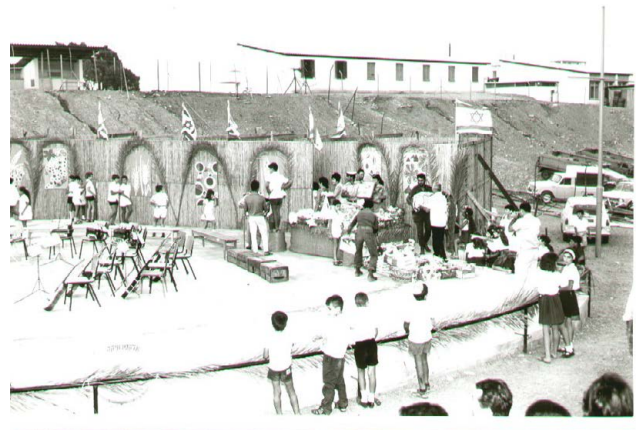


Figure 216. Ceremony at the Amphitheatre, 1969. (Source: Eilat's archive)

1960S

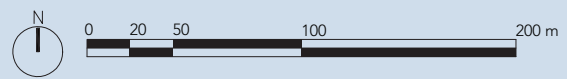


Figure 217. Amphitheatre, 1960s. (Source: Eilat's archive)

1968 PLAN



Drawing 80. Eilat Plan, 1968.
Source: Author



HERITAGE BUILDINGS

EILAT AMPHITHEATRE

1980



Amphitheatre, 1980. (Source: Eilat's archive)

1958



First Concert of the philharmonic. (1958. Source: Eilat's archive)

1983



Amphitheatre Renovation, 1983. (Source: Eilat's archive)

1977 PLAN



Drawing 81. Eilat Plan, 1977.
Source: Author



HERITAGE BUILDINGS

3.9.6 ALMOG SCHOOL - FIRST PRIMARY SCHOOL

Constructed in 1955, the Almog School proudly stands as the inaugural educational institution in the city, strategically located near HaTamirim Boulevard in the Ha'eshel neighbourhood, adjacent to both the city hall and the Hapoalim council. This elementary school not only served as a cornerstone for education in the area but also symbolised the foundational role in nurturing the initial generations who would go on to build and develop the city. As the community expanded, numerous other educational facilities were established, yet Almog School remains emblematic of the city's educational heritage, marking a significant milestone in its civic and cultural development.

1955



Figure 218. Almog School, 1955. Source: Eilat's archive

1959



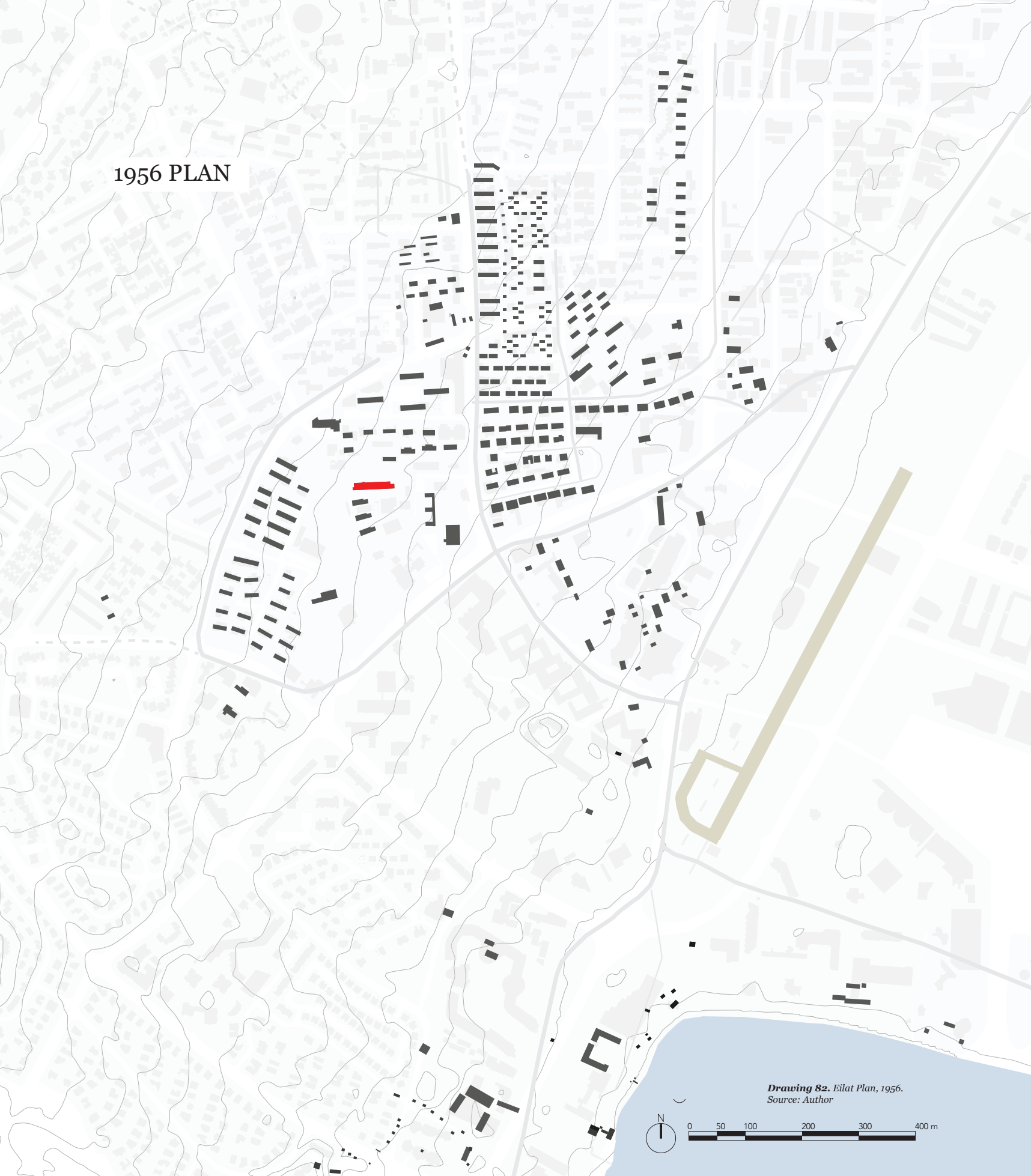
Figure 219. Northern facade of Almog School, 1959. (Source: Eilat's archive)

1968

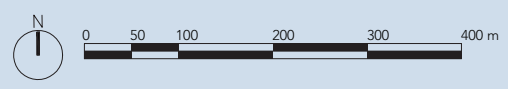


Figure 220. Almog School, 1968. Source: Eilat's archive

1956 PLAN



Drawing 82. Eilat Plan, 1956.
Source: Author



HERITAGE BUILDINGS

ALMOG SCHOOL - FIRST PRIMARY SCHOOL

1968?

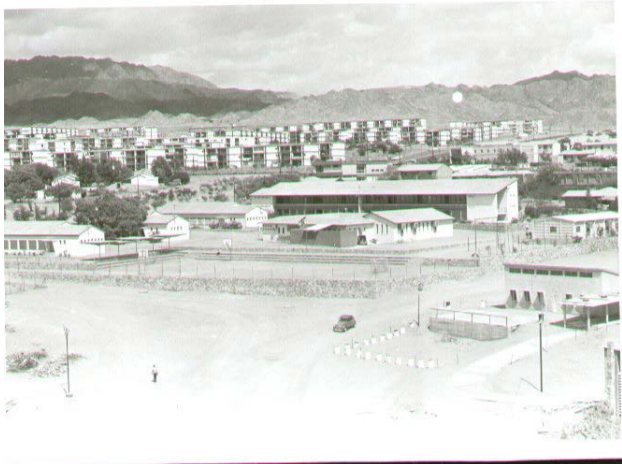


Figure 221. Aerial view of Almog School, 1968. Source: Eilat's archive

1967



Figure 224. Almog School, 1967. Source: National Library of Israel

2021



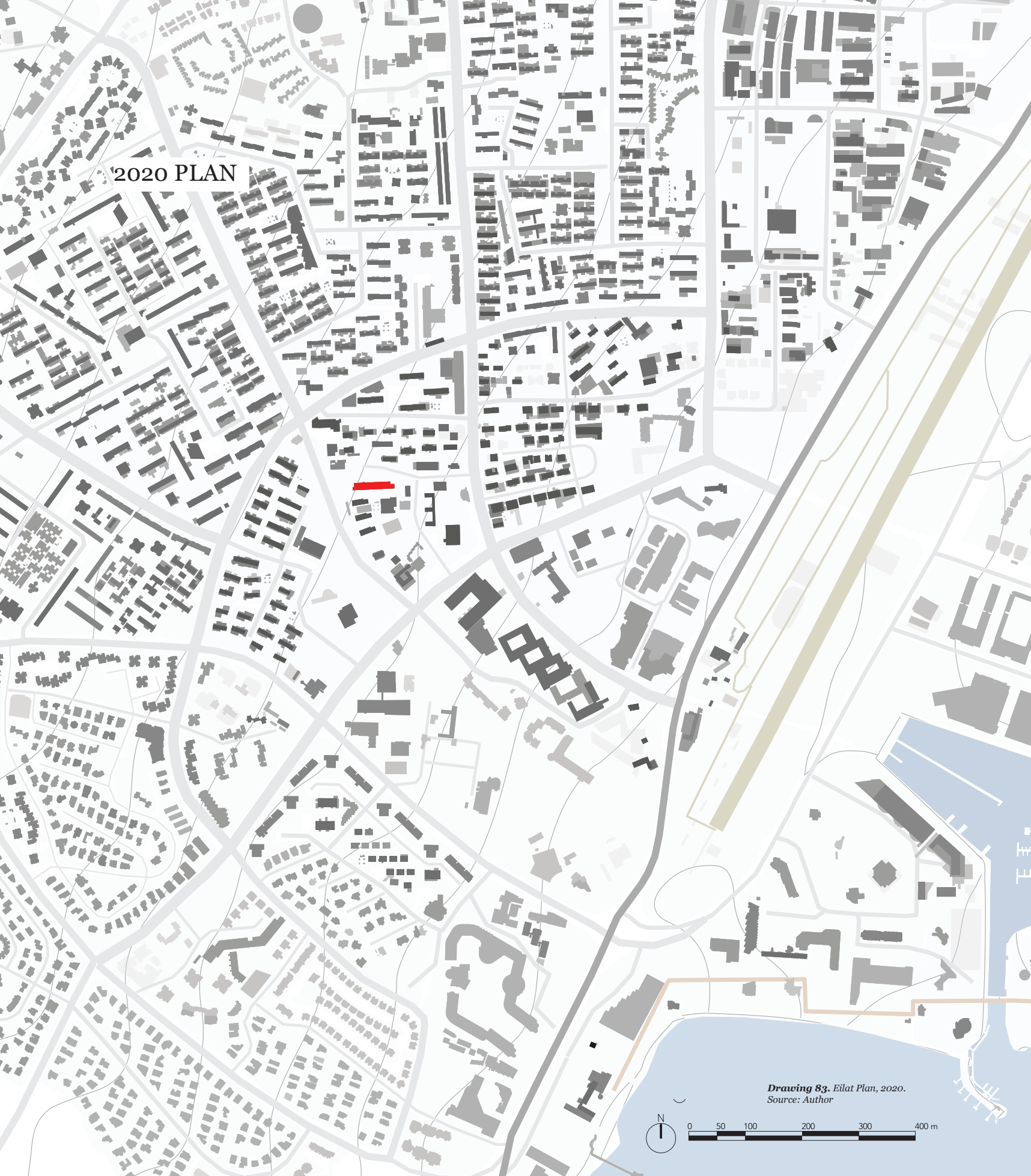
Figure 223. Almog School Entrance, 2021. Source: Google Map

2024



Figure 222. Almog School Entrance, 2024. Source: Google Map

2020 PLAN



Drawing 83. Eilat Plan, 2020.
Source: Author

