

THE THERMAL OASIS

An oasis shaped by waves, between nature and artifice

"In this case the relation between city and sea essentially consists in the meeting - or it would be better to use the term 'clash' - between the urban fabric, whatever it is, and an element, in a certain sense exceptional, such as the coast. According to this approach, the 'unprecedented' encounter between rule and exception, between artificial and natural, between permanent and ephemeral, between fixed and mobile, would take place on the coast."

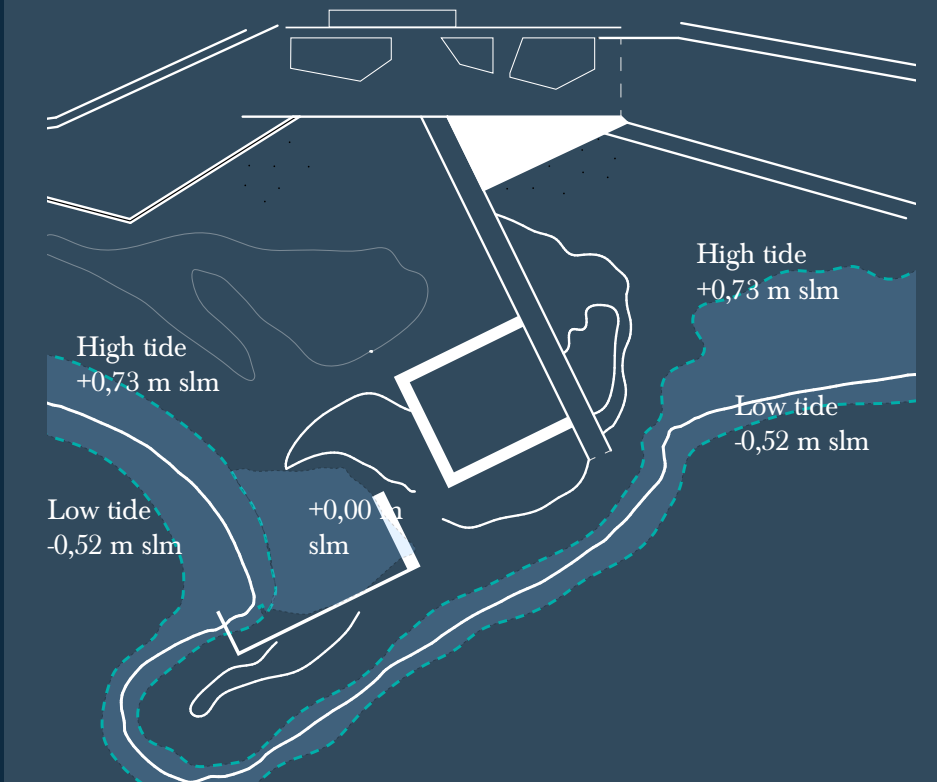
And so, while this space is being shaped by the tide, the path of the promenade wants to be part of it, descending into the dunes and carving out its space in an almost hidden building, the staircase of a pavilion, which opens towards the cliff, without breaking through, following the shape of the broken terraces, but which is projected explicitly and directly towards the pools. Almost a transposition of an urban element which, in addition to a direction and a direction, also assumes a specific direction: not only the sea entering the city, but also 'from the city to the sea'.

An oasis of peace and contemplation of the landscape

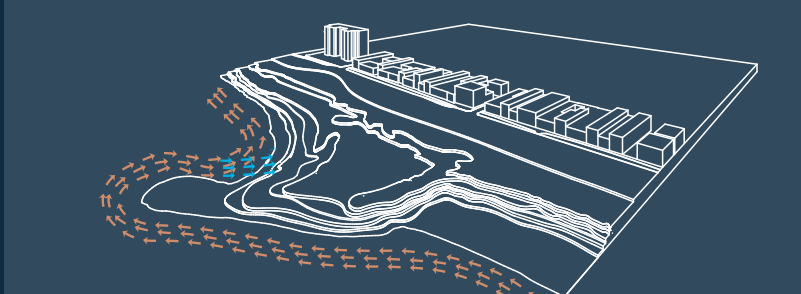
We are now on the seafront, upon arriving from the path from the mountains, after having traveled the entire waterfront or having arrived following the imaginary flow of the Riera di Vilassar. The vegetation also wants to mark and emphasize this resting place and, by creating a strong relationship with the element of salt water, it becomes an Oasis. Salt, water, and therapeutic plants: scents, colors and sounds give rise to an atmosphere of total relaxation. Through the choice of colors of the essences, it is also possible to create moods, focal points, to attract attention to a particular element. The dune vegetation remains constant throughout the project but it is only in this part of the coast that a therapeutic type of vegetation is used, to guarantee a feeling of natural well-being, peace, calm and deep contemplation of the sea.

Studies and criteria for the positioning of the tide pool

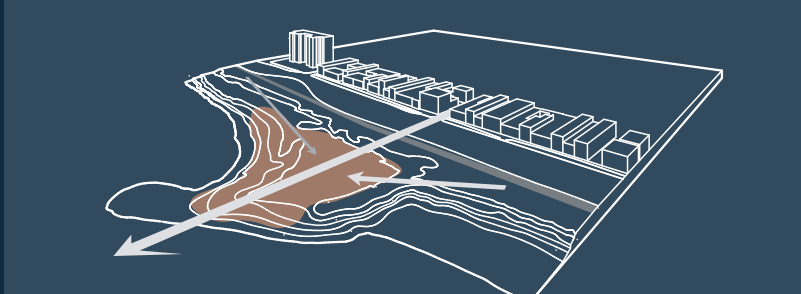
Main goal: modeling the soil in a non-invasive way, as if it were the movement of the waves themselves to shape it, insinuating the inlets of the cliff and creating space for the natural pools, the dunes and the pavilion hidden in the dunes.



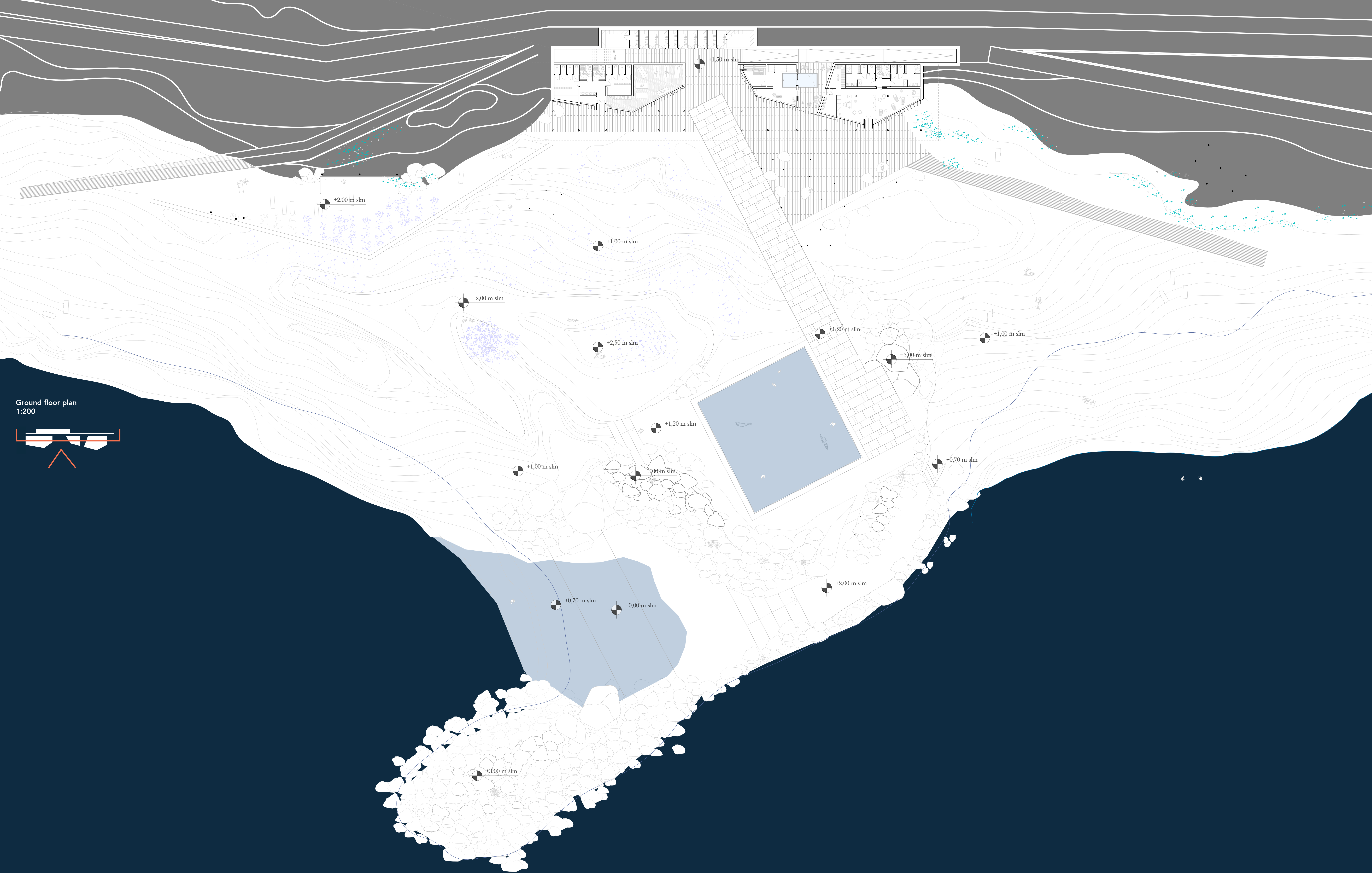
1. High tide and slow tide rising



2. Main trend of the streams



3. Strong relation with the urban fabric



Ground floor plan 1:200



Facade of the Pavilion and context 1:200

