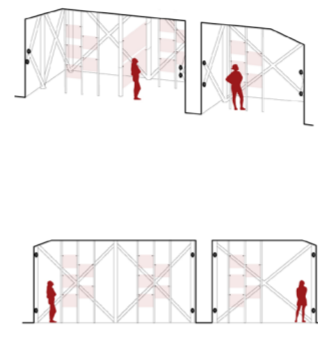
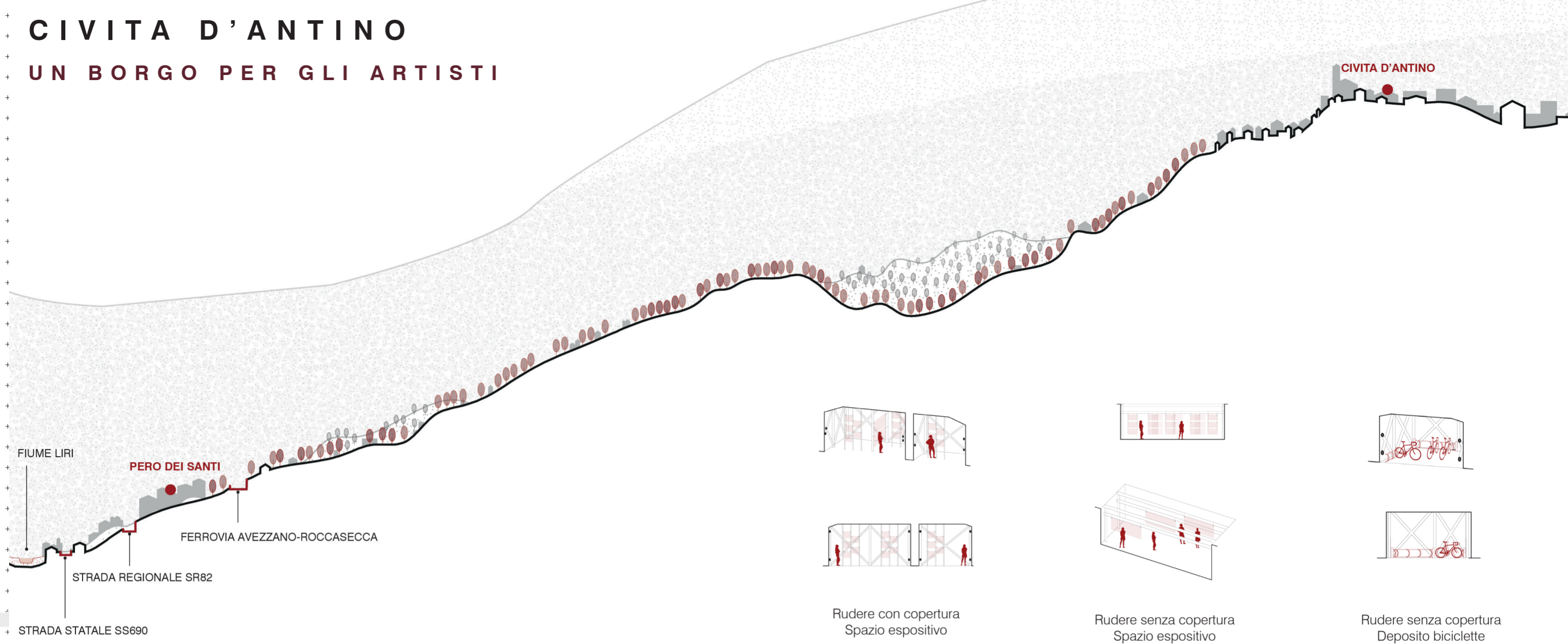


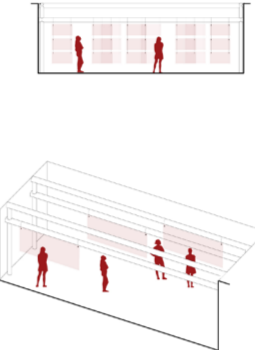
CIVITA D'ANTINO

UN BORGO PER GLI ARTISTI

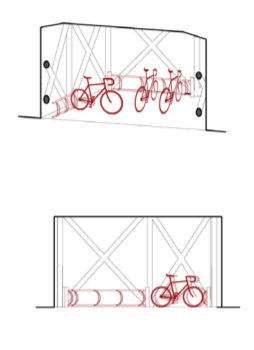
Laureandi: Francesco Airoidi, Federica Savio, Valentina Scaraffia



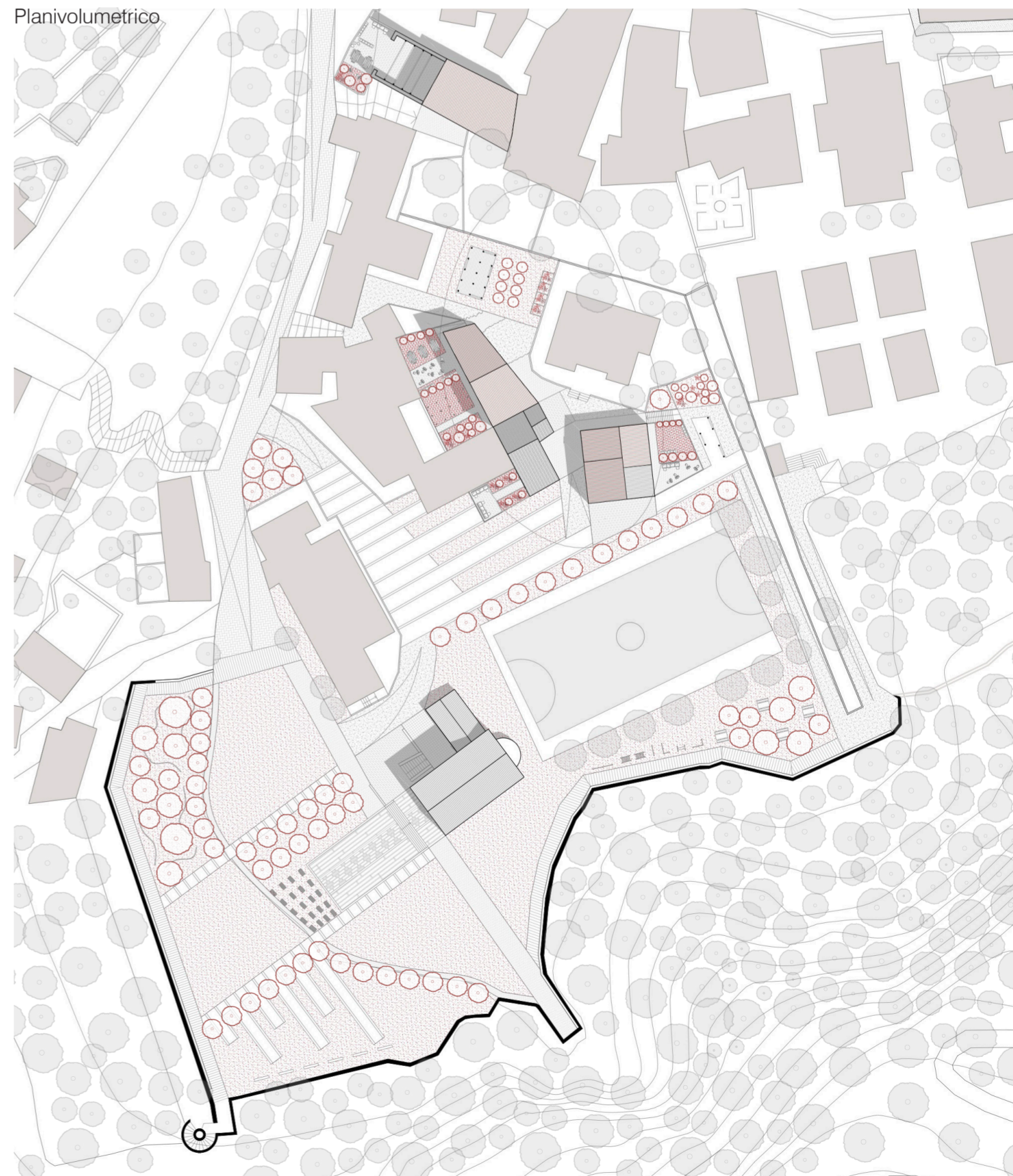
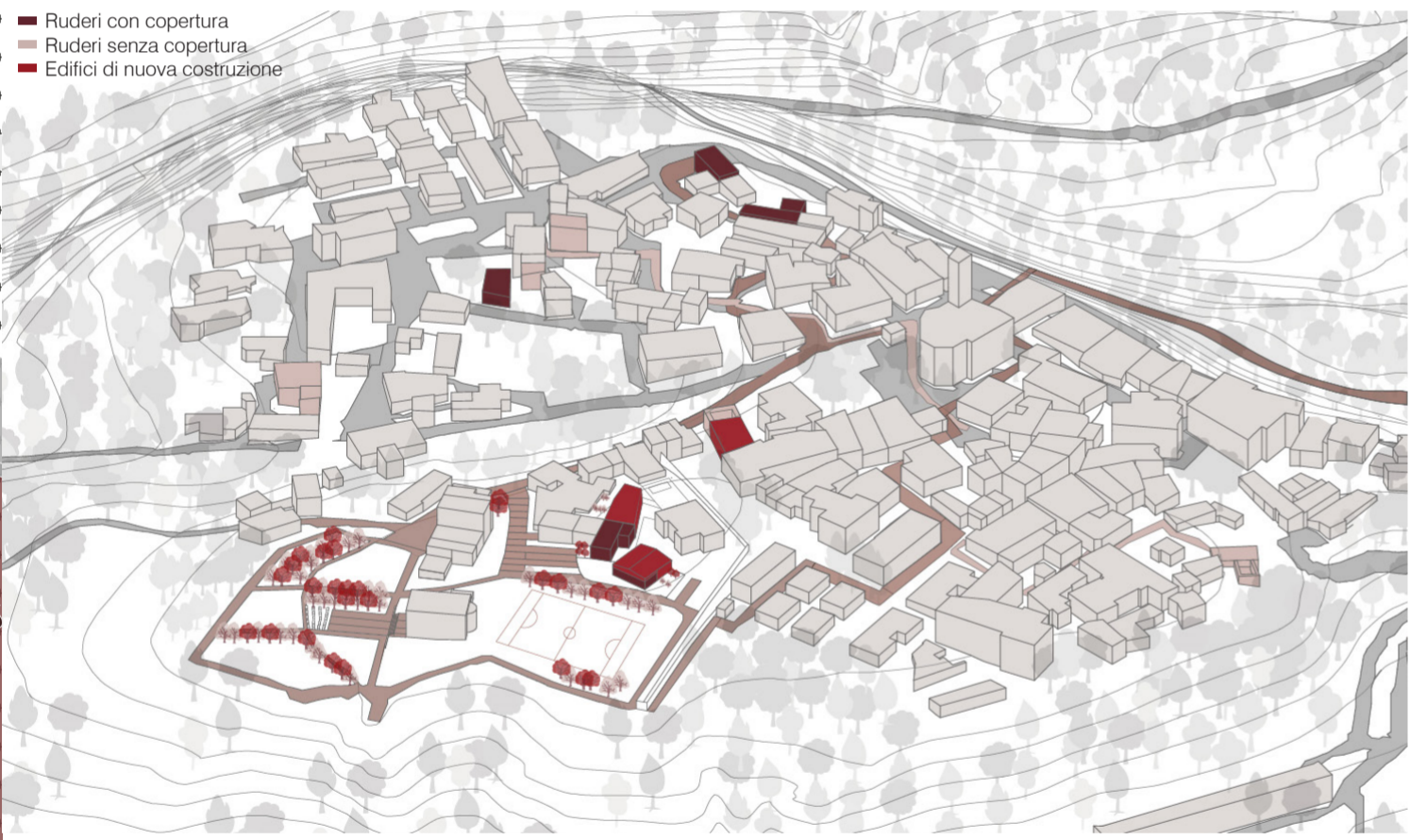
Rudere con copertura
Spazio espositivo



Rudere senza copertura
Spazio espositivo

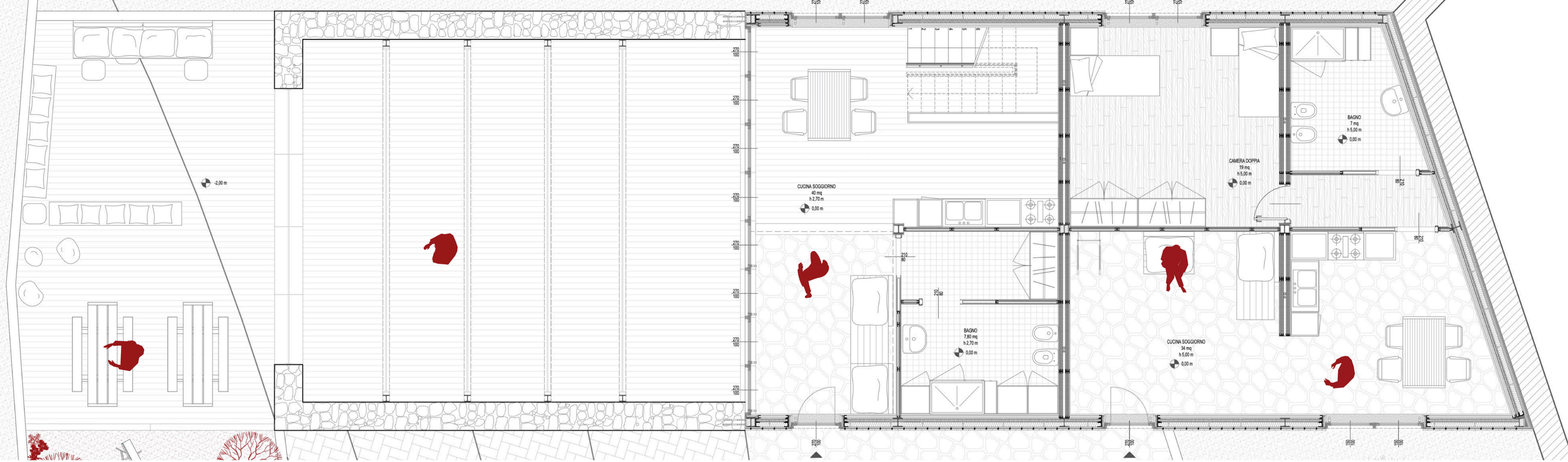


Rudere senza copertura
Deposito biciclette



IDENTITÀ S STRATEGIE PROGETTUALI PER L'AREA INTERNA VALLE ROVETO (AQ)

RUDERE A



Pianta piano terra | Scala 1:50

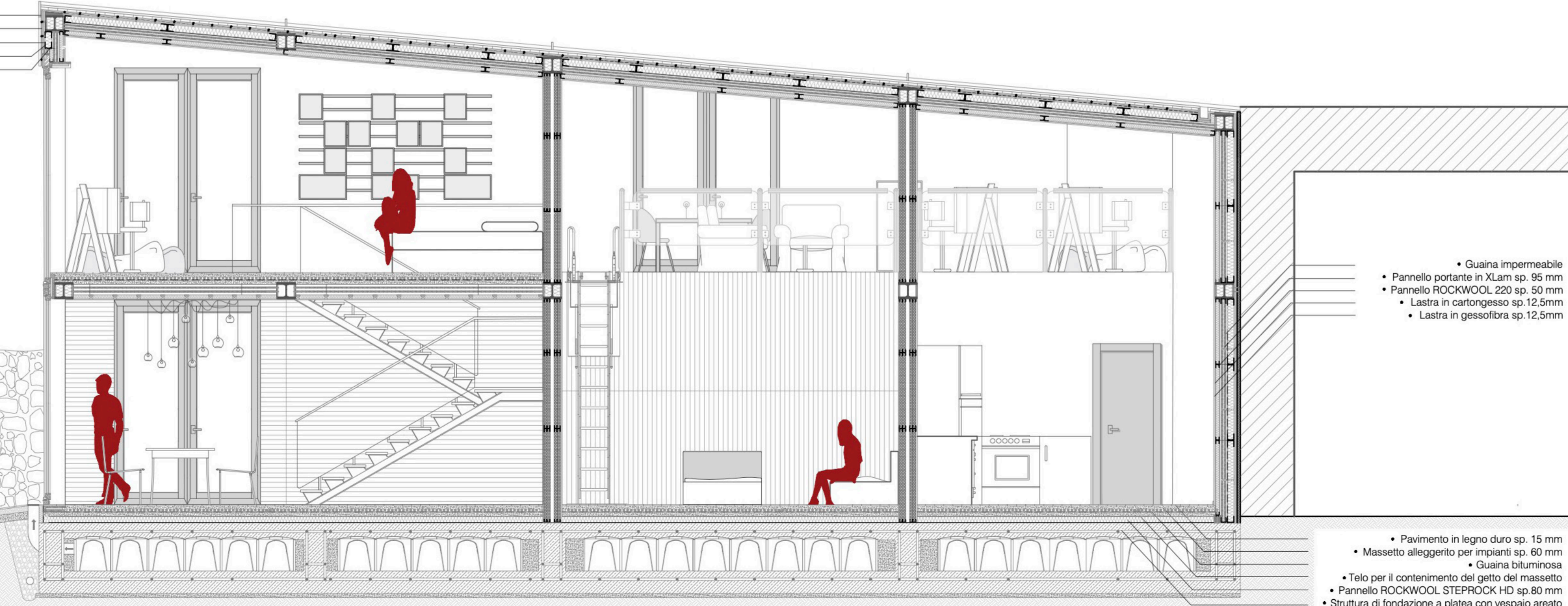


Pianta piano terra | Scala 1:200



Pianta piano primo | Scala 1:200

- Pannelli in legno di faggio sp. 30 mm
- Struttura metallica di sostegno
- Pannello ROCKWOOL 220 sp. 25 mm
- Tassello per ancoraggio meccanico del pannello isolante
- Pannello ROCKWOOL FRONTROCK MAX E sp.120 mm

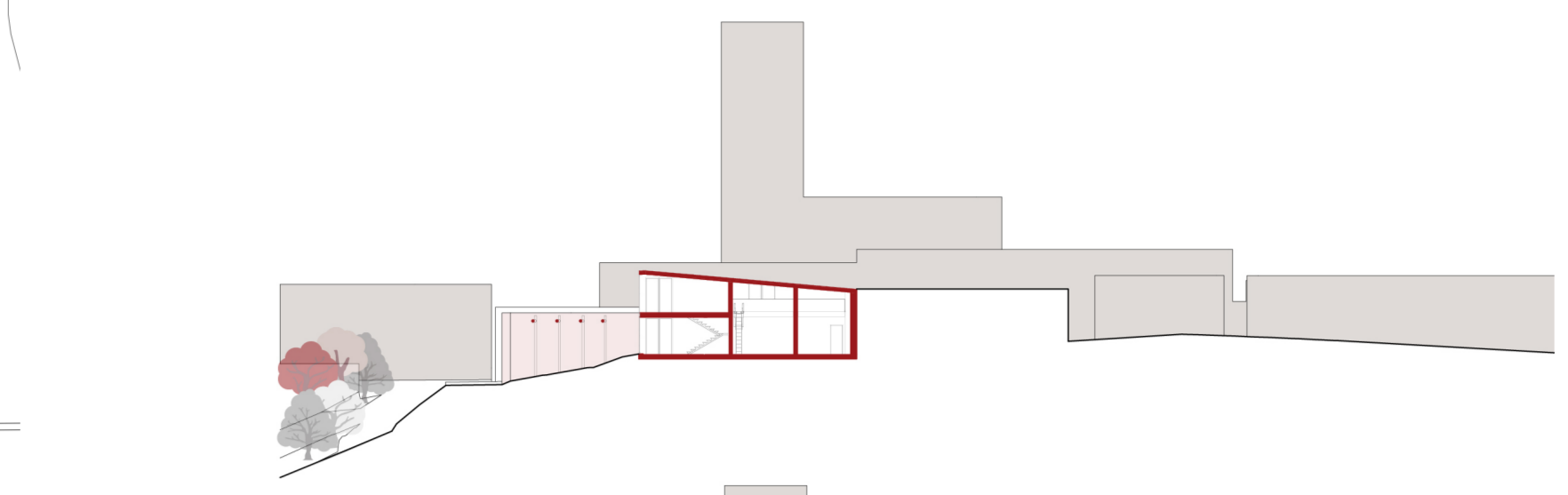


- Guaina impermeabile
- Pannello portante in XLam sp. 95 mm
- Pannello ROCKWOOL 220 sp. 50 mm
- Lastra in cartongesso sp.12,5mm
- Lastra in gessofibra sp.12,5mm

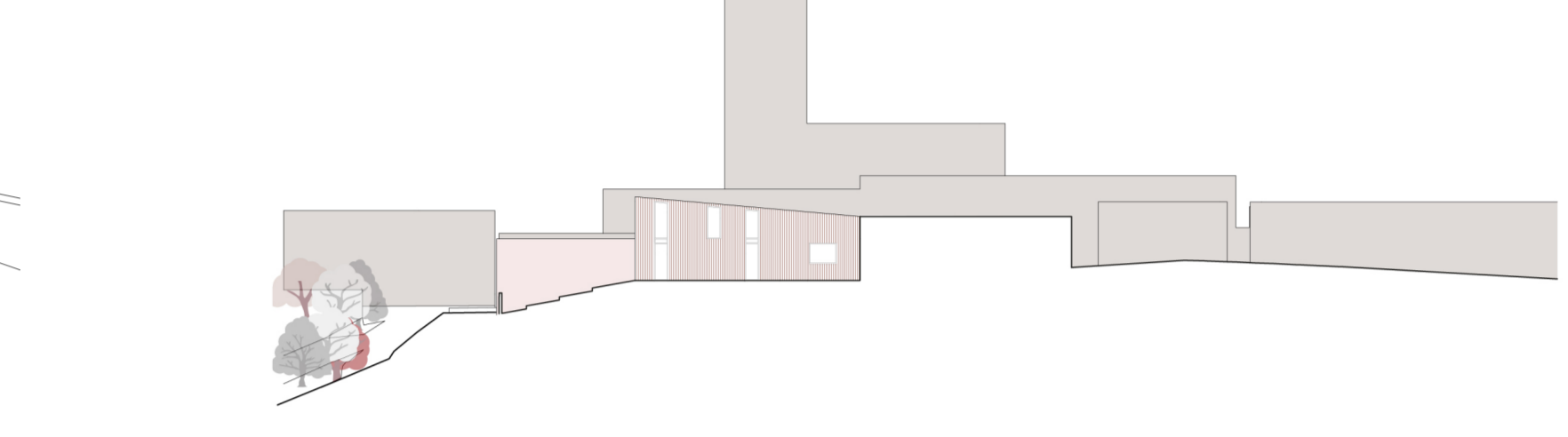
- Pavimento in legno duro sp. 15 mm
- Massetto alleggerito per impianti sp. 60 mm
- Guaina bituminosa
- Telo per il contenimento del getto del massetto
- Pannello ROCKWOOL STEPROCK HD sp.80 mm
- Struttura di fondazione a platea con vespaio areato

Sezione A-A' | Scala 1:50

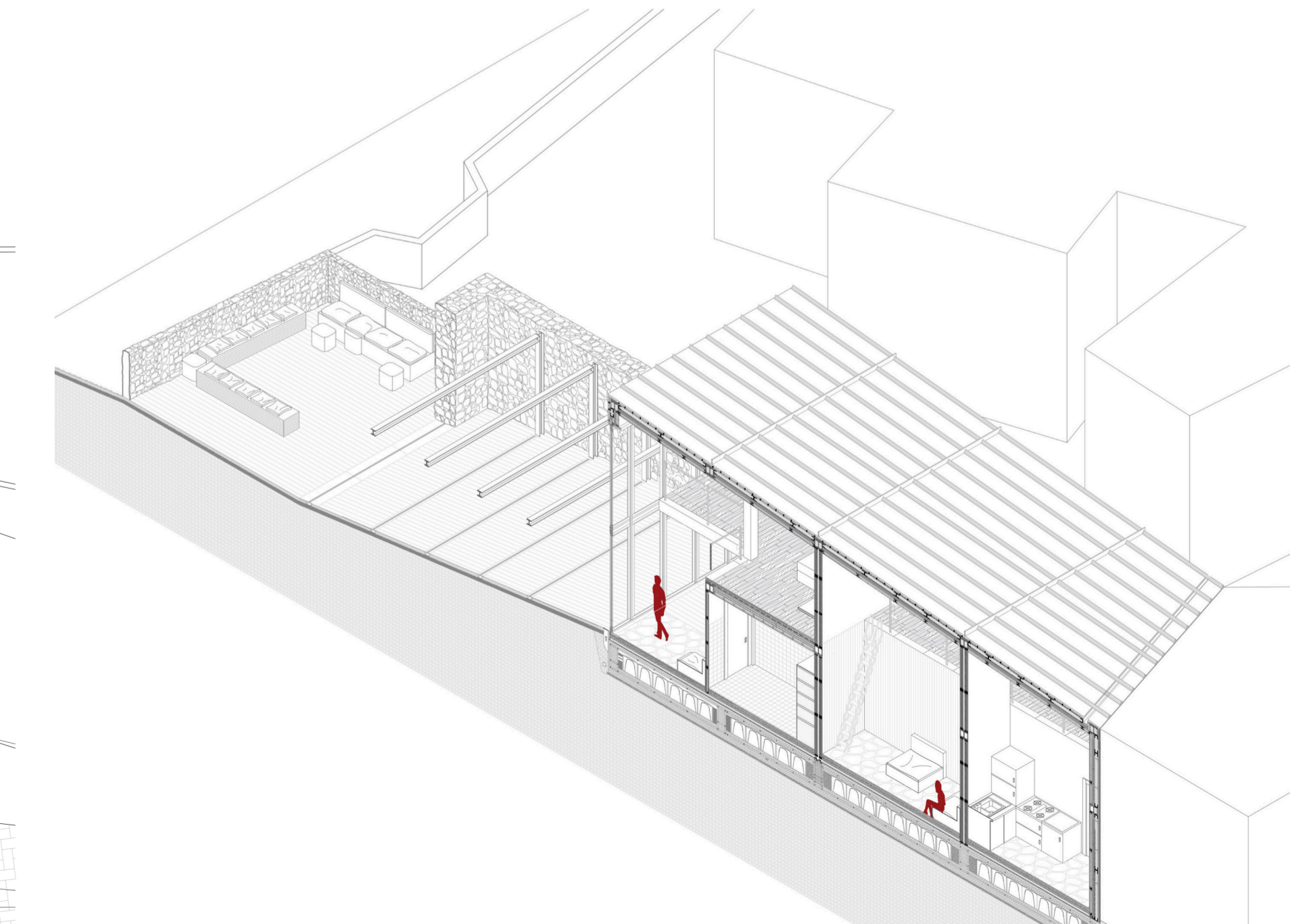
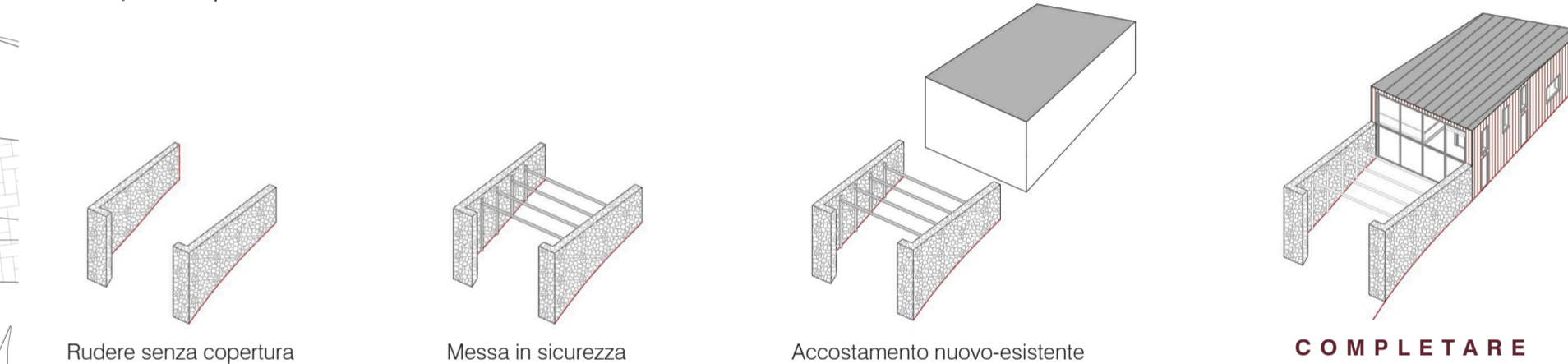
Pianta piano primo | Scala 1:200



Sezione A-A' | Scala 1:500



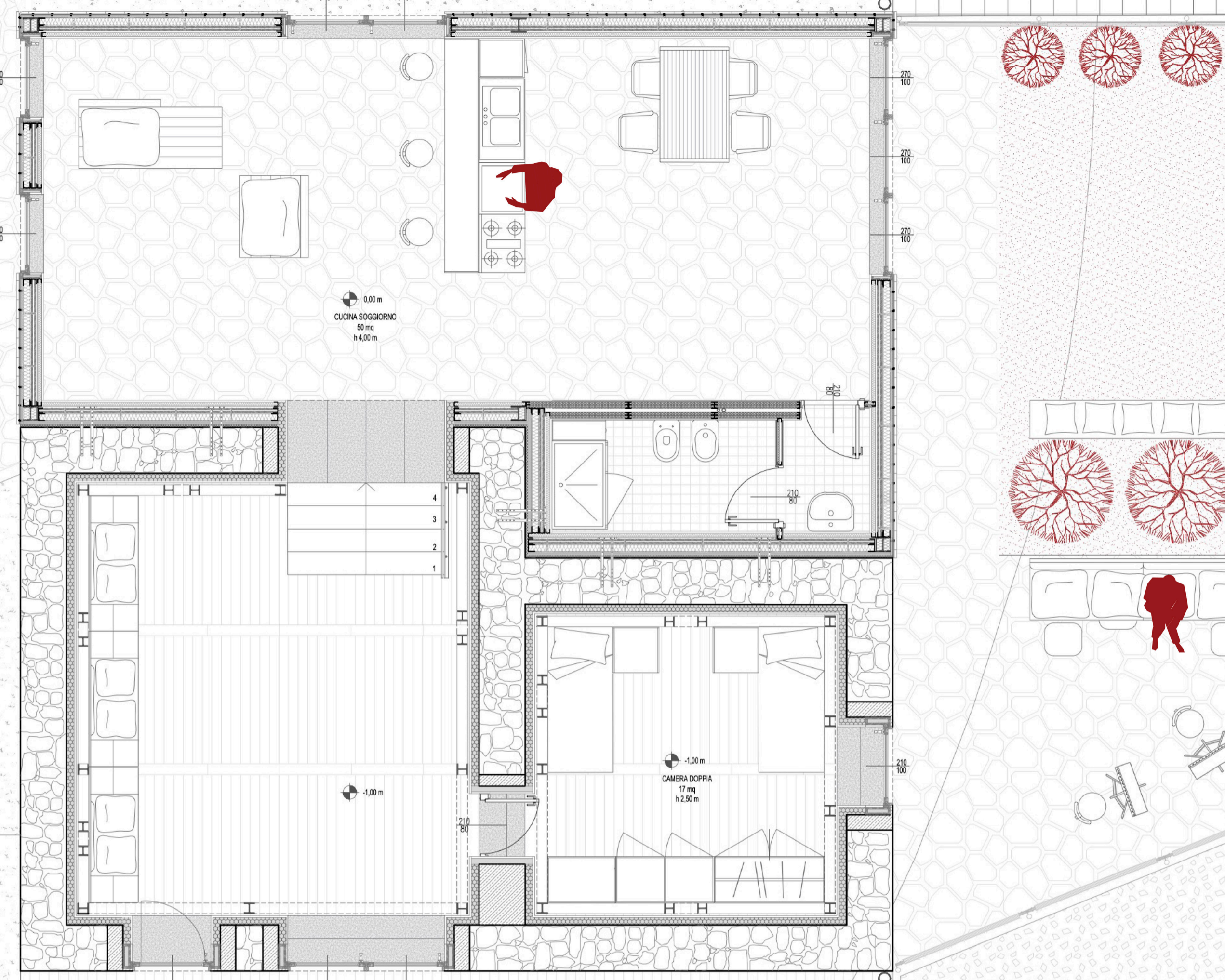
Prospetto 1 | Scala 1:500



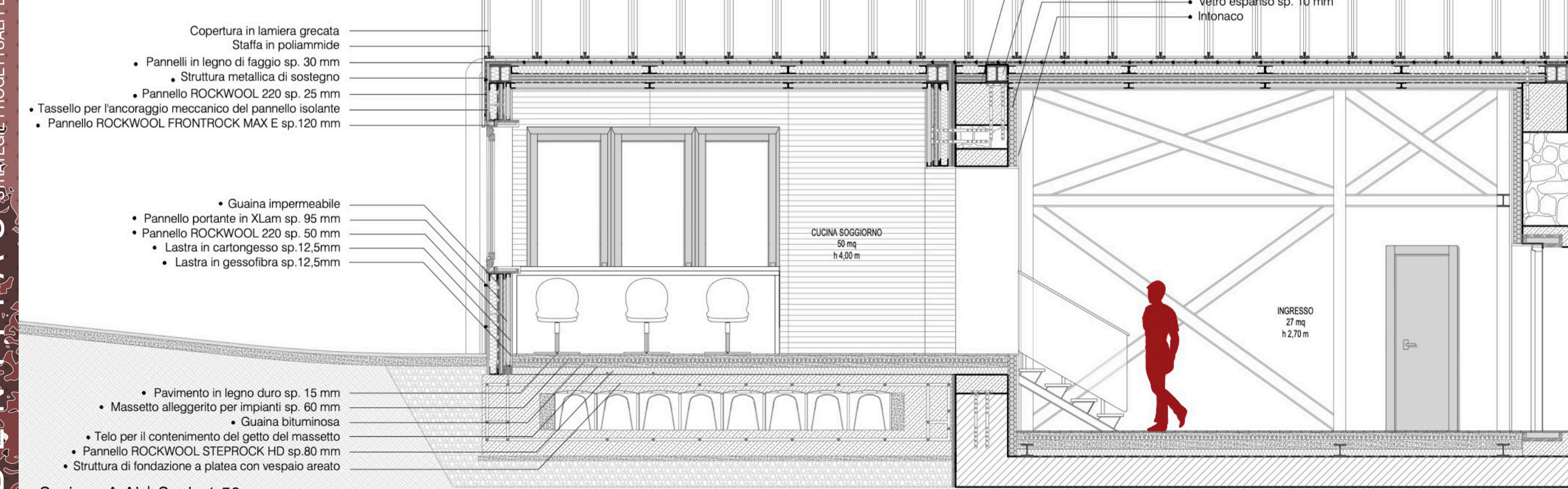
Spaccato assonometrico | Scala 1:100

RUDERE C

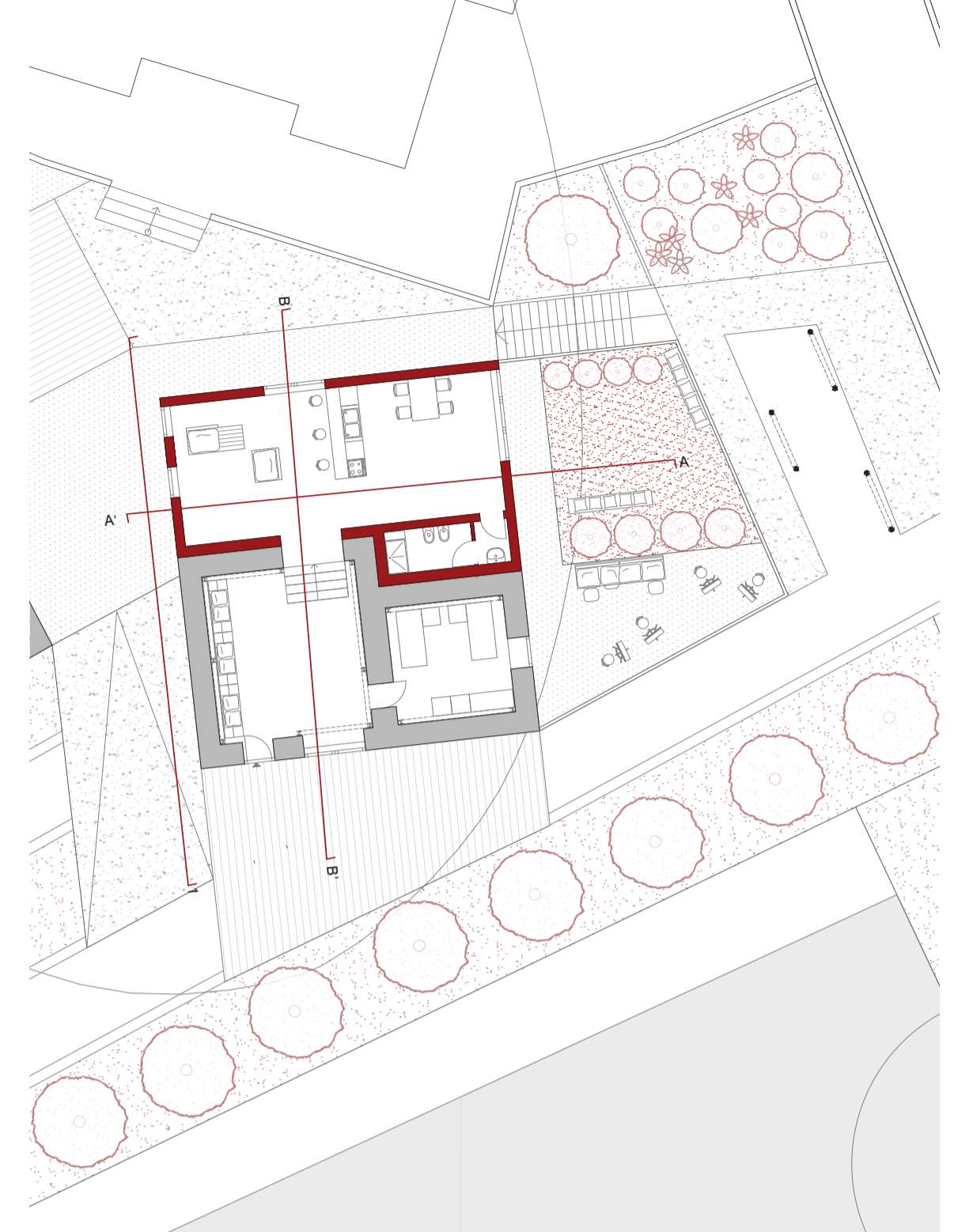
Laureandi: Francesco Avròldi, Federica Savio, Valentina



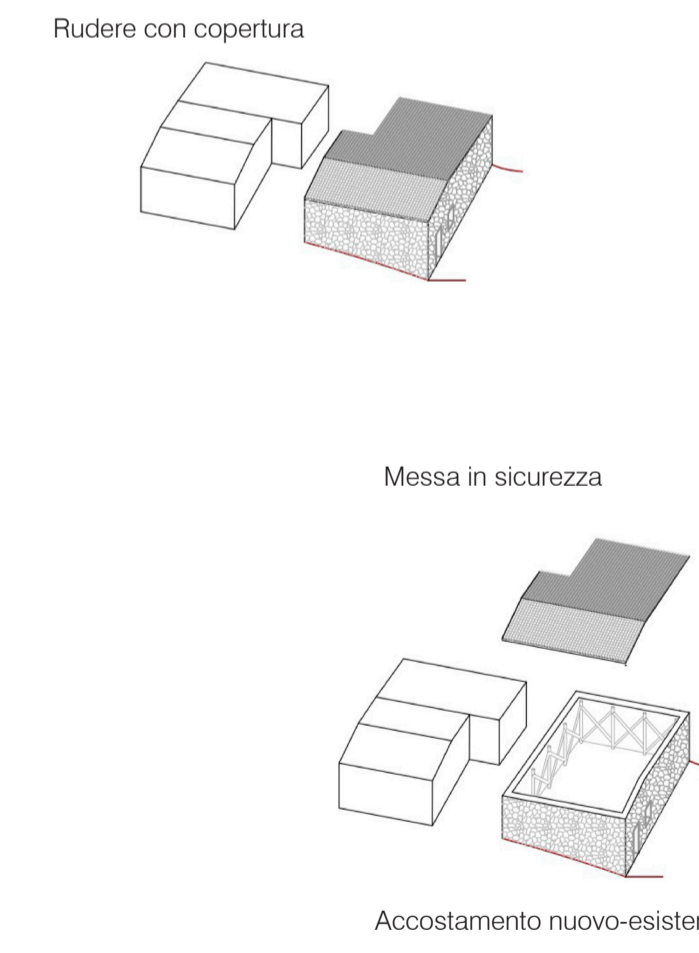
Pianta piano terra | Scala 1:50



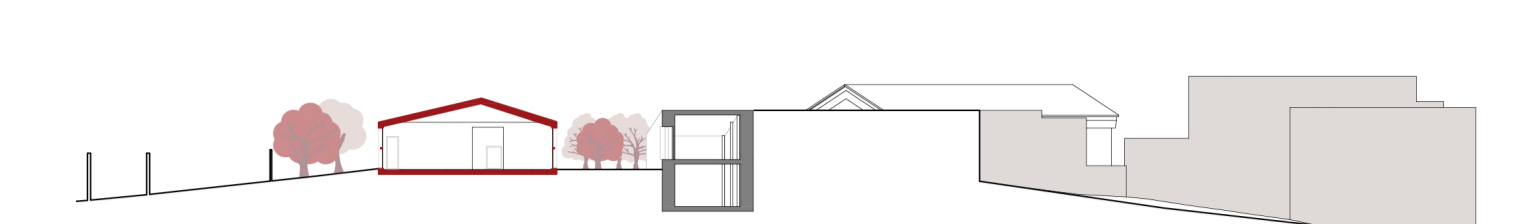
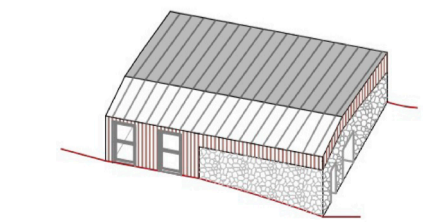
Sezione A-A' | Scala 1:50



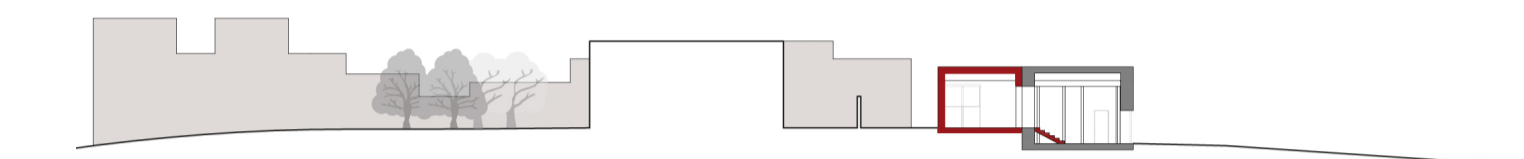
Pianta piano terra | Scala 1:200



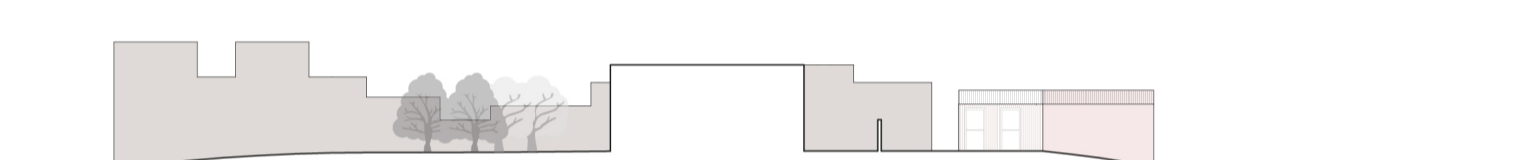
INGLOBARE



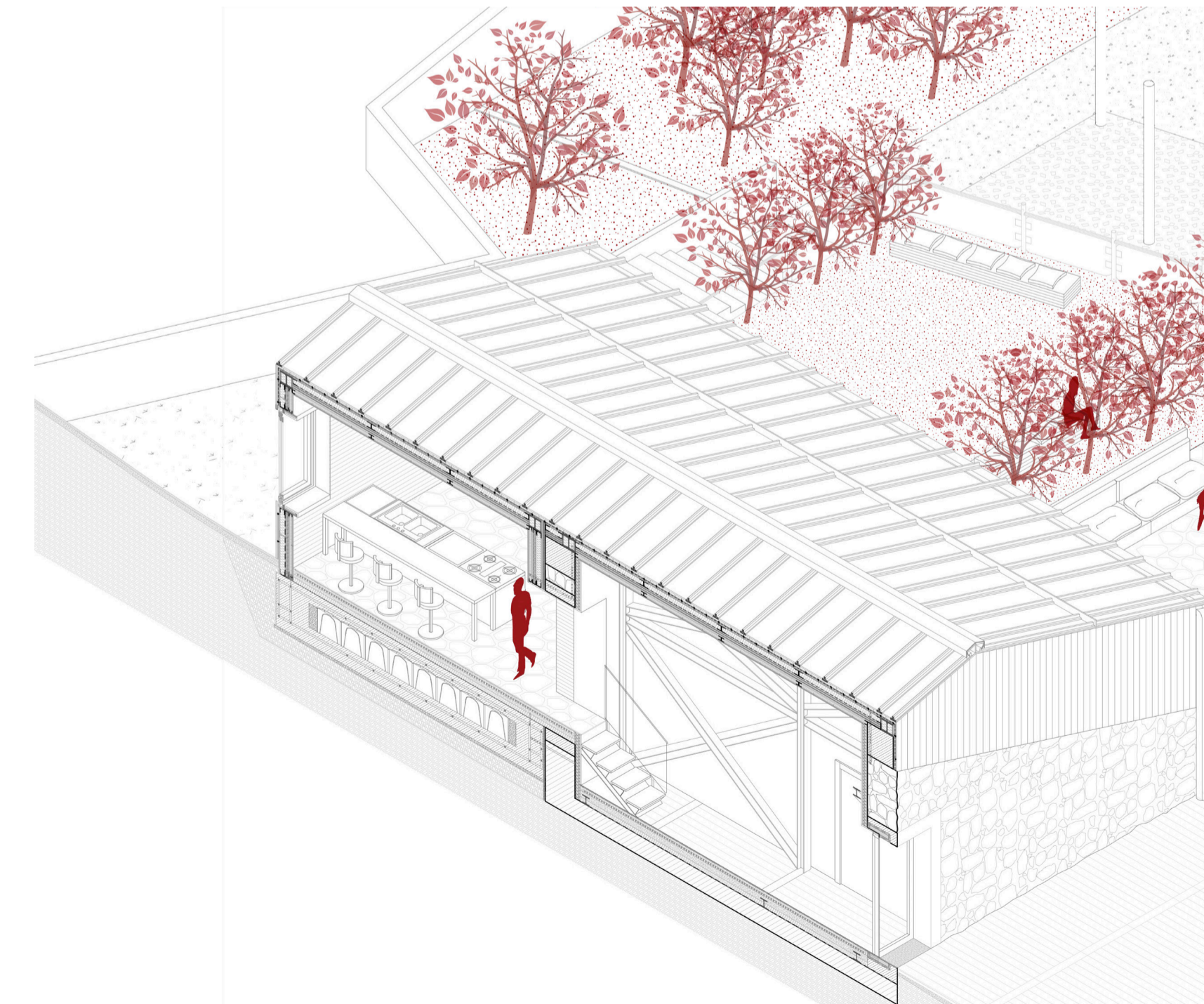
Sezione A-A' | Scala 1:500



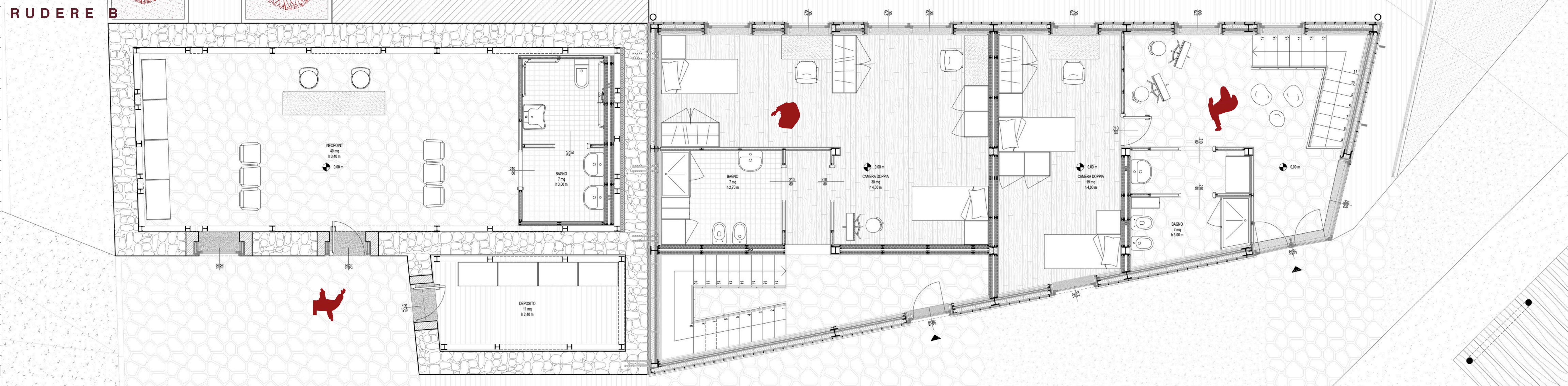
Prospecto 1 | Scala 1:500



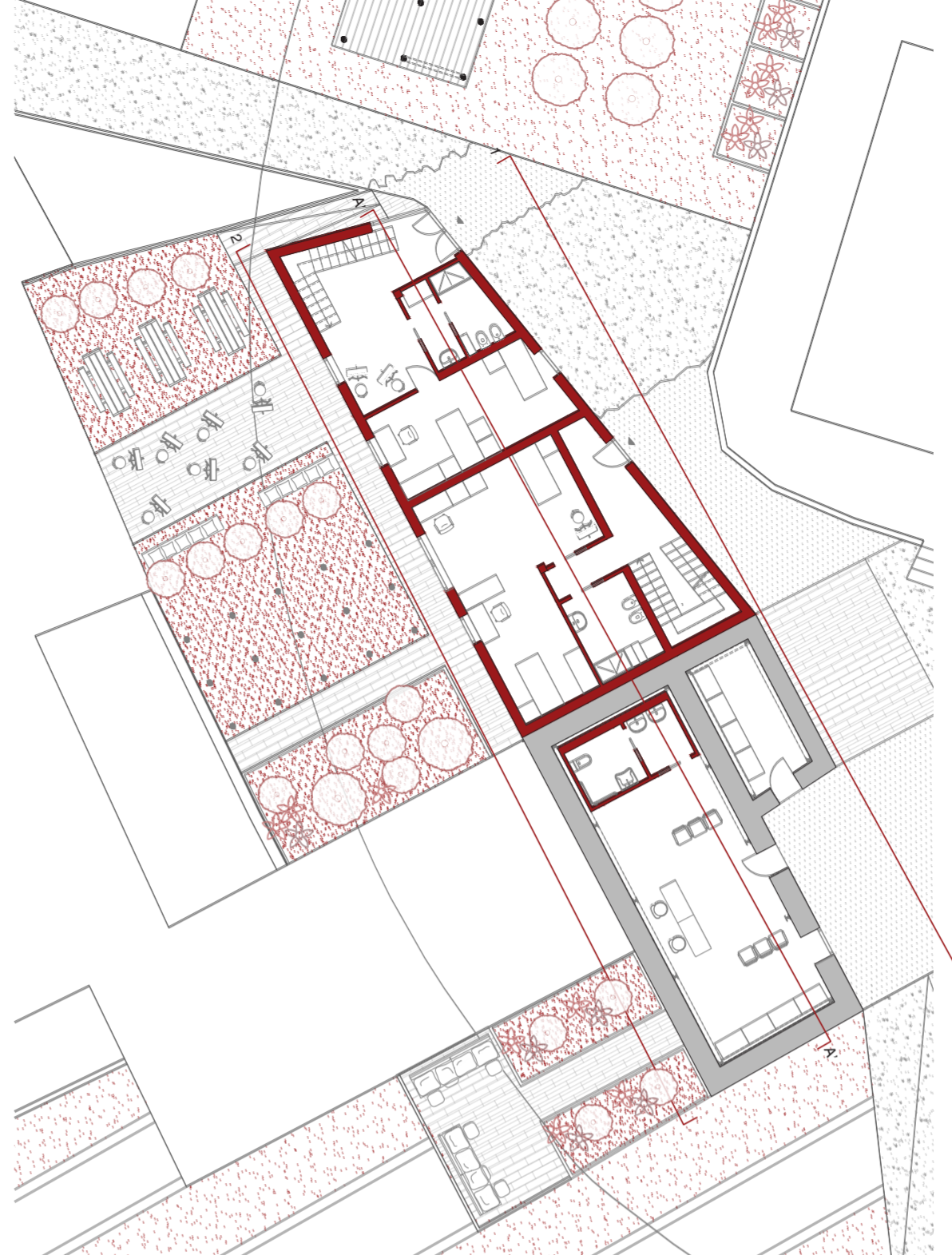
Prospecto 2 | Scala 1:500



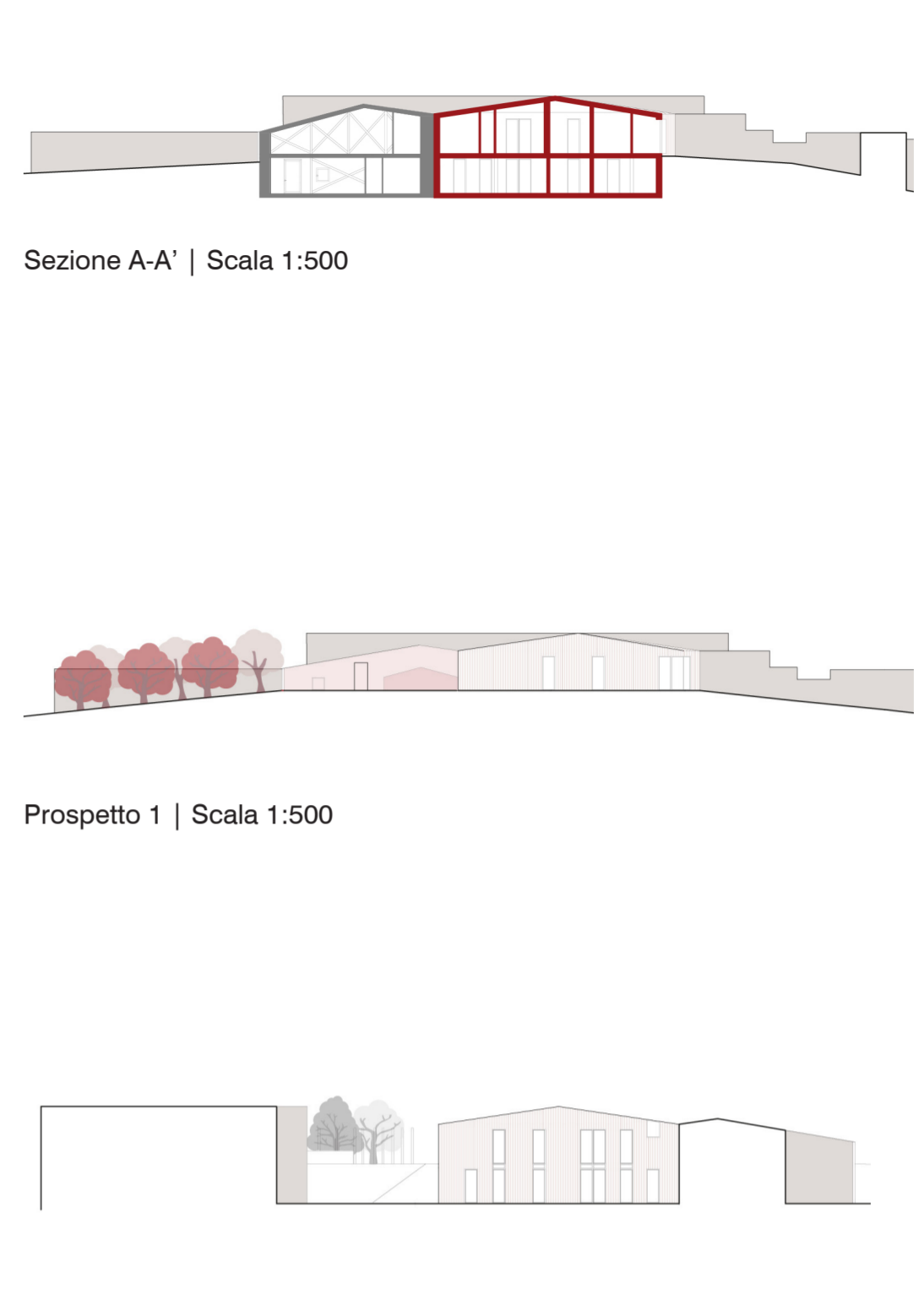
IDENTITÀ STRATEGIE PROGETTUALI PER L'AREA INTERNA VALLE ROVETO (AO)



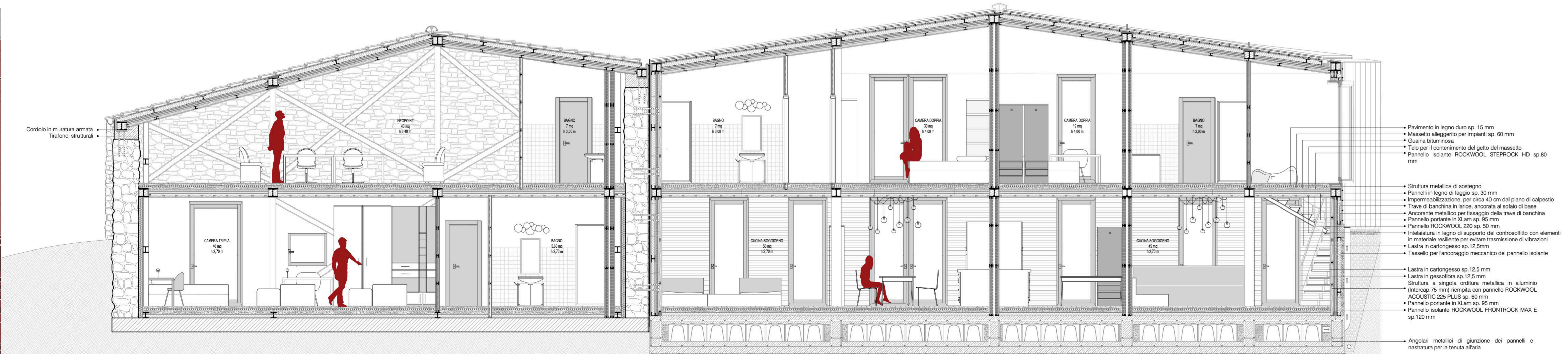
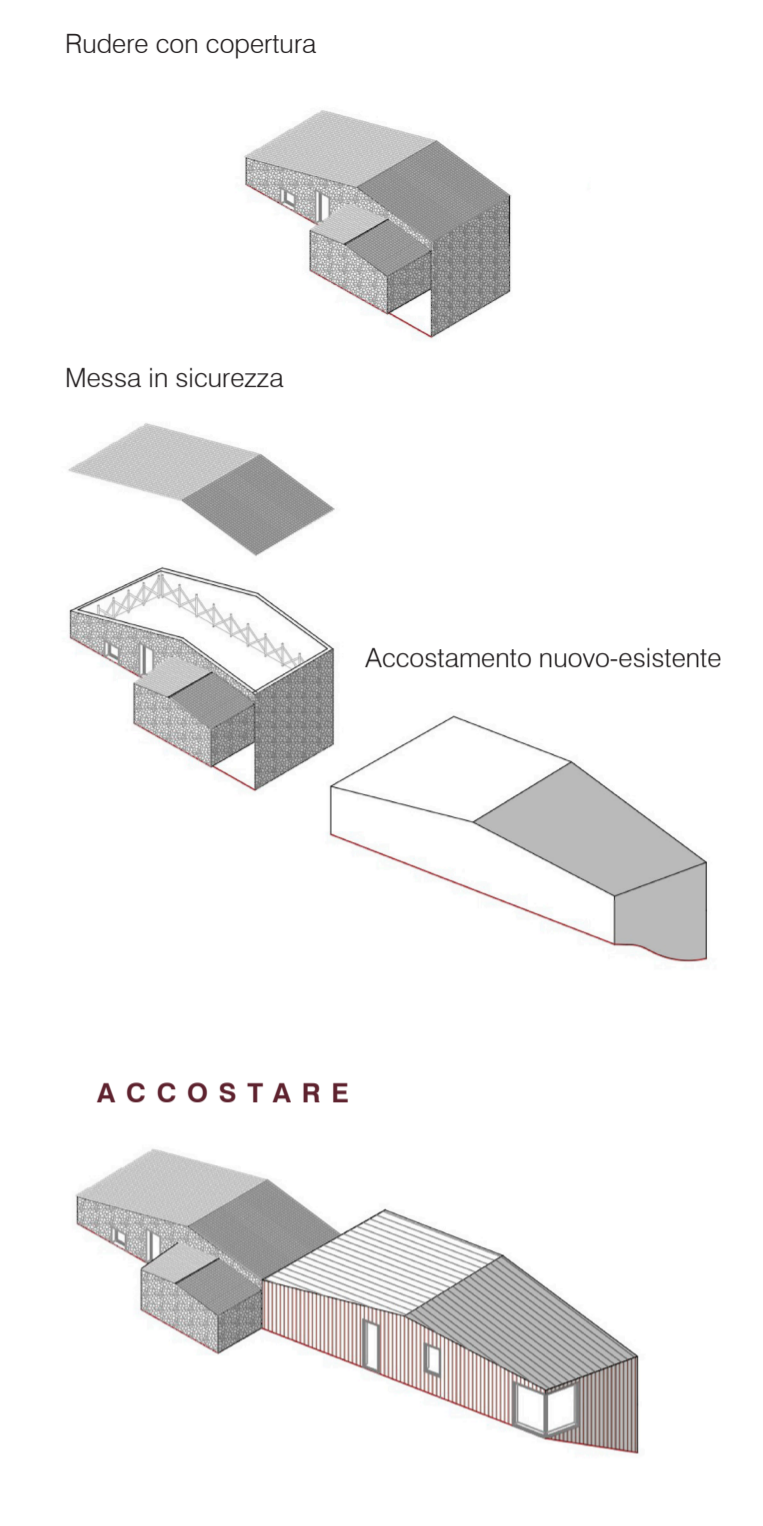
Pianta piano terra | Scala 1:50



Pianta piano terra | Scala 1:200

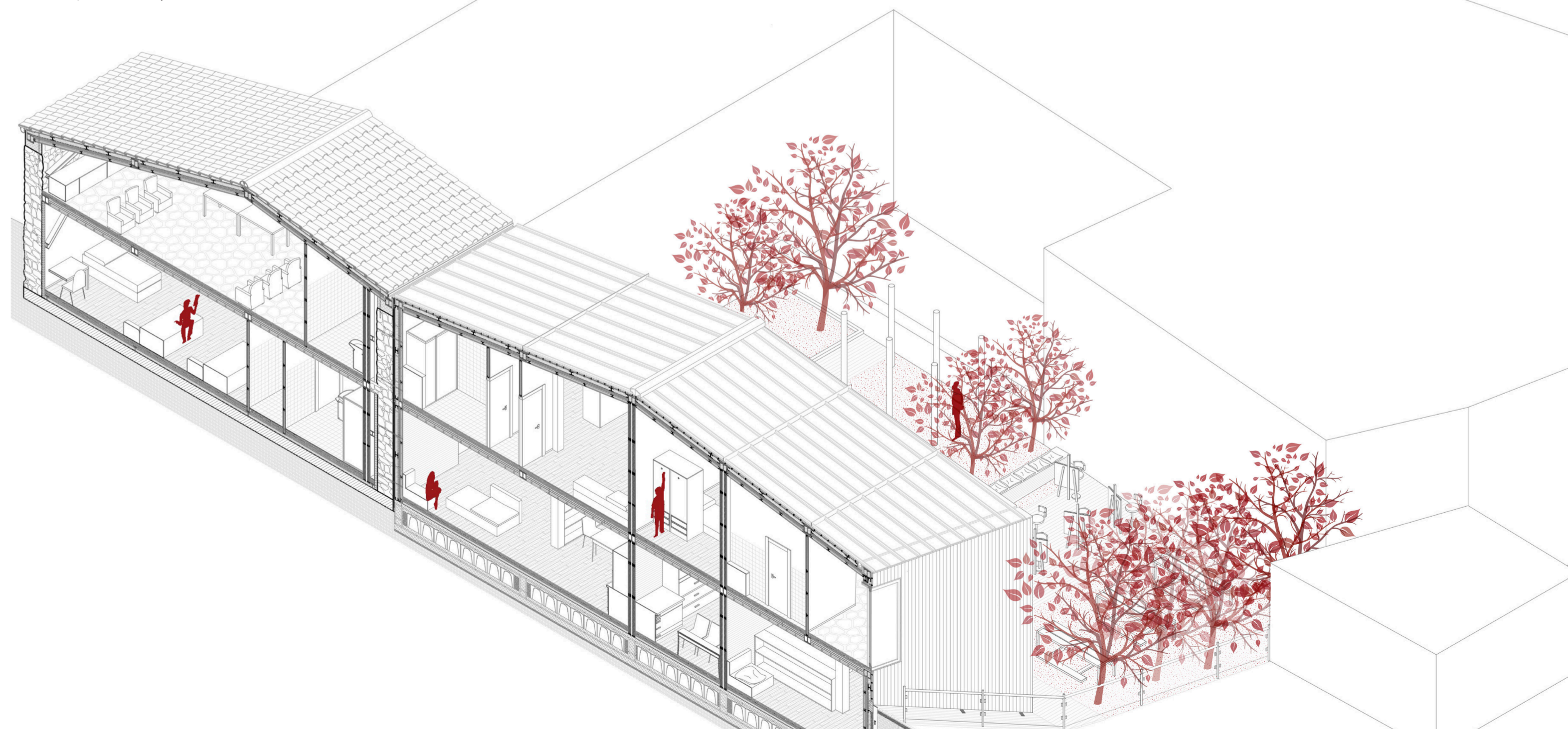


Prospetto 2 | Scala 1:500



Sezione A-A' | Scala 1:50

- Pavimento in legno duro sp. 15 mm
- Massetto alleggerito per impianti sp. 60 mm
- Guaina bituminosa
- Telo per il contenimento del getto del massetto
- Pannello isolante ROCKWOOL STEPROCK HD sp.80 mm
- Struttura metallica di sostegno
- Pannelli in legno di faggio sp. 30 mm
- Impermeabilizzazione, per circa 40 cm dal piano di calpestio
- Trave di banchina in larice, ancorata al solaio di base
- Ancorante metallico per fissaggio della trave di banchina
- Pannello portante in XLam sp. 95 mm
- Pannello ROCKWOOL 220 sp. 50 mm
- Intelaiatura in legno di supporto del controsoffitto con elementi in materiale resiliente per evitare trasmissione di vibrazioni
- Lastra in cartongesso sp. 12,5mm
- Tassello per l'ancoraggio meccanico del pannello isolante
- Lastra in cartongesso sp. 12,5 mm
- Lastra in gessofibra sp. 12,5 mm
- Struttura a singola orditura metallica in alluminio (Intercep 75 mm) riempita con pannello ROCKWOOL ACOUSTIC 225 PLUS sp. 60 mm
- Pannello portante in XLam sp. 95 mm
- Pannello isolante ROCKWOOL FRONTROCK MAX E sp.120 mm
- Angolari metallici di giunzione dei pannelli e nastratura per la tenuta all'aria



Spaccato assonometrico | Scala 1:100