

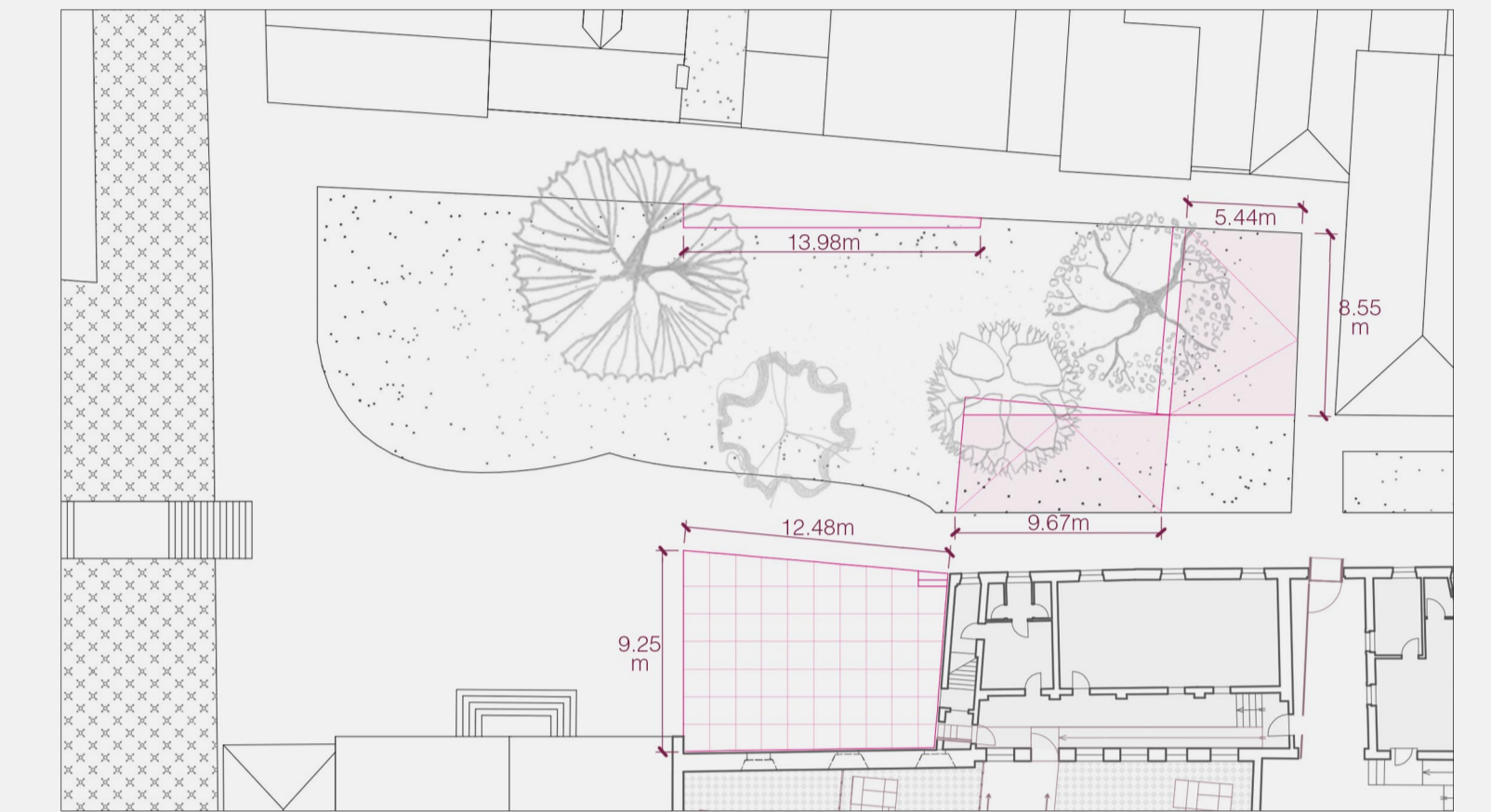
RED FRAGMENTS: A new dialogue between interiors and exteriors of Santi Cosma and Damiano former convent

Artist-in-residence at Bevilacqua La Masa Foundation in Giudecca island, Venice

A Vivid Event Site: Campo S.Cosmo



Masterplan of Campo S.Cosmo with dimensions



Construction detail of one unit of the aluminium alloy stage

