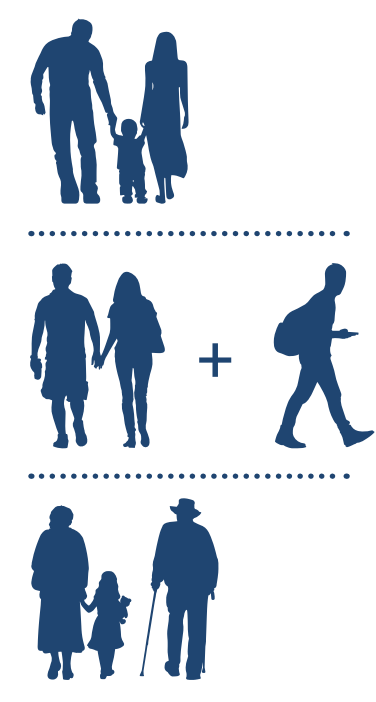
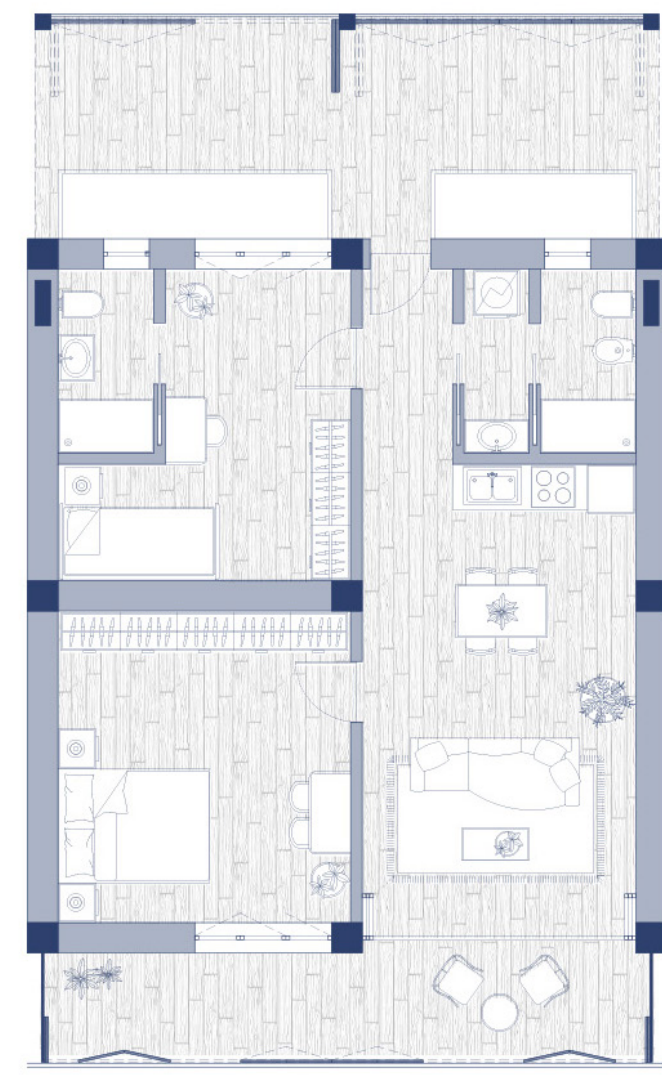


**T4 - TRILO**  
80m<sup>2</sup>



- Tipologia abitativa per famiglia/coppia + studente/nonni + nipote
- Doppi servizi



**T5 - QUADRI**  
100m<sup>2</sup>



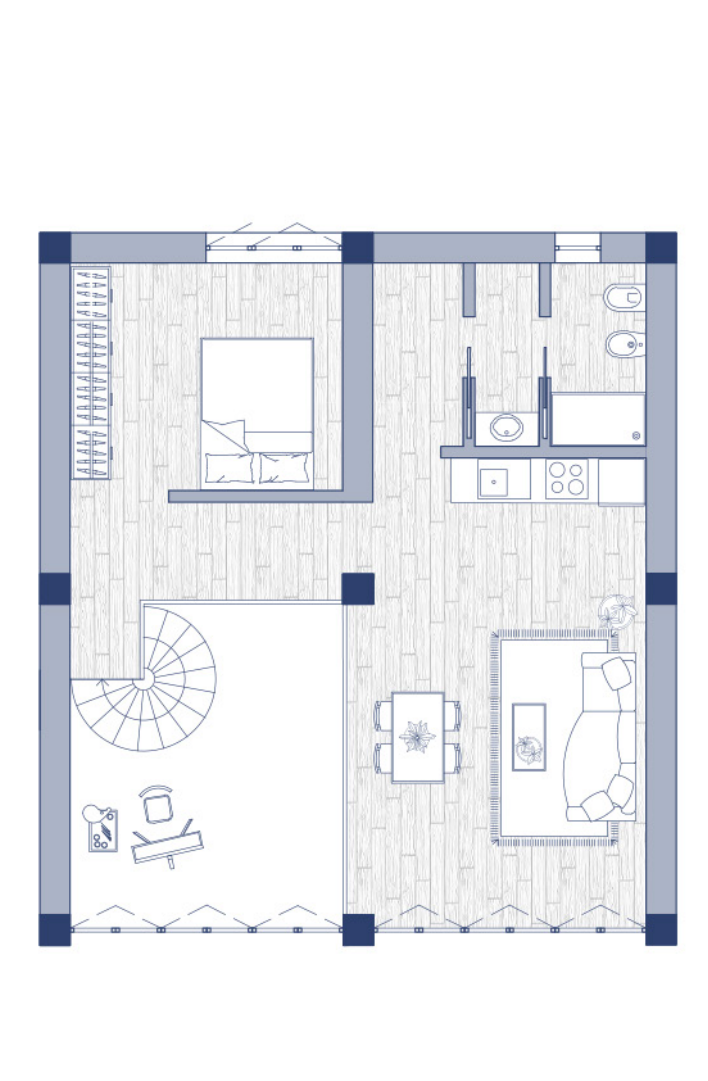
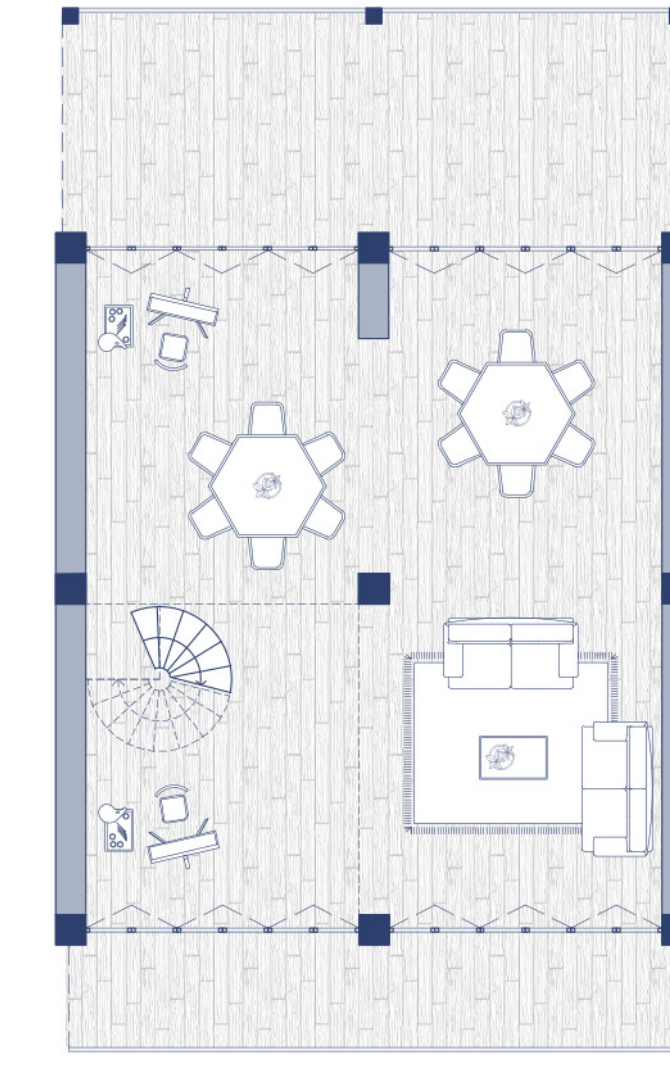
- Tipologia abitativa per famiglia/+anziano/+ studente
- Doppi servizi



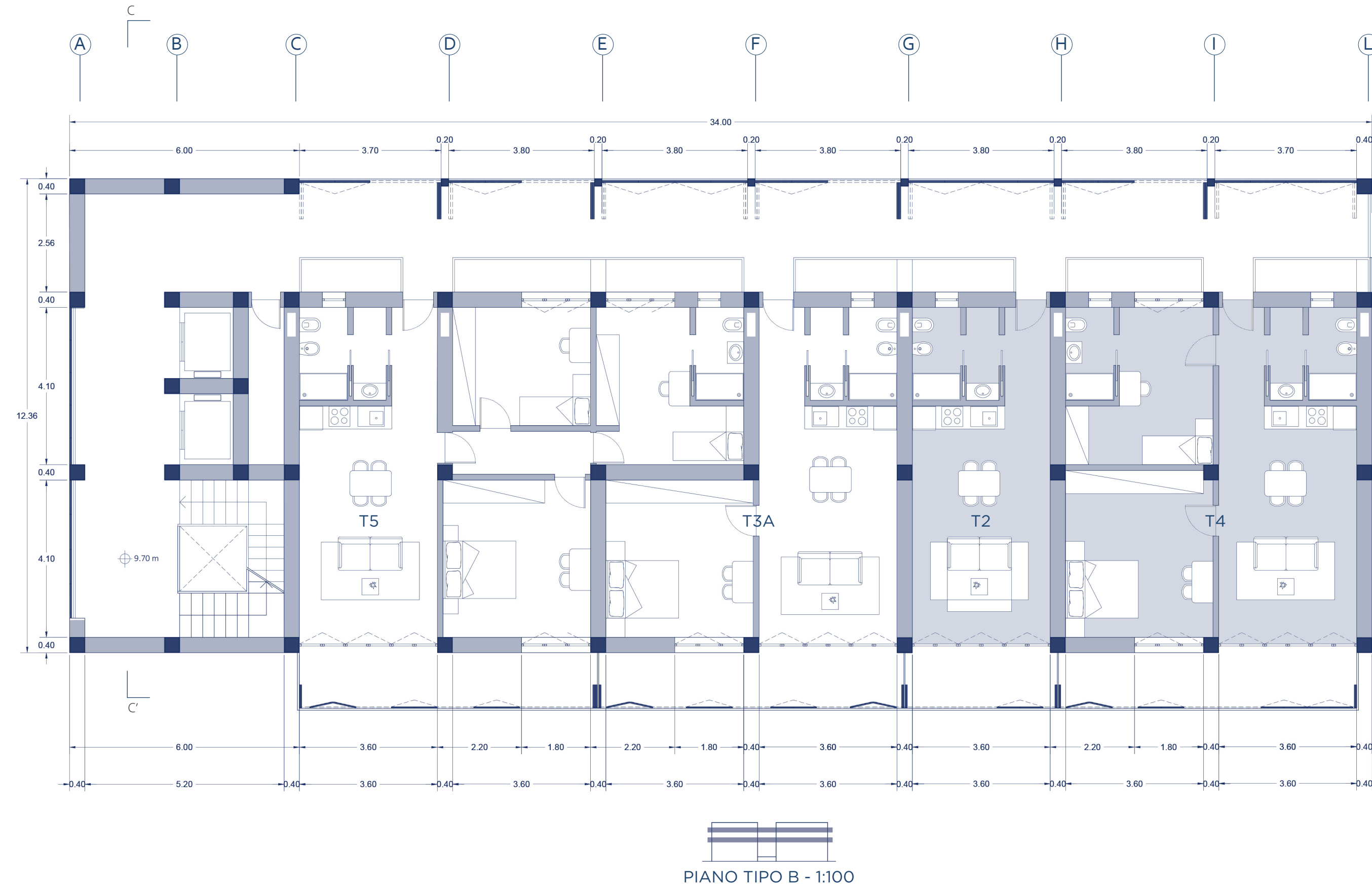
**T6 - CASE BOTTEGA**  
10m<sup>2</sup>



- Tipologia abitativa per artista: coppia/singolo
- PT: Bottega  
PI: Alloggio privato



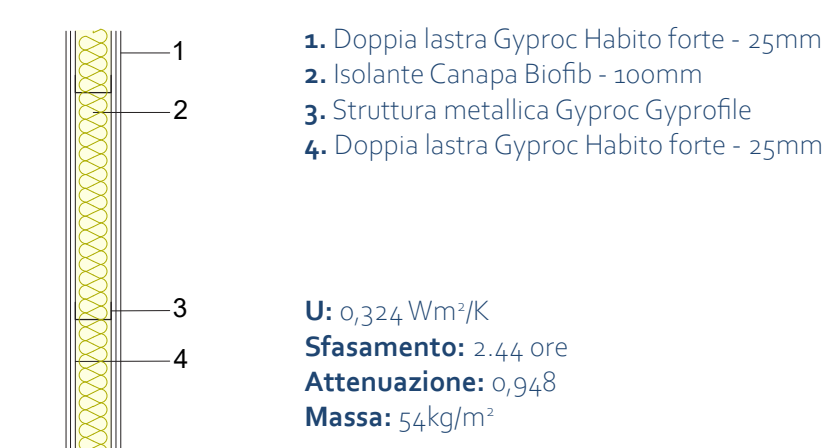
**FLESSIBILITA' PER LAYER**



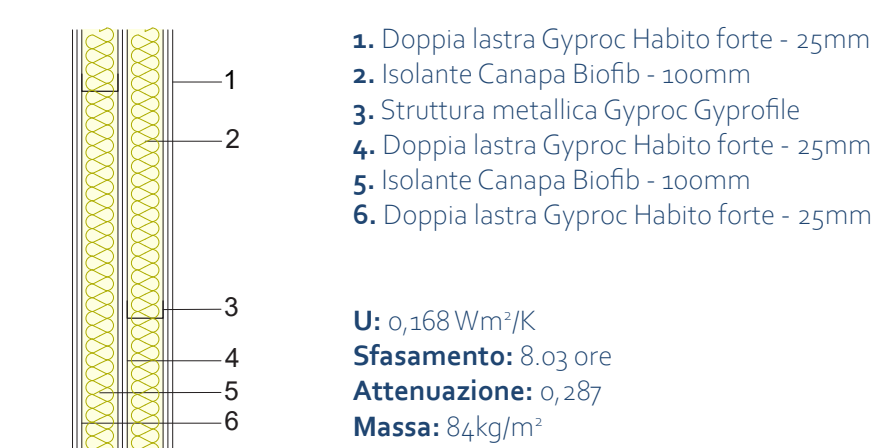
PIANO TIPO B - 1:100

**STRATIGRAFIE - 1:20**

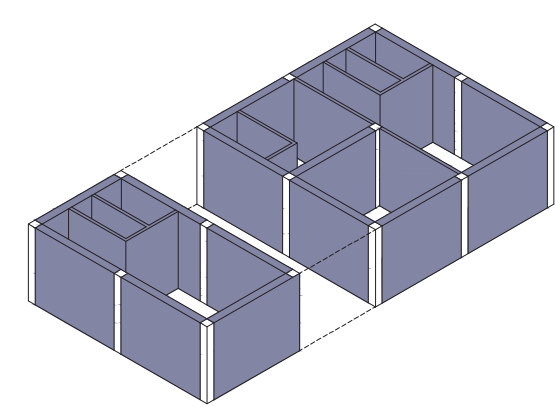
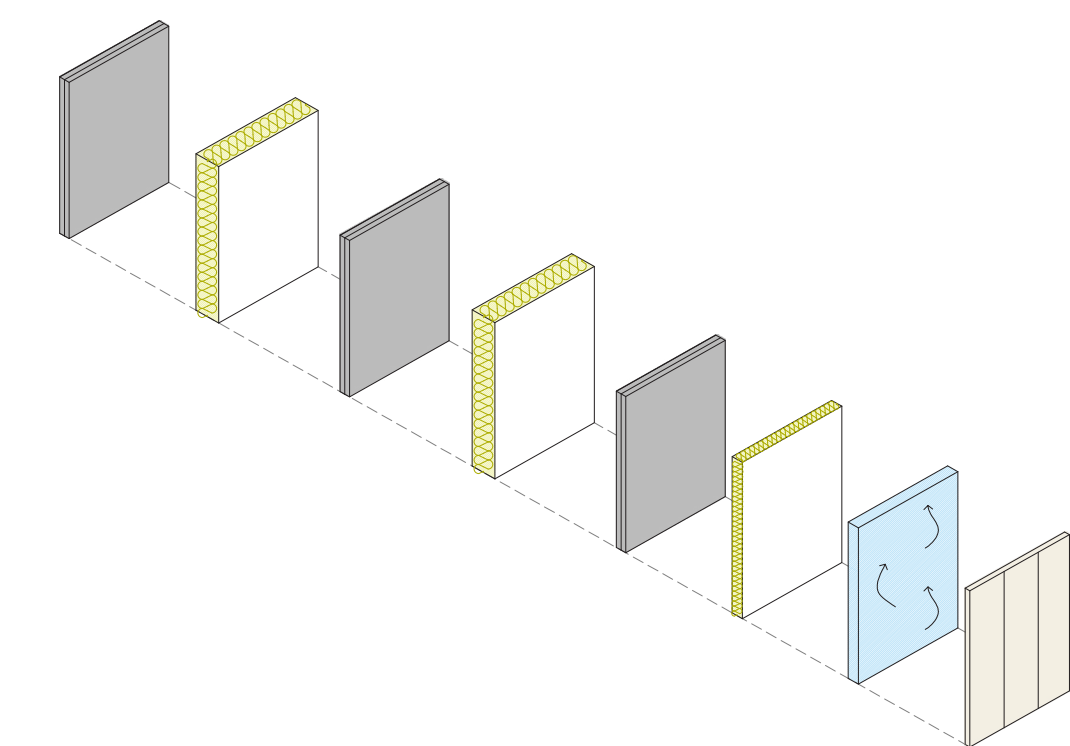
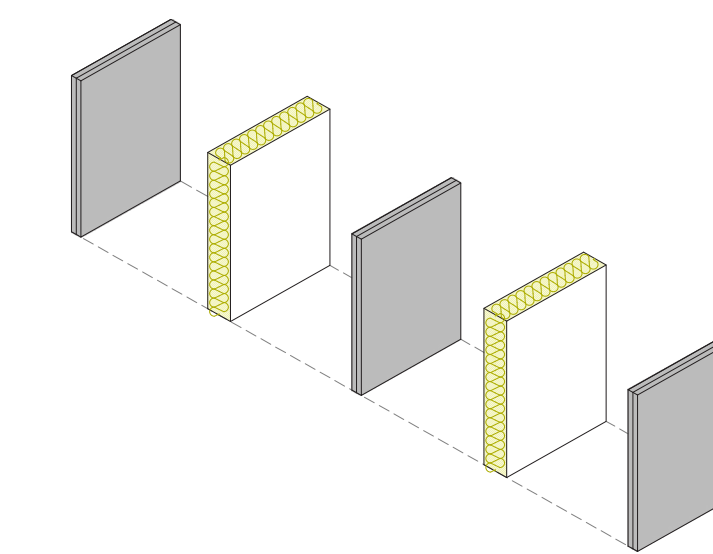
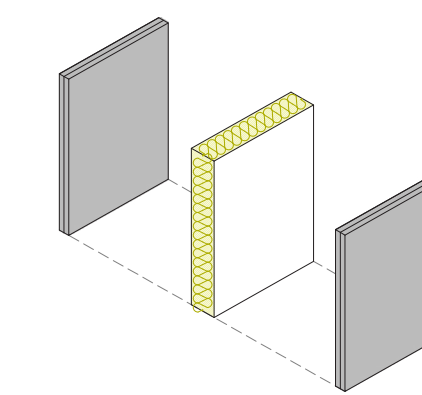
**STRATIGRAFIA M1 (BLU)**  
Stratigrafia base per ambienti nel medesimo alloggio



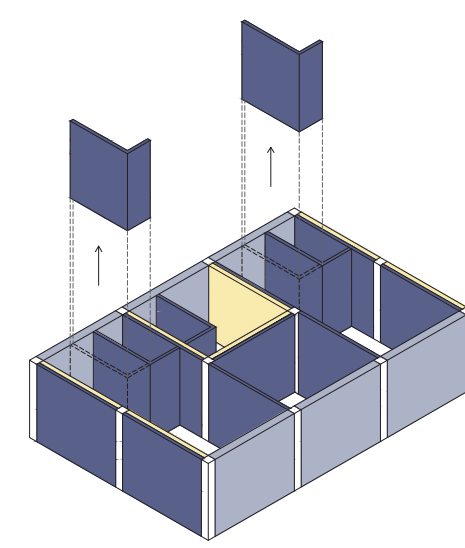
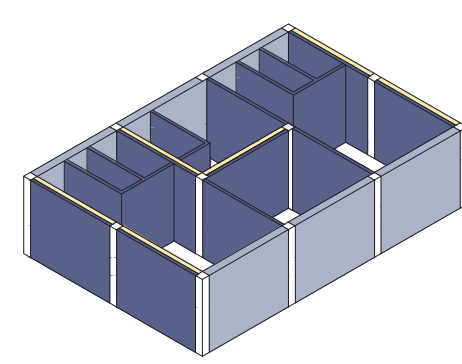
**STRATIGRAFIA M2 (GIALLA)**  
Stratigrafia per separare gli alloggi



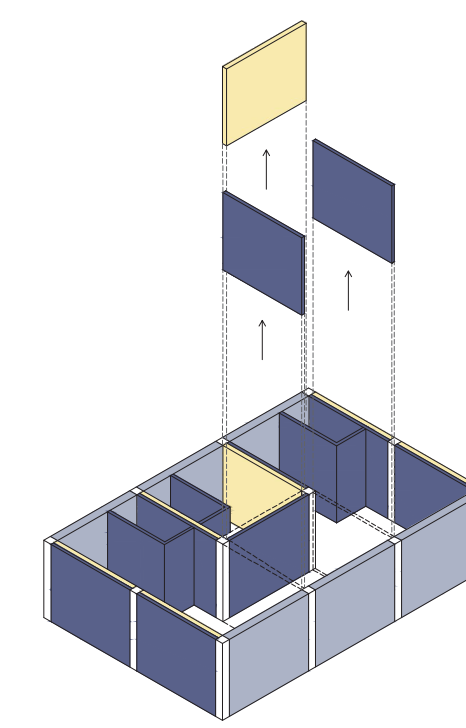
**STRATIGRAFIA M3 (AZZURRA)**  
Stratigrafia di chiusura esterna



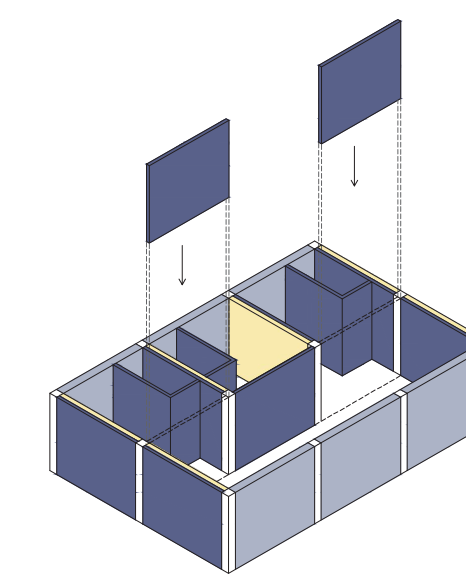
COMPOSIZIONE RESIDENZIALE  
Tipologie residenziali private T2 e T4



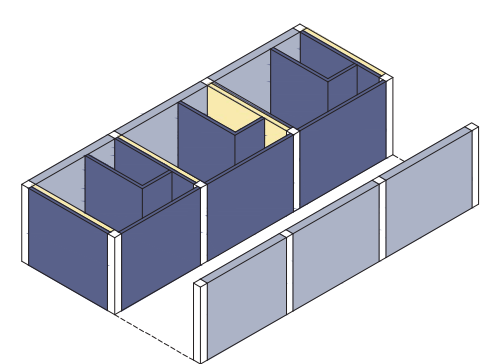
RIMOZIONE MODULO BAGNO  
Sottrazione layer modulo aggiuntivo bagno



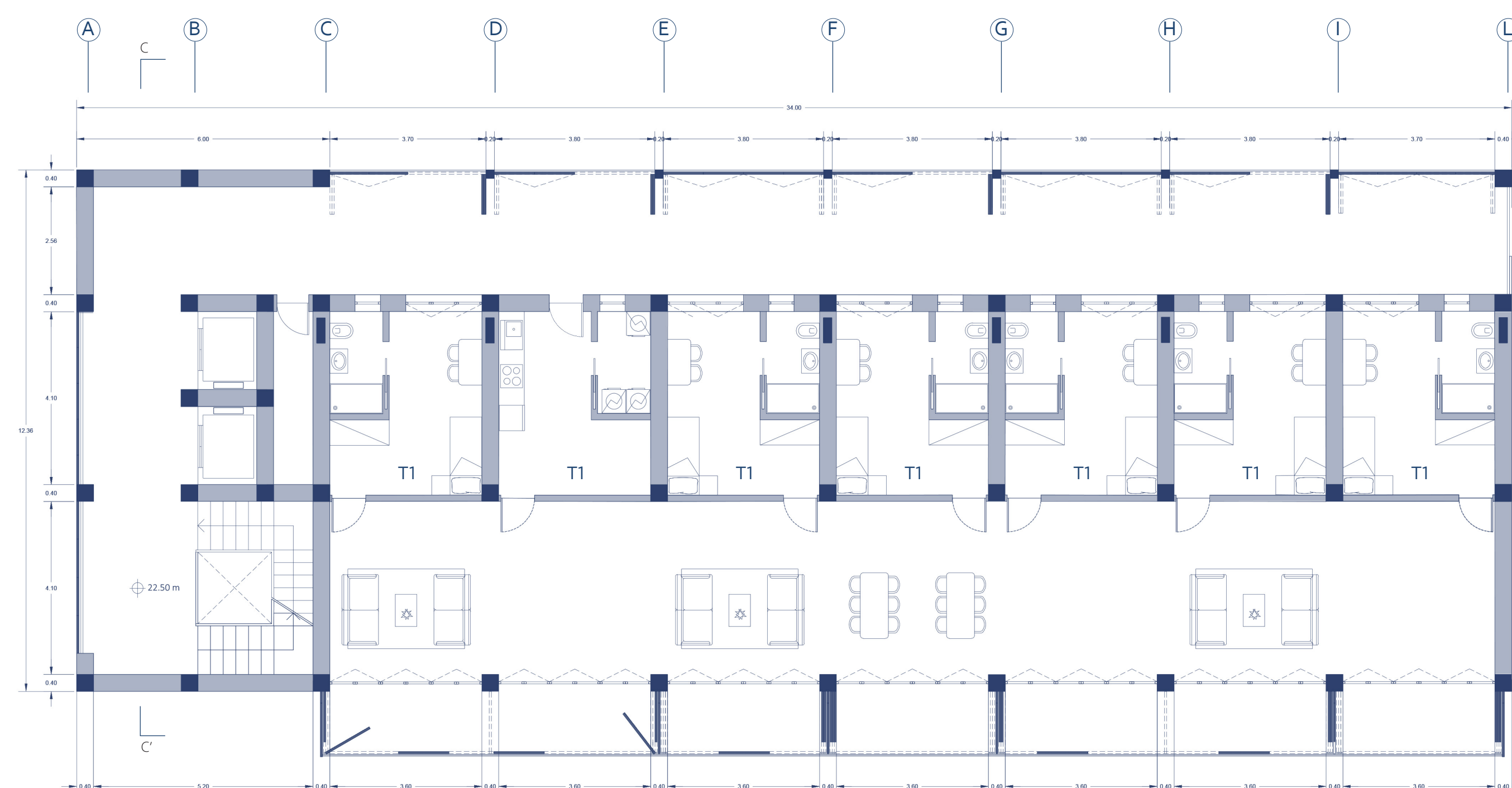
RIMOZIONE LAYER SUPERFLUI  
Sottrazione layer superflui



RIPOSIZIONAMENTO LAYER  
Recupero e riposizionamento layer eliminati



DEFINIZIONE FINALE  
Composizione finale in residenza per studenti



PIANO TIPO C - 1:100

