

# 6

CURRENT STATE  
| ELEVATIONS WITH  
ORTHOPHOTOS  
1:100

## The Tower

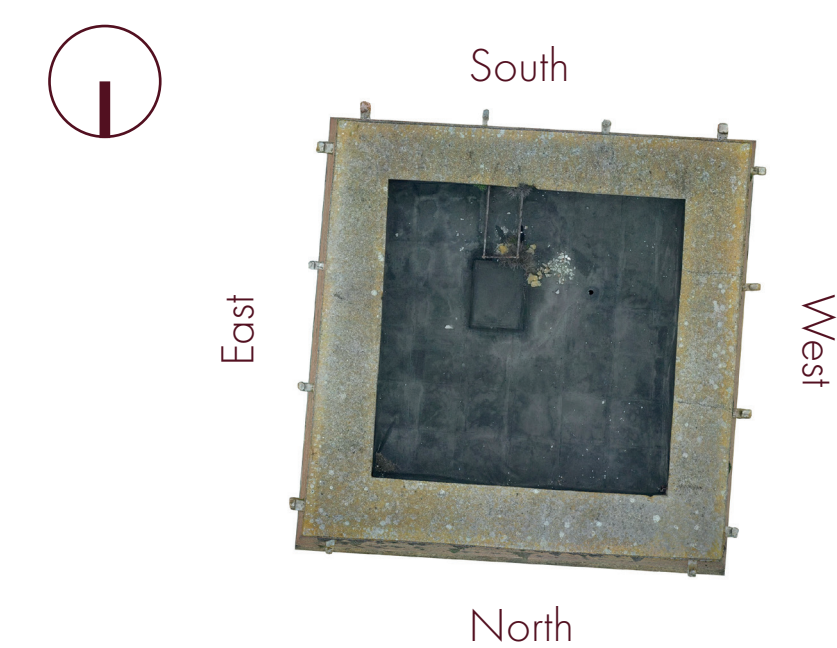
Thanks to the laser scanner and photogrammetric survey it has been possible to obtain a very precise metrical and material survey of the Tower.

The Gambulini's Tower has a quite regular plan of about 7.70m per side, which tapers slightly going upwards. It has a full brick masonry that rests on a stone base, masonry of varying thickness of about 2.50m, and consequent internal compartment free square of about 2.50m per side. In height it reaches about 37m above ground, and then continues with approximately 6m underground to form the foundations and at the same time to define an underground space, currently not accessible. The interior of the tower is divided into further three additional spaces all accessible through the Archivio rooms.

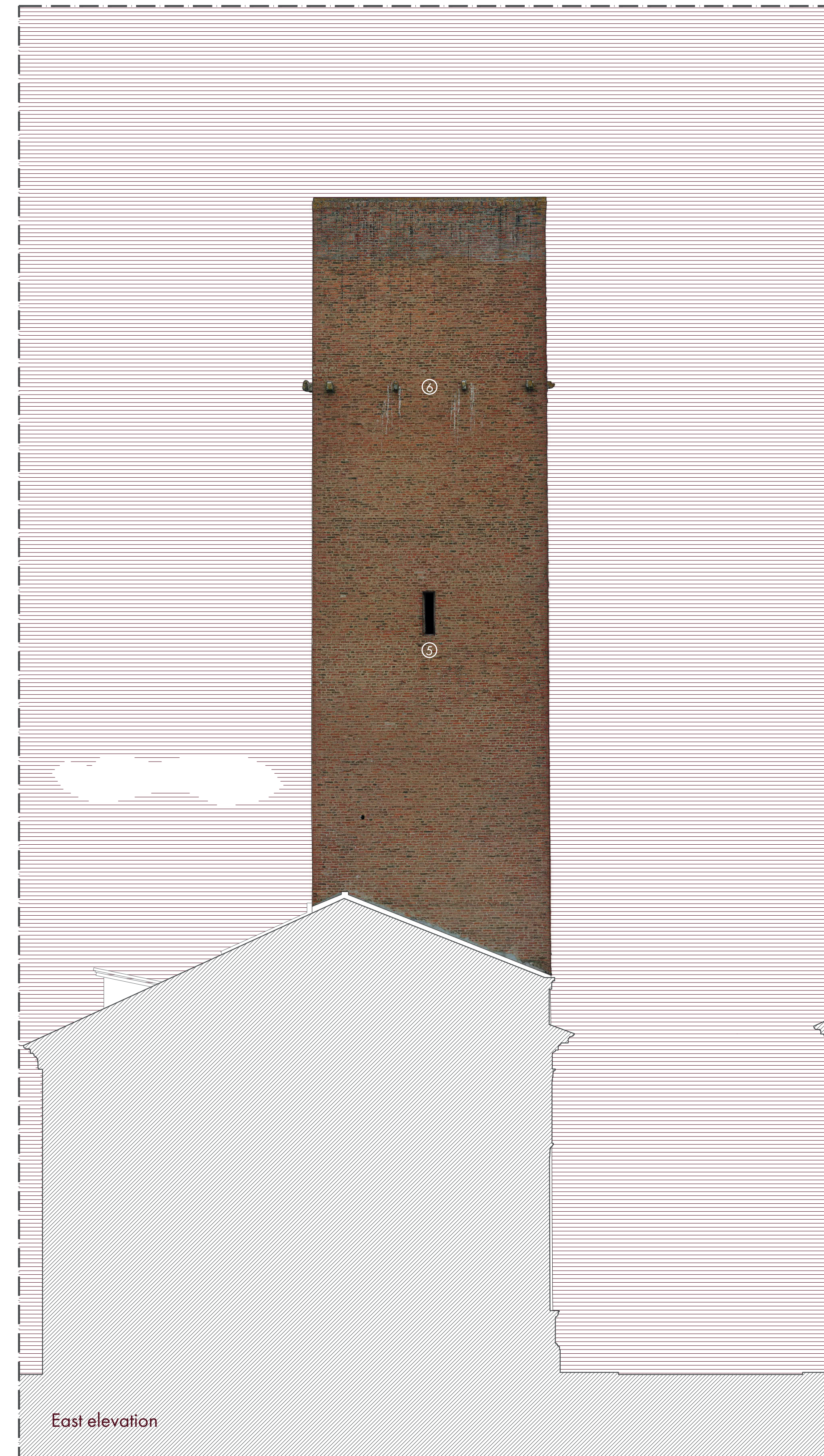
The presence of stone supports in the lower and upper part suggests that some balconies connecting it to the adjacent buildings had to run all around it. The lower one, in particular, could be the original level of the main entrance to the Tower, even if no traces about older apertures have been found in its masonry.

On the South elevation is still clearly visible the trace of an old sundial that decorated the rear facade, as we can see in an old picture available in the adjacent Archivio di Stato.

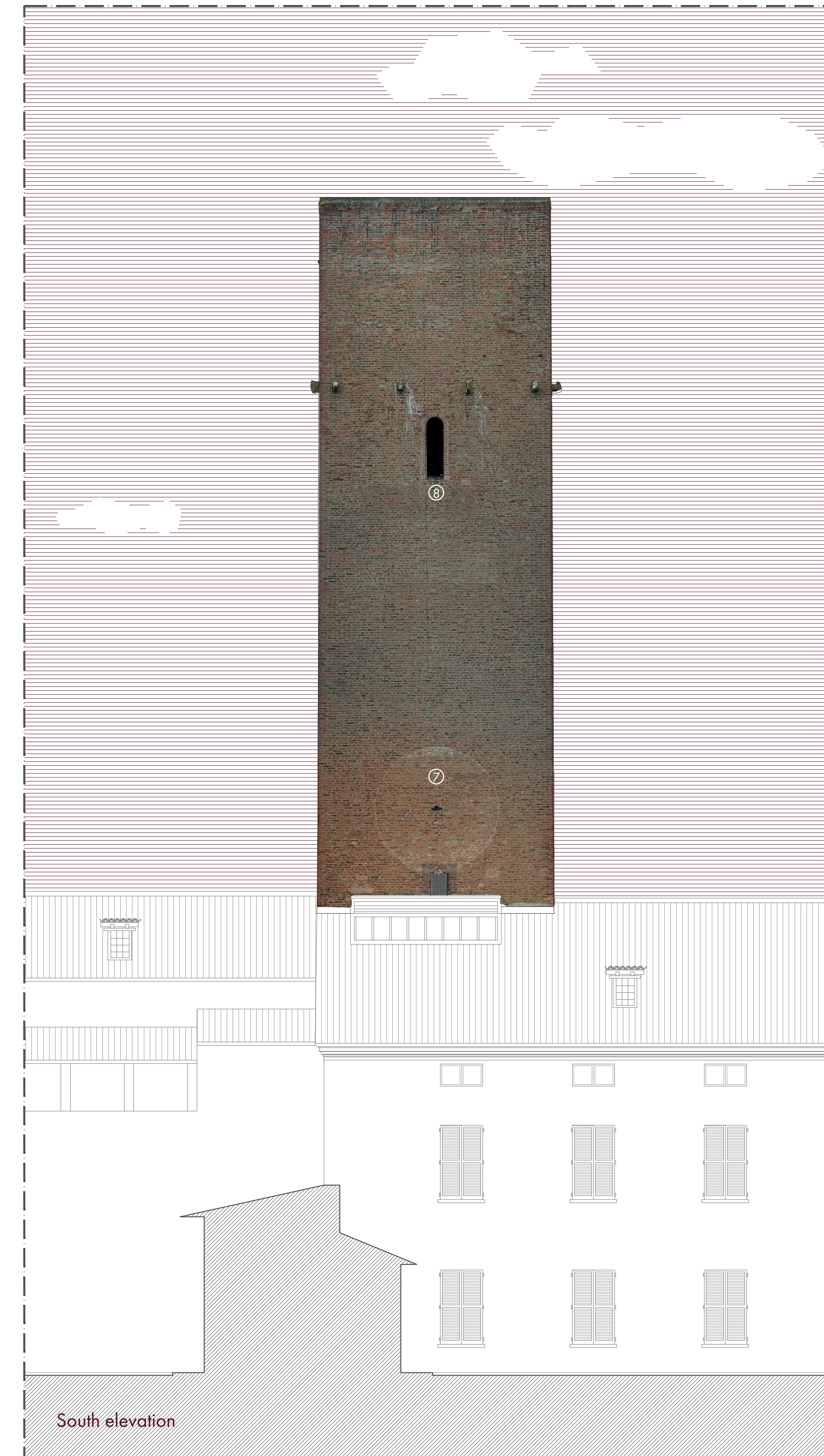
Although in the historical engravings found it was always represented with a four-pitched roof, there are currently no evident signs of this ancient coverage.



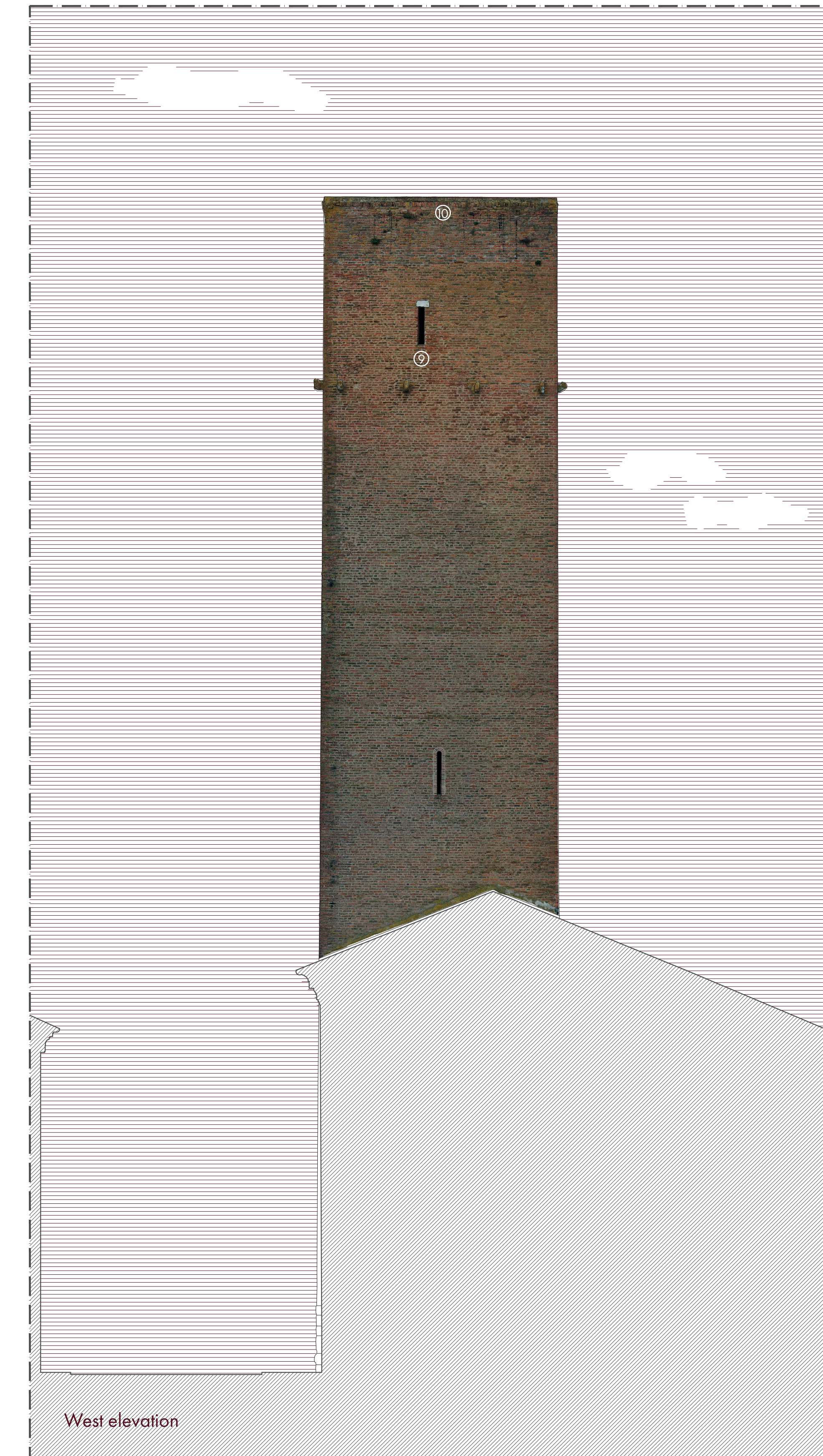
North elevation



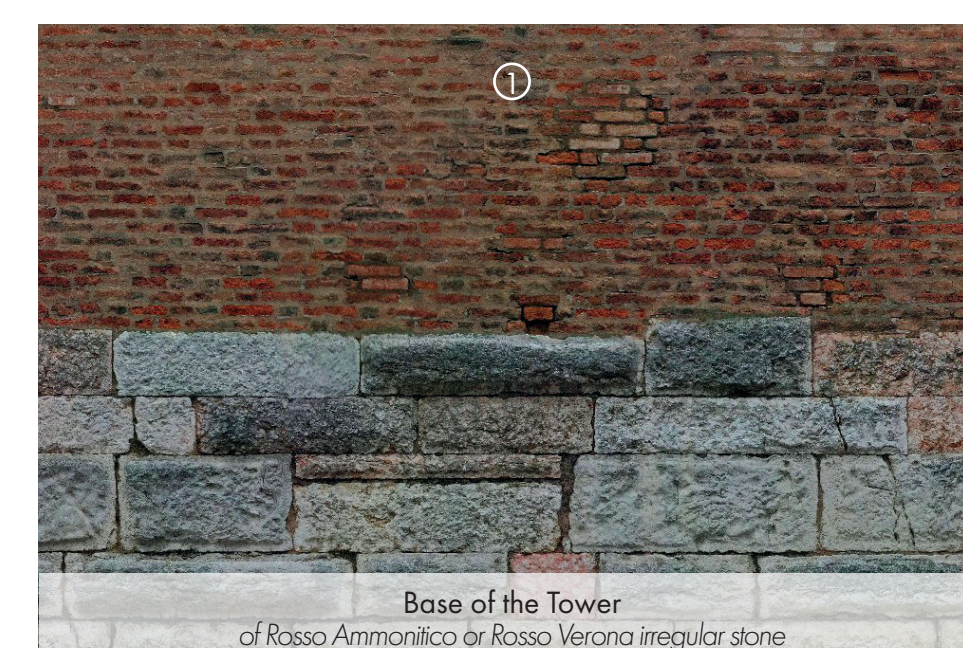
East elevation



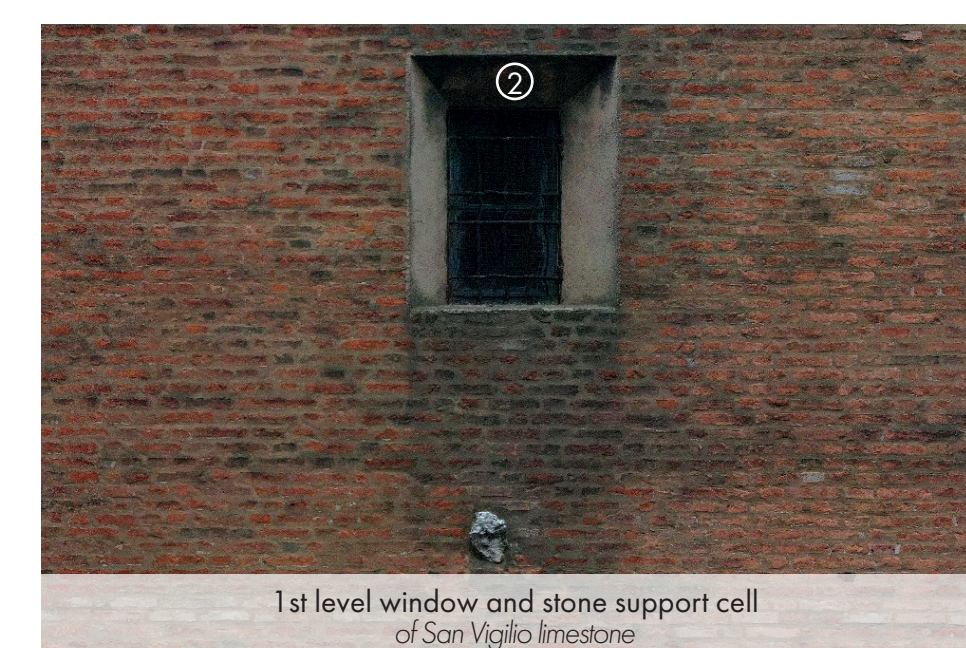
South elevation



West elevation



Base of the Tower  
of Rosso Armonico or Rosso Verona irregular stone



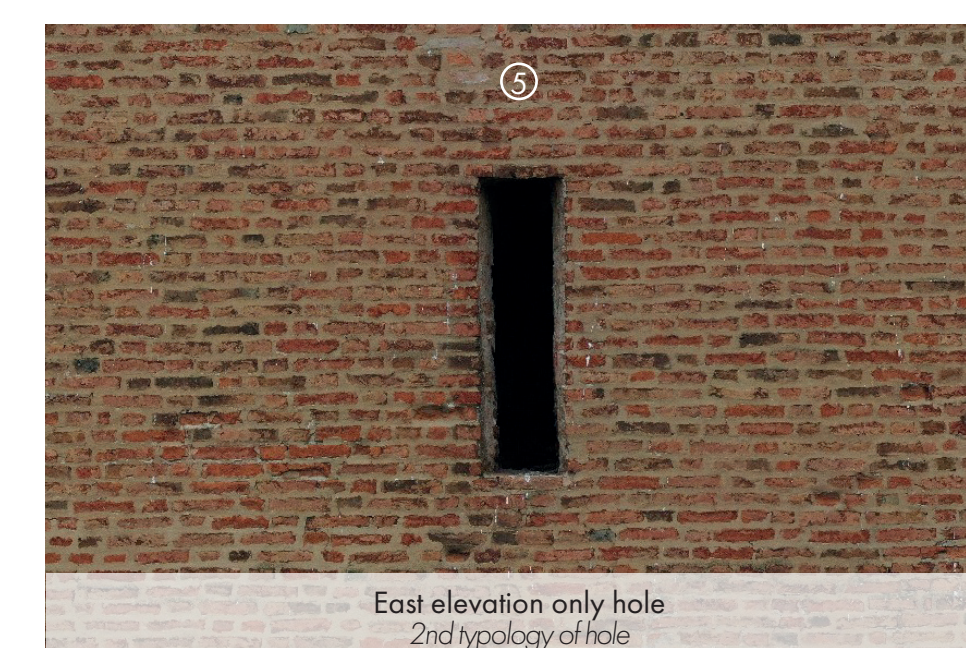
1st level window and stone support cell  
of San Vigilio limestone



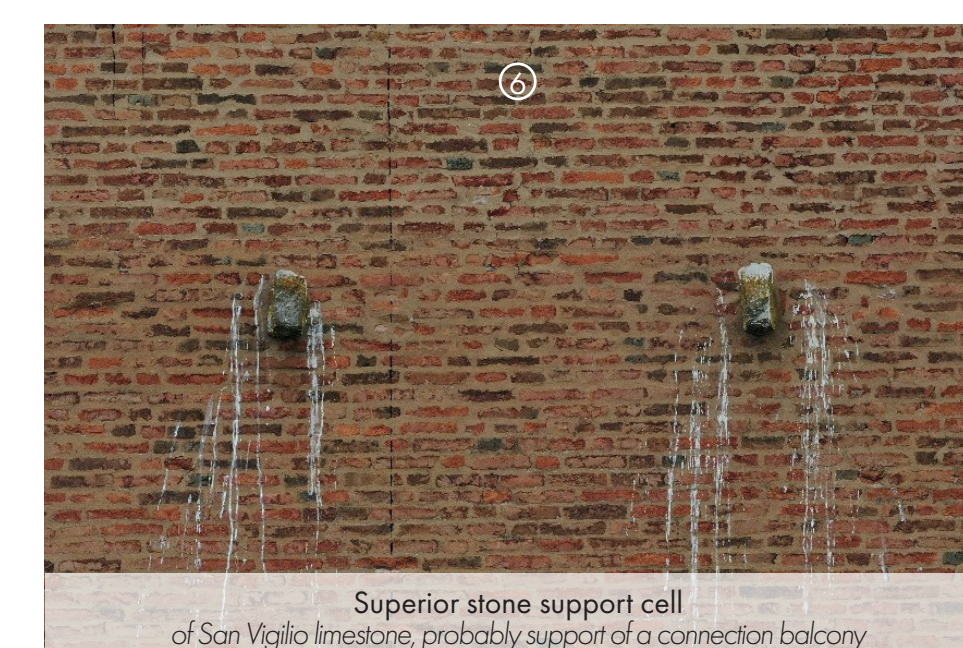
2nd level window  
1st typology of hole



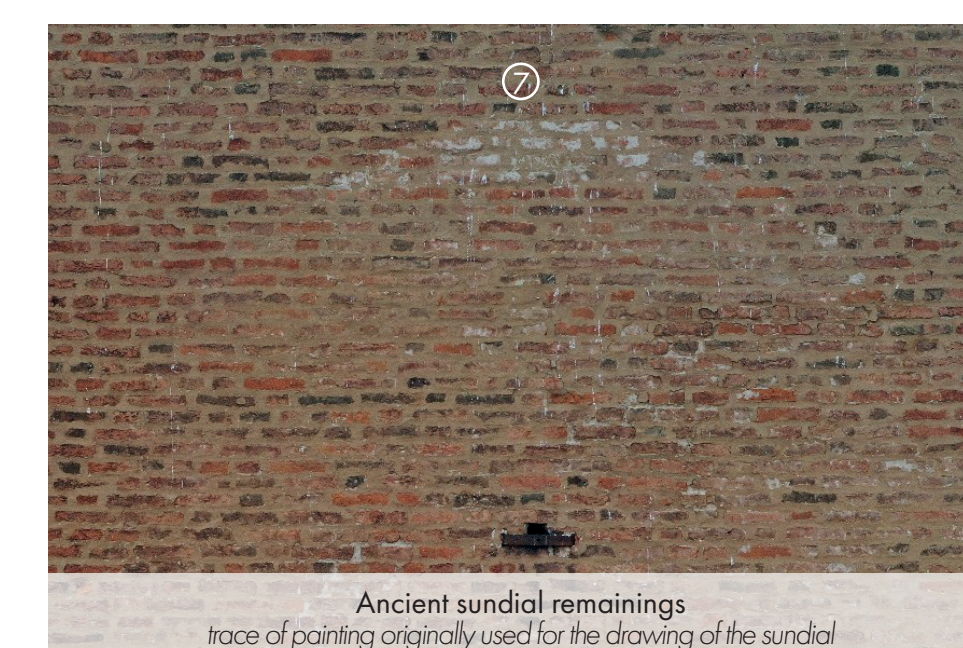
Thick cornice  
of concrete



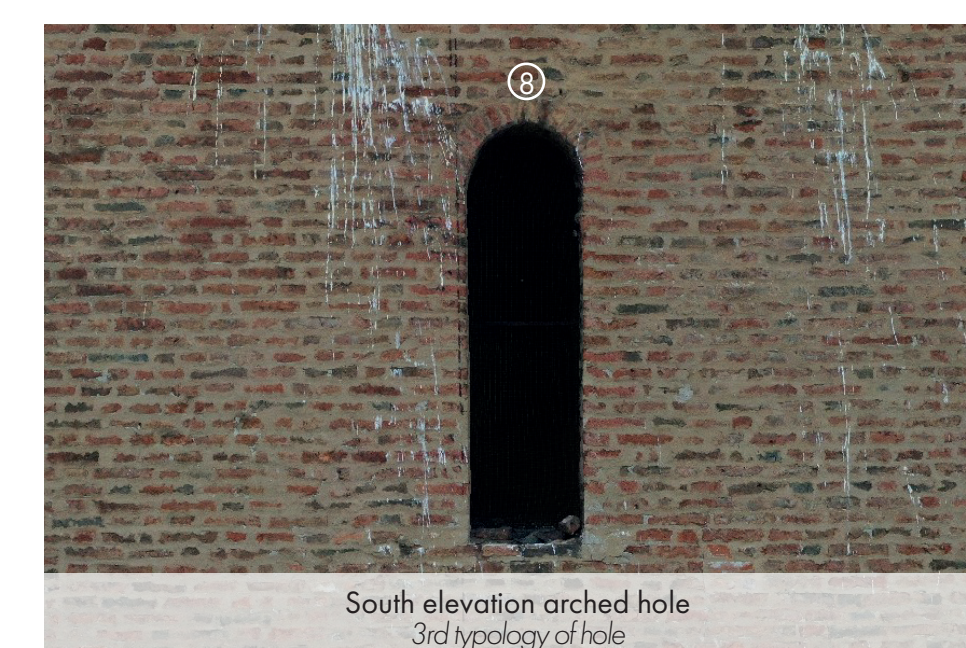
East elevation only hole  
2nd typology of hole



Superior stone support cell  
of San Vigilio limestone, probably support of a connection balcony



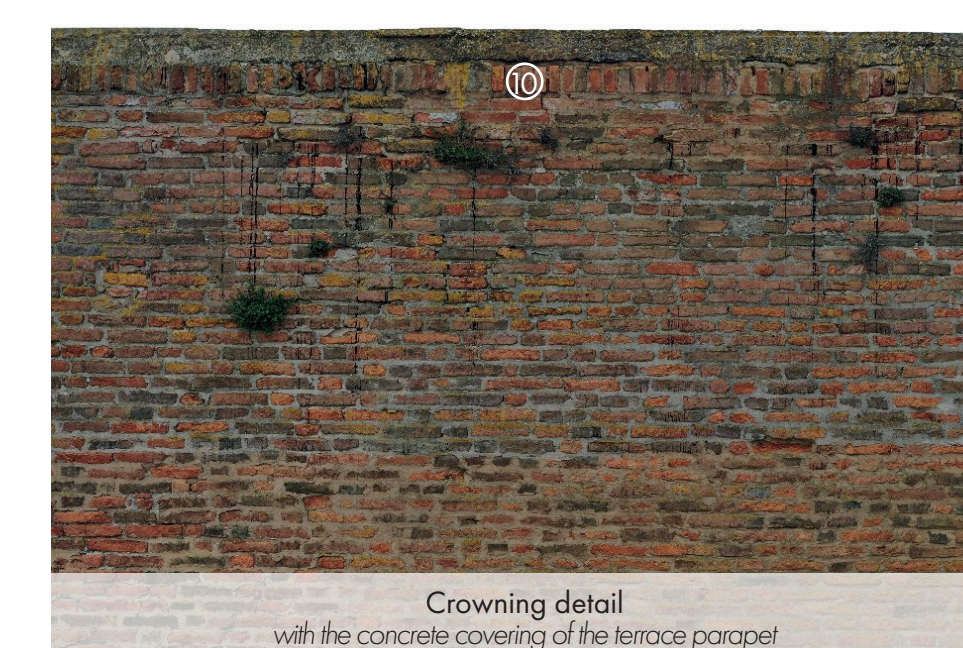
Ancient sundial remains  
trace of painting originally used for the drawing of the sundial



South elevation arched hole  
3rd typology of hole



East elevation hole  
with a different stone architrave detail



Crowning detail  
with the concrete covering of the terrace parapet