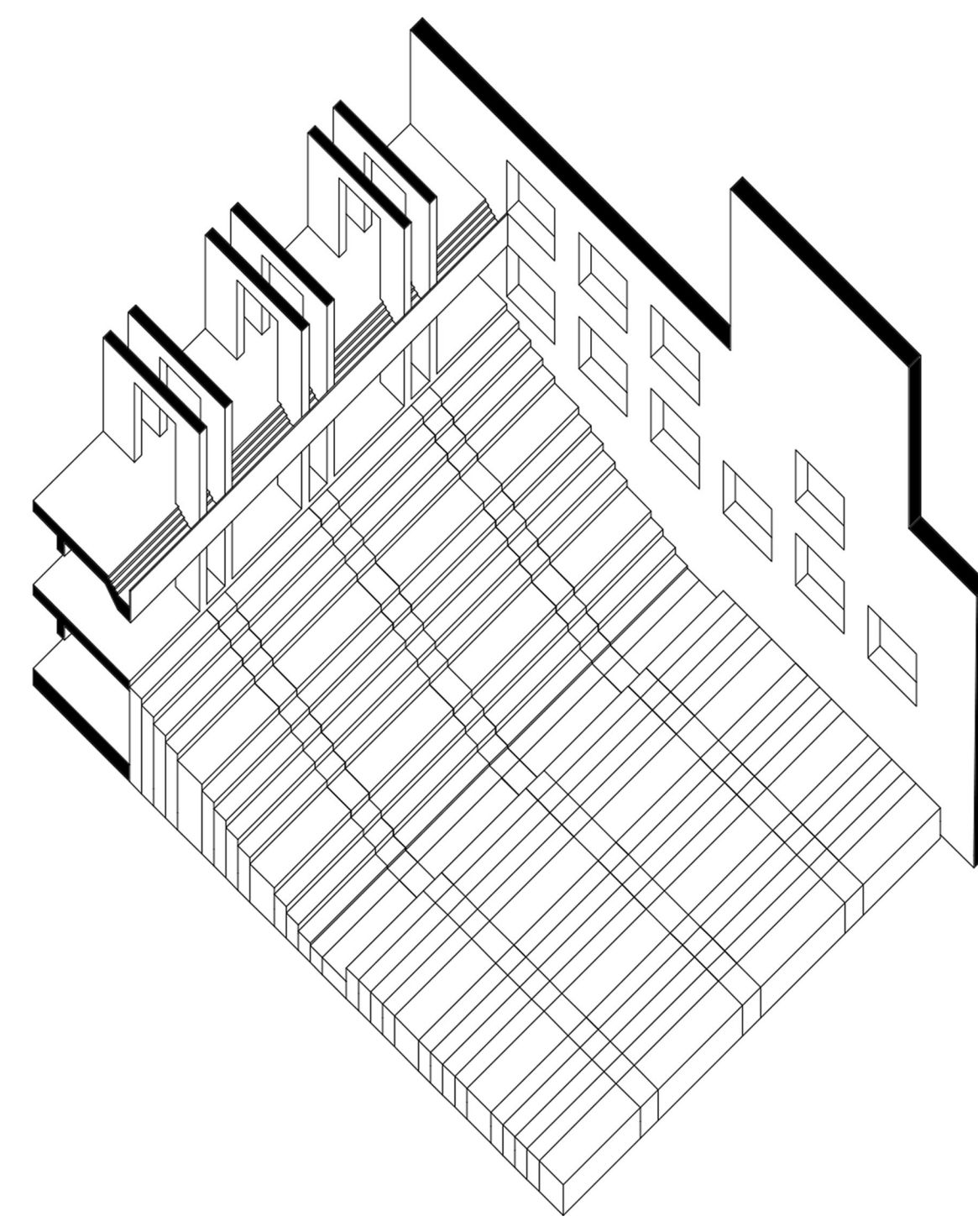
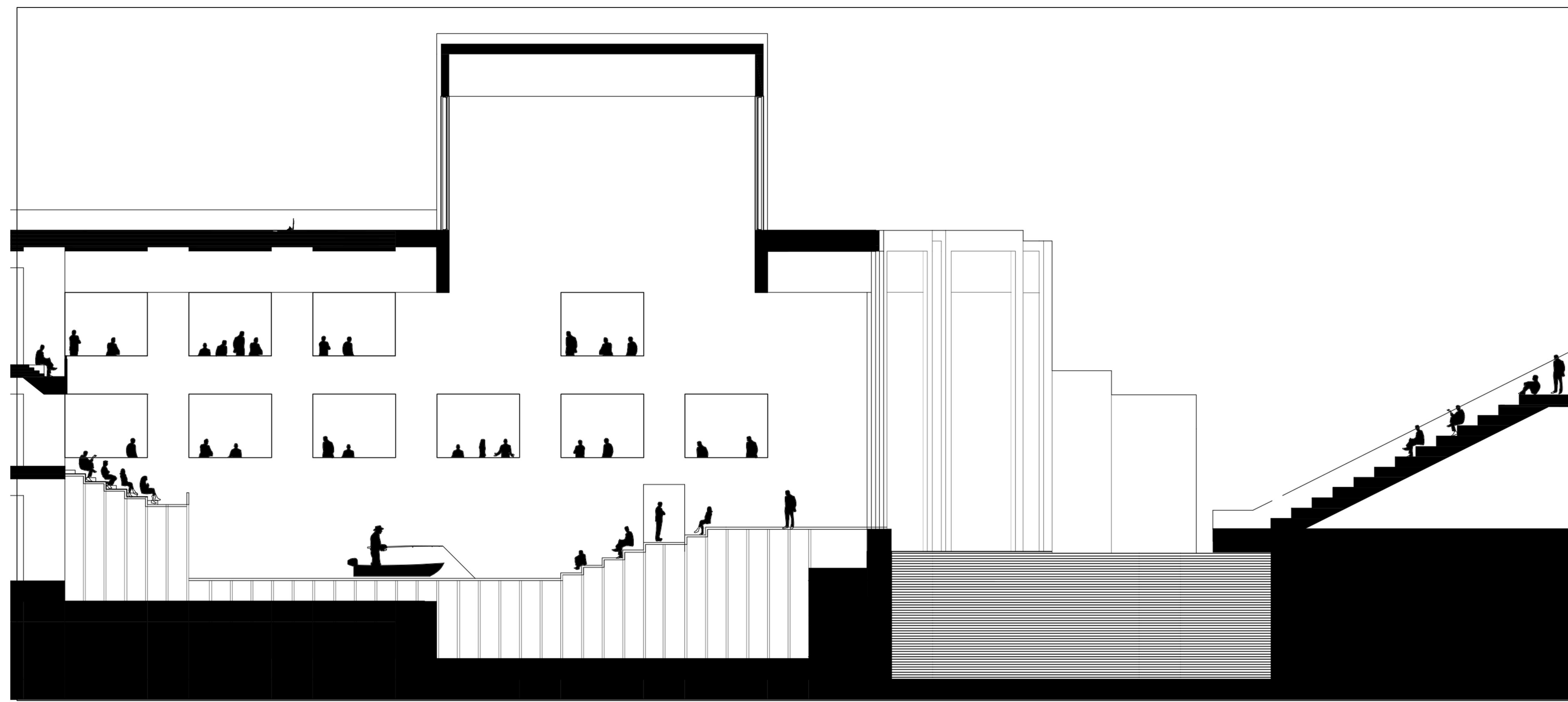


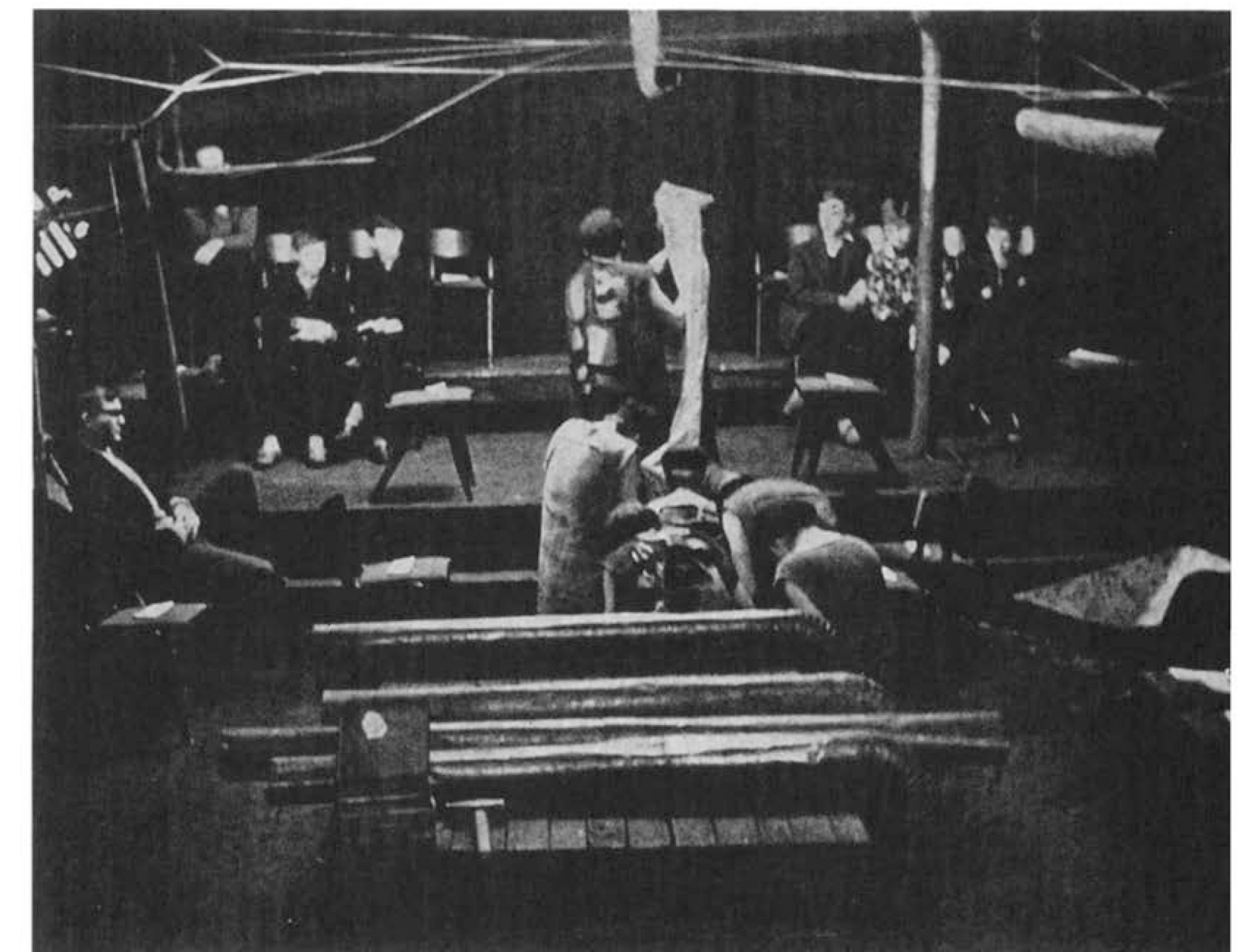
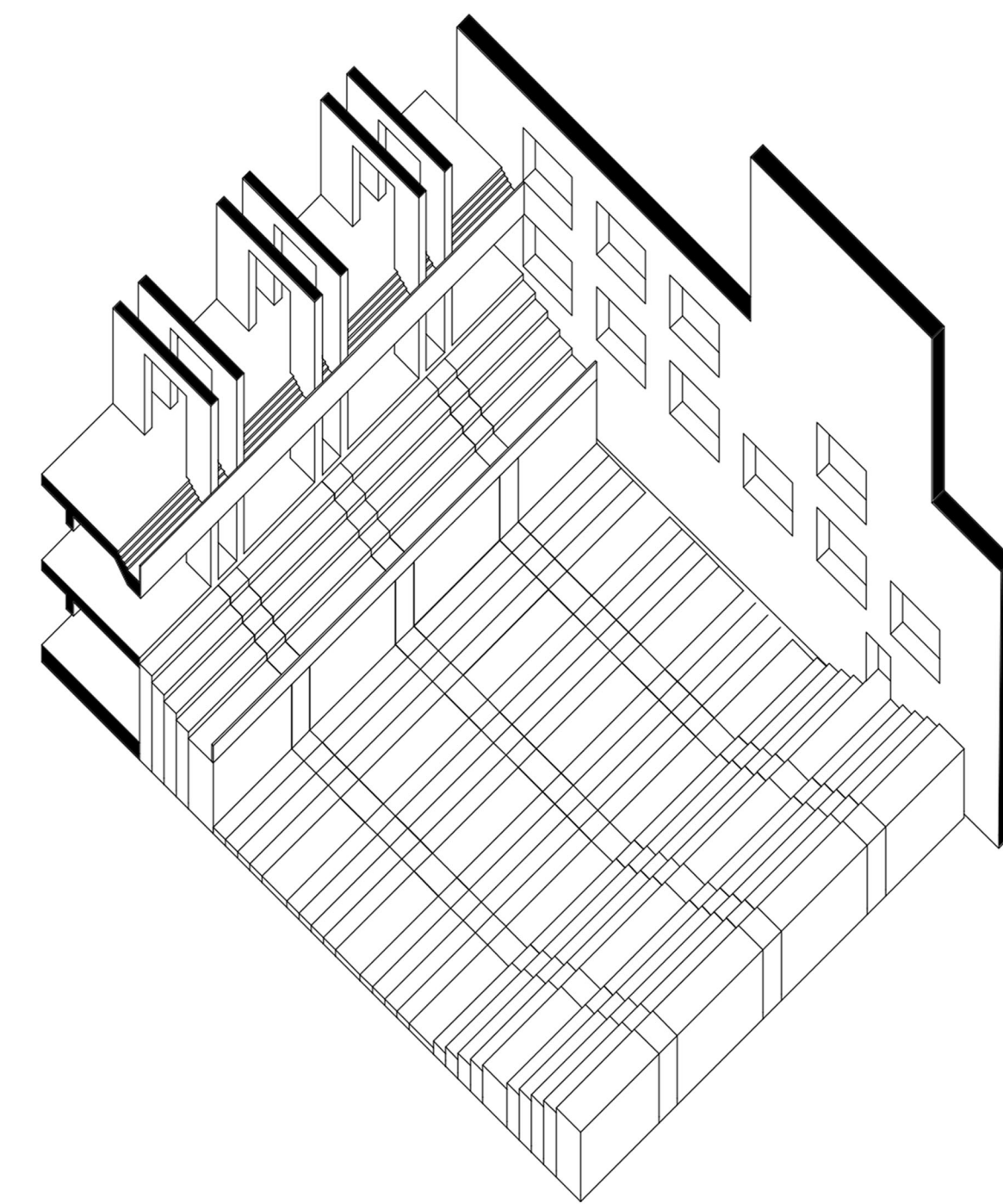
CONVENTIONAL THEATER



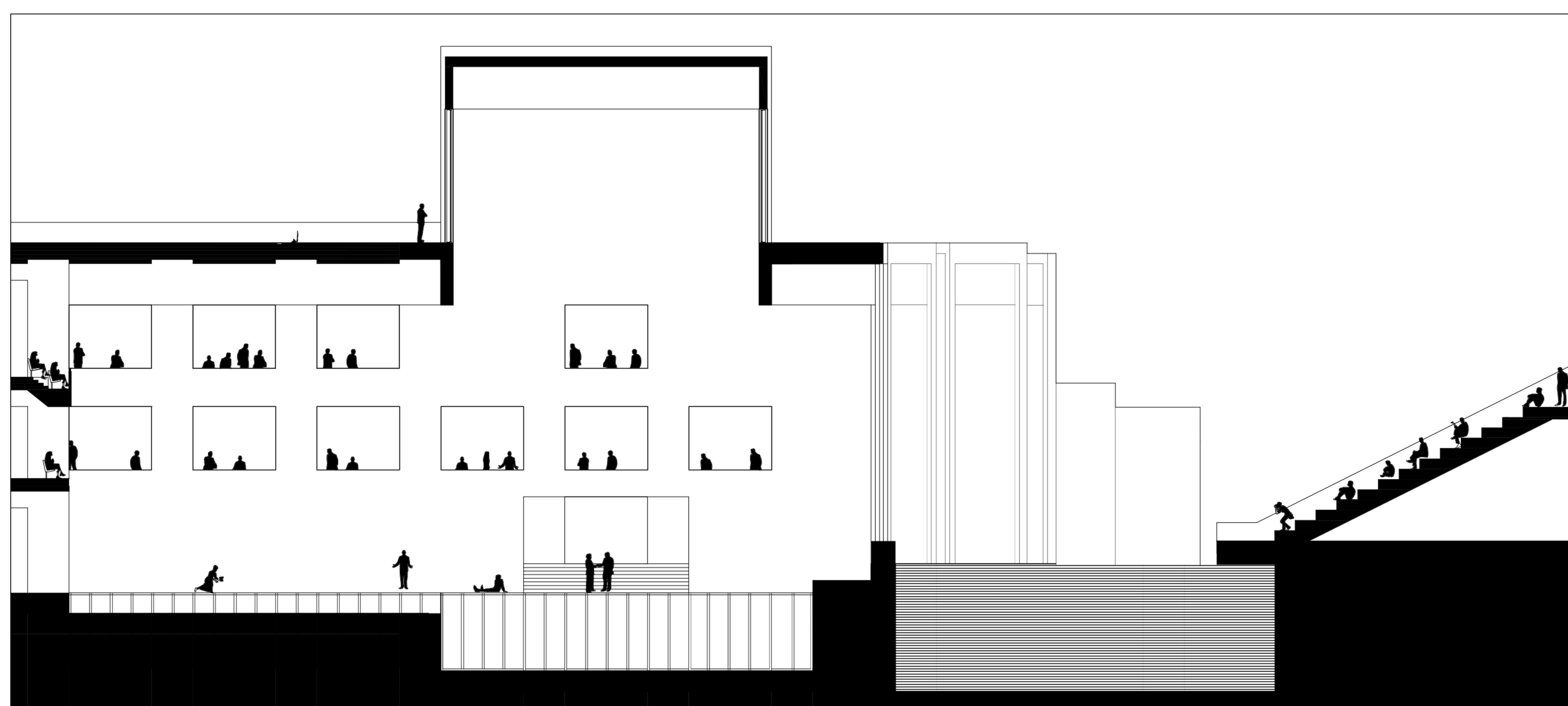
KING LEAR - PRODUCTION BY PETER BROOK



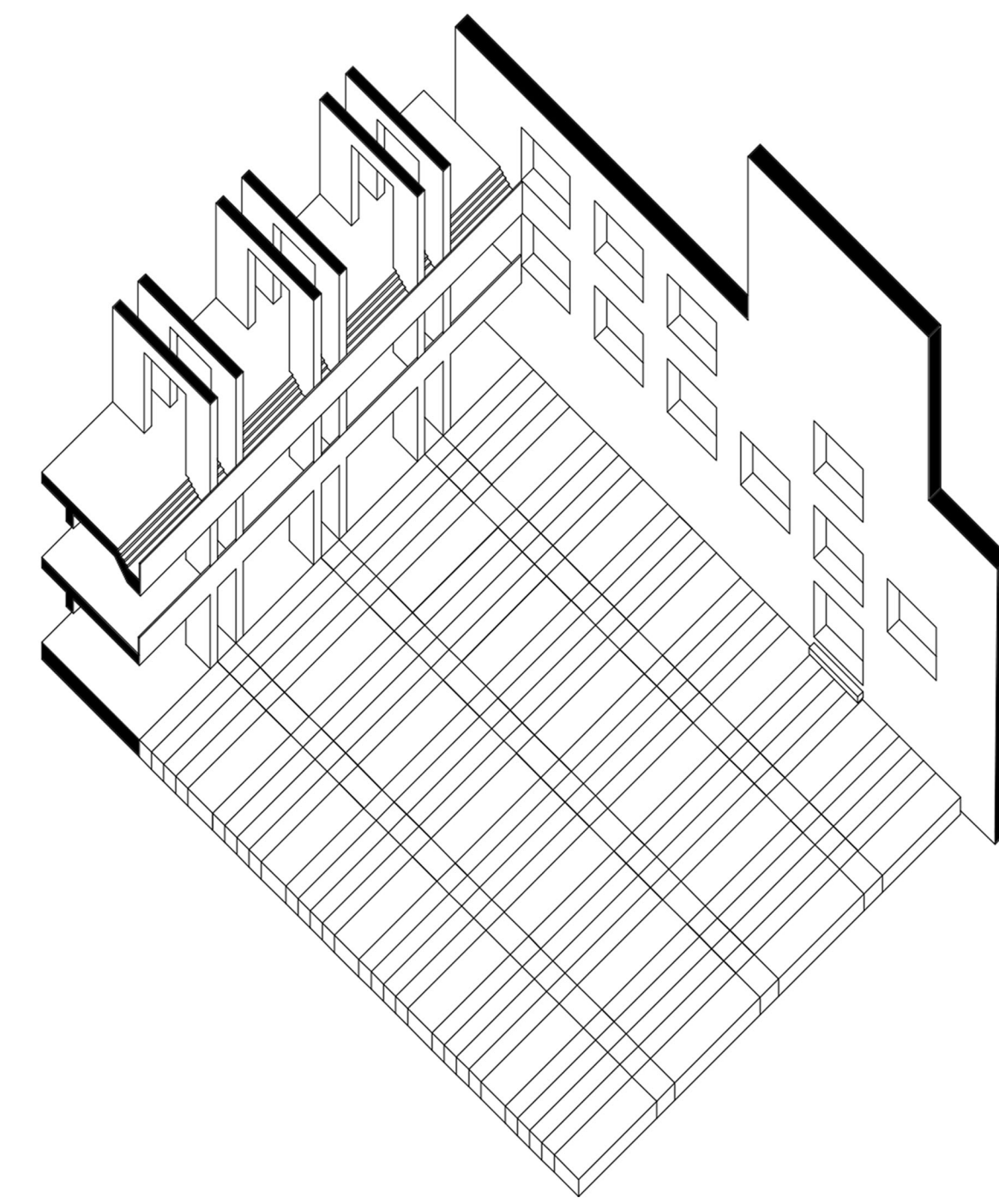
TRANSFORMATION 1 - CENTRAL STAGE



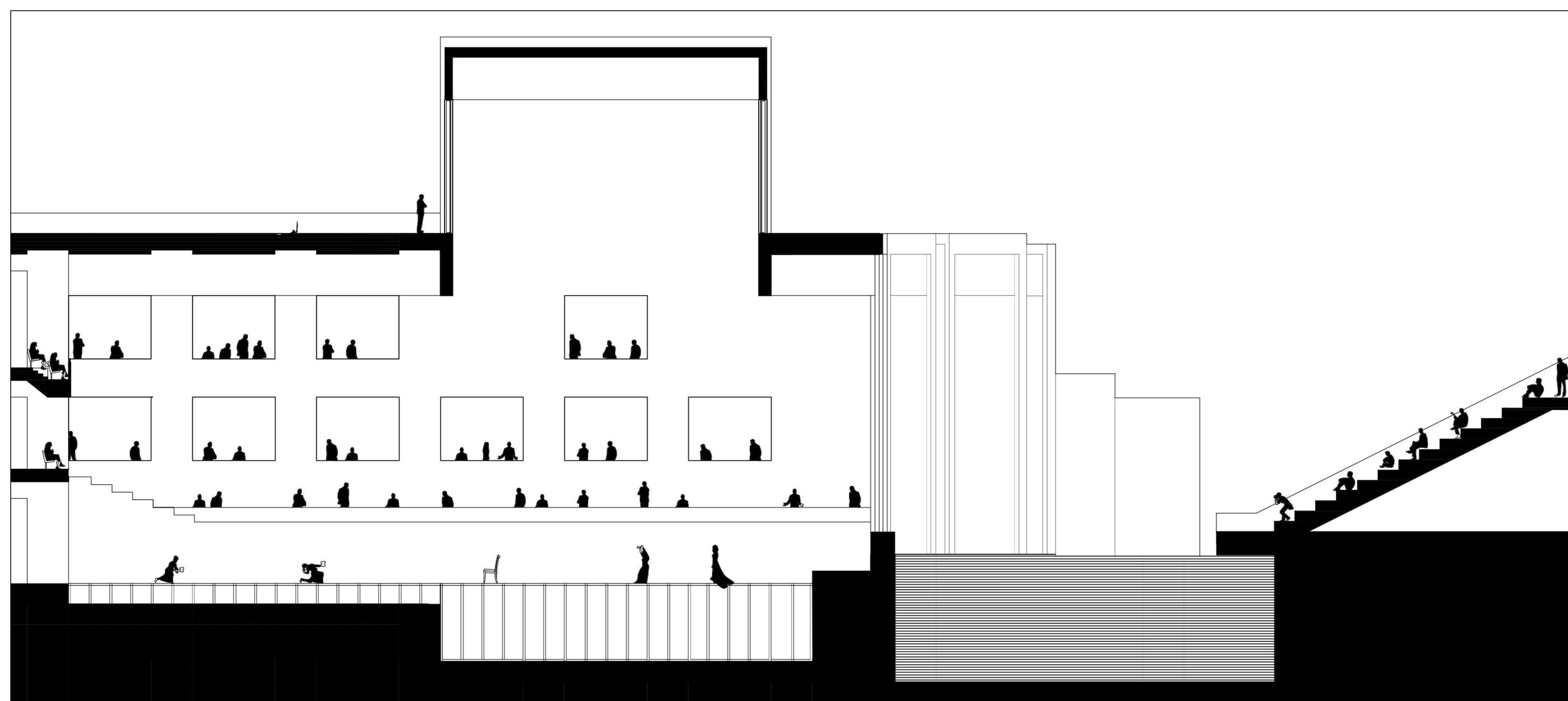
AKROPOLIS - PRODUCTION BY JERZY GROTOWSKI



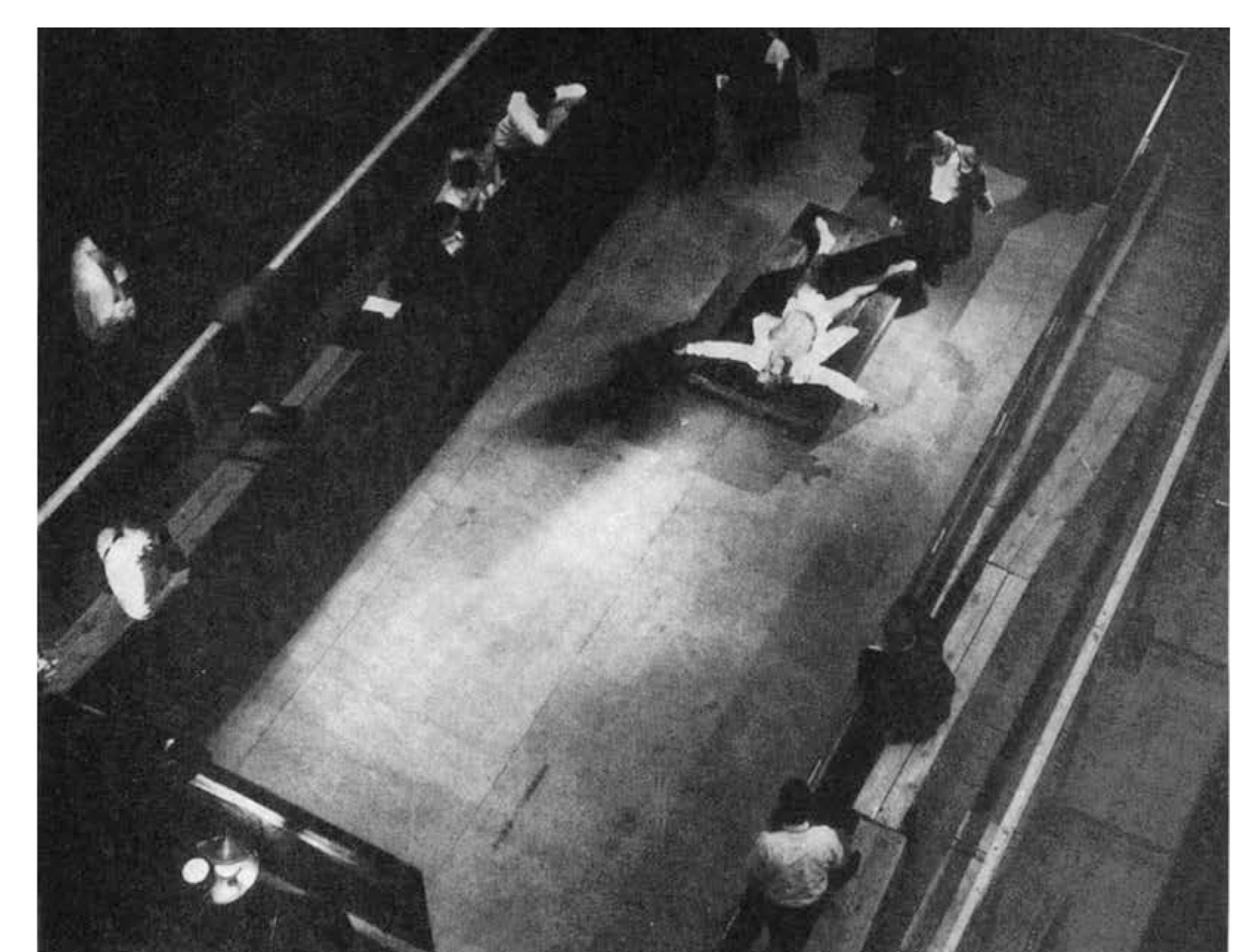
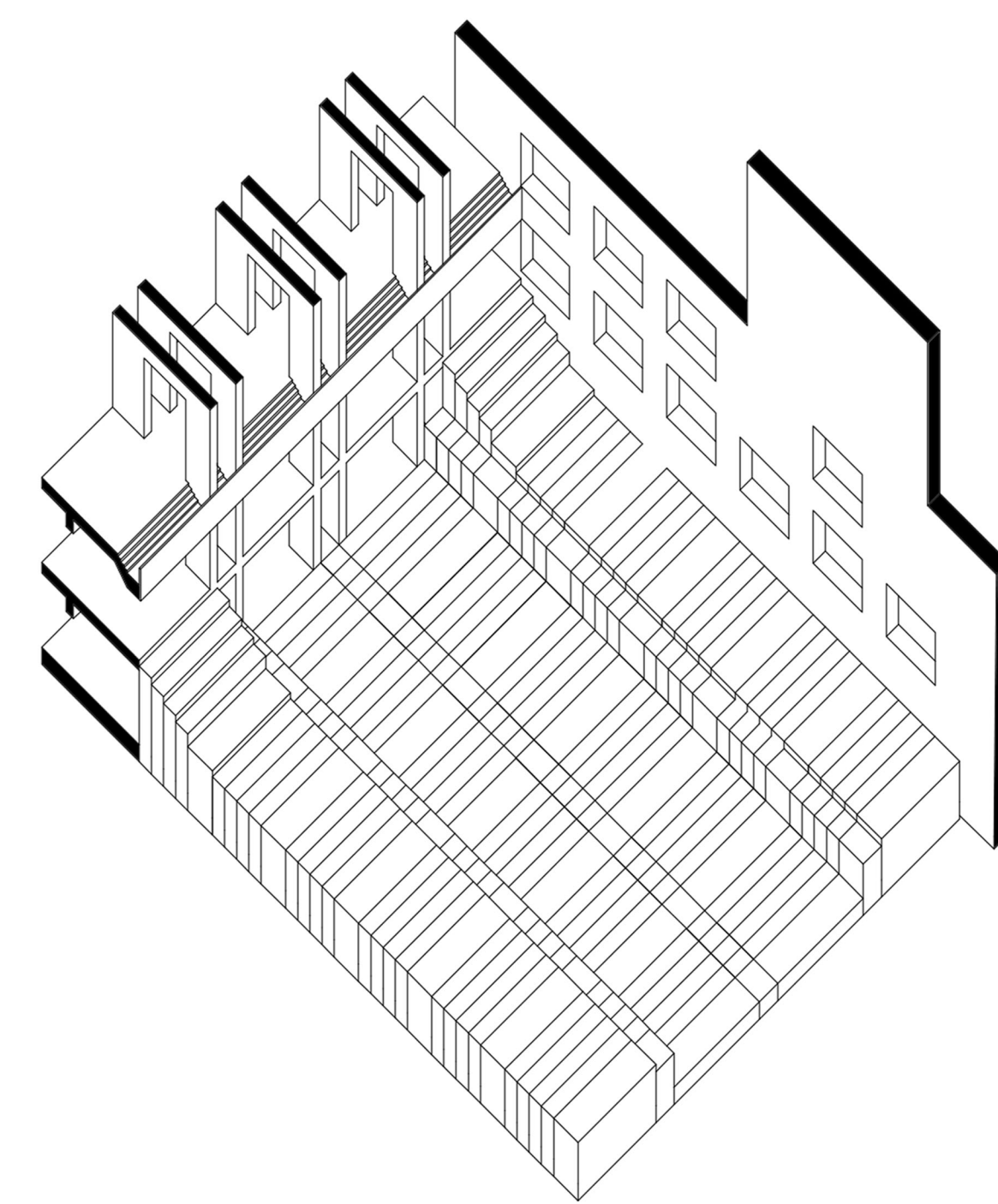
TRANSFORMATION 2 - FLAT STAGE



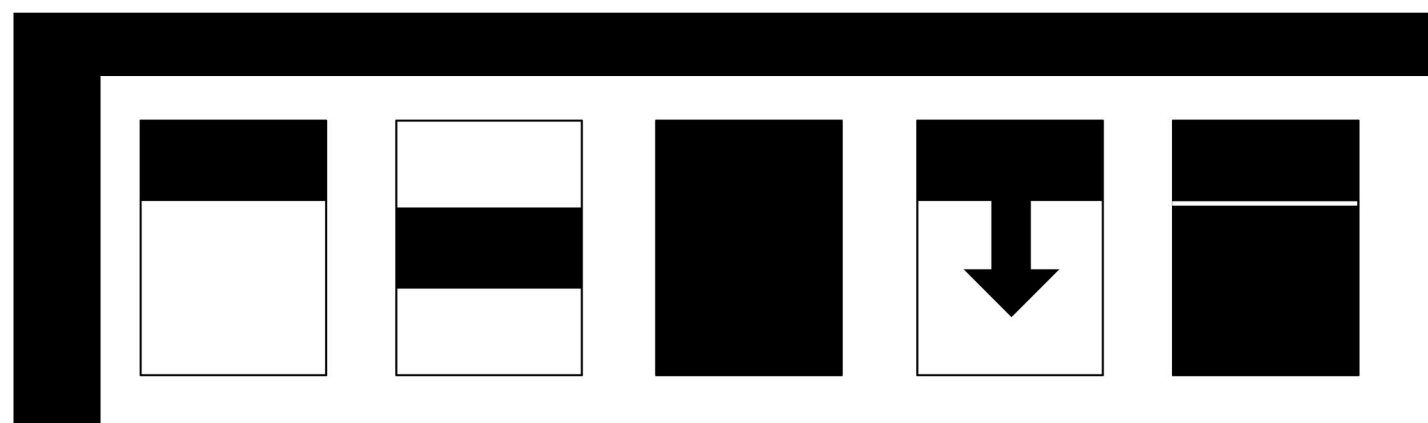
MIDSUMMER NIGHT'S DREAM - PRODUCTION BY PETER BROOK



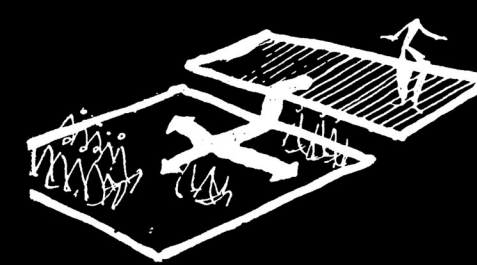
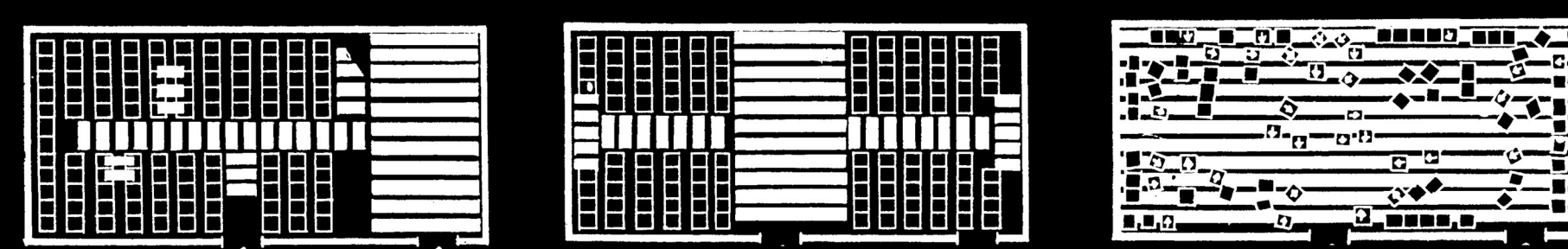
TRANSFORMATION 3 - PROMENADE STAGE



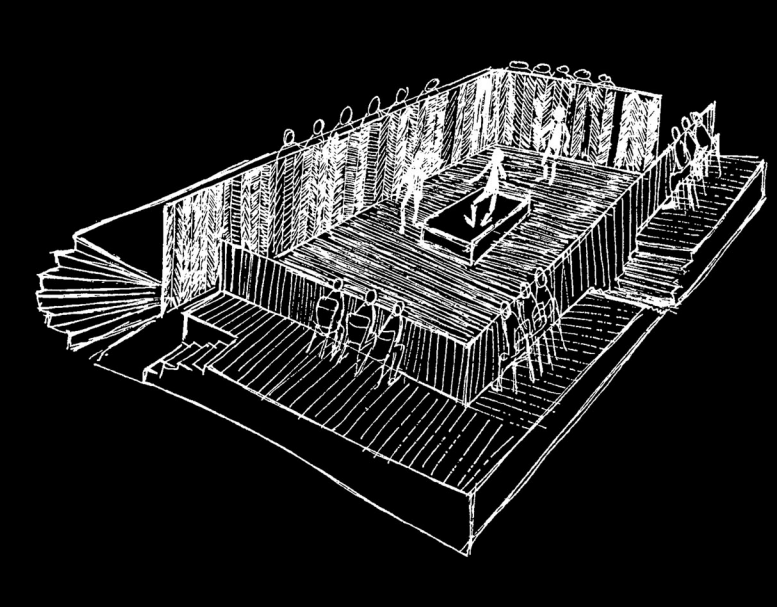
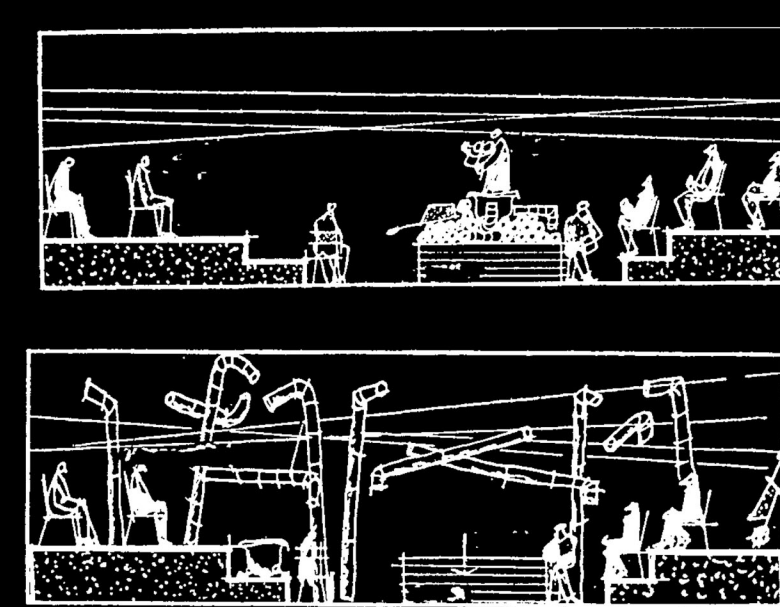
CONSTANT PRINCE - PRODUCTION BY JERZY GROTOWSKI



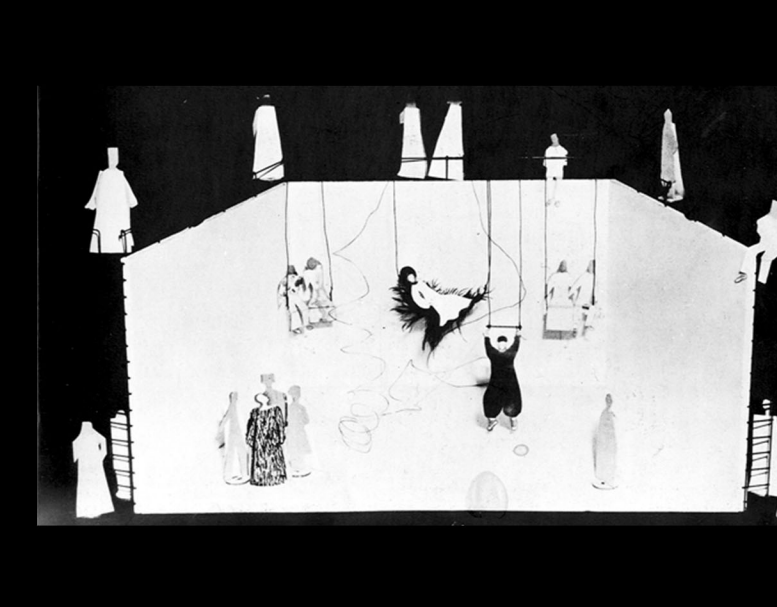
ACTORS AND AUDIENCE RELATIONSHIP



AKROPOLIS - GROTOWSKI



CONSTANT PRINCE - GROTOWSKI



MIDSUMMER NIGHT'S DREAM - BROOK



