



NORTH EAST ELEVATION

SCALE 1:300

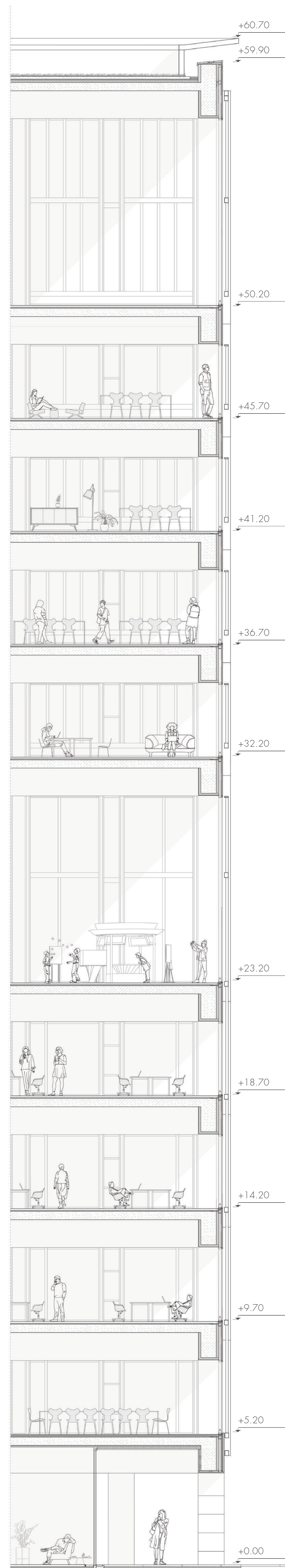
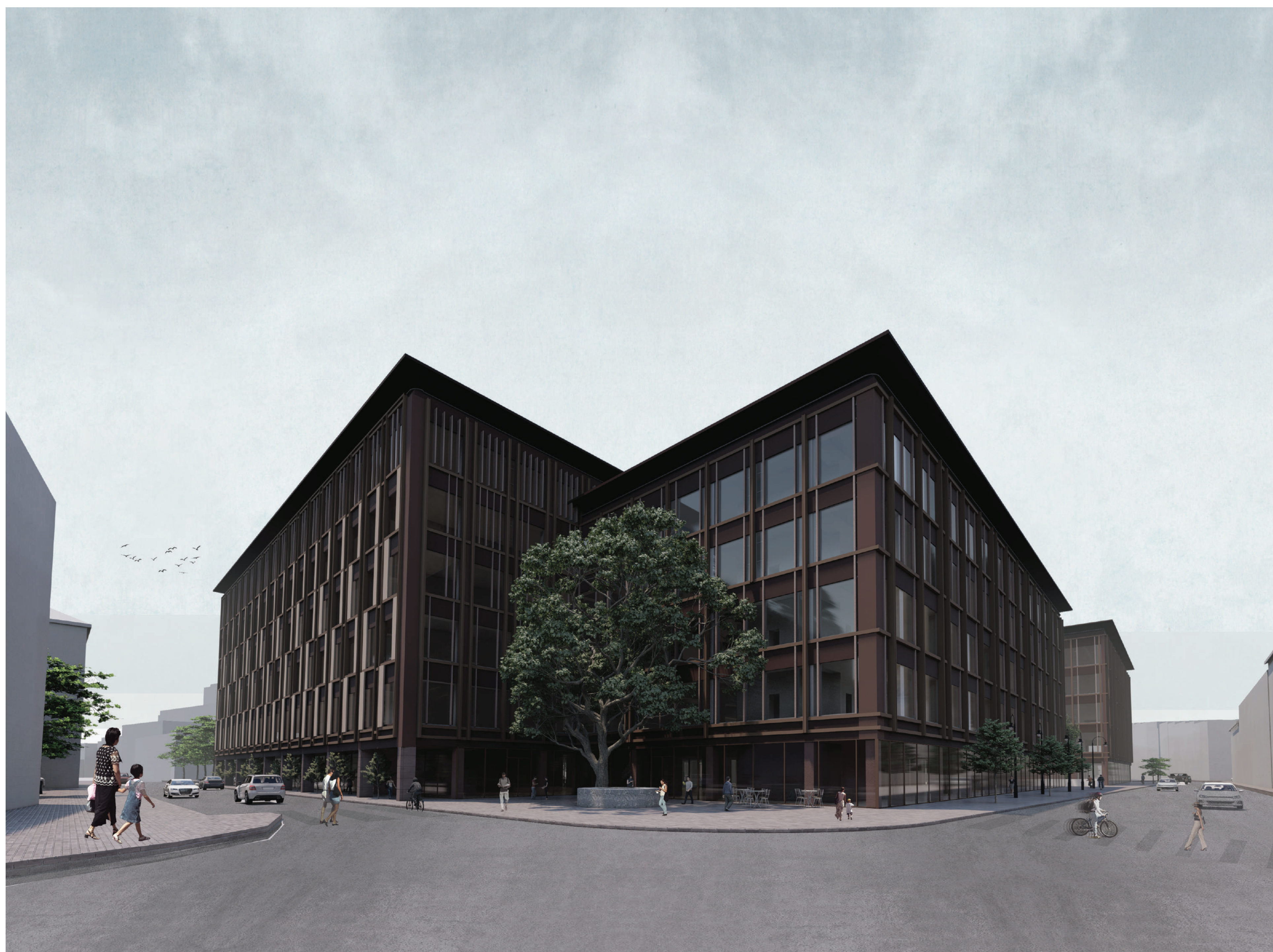


SOUTH WEST ELEVATION

SCALE 1:300



MAIN SECTION 1:50 DETAIL



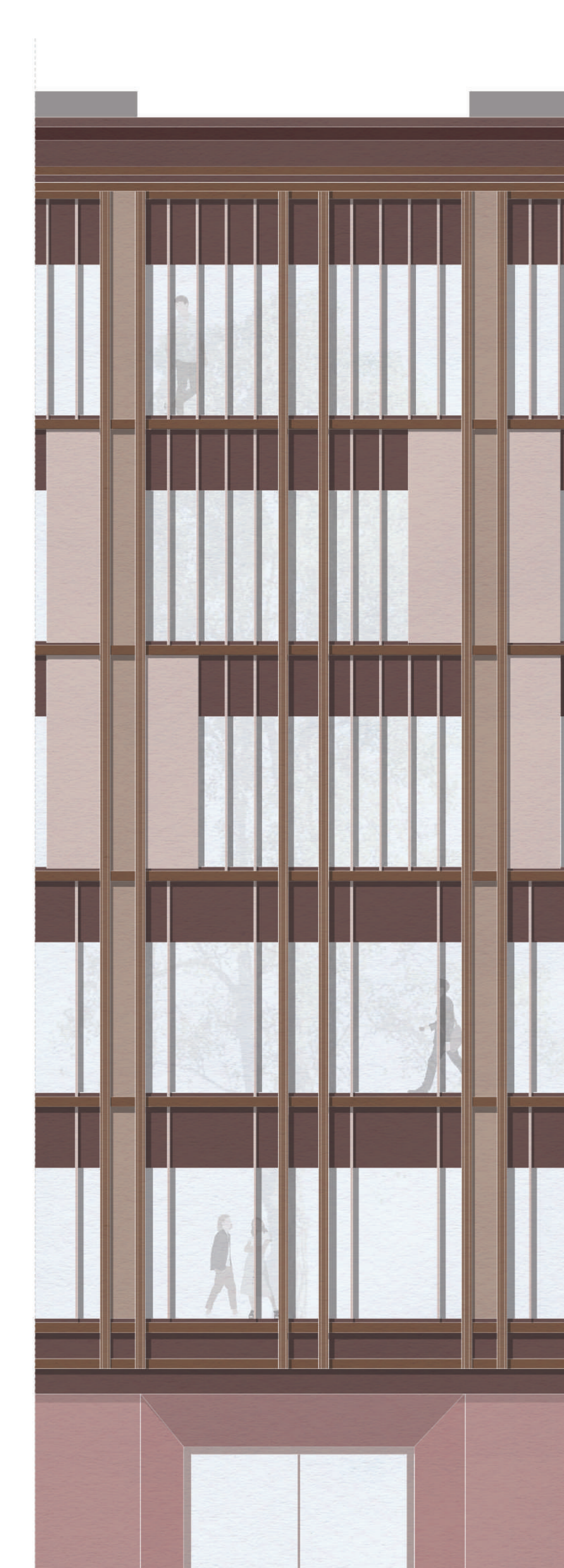
FACILITY TOWER PARTIAL SECTION



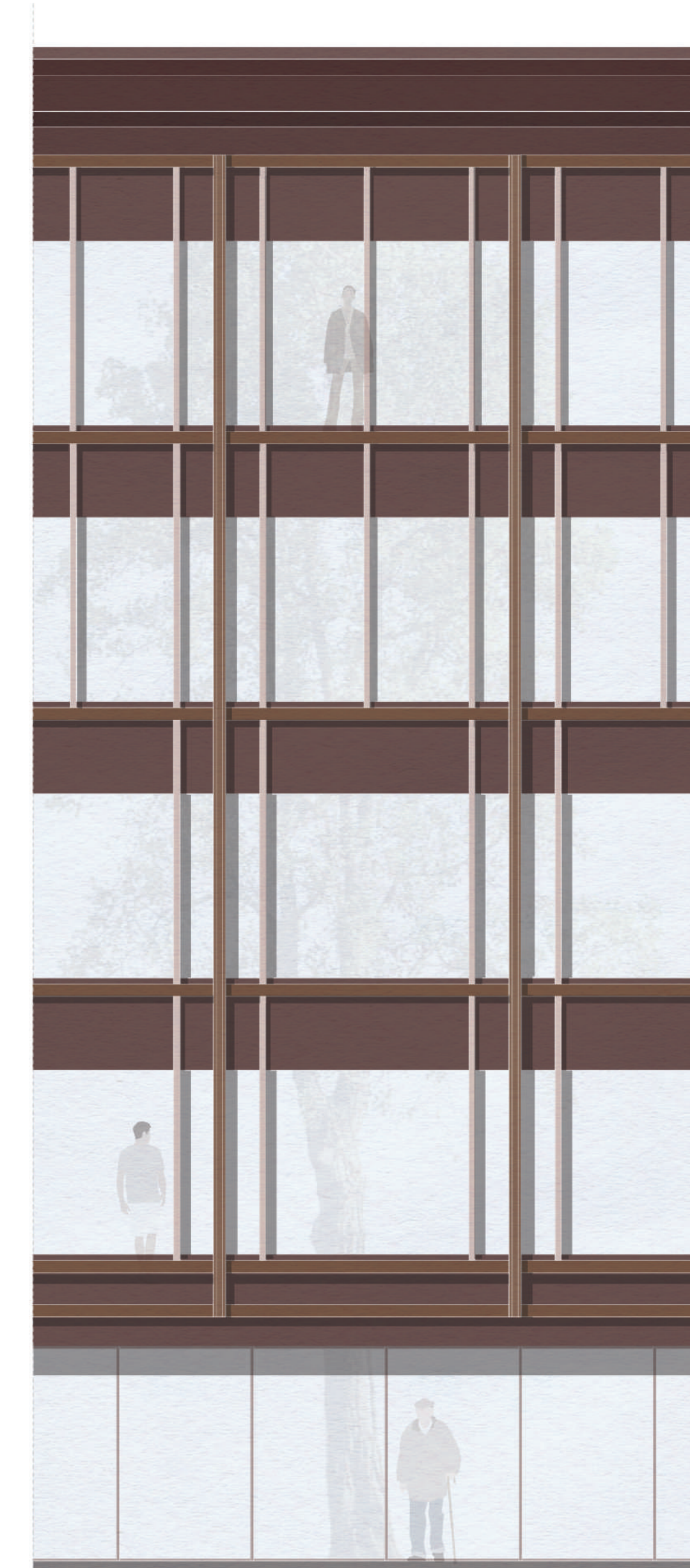
FACILITY TOWER | PARTIAL SE ELEVATION



PHYSICS BUILDING | PARTIAL SE ELEVATION



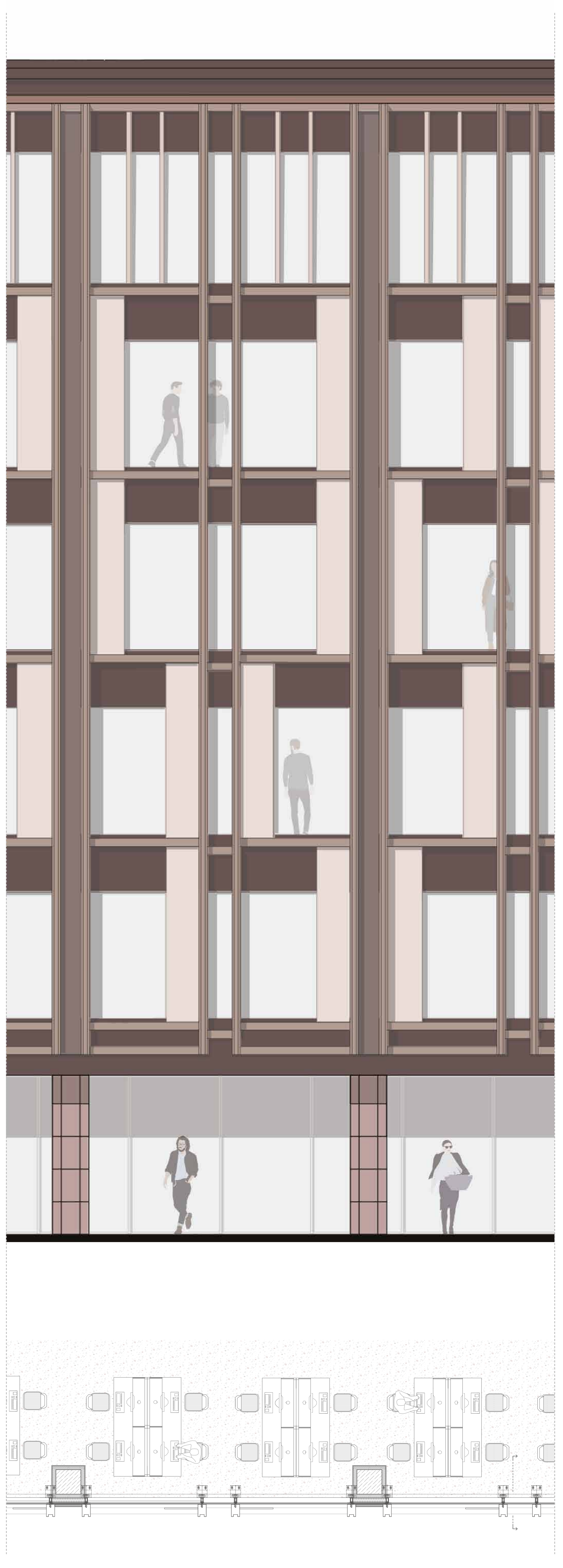
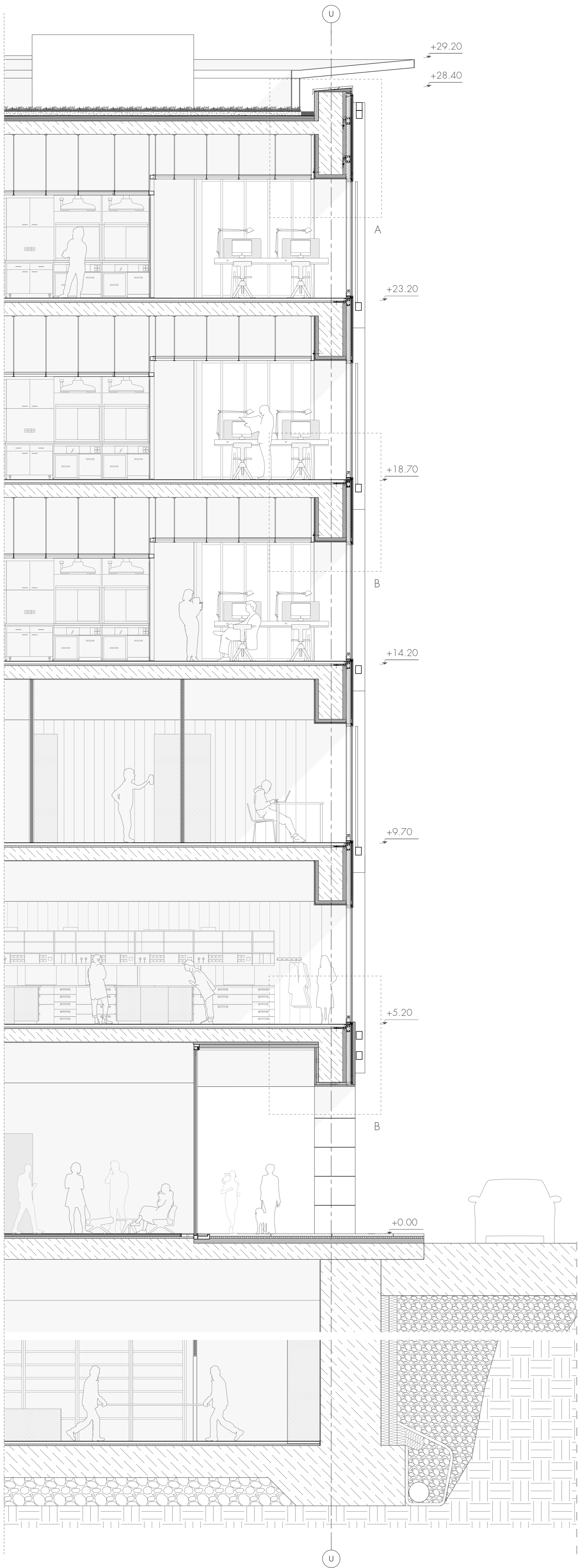
PHYSICS BUILDING | PARTIAL SE ELEVATION

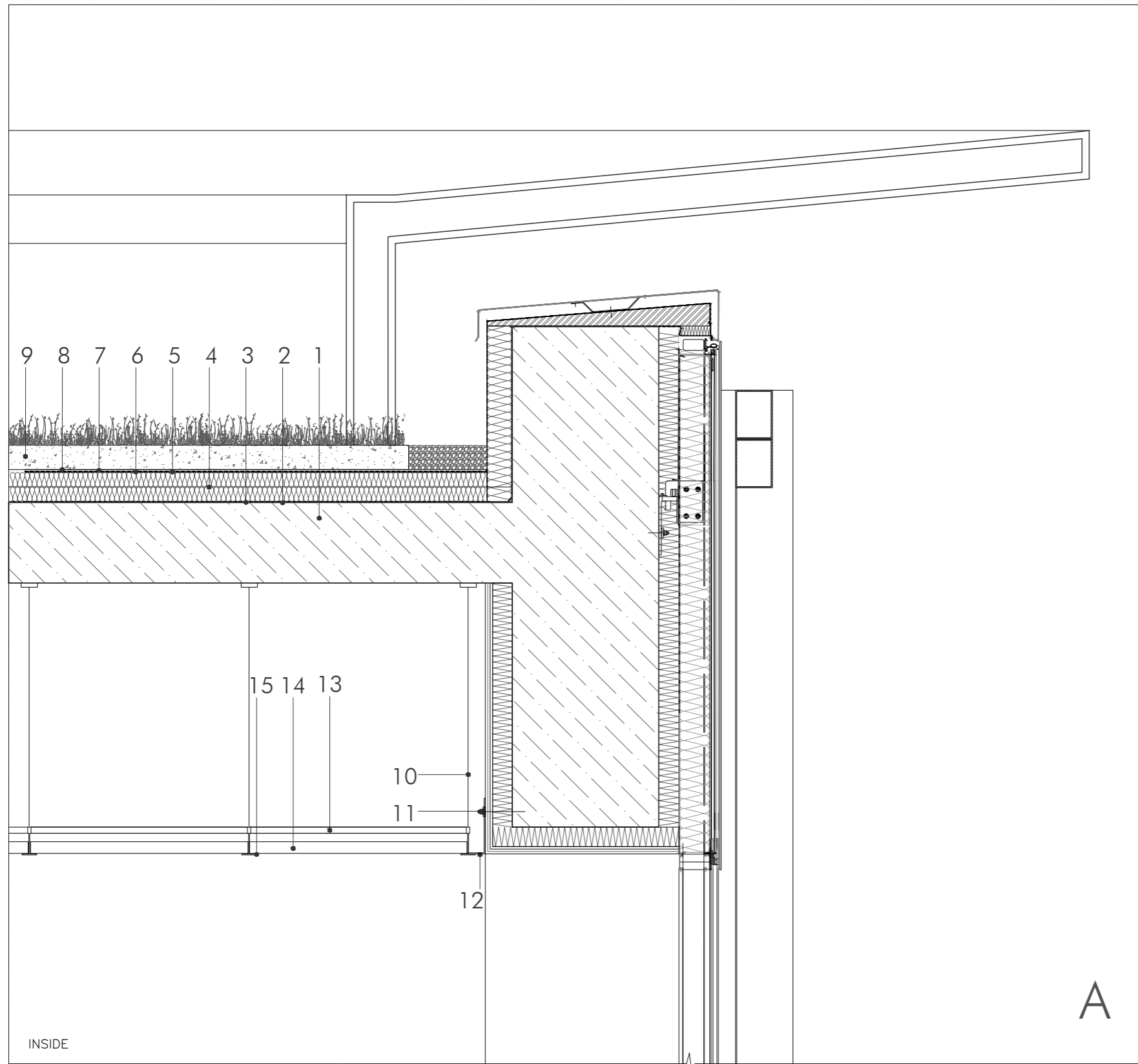


CHEMISTRY BUILDING | PARTIAL N- ELEVATION



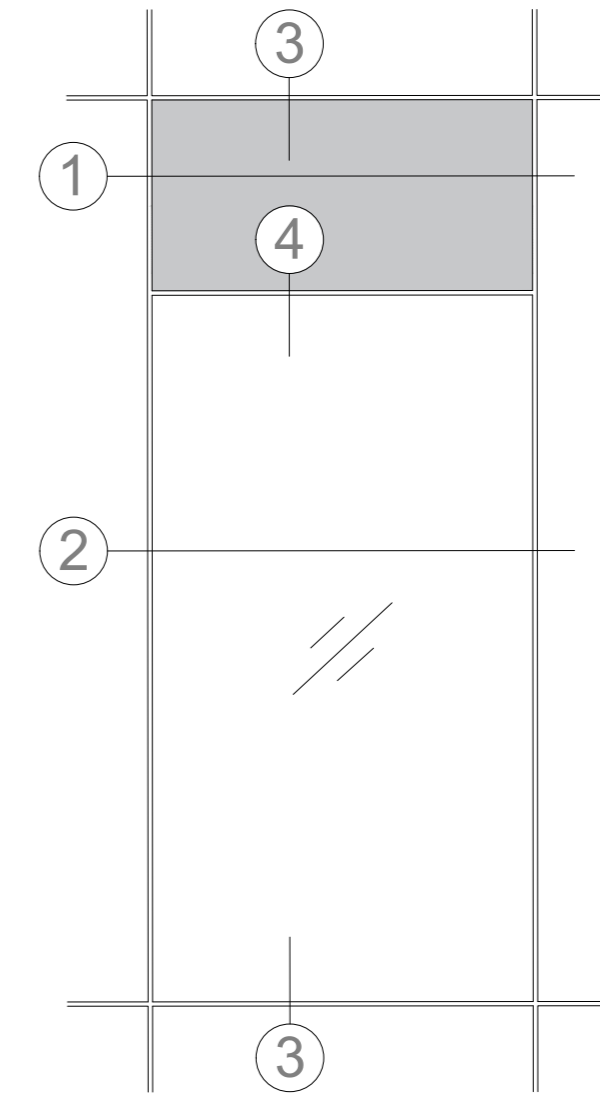
0m 1m 2m 5m 10m



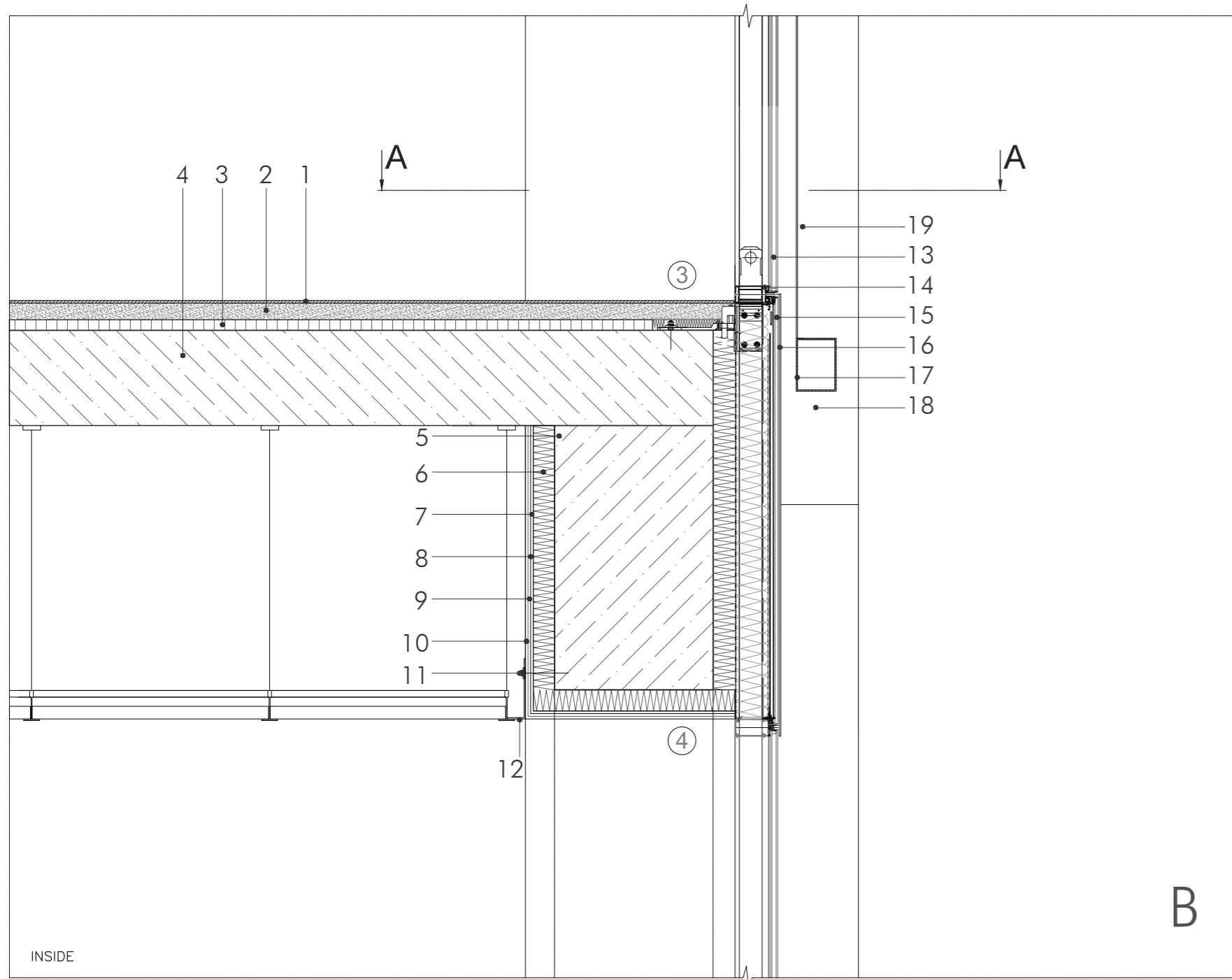


DETAIL A - Green Roof Envelope

- 1 RC slab 330 mm
- 2 Splast primer 1 mm
- 3 Preflex - Elastomer bitumen membrane 4 mm
- 4 Rock mineral wool insulation 120 mm
- 5 Water proofing membrane 4 mm
- 6 Root barrier 1 mm
- 7 Drainage Layer 7 mm
- 8 Filter Layer 1,1 mm
- 9 Growing substrate 100 mm
- 10 Vernier suspension
- 11 Drilling screw
- 12 Ceiling wall angle 19*24*4 mm
- 13 Post cap profile
- 14 Ceiling panel
- 15 Partition connection profile



- ① DETAIL A - A
- ② DETAIL A - A
- ③ DETAIL B
- ④ DETAIL B



DETAIL B - Floor Envelope

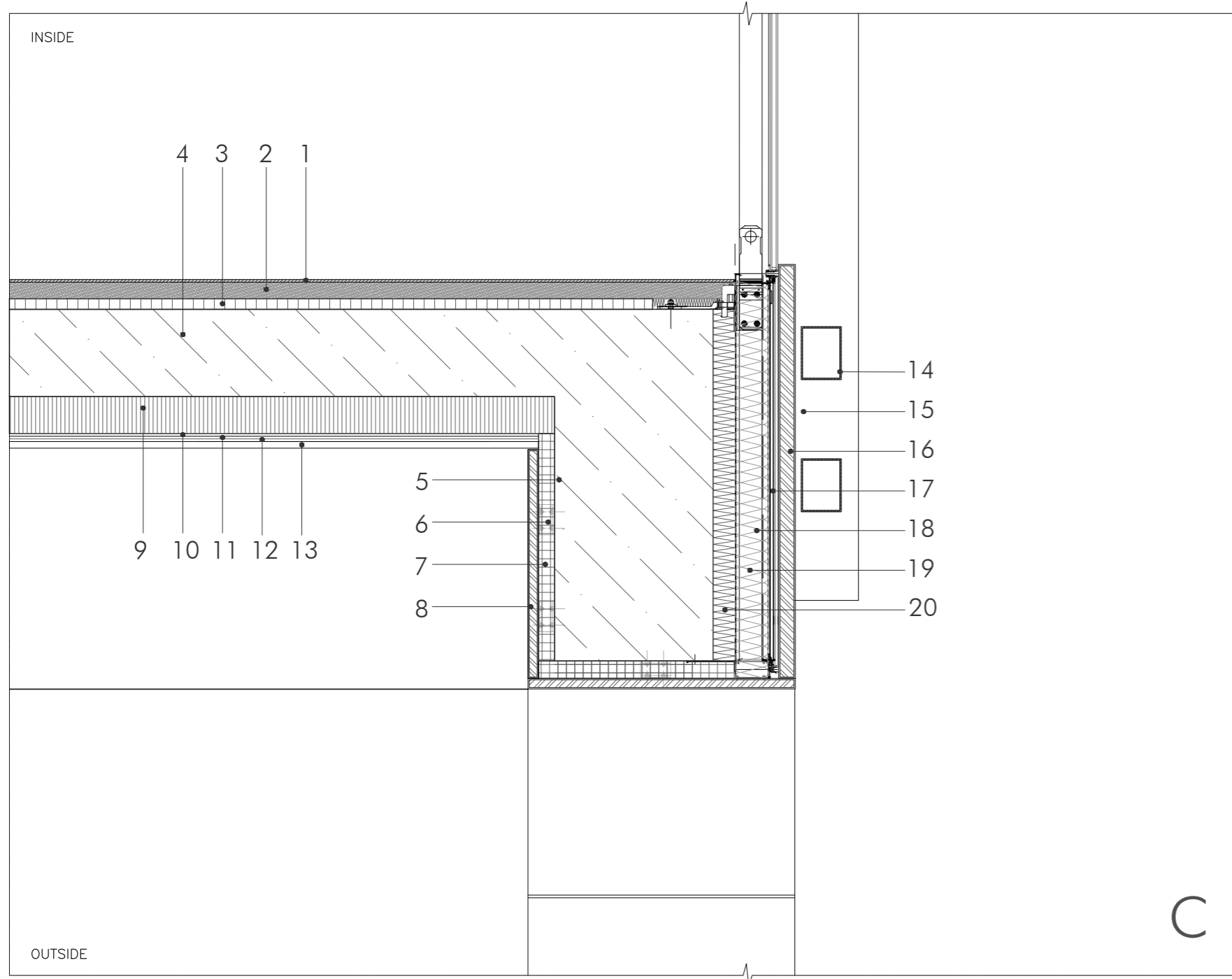
- 1 2 component epoxy resin coating
- 2 Cement screed 80mm
- 3 Impact sound thermal insulation 40mm
- 4 Reinforced concrete slab 330 mm
- 5 Precast RC beam 600*1000 mm
- 6 XPS Insulation 100 mm (applied with Forsafoam XPS glue)
- 7 Base coat 10mm
- 8 Reinforcing mesh
- 9 Base coat 10 mm
- 10 Stucco (primer and finish) 10 mm
- 11 Drilling screw
- 12 Ceiling wall angle 19*24*4 mm
- 13 ACG glass 28 mm
- 14 Horizontal mullion
- 15 Spandrel panel
- 16 Horizontal aluminium plate 6 mm
- 17 Horizontal aluminium profile 200*150 mm
- 18 Vertical aluminium profile 300*200 mm
- 19 Aluminium shading panel 5 mm



**SCHÜCO FACADE
UCC 65 SG**

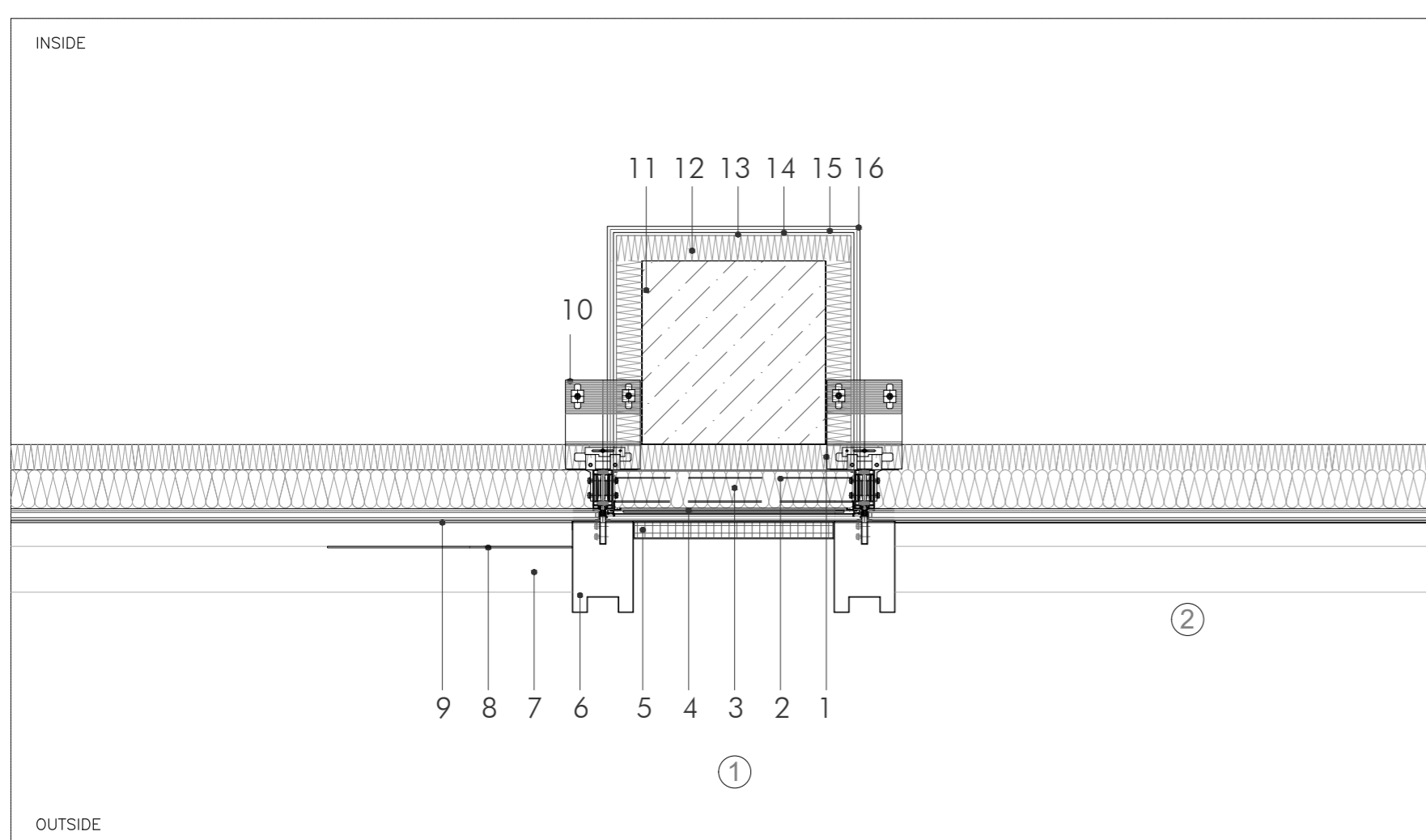
TECHNICAL INFORMATION

U value of frame : 2,2 W/(m²K)
Material : Aluminium
Max height: 3600 mm
Max. width 2700 mm
Max weight: 250 kg
Max. glass thickness : 36 mm
EPD Recyclable



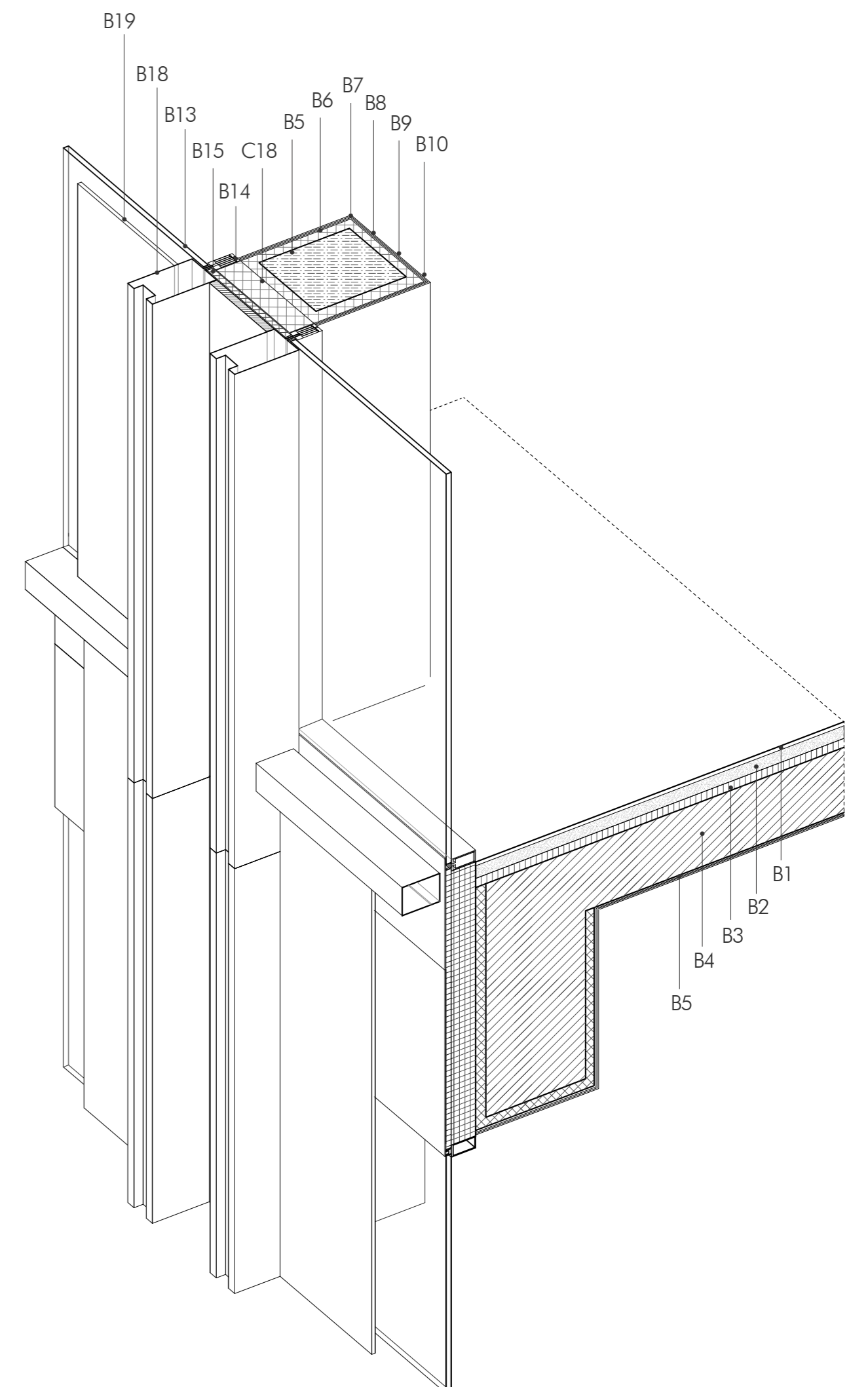
DETAIL C - Facade Envelope Envelope

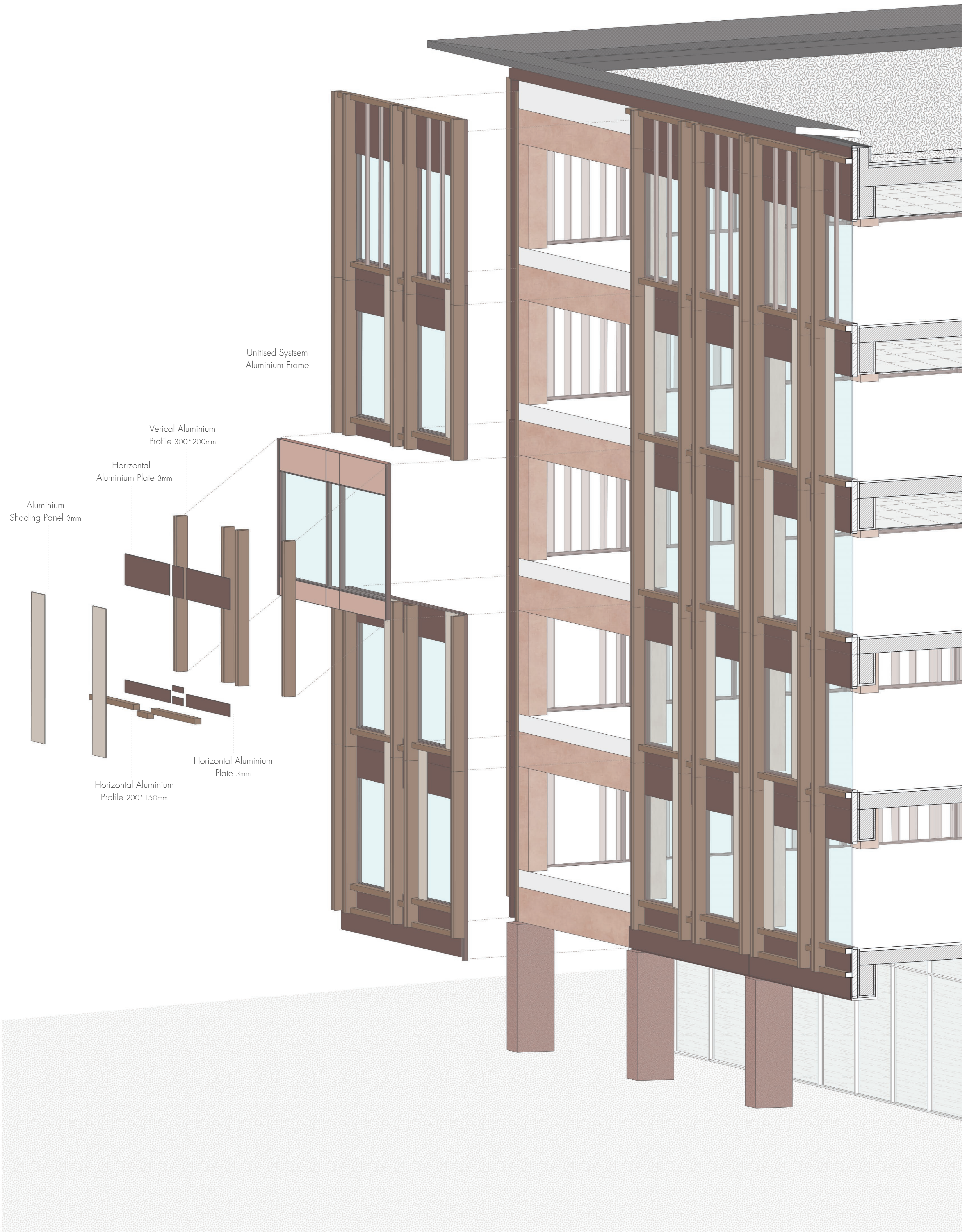
- 1 2 component epoxy resin coating
- 2 Cement screed 80mm
- 3 Impact sound thermal insulation 40mm
- 4 Reinforced concrete slab 330 mm
- 5 Precast RC beam 600*1000 mm
- 6 Support bracket
- 7 XPS Insulation 100 mm
- 8 Alucoband aluminium sandwich panel 0,5 mm aluminium , Mineral filled core with polymer adhesives
- 9 XPS Insulation 60 mm 2 layer (applied with Forsafoam XPS glue)
- 10 Base coat 10mm
- 11 Reinforcing mesh
- 12 Base coat 10 mm
- 13 Stucco (primer and finish) 10 mm
- 14 Horizontal aluminium profile 200*150 mm
- 15 Vertical aluminium profile 300*200 mm
- 16 Alucoband aluminium composite panel 0,5 mm aluminium , Mineral filled core with polymer adhesives
- 17 Opaque spandrel panel
- 18 XPS Insulation 120 mm
- 19 Horizontal mullion
- 20 XPS Insulation 100 mm



DETAIL A-A - Facade Envelope Plan

- 1 XPS Insulation 100 mm
- 2 Horizontal mullion
- 3 XPS Insulation 120 mm
- 4 Opaque spandrel panel
- 5 Aluminium composite panel 60 mm
- 6 Vertical aluminium profile 300*200 mm
- 7 Horizontal aluminium profile 200*150 mm
- 8 Aluminium shading panel 5 mm
- 9 Aluminium plate 6 mm
- 10 Gravity bracket
- 11 RC Column 600*600 mm
- 12 XPS Insulation 100 mm (applied with Forsafoam XPS glue)
- 13 Base coat 10mm
- 14 Reinforcing mesh
- 15 Base coat 10 mm
- 16 Stucco (primer and finish) 10 mm





Unitised System
Aluminium Frame

Verical Aluminium
Profile 300*200mm

Horizontal
Aluminium Plate 3mm

Aluminium
Shading Panel 3mm

Horizontal Aluminium
Plate 3mm

Horizontal Aluminium
Profile 200*150mm