

A TURNING POINT

CRITICAL DEVICE FOR THE STARTING POINT

AN IMPEDIMENT THAT STARTS

Reaching the new footbridge, one immediately notices a peculiar element. Although every barrier between the road and the archaeological park appears to have disappeared, a single wall with a large bench in front of it comes into view. And it almost seems to be a contradictory point. An imposed limit. Approaching it, one can immediately allow oneself to experience that seat as one sees fit. Wide enough to even lie there for a while or to accommodate as many people as possible. The beginning of reflection and questions, or the end of the path.

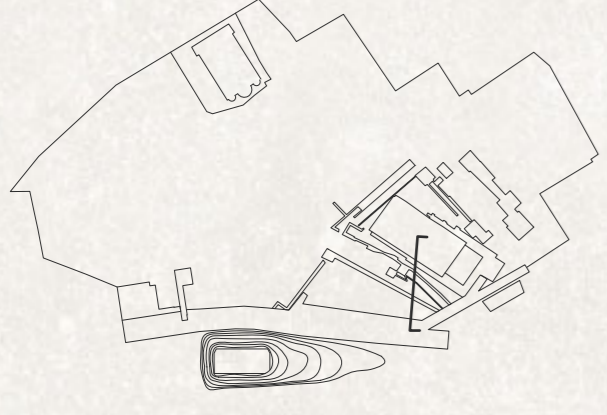
Everything else seems endless, as if one could run as far as the past, except for one point.

The parapet prohibits and denies continuation and contact. It creates distances. How can a normatively imposed element have any value?

It is just a little wall.

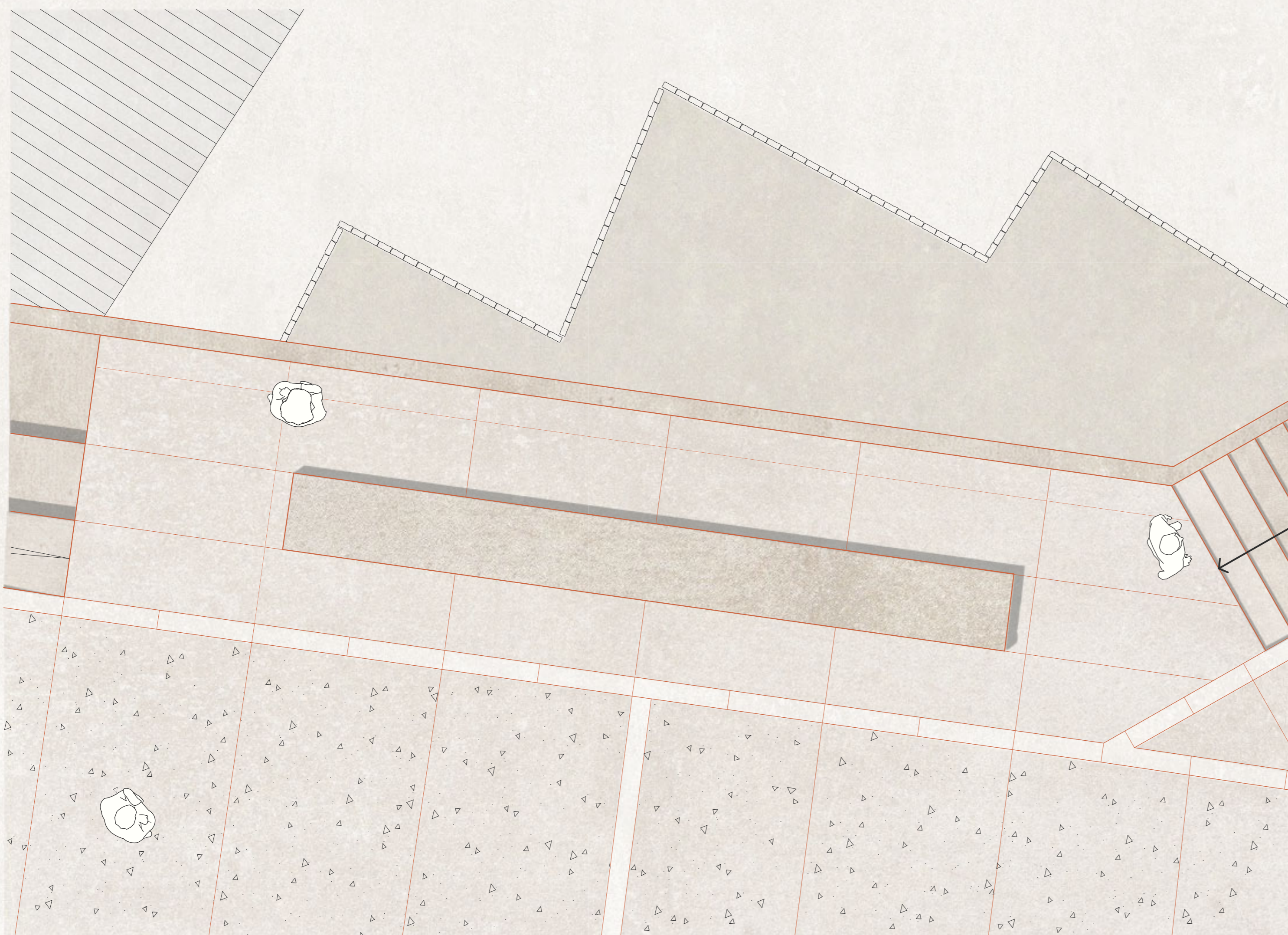
One stops, a long sitting point invites reflection.

Where to go? How to go on? And why do we still have to stay so far from the past?

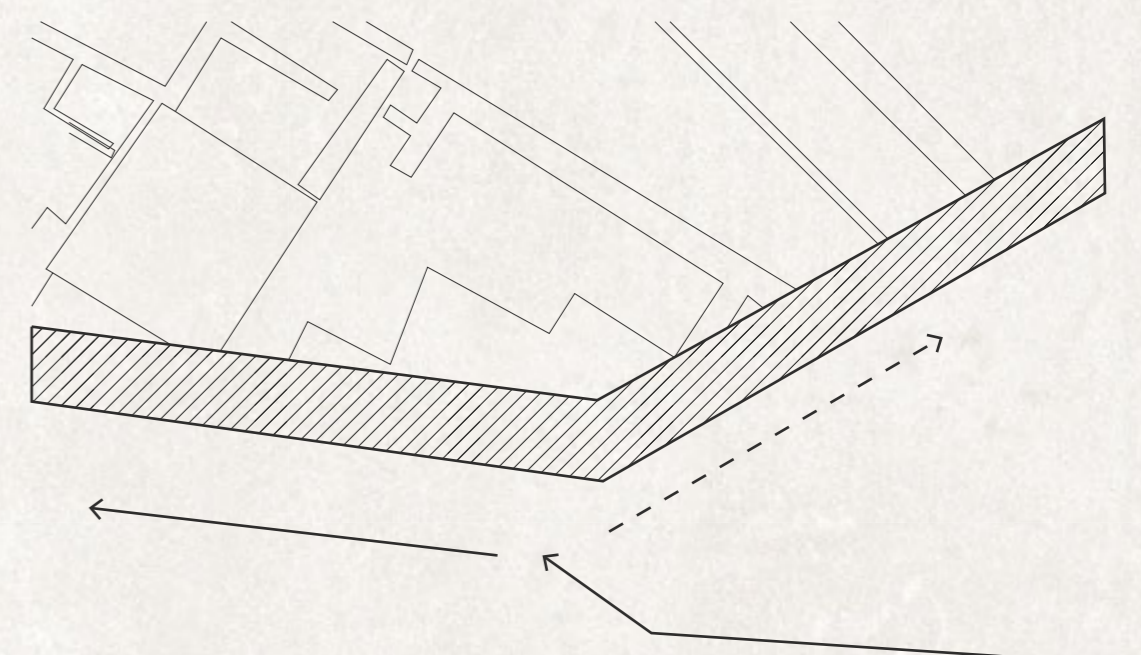


SECTION 1:100

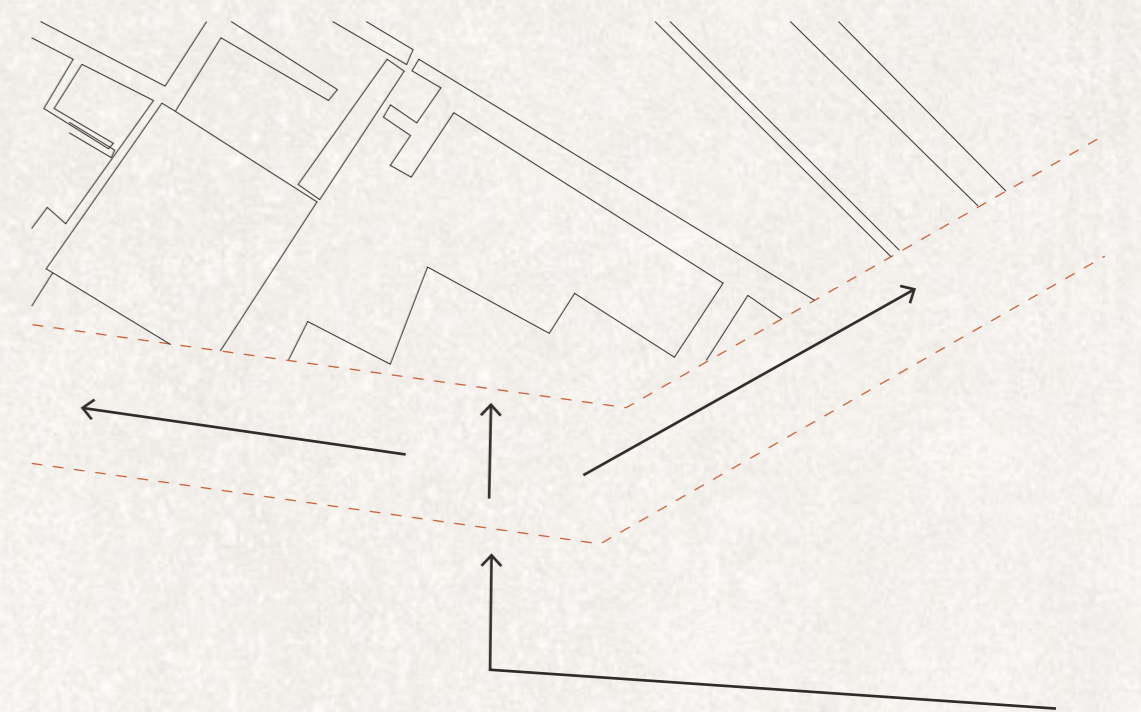
PLAN 1:50



COMPARISON DE FACTO - PROJECT STATUS



lack of contact with the rest and poor visual appreciation. The road to the north-east appears secondary and little used.



opening of the field of vision and moment of choice. The proposed routes allow different experiences for a greater appreciation and understanding of the remains.