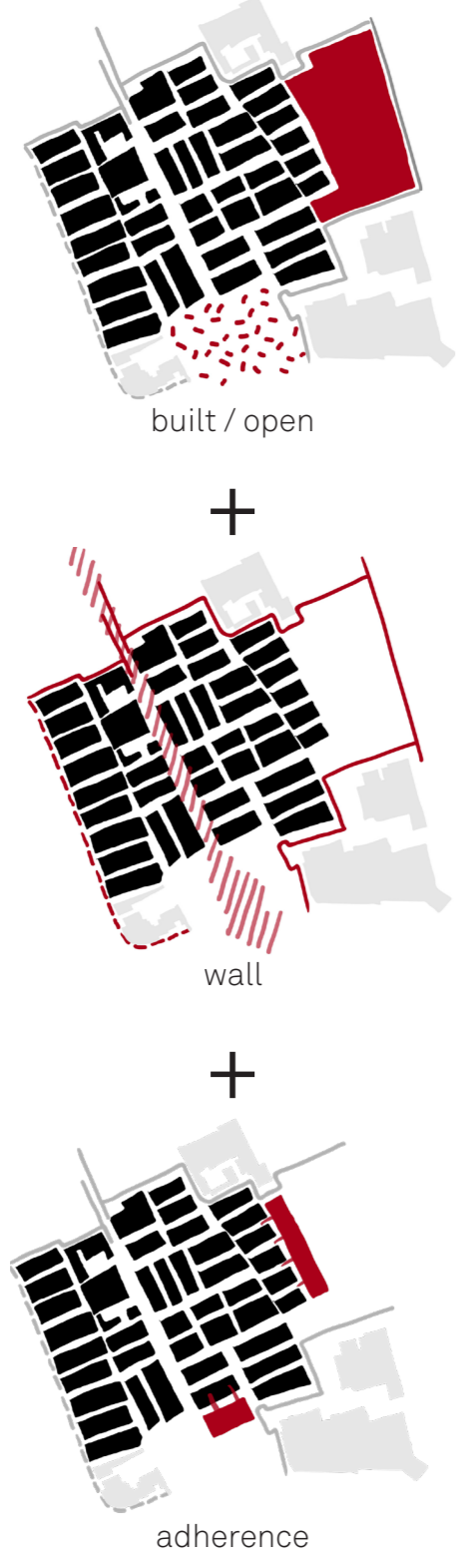
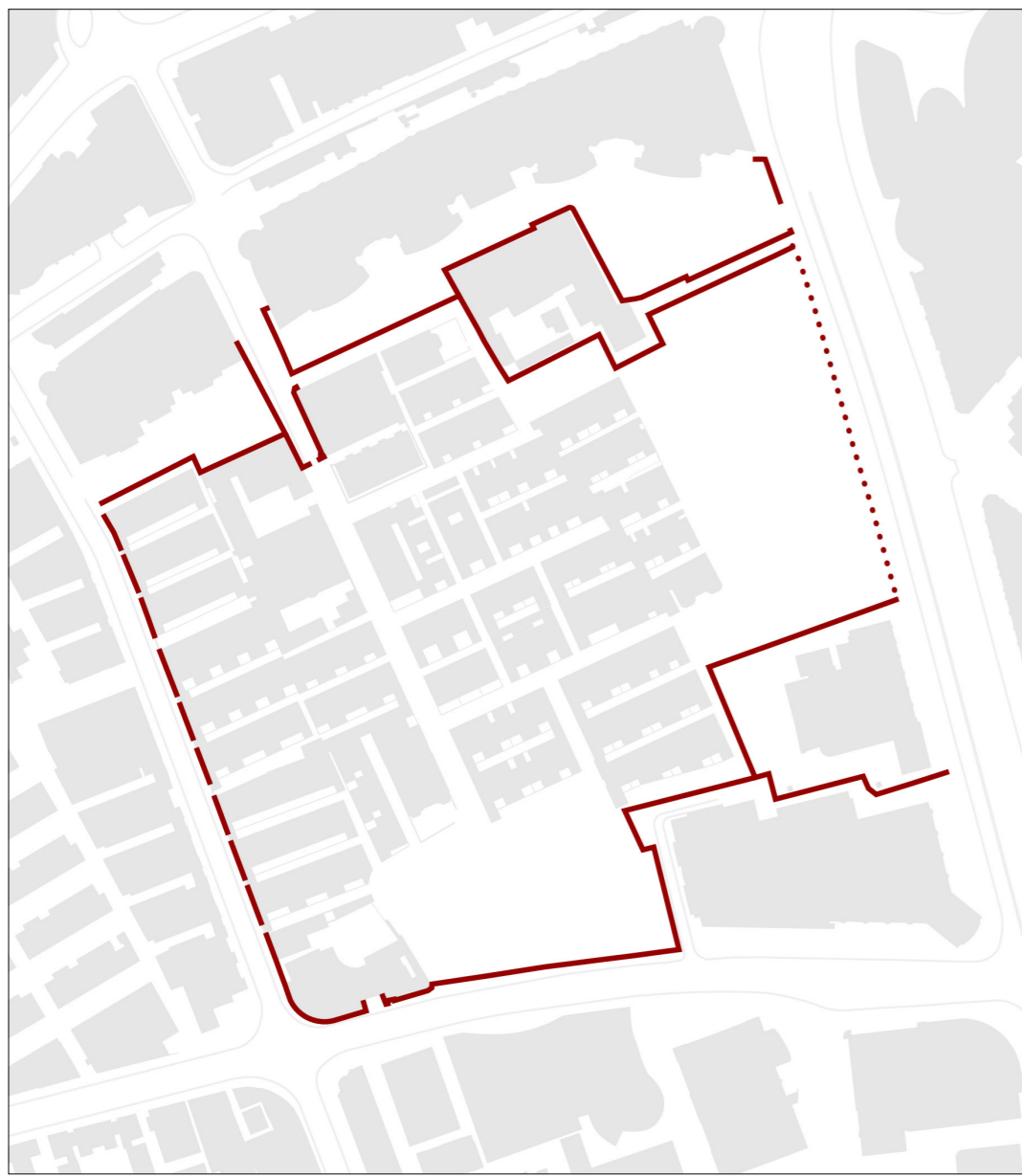


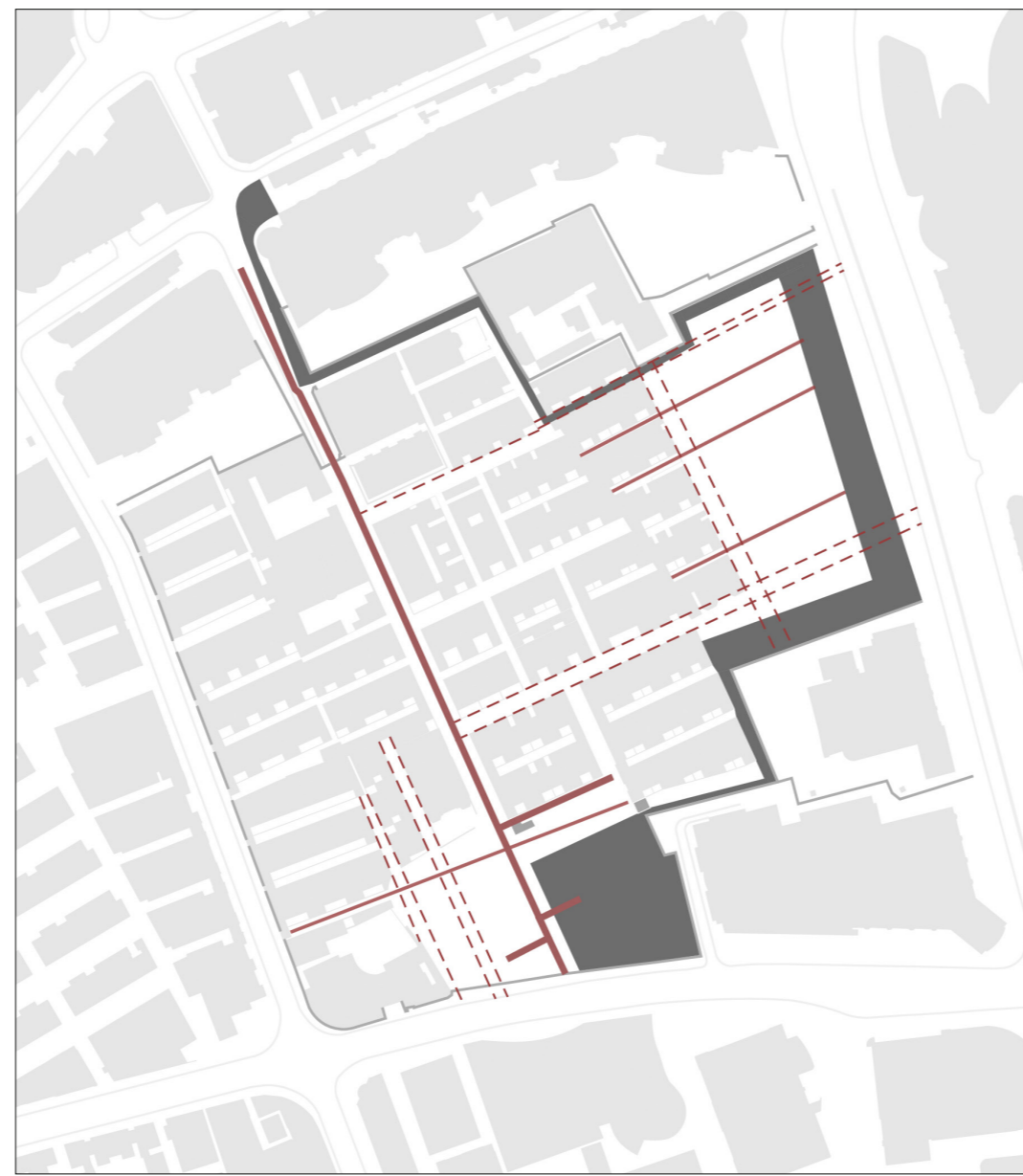
- Main and secondary *alleyways*: circulation hierarchy of the Lilong's system maintained
- Public and private *open spaces*: Shikumen's courtyards and community's open spaces
- Existing physical *barriers and walls*: they are interposed between the Lilong and the out-scaled context
- ▶ *Driveway access*
- ▶ *Pedestrian access*
- Lilong's perimeter defined by a *permeable wall* on the western side with the former small retail row's facade towards the public street; to the East and South the facades are missing because of the demolition of the Shikumen



- Built volumes - the walkway
- Open area
- Relationship with existing Shikumen
- Shikumen
- Context buildings



1. Starting point: the existing wall enclosing the Zhongyuan Lilong.



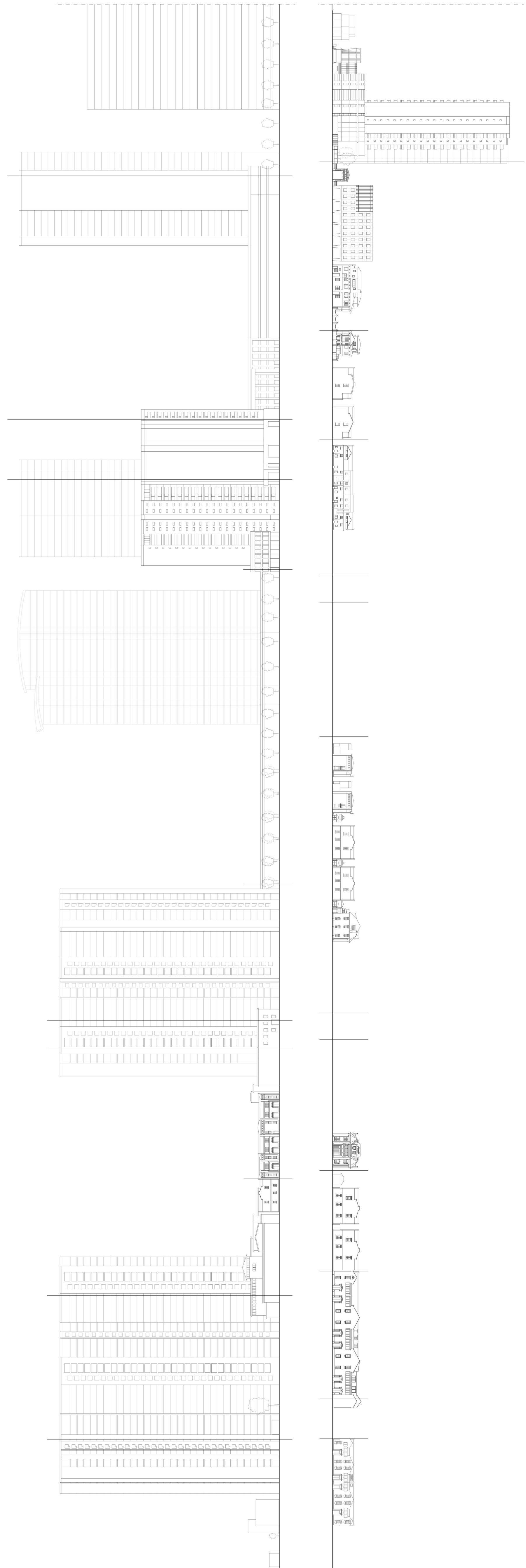
2. The existing wall develops into a path, its different depths are intended to accommodate different functions in different volumes and spaces.



3. The path is intersectioned by different volumes that make its boundaries more indented and permeable. Open public spaces in the southern lot take shape according to the preexistences and the new needs.



4. The southern roofed open square is conceived as the ending step of the path, it responds to the theme of adherence with the preexistence. The path fills and re-link the gap between the inside and the outside context of the Lilong.



Elevation along the wall towards the **OUTSIDE** of the Lilong scale 1 : 1,000

Elevation along the wall towards the **INSIDE** of the Lilong scale 1 : 1,000

The two elevations emphasize the deeply different realities coexisting in the urban context around Zhongyuan Lilong. Along the wall in which consists its perimeter, the elevation towards the exterior unveils the out-scaled buildings around, while the one towards the interior of the Lilong clearly shows the dimension of the Shikumen and their more man-scaled nature.