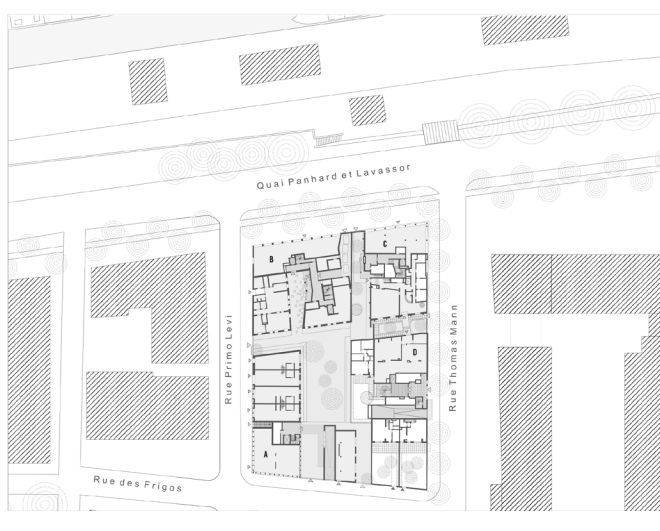


Transitioning urbanities



GF

Quartier Massena
Christian de Potzamparc
 Paris, 1995-2012

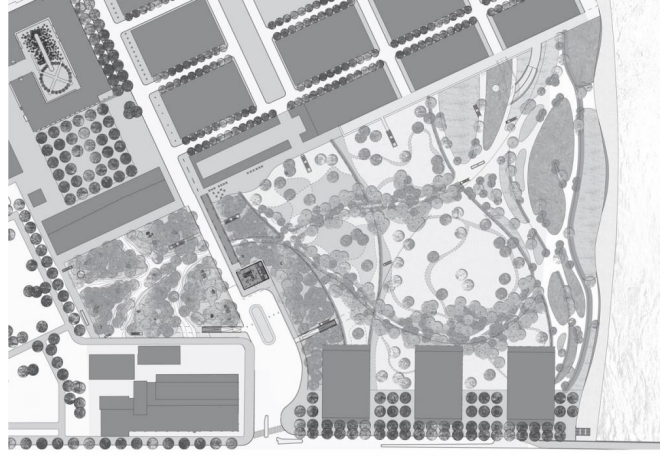
development rules
transitional
randomization



GF

Novartis Campus Green
Vogt Landscape Architects
 Basel, 2006-2016

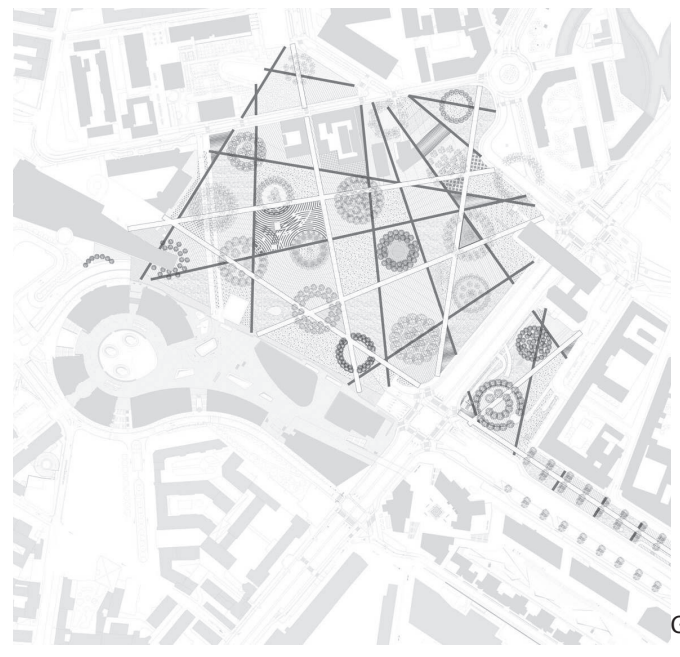
karst
mimesis
buffer



GF

Novartis Campus Park
Vogt Landscape Architects
 Basel, 2006-2010

terraced landscape
stage for nature
mediating

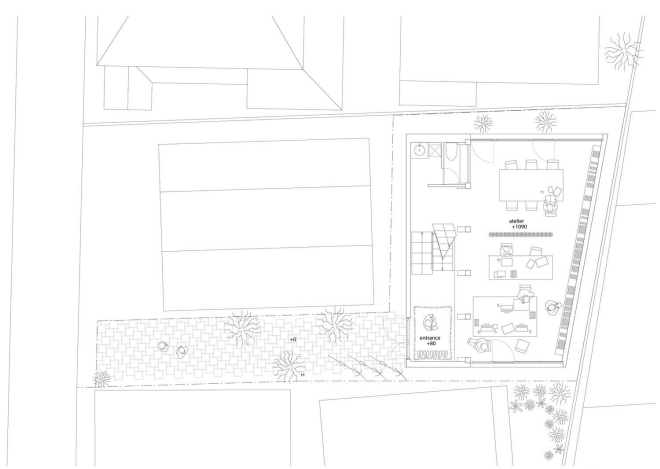


GF

Biblioteca degli alberi
Studio Giorgetta et al.
 Milano, 2003-2018

incisions
gathering circles
local flora

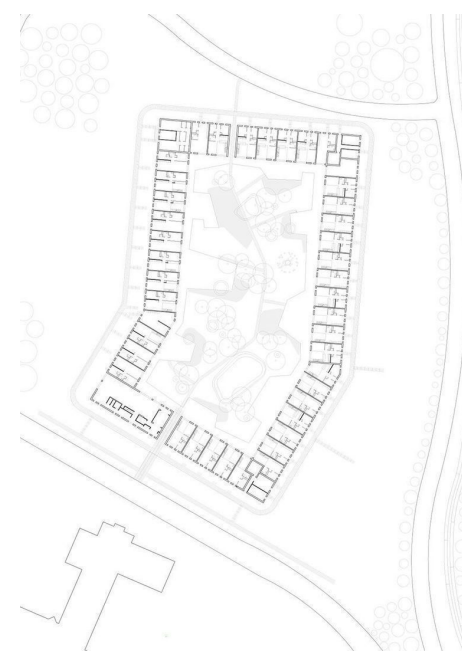
Integrating nature with living space



1F

House and Atelier
Atelier Bow Wow
 Shinjuku, 2005

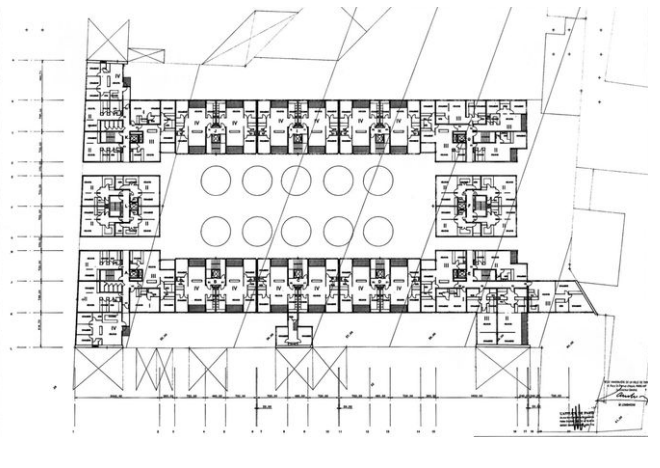
void metabolism
flagpole site
intermediarity



GF

Lange Eng Cohousing
Dorte Mandrup
 Copenhagen, 2008

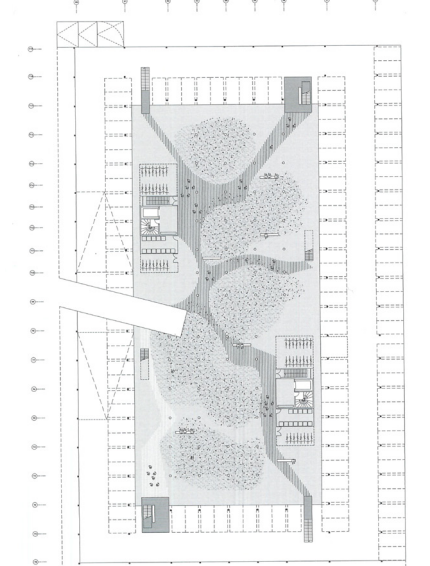
introverted
collaborative
direct access



GF

Square des bouleaux
M. Desvigne, R. Piano, C. Dalnoky
 Paris, 1992

introverted
submersion
incisions

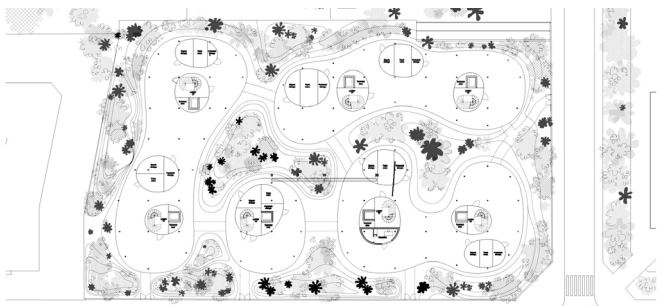


GF

Super L
Bruther
 Eysines, 2013

winter garden
introverted
communal spaces

Mediating between living and urban space



GF

Apartments on Ave. Maréchal Fayolle
SANAA
 Paris, 2018

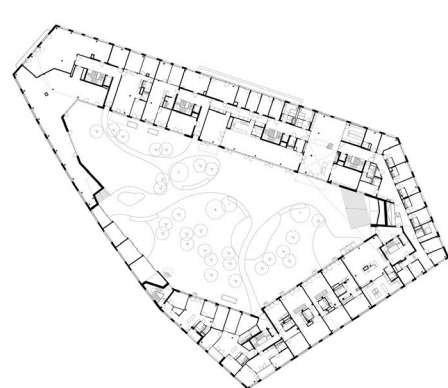
perimeter
cover
fluidity



GF

Coop Housing
fatkoehi, BAR and Carpaneto Architekten
 Berlin, 2011-2013

intermediaries
public extension
flexible



2F

Kalkbreite
Muller Sigrist Architekten
 Zurich, 2007-2014

intermediary space
facilities
dispersion



1F

La Borda
Lacol Arquitectura Cooperation
 Barcelona, 2018

cooperative
introverted
blurred boundary

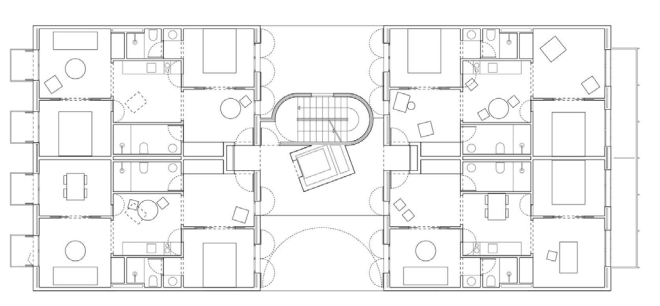


1F

Carré Lumière
LAN Architecture
 Bègles, 2015

weather adaptable
incisions
flexible

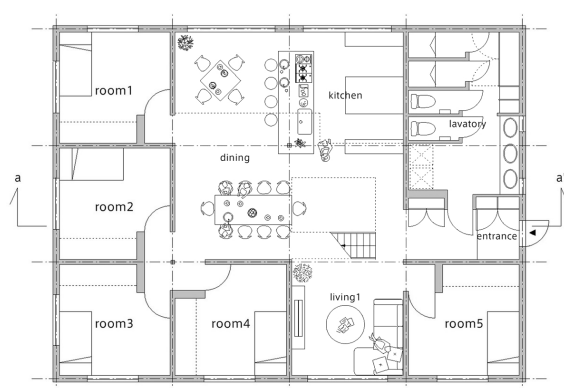
Revising spatial distribution and articulation



1F

22 Dwellings Housing
MAIO
 Barcelona, 2013-2016

fixed core
corridor reduction
flexible



GF

LT Josai Shared House
Naruse Inokuma Architects
 Nagoya, 2013

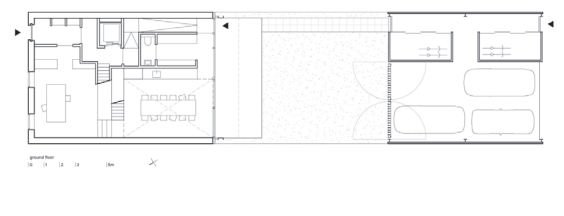
variety
individual privacy
share house



GF

Mehr als Wohnen – Haus A/Die Innenstadt
Duplex Architekten
 Zurich, 2009-2015

meandering
informal
individual privacy



GF

Three generation house
BETA office for architecture and the city
 Amsterdam, 2018

dividable
multi-generational
airiness

Contemporary references divided per project qualities and themes

Politecnico di Milano
 Scuola di Architettura Urbanistica Ingegneria delle Costruzioni
 M.Sc. Architecture and Urban Design

Mentor: Stamatina Kousidi
 AA 2022/23

Future housing models
 How will we live together in Skopje?

Student: Angela Petrovska
 Matricola number: 951479

Exploration of advancing architectural typologies