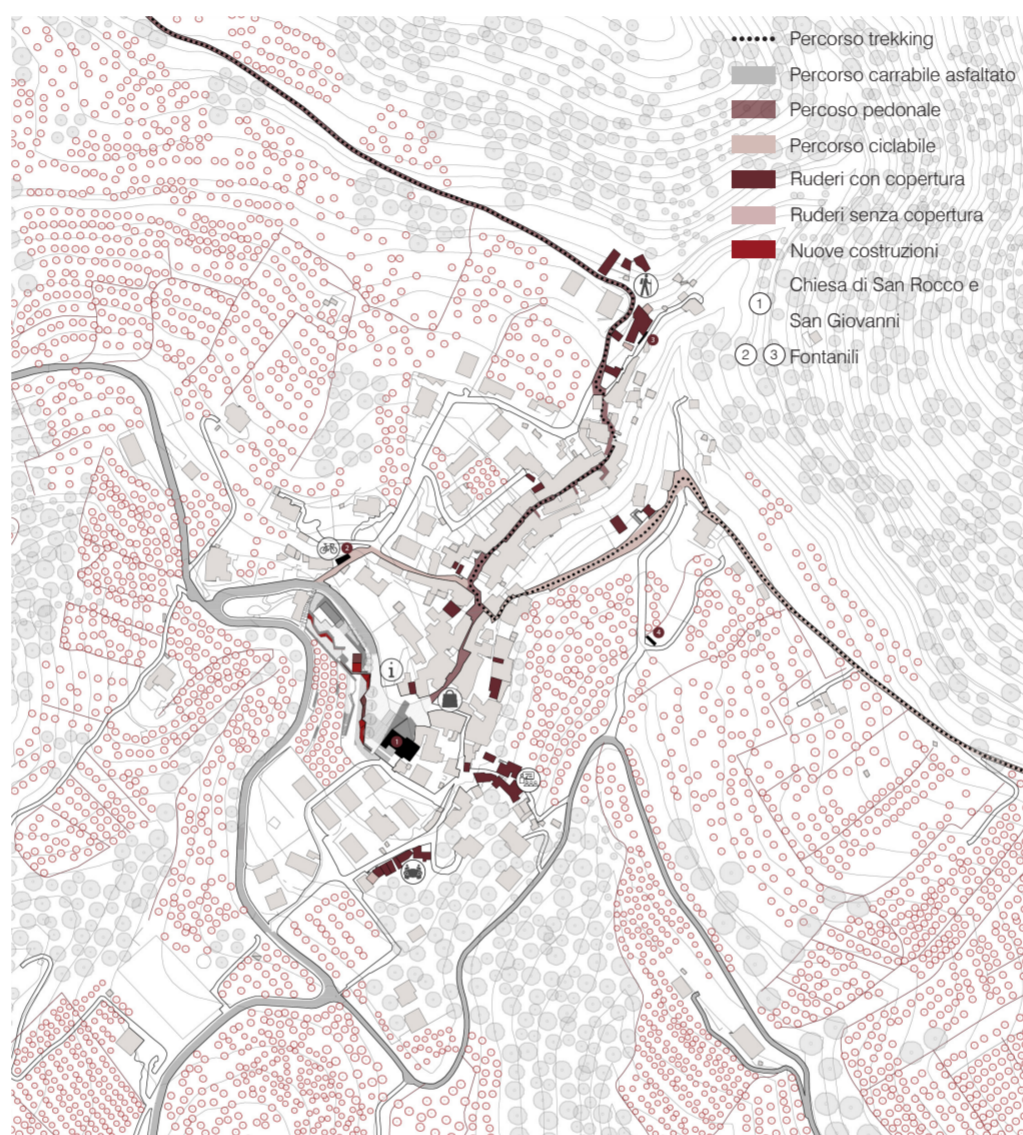
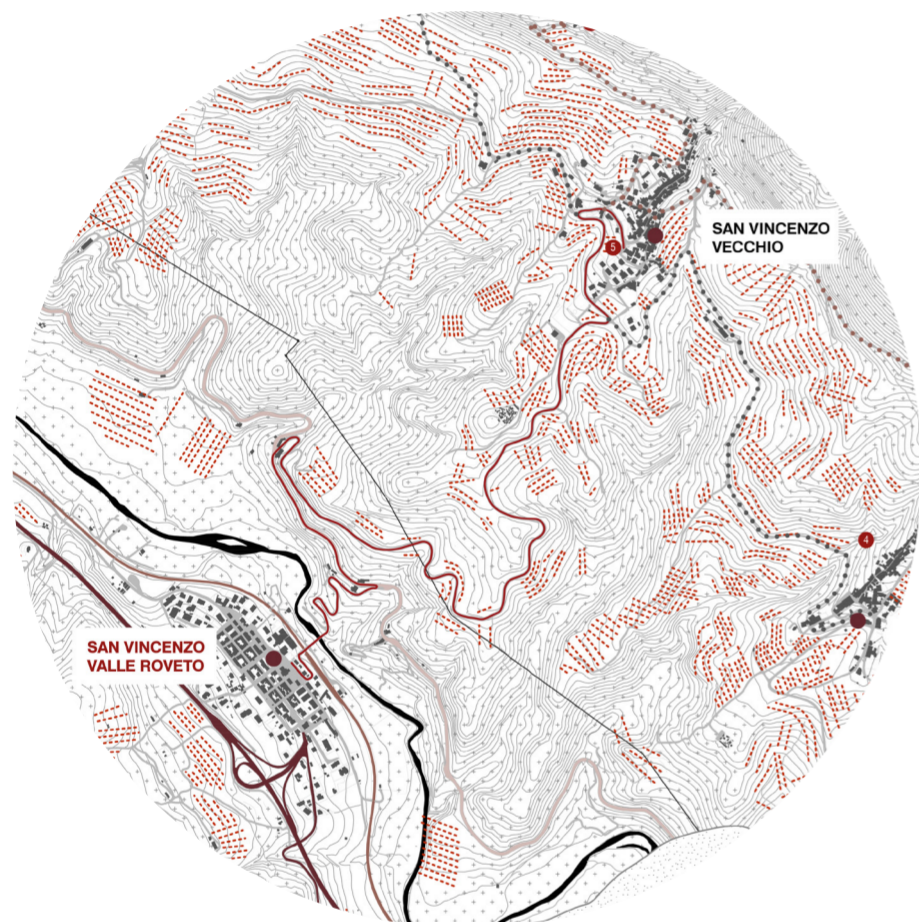
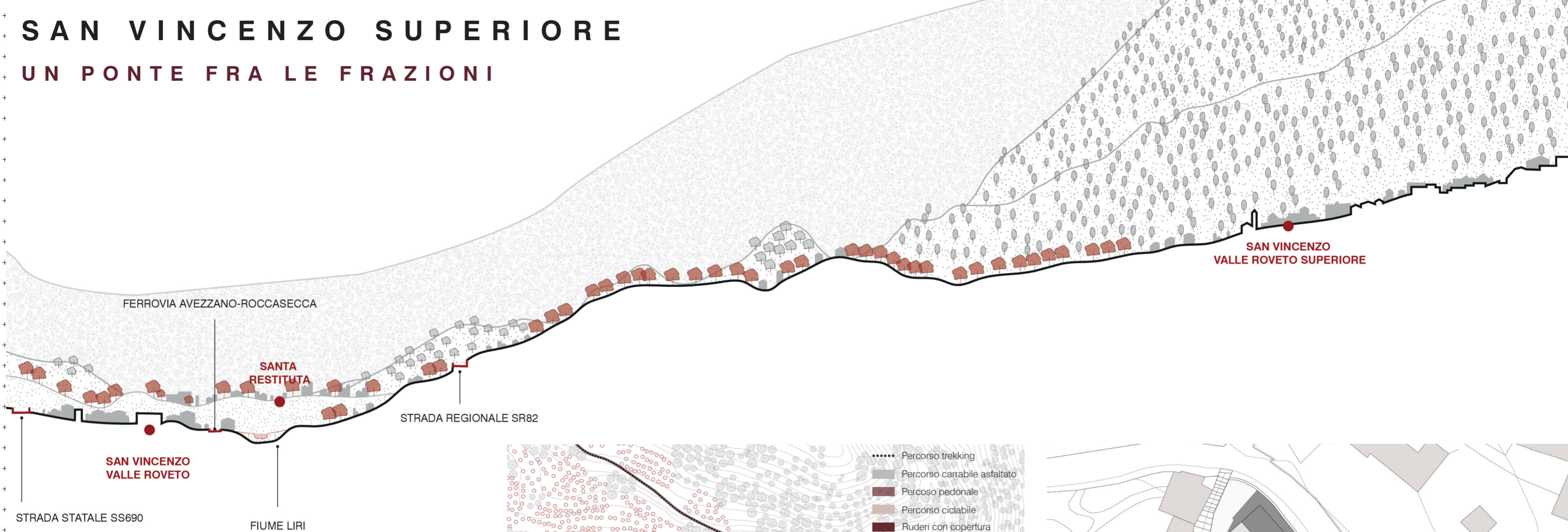


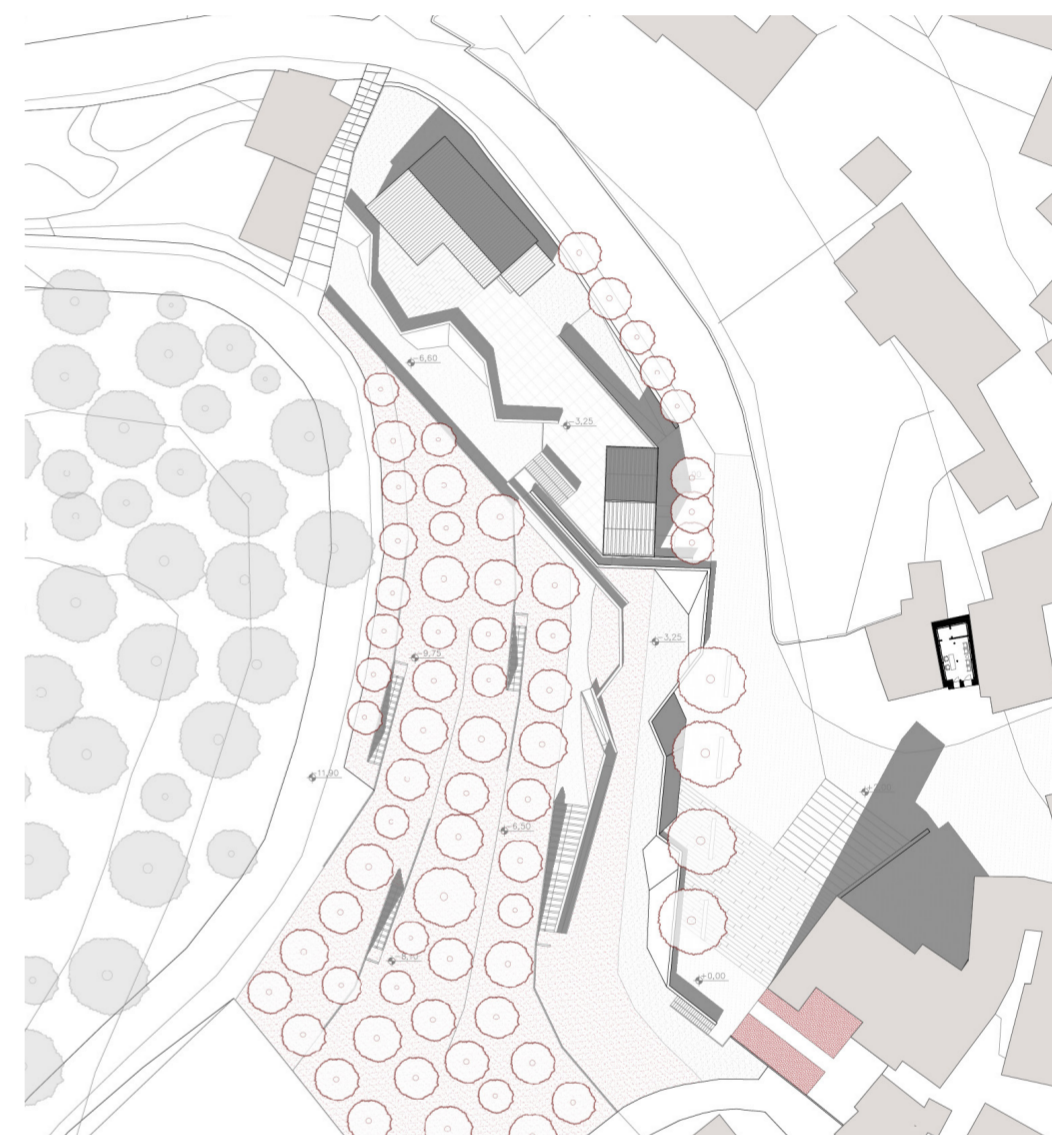
SAN VINCENZO SUPERIORE

UN PONTE FRA LE FRAZIONI

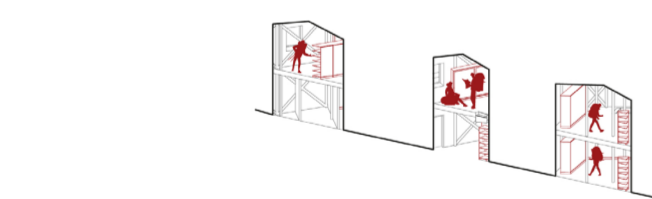
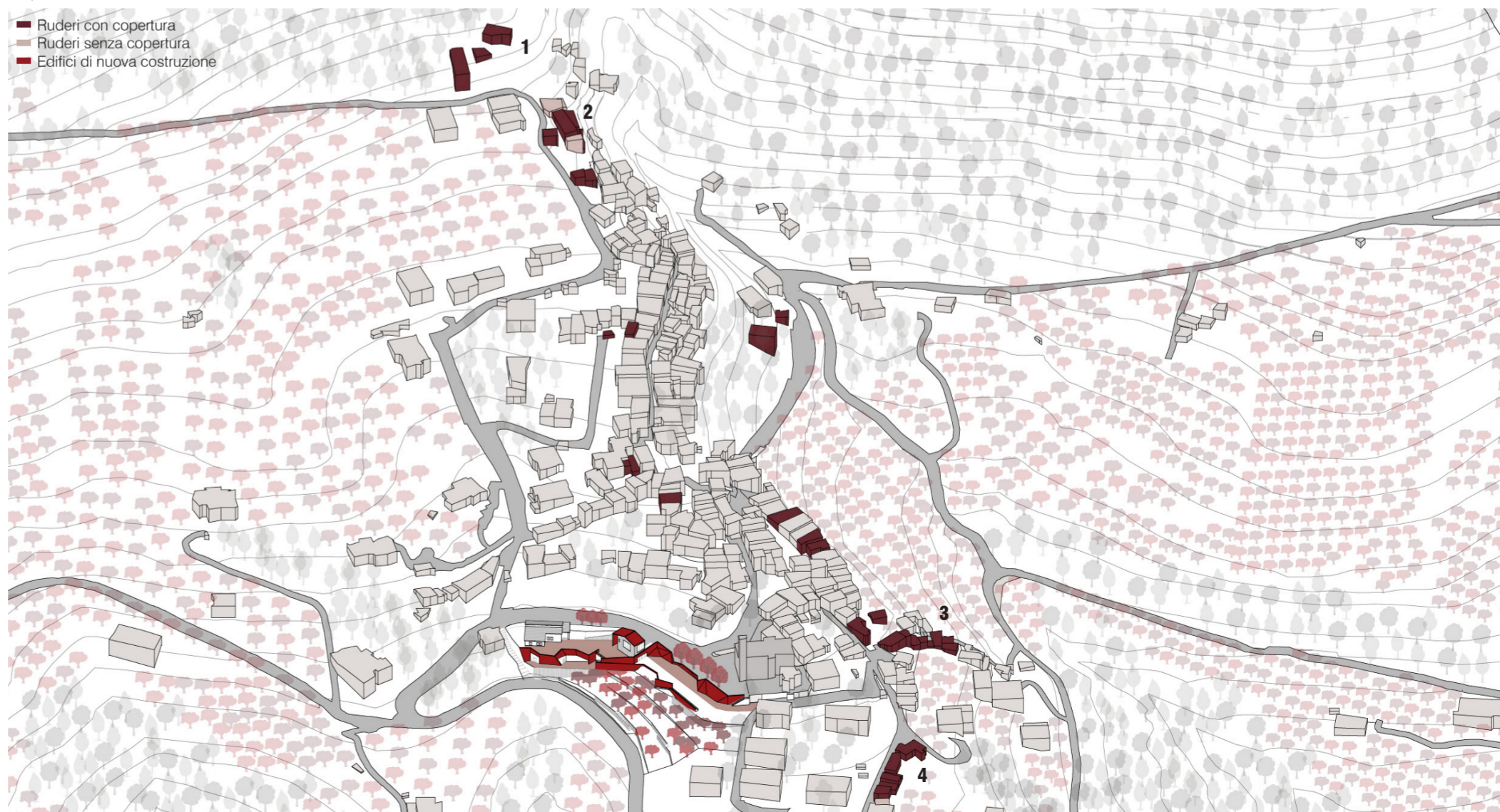
Laureandi: Francesco Airolidi, Federica Savio, Valentina Sciaraffia



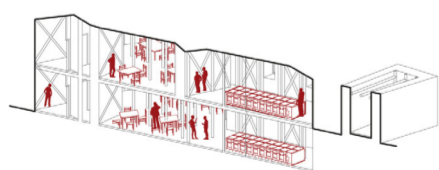
Inquadramento I Scala 1:10000



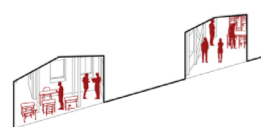
Planivolumetrico I Scala 1:1000



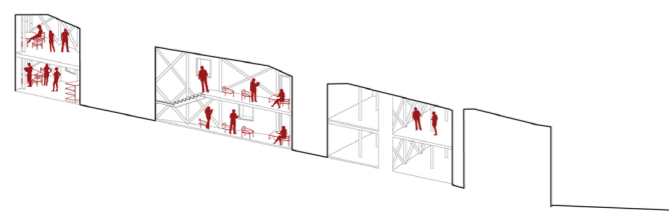
1_Deposito attrezzatura trekking



2_Ristoro

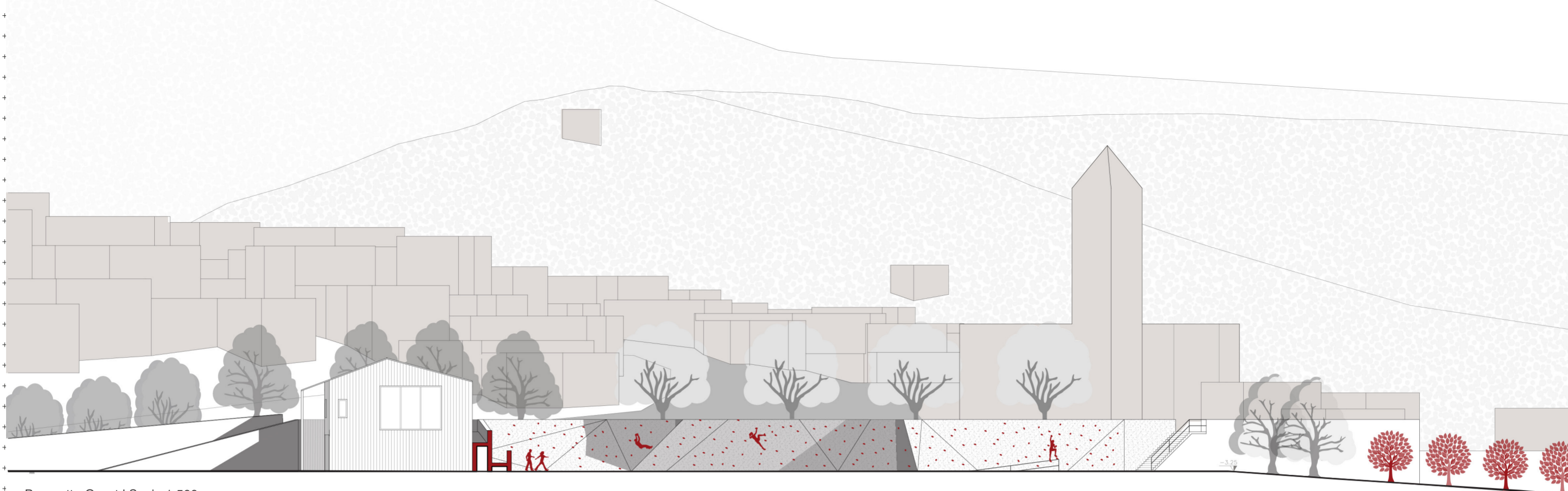


3_Aule didattiche e laboratori di lavorazione artigianale



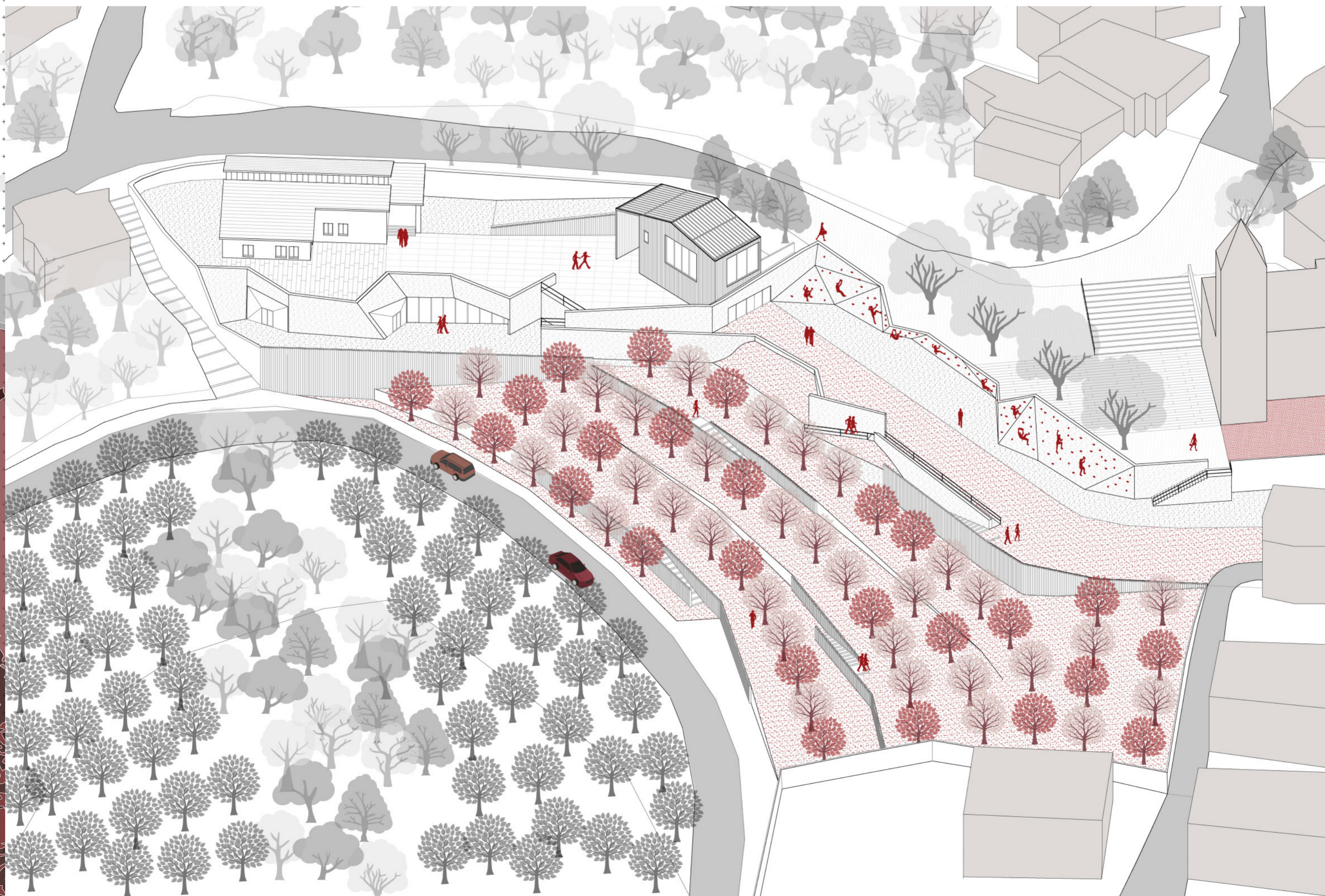
4_Sale riunioni

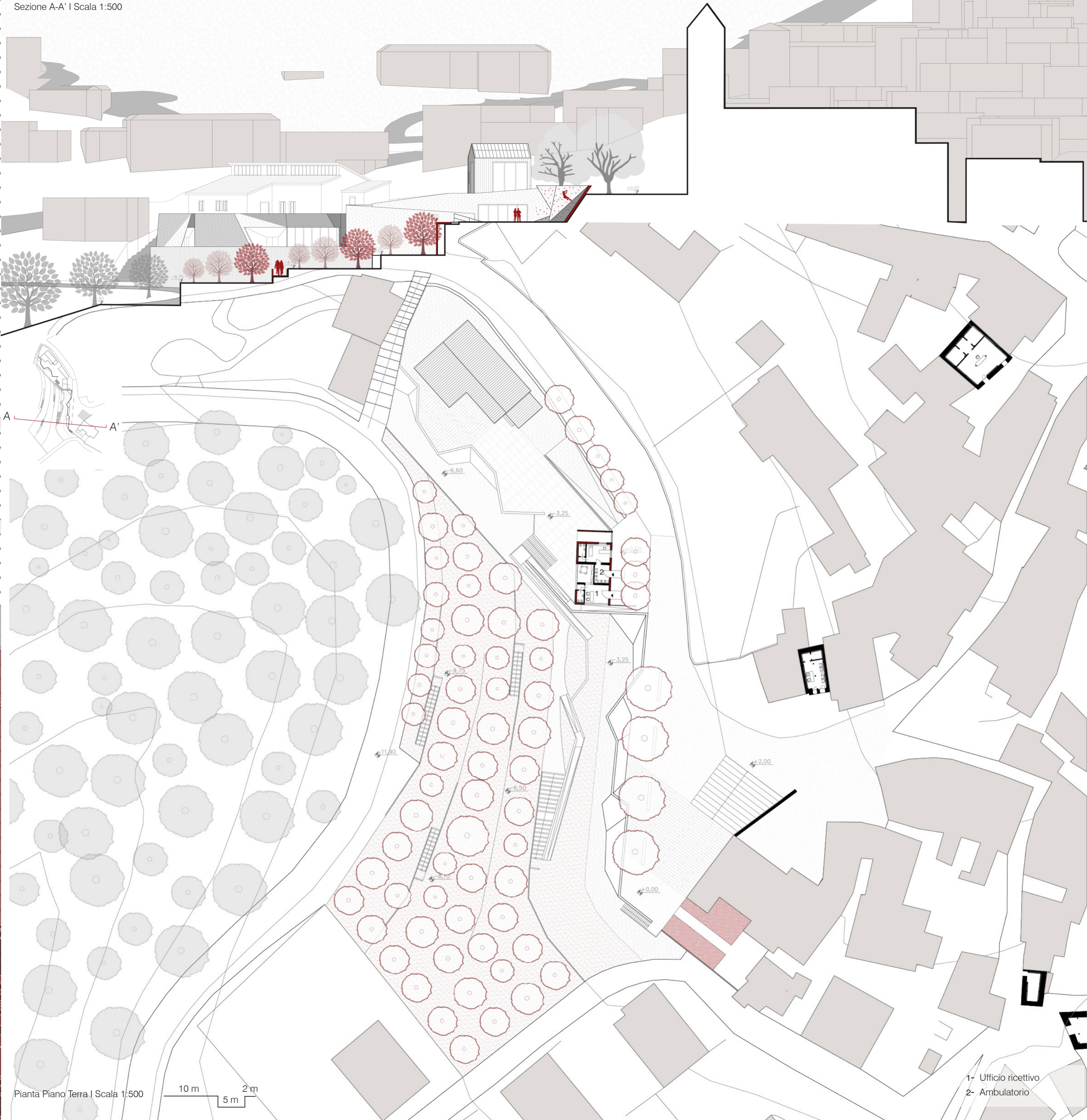
IDENTITÀ STRATEGIE PROGETTUALI PER L'AREA INTERNA VALLE ROVETO (AQ)



Prospetto Ovest | Scala 1:500

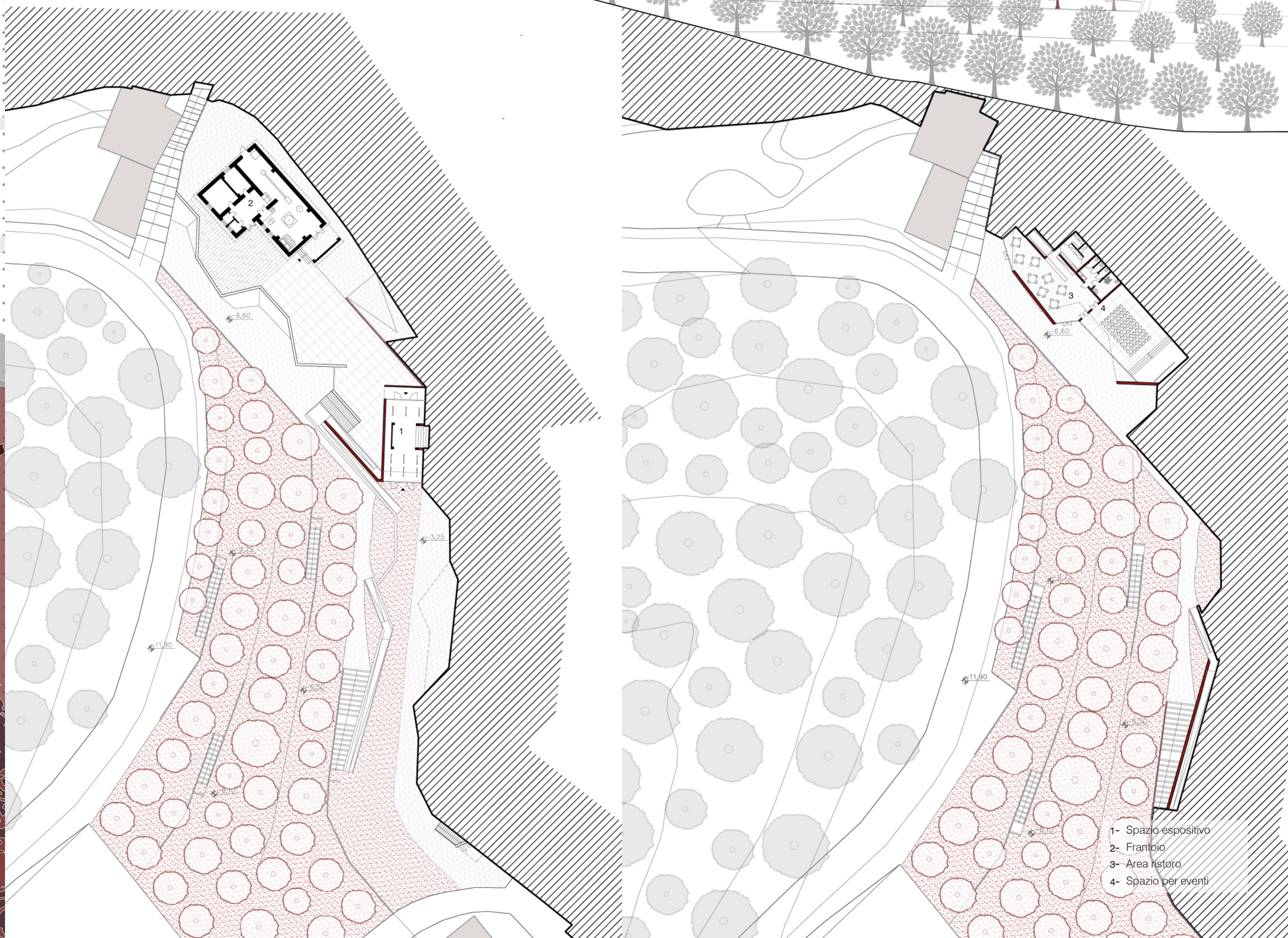
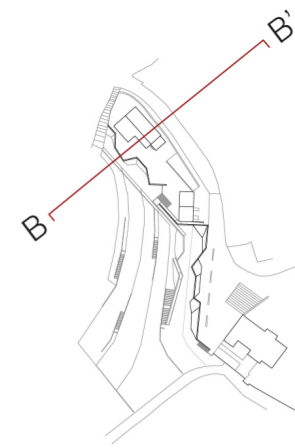
Assonometria | Scala 1:500





Sezione B-B' | Scala 1:500 (sopra)
Pianta Piano -1 | Scala 1:500 (sotto)
Pianta Piano -2 | Scala 1:500 (a lato)

10 m 5 m 2 m



- 1- Spazio espositivo
- 2- Frantoio
- 3- Area ristoro
- 4- Spazio per eventi