

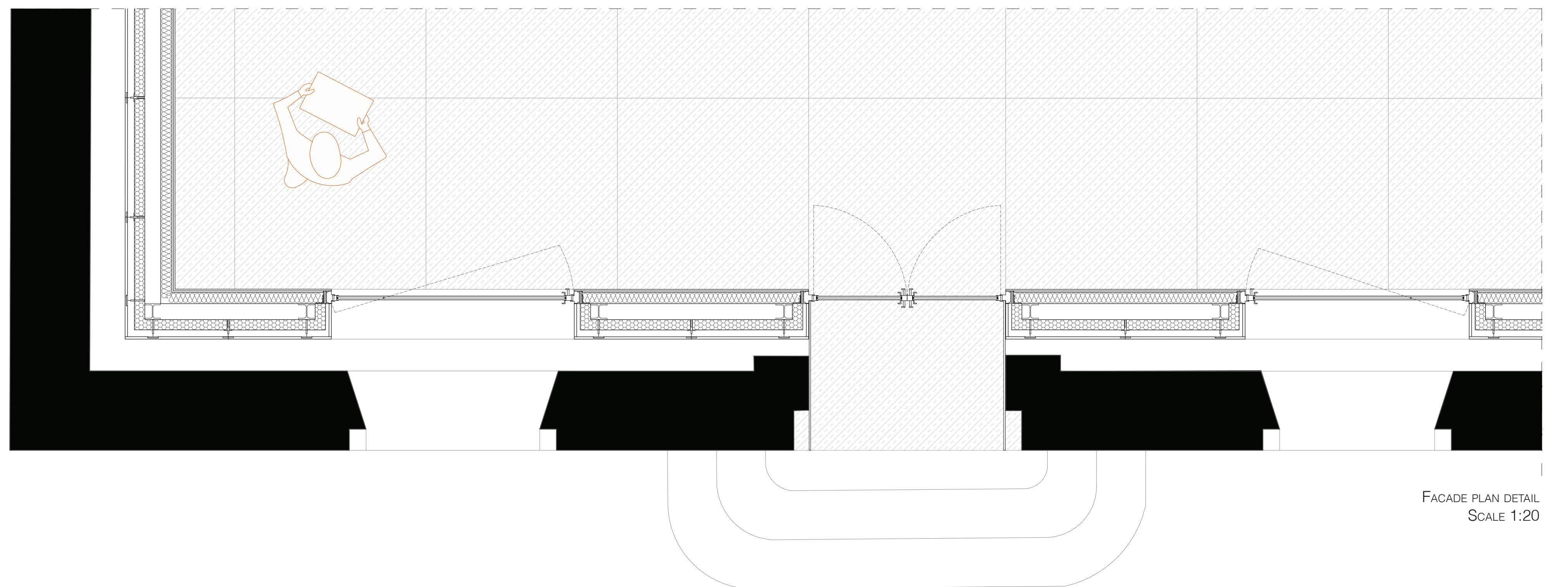
FACADE SECTION DETAIL
SCALE 1:20



FACADE ELEVATION DETAIL
SCALE 1:20

- 1 Stone tile finish 'Bokit' (Pietra di Cattaro) in fine smooth polish, white colour - 1.5cm
- 2 Galvanized sheet omegas tracing to hold the roof tiles 'Bokit'
- 3 Galvanized steel perimeter gutter for collecting water from the roof, hidden behind the wall finish tile
- 4 Beam tubular profile rectangular section
- 5 Wall finish - 2cm
- 6 Thermal insulation - 7cm
- 7 Main steel structure I beams - 10cm
- 8 Facade sandwich panels made of 5mm thick sheet inside and outside, with interior polyurethane insulation 6cm thick, fixed to the main structure.
- 9 Tile cladding system with hidden fixtures, connected to the main steel structure.
- 10 Wall finish tile 'Bokit' (Pietra di Cattaro) in fine smooth polish, white colour - 1.5cm
- 11 Floor finish 2cm
- 12 Concrete compression layer
- 13 Polyurethane insulation
- 14 L steel profile for compression cap fixture
- 15 Angular profiles for compression cap fixture
- 16 Steel profile UPN 160
- 17 Vertical waterproofing
- 18 Drainage pipe system
- 19 Perforated pavement for collecting water and dirt into the drainage piping system
- 20 Old (existing wall)

DETAIL EXPLANATION



FACADE PLAN DETAIL
SCALE 1:20

10_ FACADE DETAIL

Reuse of cultural heritage - Fortress Spanjola