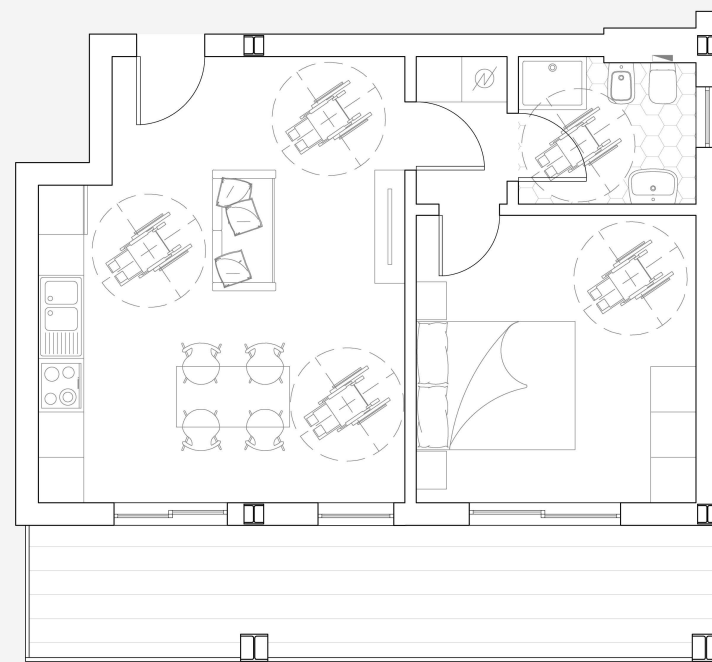


Monolocale
ERP
1 / 2 persone
32 mq
B - M 01



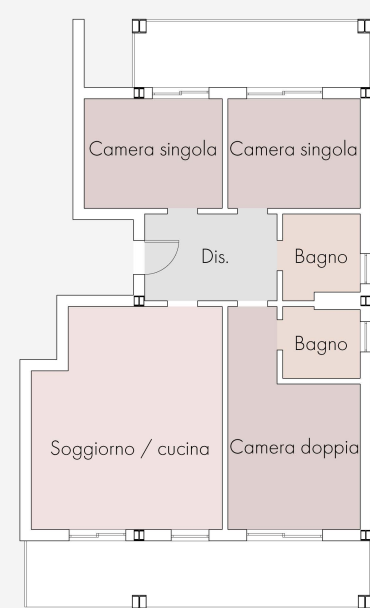
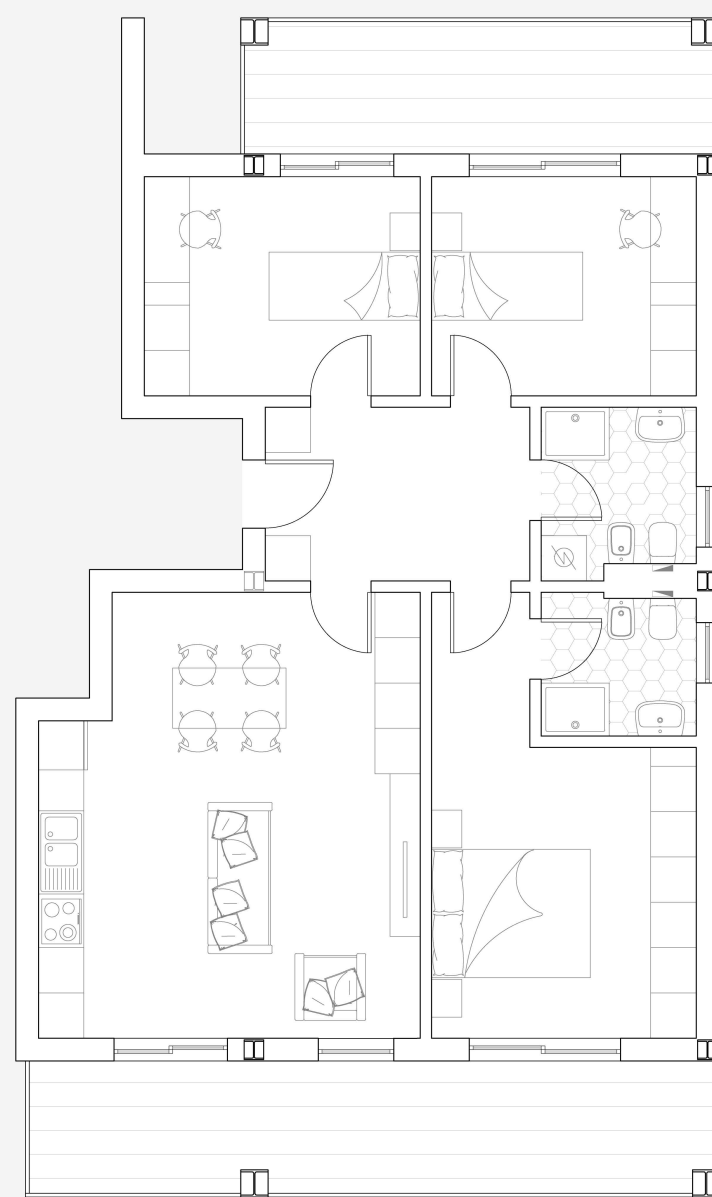
Superficie locale	Superficie illuminante R.I. > 1/10	Superficie areante R.I. > 1/10
Soggiorno / cucina / zona notte 25,77 mq	$2,00 \times 2,40 + 1,50 \times 2,40 = 8,40$ mq 1/3	$1,00 \times 2,40 + 0,70 \times 2,40 = 4,20$ mq 1/6
Disimpegno 2,58 mq	-	-
Bagno 4,63 mq	$0,80 \times 1,50 = 1,20$ mq 1/4	$10,80 \times 1,50 = 1,20$ mq 1/4



Bilocale
ERP
2 persone
47 mq
B - B 01



Superficie locale	Superficie illuminante R.I. > 1/10	Superficie areante R.I. > 1/10
Soggiorno / cucina 26,95 mq	$1,50 \times 2,40 + 1,00 \times 1,50 = 5,10$ mq 1/5	$0,70 \times 2,40 + 1,00 \times 1,50 = 3,20$ mq 1/8
Disimpegno 2,34 mq	-	-
Camera doppia 14,06 mq	$2,00 \times 2,40 = 4,80$ mq 1/3	$1,00 \times 2,40 = 2,40$ mq 1/6
Bagno 4,48 mq	$0,80 \times 1,50 = 1,20$ mq 1/4	$0,80 \times 1,50 = 1,20$ mq 1/4



Quadrilocale
ERP
4 persone
80 mq
B - Q 01



Superficie locale	Superficie illuminante R.I. > 1/10	Superficie areante R.I. > 1/10
Soggiorno / cucina 28,14 mq	$1,50 \times 2,40 + 1,00 \times 1,50 = 5,10$ mq 1/6	$0,70 \times 2,40 + 1,00 \times 1,50 = 5,40$ mq 1/9
Disimpegno 8,05 mq	-	-
Camera doppia 16,14 mq	$2,00 \times 2,40 = 4,80$ mq 1/4	$1,00 \times 2,40 = 2,40$ mq 1/4
Bagno 1 4,43 mq	$0,80 \times 1,50 = 1,20$ mq 1/3	$0,80 \times 1,50 = 1,20$ mq 1/3
Camera doppia 10,58 mq	$1,50 \times 2,40 = 3,00$ mq 1/3	$0,70 \times 2,40 = 3,00$ mq 1/4
Bagno 2 3,08 mq	$0,80 \times 1,50 = 1,20$ mq 1/3	$0,80 \times 1,50 = 1,20$ mq 1/3
Camera singola 10,15 mq	$2,00 \times 2,40 = 4,80$ mq 1/2	$1,00 \times 2,40 = 2,40$ mq 1/3

