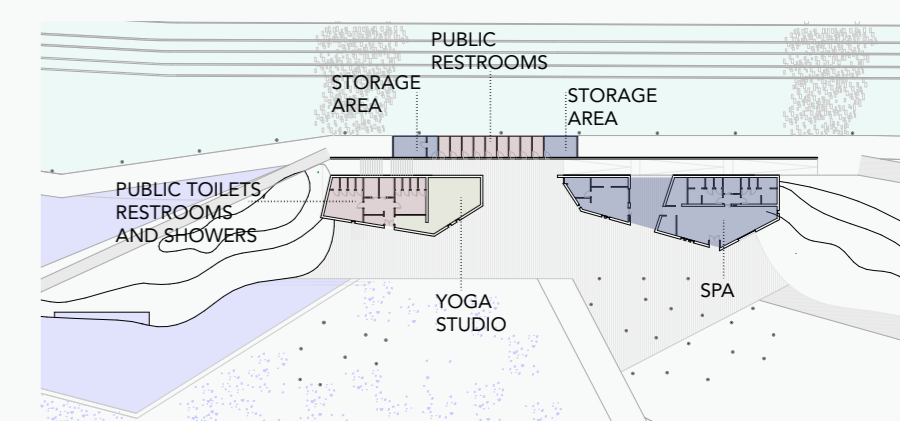
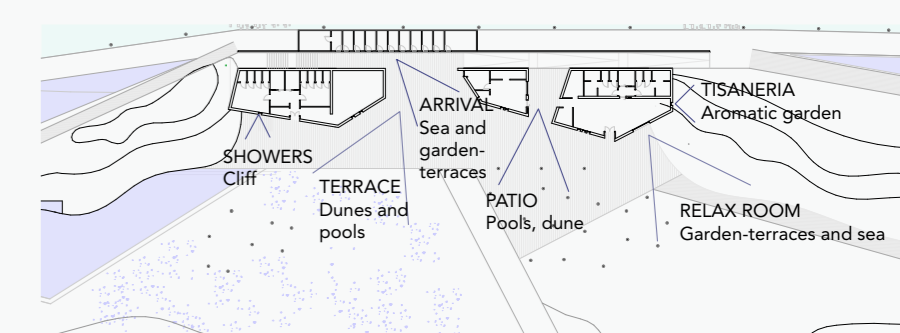
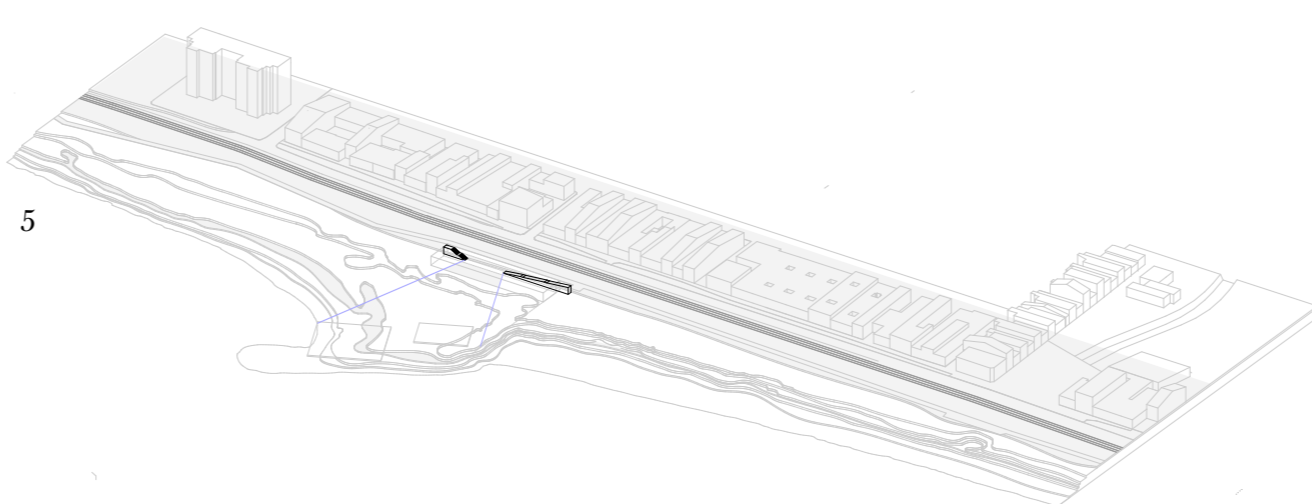
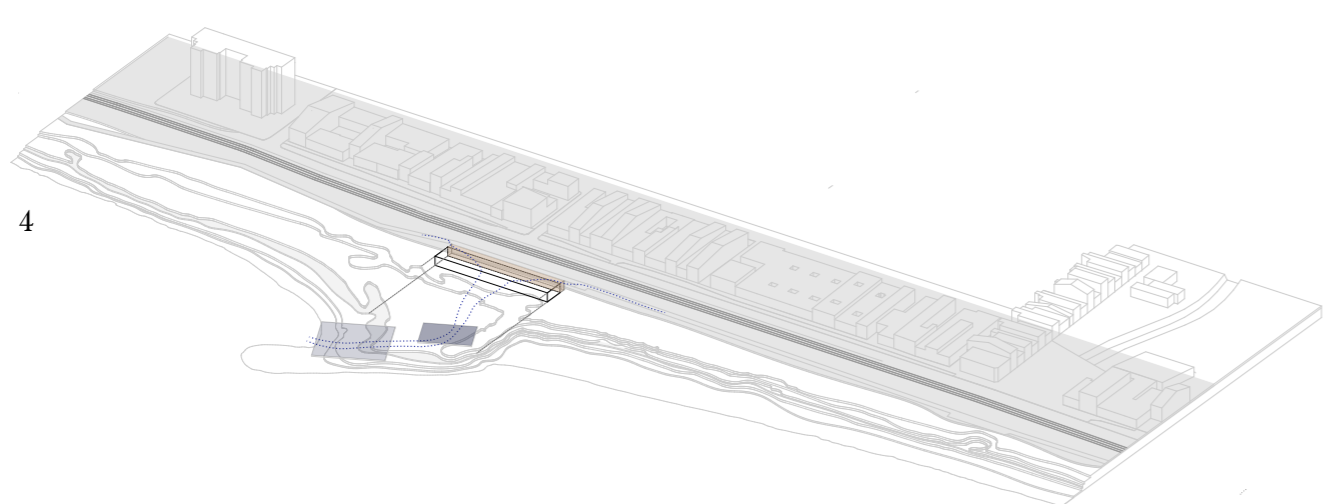
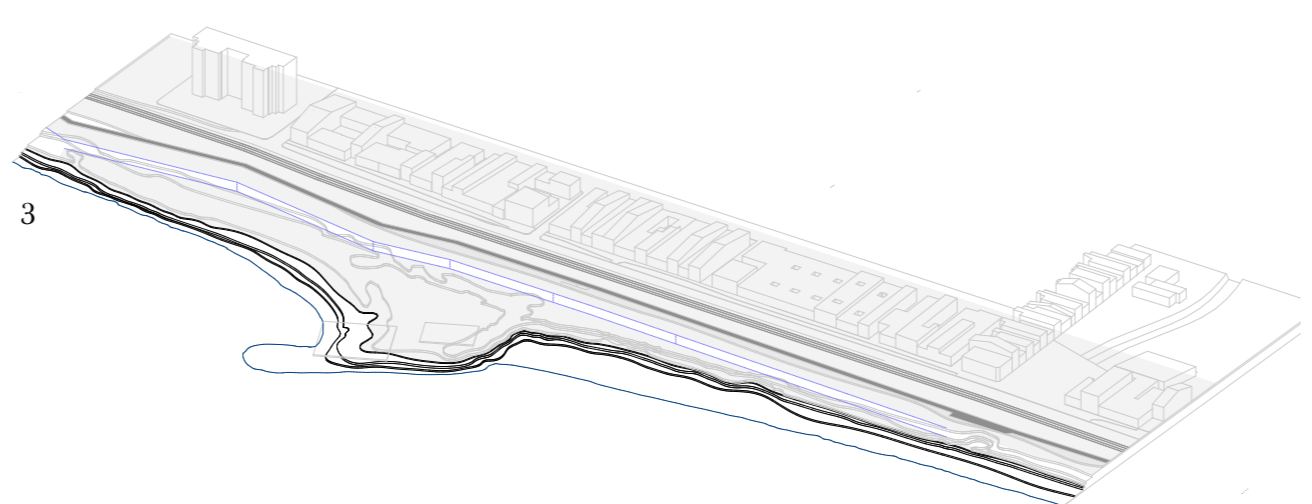
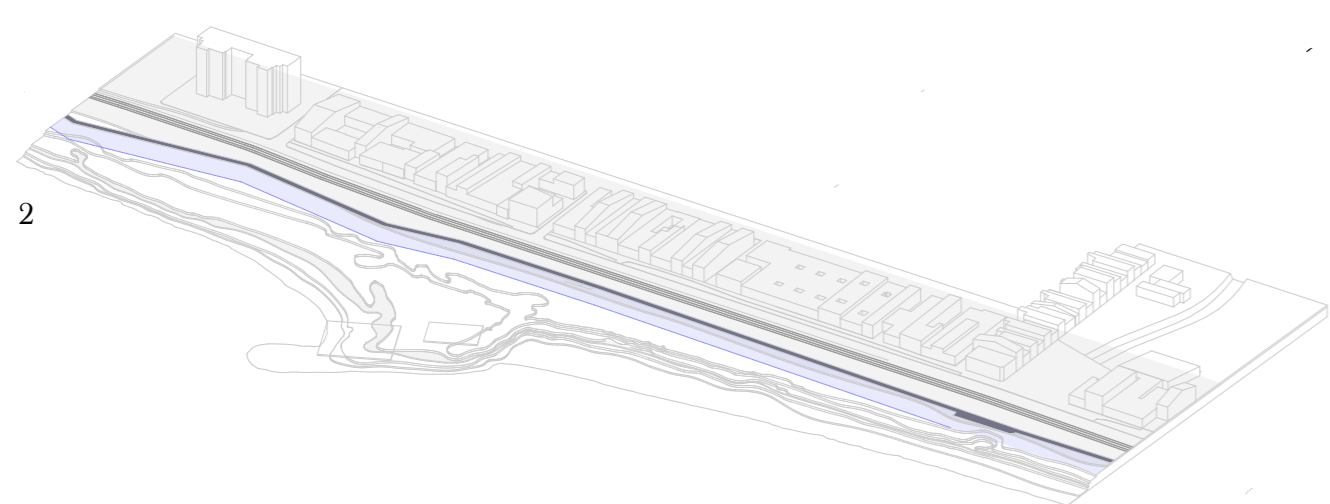
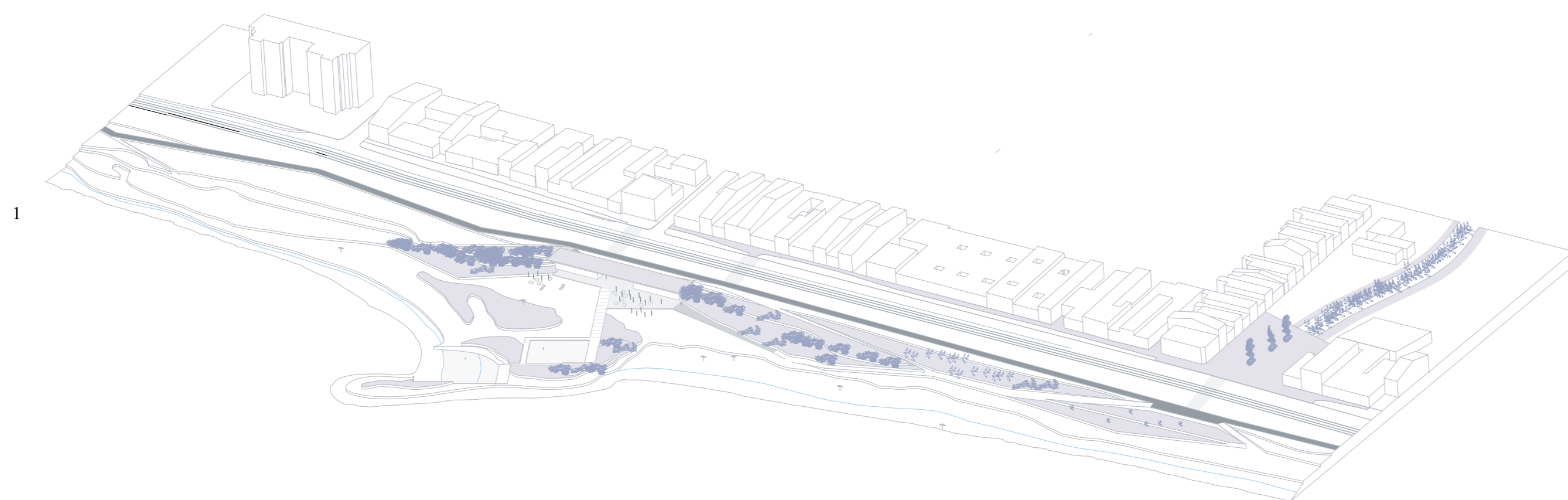


THE PAVILION OF THE OASIS

A building carved out of the sand dunes

The Pavilion of the Thermal Oasis houses the services related to the use of the beach, swimming pools and thermal oasis. The cabins and two depots have been positioned at the point of arrival (or ascent); in the south block there are the changing rooms and public showers, with connection to a multipurpose room, mainly designed for sports use.

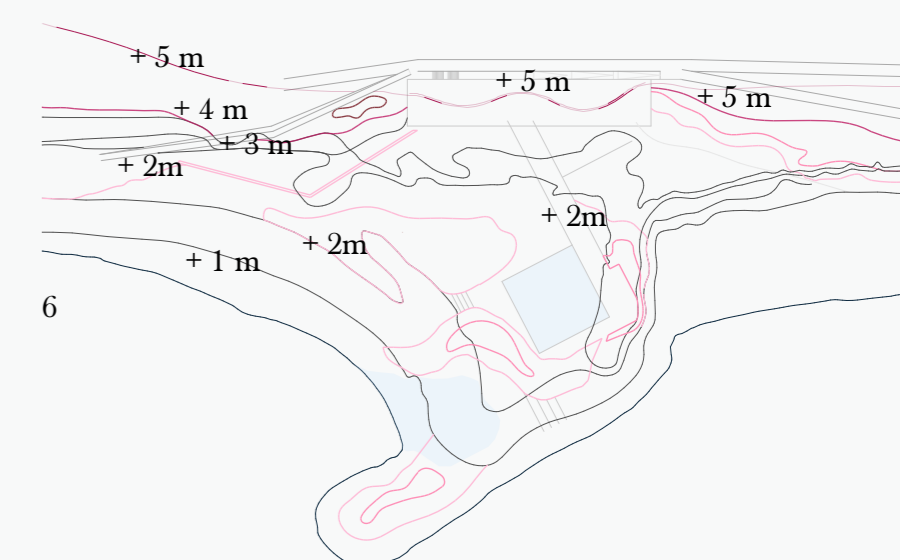


- PUBLIC USE
- PRIVATE USE WITH LIMITED ACCESS
- PUBLIC USE (PRIVATE WHEN NECESSARY)

The north block, on the other hand, is broken up by a patio to obtain a visual glimpse coming from the ramp; it hosts the thermal functions, becoming a wellness center, connected with the external thermal functions belonging to the park.

At the entrance we find the reception, which deliberately divides the relaxation room from the rest of the spaces, to make it more secluded and allow a view of all the garden terraces of the waterfront; from here direct access to the changing rooms and the bio sauna, and then go out onto the patio, and find yourself in the other block which includes an ice and salt room, benefits for the skin, a sauna and a Turkish bath, with a hot salted water and a whirlpool, which leads to the outside.

This space remains an open patio but made more intimate by the wooden panels, which allow a view of the sea, without leaving access from the outside.



1. A different vegetation strategy in the Thermal Oasis
2. Imaginary extension of the route
3. Taking advantage of the difference in height to define a new space hidden by the dunes
4. Physical and visual relationship with the pools
5. Terrain modeling represented by level curves

