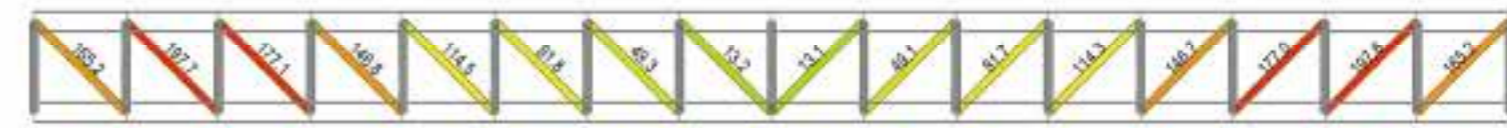


TRUSS STRESS  
TENS./COMP.  
197.72100  
166.64033  
135.55959  
104.47895  
73.39811  
42.31737  
0.00000  
-19.84411  
-50.92485  
-82.00500  
-113.08634  
-144.16708  
CB: SLUJ  
MAX : 20838  
MIN : 20824  
FILE: AUDITORIUM\_SEI  
UNIT: N/mm<sup>2</sup>



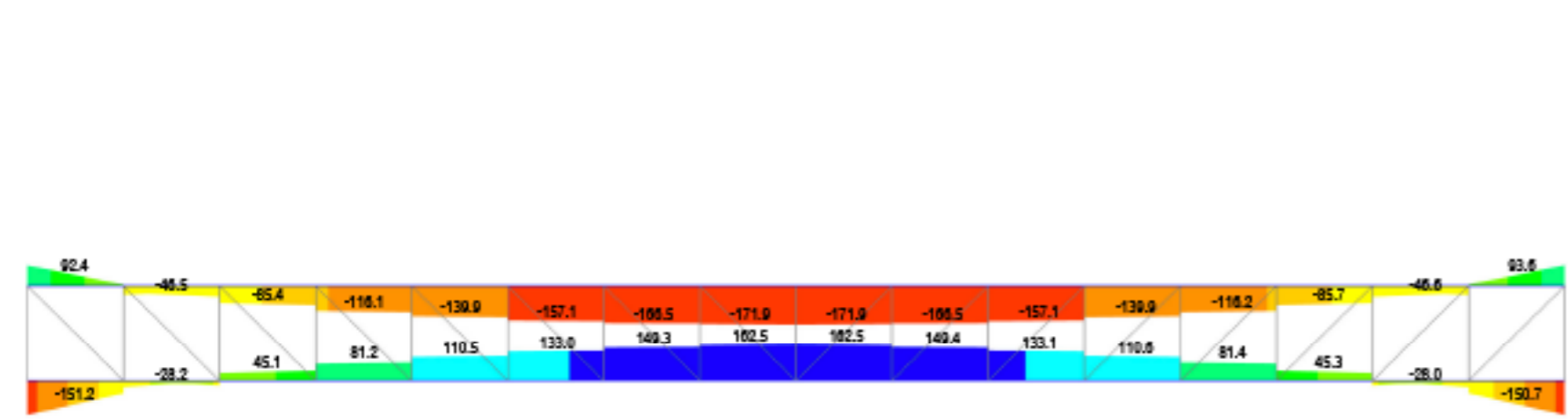
TRUSS STRESS  
TENS./COMP.  
197.72100  
166.64033  
135.55959  
104.47895  
73.39811  
42.31737  
0.00000  
-19.84411  
-50.92485  
-82.00500  
-113.08634  
-144.16708  
CB: SLUJ  
MAX : 20838  
MIN : 20824  
FILE: AUDITORIUM\_SEI  
UNIT: N/mm<sup>2</sup>

Sforzi sigma montanti travi reticolari

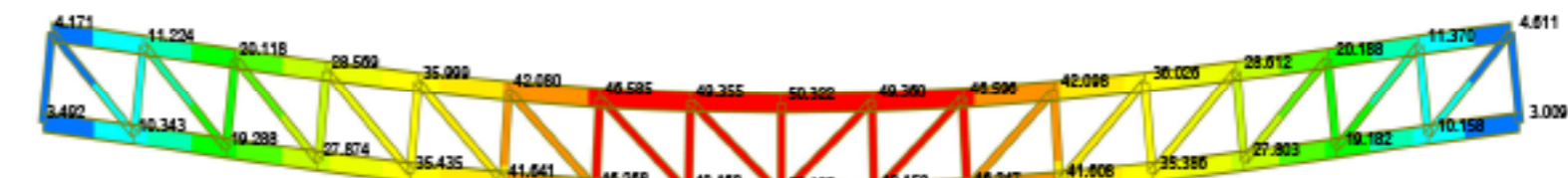
Acciaio tipo S355  
fyd = 338,10 MPa  
Sigma max = 144 MPa < fyd

Sforzi sigma diagonali travi reticolari

Acciaio tipo S355  
fyd = 338,10 MPa  
Sigma max = 197.72 MPa < fyd



BEAM STRESS  
COMBINED  
162.49322  
132.09115  
101.68908  
71.28700  
40.88493  
0.00000  
-19.91921  
-50.32128  
-80.72336  
-111.12043  
-141.52750  
-171.92957  
CB: SLUJ  
MAX : 20815  
MIN : 20799  
FILE: AUDITORIUM\_SEI  
UNIT: N/mm<sup>2</sup>



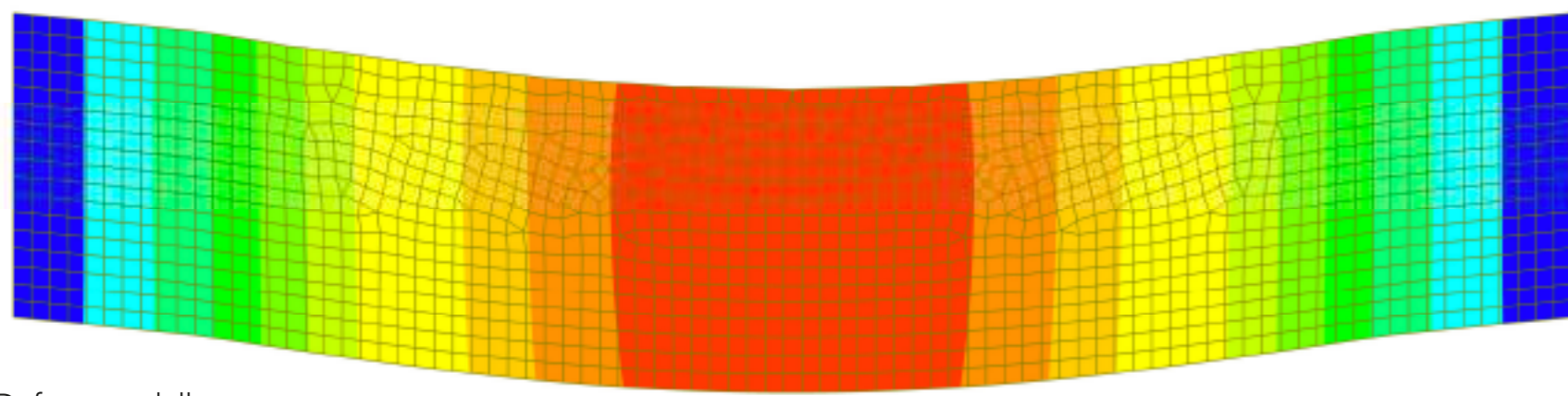
DISPLACEMENT  
RESULTANT  
80.32188  
46.02088  
31.71823  
22.11114  
14.81477  
8.81477  
4.21240  
1.81240  
0.00000  
SCALEFACTOR= 2.5972E+001  
CB: SLE\_RARA  
MAX : 41553  
MIN : 41576  
FILE: AUDITORIUM\_SEI  
UNIT: mm

Sforzi sigma correnti trave reticolare

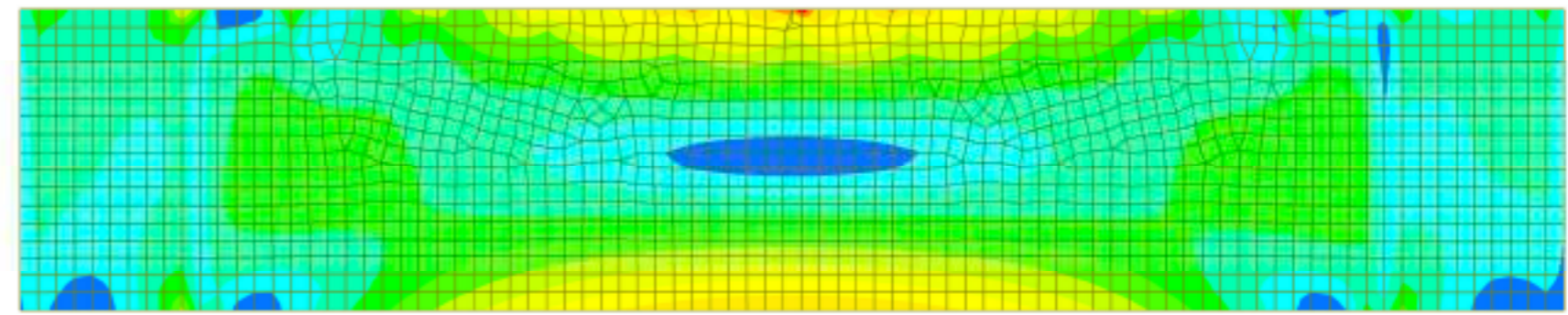
Acciaio tipo S355  
fyd = 338,10 MPa  
Sigma max = 171,92 MPa < fyd

Deformata della trave reticolare di copertura

Luce trave = 26 m  
Freccia ammissibile = 1/500 L (52 mm)  
Freccia max = 50,3 mm < 52 mm



DISPLACEMENT  
Z-DIRECTION  
-0.13896  
-0.59447  
-1.05898  
-1.52349  
-2.48490  
-3.38511  
-4.28532  
-5.18553  
-6.08574  
-6.98595  
SCALEFACTOR= 3.2313E+002  
CB: SLE\_RARA  
MAX : 74544  
MIN : 73474  
FILE: AUDITORIUM\_F  
UNIT: mm

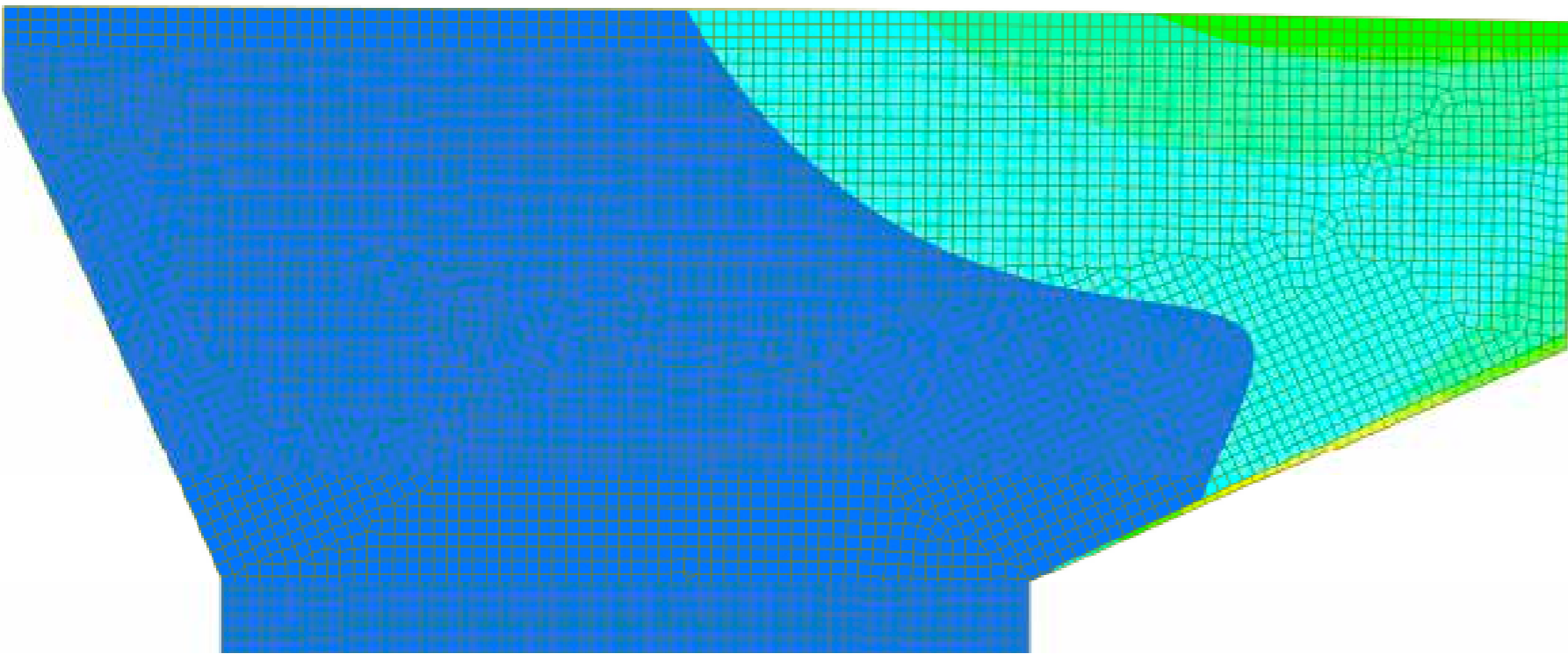


PLN STS/PLT STS  
SIG-EFF BOTH SIDE  
9.44309  
8.59547  
7.74785  
6.90023  
6.05260  
5.20498  
4.35736  
3.50974  
2.66212  
1.81450  
0.96688  
0.11926  
CB: SLU  
AVG NODAL  
MAX : 51768  
MIN : 51548  
FILE: AUDITORIUM\_F  
UNIT: N/mm<sup>2</sup>

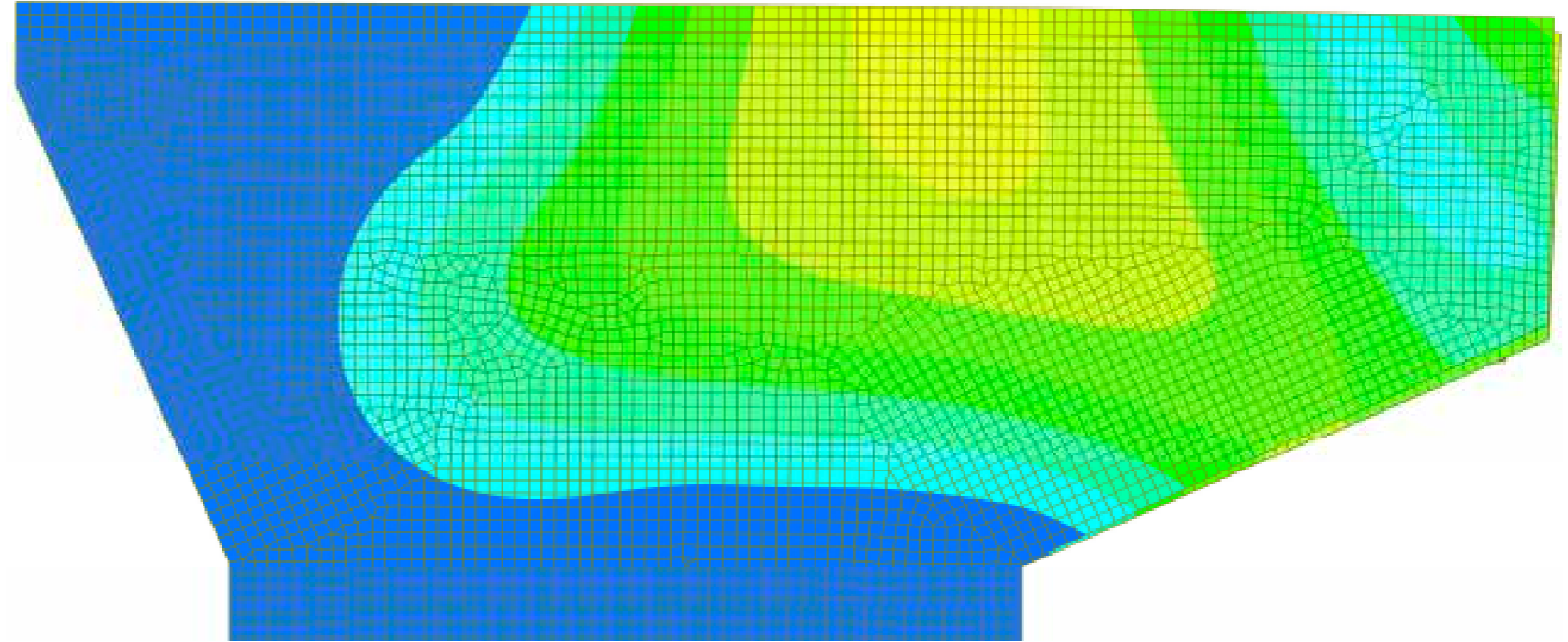
Deformata della trave parete

Luce trave = 26 m  
Freccia ammissibile = 1/500 L (52 mm)  
Freccia max = 5,24 mm < 52 mm

Sforzi sigma della trave parete



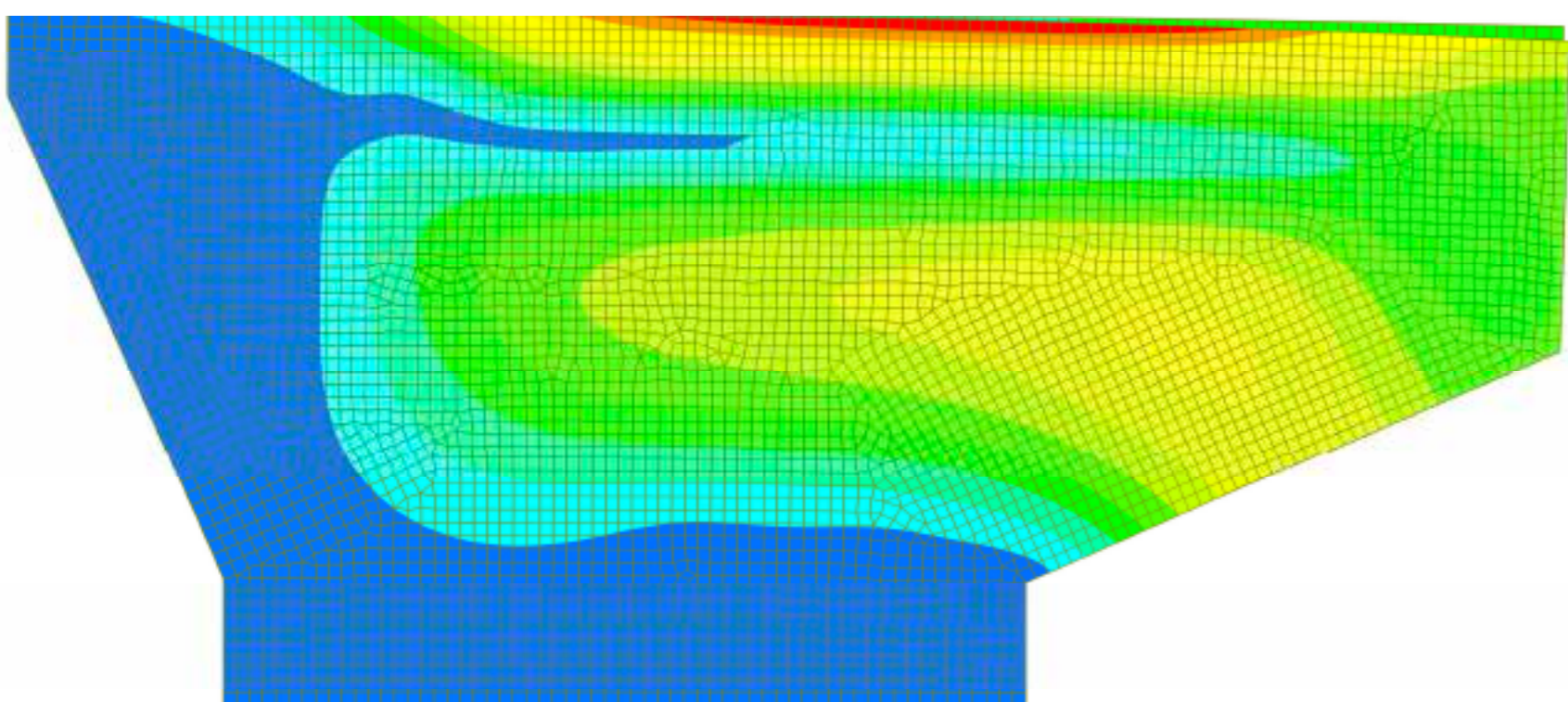
DISPLACEMENT  
RESULTANT  
18.37913  
13.89102  
10.39291  
7.89480  
5.39669  
2.89858  
0.39047  
-0.11764  
-0.62553  
-1.13342  
SCALEFACTOR= 1.5135E+002  
CB: SLE\_RARA  
MAX : 80062  
MIN : 129  
FILE: AUDITORIUM\_DE  
UNIT: mm



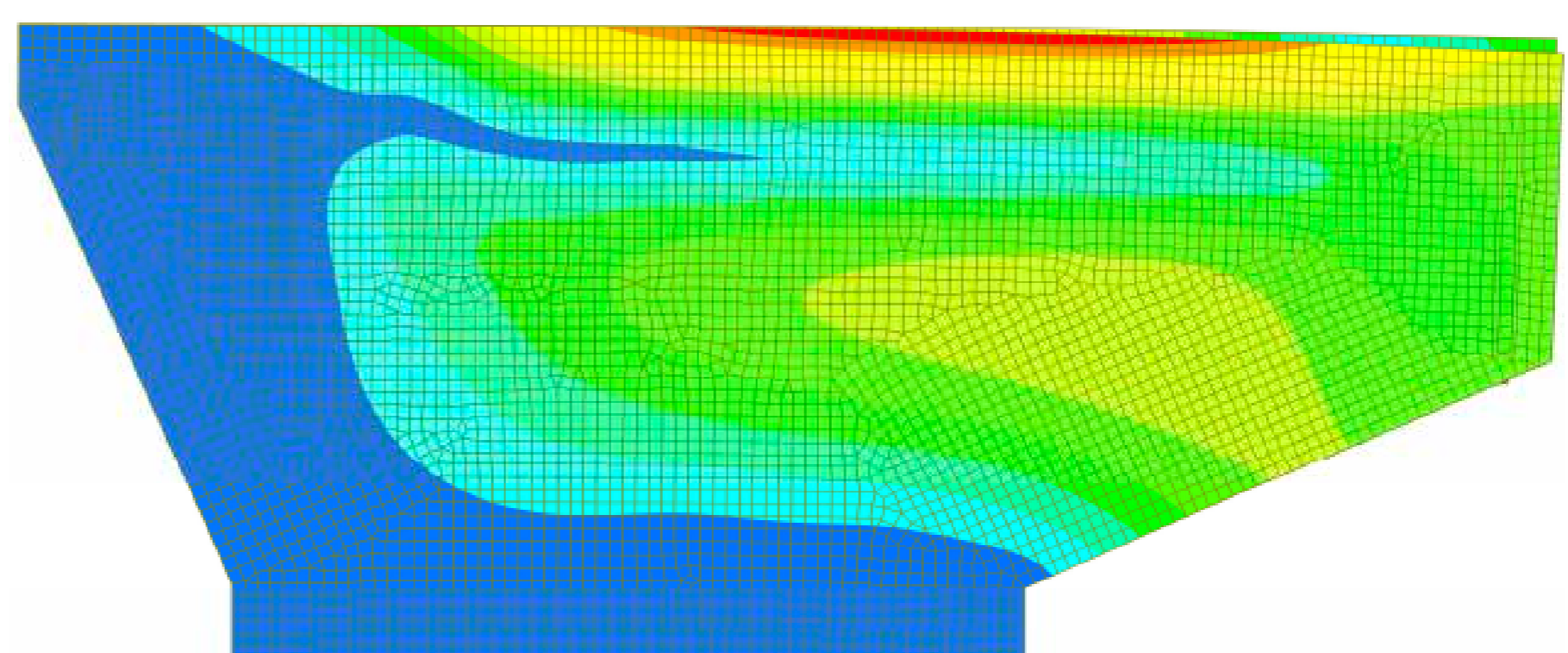
DISPLACEMENT  
RESULTANT  
14.81028  
13.44397  
12.07766  
10.71135  
9.34504  
7.97873  
6.61242  
5.24611  
3.87980  
2.51349  
1.14718  
-0.21913  
SCALEFACTOR= 1.5716E+002  
CB: SLE\_RARA  
MAX : 80065  
MIN : 129  
FILE: AUDITORIUM\_SE  
UNIT: mm

Deformata del setto esterno senza collegamenti

Deformata del setto esterno con i collegamenti



DISPLACEMENT  
RESULTANT  
18.37913  
13.89102  
10.39291  
7.89480  
5.39669  
2.89858  
0.39047  
-0.11764  
-0.62553  
-1.13342  
SCALEFACTOR= 1.5135E+002  
CB: SLE\_RARA  
MAX : 80062  
MIN : 129  
FILE: AUDITORIUM\_DEI  
UNIT: mm

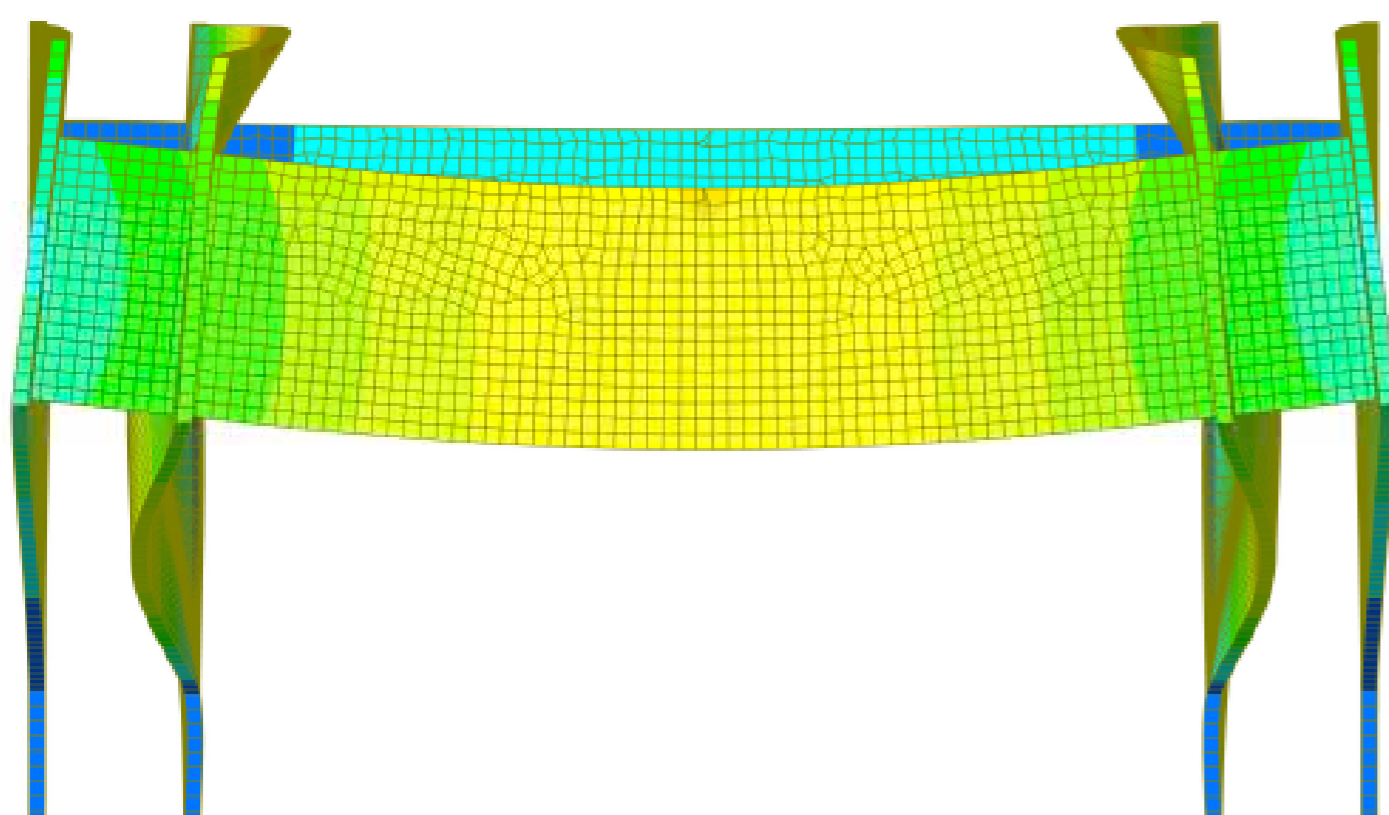


DISPLACEMENT  
RESULTANT  
14.81028  
13.44397  
12.07766  
10.71135  
9.34504  
7.97873  
6.61242  
5.24611  
3.87980  
2.51349  
1.14718  
-0.21913  
SCALEFACTOR= 1.5716E+002  
CB: SLE\_RARA  
MAX : 80065  
MIN : 129  
FILE: AUDITORIUM\_SEI  
UNIT: mm

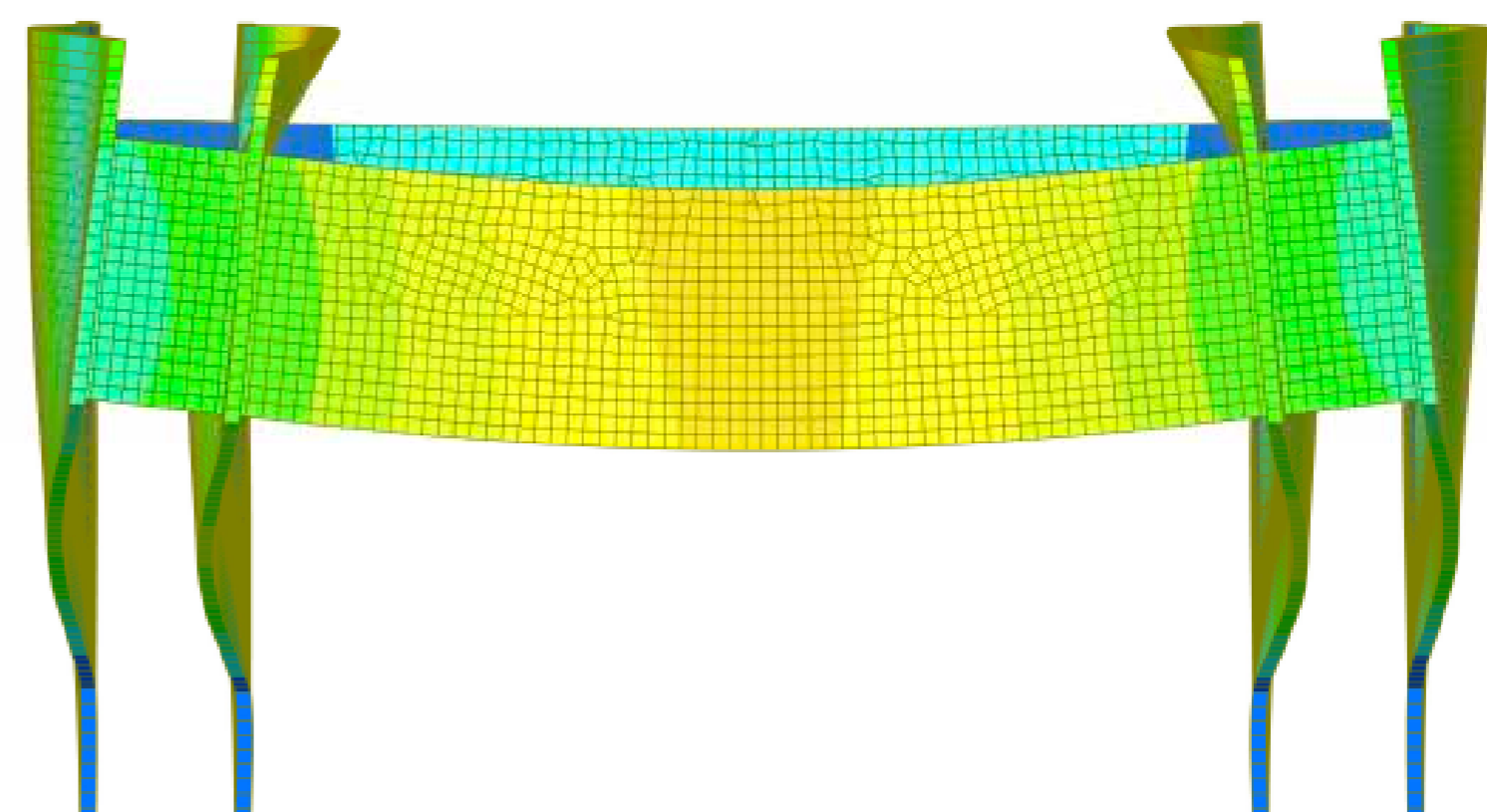
Deformata del setto interno senza collegamenti

Deformata del setto interno con i collegamenti

Luce mensola = 20 m  
Freccia ammissibile = 1/250 L (80 mm)  
Freccia max = 1,48 mm < 80 mm



DISPLACEMENT  
RESULTANT  
18.37913  
13.89102  
10.39291  
7.89480  
5.39669  
2.89858  
0.39047  
-0.11764  
-0.62553  
-1.13342  
SCALEFACTOR= 1.5135E+002  
CB: SLE\_RARA  
MAX : 80062  
MIN : 129  
FILE: AUDITORIUM\_DEI  
UNIT: mm



DISPLACEMENT  
RESULTANT  
14.81028  
13.44397  
12.07766  
10.71135  
9.34504  
7.97873  
6.61242  
5.24611  
3.87980  
2.51349  
1.14718  
-0.21913  
SCALEFACTOR= 1.5716E+002  
CB: SLE\_RARA  
MAX : 80065  
MIN : 129  
FILE: AUDITORIUM\_SEI  
UNIT: mm

Deformata degli elementi in c.a. senza collegamenti

Deformata degli elementi in c.a. con i collegamenti