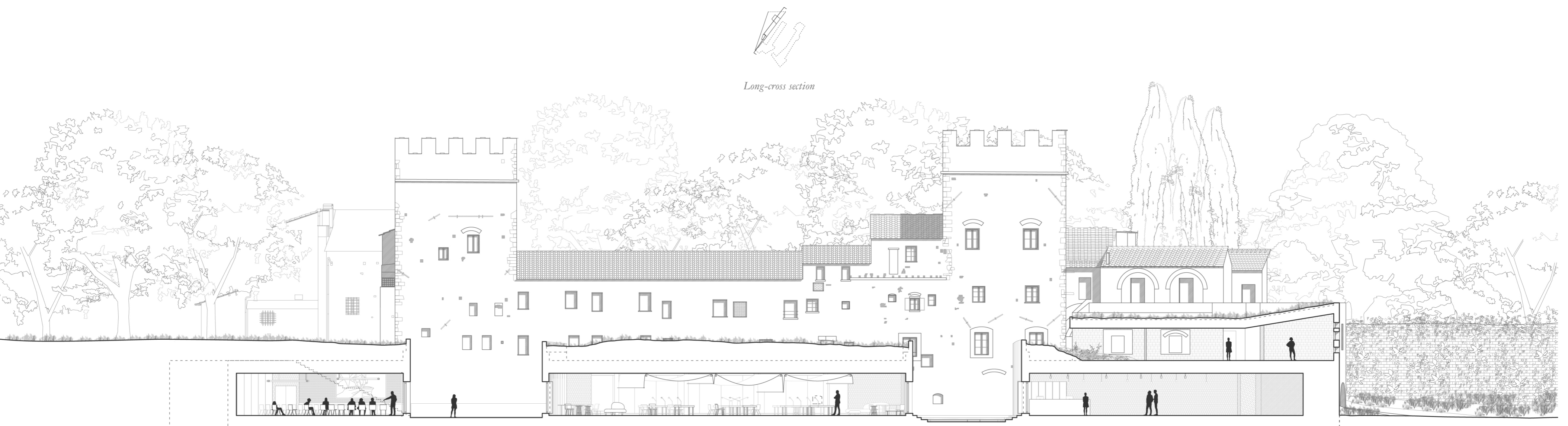


# DESIGN PROPOSAL

**WORKSPACES:** A1. Intensive craftsmanship: stations for mechanical processing of wool using didactic looms and sewing machines; A2. Intensive craftsmanship: stations for the mechanical processing of leather using presses, clamps and perforations; A3. Intensive craftsmanship: stations for manual leather processing; A4. Intensive craftsmanship: stations for the mechanical processing of wool using presses, clamps and perforations; A5. Intensive craftsmanship: stations for the mechanical processing of wool using didactic looms and sewing machines;  
**L1.** Space for mechanical processing of wool; **L2.** Space for mechanical leather processing; **L3.** Space for processing and conversion of used fabrics; **L4.** Research area for fabric 3D printing  
**PUBLIC SPACES:** C1. Conference room and frontal lessons; **R1.** Reception; **W1.** Space for informal working and co-working; **W2.** Space for informal working and co-working; **X1.** Lounge  
**EXHIBITION SPACES:** E1. Exhibition room of the ancient hydraulic machinery: piles, risine and fullers; **E2.** Exhibition hall not accessible  
**SERVICE SPACES:** D2. Storage room; **D3.** Deposit for agricultural equipment; **M1.** Warehouse of wool yarn; **M2.** Leather warehouse; **S2.** Toilet facilities inside the exhibition area; **S3.** Toilet facilities within the busting area; **T1.** Technical space



Scale 1:200