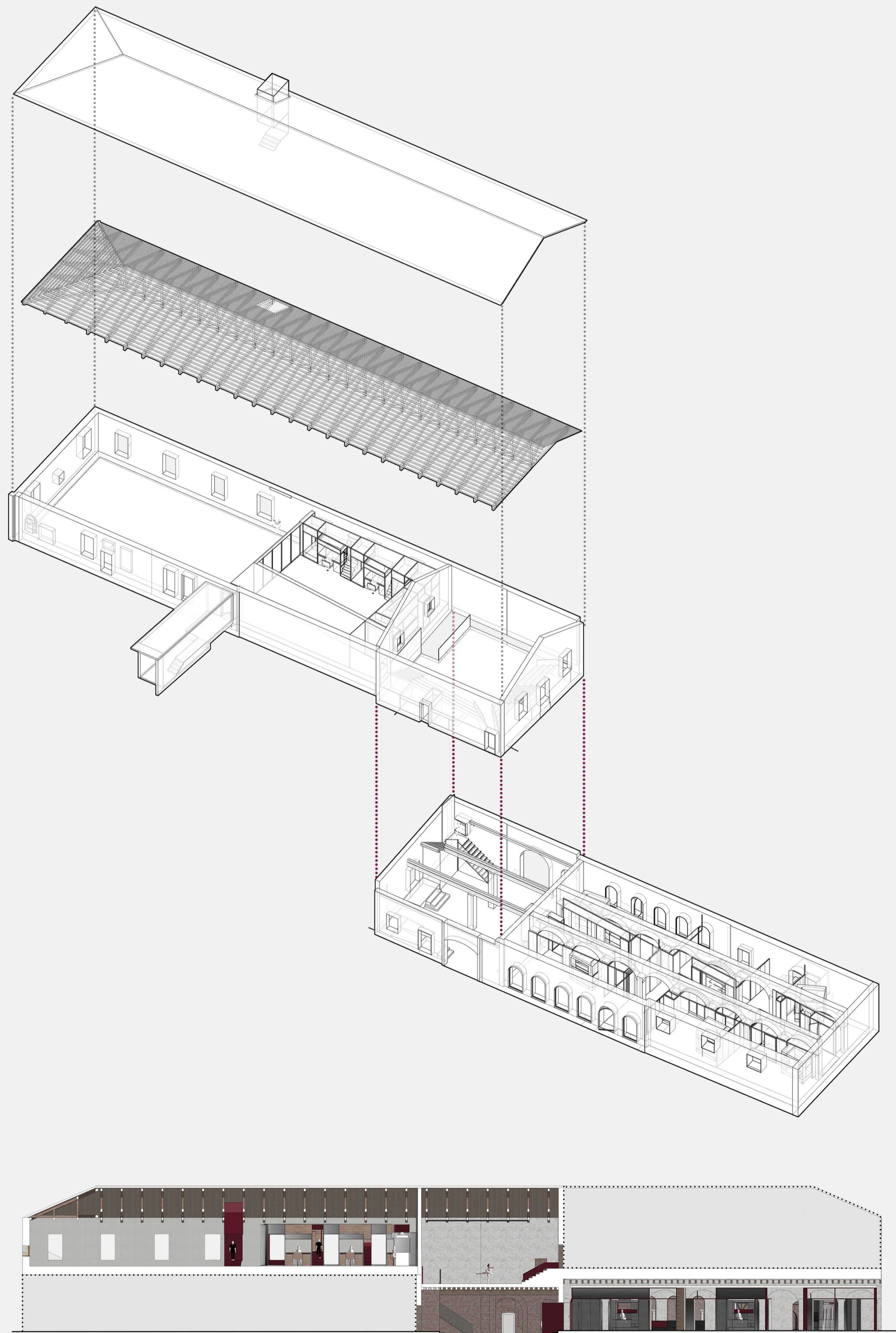


RED FRAGMENTS: A new dialogue between interiors and exteriors of Santi Cosma and Damiano former convent

Artist-in-residence at Bevilacqua La Masa Foundation in Giudecca island, Venice

Prelude: The Two Hallways before Entering



axo &
plan with dimension



axo &
plan with dimension



axo &
plan with dimension



axo &
plan with dimension