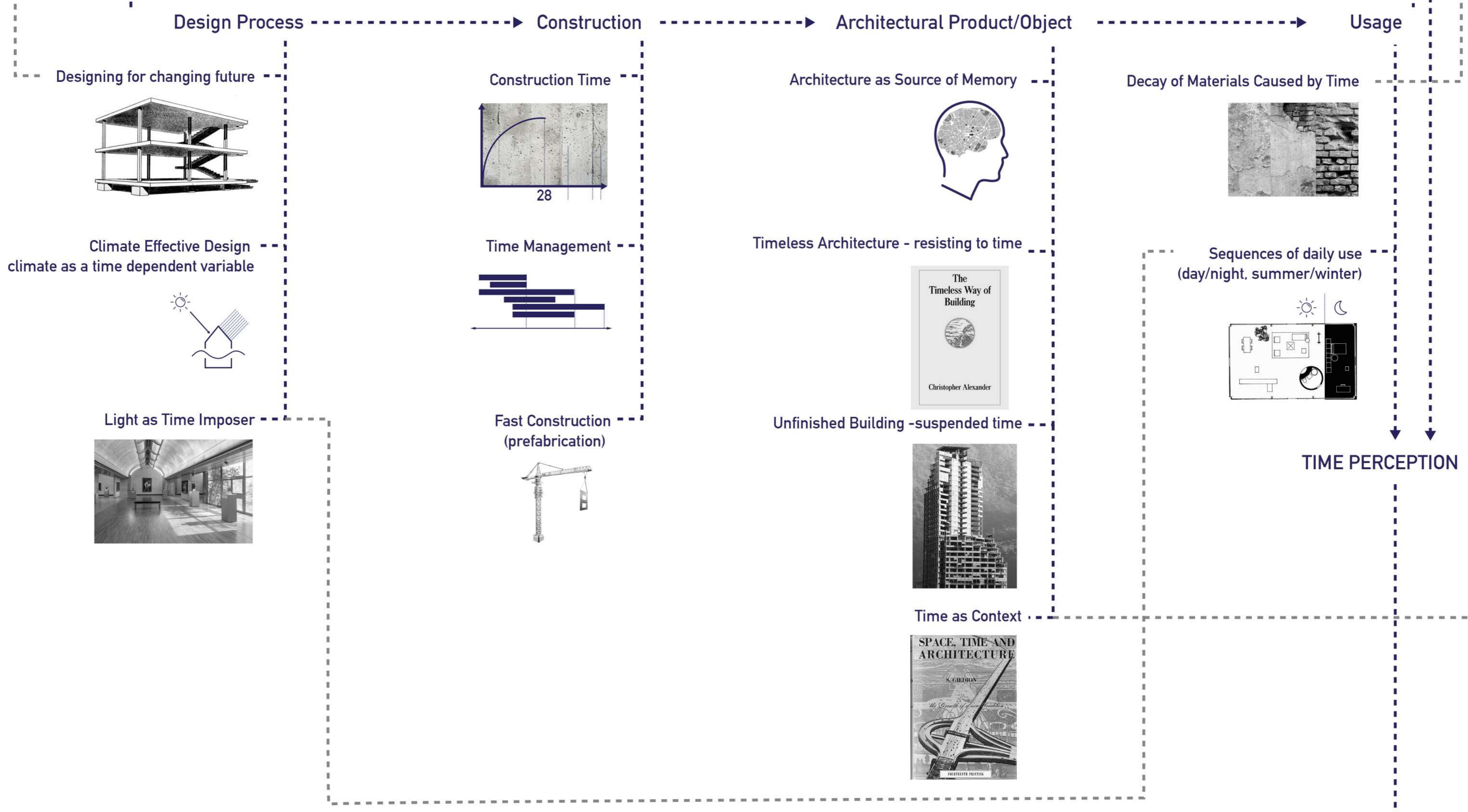


ARCHITECTURE & TIME



TIME PERCEPTION

Psychological Approach

Phenomenological Approach

Scientific (Physics) Approach

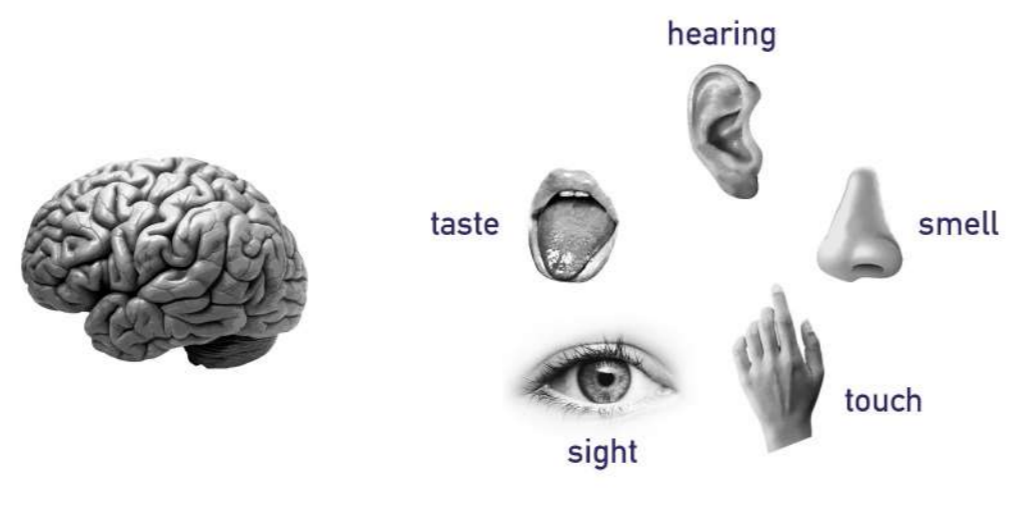
123123123123123123123123123123123123
present

- "Spacious Present" by William James

past | present | future
past | present | future
past | present | future
past | present | future
past | present | future
past | present | future
past | present | future
past | present | future

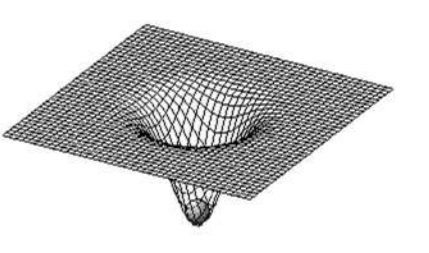
- Newtonian Time /Linear Time

past | present | future
past | present | future
past | present | future
past | present | future
past | present | future
past | present | future
past | present | future
past | present | future



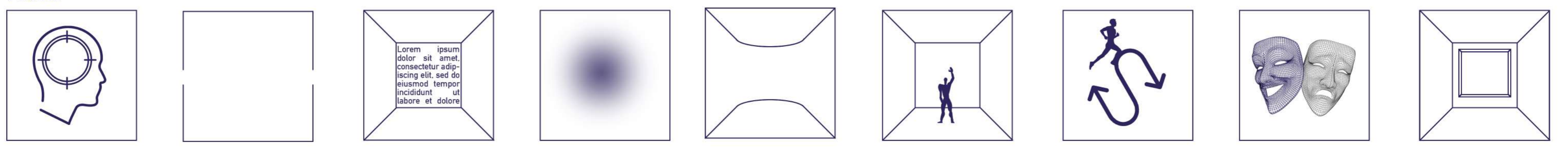
- "Consciousness of Time" by Edmund Husserl

past | present | future
past | present | future
past | present | future
past | present | future
past | present | future
past | present | future
past | present | future
past | present | future

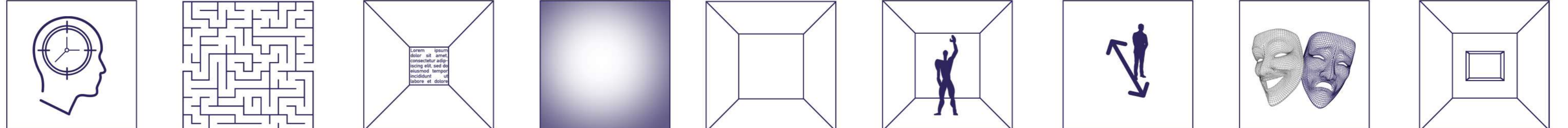


EXPERIMENTS

Faster



Concentration on Time, Limiting Movement, Distance of Display Surface, Brightness, Form, Scale of Environment, Action & Changes, Emotions, Size of Visual Display Area



Slower

FASTER

SLOWER



School Complex
MoDus Architects, 2016



Los Pilares School
Dovat Arquitectos, 2018

Bigger Scale of Environment



Borgafjellet Elementary School
LINK arkitektur, 2021

SCALE OF ENVIRONMENT

Smaller Scale of Environment



Early Childhood Center
Mahlum Architects, 2012



Benfeld Aristide Briand Primary School
Lionel Debs Architectures, 2015



Lucie Aubrac School
Coldefy & Associés, 2013

Bigger Visual Demonstration Area



Collodi Primary School
Settantat7, 2021



Suresnes Open-Air School
Marcel Lods, Eugène Beaudouin, 1935

VISUAL DEMONSTRATION AREA

Smaller Visual Demonstration Area



Ai Saleggi Primary School
Studio Vacchini, 1972-78



Weissenstein New School Building
Ernst Niklaus Fausch Partner, 2020

Decelerating/Accelerating Speed



Ai Saleggi Primary School
Studio Vacchini, 1972-78



Hellerup School
Arkitema Architects, 2011

SPEED OF MOVEMENT

Constant Speed



G.Zanella Primary School
Giulia de Appolonia, 2016



Fuji Kindergarten
Tezuka Architects, 2007

Curvilinear Form



Rosa Nursery School
Mario Botta, 2001-04



Mary Lyon Elementary School
Erickson McGovern Architects, 2019



Shenzhen Hongshan Middle School
CAPOL, 2022

FORM

Linear/Prismatic Form



School Group Paulette-Deblock
zigzag architecture, 2015



Prangins Kindergarten
Pierre-Alain Dupraz, 2015

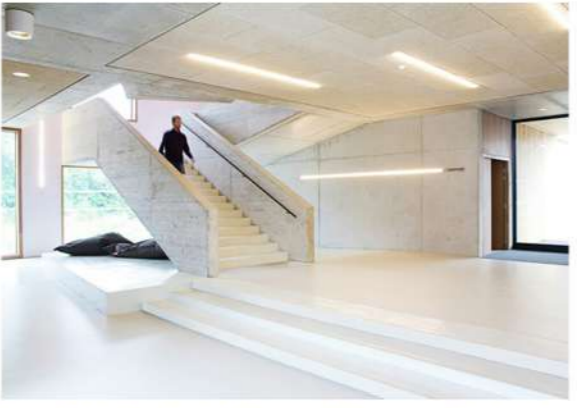


Suresnes Open-Air School
Marcel Lods, Eugène Beaudouin, 1935

Bright Light



Hellerup School
Arkitema Architects, 2011



Benfeld Aristide Briand Primary School
Lionel Debs Architectures, 2015



Learners Hall-International School
Mahlum Architects, 2016

LIGHT

Dim Light



YNS Yamaikarashi Nursery School
Takeru Shoji Architects, 2021



Los Pilares School
Dovat Arquitectos, 2018



Morbio Inferiore Middle School
Mario Botta, 1972-77

Unlimited Movement



Fuji Kindergarten
Tezuka Architects, 2007



Leutschenbach School
Christian Kerez, 2009

RESTRICTION OF MOVEMENT

Limited Movement



Thomas Deacon Academy
Foster+Partners, 2007



Hellerup School
Arkitema Architects, 2011

Closer Display (View) Area



Ai Saleggi Primary School
Studio Vacchini, 1972-78



Joseph D. Jamail Lecture Hall
LTL Architects, 2017

DISTANCE OF DISPLAY AREA

Far Display (View) Area



Morbio Inferiore Middle School
Mario Botta, 1972-77



Suresnes Open-Air School
Marcel Lods, Eugène Beaudouin, 1935

More Changes & Actions



Žnjan-Pazdigrad Primary School
x3m, 2017



Mary Lyon Elementary School
Erickson McGovern Architects, 2019



Borgafjellet Elementary School
LINK arkitektur, 2021

CHANGES & ACTIONS

Less Changes & Actions



Salmtal Secondary School Canteen
SpreierTrenner Architekten, 2012



Early Childhood Center
Mahlum Architects, 2012



Leutschenbach School
Christian Kerez, 2009

FASTER

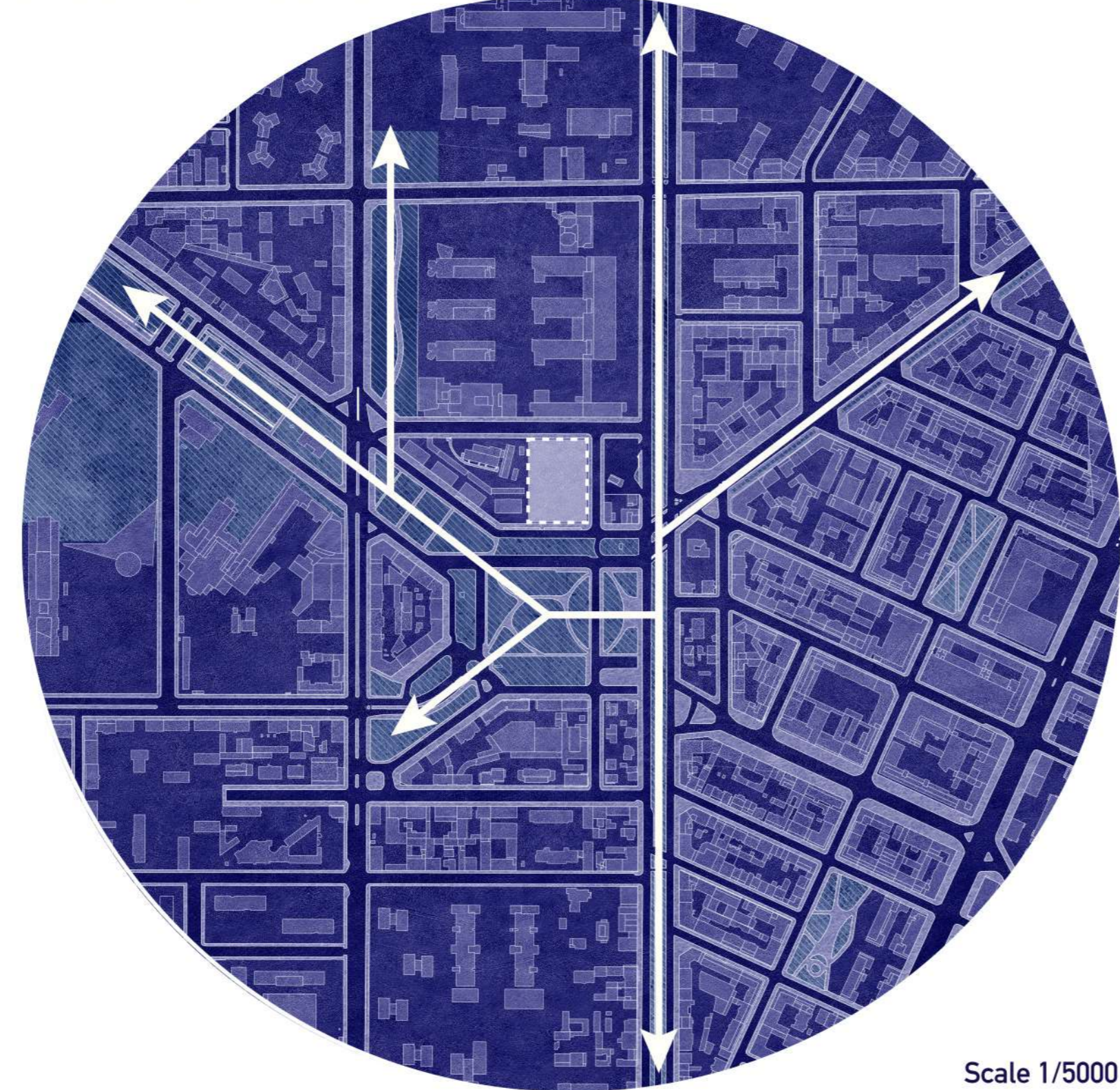
SLOWER

LOCATION



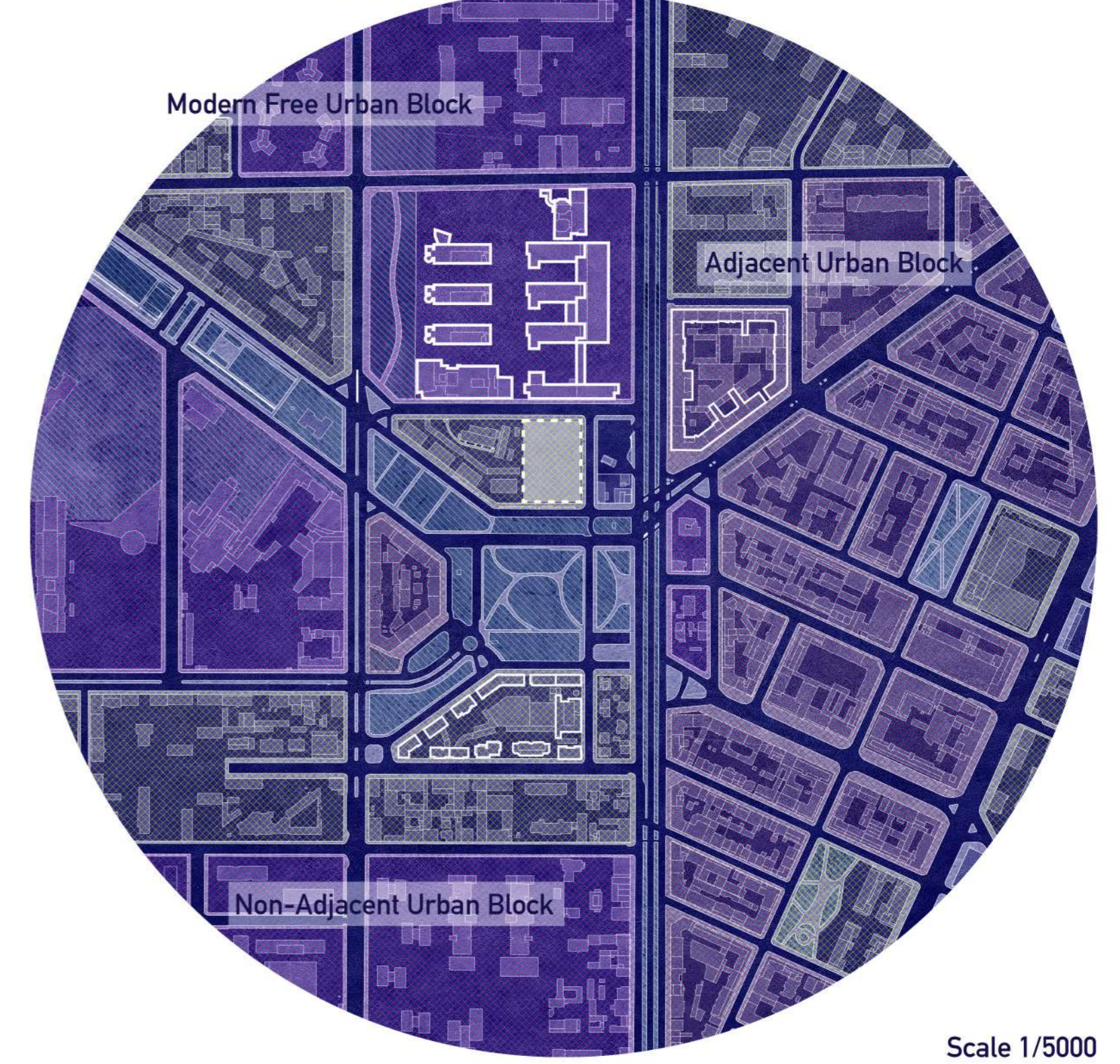
Primary school named as Instituto Comprensivo Statale-Cardarelli Massaua (State Comprehensive Institute) is chosen for the factors of:
 -being a project of reconstruction rather than renovation
 -closer location to city center which allows denser urban context and more urban inputs possible
 -size of site that allows exploration on topic in exterior space/courtyard
 -being primary school since the presence of extensive school programme compared to kindergarden or creche while targeting younger age group as to secondary or highschools.
 -possible future improvements and connections with neighbour kindergarden (infanzia) and creche (nido), allowing opportunity of further investigations on topic with different age groups.

GREEN CONNECTION

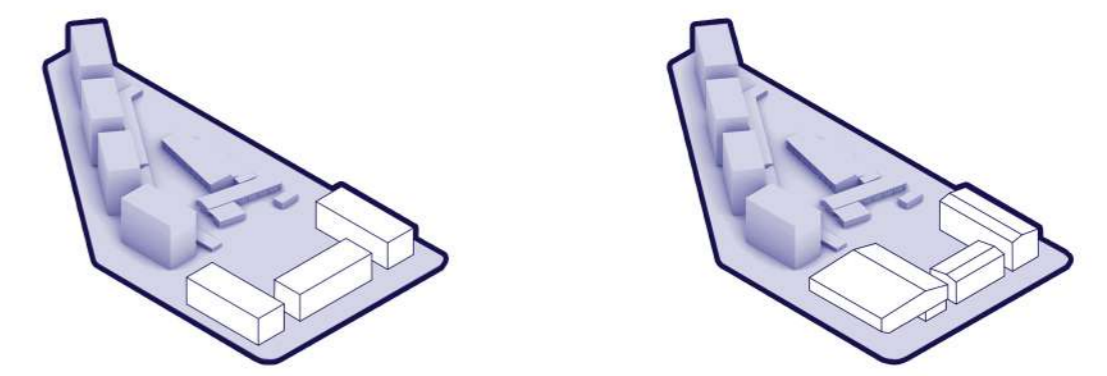
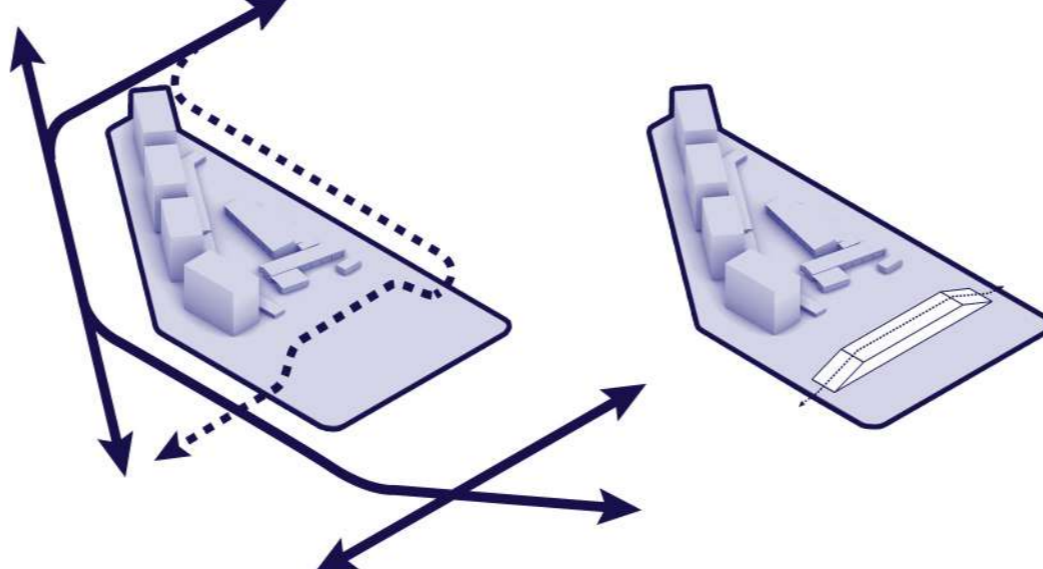
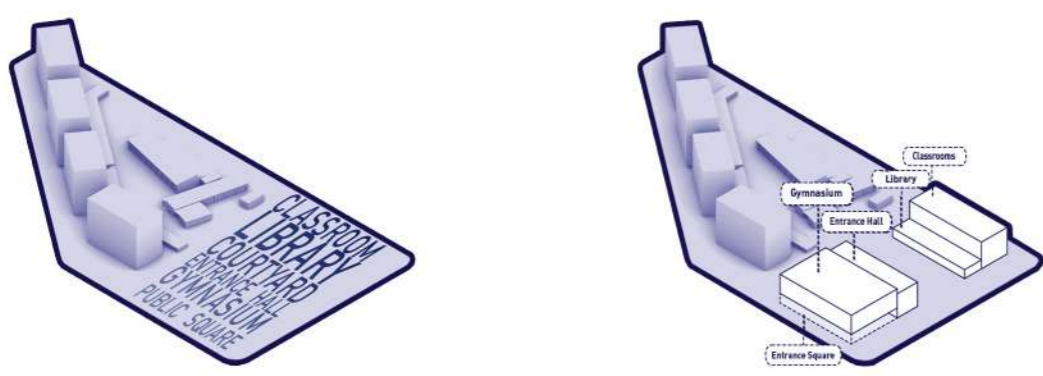
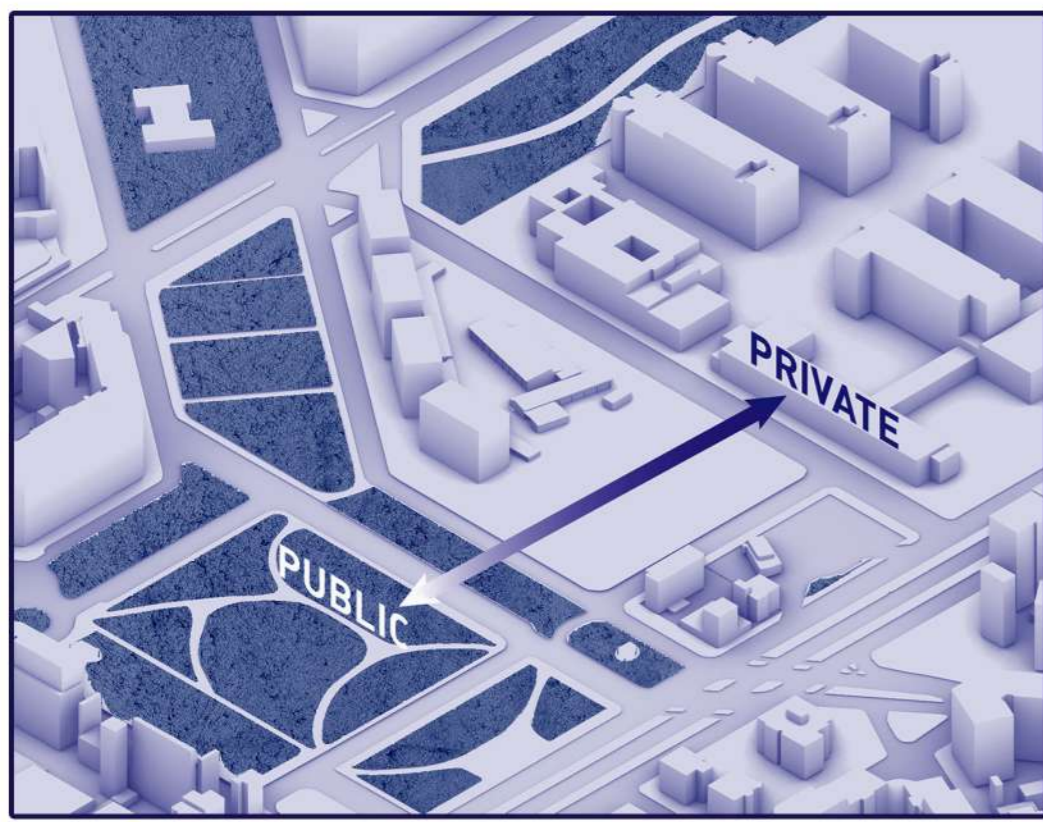


Scale 1/5000

URBAN MORPHOLOGY



Scale 1/5000



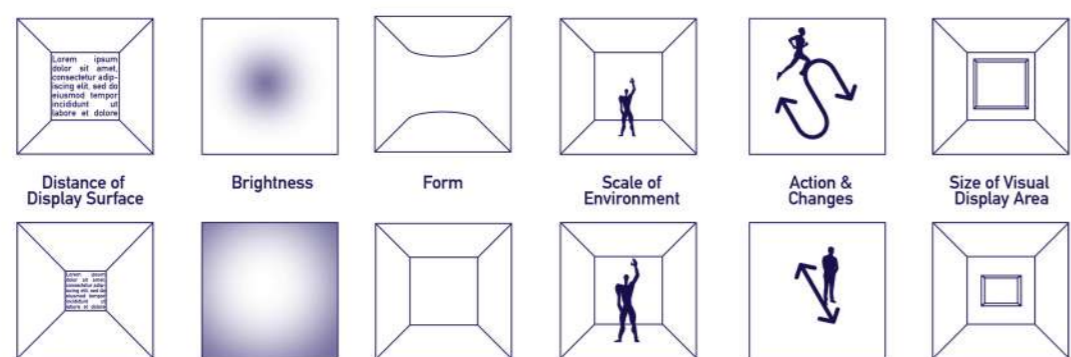
Gradual transition between public to private is intended to break this tension. To achieve this intention, the public square is extended to site and while public shared functions as gym and entrance hall are placed facing the square, private school spaces as classrooms, library are placed facing the Via Massaua.

A new route of green is planned to pass through site in the aim of strengthening the green network while connecting neighbour schools. This public pass will provide an alternative connection not only for the project school but also to the residential and commercial neighbourhood. Public pass is elevated due to security consideration of school and requirement of separation of public and private spaces.

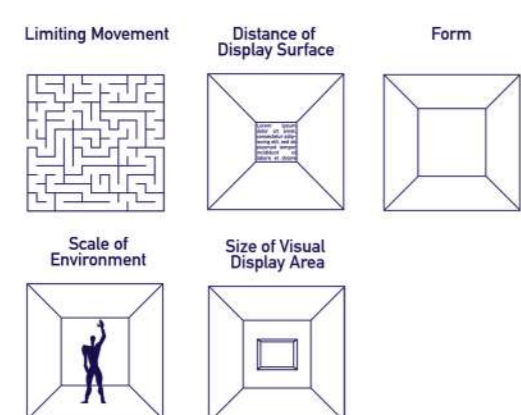
Non-adjacent urban block principle is decided to be followed. Therefore three side of school site which are facing the perimeter of urban plot are required to be shaped with volumes. On the front facade that faces to public square, street alignment with existing buildings is considered.

DESIGN PRINCIPLES FOR SCHOOL SPACES

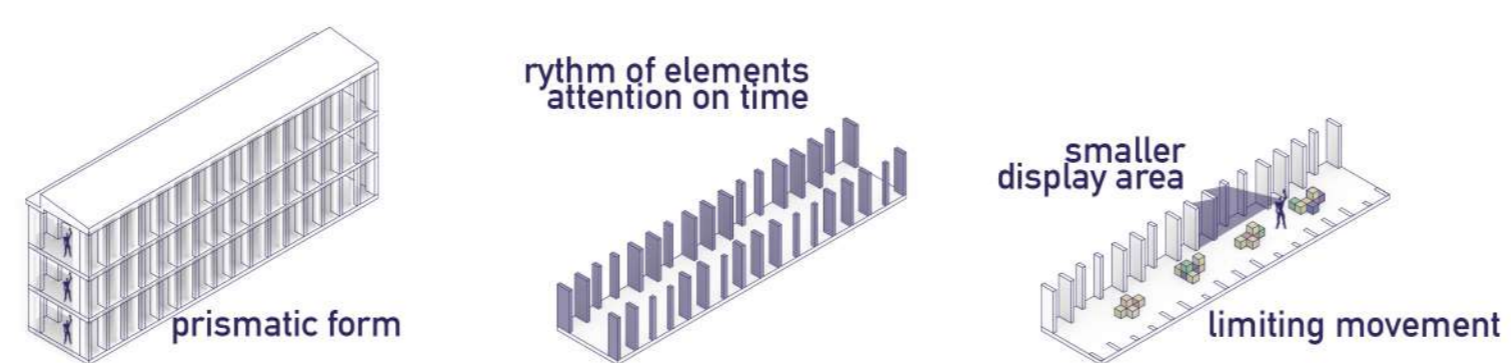
CLASSROOM



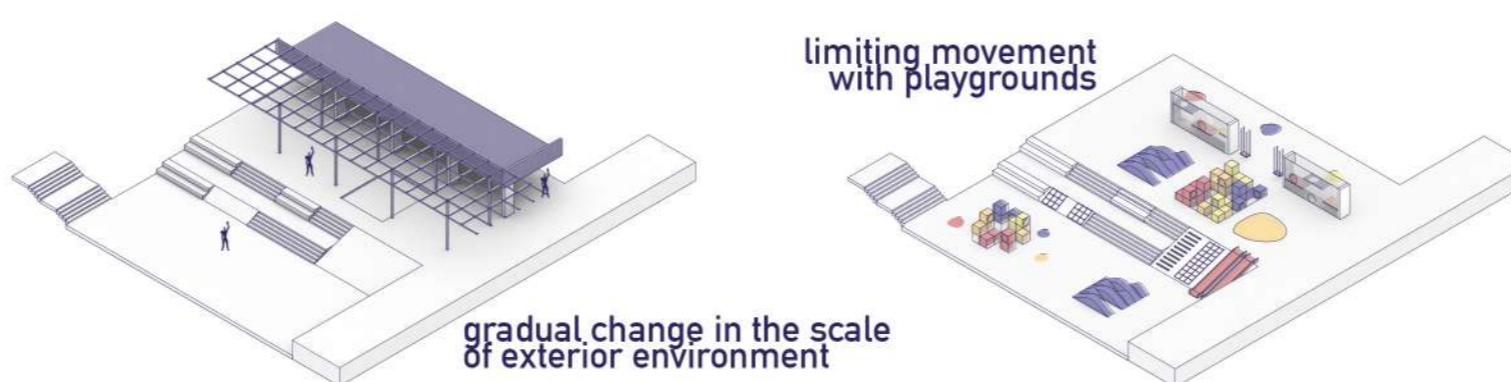
COMMON SPACE INTERIOR/EXTERIOR



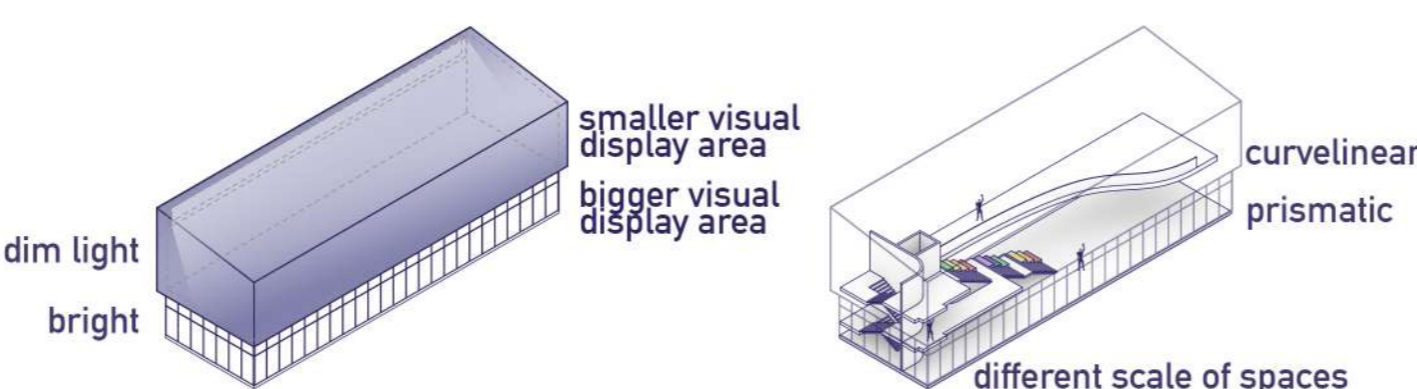
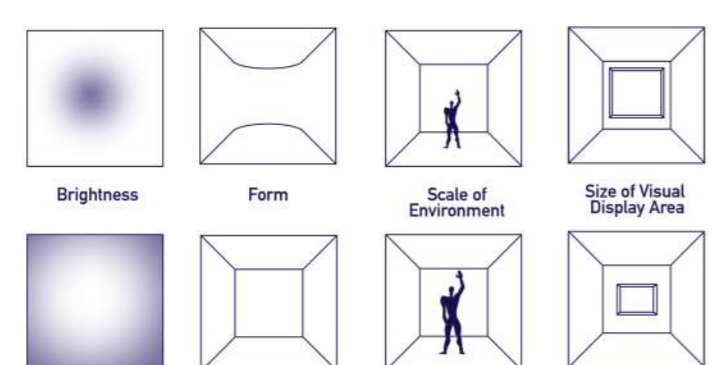
INTERIOR



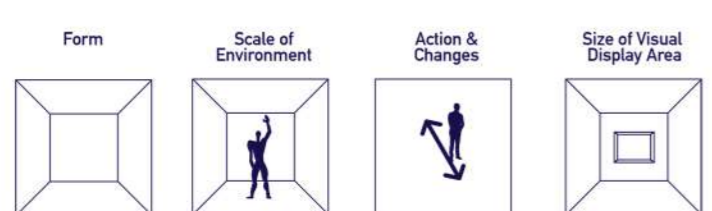
EXTERIOR



ENTRANCE HALL



CIRCULATION (VERTICAL)



CLASSROOM PROTOTYPE

	TRADITIONAL CLASSROOM	AIM	
DISPLAY DISTANCE			central, group study
DISPLAY AREA			bigger, smaller
BRIGHTNESS			dim, bright
FORM			angular, curvilinear
SCALE OF THE ENVIRONMENT			age 6-11, smaller, bigger, different roof levels, different roof levels



VIA MASSAUA

VIALE ERGISTO BEZZI

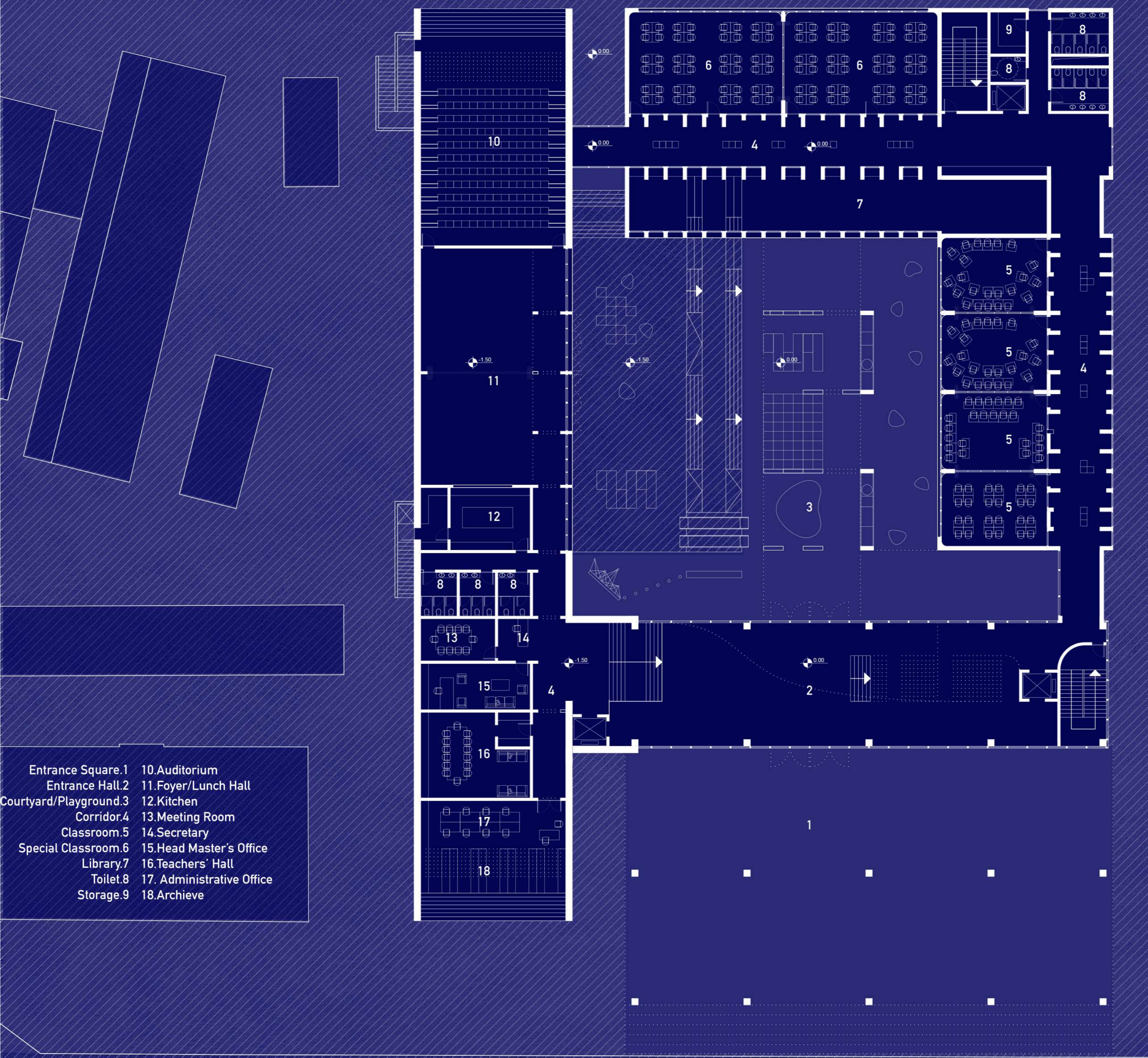
VIALE CATERINA DA FORLI

PIAZZALE TRIPOLI

SITE PLAN
SCALE 1/500



GROUND FLOOR PLAN +0.00



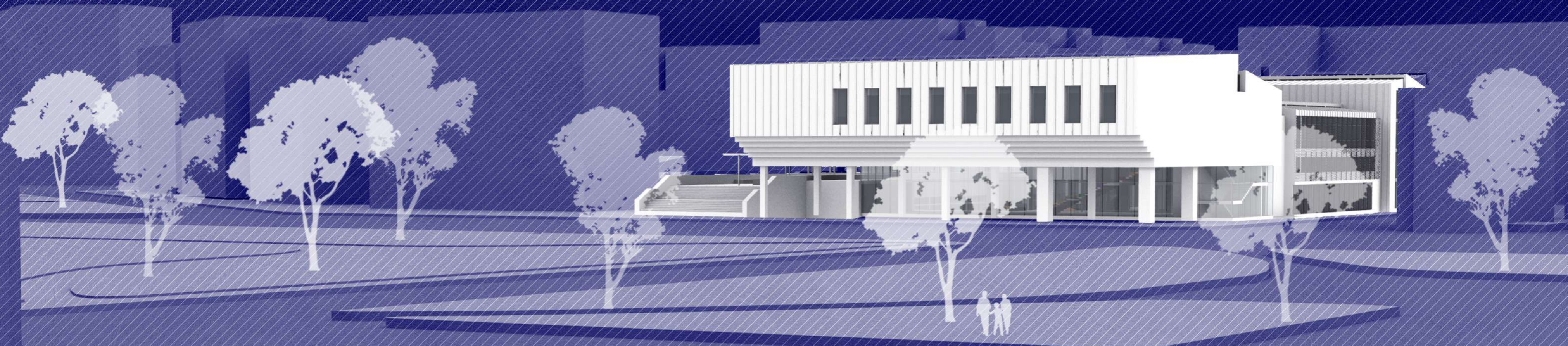
- Entrance Square.1
- Entrance Hall.2
- Courtyard/Playground.3
- Corridor.4
- Classroom.5
- Special Classroom.6
- Library.7
- Toilet.8
- Storage.9
- Auditorium.10
- Foyer/Lunch Hall.11
- Kitchen.12
- Meeting Room.13
- Secretary.14
- Head Master's Office.15
- Teachers' Hall.16
- Administrative Office.17
- Archive.18

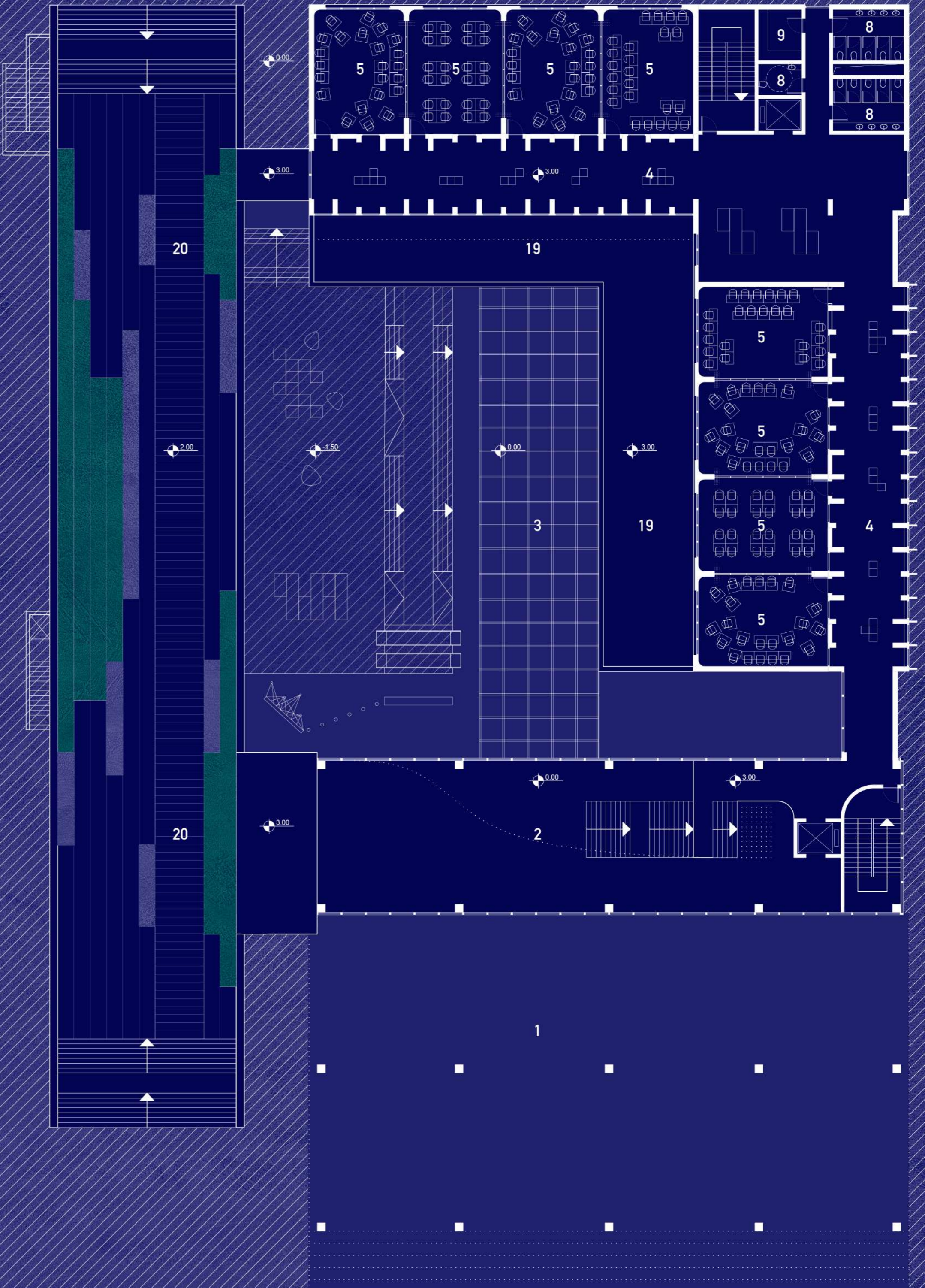
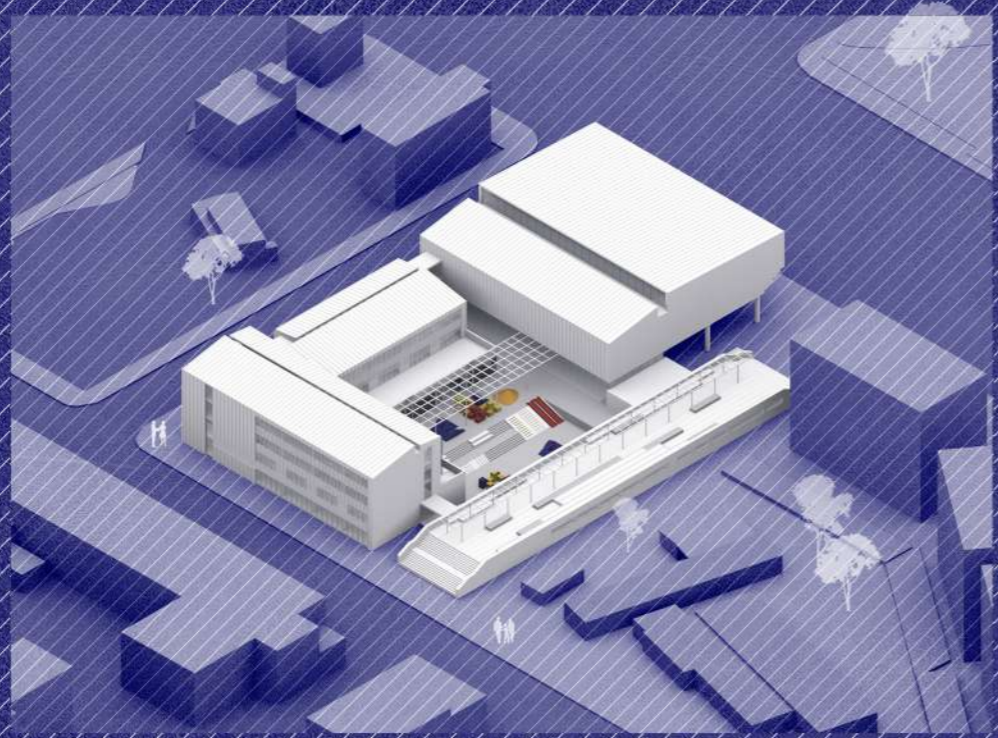
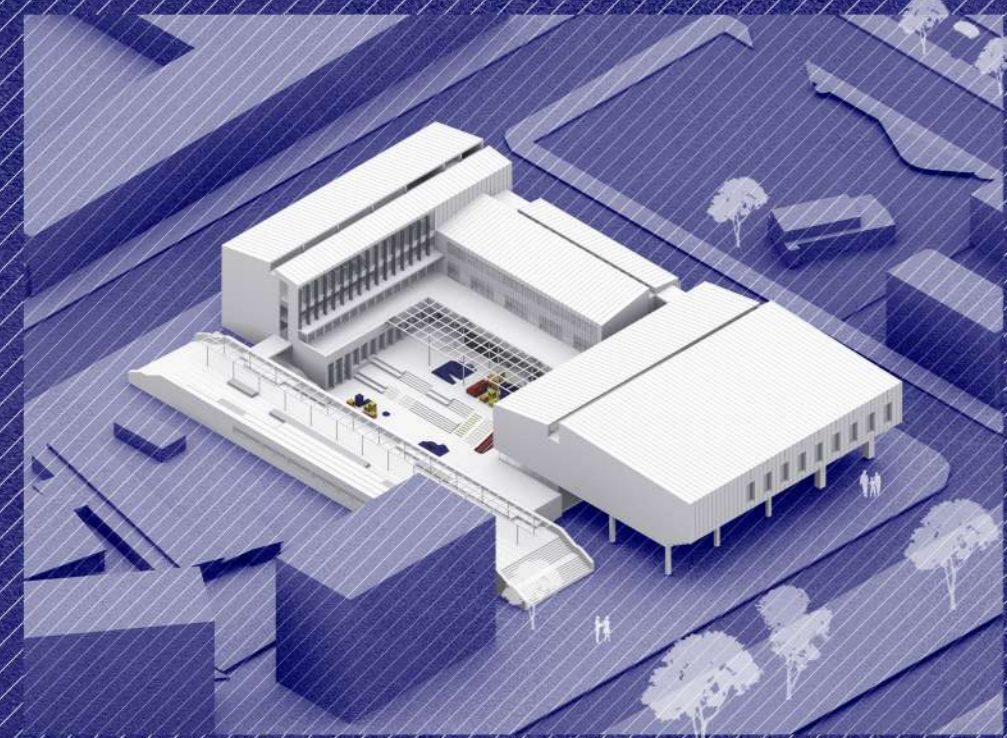
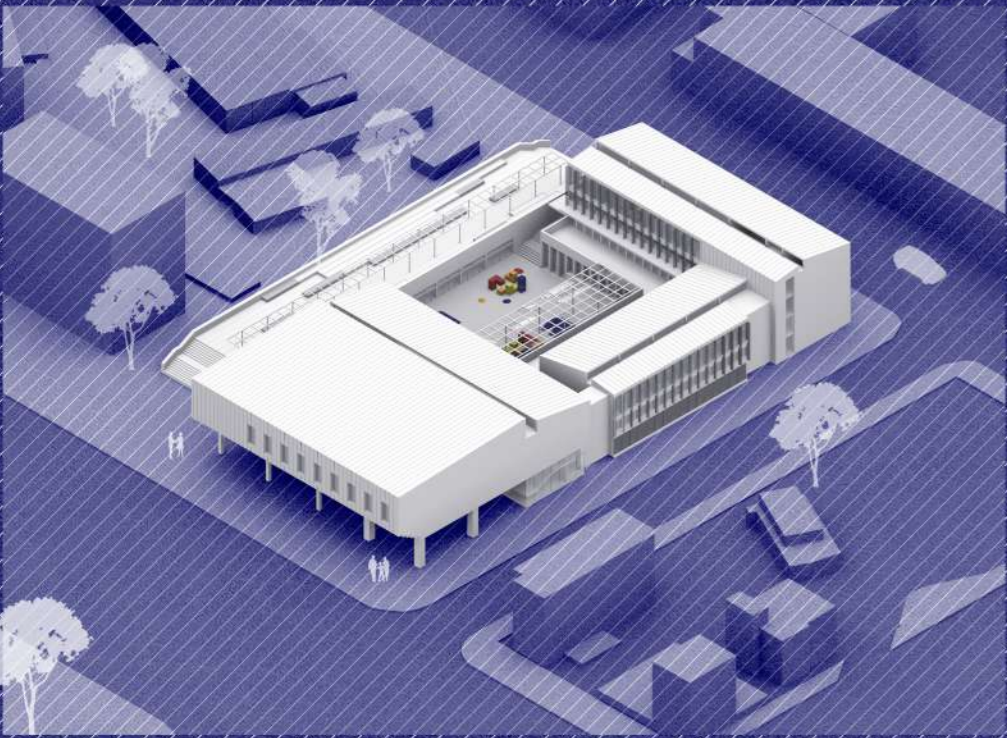
SCALE 1/200

NORTH-EAST ELEVATION



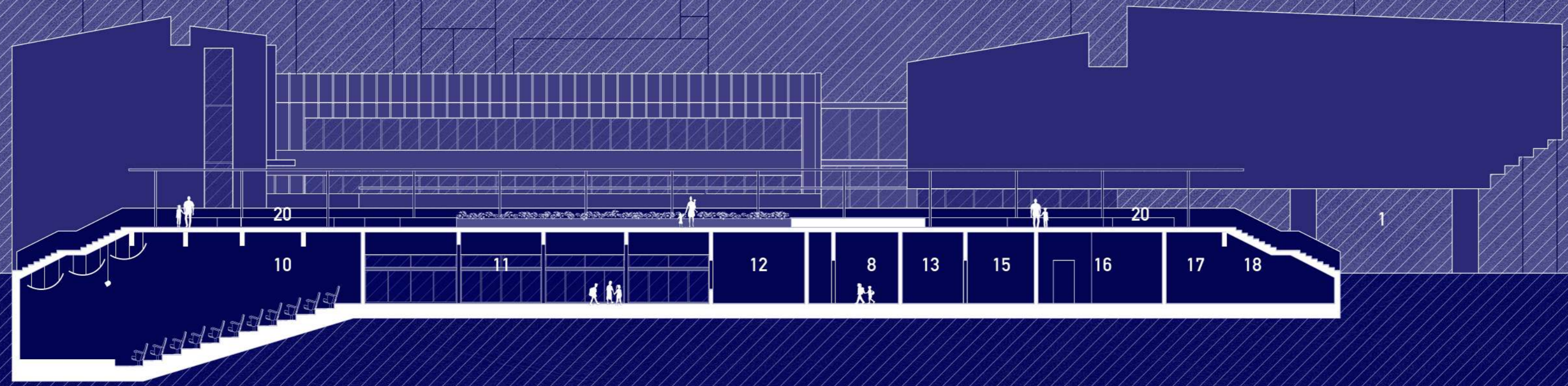
SCALE 1/200





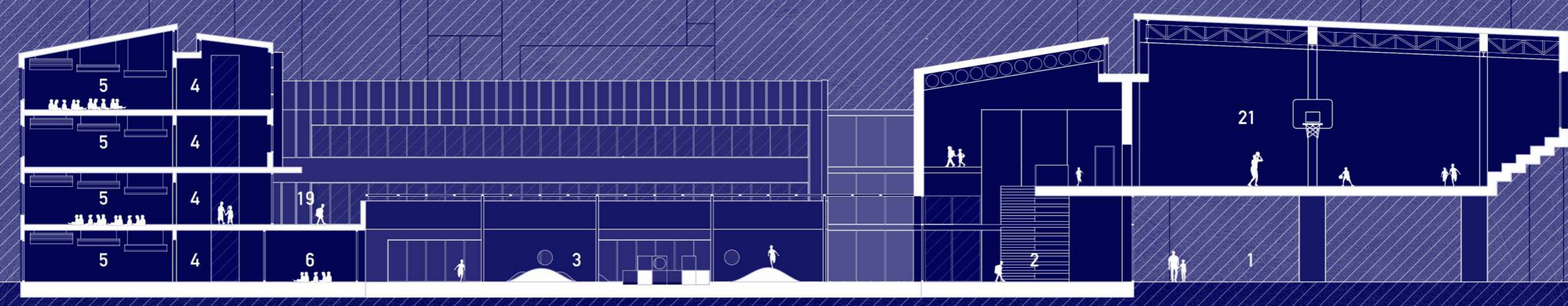
- Entrance Square.1
 - Entrance Hall.2
 - Courtyard/Playground.3
 - Corridor.4
 - Classroom.5
 - Toilets.8
 - Storage.9
 - Terrace.19
 - Public Pass.20
- SCALE 1/200

SECTION A-A'



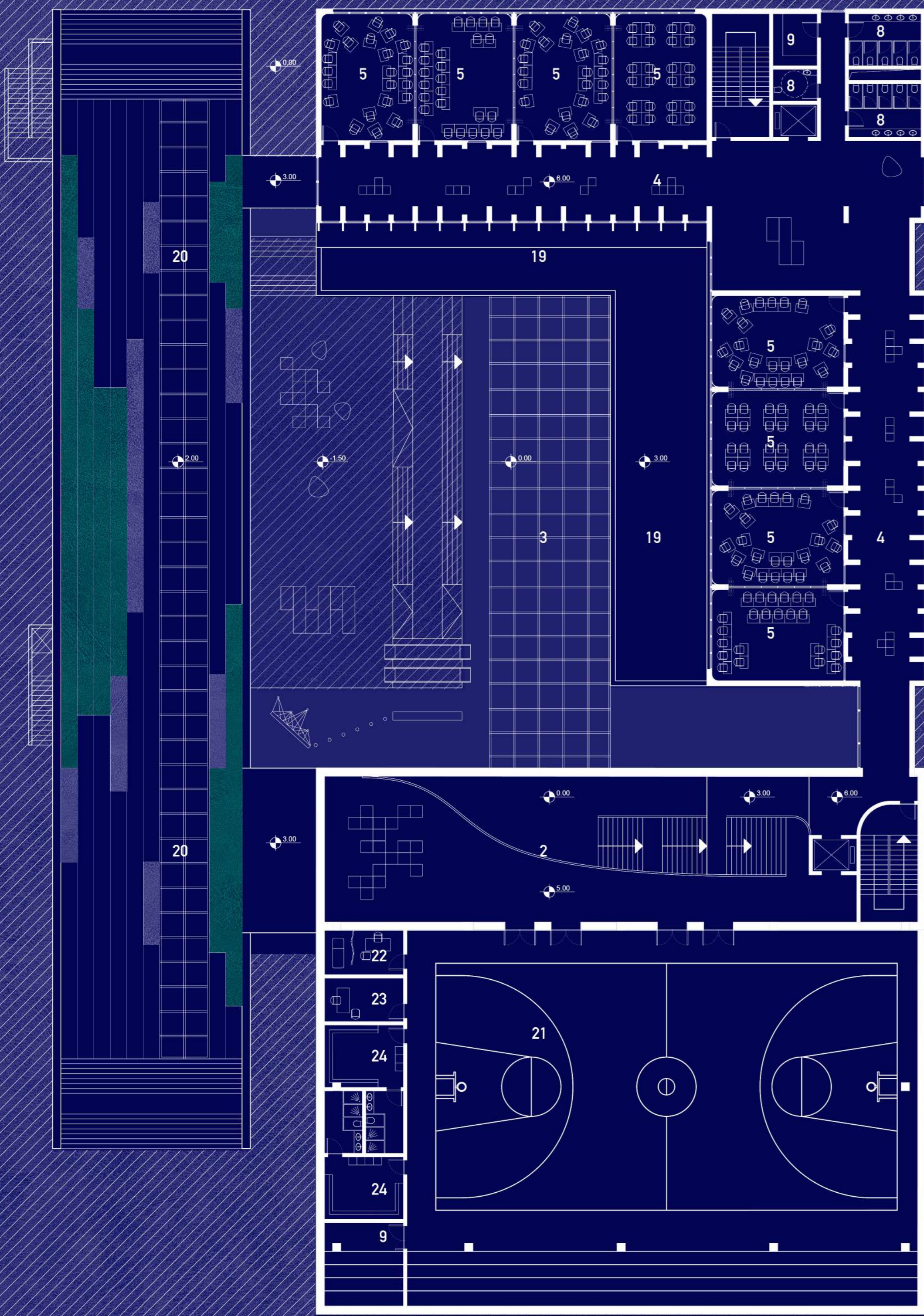
SCALE 1/200

SECTION B-B'



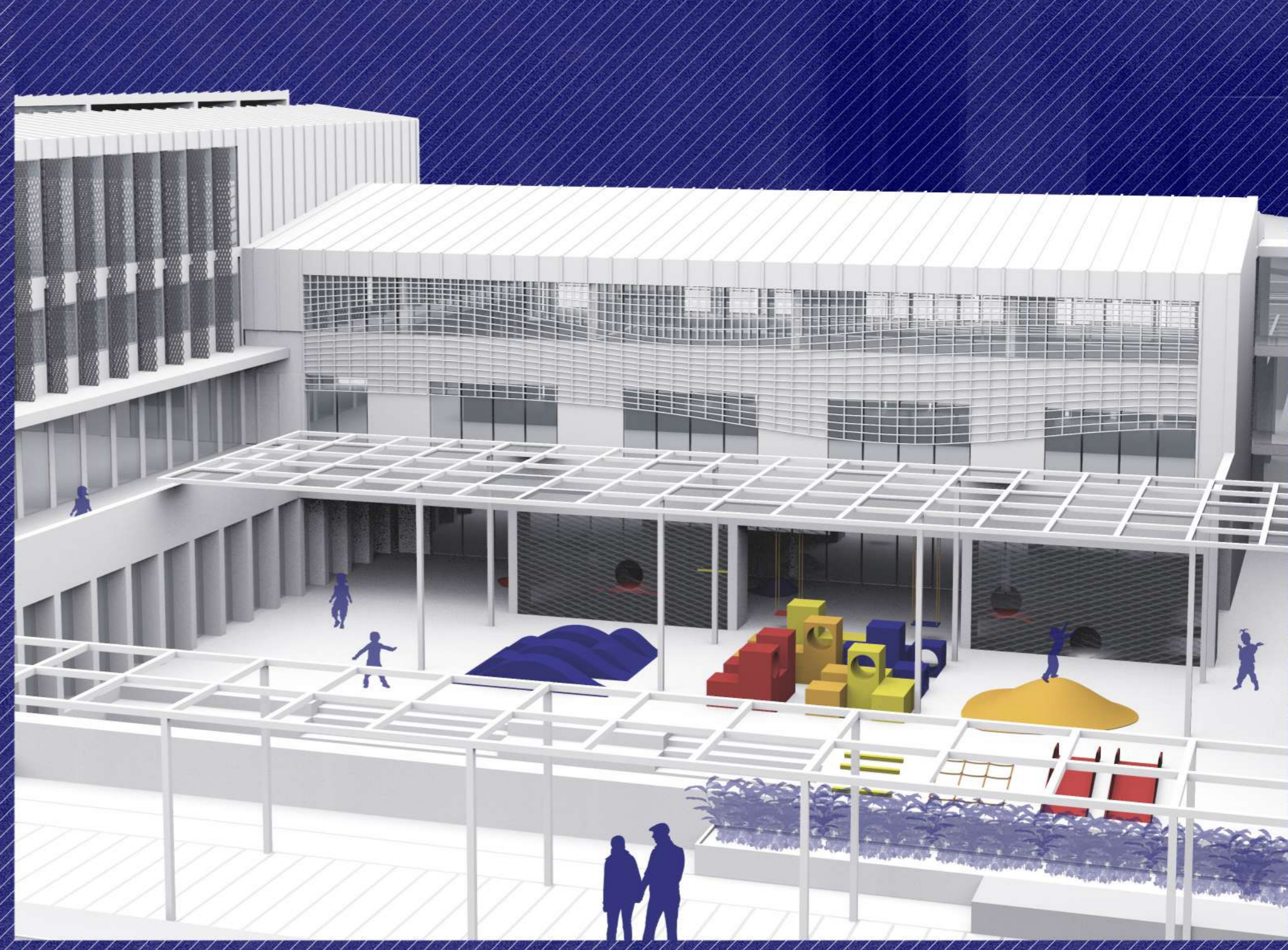
SCALE 1/200

SECOND FLOOR PLAN +6.00

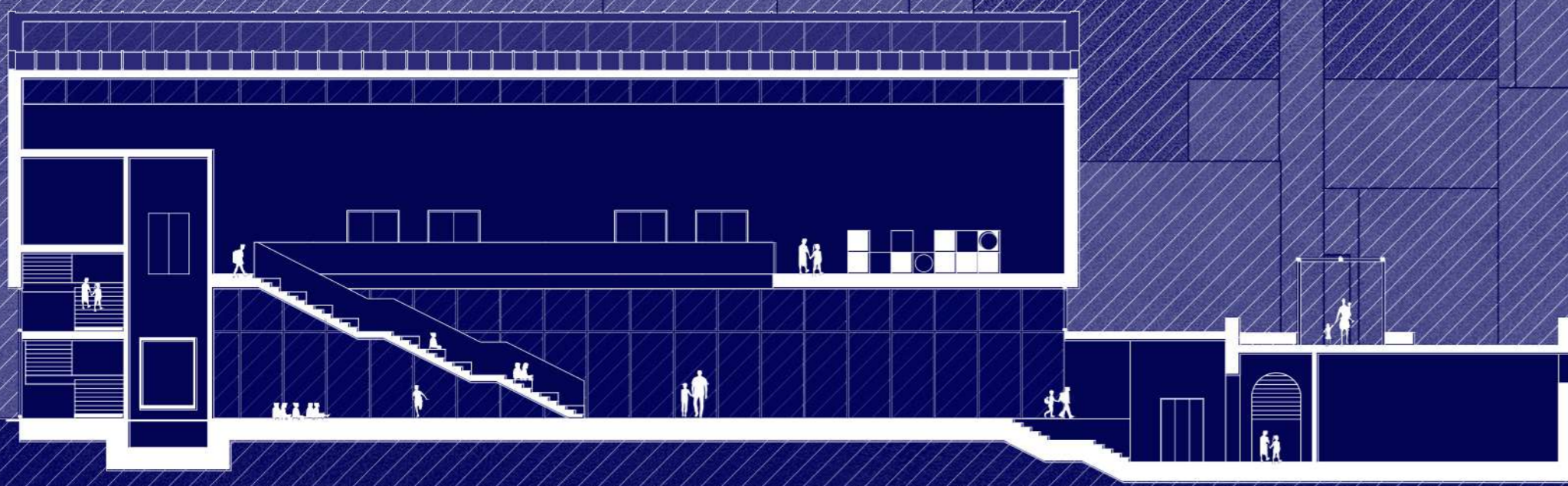


- Entrance Square.1
- Entrance Hall.2
- Courtyard/Playground.3
- Corridor.4
- Classroom.5
- Toilet.8
- Storage.9
- 19.Terrace
- 20.Public Pass
- 21.Gymnasium
- 22.Infirmary
- 23.Coach's Room
- 24.Dressing Room

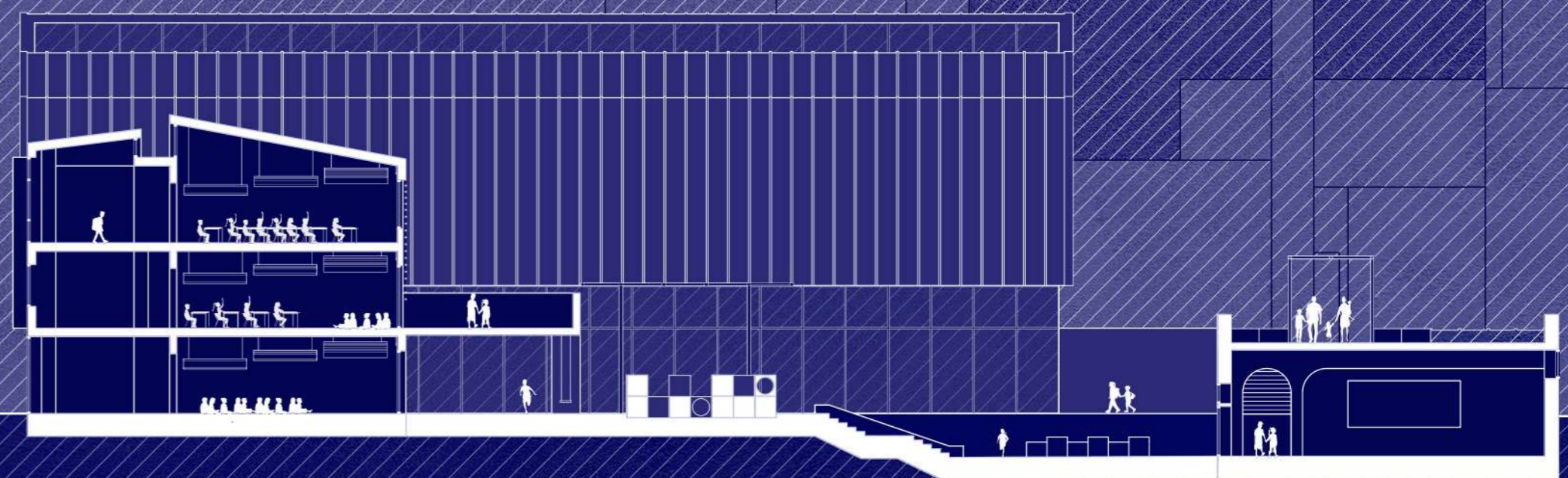
SCALE 1/200



SECTION C-C'

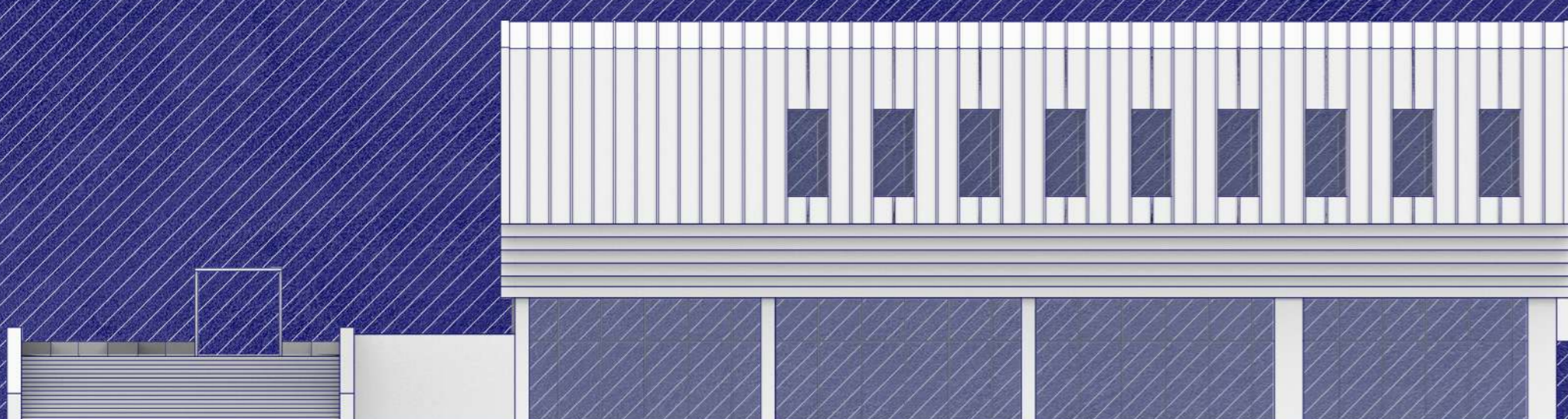


SECTION D-D'

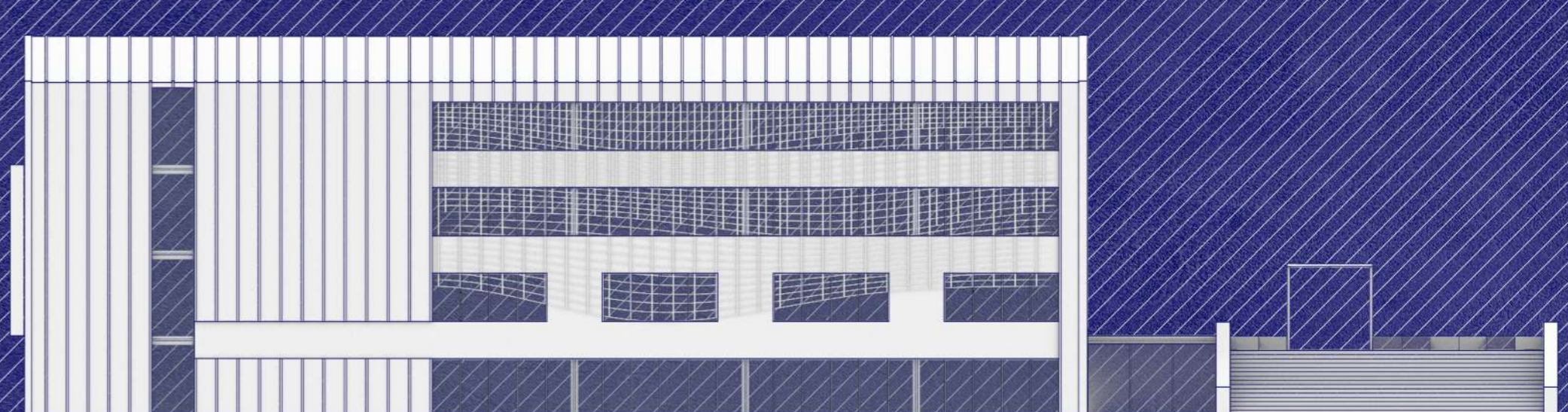


SCALE 1/200

SOUTH-EAST ELEVATION



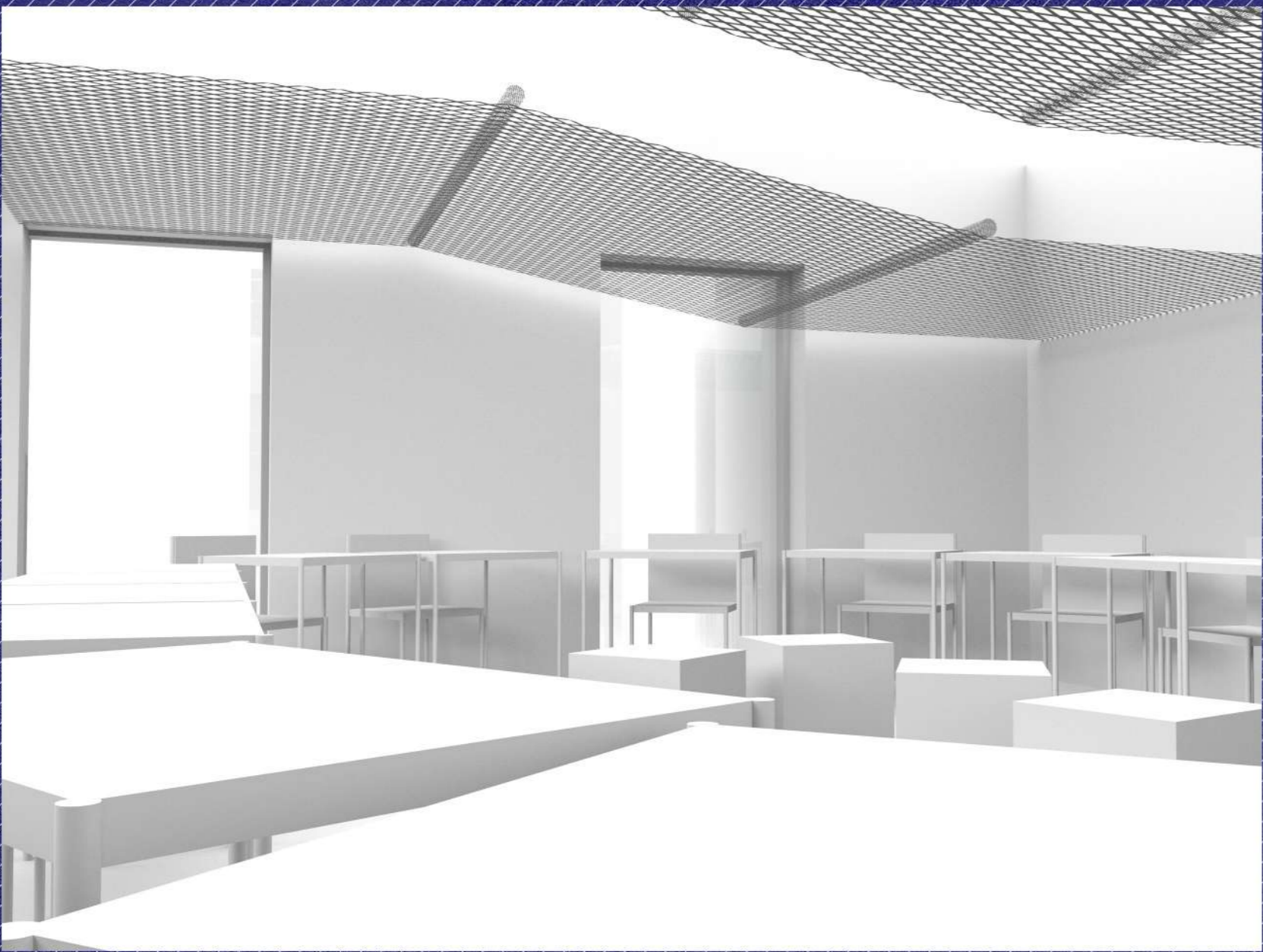
NORTH-WEST ELEVATION



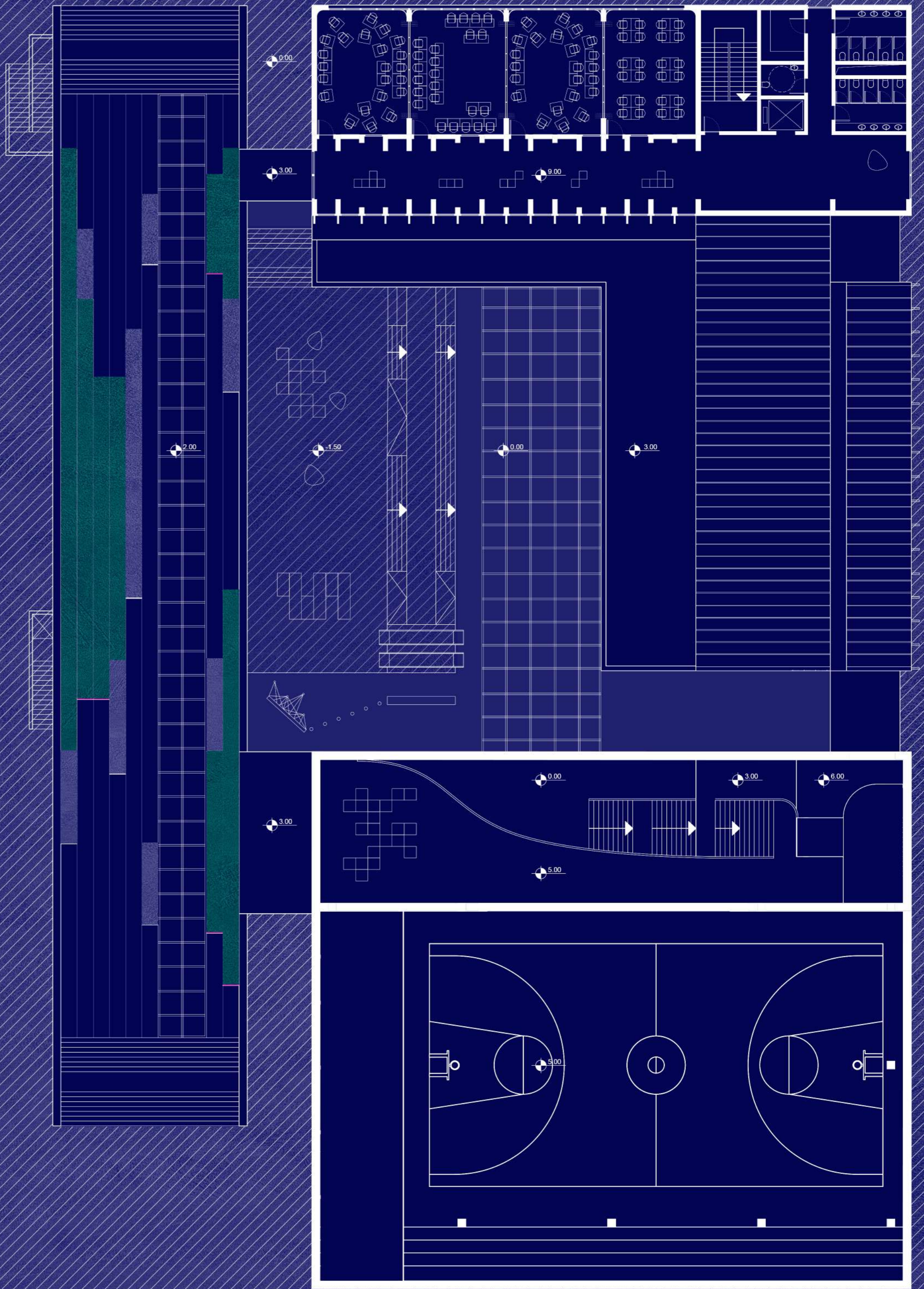
SCALE 1/200



CLASSROOM FOR FASTER TIME EXPERIENCE

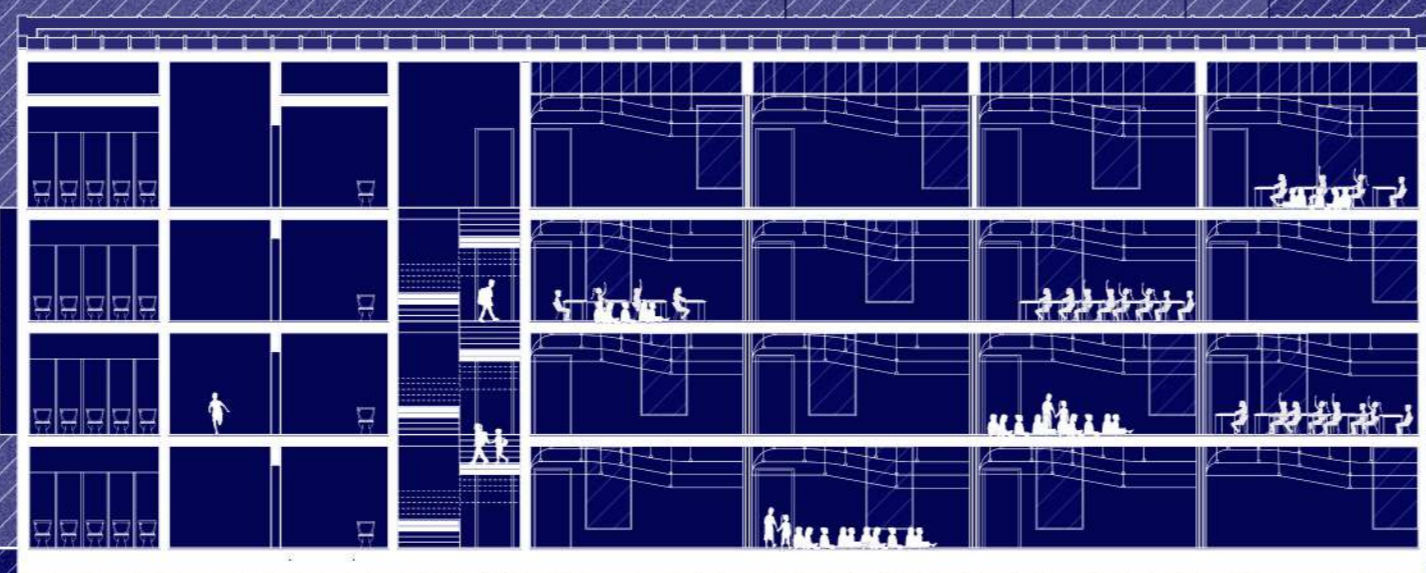


CLASSROOM FOR SLOWER TIME EXPERIENCE



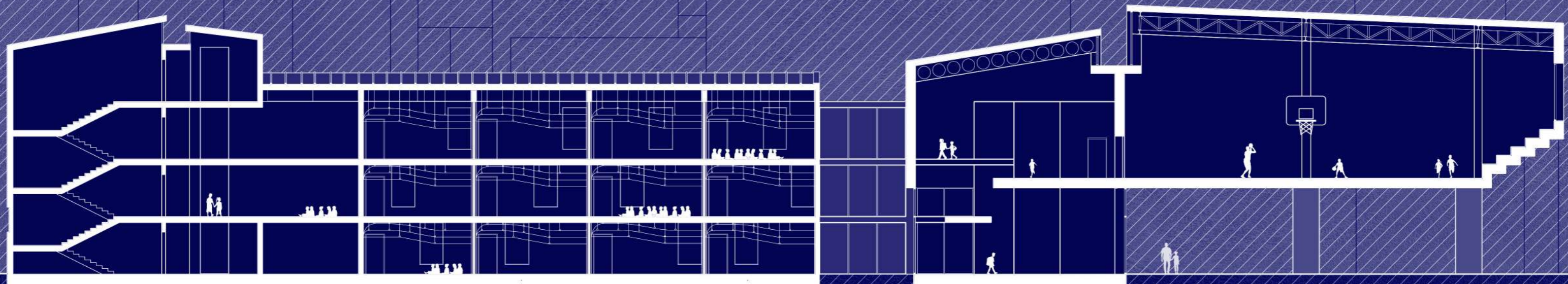
SCALE 1/200

SECTION E-E'



SCALE 1/200

SECTION F-F'



SCALE 1/200