

WHY

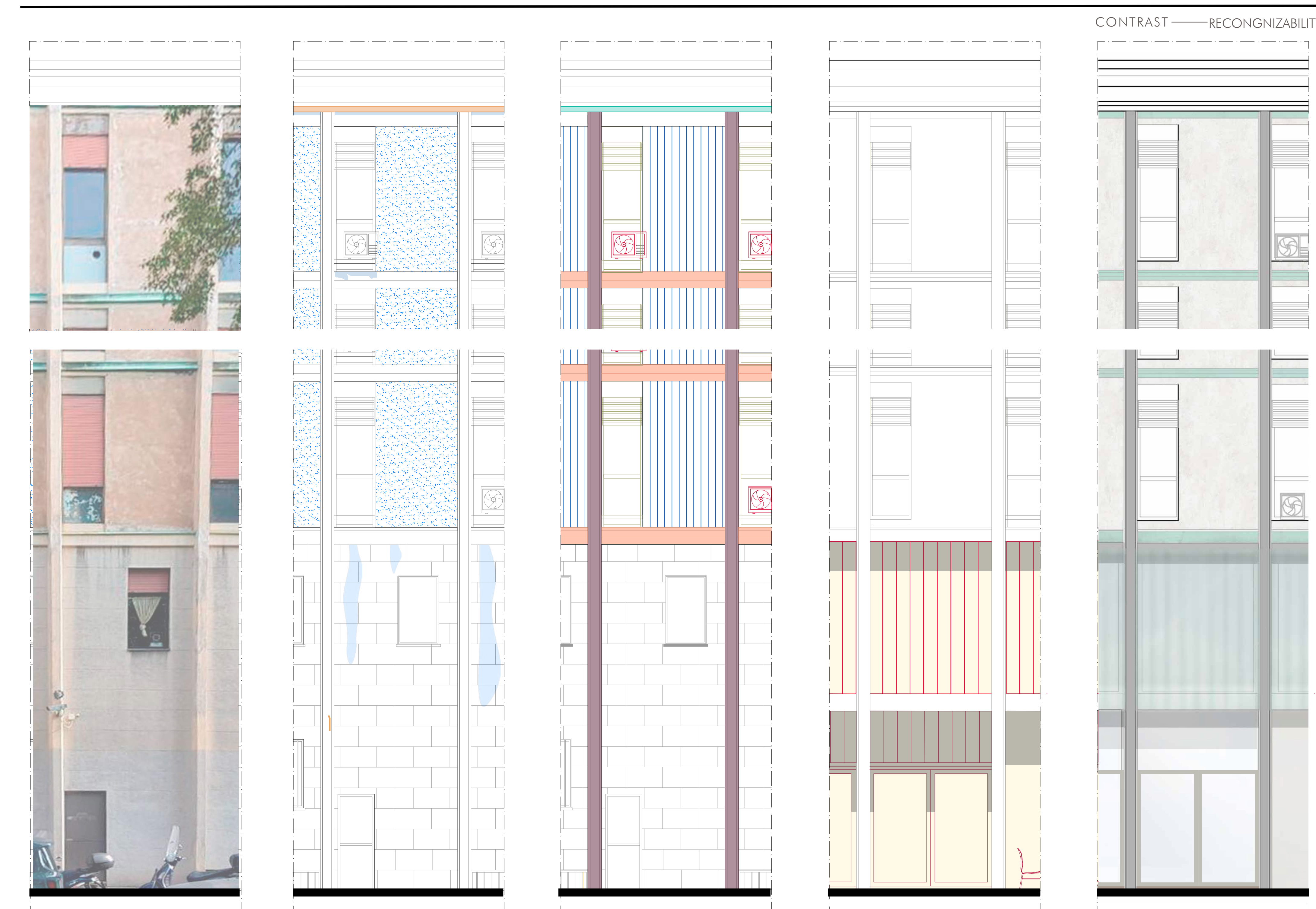
- Realize the connection in between the new volumes and the old volumes;
- Underline and valorize the concrete frame typology of the Convitto; Revitalize Piazza Umanitaria with an exterior open air loggia for the Cafeteria at the ground floor.
- Optimization of the Window frames, so as enhance the energetic performance of the Convitto's envelope;
- Removal of any potentially deteriorating components to restore the original appearance of some of the surface finishing which are left untouched in the conservation project.
- Ensure the integrity and stability of the building's structural system.

HOW

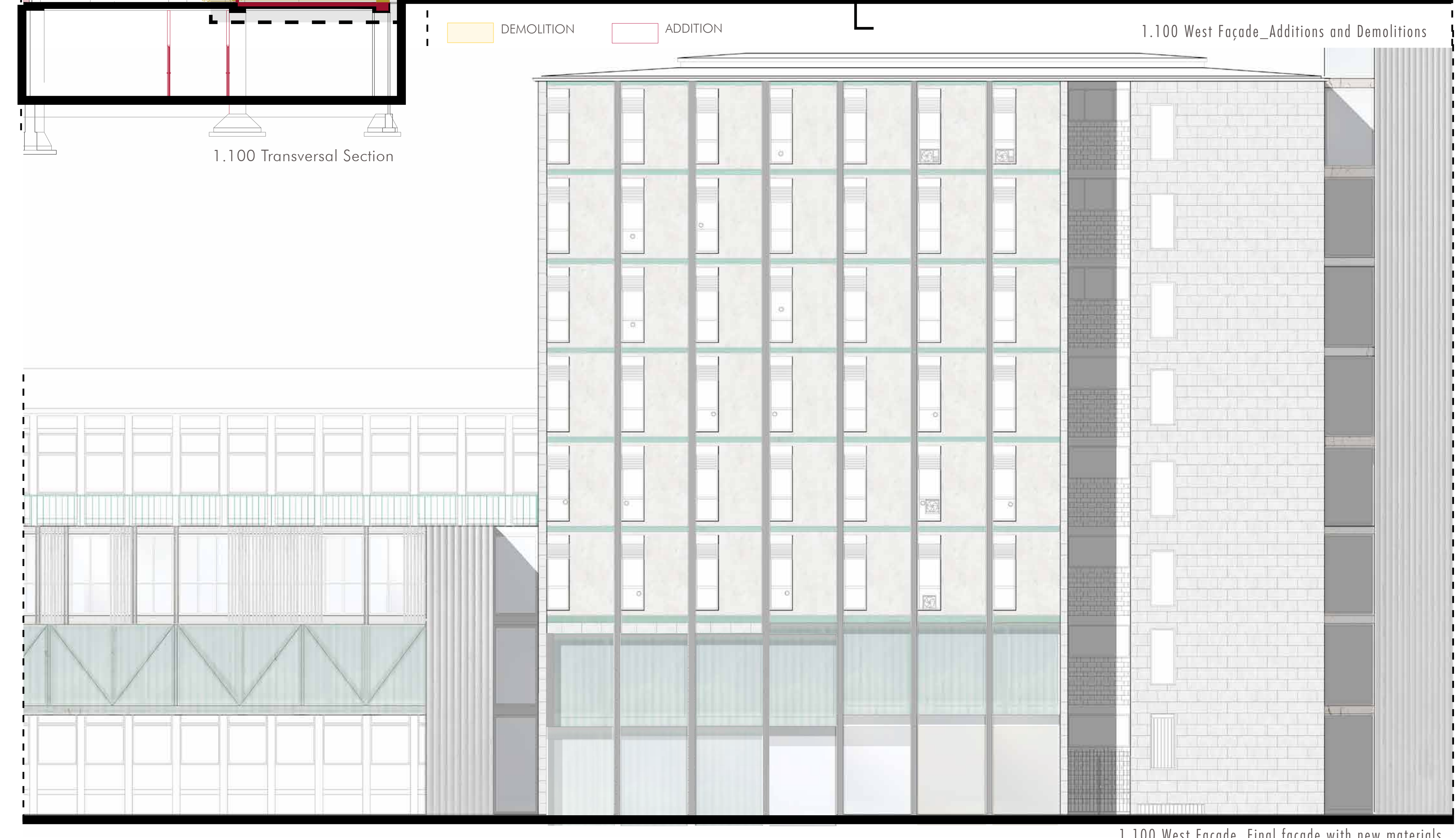
- Demolition of the Convitto's external envelope in some localized portions;
- Exposition of Structural concrete frame and demolition of the Infill exterior walls of West façade, facing Via Daverio and Piazza Umanitaria.
- Substitution of the glass panes and restoration of the Iron window sashes;
- Cleaning of the relevant soiling quantities from the original surface finishing; Consolidation of Plaster of infill panels on East and West façades; Refurbishment of the Roof: fix the water drainage system, seal the existing cracks with cement mortar, integrate with a new external finishing; Removal of any Biological colonization from the façade surfaces.
- After visual inspection and diagnostics: Seal superficial cracks with Cement mortar; Constant monitoring to prevent the potential risk of carbonation.

SEQUENCES:

-CURRENT SITUATION -DECAY PATTERN IDENTIFICATION - CONSERVATION INTERVENTIONS - DEMOLITIONS & ADDITIONS - RESULT



	ENCrustation - SOILING		CONSolidation AND CLEANING OF PLASTER		DEMOLITION
	DISCOLOURATION - BLEACH		CONSolidation OF ROOF EAVES		ADDITION
	CRACKS		WASHING AND GENTLE WET-SAND BLASTING		
			CLEANING OF SOILING AND APPLICATION OF PROTECTIVE COATING		
			CLEANING OF YELLOW-ISH PAINT AND CONSOLIDATION		
			SUBSTITUTION OF WINDOW FRAMES		
			REMOVAL OF OLD SERVICES FROM THE FAÇADE		



MATERIAL MAPPING

COMPOSITE MATERIALS

CONCRETE	PLASTERS		MORTARS			
	PLASTER 1	PLASTER 2	CEMENT-BASED MORTAR	GRANIGLIA MARTELLINATA	GRANIGLIA MARTELLINATA 2	GRANIGLIA MARTELLINATA 3

METALLIC MATERIALS

COPPER	IRON	ALUMINIUM	STEEL 3

CERAMIC MATERIALS

GLASS 1	GLASS 2	GLASS 4

DECAY MAPPING

MISSING PART - CHIPPING/LACUNA
 CRACKS
 ENCRUSTATION - SOILING
 DISCOLORATION - BLEACH
 DISCOLORATION - MOIST AREA
 ALGA
 PLANT

A WATER LEAKAGE CRACKS

B DEPOSIT

C DISCOLORATION & PEELING

D SOILING & CORROSION

E LOCAL CRACKS & CARBONATON RISK

F THERMAL EFFICIENCY

INTERVENTION MAPPING

1 Consolidation of Roof Eaves
 • Re-design of the rain-water drainage system, so as to fit also the old system with the one of the newly added volumes;
 • Consolidation on roof eaves via crack filling with cement mortar injection;
 • Coating of roof eaves with a new homogeneous layer of render as well as a protective coating.

2 Cleaning
 • Intense washing of the facade with a concentrated alkaline cleaner for quick removal of oily substances, greasy deposits from air pollution (Applied with a paint brush over the entire facade, and rinsed with plenty of water after being left to act);
 • Gentle Wet Sand Blasting of the façade.

3 Consolidation and Cleaning
 • Washing off the facade;
 • Gentle Wet Sand Blasting of the façade;
 • Cement mortar injections to the spider-webbing cracks on mortar;
 • Application of a silicate system protective product
 • Silicification on the coating material with the substrate

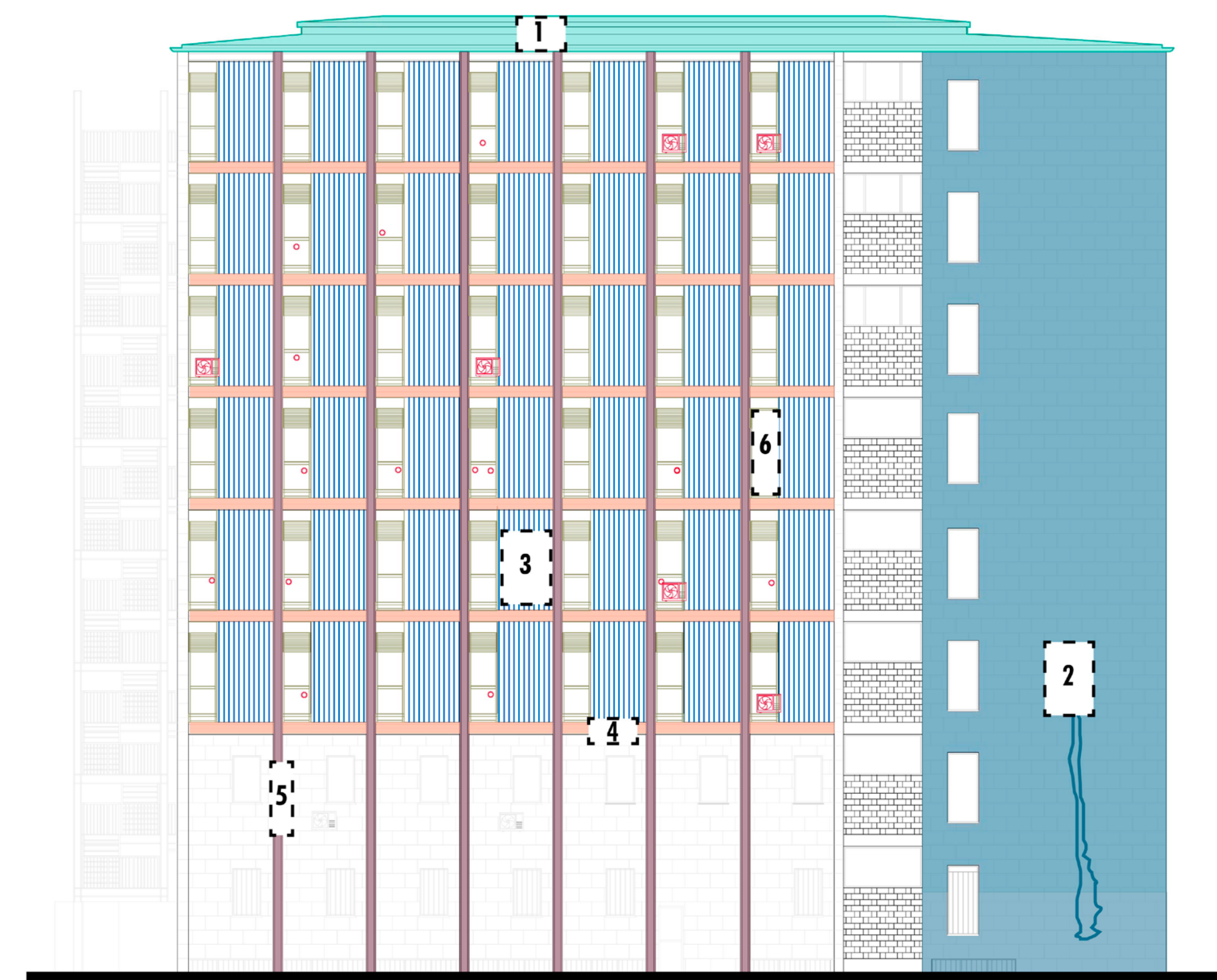
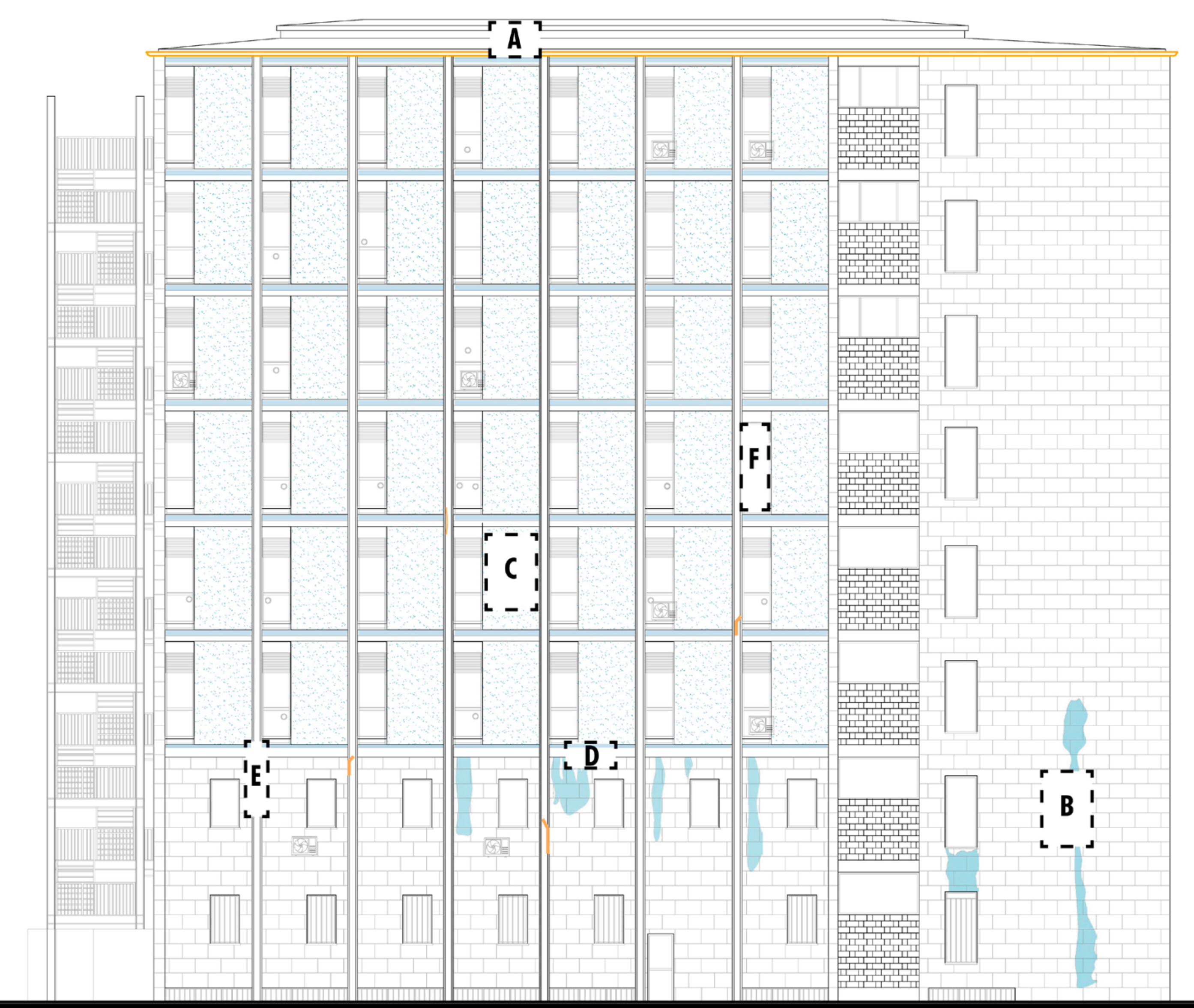
4 Gentle cleaning
 • low-pressure wet abrasive cleaning;
 • Protective coating for the patina to prevent tarnish and fading.

5 Consolidation and Cleaning
 • Gentle Wet Sand Blasting of the partial
 • yellowish painting layer on the pillars
 • cement mortar filling of the superficial cracks

6 Substitution of window frames

7 Contact with New Buildings
 • Demolition of localized portions;
 • Addition of a new internal finishing.

8 Removal of Old Services from the Facade



0 1 2 5 10

