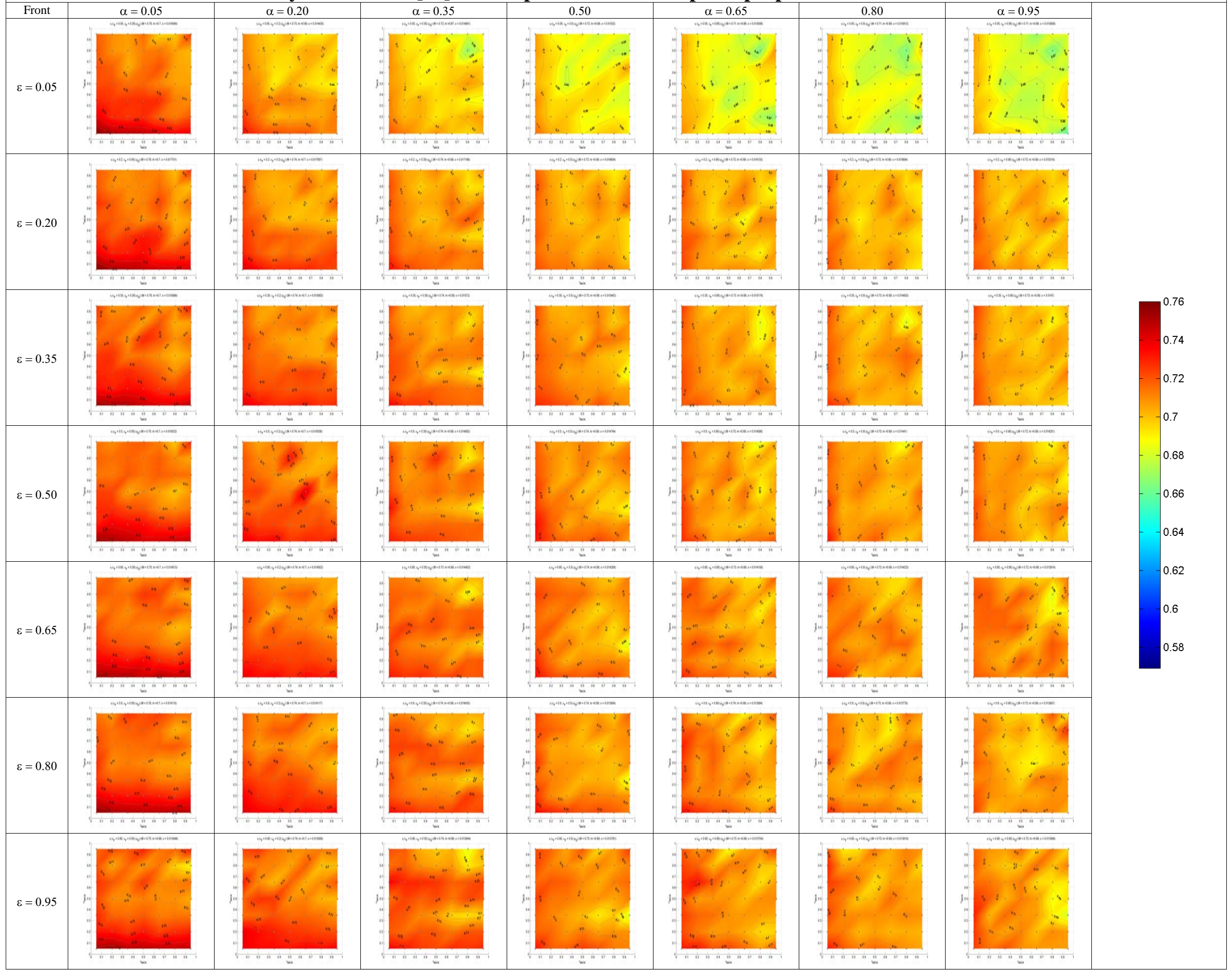
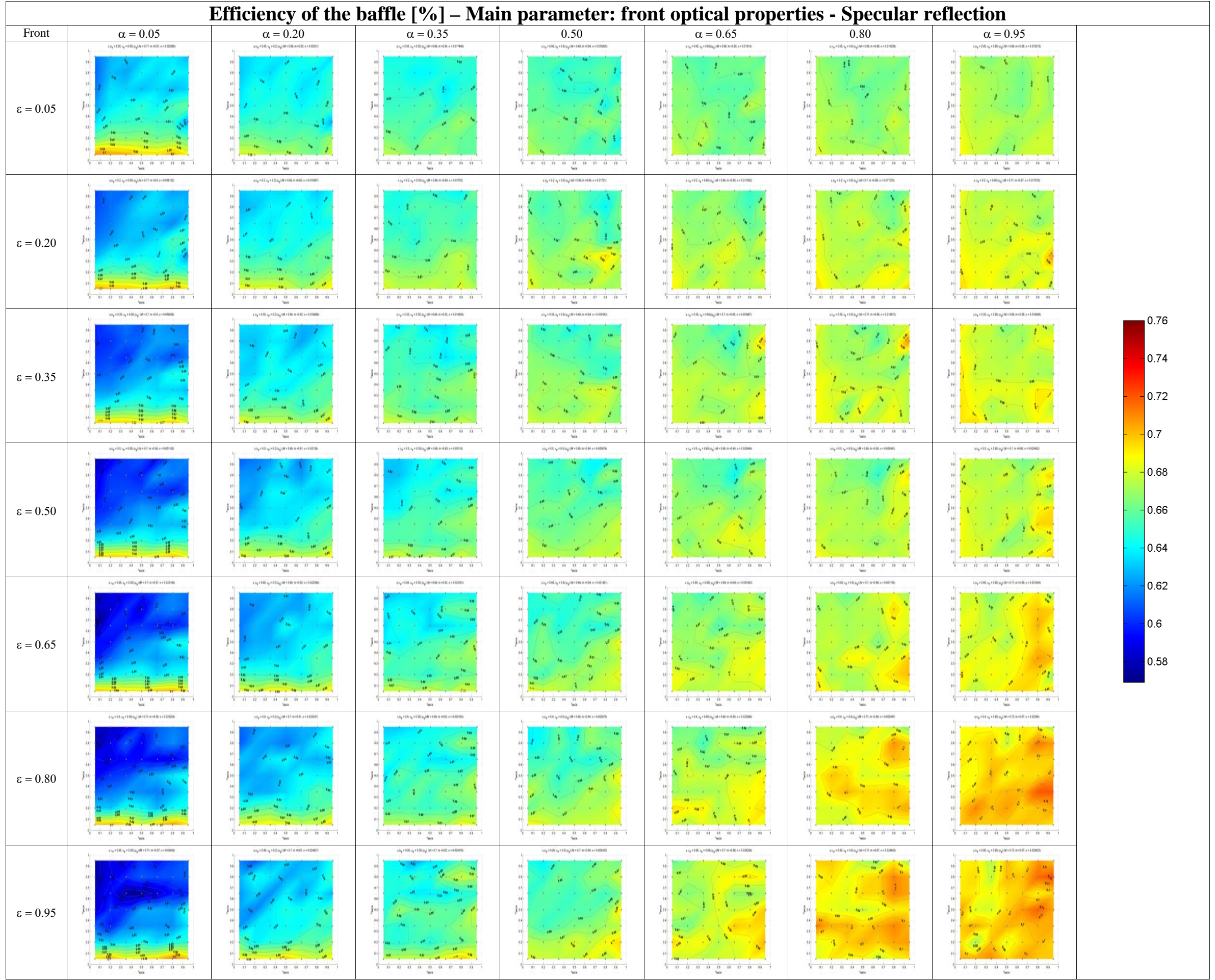


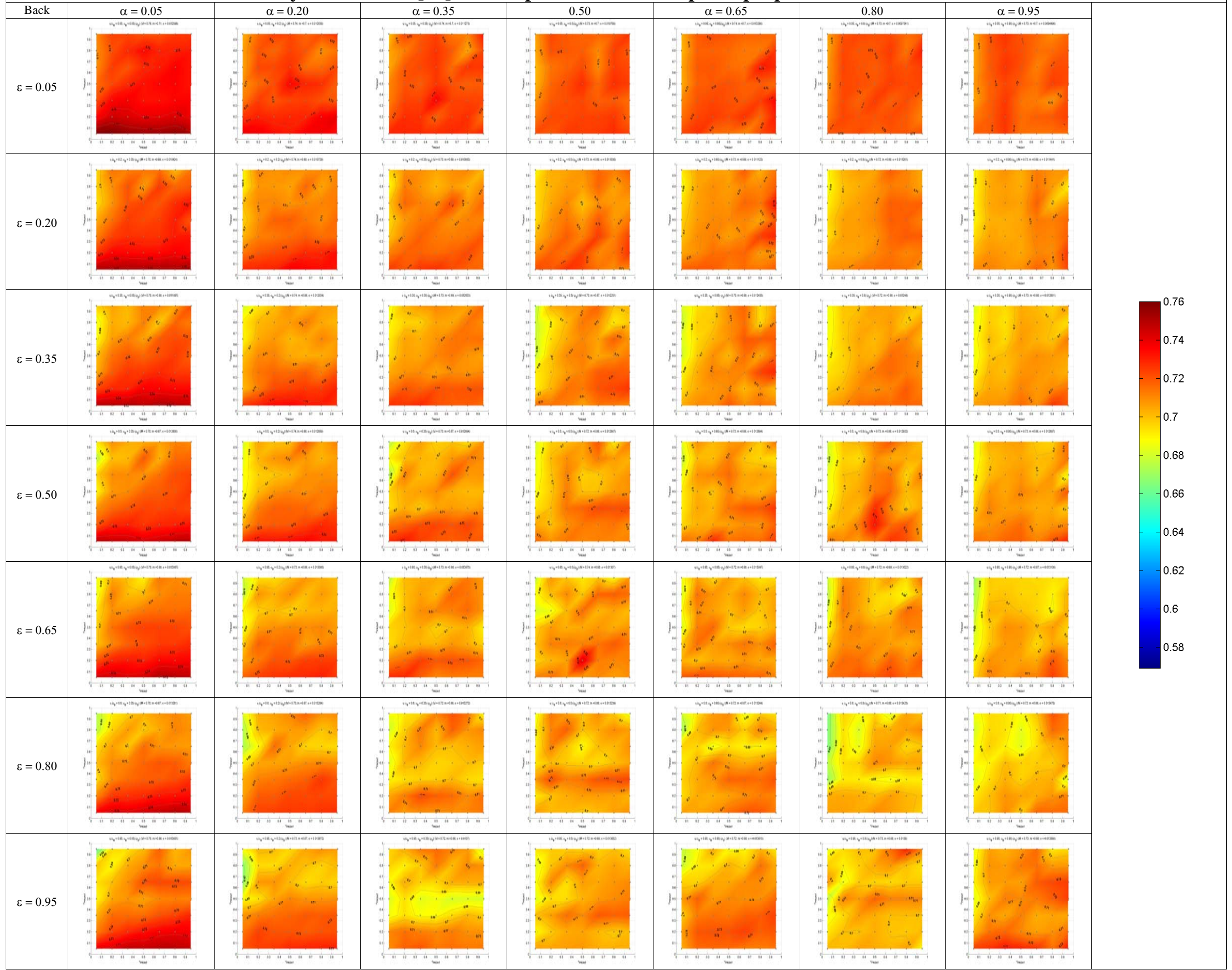
Efficiency of the baffle [%] – Main parameter: front optical properties - Diffusive reflection



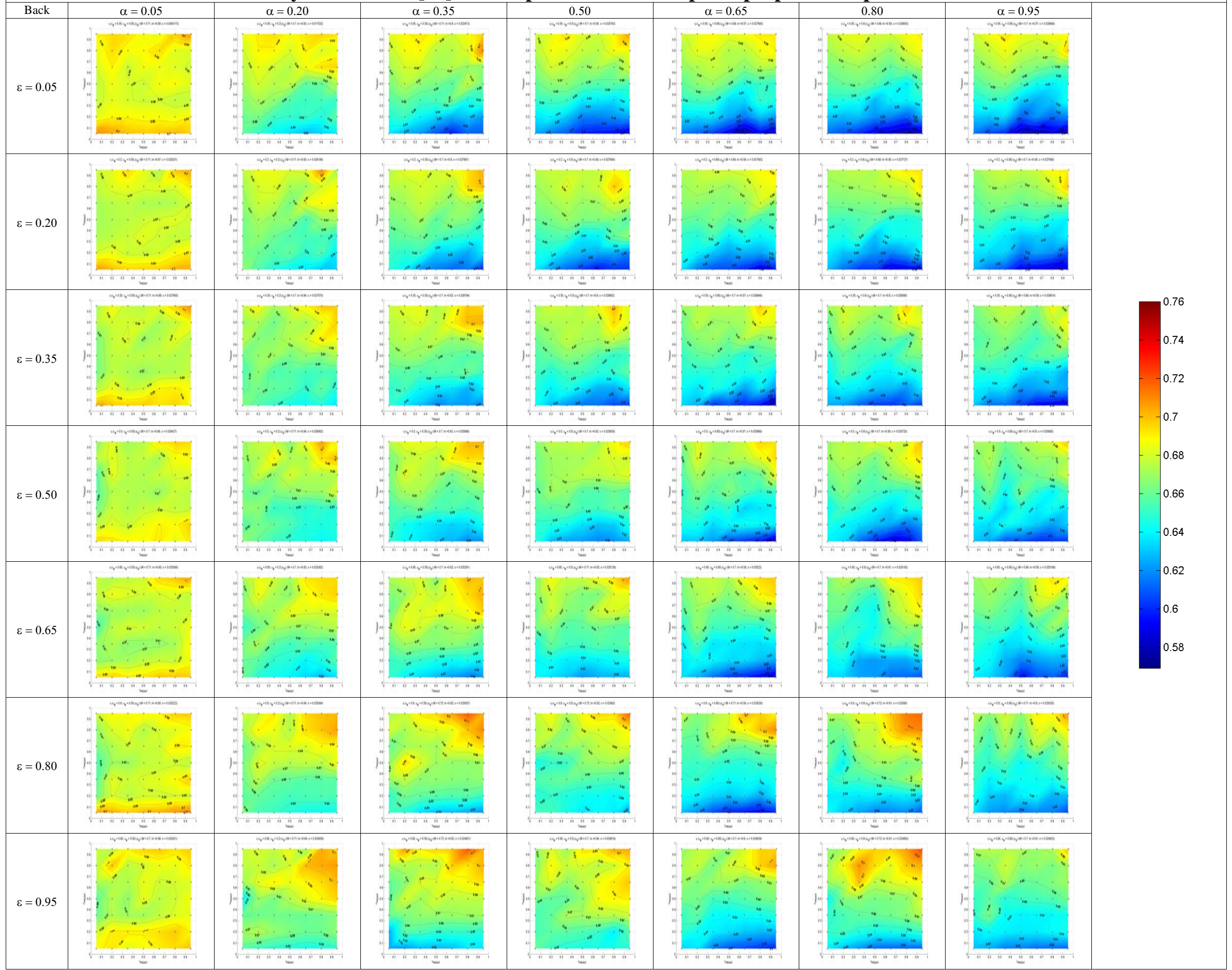
Efficiency of the baffle [%] – Main parameter: front optical properties - Specular reflection



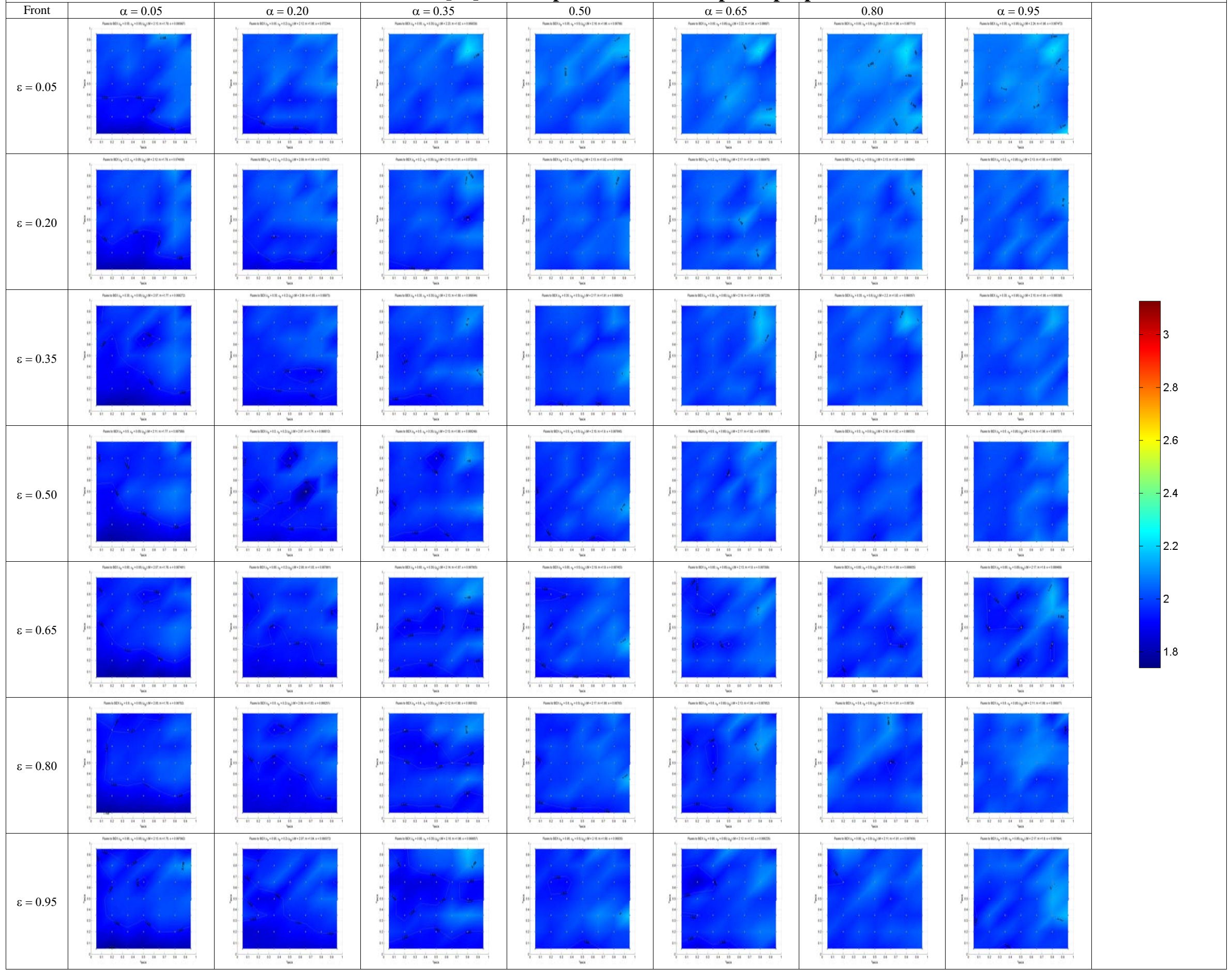
Efficiency of the baffle [%] – Main parameter: back optical properties - Diffusive reflection



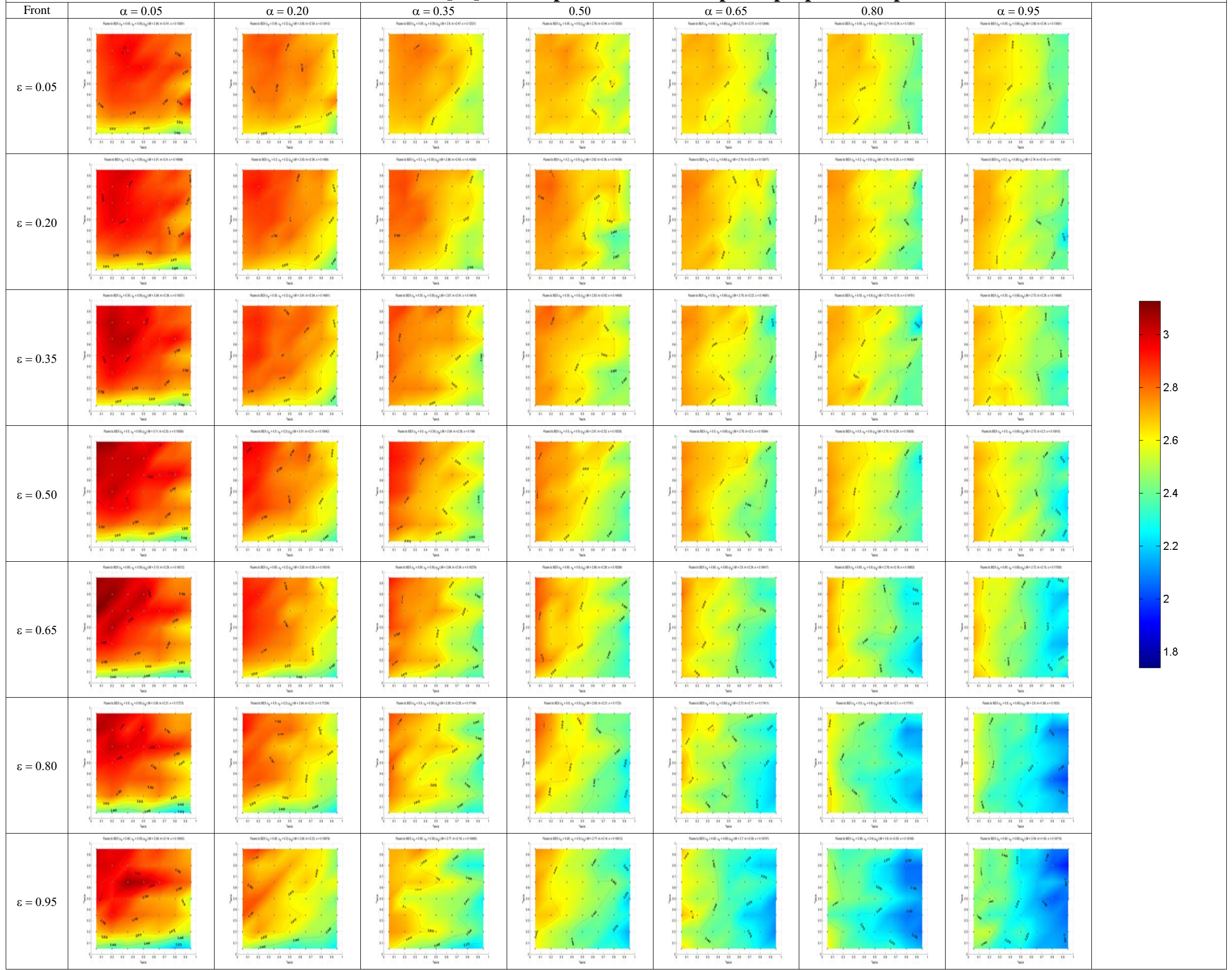
Efficiency of the baffle [%] – Main parameter: back optical properties - Specular reflection



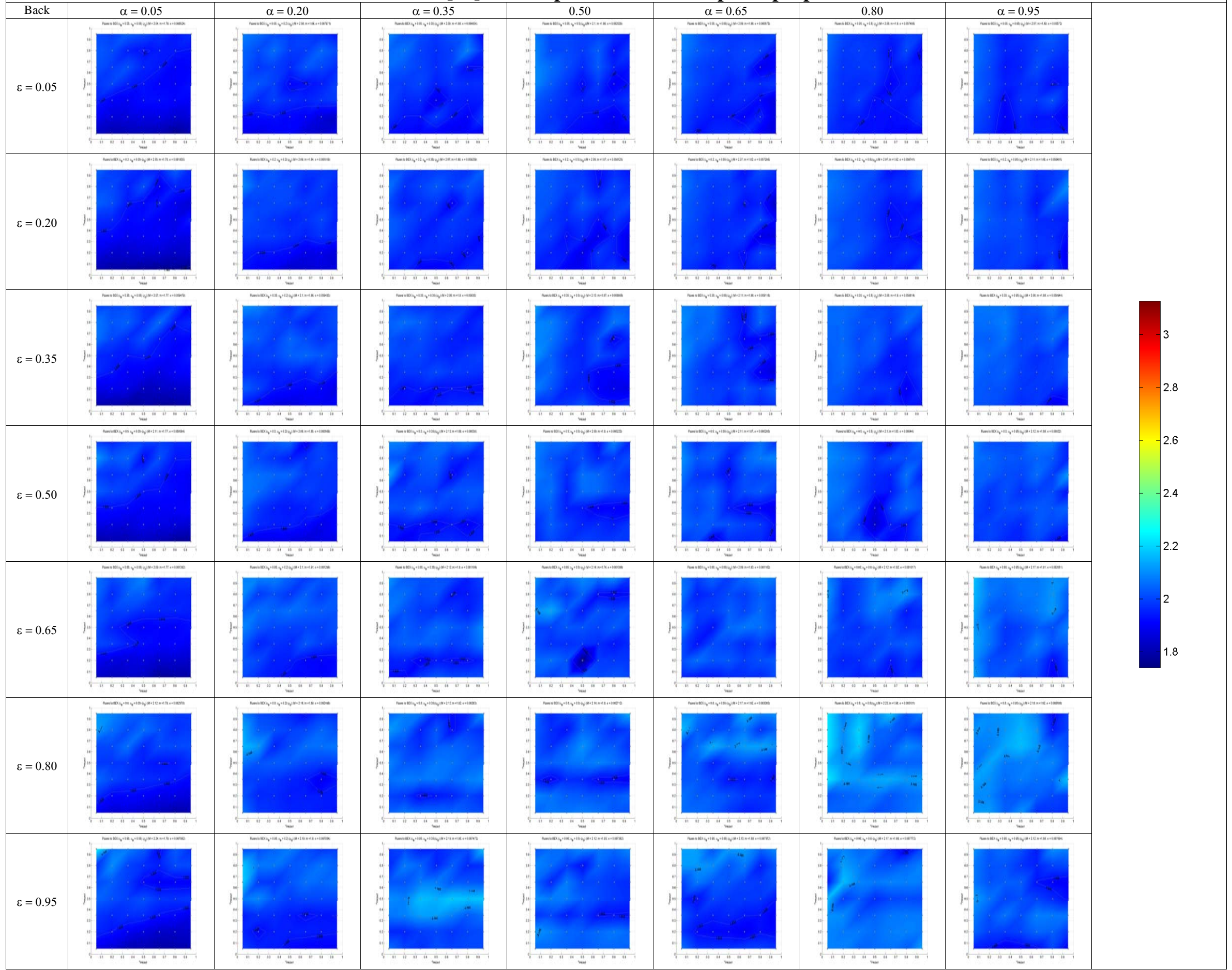
Heat fluxes to the instrument [W] – Main parameter: front optical properties - Diffusive reflection



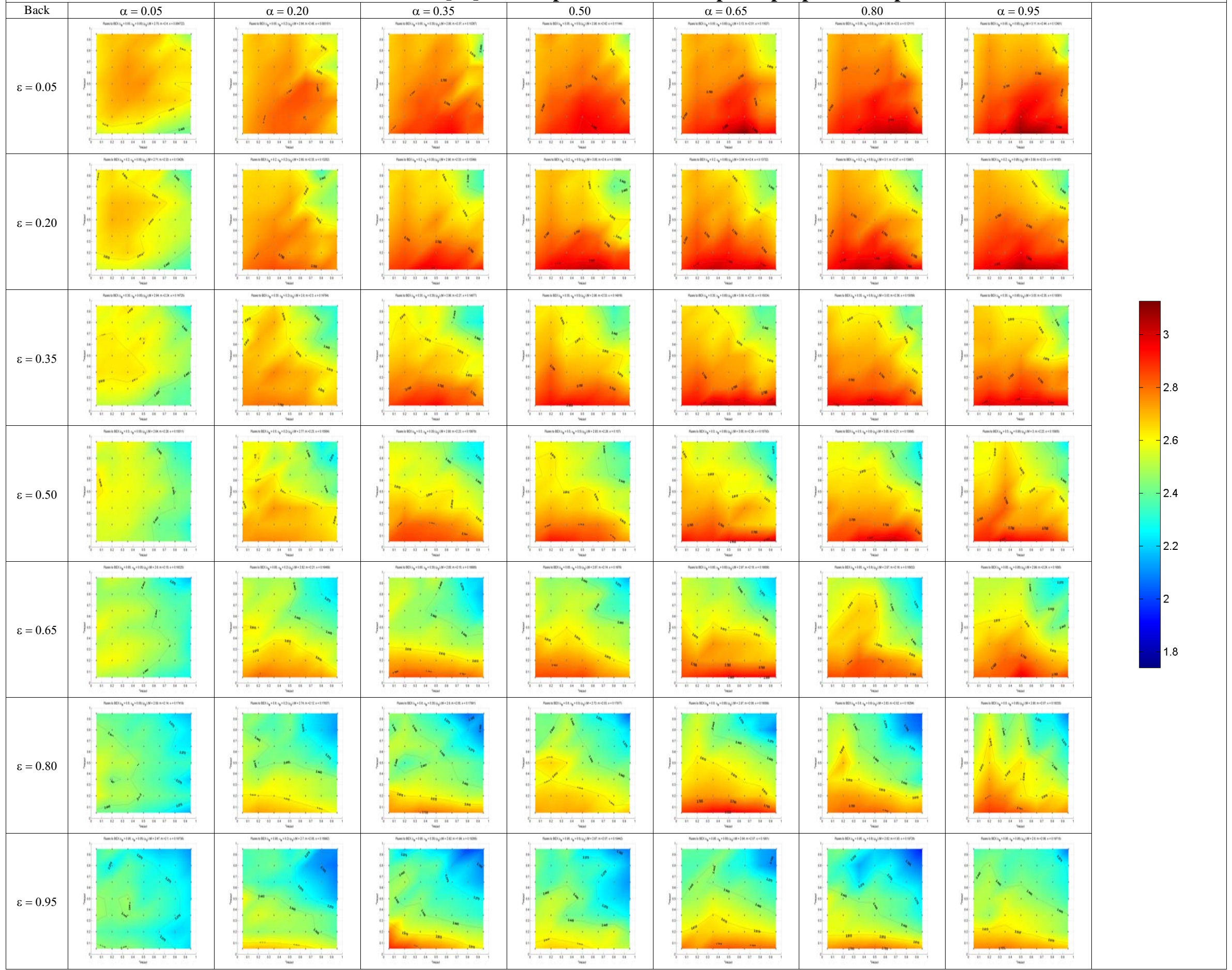
Heat fluxes to the instrument [W] – Main parameter: front optical properties - Specular reflection



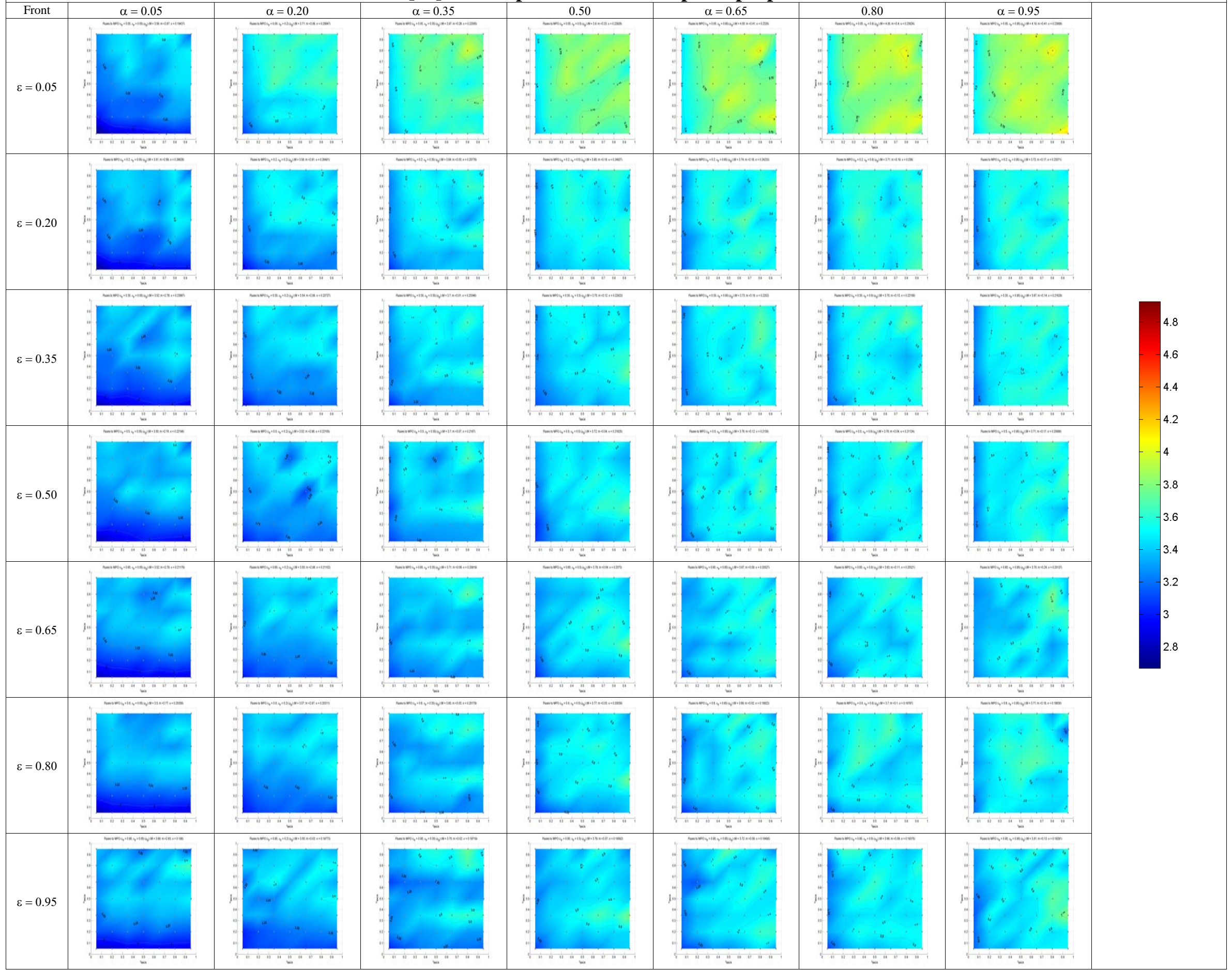
Heat fluxes to the instrument [W] – Main parameter: back optical properties - Diffusive reflection



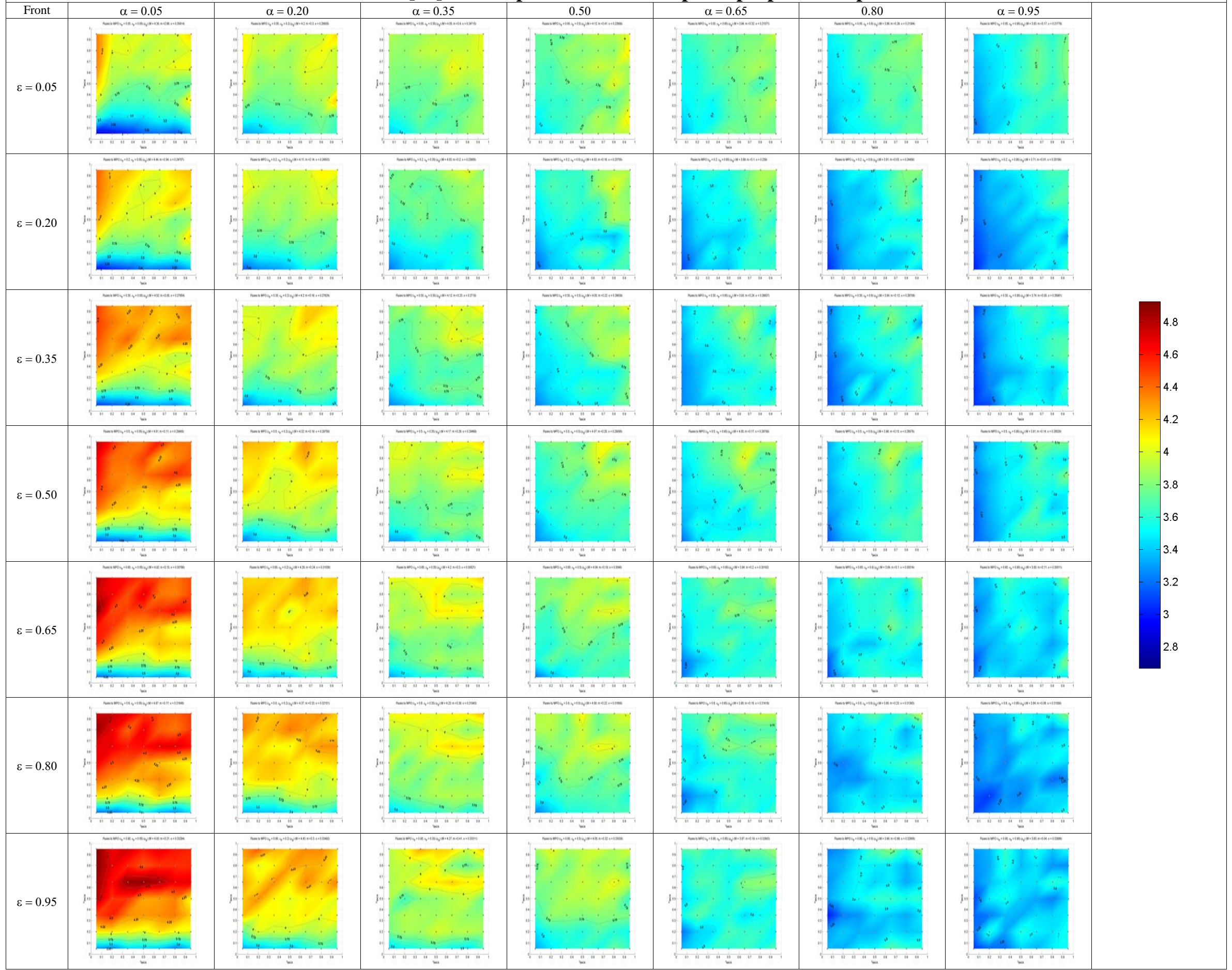
Heat fluxes to the instrument [W] – Main parameter: back optical properties – Specular reflection



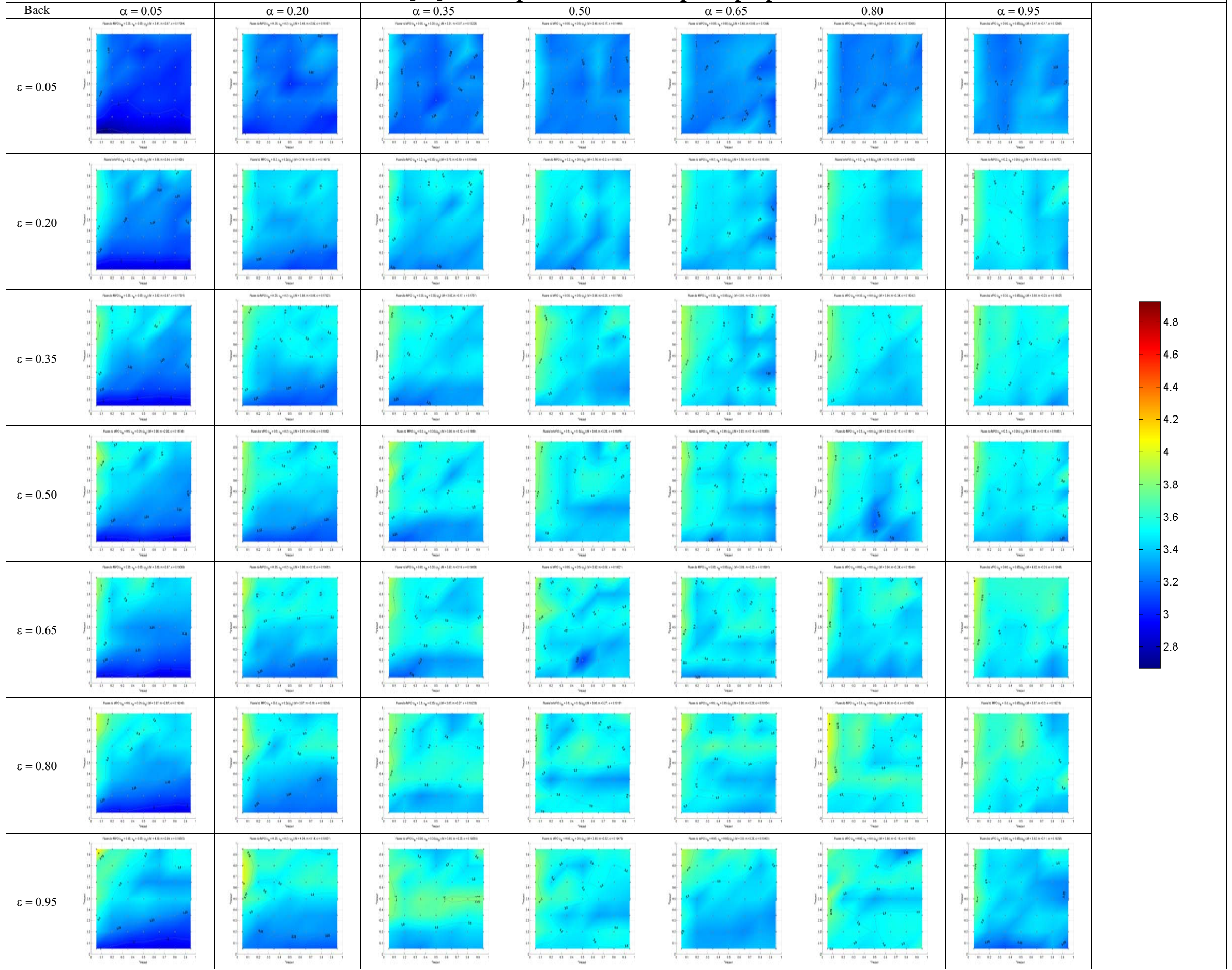
Heat fluxes to the s/c [W] – Main parameter: front optical properties - Diffusive reflection



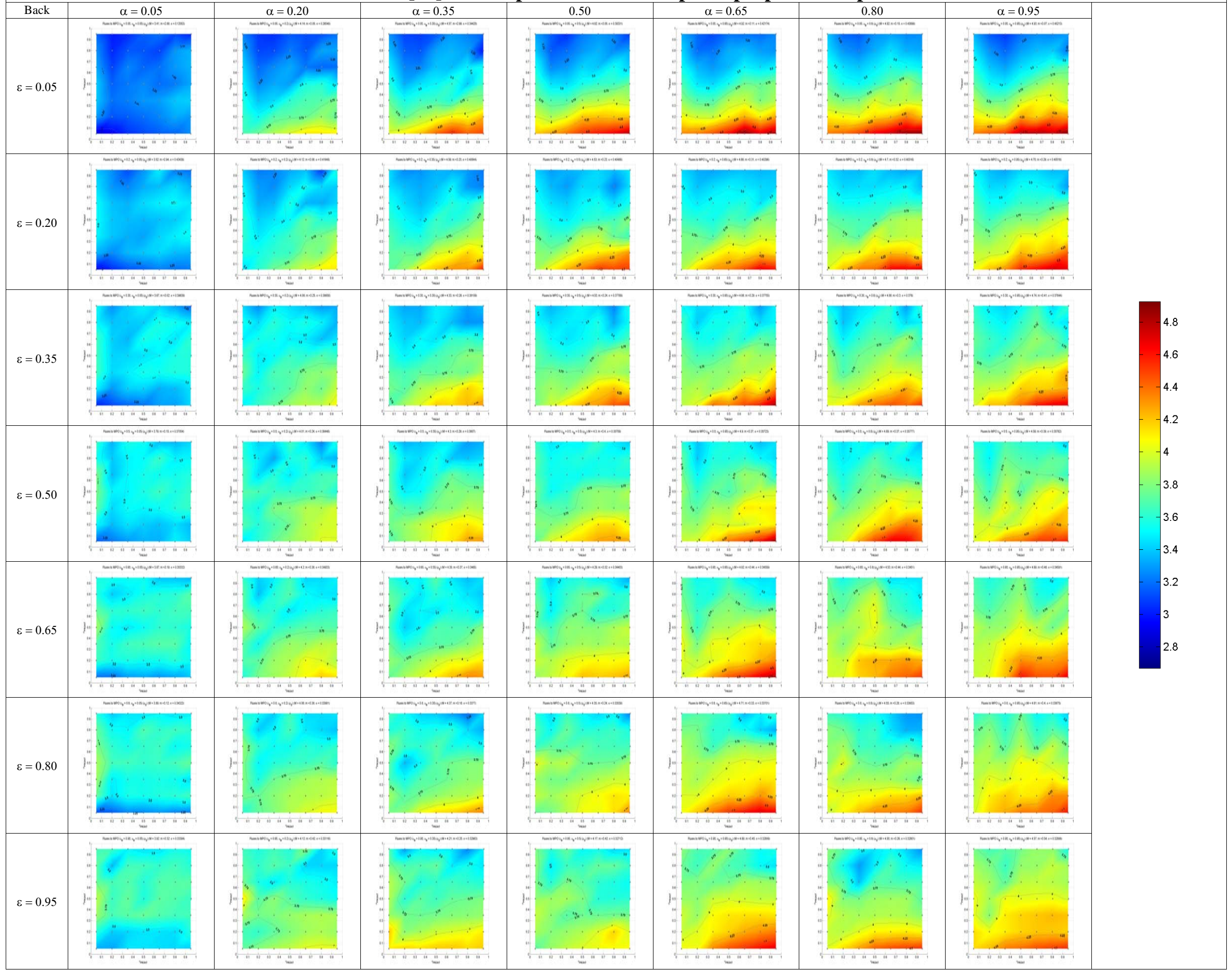
Heat fluxes to the s/c [W] – Main parameter: front optical properties - Specular reflection



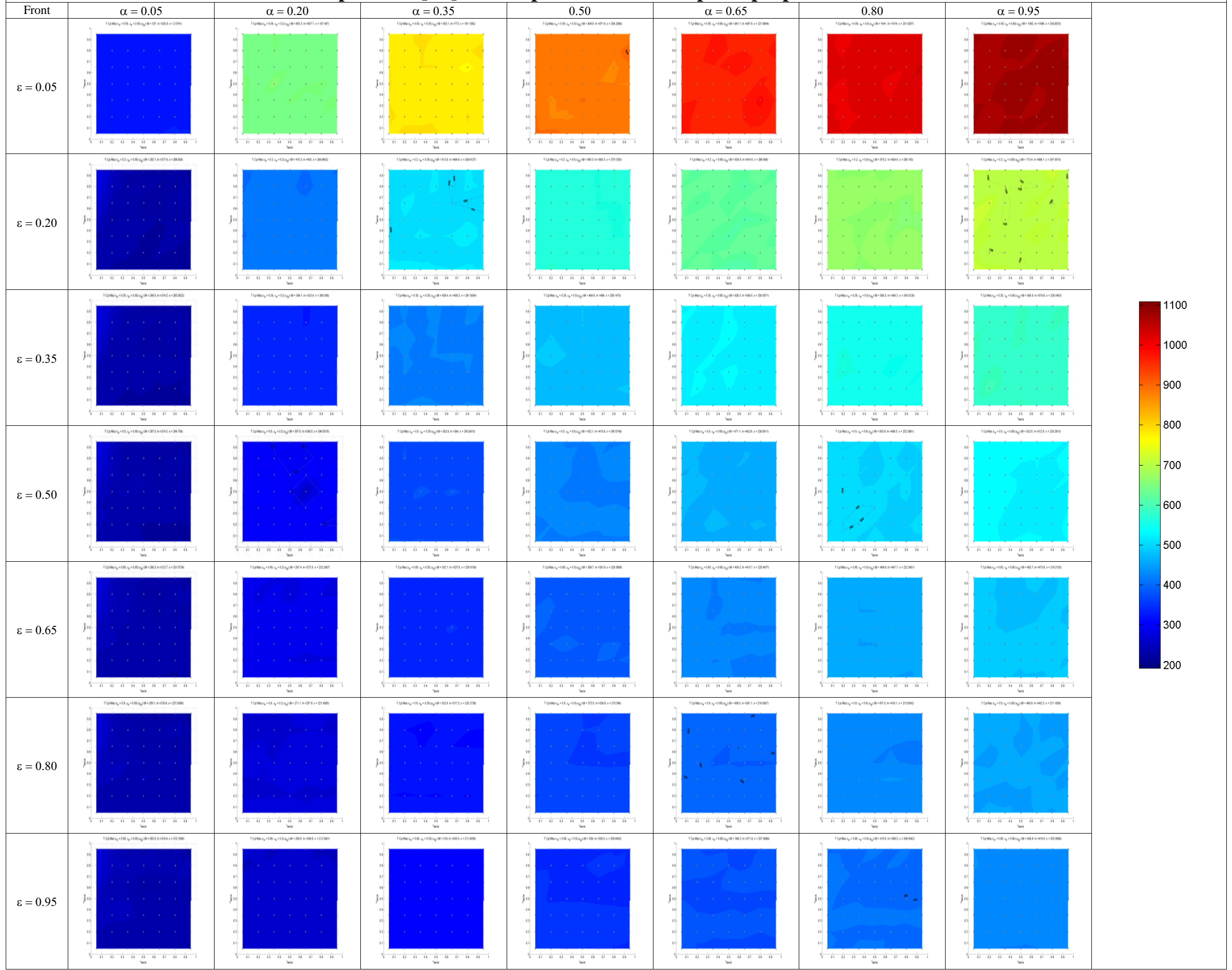
Heat fluxes to the s/c [W] – Main parameter: back optical properties - Diffusive reflection



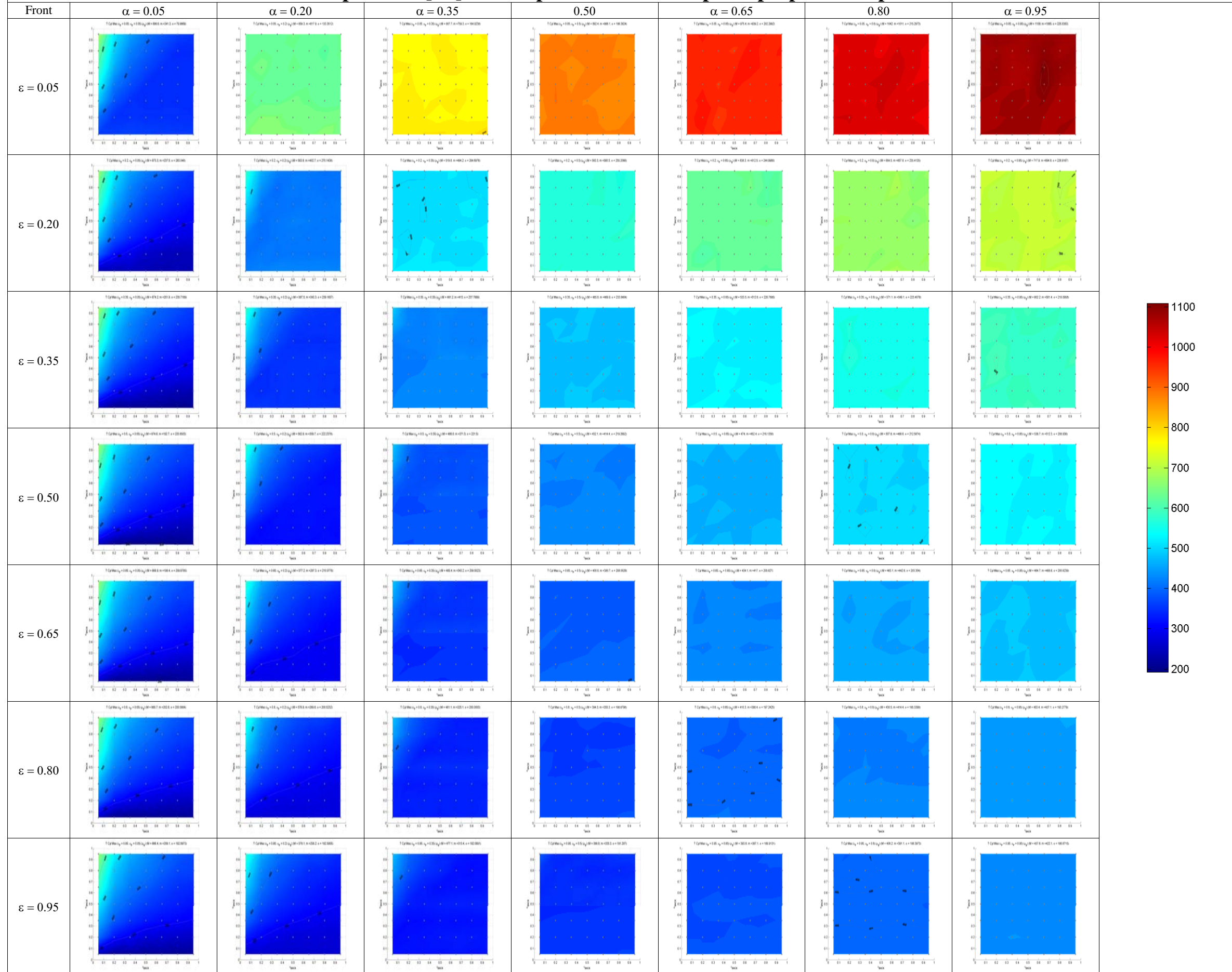
Heat fluxes to the s/c [W] – Main parameter: back optical properties – Specular reflection



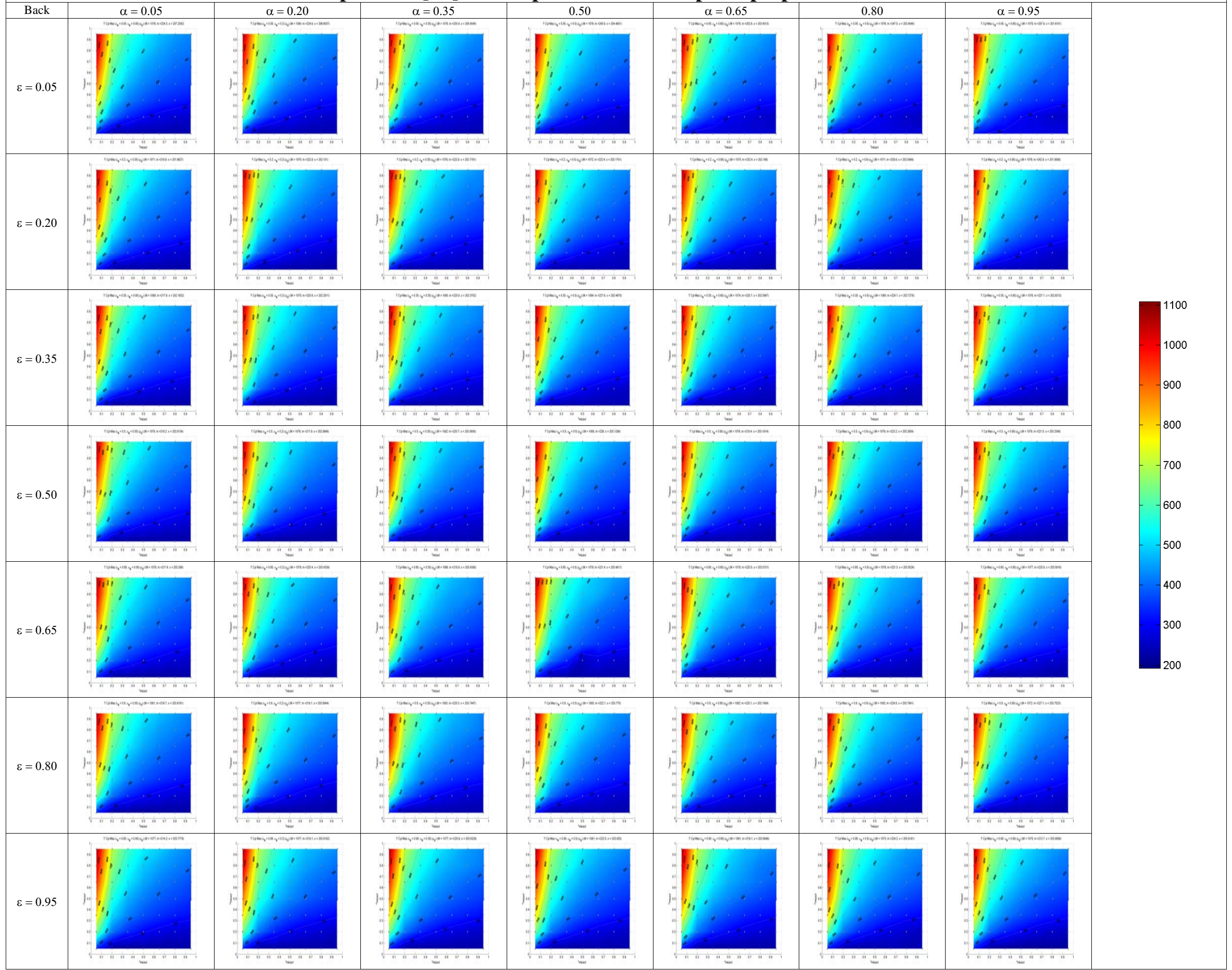
Baffle max temperature [°C] – Main parameter: front optical properties - Diffusive reflection



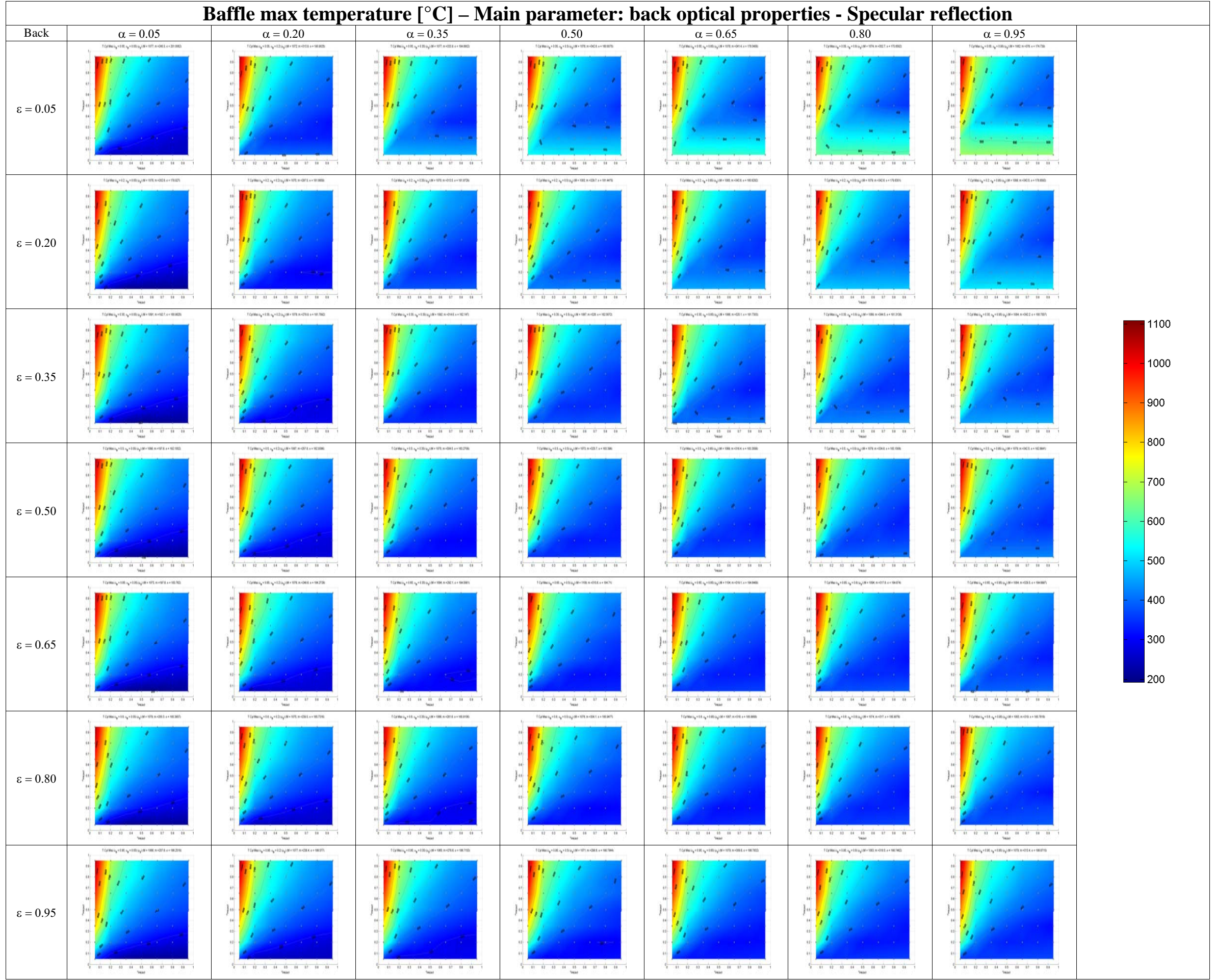
Baffle max temperature [°C] – Main parameter: front optical properties - Specular reflection



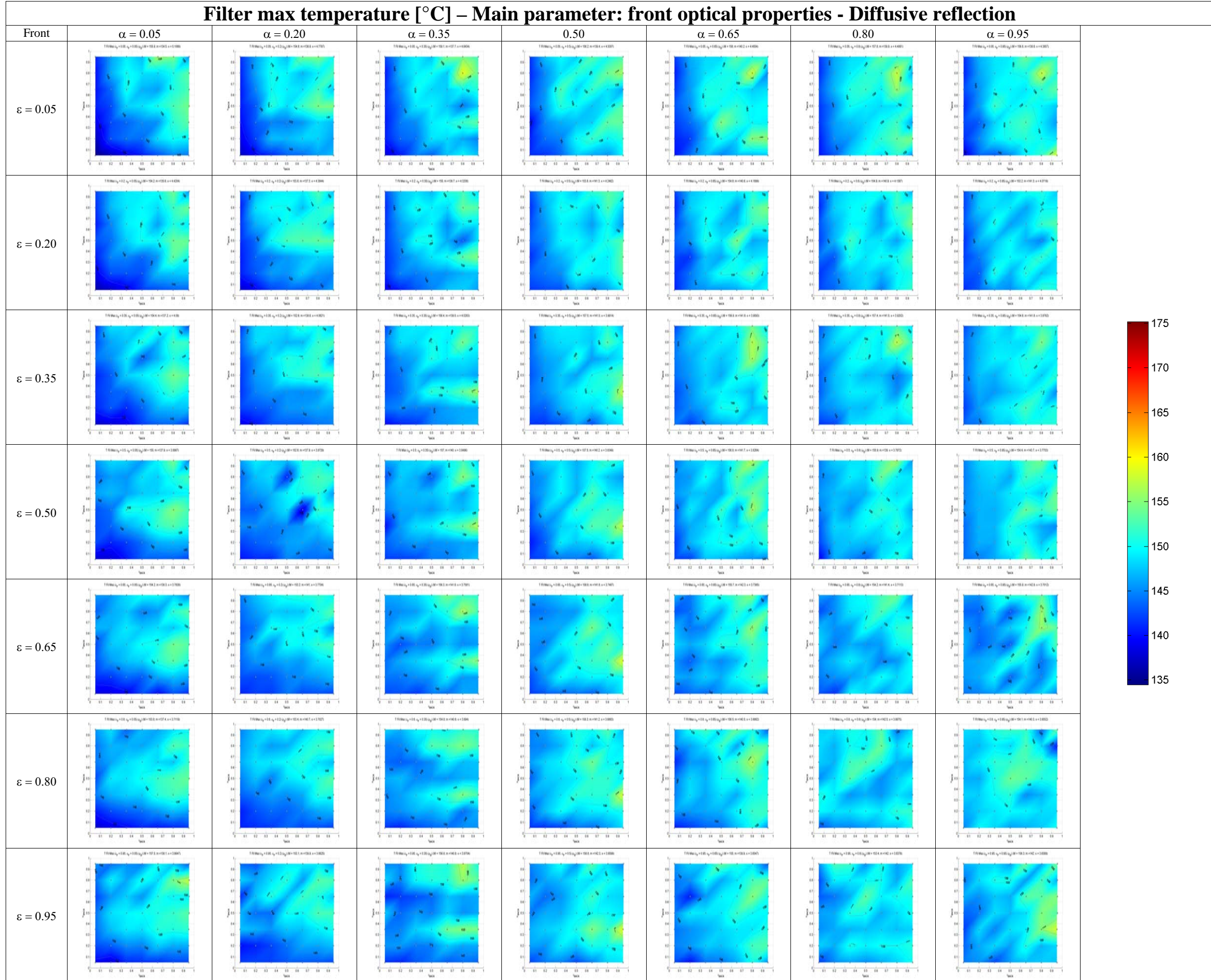
Baffle max temperature [°C] – Main parameter: back optical properties - Diffusive reflection



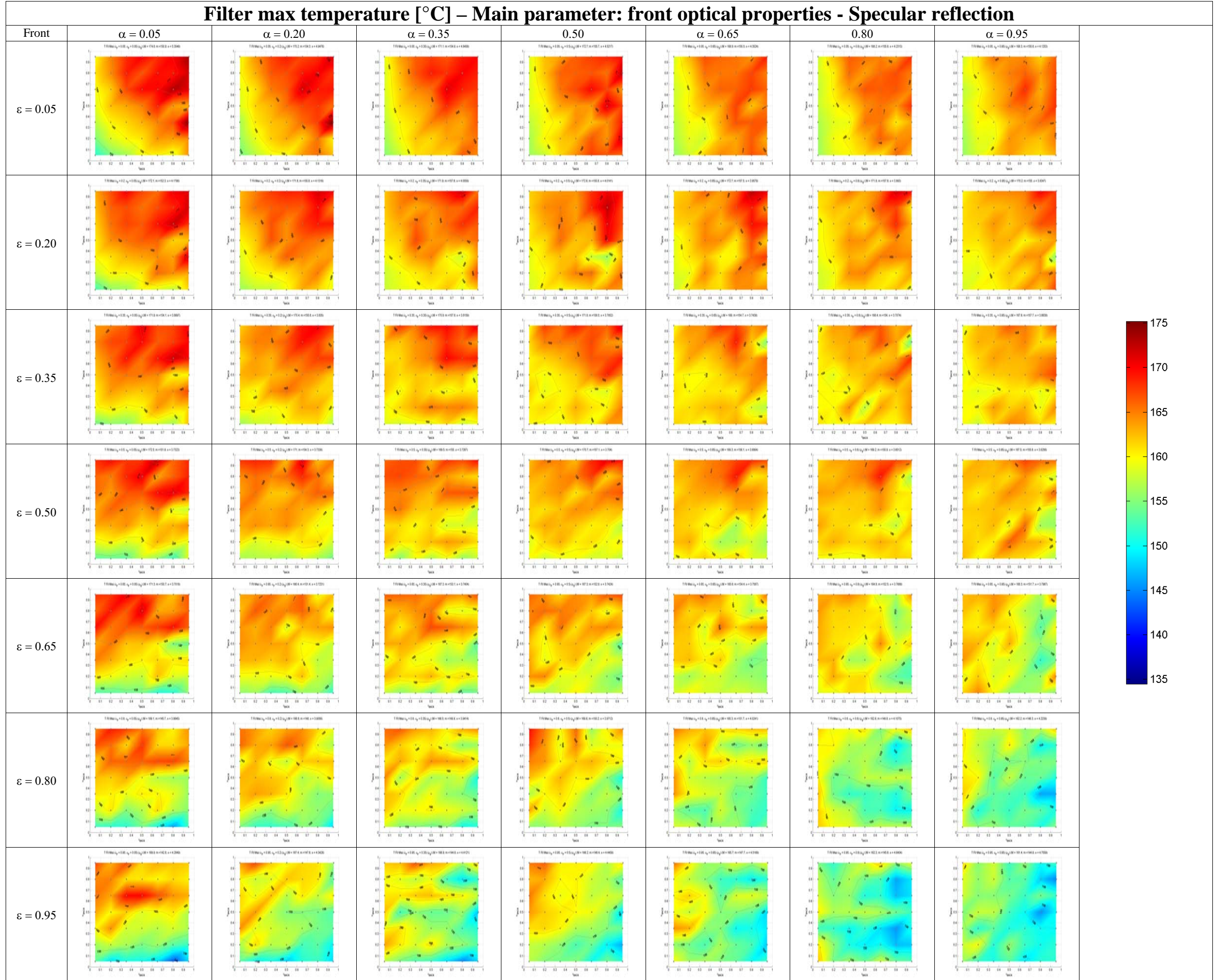
Baffle max temperature [°C] – Main parameter: back optical properties - Specular reflection



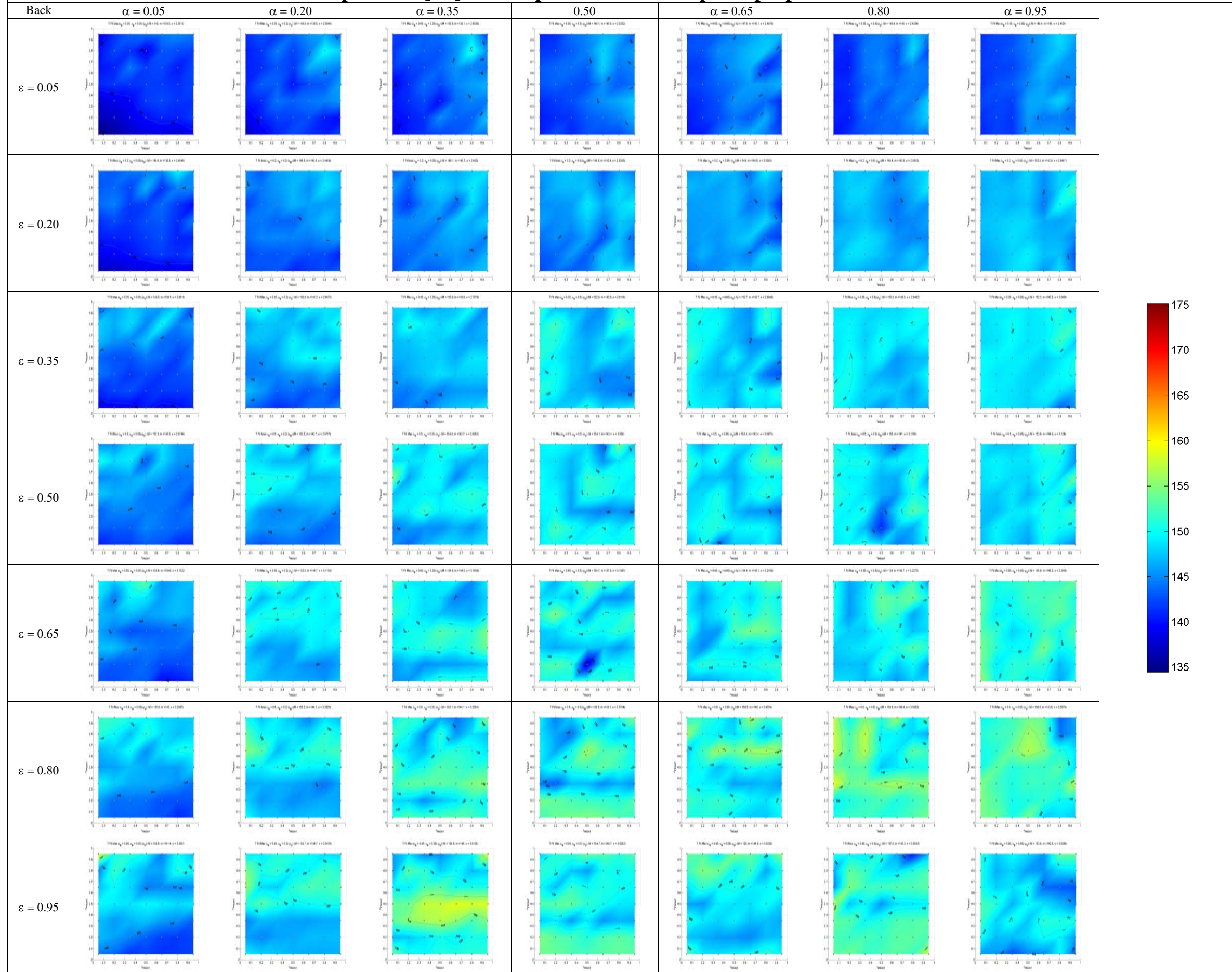
Filter max temperature [°C] – Main parameter: front optical properties - Diffusive reflection



Filter max temperature [°C] – Main parameter: front optical properties - Specular reflection



Filter max temperature [°C] – Main parameter: back optical properties - Diffusive reflection



Filter max temperature [°C] – Main parameter: back optical properties - Specular reflection

