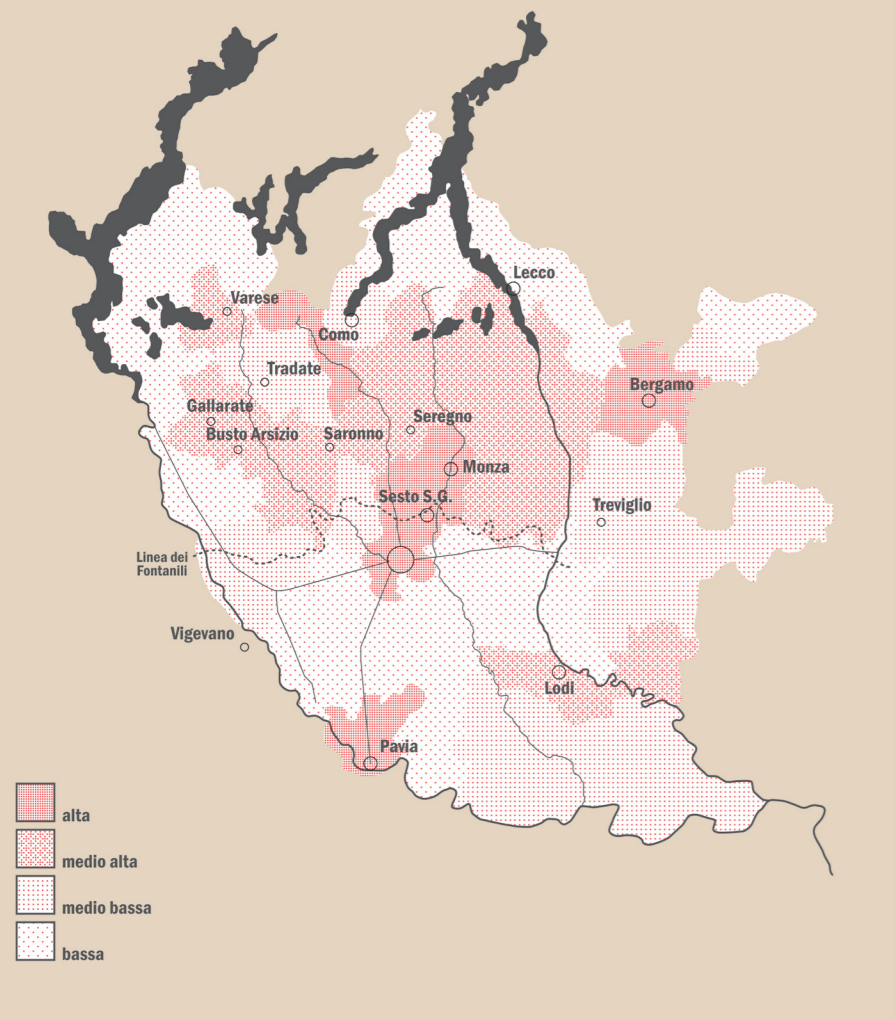
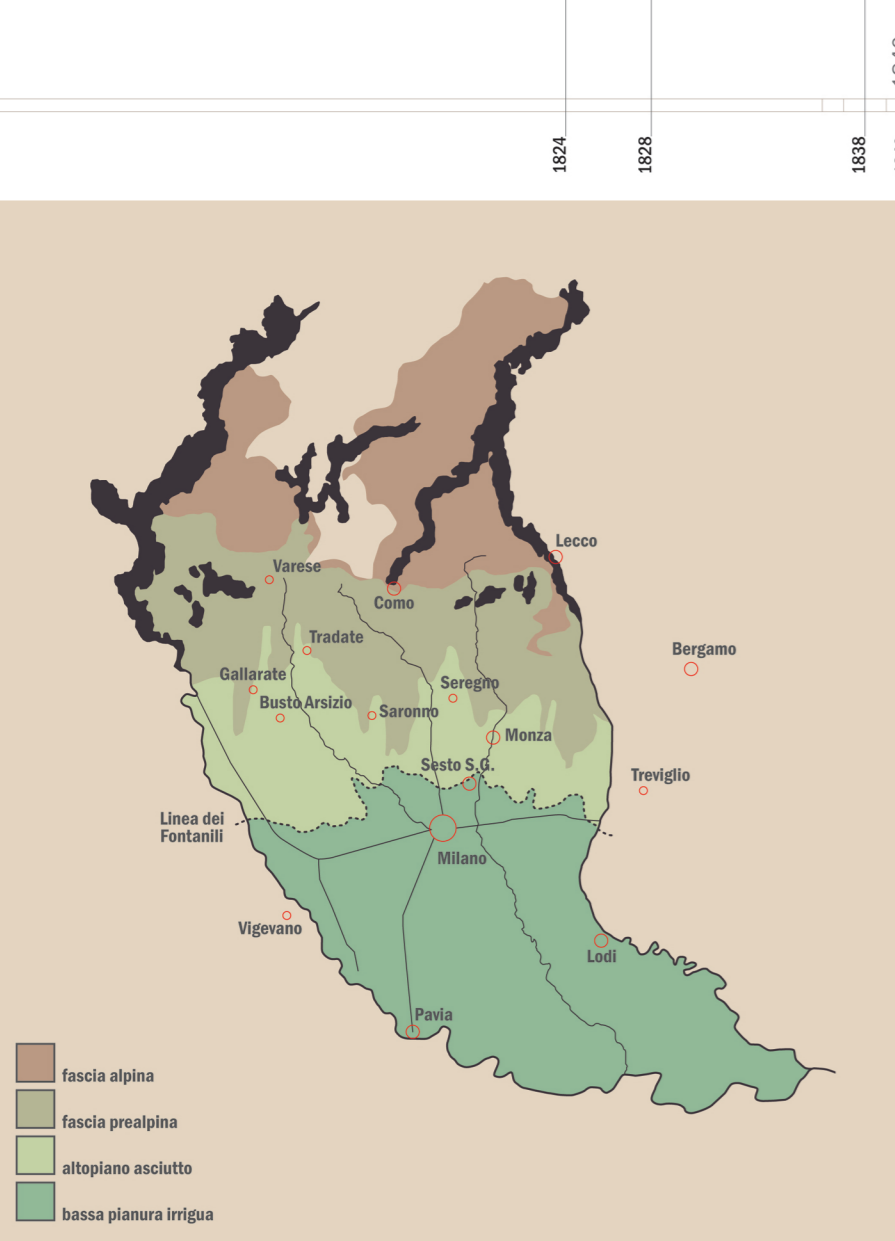


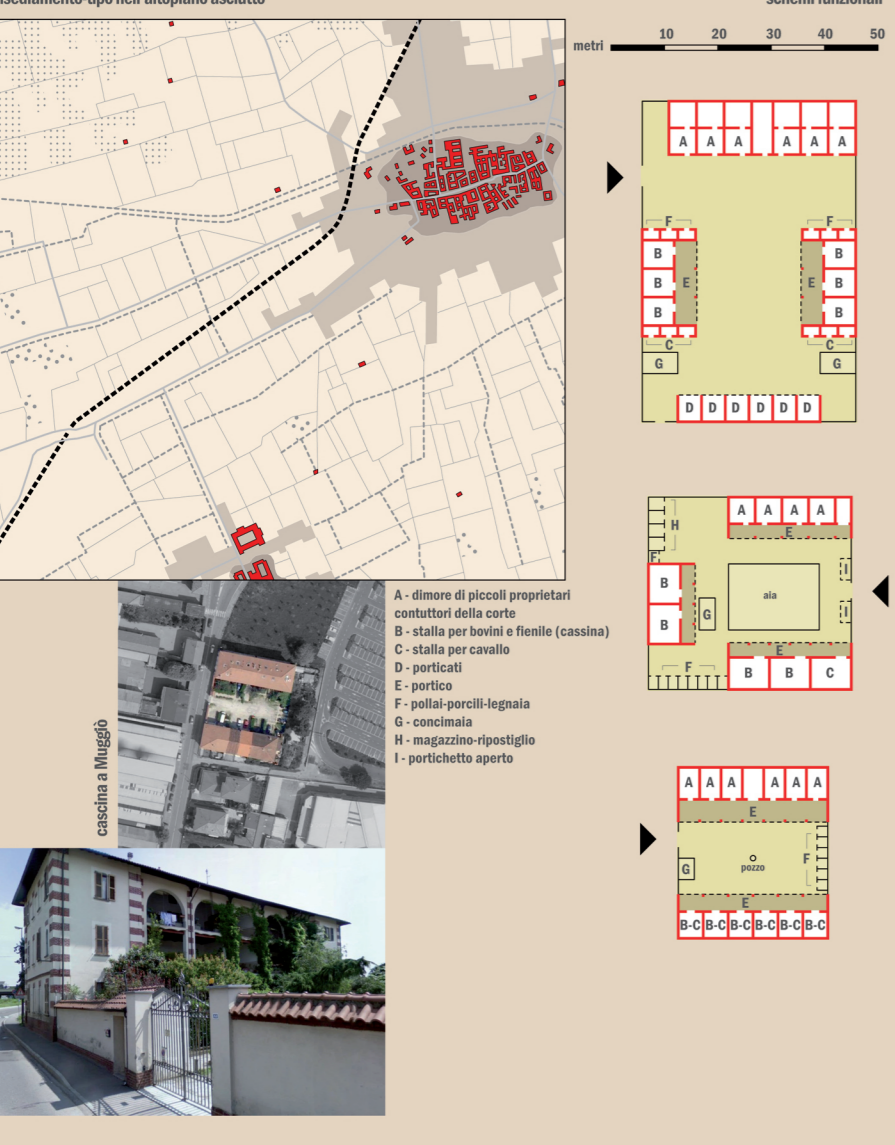
Sesto San Giovanni nel quadro di formazione della metropoli



I PRODROMI DELLO SVILUPPO METROPOLITANO



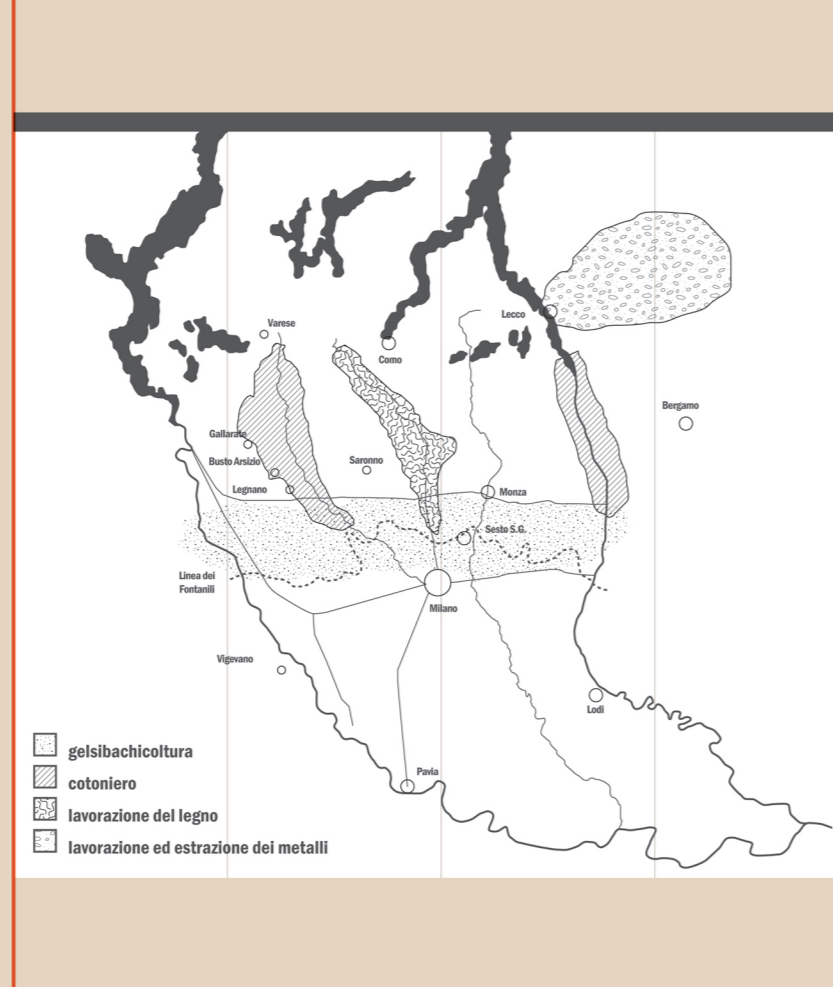
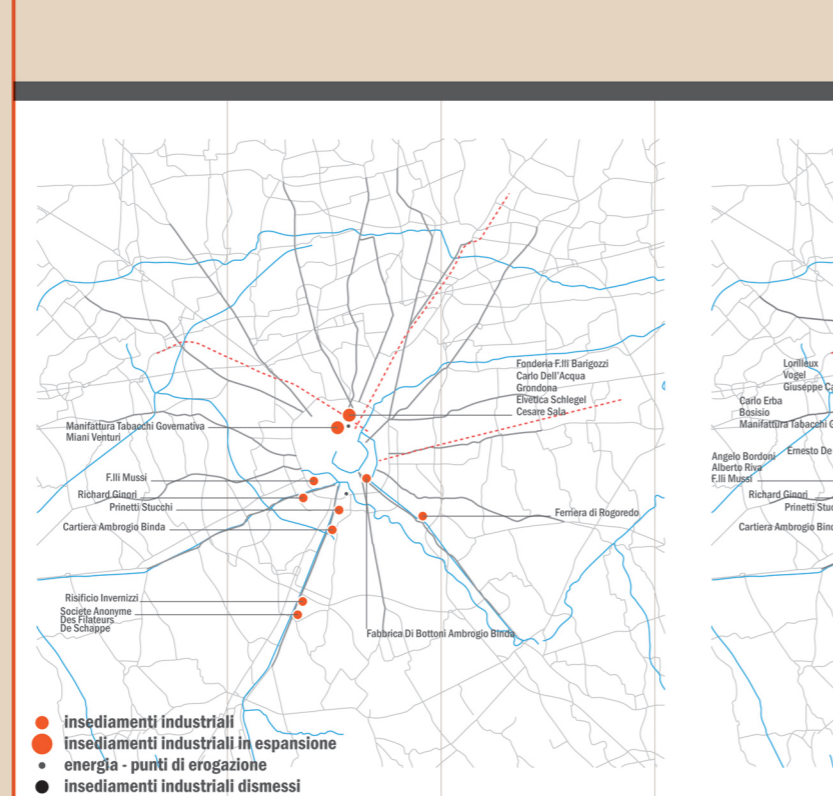
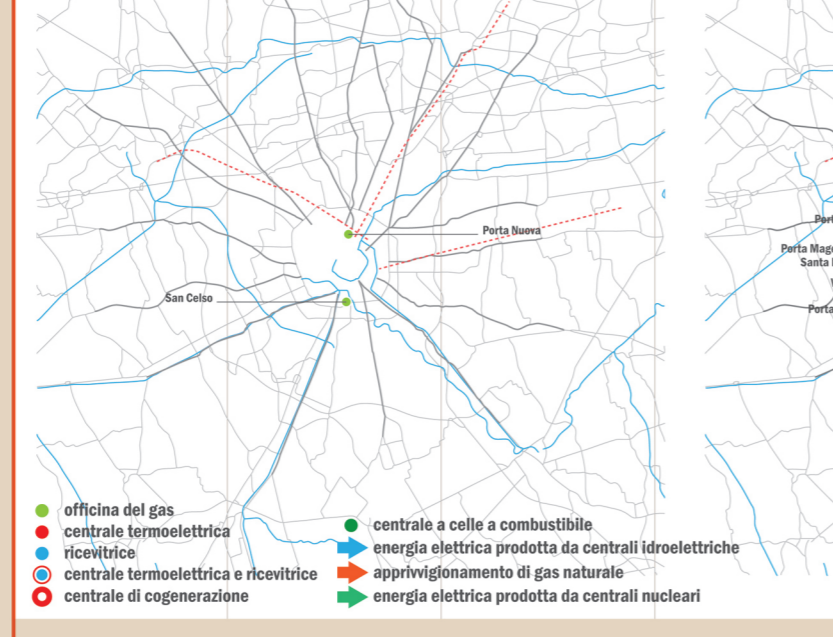
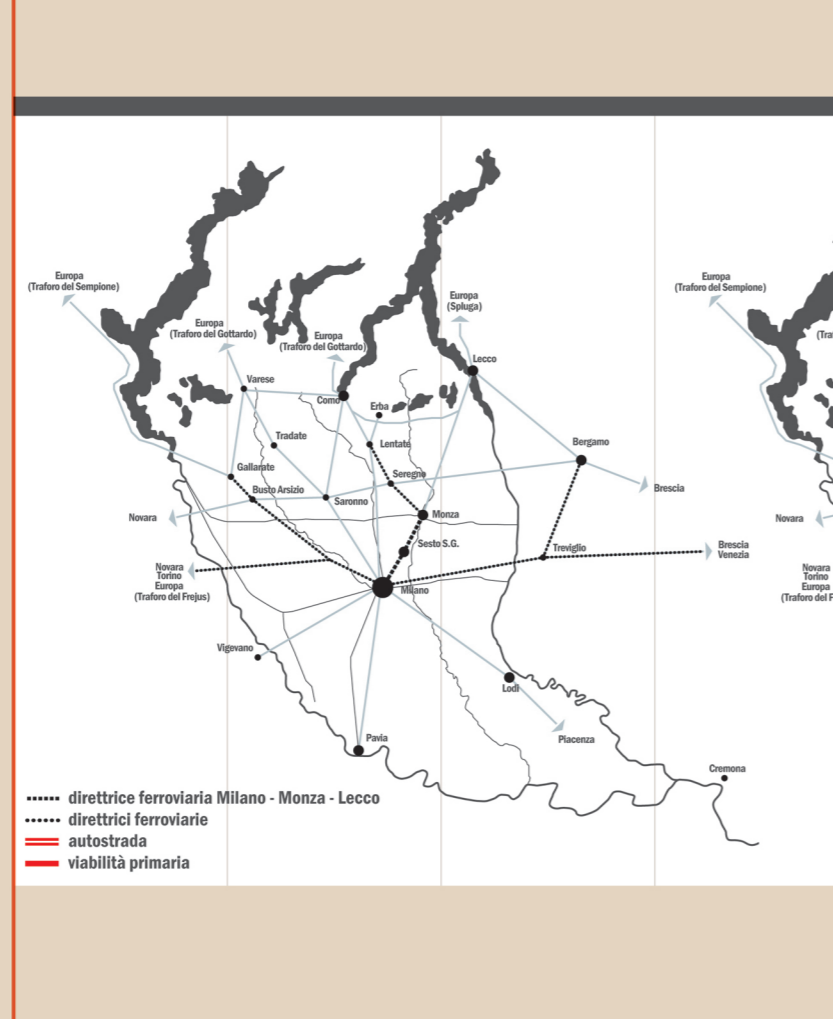
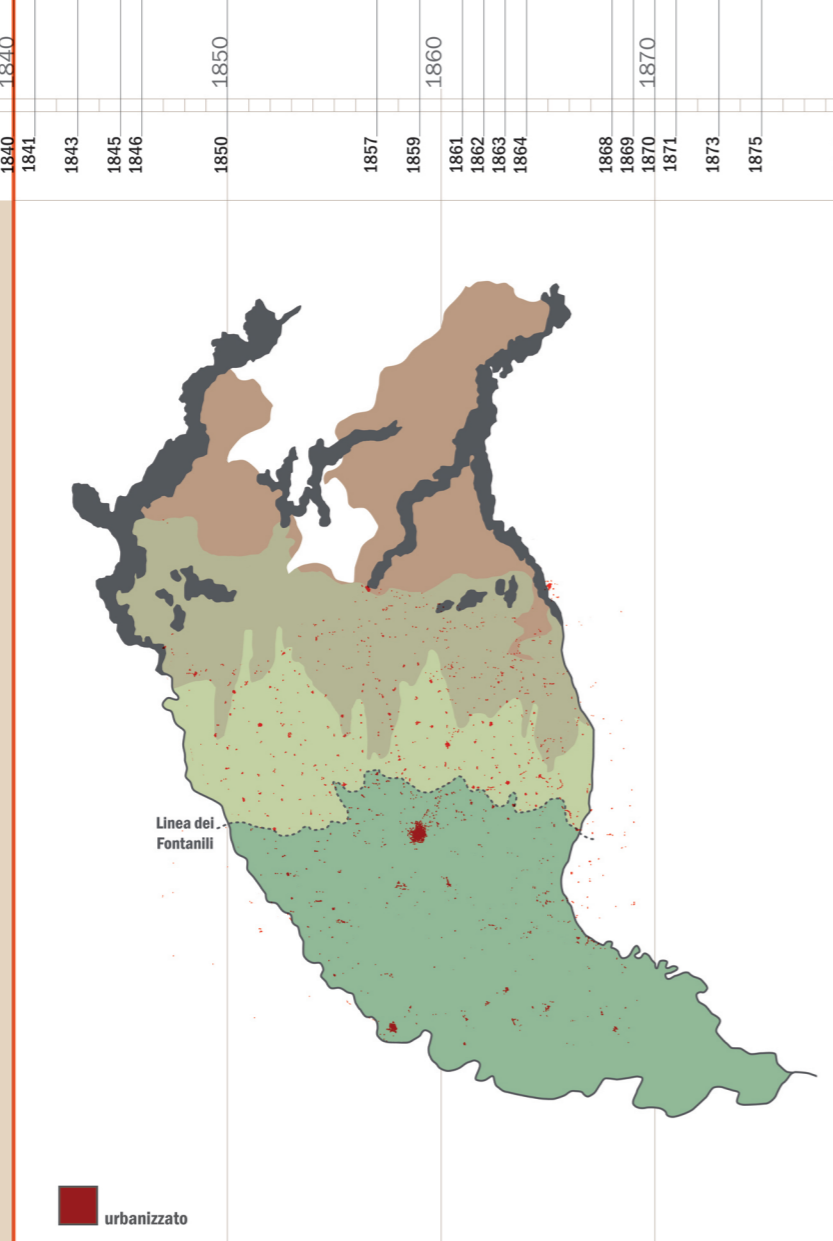
la cascina pluriaziendale



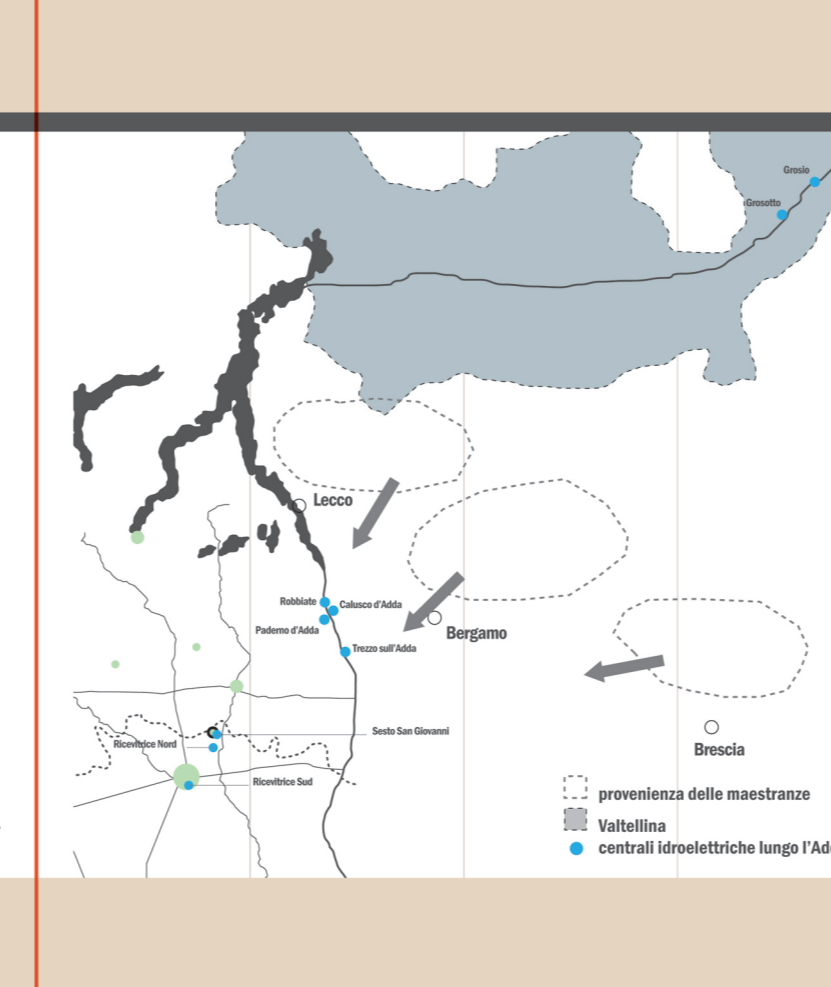
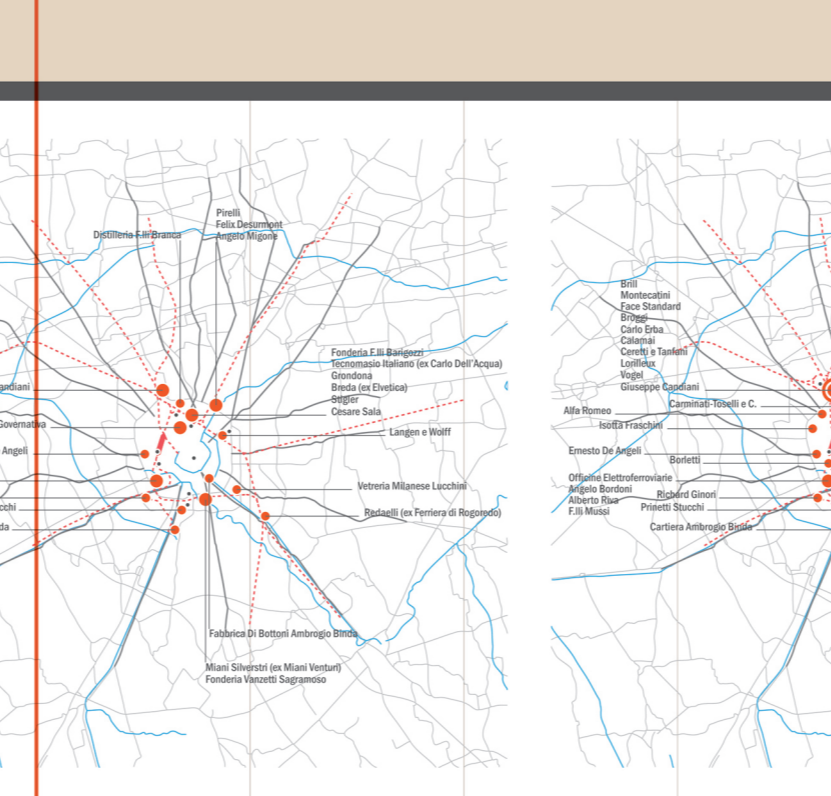
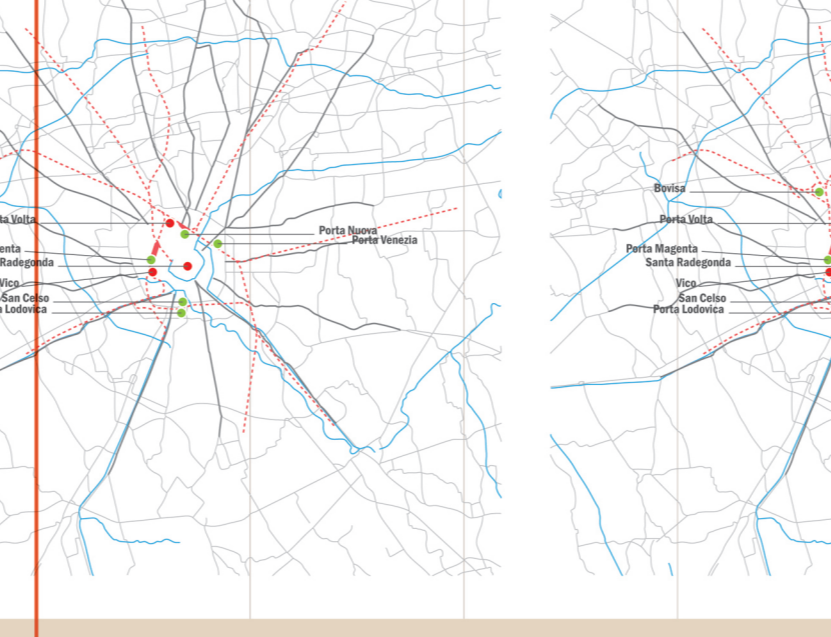
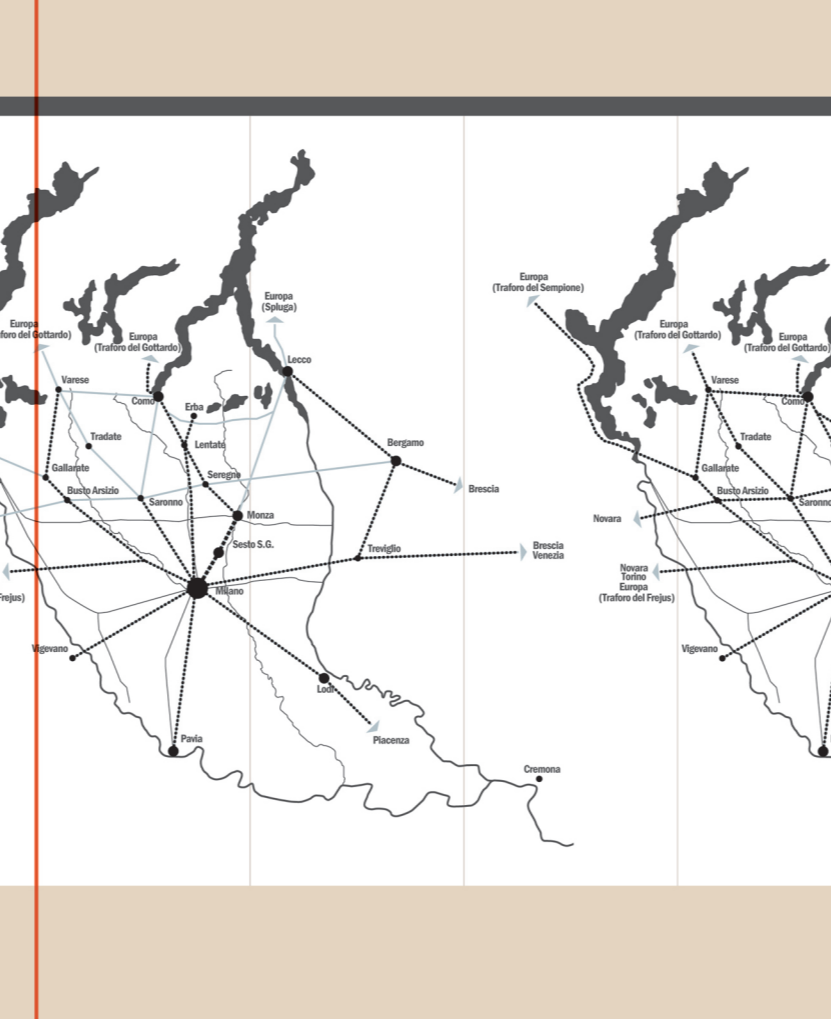
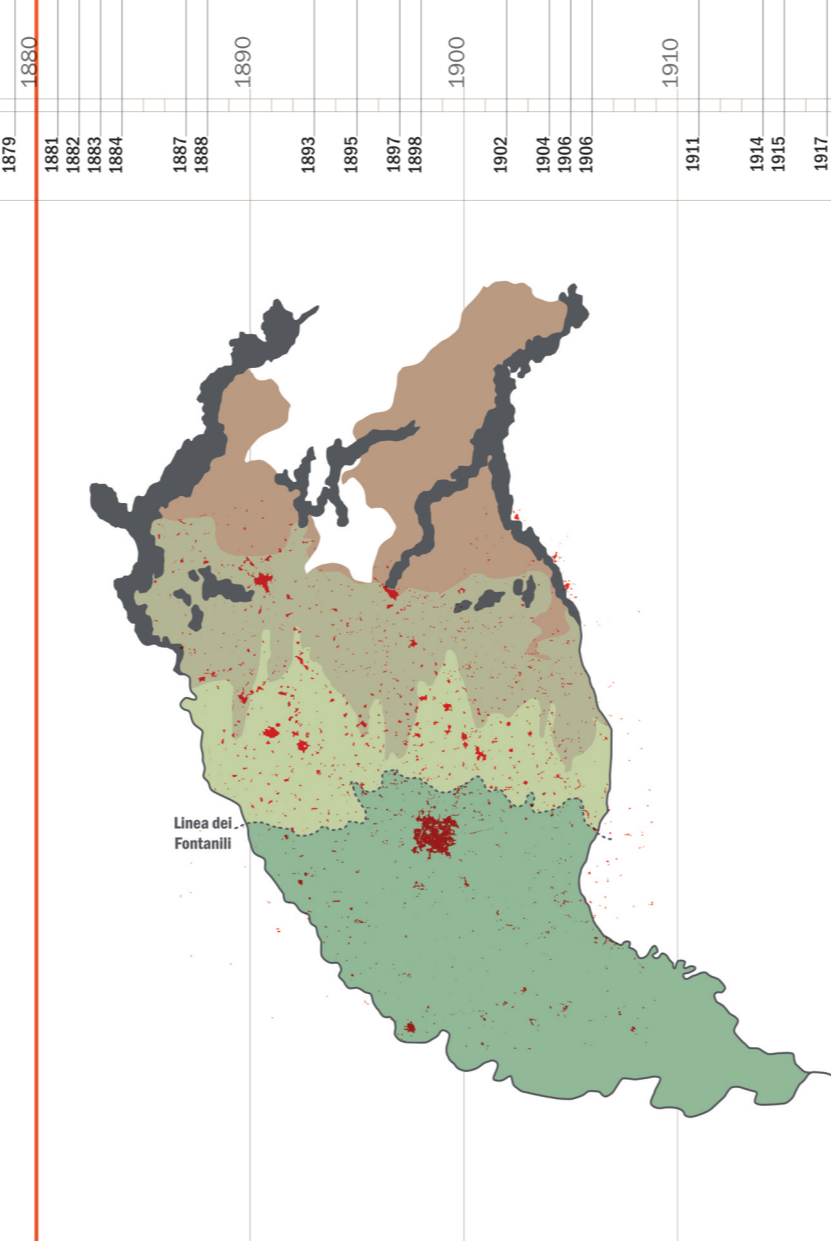
la cascina monoaziendale



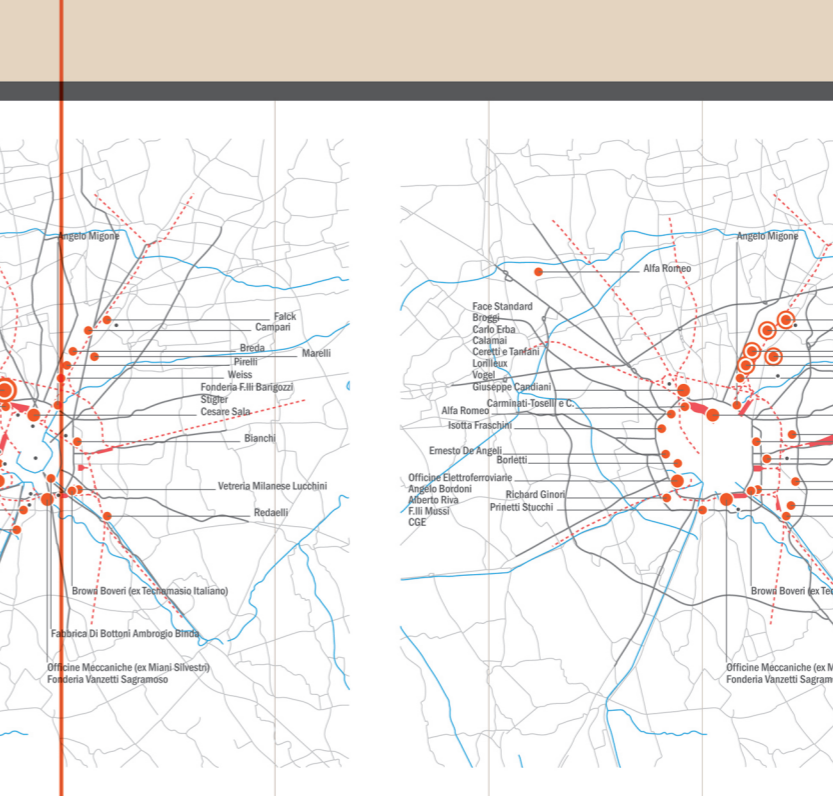
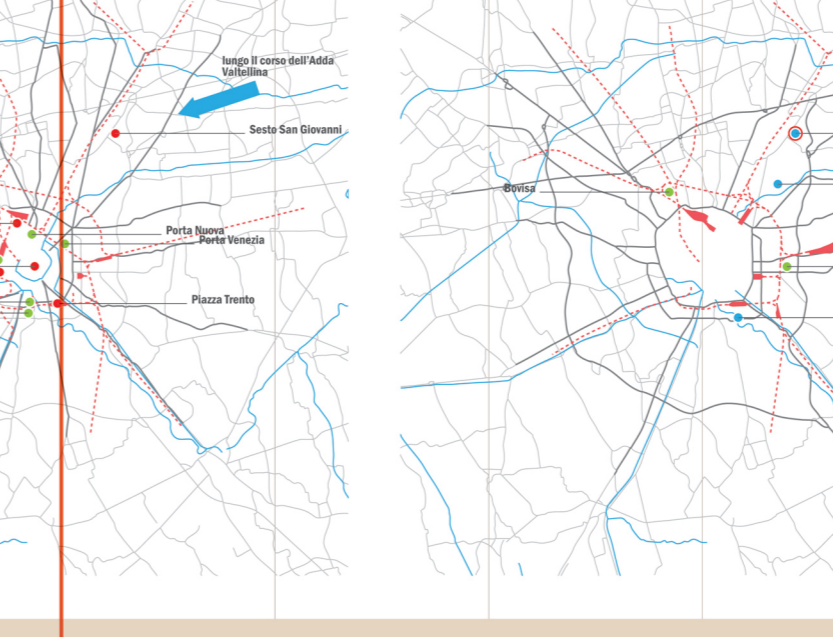
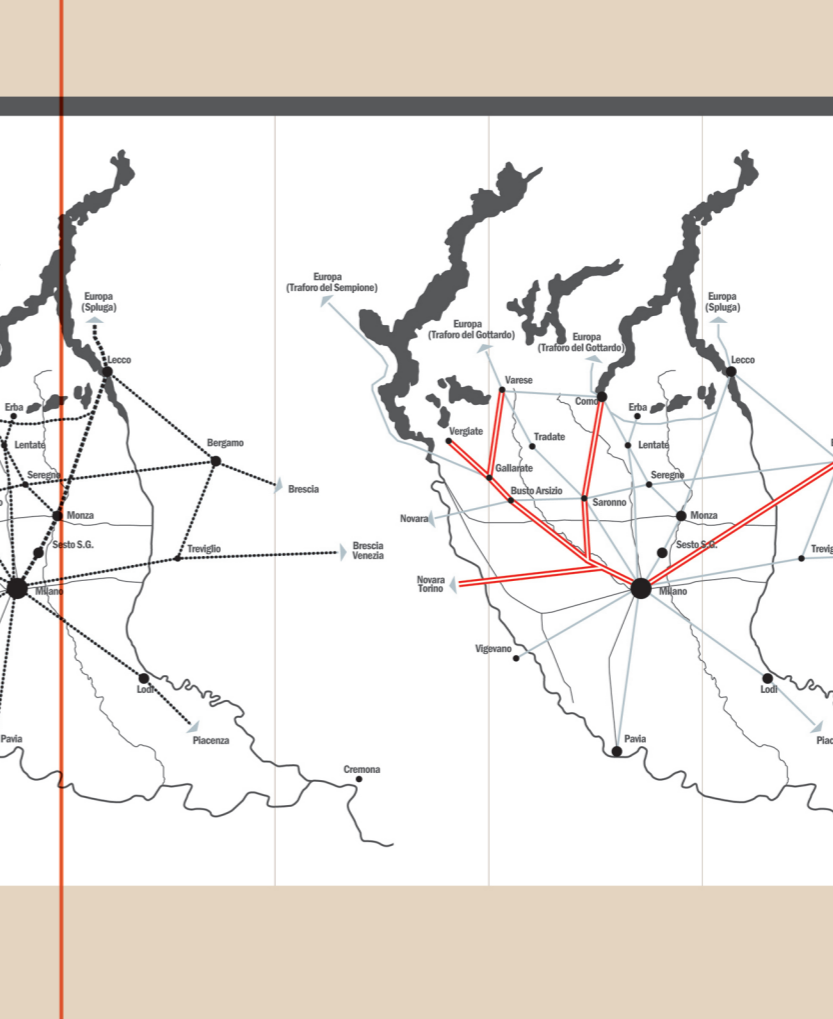
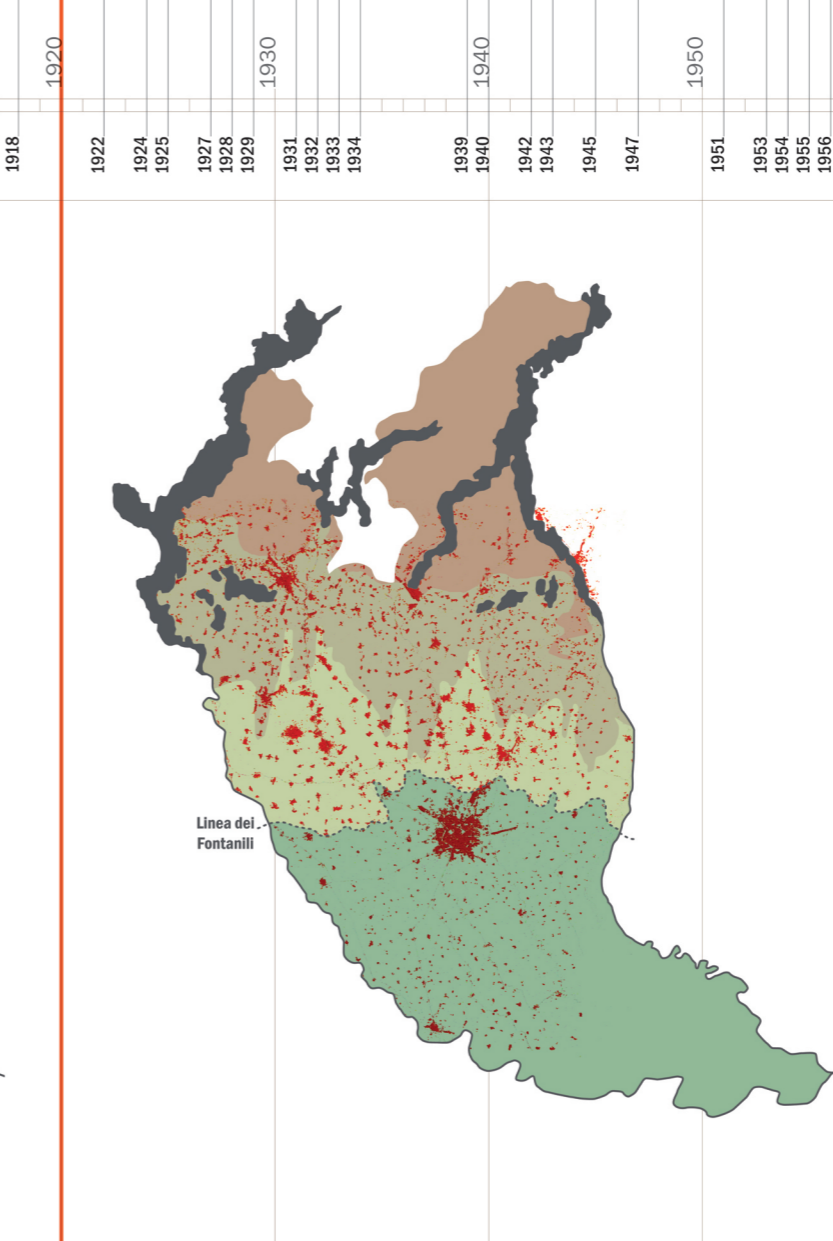
IL SISTEMA MANIFATTURIERO



IL DECOLLO INDUSTRIALE



L'EVOLUZIONE DEL SISTEMA INDUSTRIALE



CAMBIOAMENTO REPENTINO DEGLI EQUILIBRI

