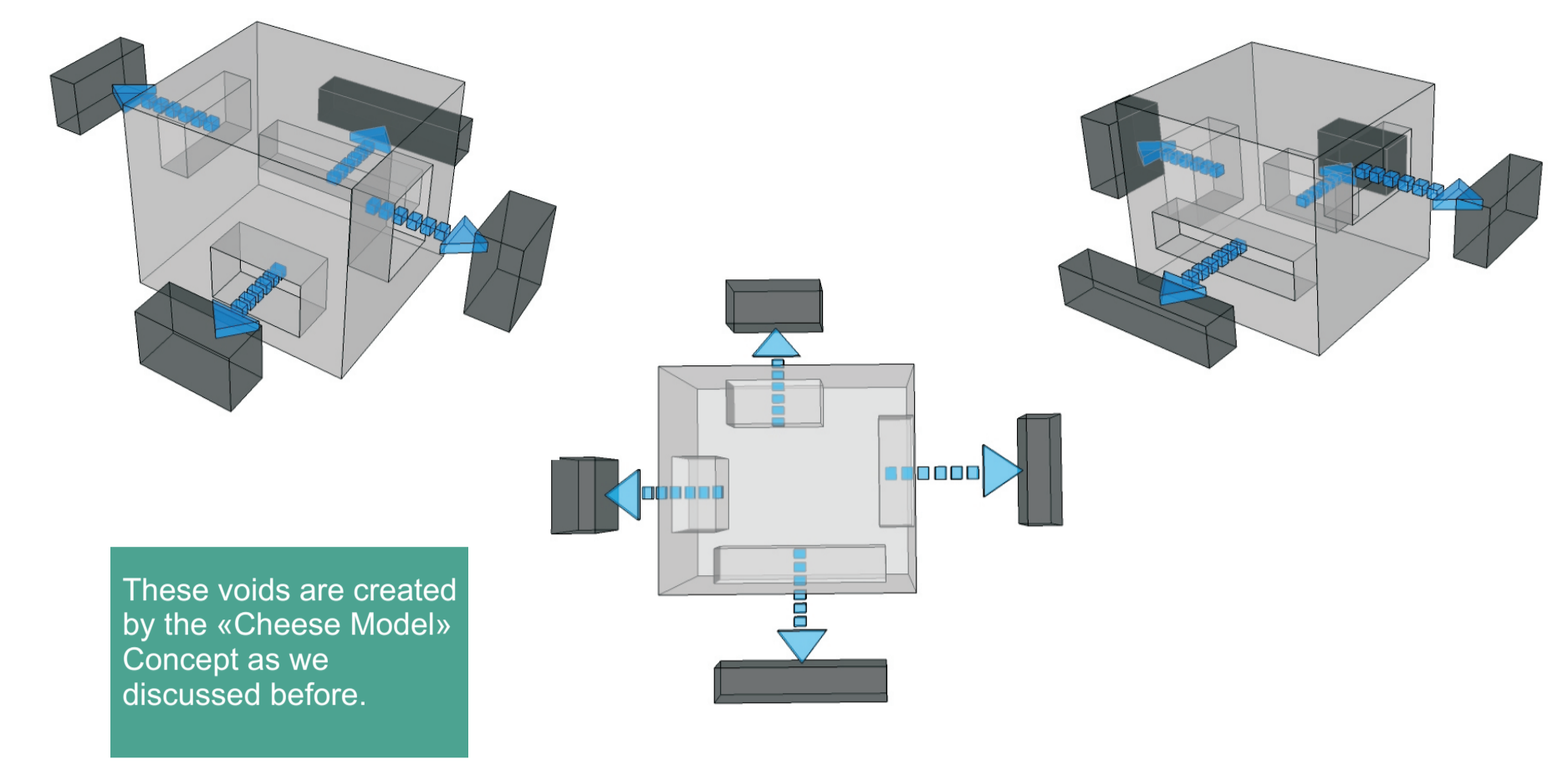
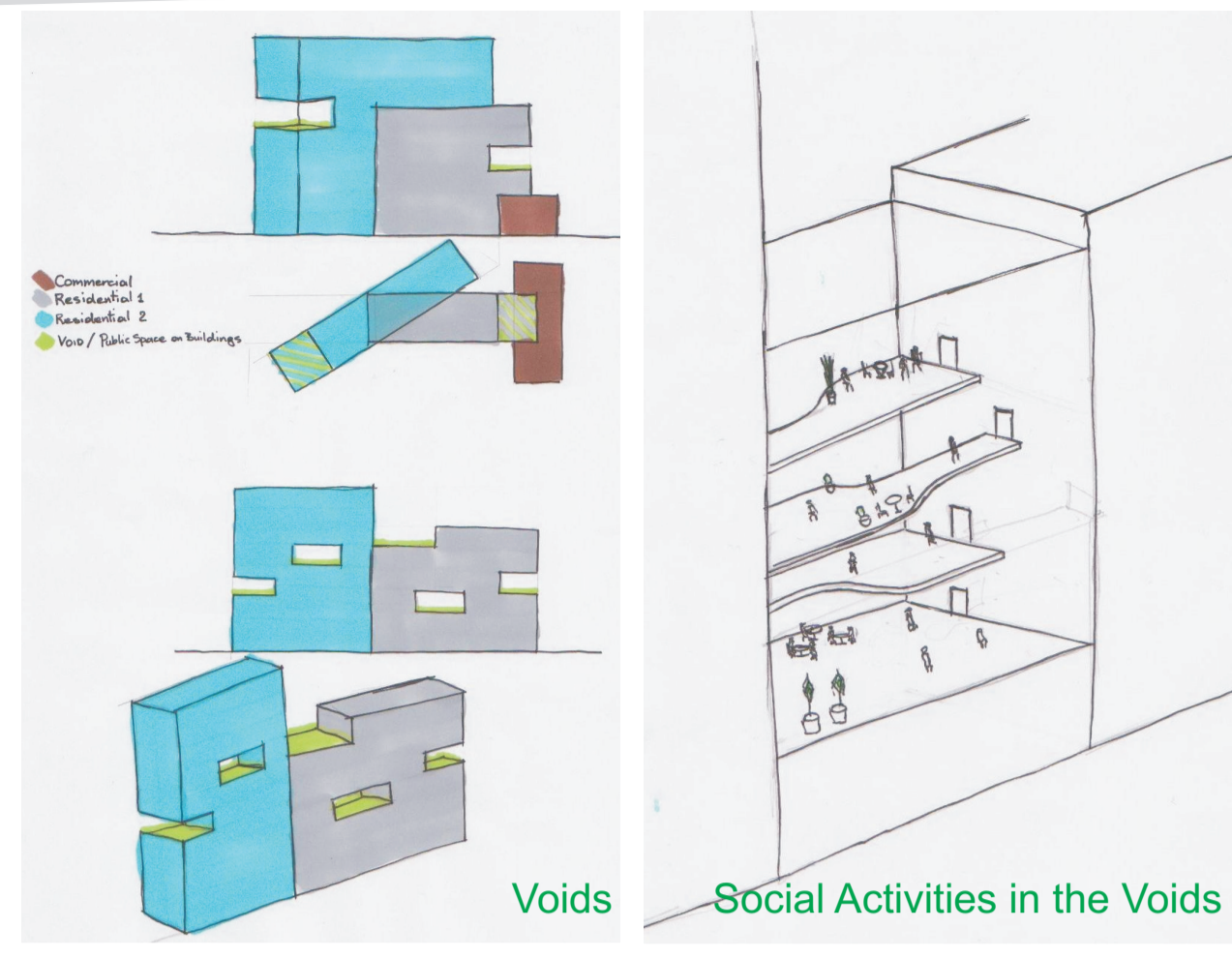


Building Design Concept



The creation of the Vertical Social Gathering Spaces brings more comfort to the residents. People can relax and enjoy the view from either the voids, or the open space areas, both on the residential and the commercial sectors of this project.



Material Analysis



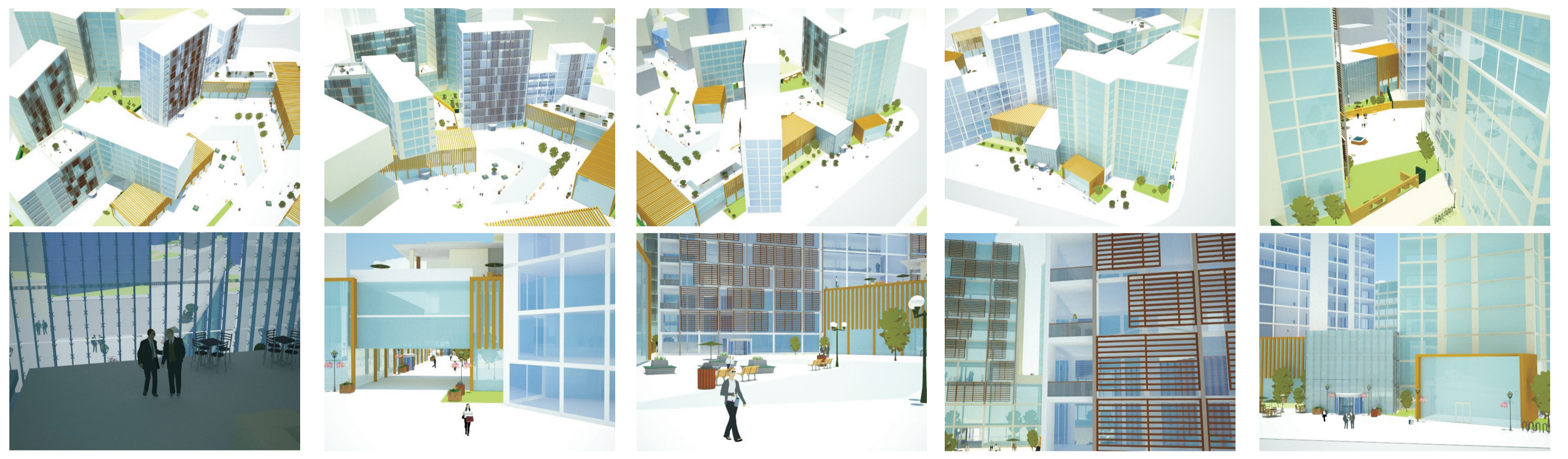
Glass Facade: In order to maximize the use of sun light for all for sides of the buildings, the facades that aren't facing south, they are made of high-tech glass facades, which would bring the sunlight into the building, while keeping the Infrared rays outside. This will minimize the heat gained in the rooms, and therefore less energy is spent to cool down the house, as well as lighting the rooms.

Wooden Shutters: In minimize the heat gained from the sunlight on the south side of the buildings, while at the same time benefiting from the light, we have implemented Wooden Shutters, which can brake the sunlight coming into the apartments. These wooden shutters can be adjusted by the users, through an electronic control.

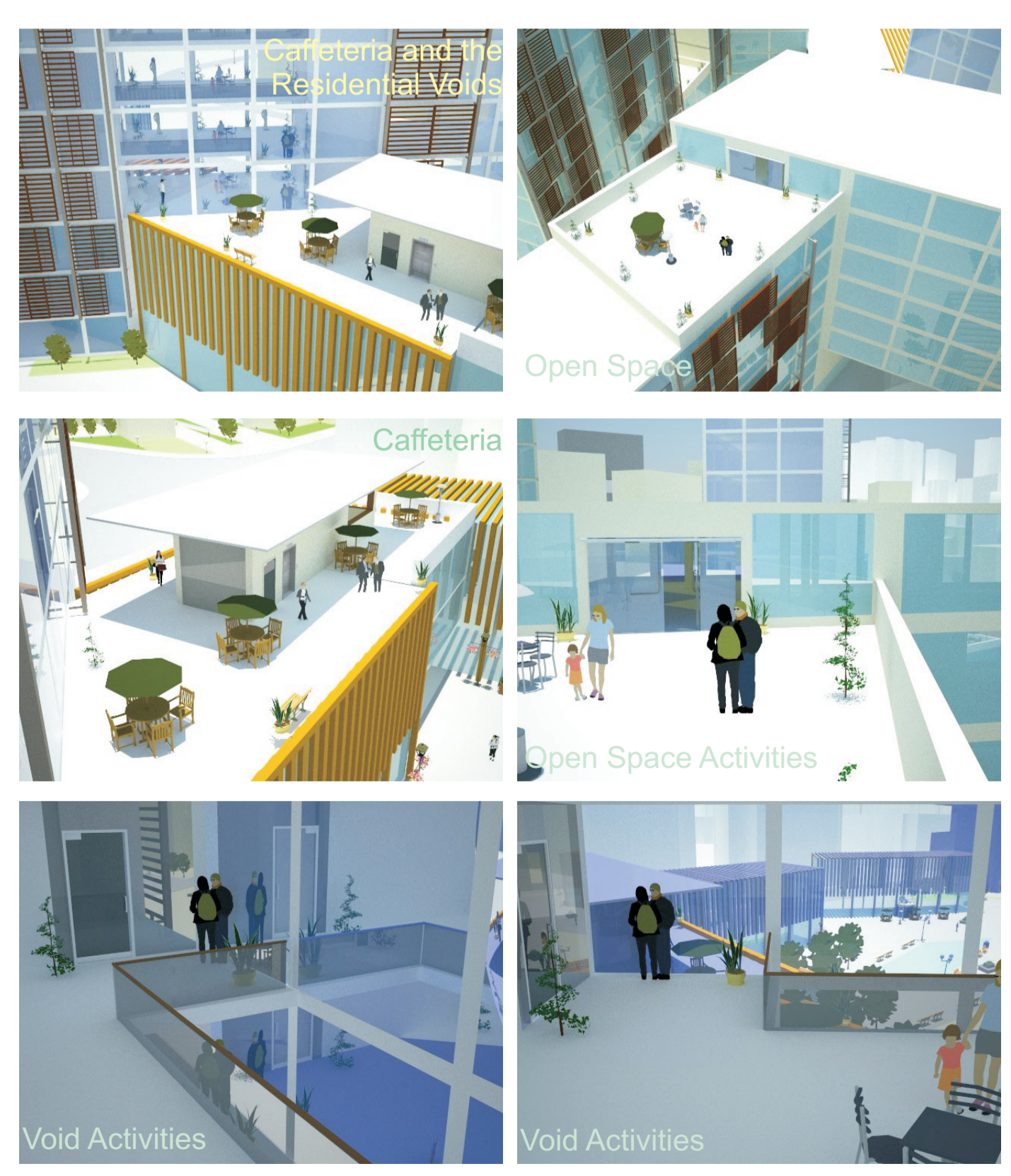
Wooden Frames: The commercial area is covered by a wooden frame, which minimizes the heat gained from the sunlight, while at the same time making it to benefit from the light. These wooden shutters also give a nice, welcoming and a warm feeling to the area.

Spider Glass Box: In this complex, we have two Glass boxes. These Glass boxes are made of Spider Glass Facades, which would indicate a public space, or an entrance to the complex. They function as connecting hub between the commercial and the residential towers, and they host social gathering spaces, coffee shops and relaxing areas.

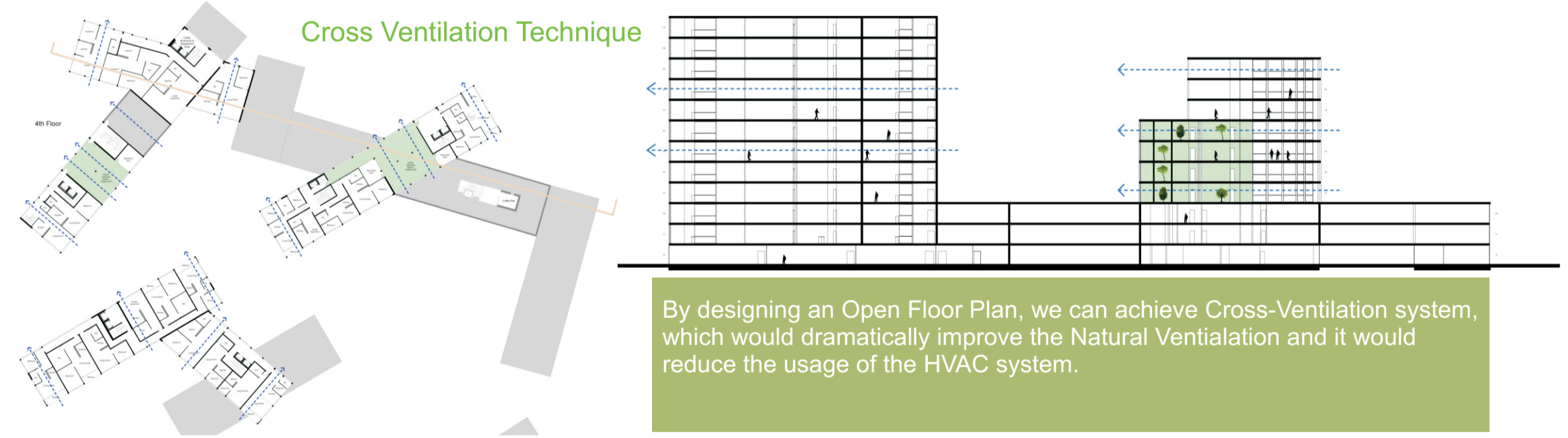
Renders of The Complex



Renders of Social Gathering Spaces



Green Features



Inspirations

