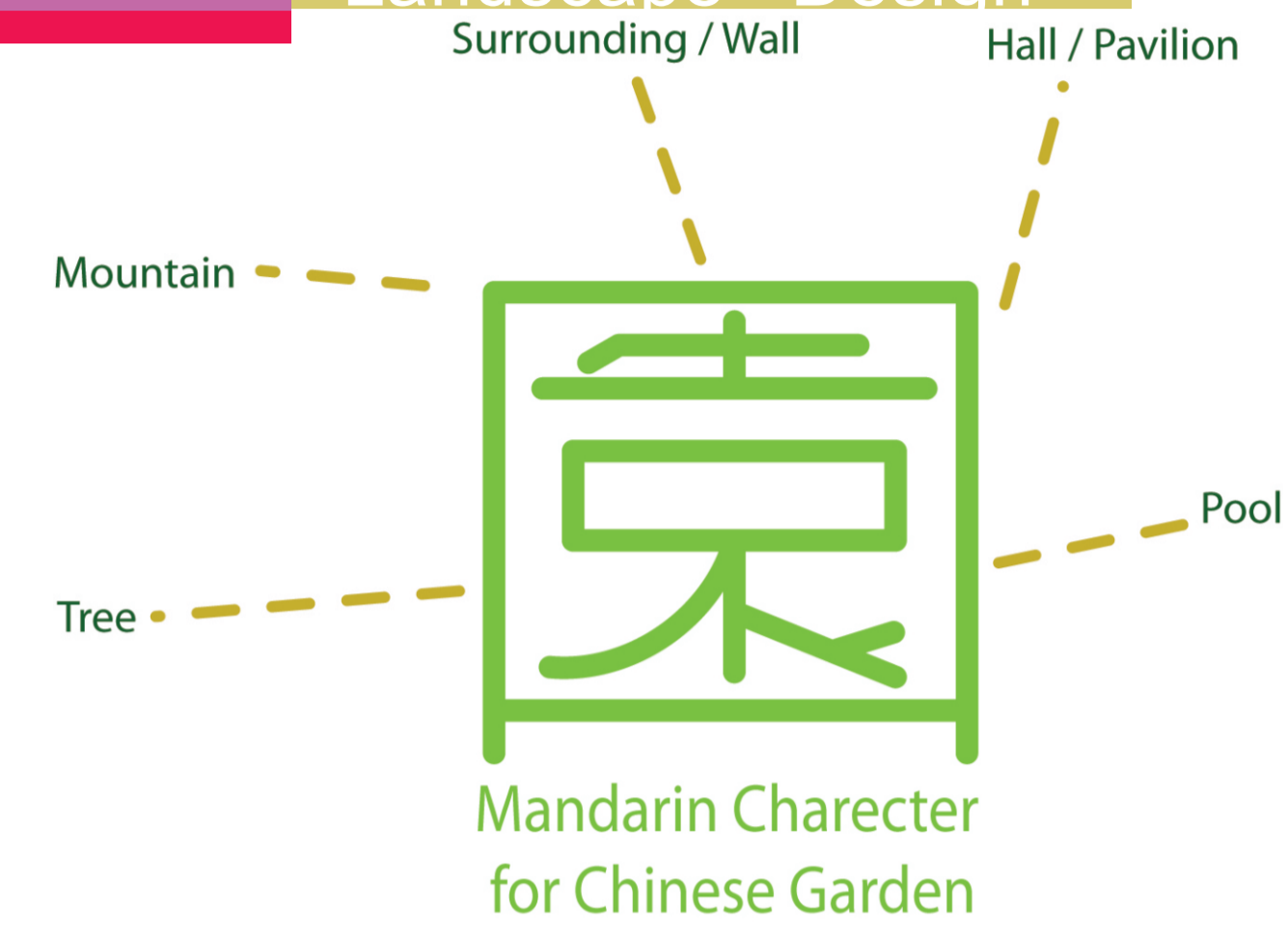


Landscape Detail

Landscape Design

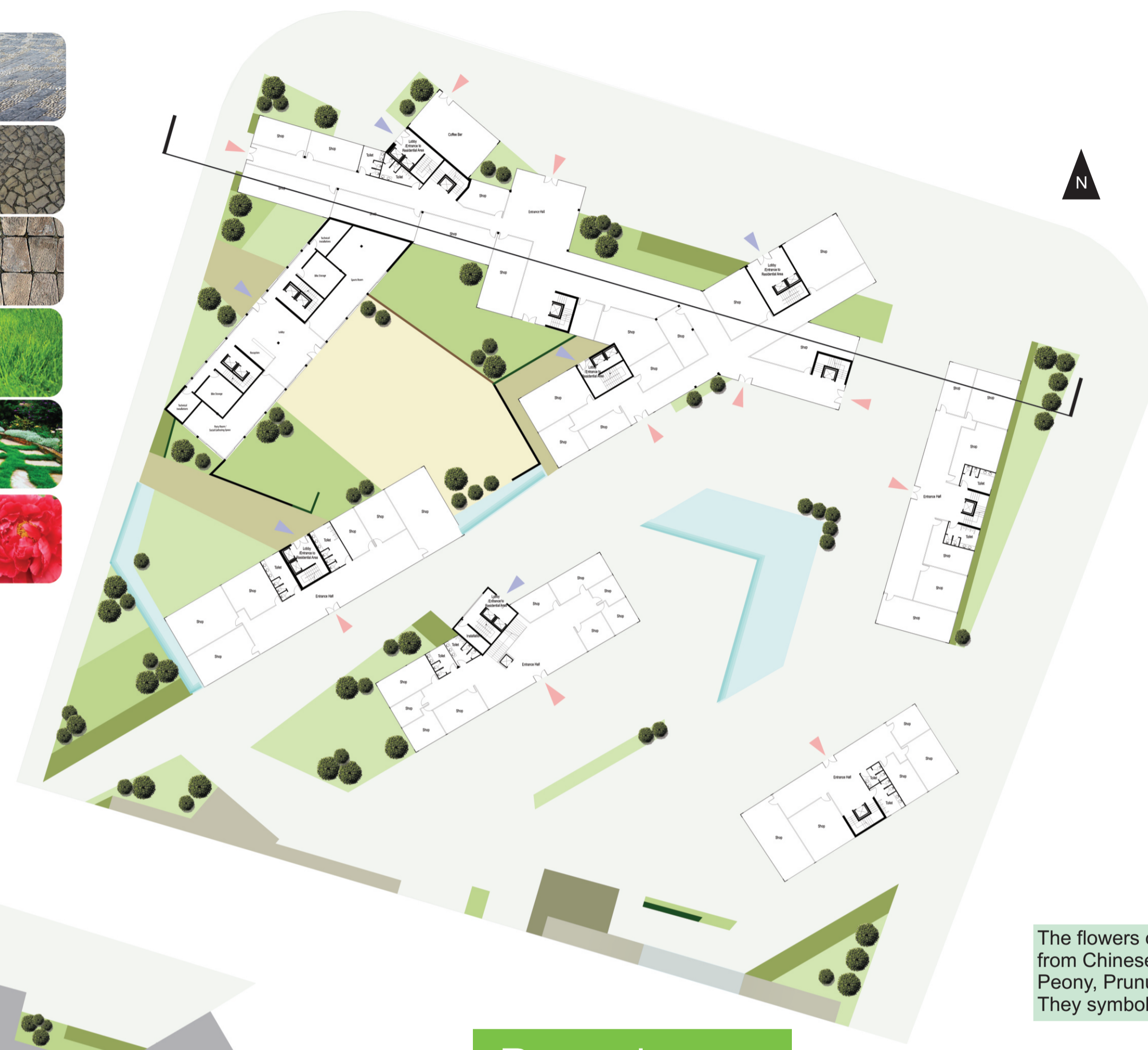


In Mandarin, character for «Chinese Garden» is made of the elements that are creating a Chinese Garden. Elements such as, Wall, Pavilion, Pool, Tree and Mountain. By studying these elements, I tried to design the landscape for the residential and commercial courtyards, by incorporating the elements in the Chinese garden that are suitable for this project.

Concrete & Stone Pavement for the Public Areas	
Stone Pavement Portuguese Style for the Central Courtyard	
Stone Pavement for the Entrance	
Grass	
Grass & Stone Pavement	
Flowers	

Residential Entrance

Commercial Entrance

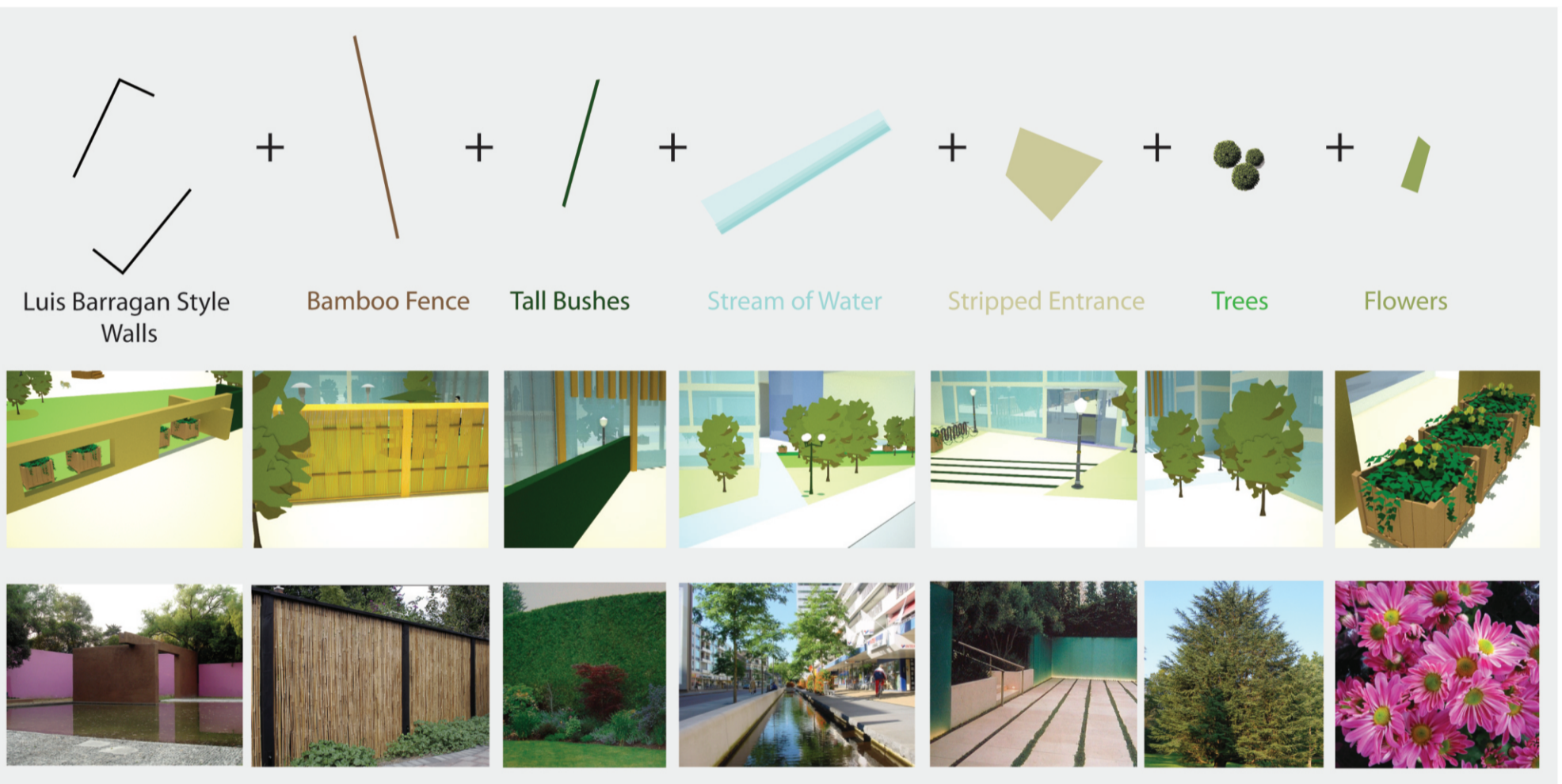


The types of trees used in this landscape were inspired by the Persian Garden Design, and I have chosen Platanus Orientalis: which is used to cast large shadows in the summer time. Cedar: which is used for its height, shadow creation and its green look in all 4 seasons.

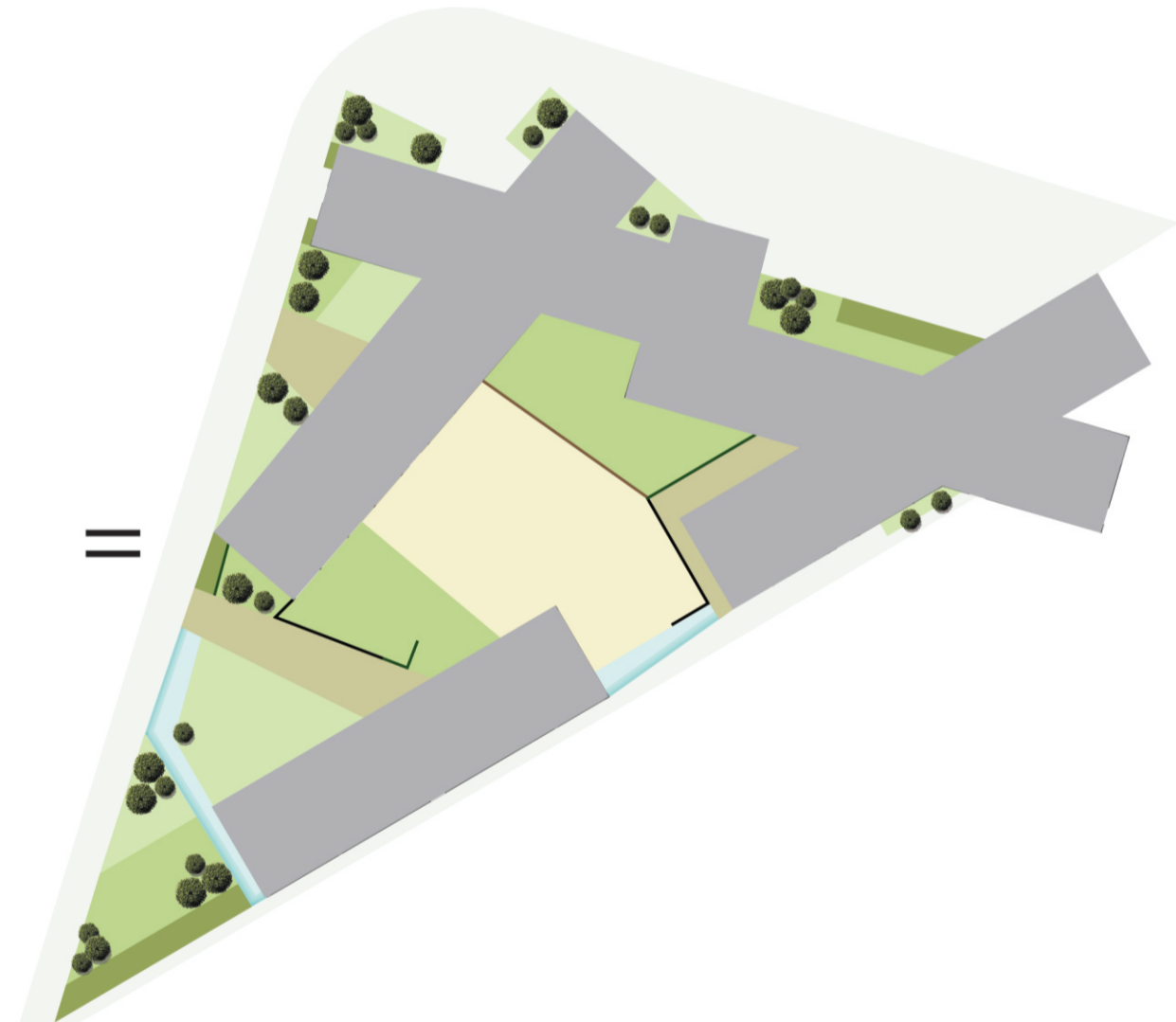


The flowers chosen for the landscape were taken from Chinese Garden design and there are: Peony, Prunus Mame, Prunus and Lotus. They symbolize, Purity, Renewal and Strength.

Landscape Elements in the Residential Complex



The Boundary of the Residential Complex is made with light elements to create a more Private space for the Residents. Light structures and visual techniques as shown above are used to create this private spaces.



Renders

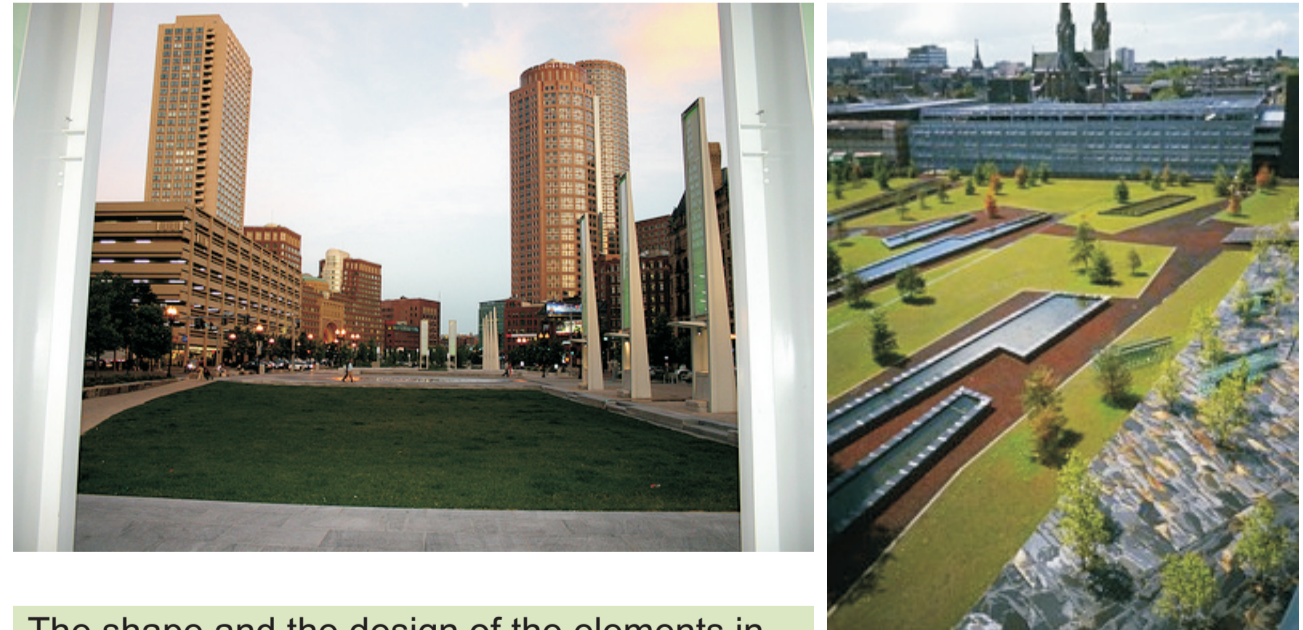


Public Elements



There are elements in the public spaces, that will be used to improve the quality and the standard of the living in the area. By creating a nice and realzing environment, we can make the residents happier and healthier.

Inspirations



The shape and the design of the elements in the landscape, was greatly influenced by the West8's Interpolis Garden in Tilburg, Netherlands. (on the right) The connectivity between different neighborhoods through the landscape was inspired by the Rose Fitzgerald Kennedy Greenway in Boston MA, USA.