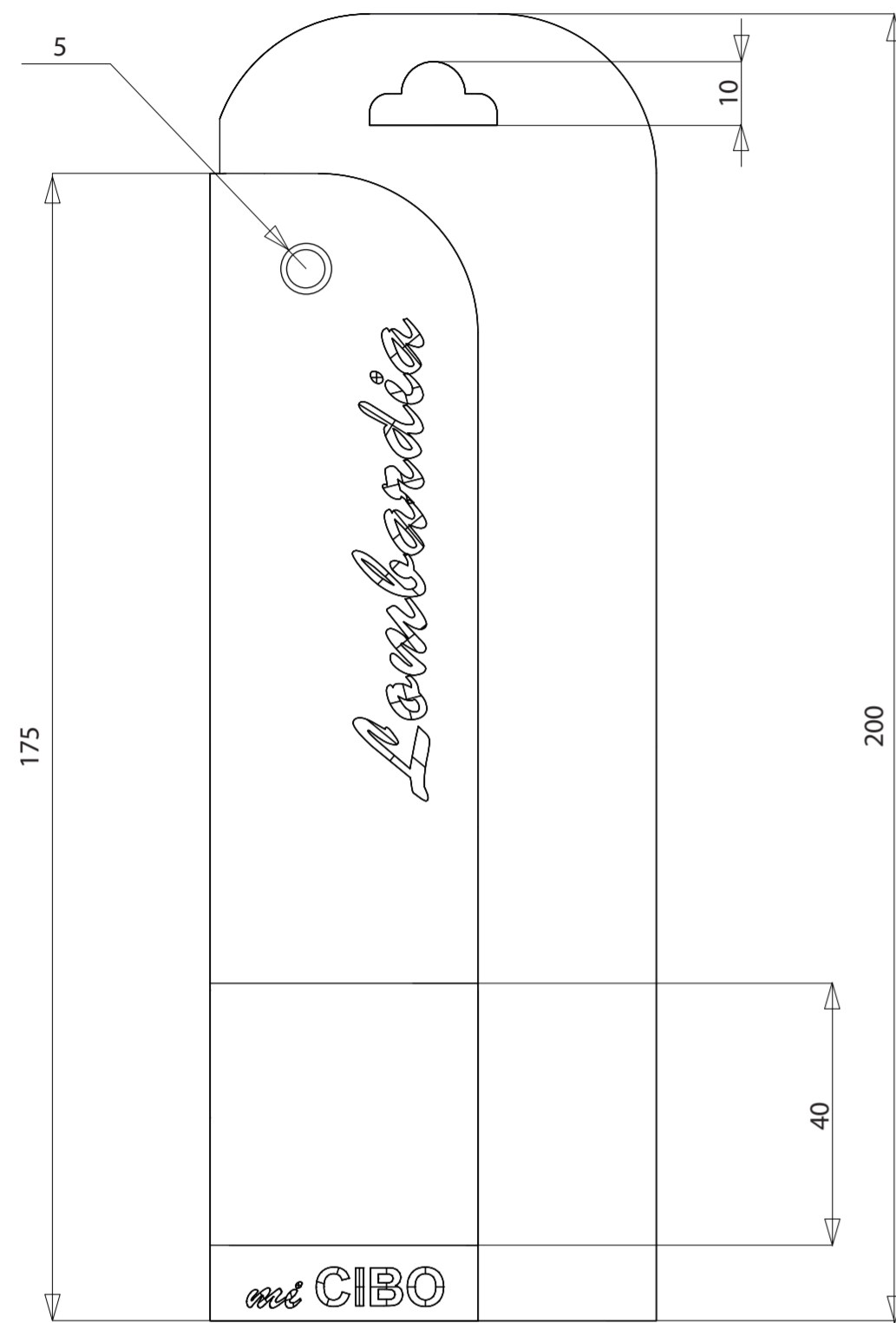
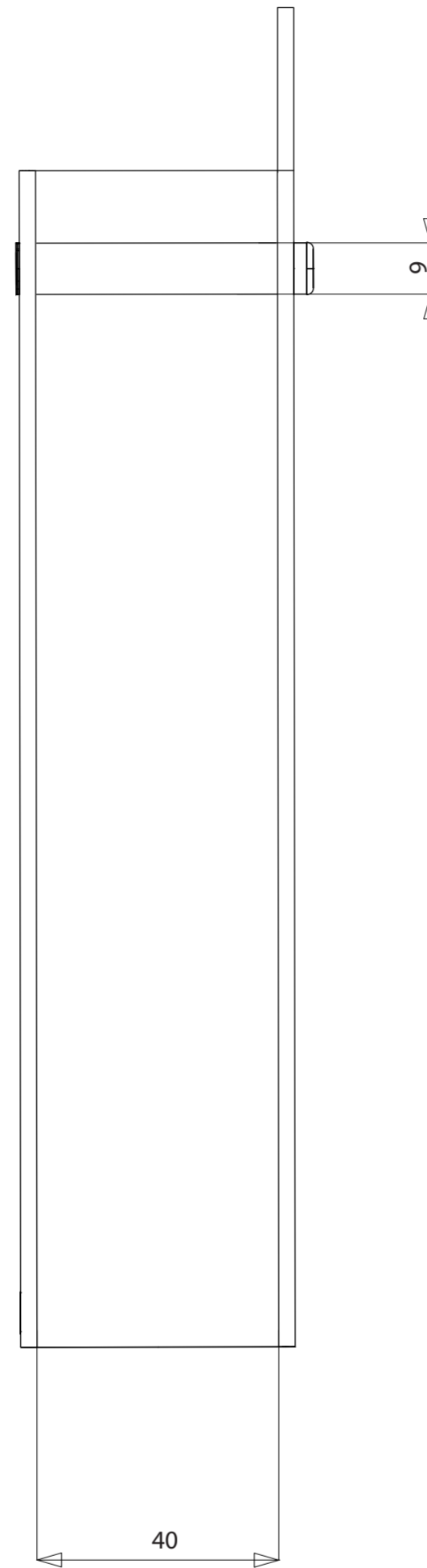


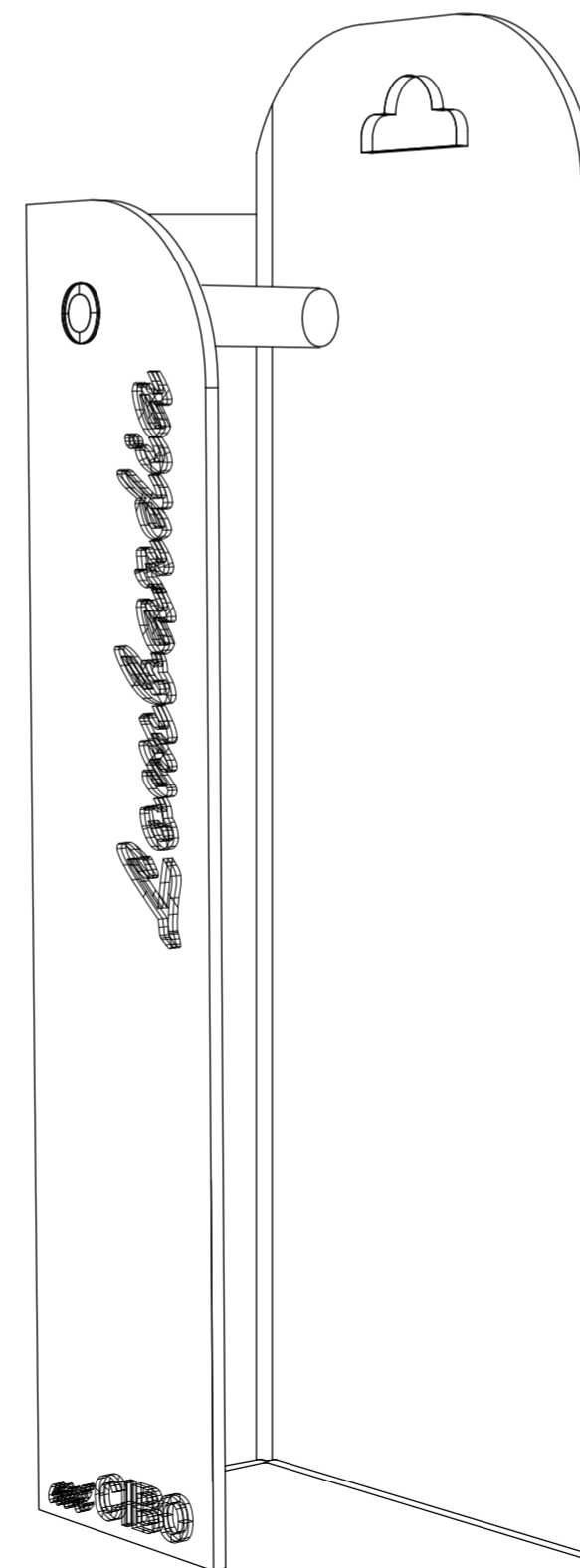
VISTA FRONTALE



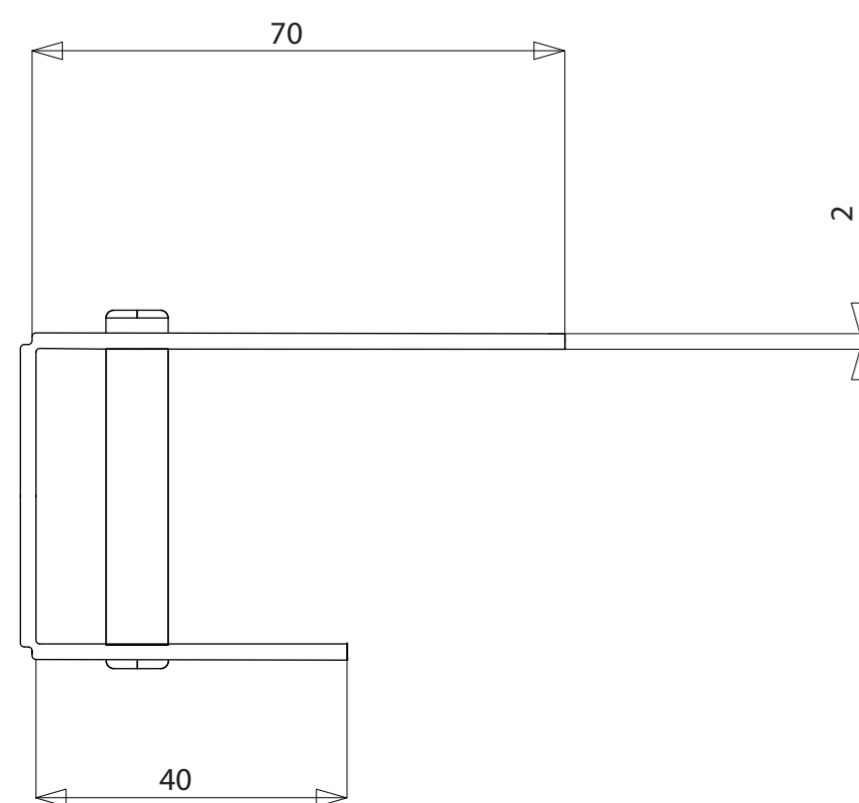
VISTA LATERALE



ASSONOMETRIA



VISTA SUPERIORE

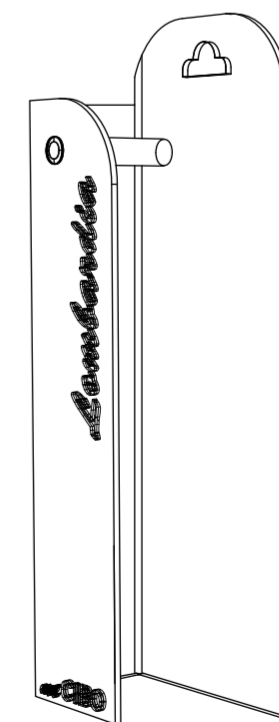


Politecnico di Milano - Facolta' del Design
Laurea magistrale in Disegno Industriale

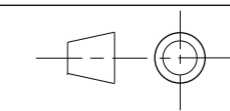
Tesi di Laurea
**mi CIBO : sistema di packaging per
Milano expo 2015**

Silvia Buttironi - 724815
Relatore: Giovanna Piccinno

AA 2008/2009 _ 21 Luglio 2010



SCALA 1:1



DISEGNO DI PRODUZIONE

Pack regionale