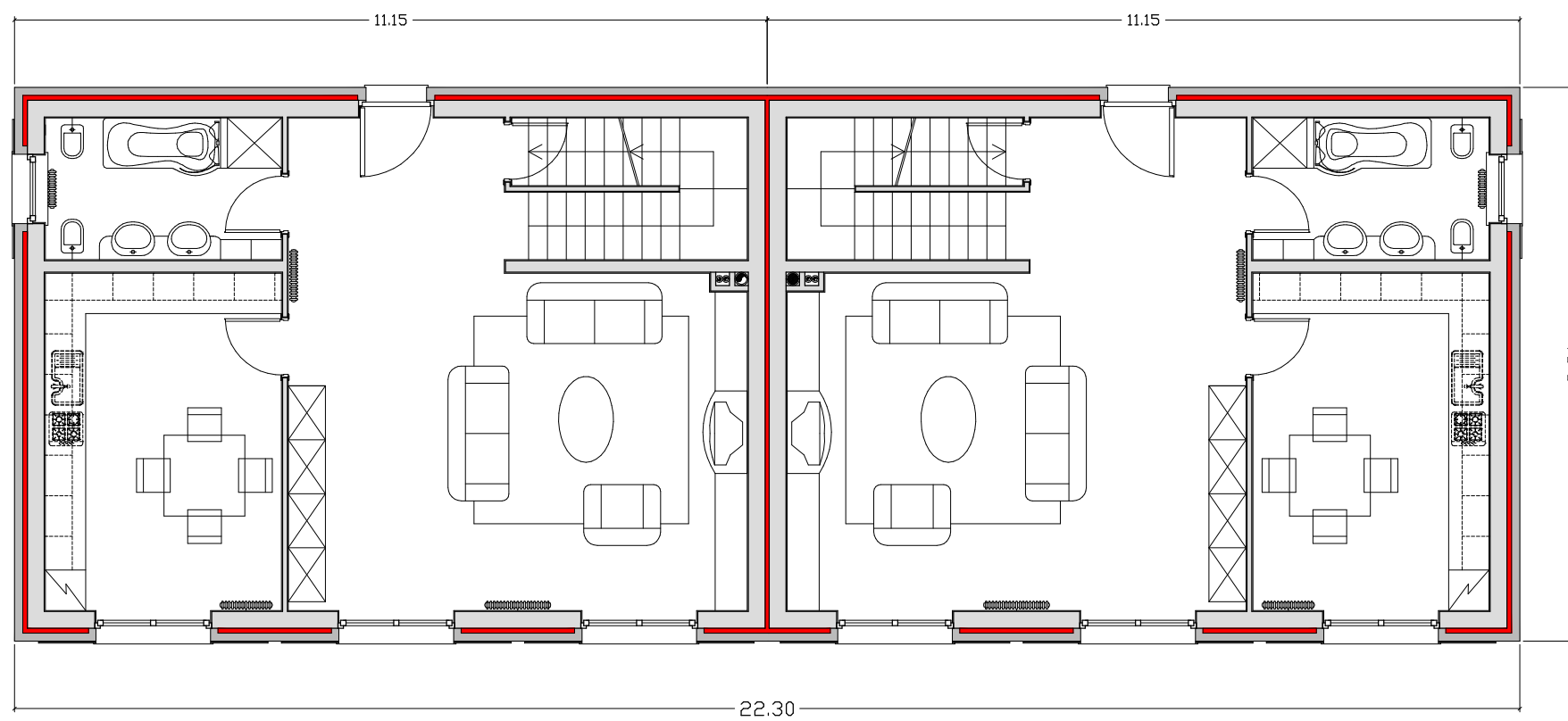


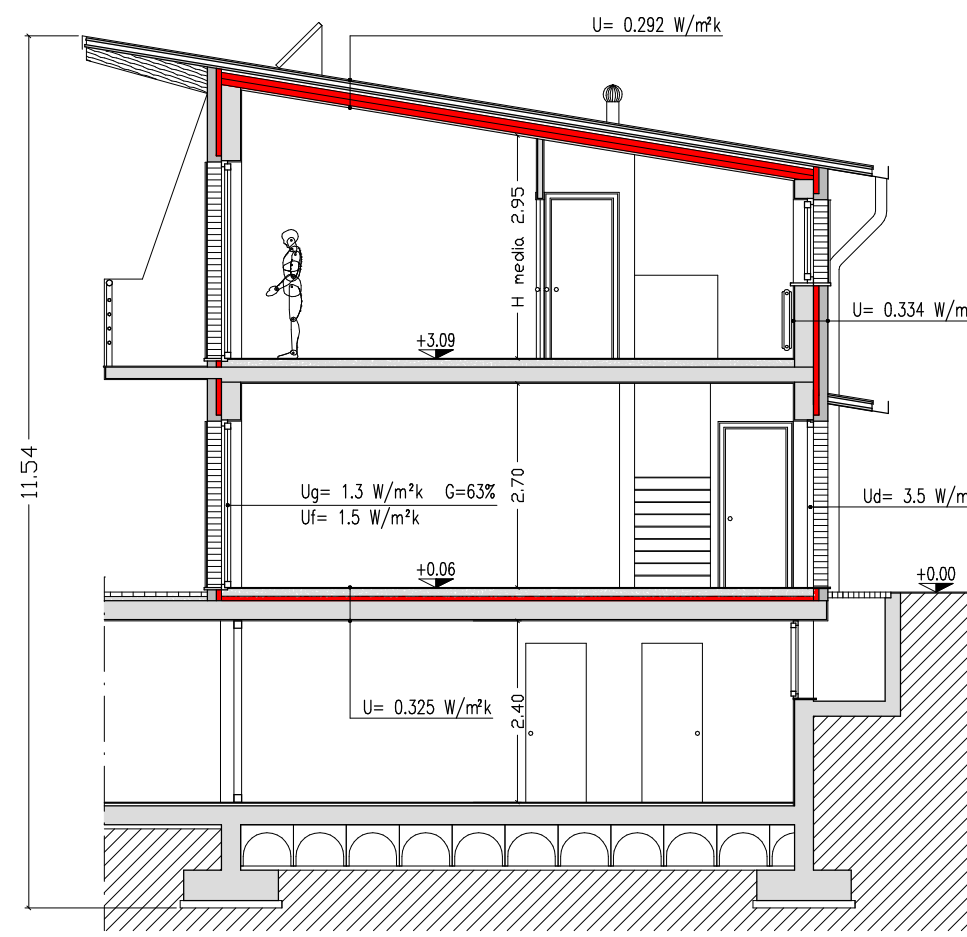
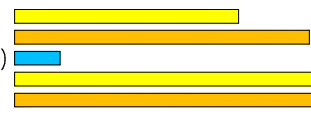
INVOLUCRO DELLE VILLE BIFAMILIARI A CONFRONTO

BIFAMILIARE 1 - Dlgs 192/05 e 311/06

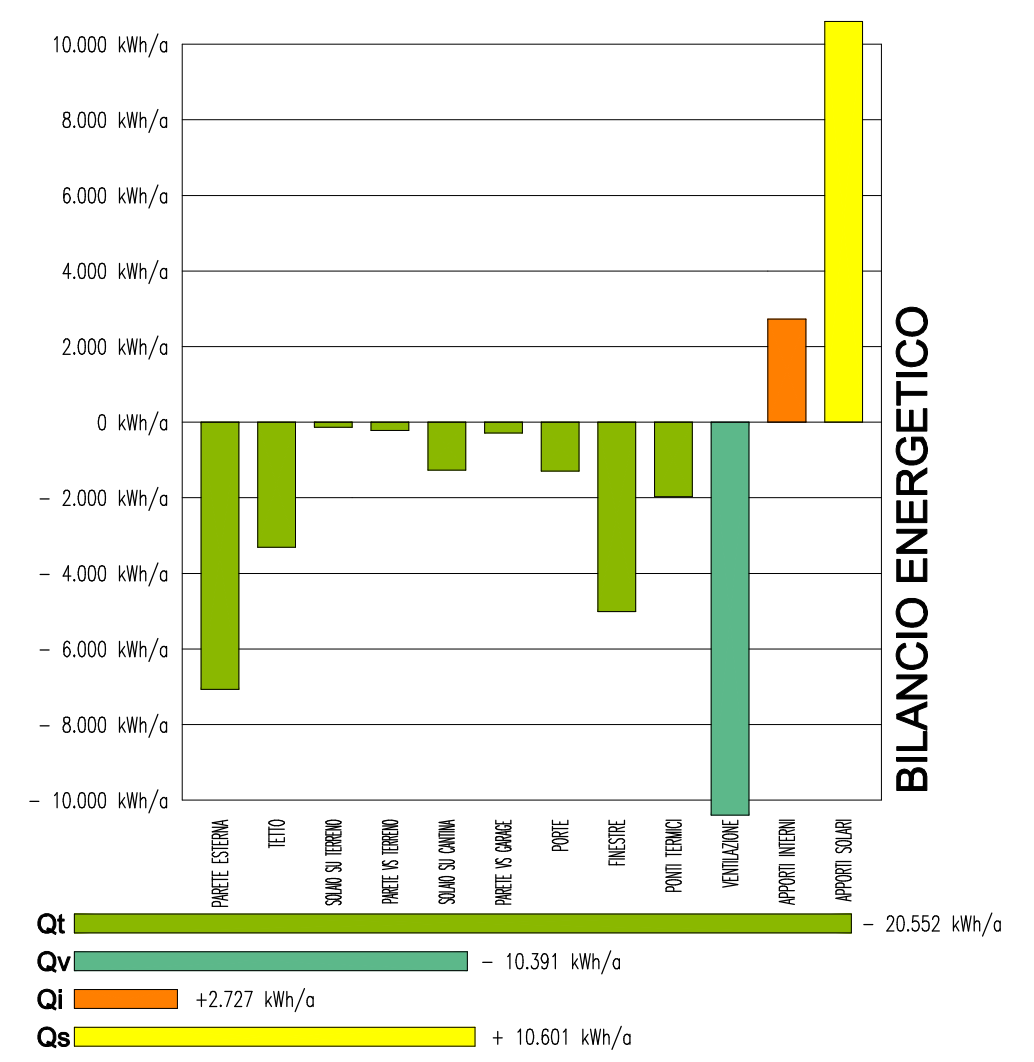


PIANTA P.T.

SUP. NETTA RISCALDATA: 296,30 mq
 SUP. LORDA INVOLUCRO TERMICO: 389,70 mq
 PERMEABILITA' ALL'ARIA DELL'INVOLUCRO EDILIZIO: MEDIO-BASSA (n50: 3,5/h)
 VOL. NETTO RISCALDATA: 834,30 mc
 VOL. LORDO INVOLUCRO TERMICO: 1.294,0 mc

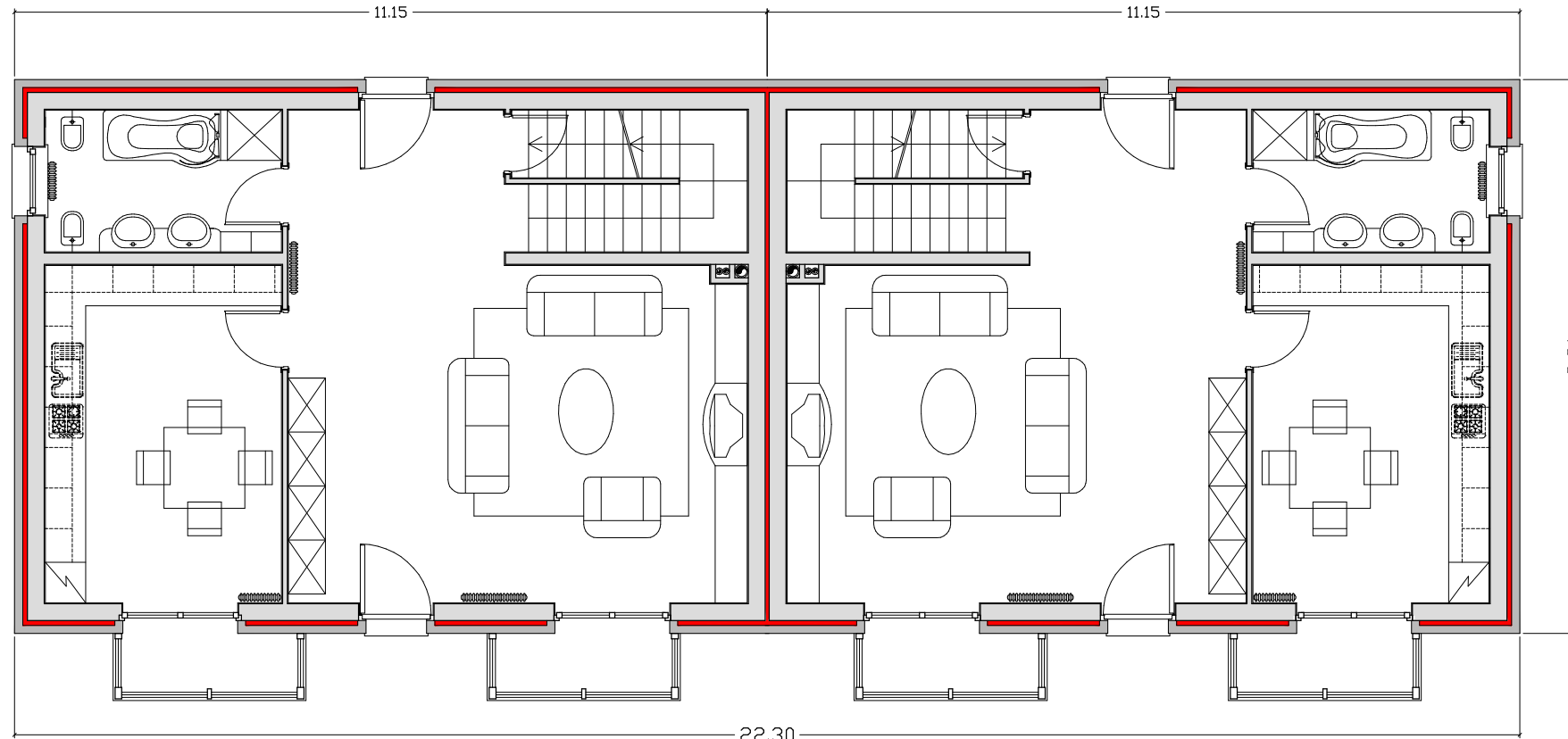


SEZIONE A-A



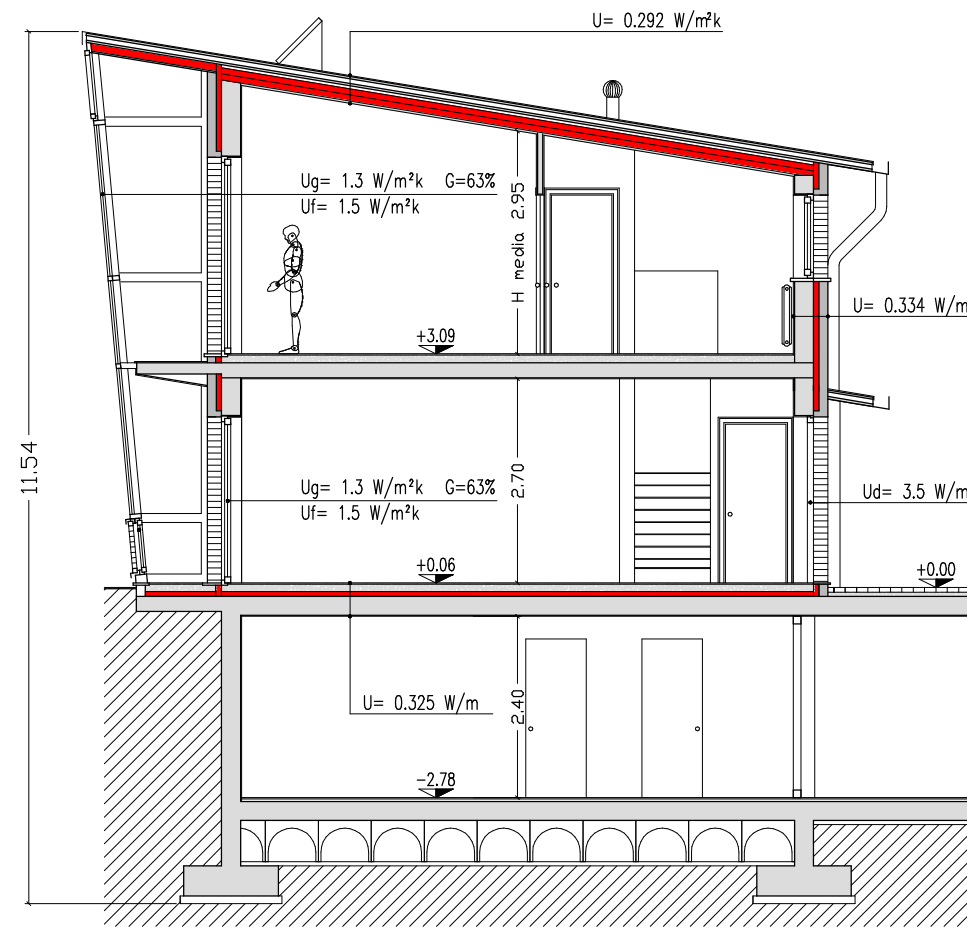
FABBISOGNO ENERGETICO: 60 kWh/m²a

BIFAMILIARE 2 - Dlgs 192/05 e 311/06 con SERRA SOLARE

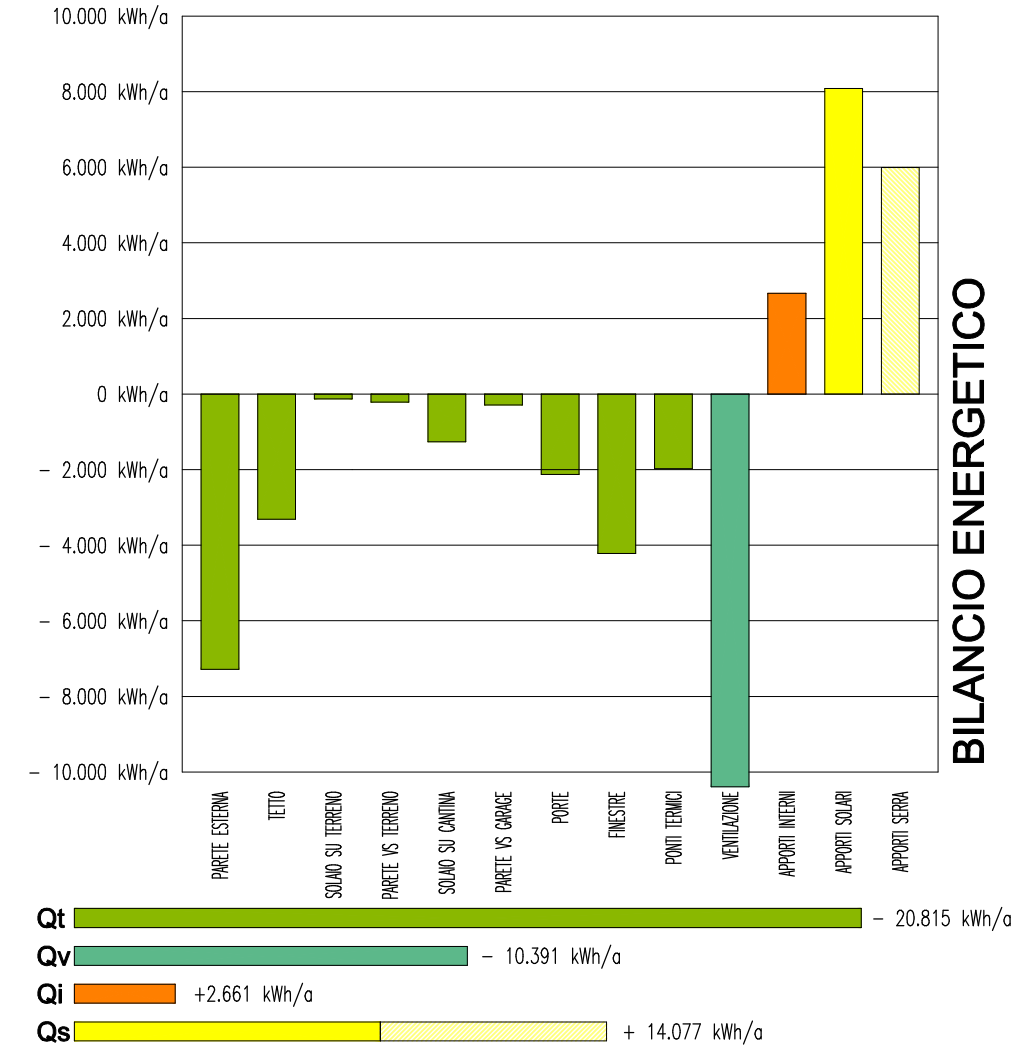


PIANTA P.T.

SUP. NETTA RISCALDATA: 296,30 mq
 SUP. LORDA INVOLUCRO TERMICO: 389,70 mq
 PERMEABILITA' ALL'ARIA DELL'INVOLUCRO EDILIZIO: MEDIO-BASSA (n50: 3,5/h)
 VOL. NETTO RISCALDATA: 834,30 mc
 VOL. LORDO INVOLUCRO TERMICO: 1.294,0 mc

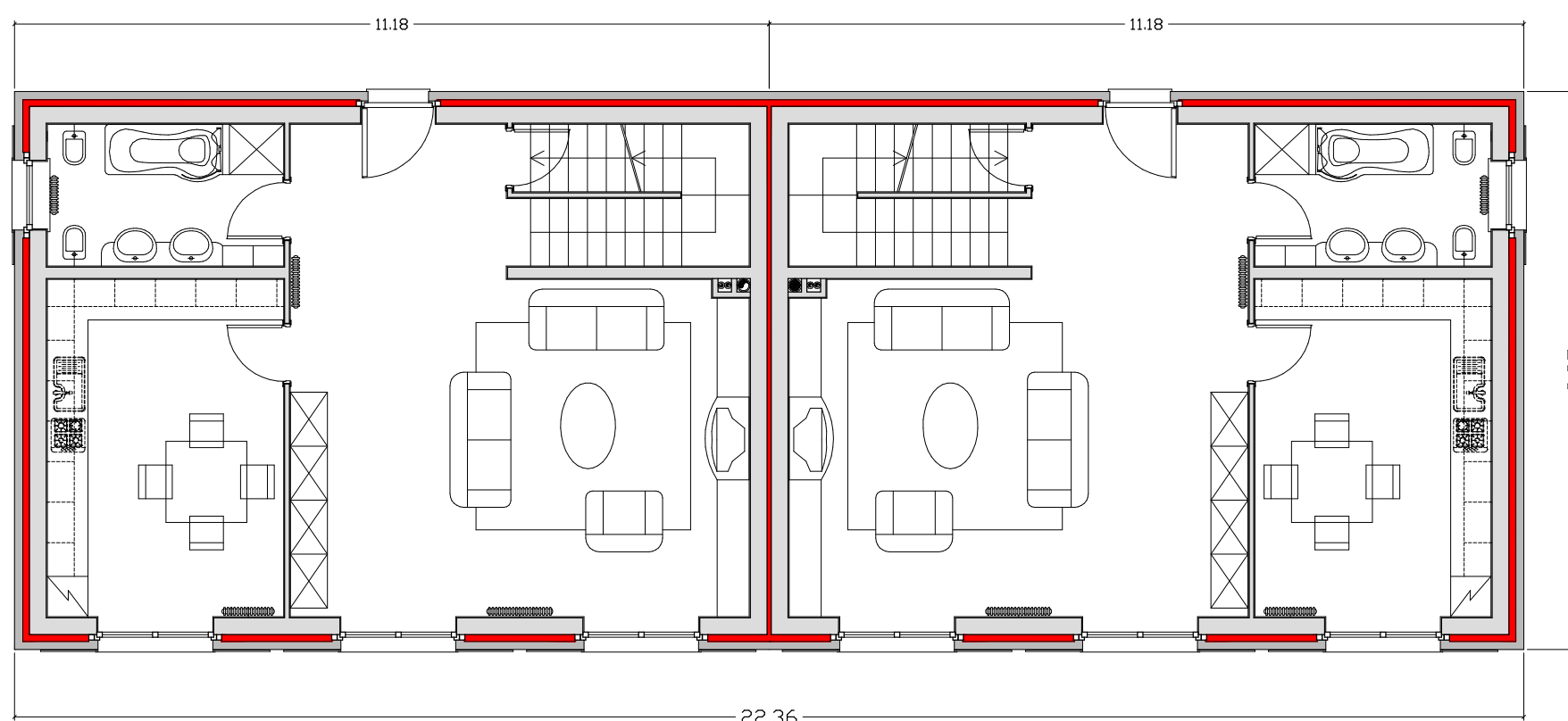


SEZIONE A-A



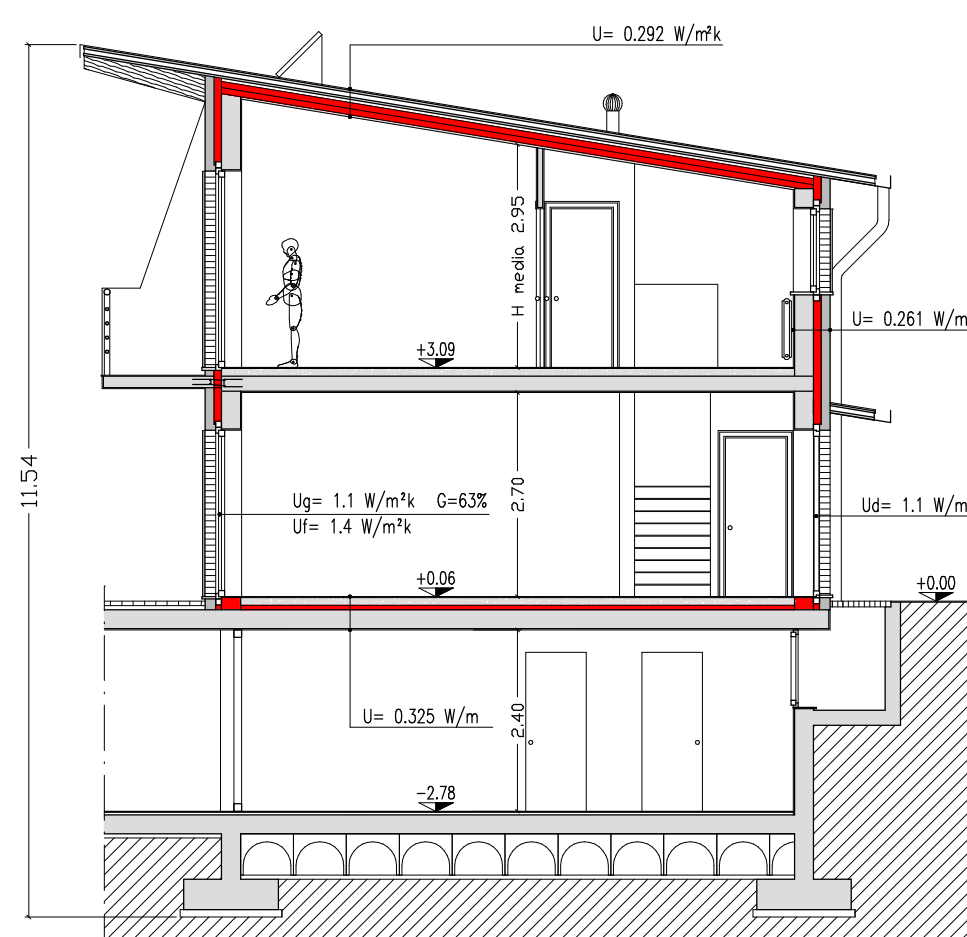
FABBISOGNO ENERGETICO: 54 kWh/m²a

BIFAMILIARE 3 - CasaClima B

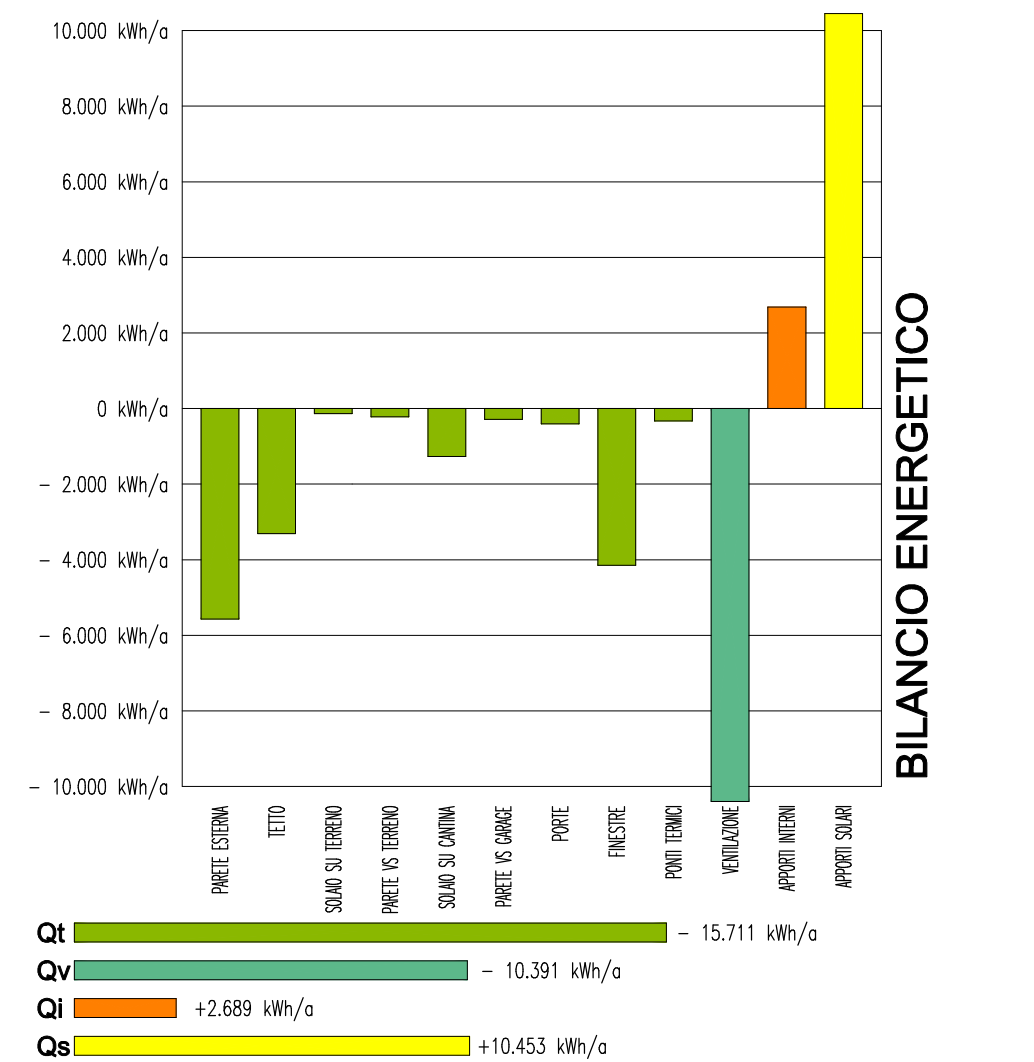


PIANTA P.T.

SUP. NETTA RISCALDATA: 296,30 mq
 SUP. LORDA INVOLUCRO TERMICO: 383,50 mq
 PERMEABILITA' ALL'ARIA DELL'INVOLUCRO EDILIZIO: MEDIA (n50: 2/h)
 VOL. NETTO RISCALDATA: 834,30 mc
 VOL. LORDO INVOLUCRO TERMICO: 1.306,5 mc

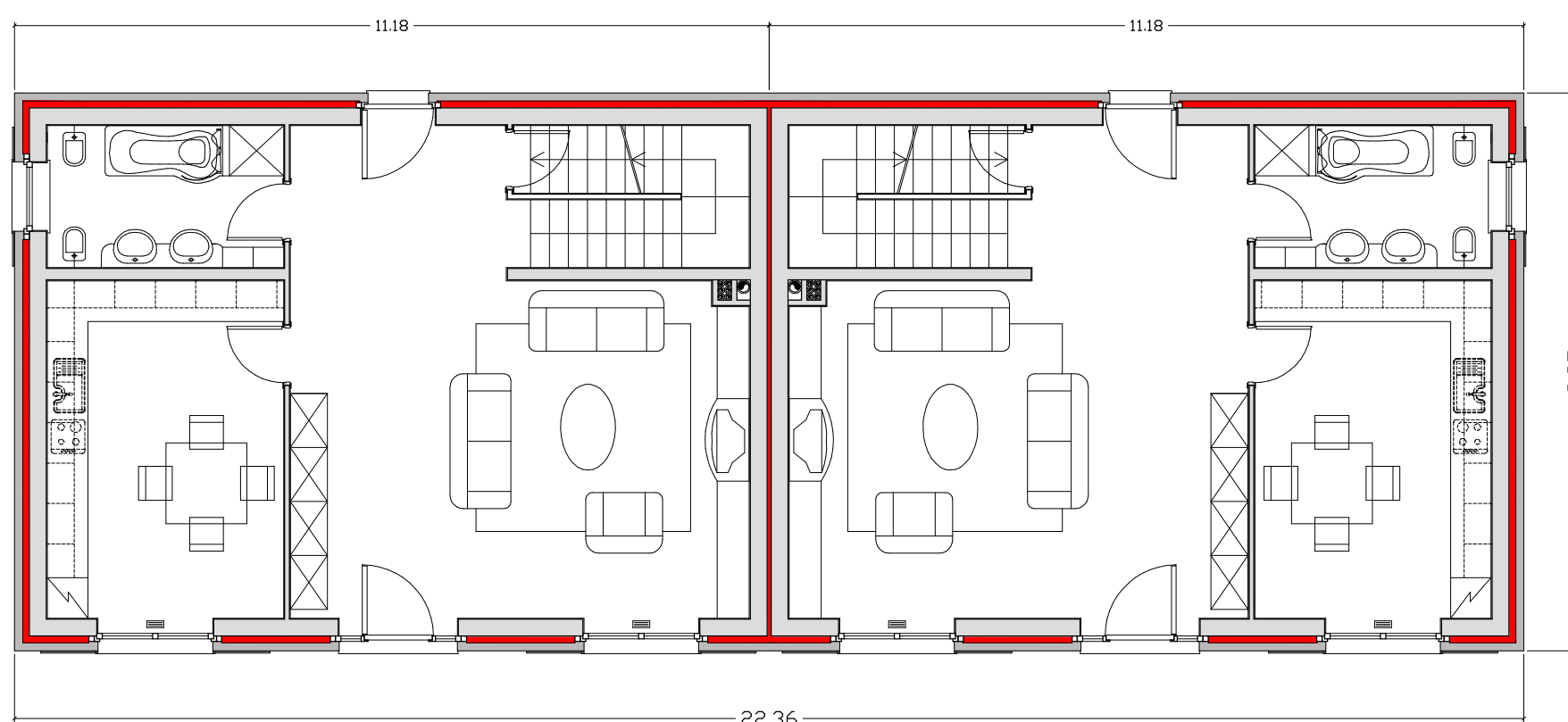


SEZIONE A-A



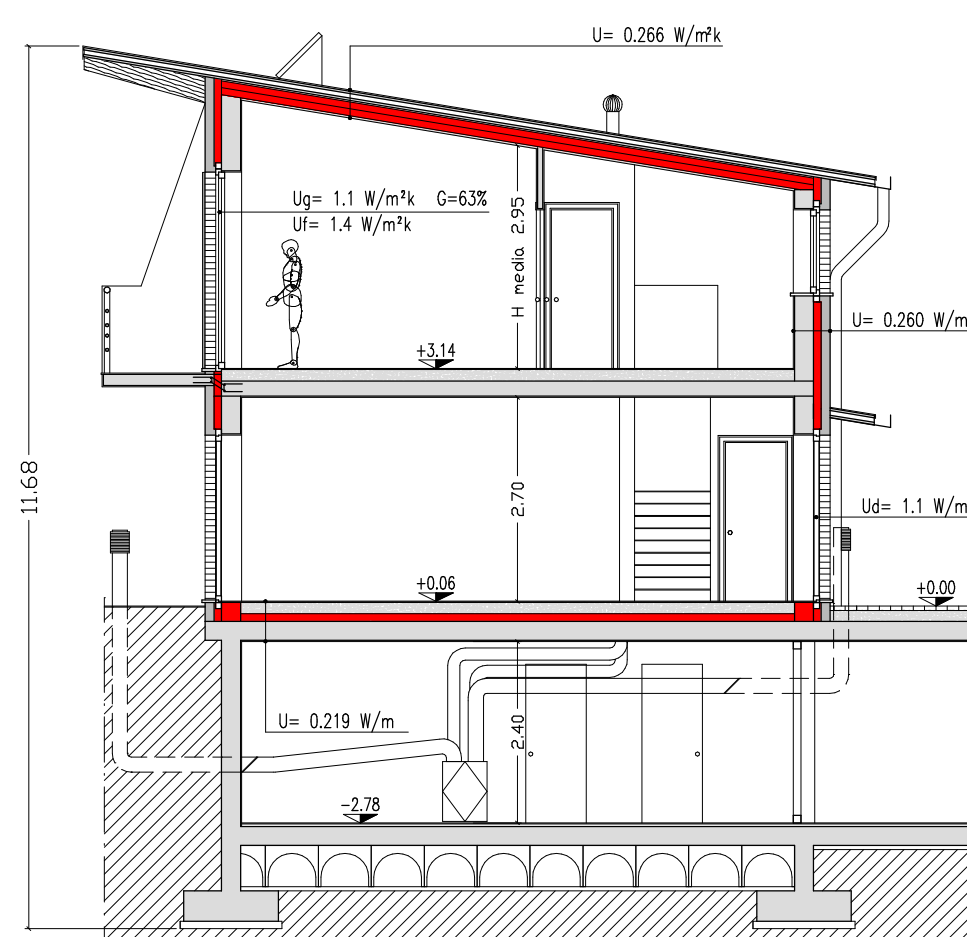
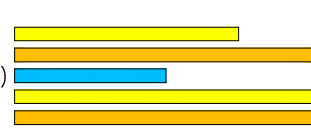
FABBISOGNO ENERGETICO: 45 kWh/m²a

BIFAMILIARE 4 - CasaClima A
 UTILIZZO PER MINERGIE (BIFAMILIARE 6)

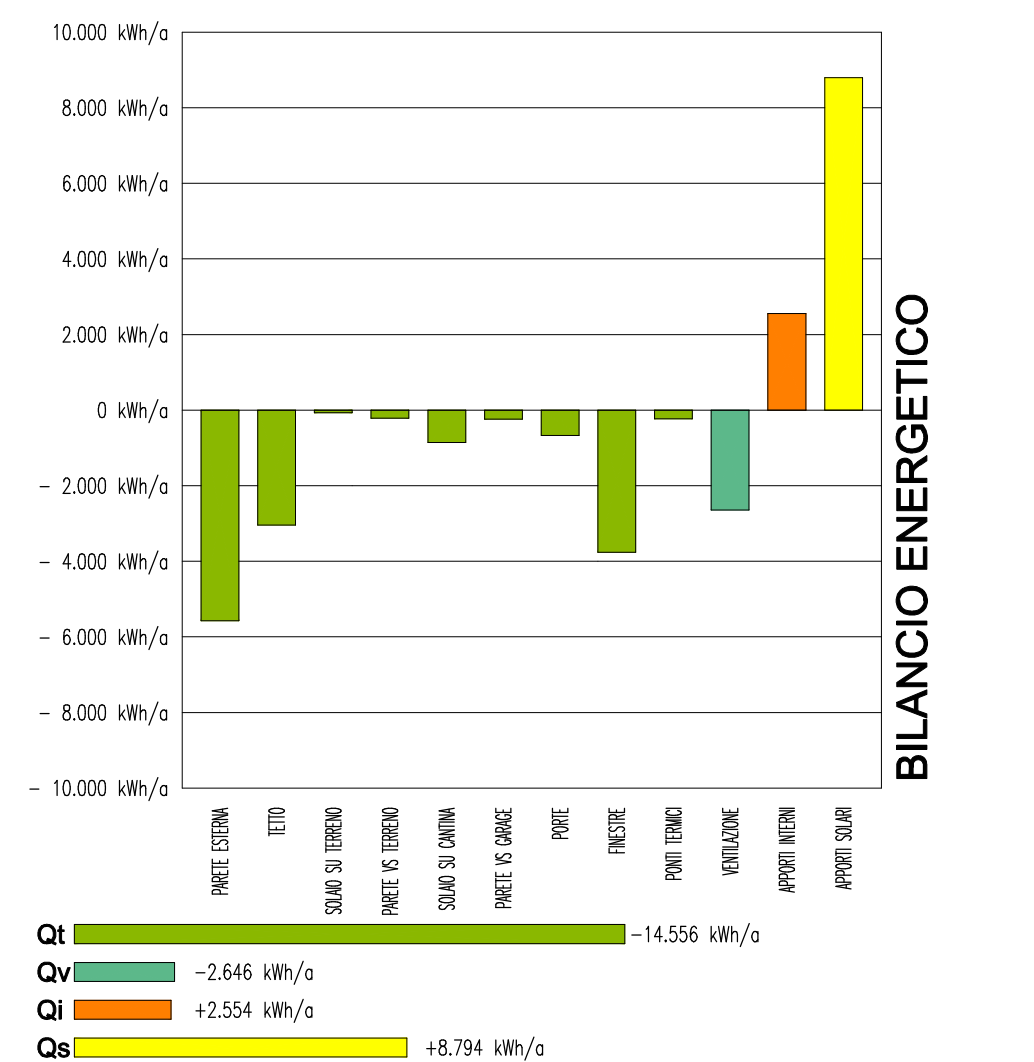


PIANTA P.T.

SUP. NETTA RISCALDATA: 296,30 mq
 SUP. LORDA INVOLUCRO TERMICO: 363,50 mq
 PERMEABILITA' ALL'ARIA DELL'INVOLUCRO EDILIZIO: MOLTO ELEVATA (n50: 1/h)
 VOL. NETTO RISCALDATA: 834,30 mc
 VOL. LORDO INVOLUCRO TERMICO: 1.306,2 mc

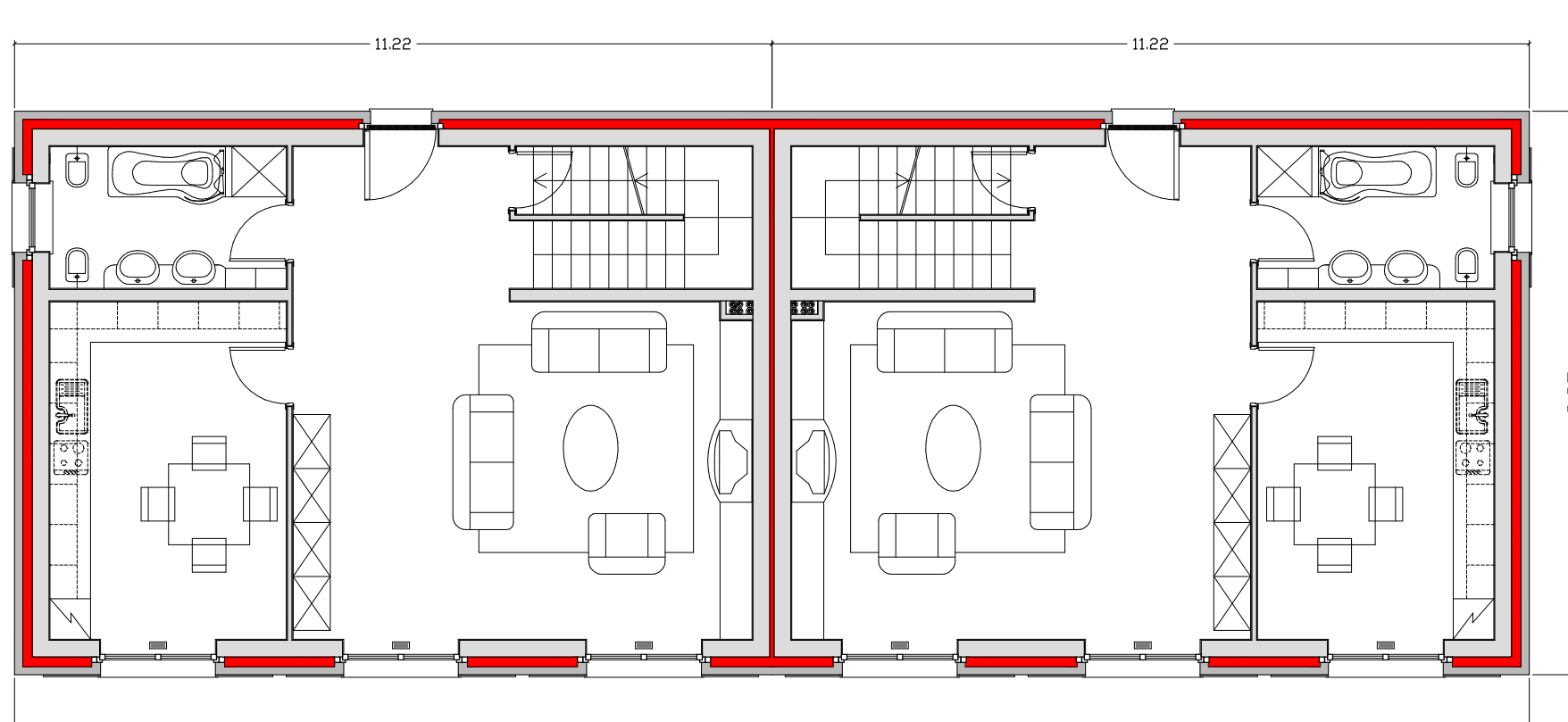


SEZIONE A-A



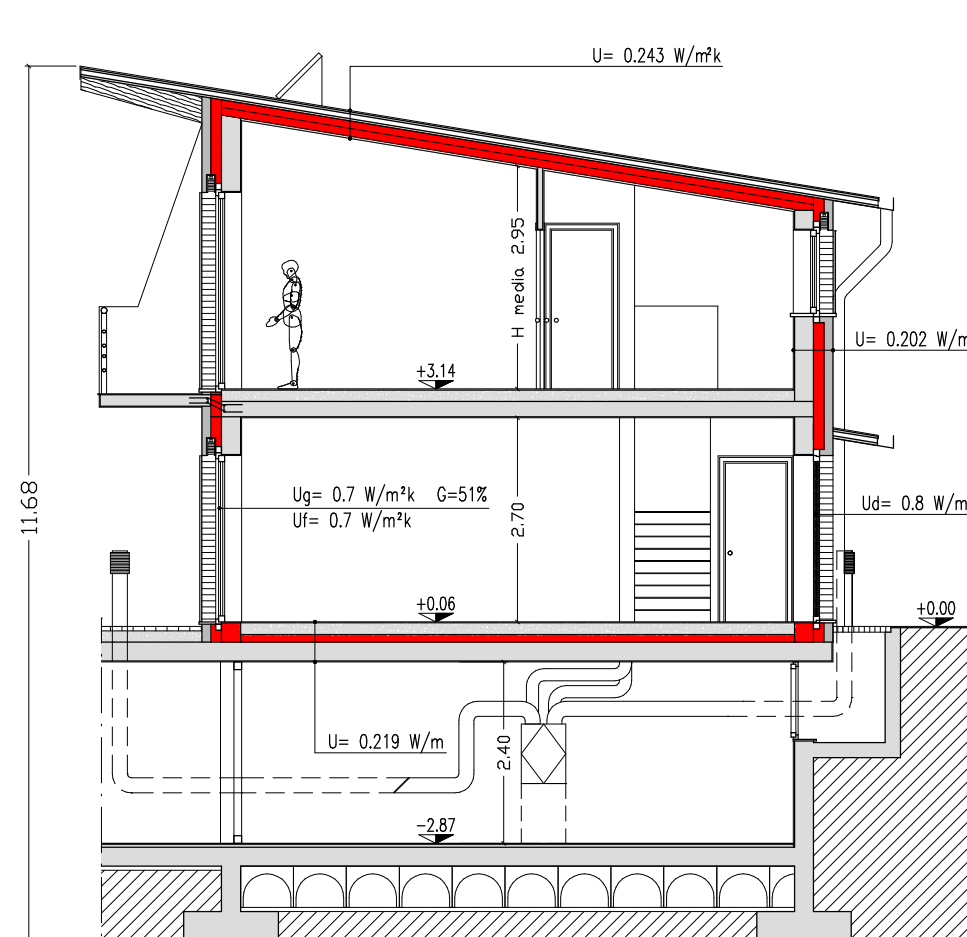
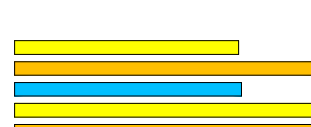
FABBISOGNO ENERGETICO: 21 kWh/m²a

BIFAMILIARE 5 - PASSIVHAUS

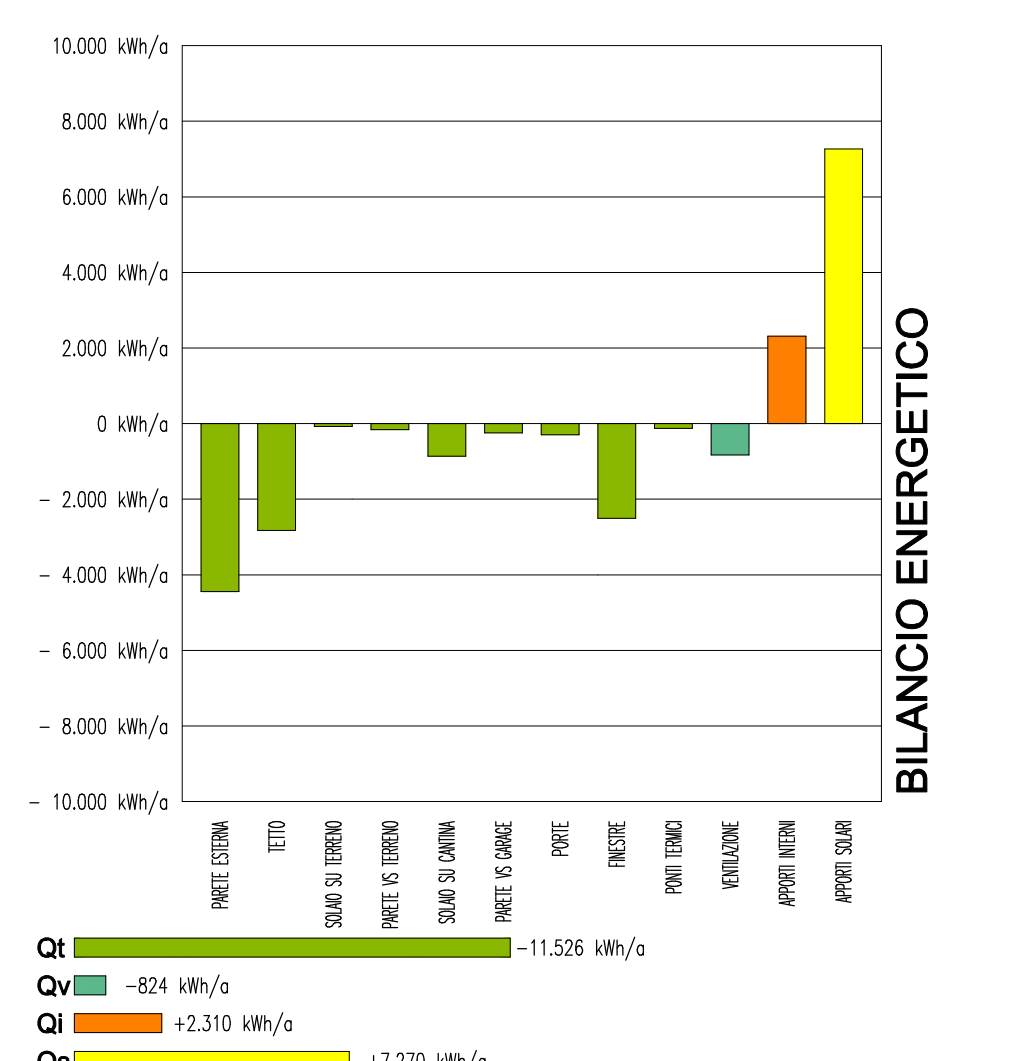


PIANTA P.T.

SUP. NETTA RISCALDATA: 296,30 mq
 SUP. LORDA INVOLUCRO TERMICO: 399,20 mq
 PERMEABILITA' ALL'ARIA DELL'INVOLUCRO EDILIZIO: OTTIMA (n50: 0,6/h)
 VOL. NETTO RISCALDATA: 834,30 mc
 VOL. LORDO INVOLUCRO TERMICO: 1.343,8 mc



SEZIONE A-A



FABBISOGNO ENERGETICO: 9 kWh/m²a