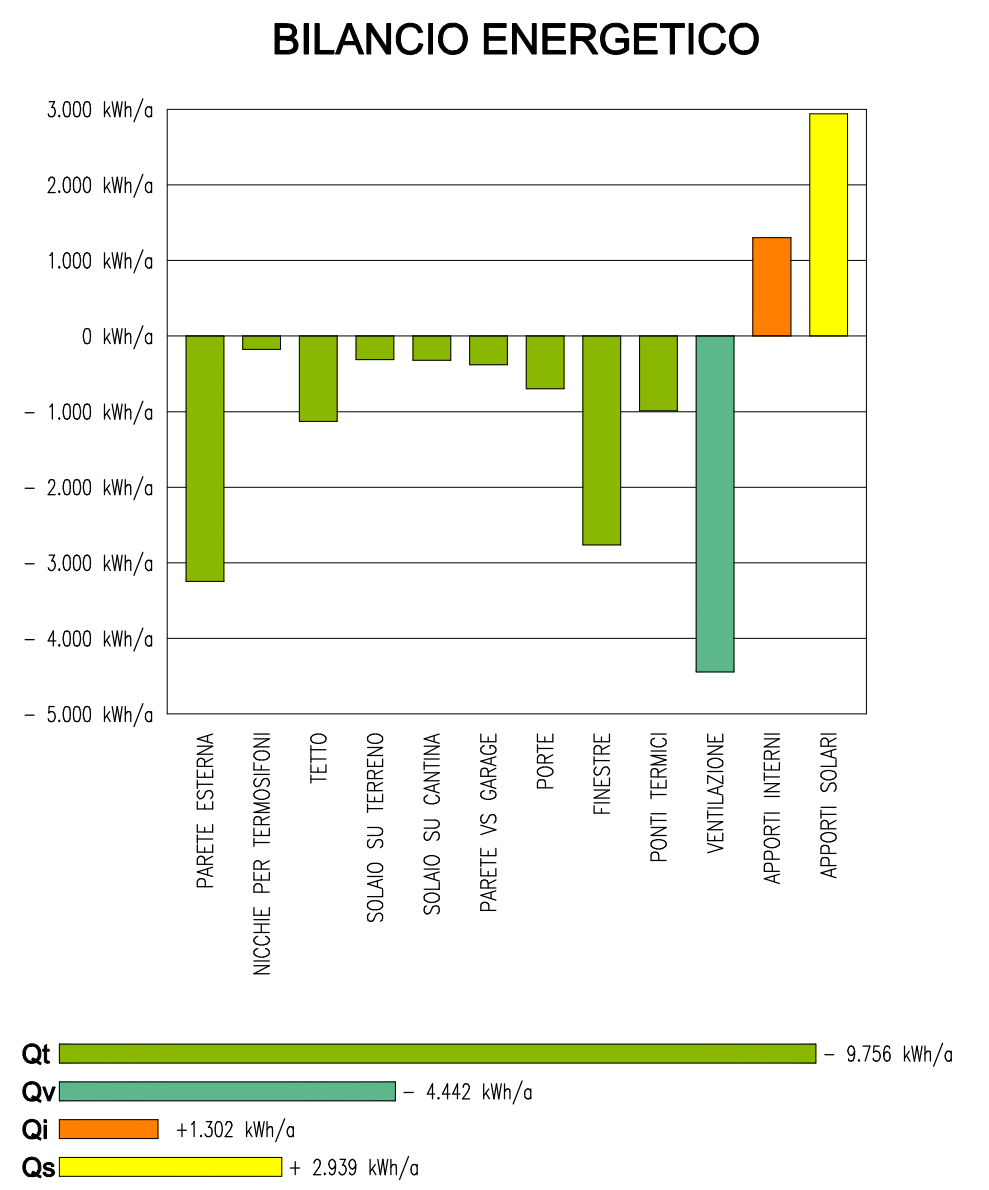
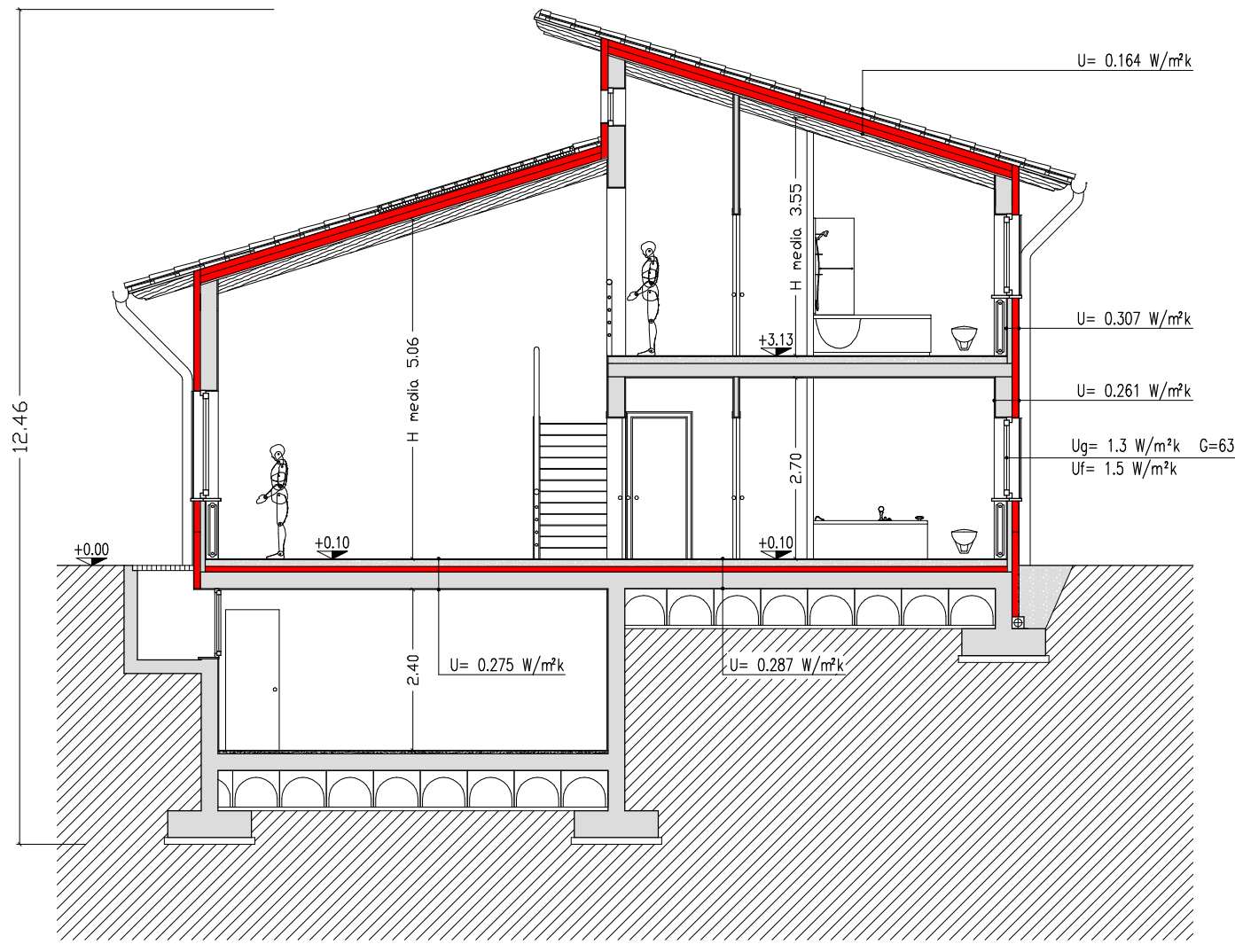
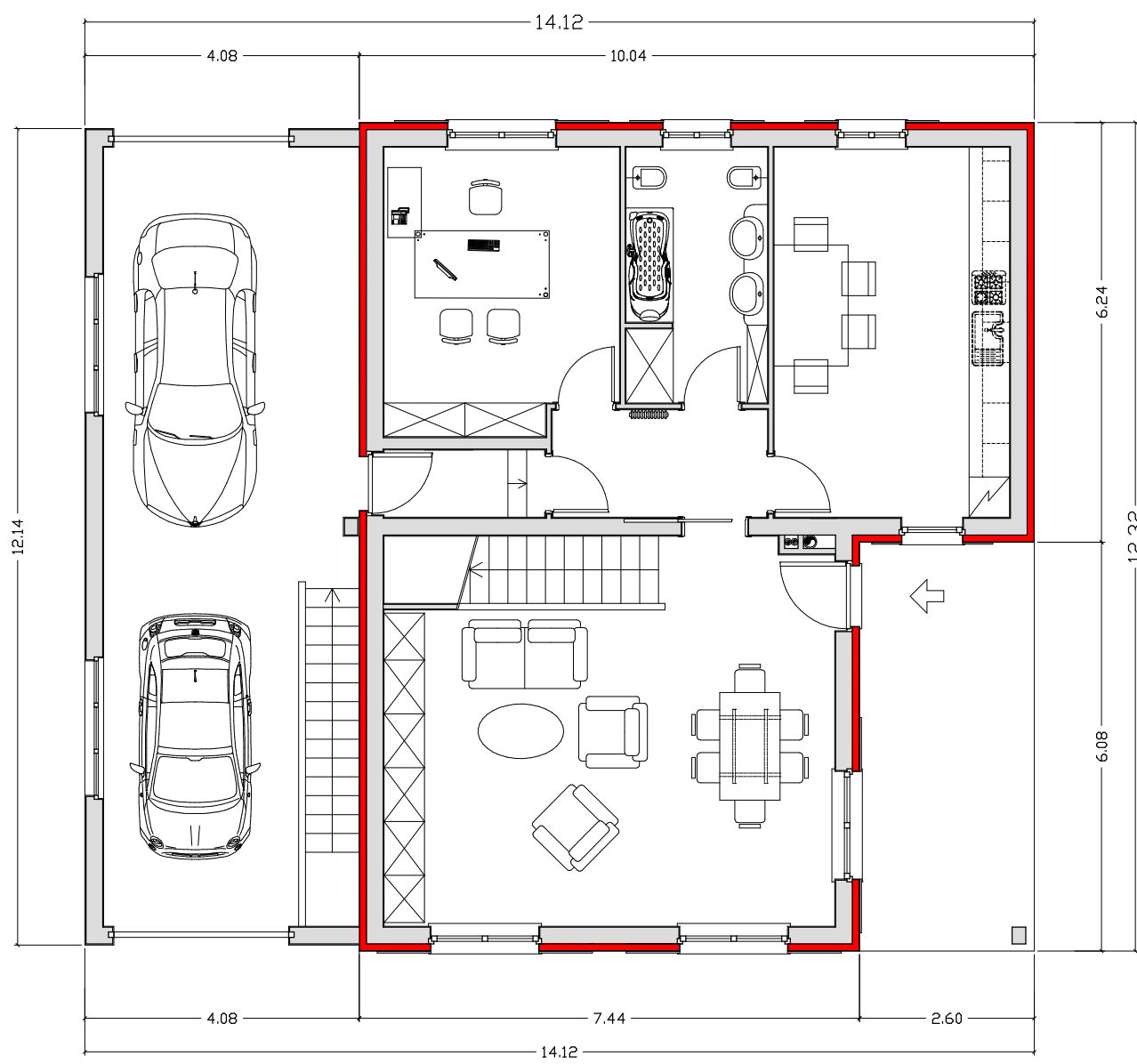
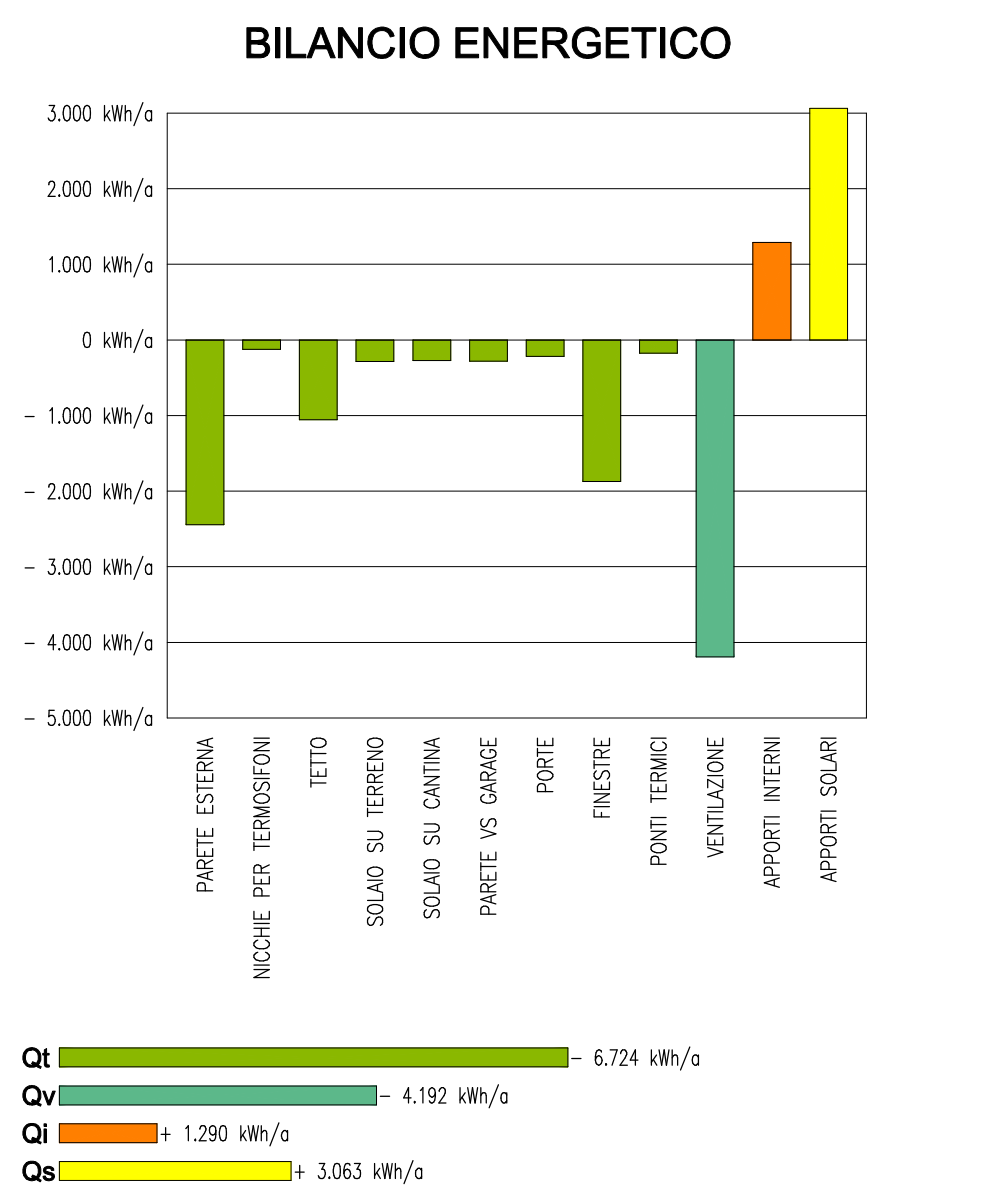
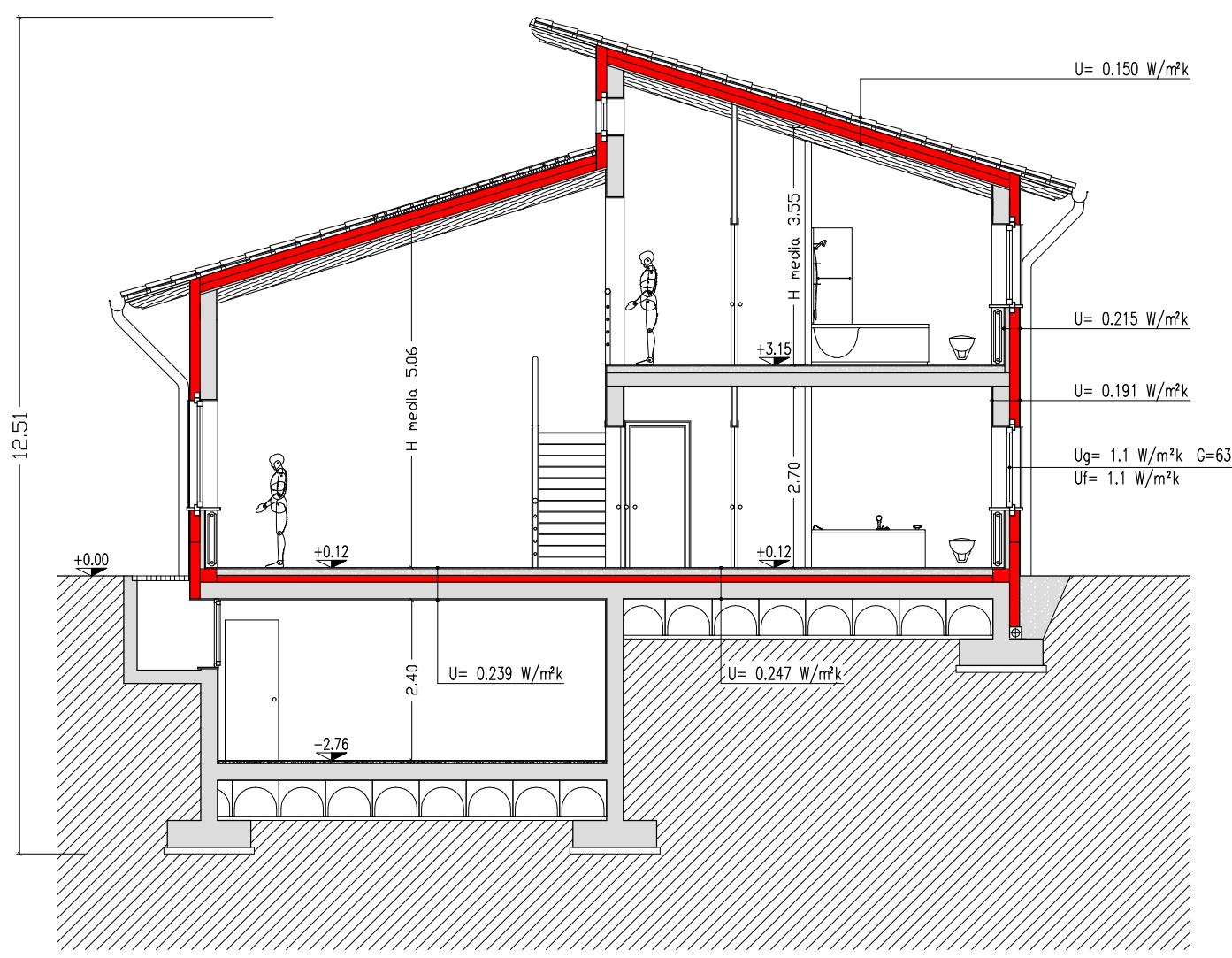
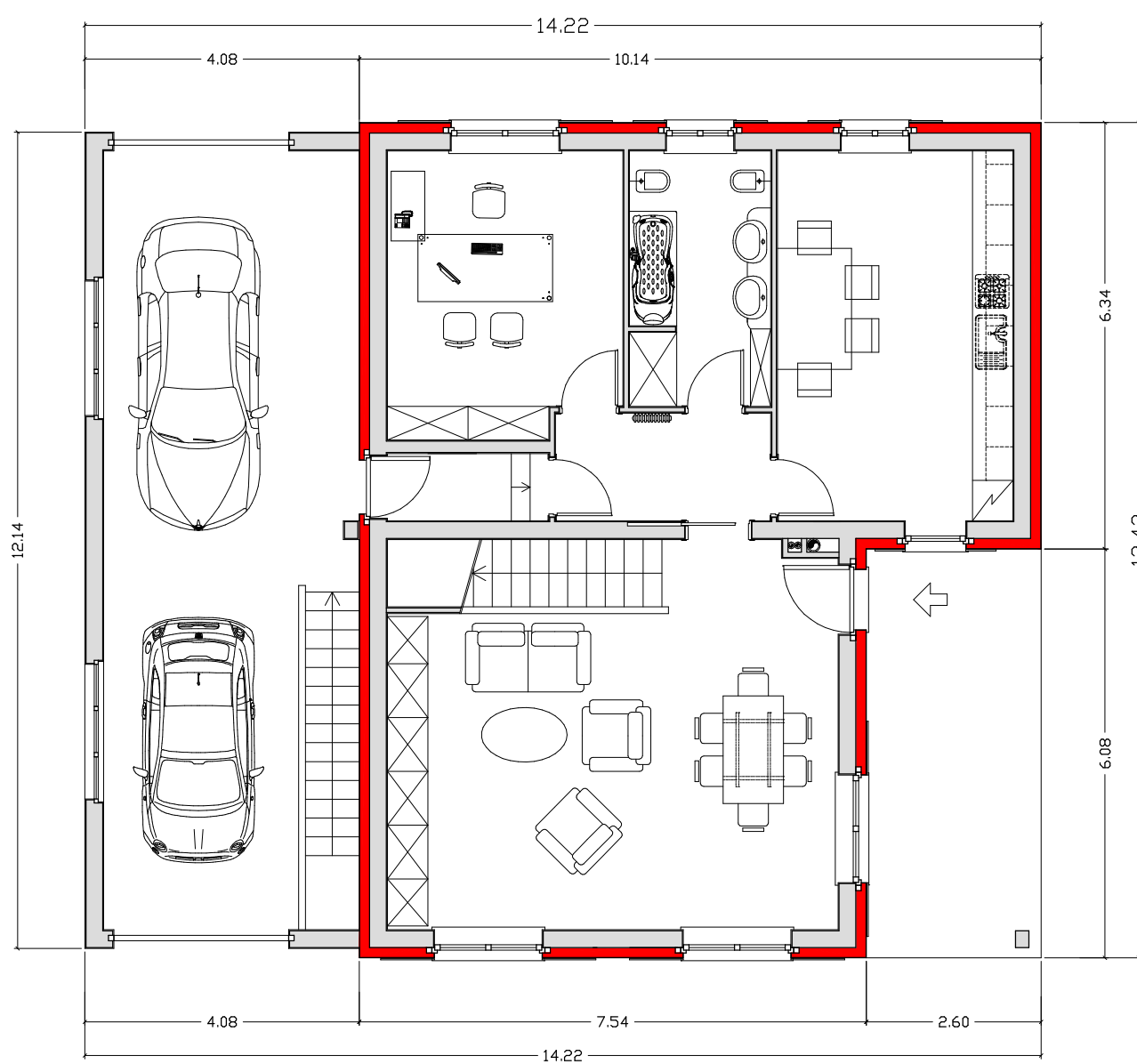


# INVOLUCRO DELLE VILLE SINGOLE A CONFRONTO

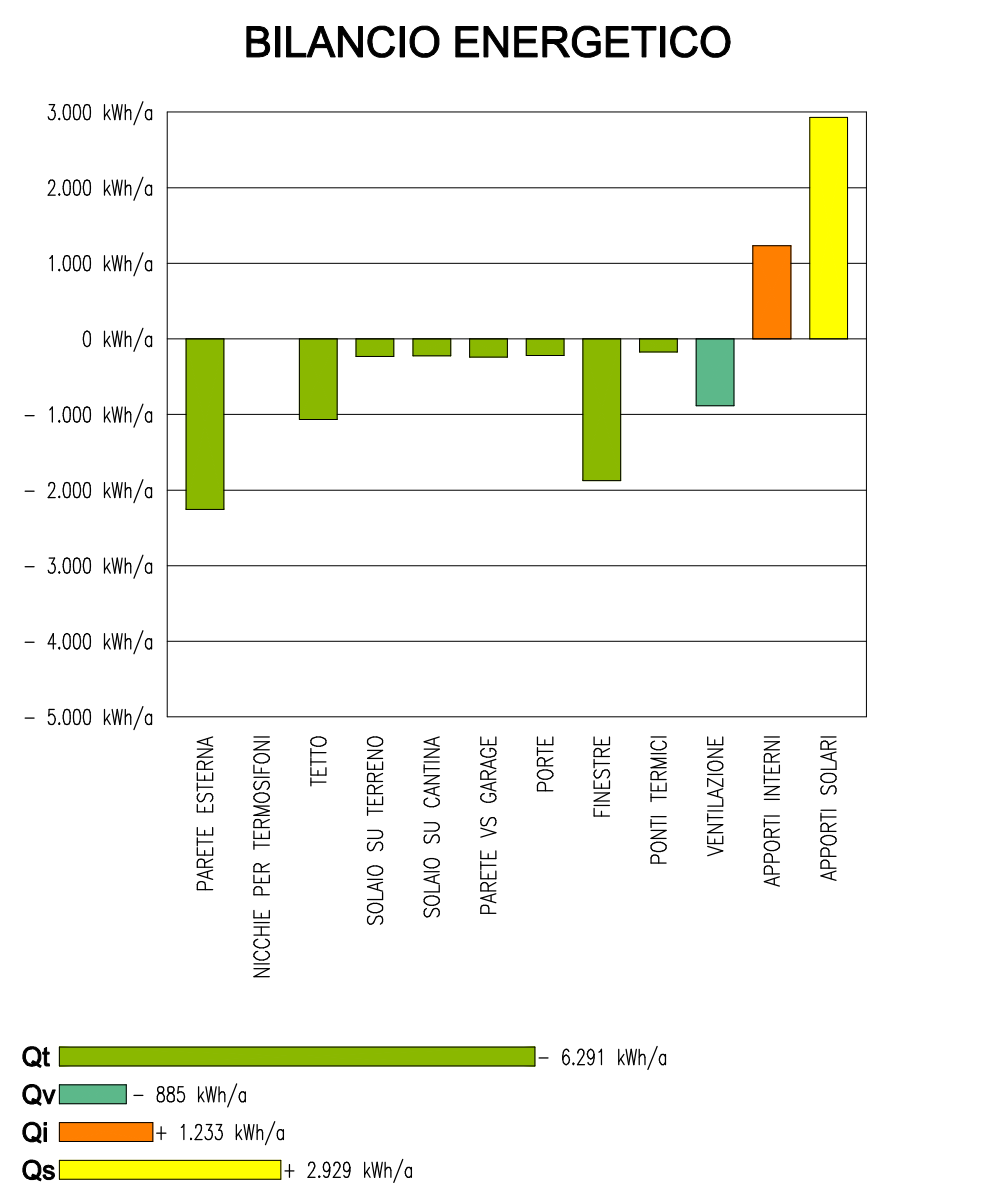
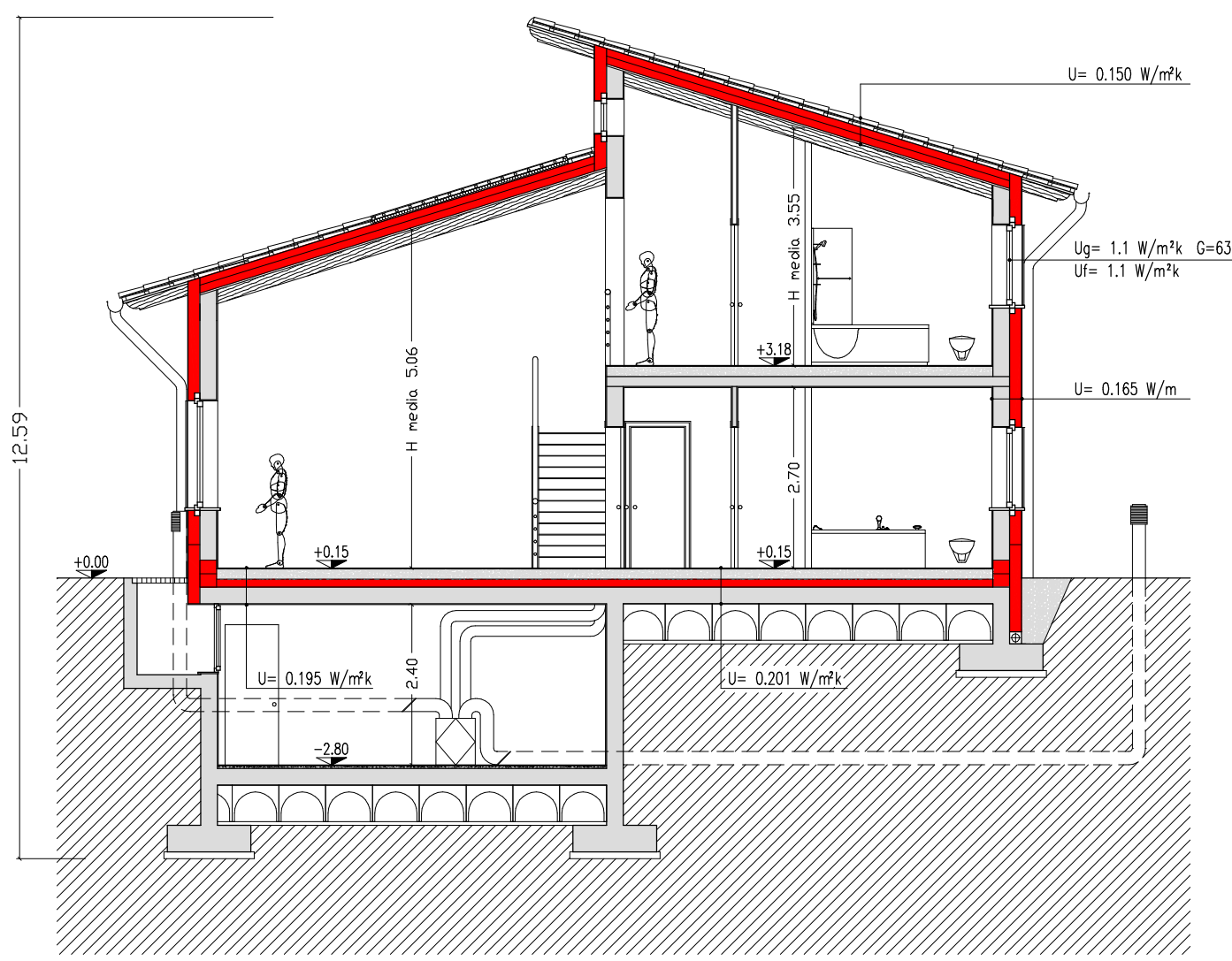
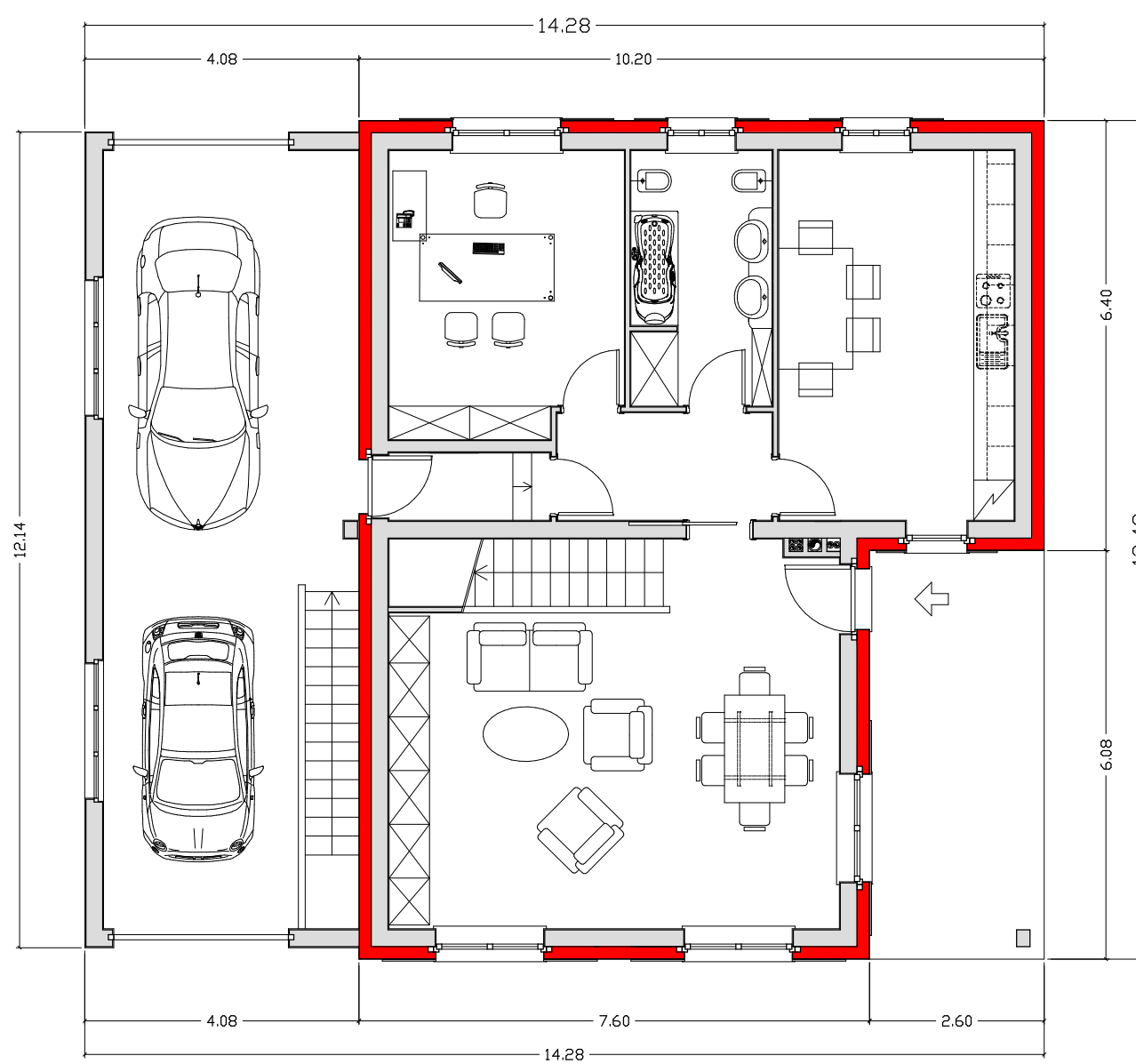
VILLA 1 - DLgs 192/05 e 311/06



VILLA 2 - CasaClima B



VILLA 3 - CasaClima A  
 UTILIZZATO PER MINERGIE (VILLA 5)



VILLA 4 - PASSIVHAUS

