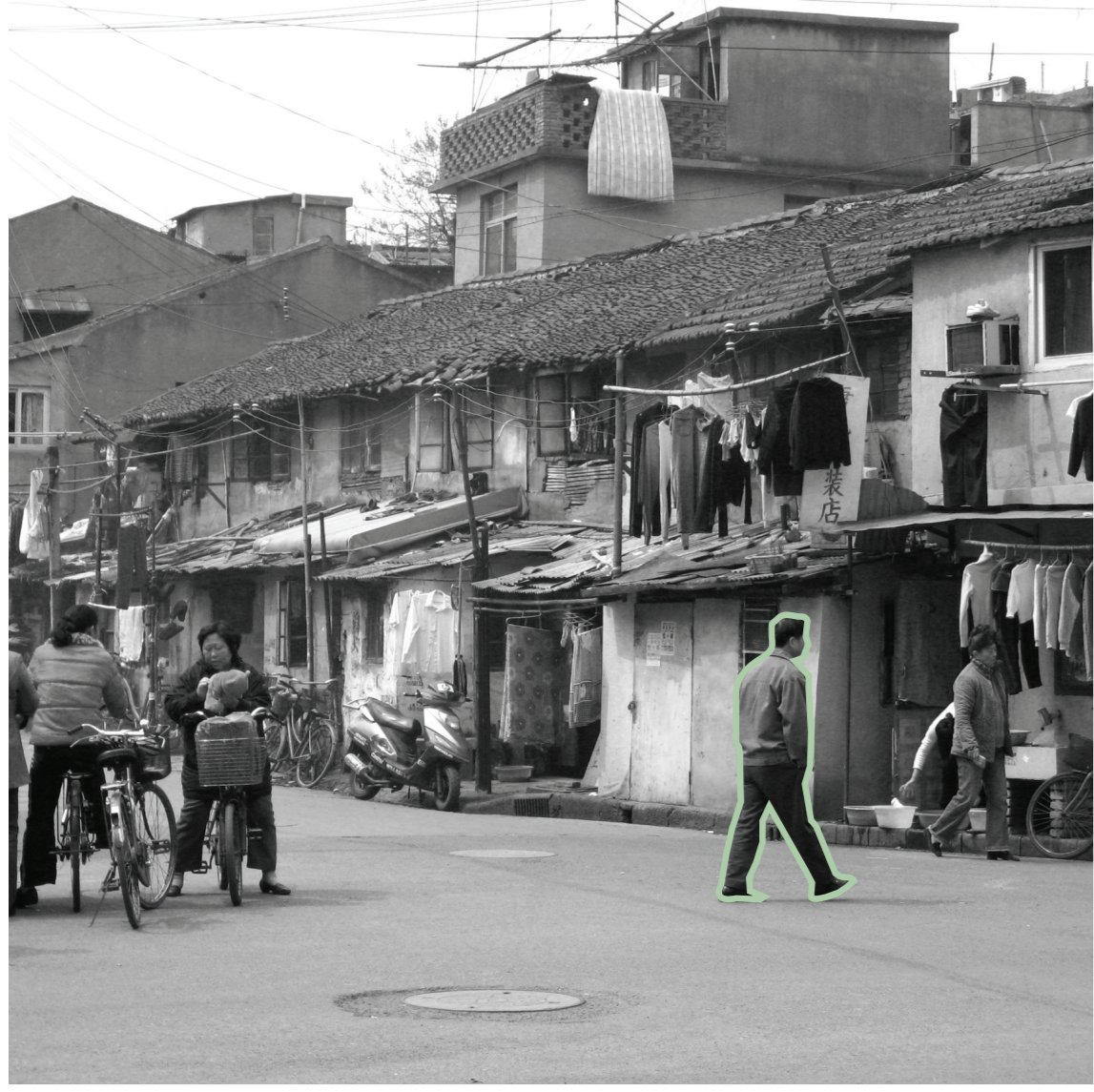
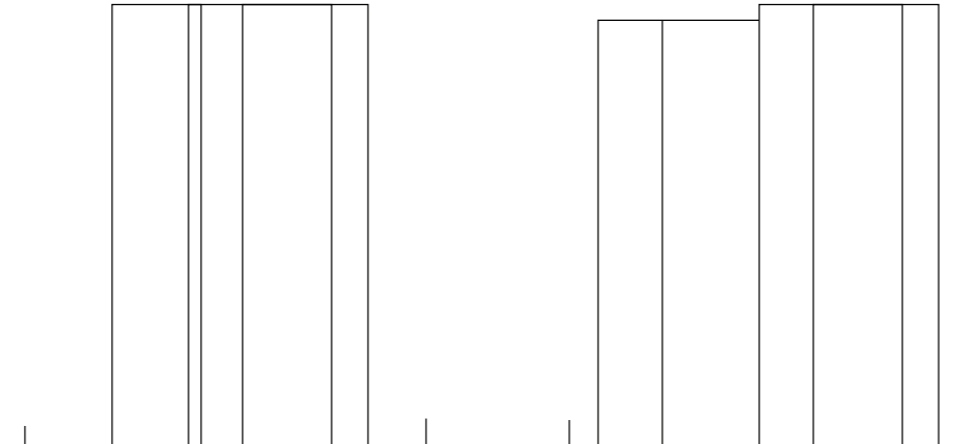


Hongkou district, Shanghai.
 FAR area di studio: 2.1
 FAR aree limitrofe: 3.1



Insedimento esistente:

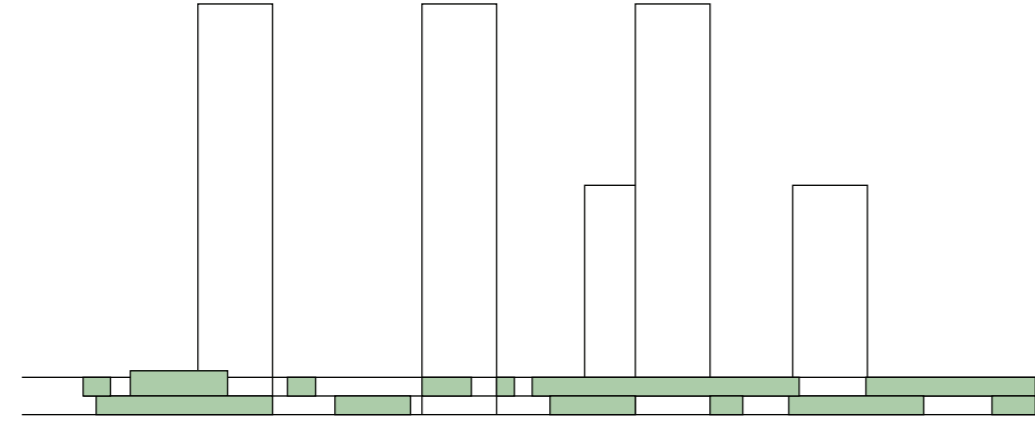
- + vita comunitaria e identità
- + cortina edilizia a scala umana
- + mix residenziale e commerciale
- + permeabilità
- sovraffollamento
- abusivismo
- carenza di servizi.
- scarse condizioni igieniche



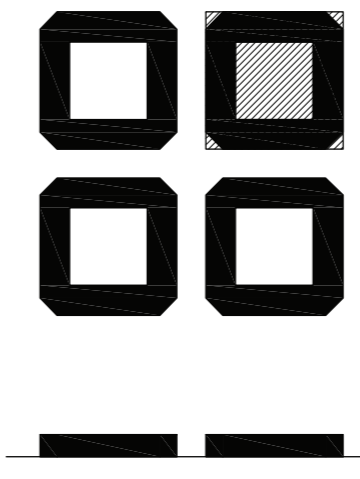
Insedimento di nuova costruzione:

- + maggiori mq/persona
- + alte condizioni igienico abitative
- Dimensione estrema
- Comunità chiusa

- Sviluppo orizzontale e verticale
- Edifici a piastra + edifici a torre
- Mix funzionale
- Mix tipologico
- Vita comunitaria
- Identità
- Sdoppiamento del suolo urbano
- FAR = 3

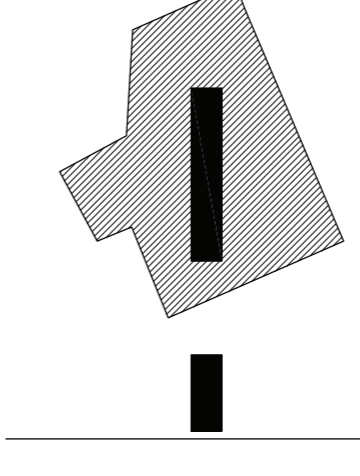


PLAN CERDÀ
 sup. lotto: = 12000 mq
 sup. costruita = 7500 x 5 = 37500 mq
 F.A.R. = 3.1



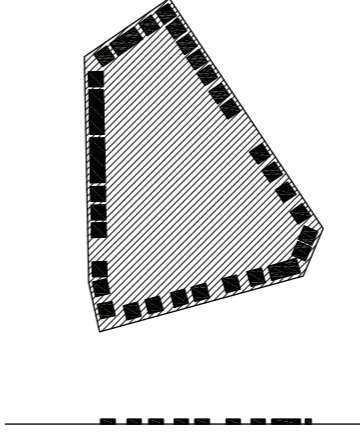
PLAN CERDÀ - Barcellona

UNITÉ d'HABITATION
 sup. lotto: = 33500 mq
 sup. costruita = 3500 x
 F.A.R. =



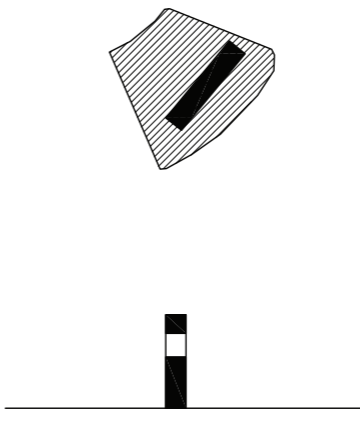
UNITÉ D'HABITATION - Marsiglia

GARDEN CITY
 sup. lotto: = 31000 mq
 sup. costruita = 5100 mq
 F.A.R. = 0.16



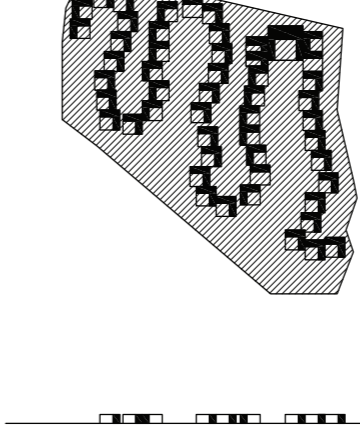
GARDEN CITY - Letchworth

EL MIRADOR
 sup. lotto: = 8800 mq
 sup. costruita = 19600 mq
 F.A.R. = 2.2



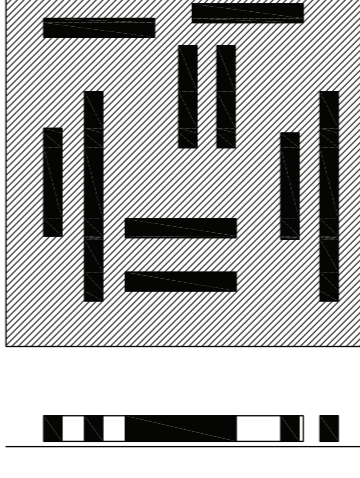
EL MIRADOR - Sanchinarro

CASE a FREDENSBORG
 sup. lotto: = 42000 mq
 sup. costruita = 7800 x 2 = 15600 mq
 F.A.R. = 0.3



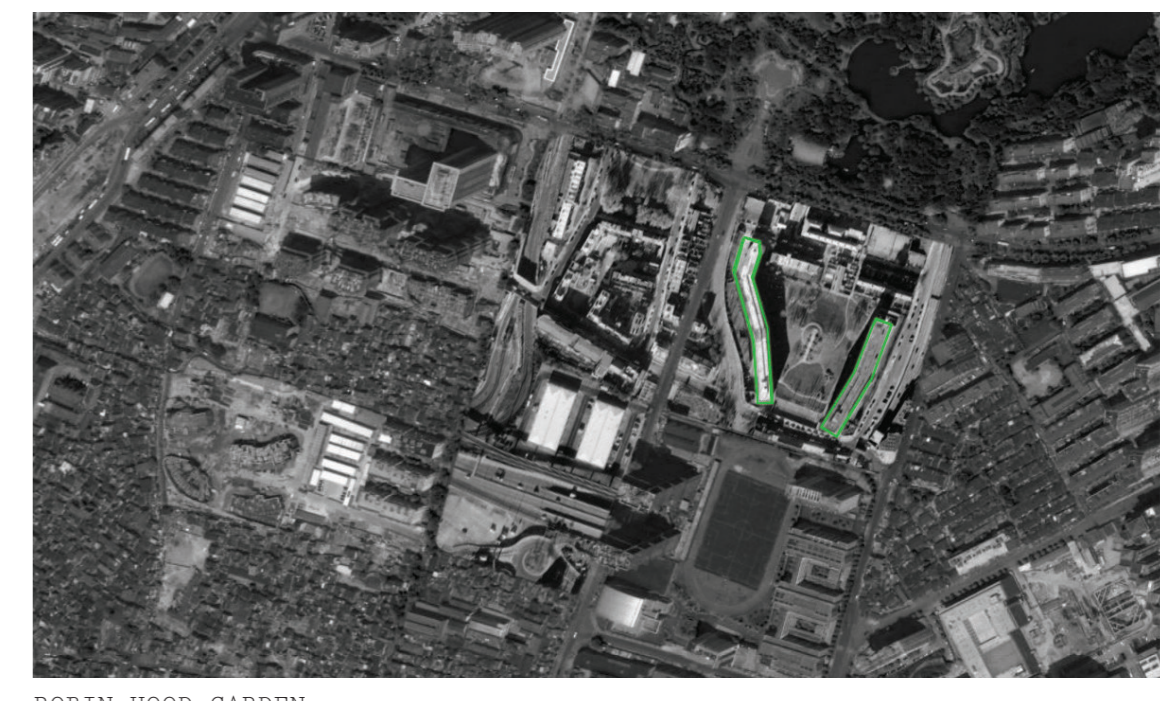
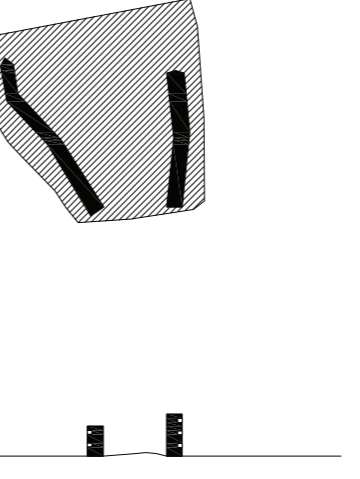
WEISSENHOLF SIEDLUNG - Stoccarda

SUPER QUADRAS
 sup. lotto: = 90000 mq
 sup. costruita = 15000 x 6 = 90000 mq
 F.A.R. = 1



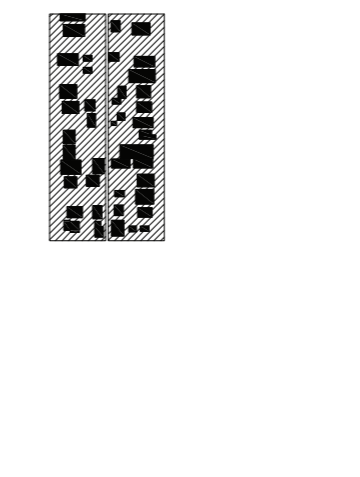
SUPER QUADRA - Brasilia

ROBIN HOOD GARDEN
 plot surface = 27000 mq
 Area = 25000 mq
 F.A.R. = 0.9



ROBIN HOOD GARDEN

SPRAWL CITY
 plot surface = 18000 mq
 Area = 4500 mq
 F.A.R. = 0.25



SPRAWL CITY - Indianapolis